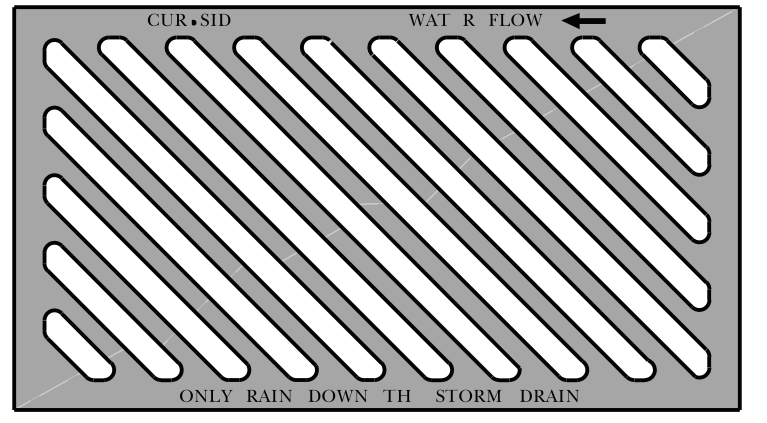
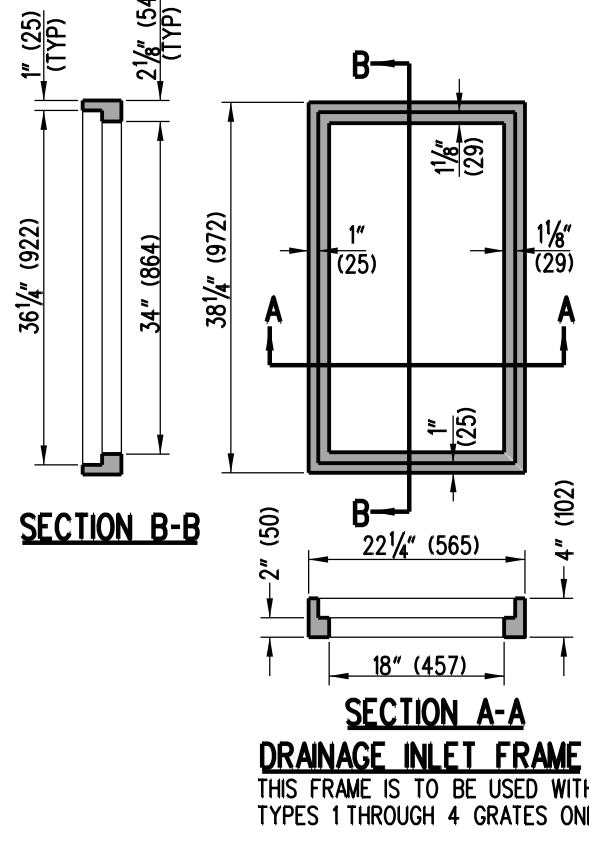
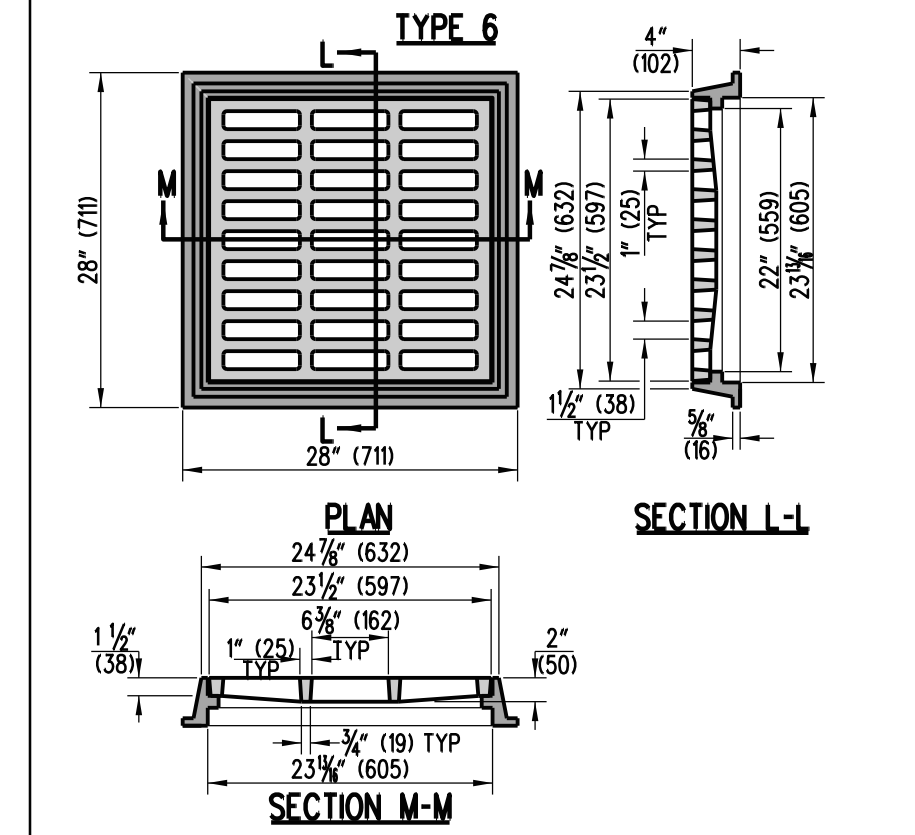
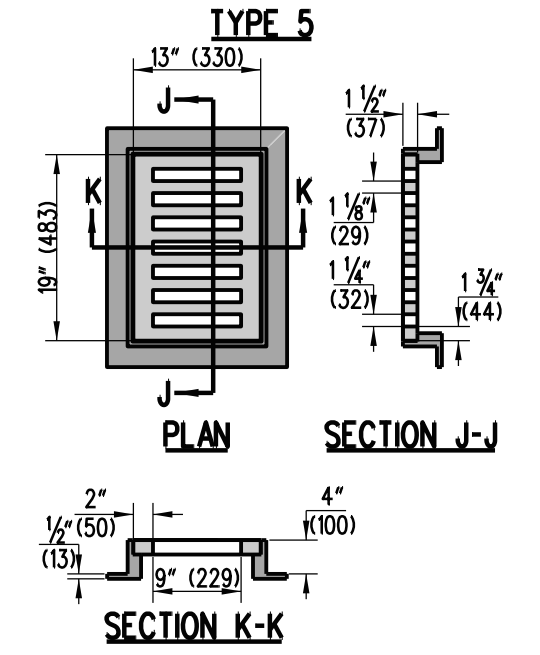
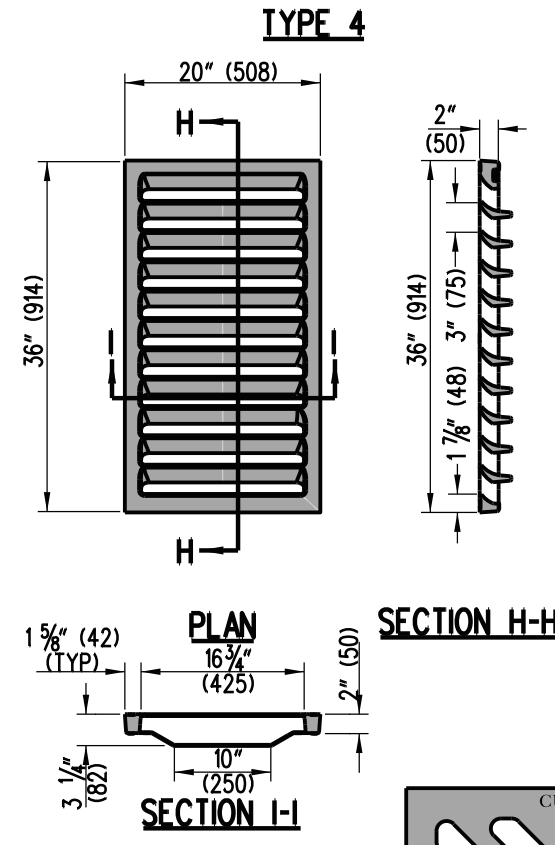
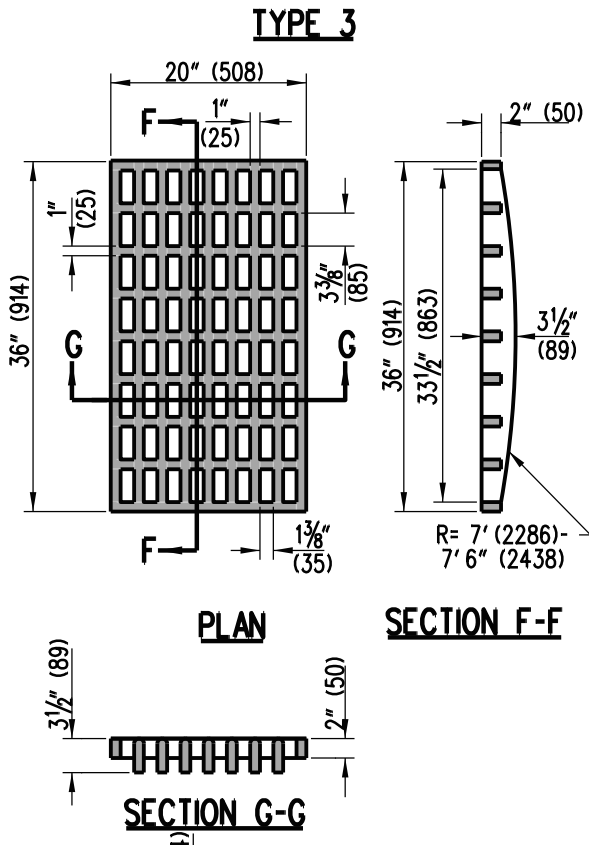
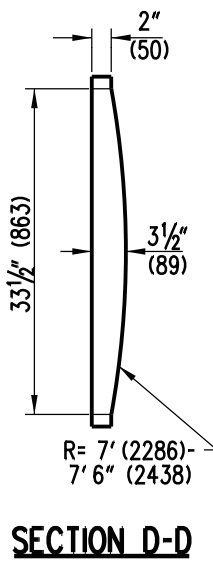
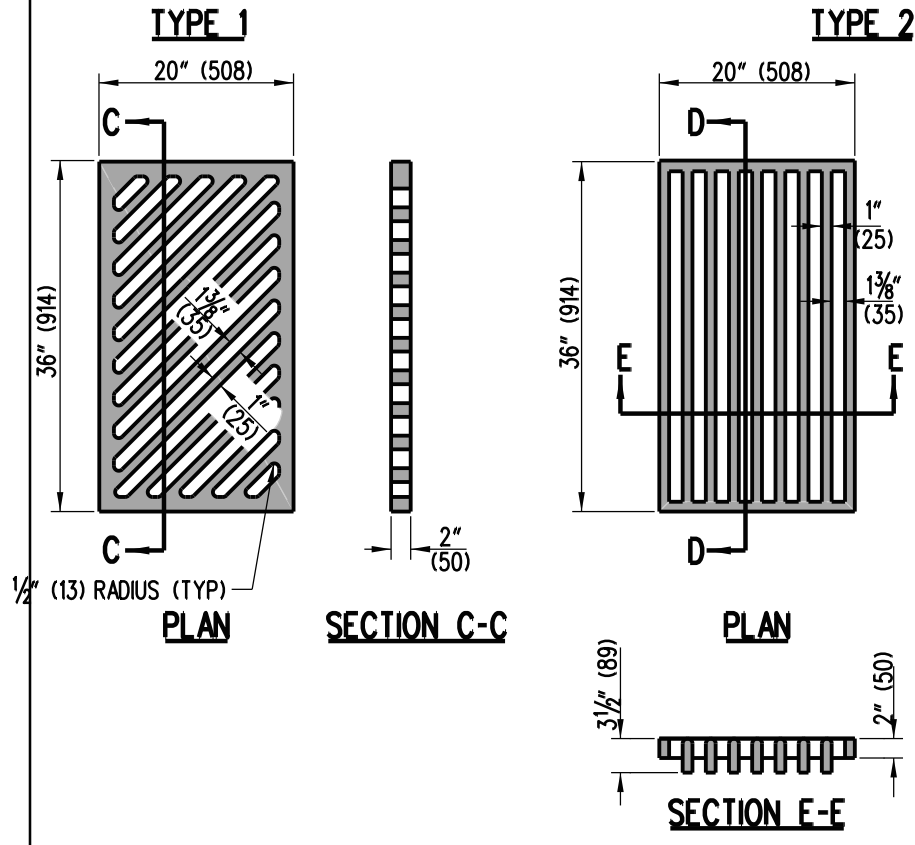


DRAINAGE INLET FRAME AND GRATES



DRAINAGE GRATE LABELING EXAMPLE DETAIL

- NOTES:**
1. THE TYPE 2 DRAINAGE INLET GRATE SHALL NOT BE INSTALLED WHERE BICYCLE TRAFFIC MAY BE PRESENT.
 2. THE TOP OF ALL DRAINAGE INLET GRATES SHALL BE LABELED "ONLY RAIN DOWN THE STORM DRAIN". ALSO, DRAINAGE INLET GRATES TYPE 1 AND TYPE 4 SHALL BE LABELED WITH "WATER FLOW" AND AN ARROW INDICATING FLOW DIRECTION AS SHOWN IN THE EXAMPLE DETAIL.
 3. THE TYPE 1 DRAINAGE INLET GRATE SHALL BE LABELED WITH "CURBSIDE" AS SHOWN ON THE EXAMPLE DETAIL. ALL LABELING ON THE TYPE 1 SHALL BE ON BOTH TOP AND BOTTOM SIDES DUE TO THE TYPE 1 BEING REVERSIBLE.
 4. THE TYPE 5 & 6 FRAME AND GRATE COMBINATIONS ARE TO BE USED IN CONJUNCTION WITH LAWN INLET BOXES ONLY. SEE SCHEDULE ON DETAIL D-4, SHEET 1 OF 1, FOR WHICH BOX SIZES ARE CONSIDERED LAWN INLET BOXES.
 5. THE TYPE 6 FRAME AND GRATE COMBINATION SHOWN IS THE NEENAH FOUNDRY FRAME AND GRATE COMBINATION MODEL NF-1878-A5G, AN ACCEPTABLE ALTERNATIVE IS THE EAST JORDAN IRON WORKS FRAME AND GRATE COMBINATION MODEL V-5622.