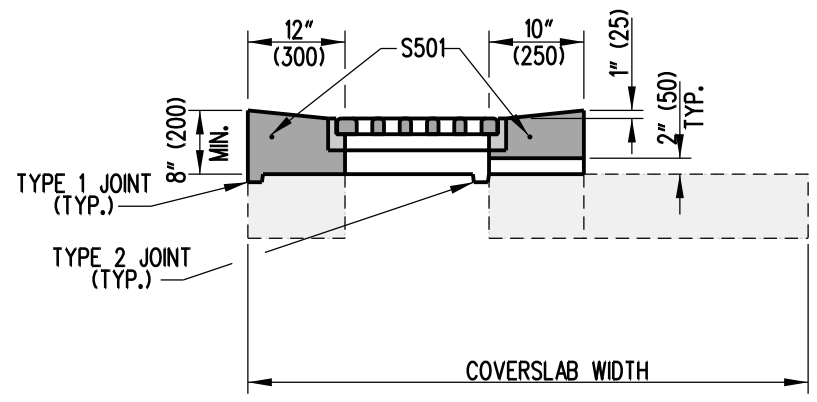
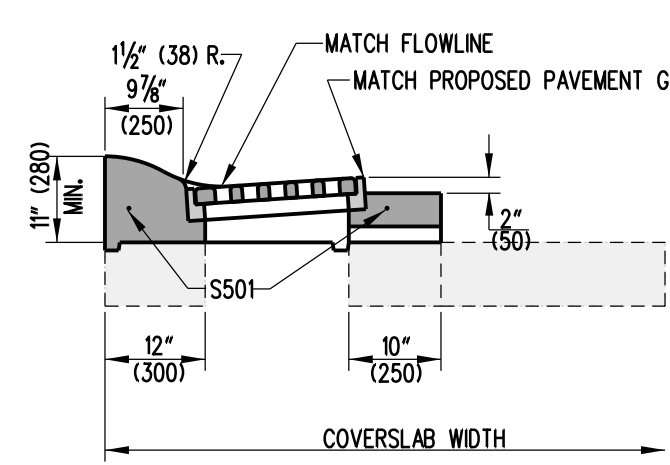


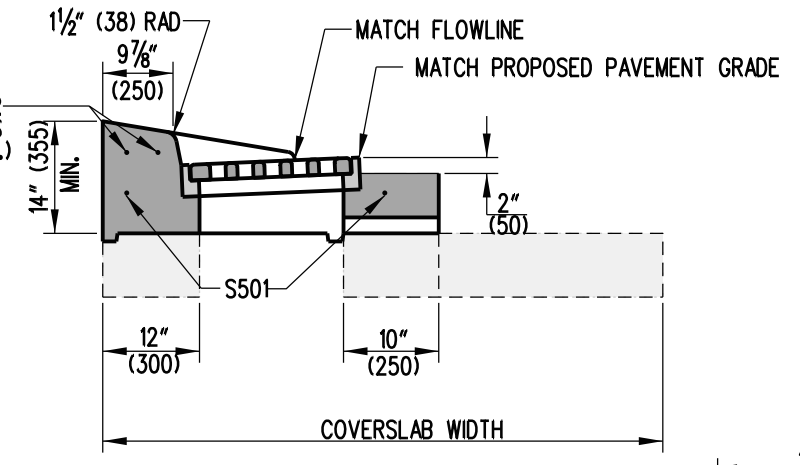
SCALE : N.T.S.



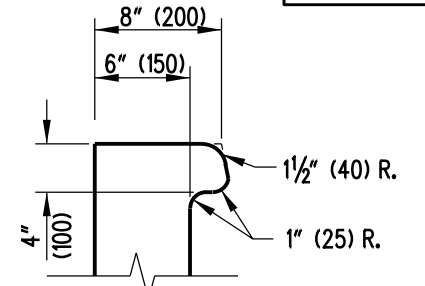
TYPE A



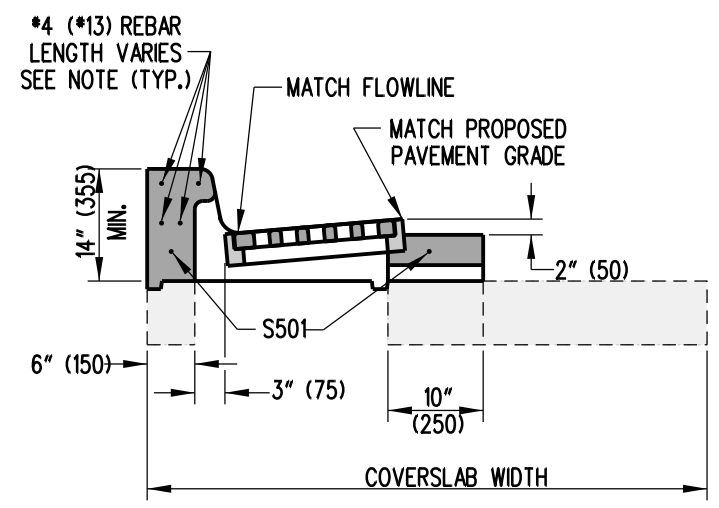
TYPE D



TYPE E

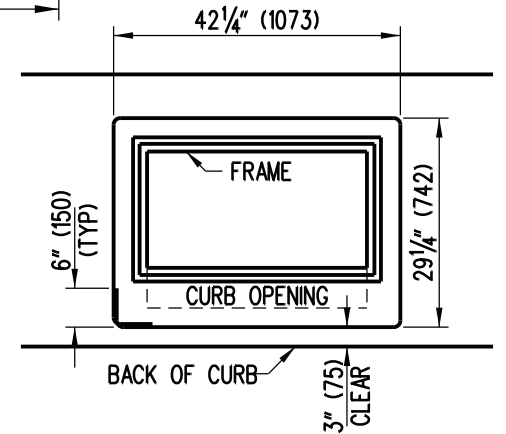


CURB OPENING DETAIL



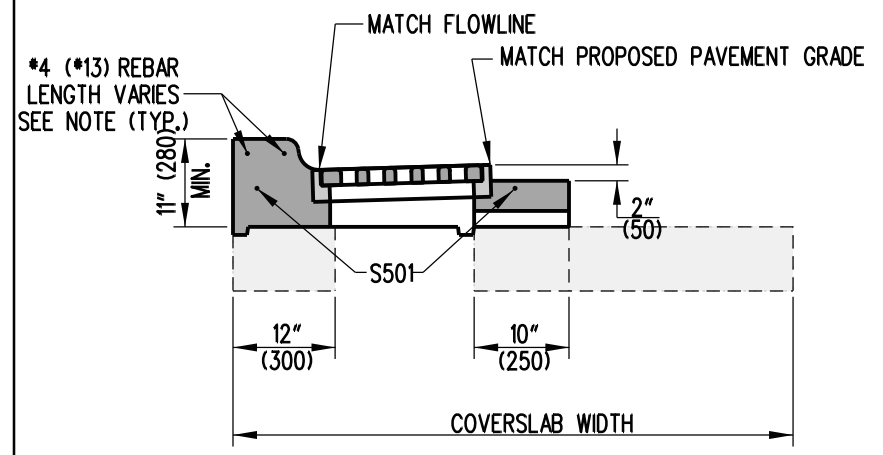
TYPE B

INLET TOP UNIT APPLICATIONS	
TOP UNIT	CURB
TYPE A	USE IN DRAINAGE SWALE
TYPE B	INTEGRAL PCC CURB & GUTTER, TYPE 1 & 3, PCC CURB TYPE 1
TYPE C	INTEGRAL PCC CURB & GUTTER, TYPE 4, PCC CURB TYPE 3
TYPE D	INTEGRAL PCC CURB & GUTTER, TYPE 2
TYPE E	PCC CURB TYPE 2

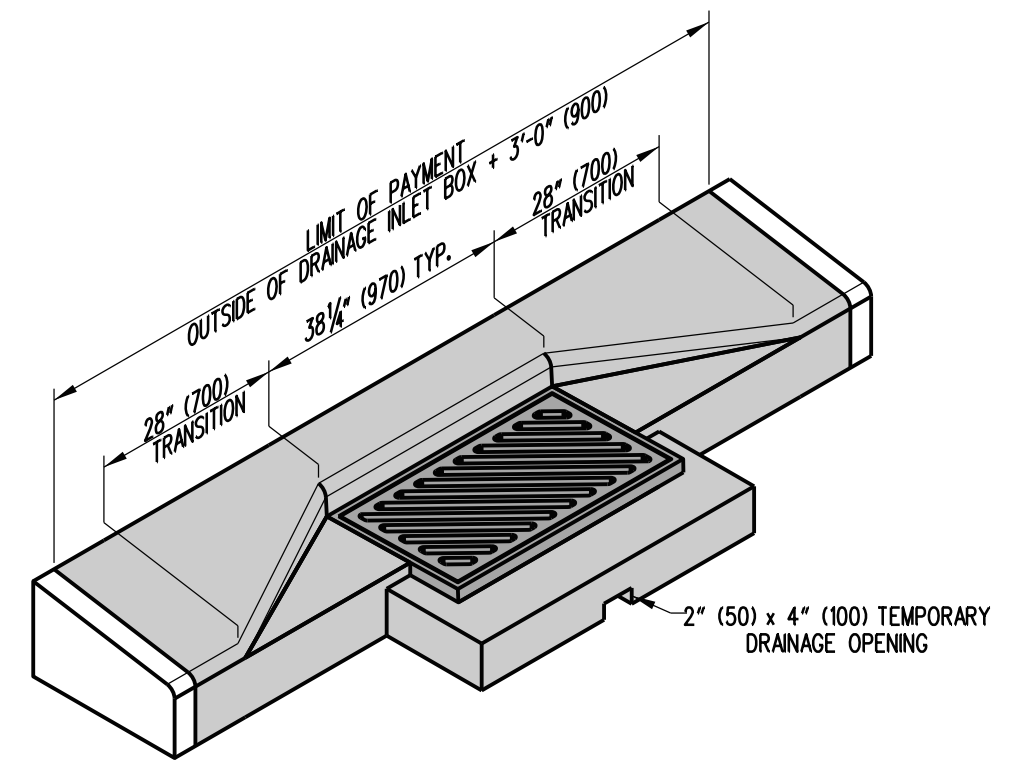


S501 BENDING DIAGRAM

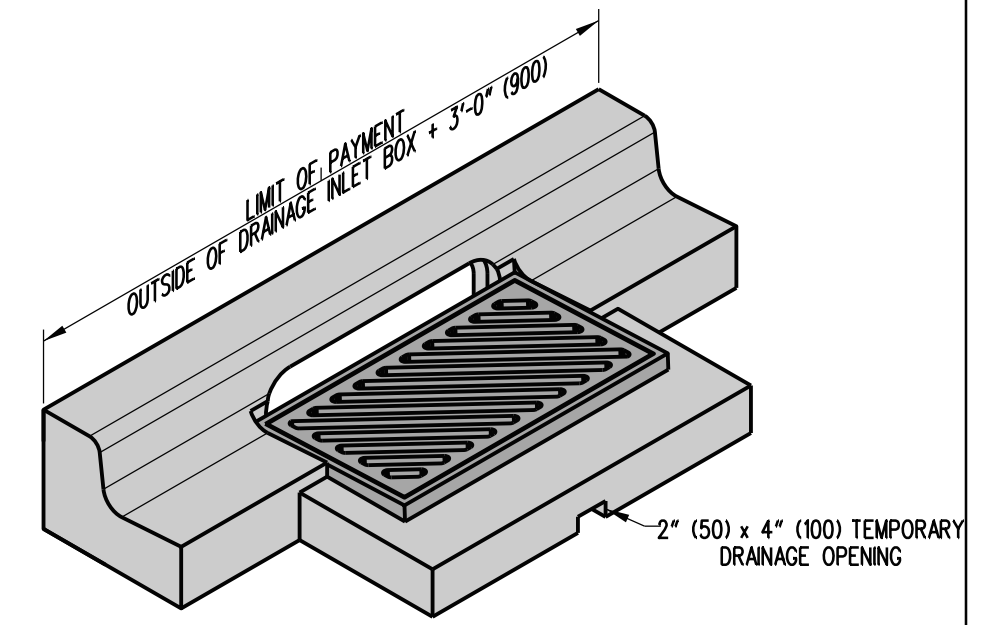
S501 IS NOT REQUIRED TO BE ONE CONTINUOUS BAR. IF MORE THAN ONE BAR IS USED, THERE MUST BE A 12" (300) OVERLAP BETWEEN BARS.



TYPE C



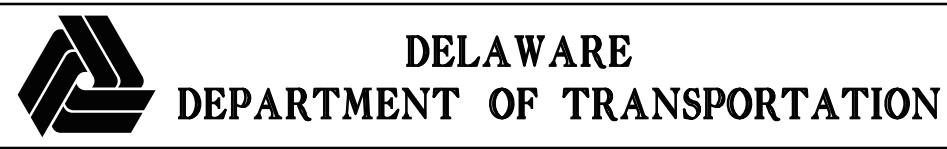
ISOMETRIC VIEW
TYPE E UNIT SHOWN



ISOMETRIC VIEW

TYPE B TOP UNIT SHOWN WITH INTEGRAL CURB & GUTTER TYPE 3

NOTE: LENGTH OF #4 (#13) REBAR SHALL BE THE OUTSIDE OF THE DRAINAGE INLET BOX PLUS 2'-9" (830).



DELAWARE
DEPARTMENT OF TRANSPORTATION

DRAINAGE INLET TOP UNITS			
STANDARD NO.	D-5 (2010)	SHT.	3 OF 9

APPROVED	SIGNATURE ON FILE	12/28/2010
	CHIEF ENGINEER	DATE
RECOMMENDED	SIGNATURE ON FILE	12/27/2010
	DESIGN ENGINEER	DATE