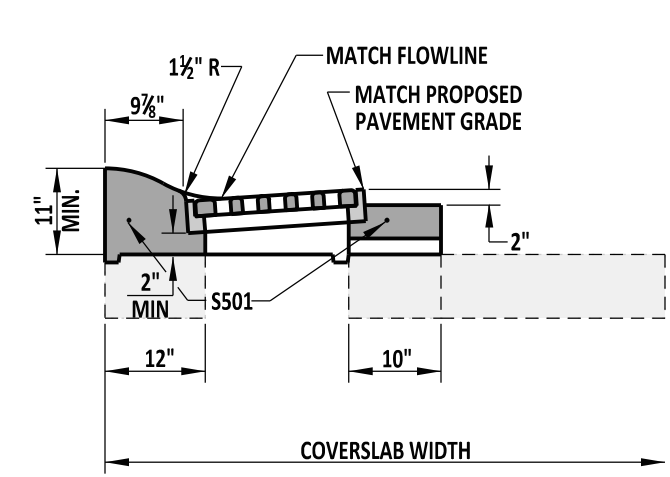
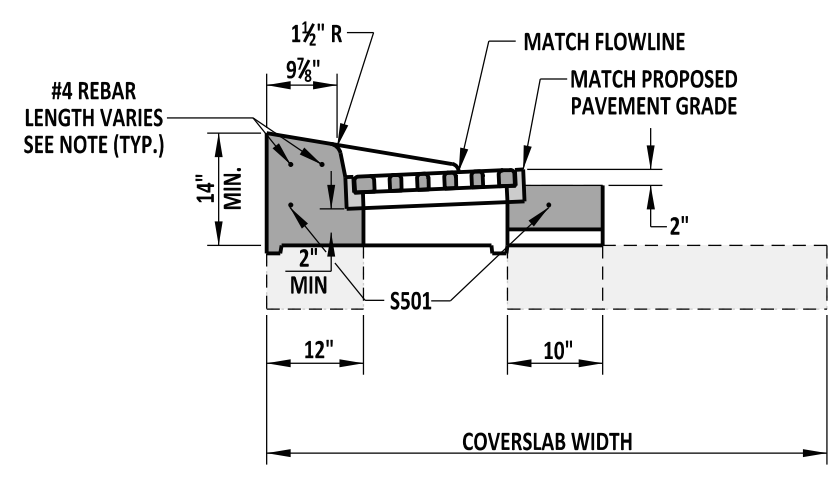


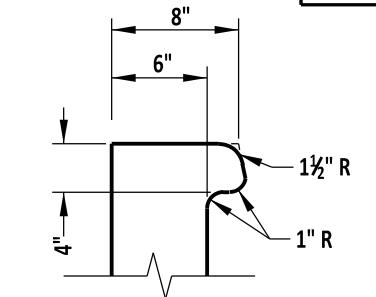
TYPE A



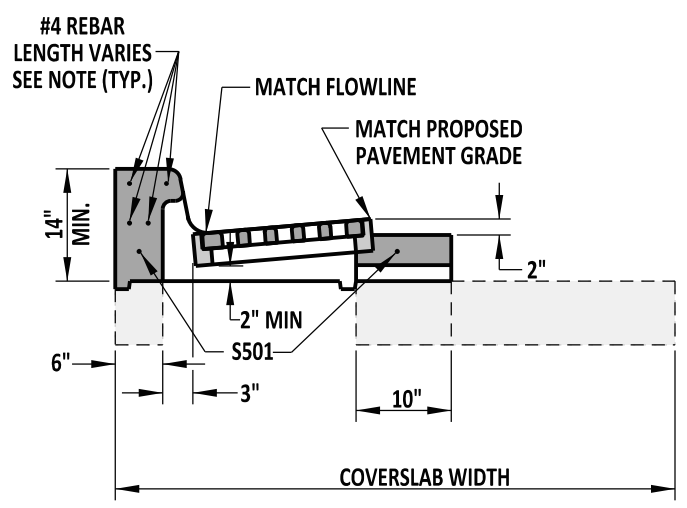
TYPE D



TYPE E

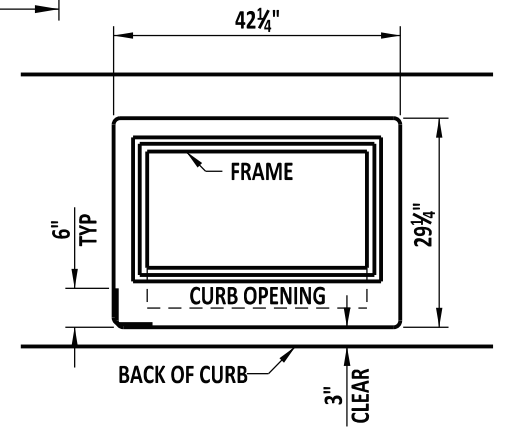


CURB OPENING DETAIL



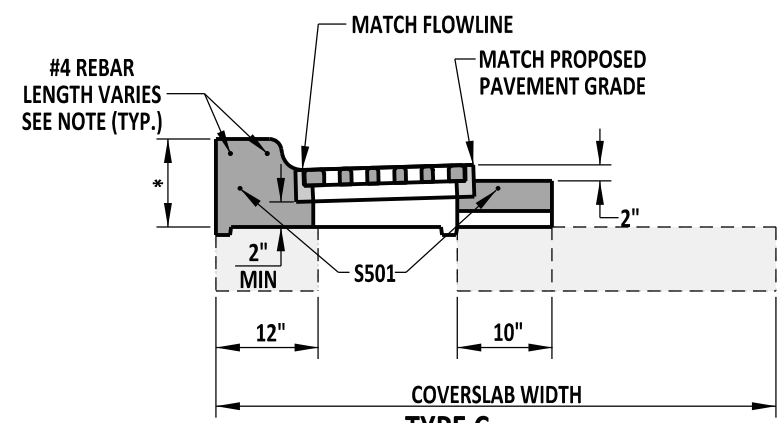
TYPE B

INLET TOP UNIT APPLICATIONS	
TOP UNIT	CURB
TYPE A	USE IN DRAINAGE SWALE
TYPE B	INTEGRAL P.C.C. CURB & GUTTER, TYPE 1-8 & 3-8, PCC CURB TYPE 1-8
TYPE C	INTEGRAL P.C.C. CURB & GUTTER, TYPES 1-6, 3-6, 1-4, 3-4, 1-2 AND 3-2 AND PCC CURB TYPE 1-6, 1-4, AND 1-2.
TYPE D	INTEGRAL PCC CURB & GUTTER, TYPE 2
TYPE E	PCC CURB TYPE 2

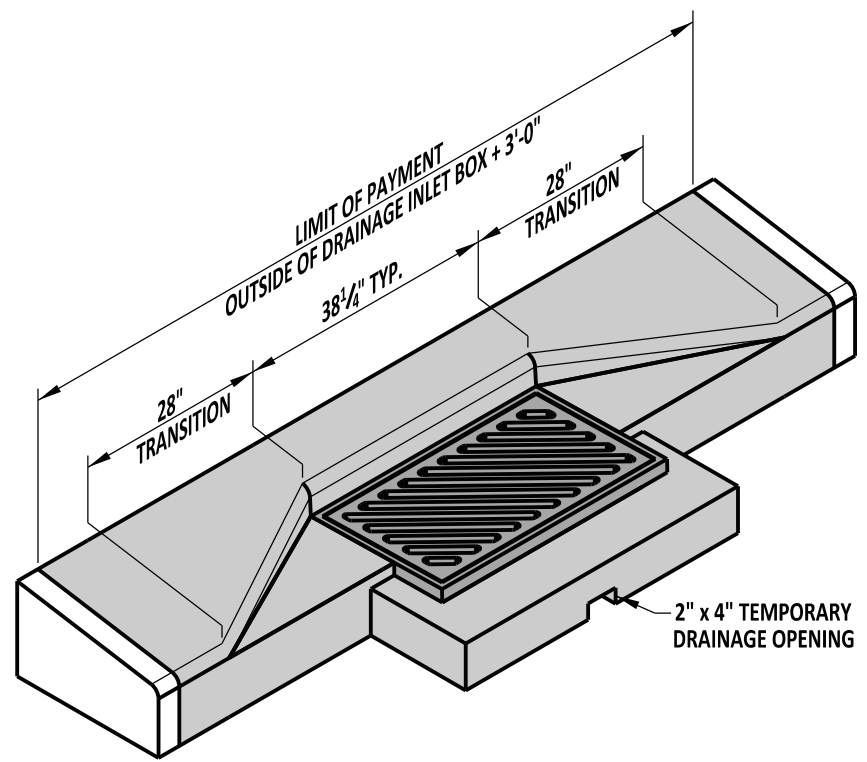


S501 BENDING DIAGRAM

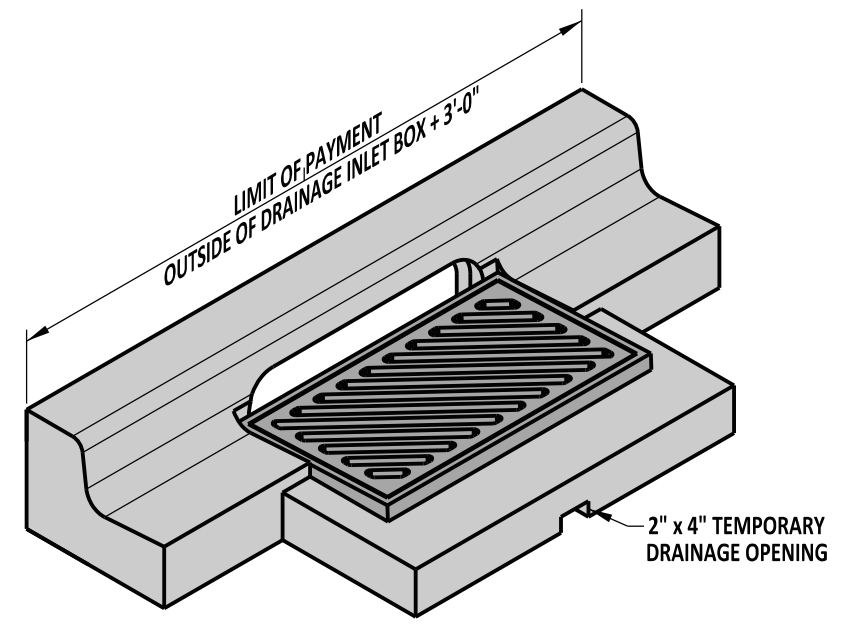
S501 IS NOT REQUIRED TO BE ONE CONTINUOUS BAR. IF MORE THAN ONE BAR IS USED, THERE MUST BE A 12" OVERLAP BETWEEN BARS.



TYPE C



ISOMETRIC VIEW
TYPE E UNIT SHOWN



ISOMETRIC VIEW
TYPE B TOP UNIT SHOWN WITH INTEGRAL CURB & GUTTER TYPE 3

* - THIS DIMENSION VARIES BASED ON THE HEIGHT OF THE CURB AND GUTTER OR CURB USED:
 - INTEGRAL P.C.C. CURB AND GUTTER, TYPES 1-6 AND 3-6 & CURB, TYPE 1-6 - 12" MIN.
 - INTEGRAL P.C.C. CURB AND GUTTER, TYPES 1-4 AND 3-4 & CURB, TYPE 1-4 - 10" MIN.
 - INTEGRAL P.C.C. CURB AND GUTTER, TYPES 1-2 AND 3-2 & CURB, TYPE 1-2 - 8" MIN.

NOTE: LENGTH OF #4 REBAR SHALL BE THE OUTSIDE OF THE DRAINAGE INLET BOX PLUS 2'-9".

<p>DELAWARE DEPARTMENT OF TRANSPORTATION</p>	DRAINAGE INLET TOP UNITS				APPROVED	SIGNATURE ON FILE <small>CHIEF ENGINEER</small>	02/27/2012 <small>DATE</small>
	STANDARD NO.	D-5 (2010)	SHT.	3 OF 9	RECOMMENDED	SIGNATURE ON FILE <small>DESIGN ENGINEER</small>	02/26/2012 <small>DATE</small>