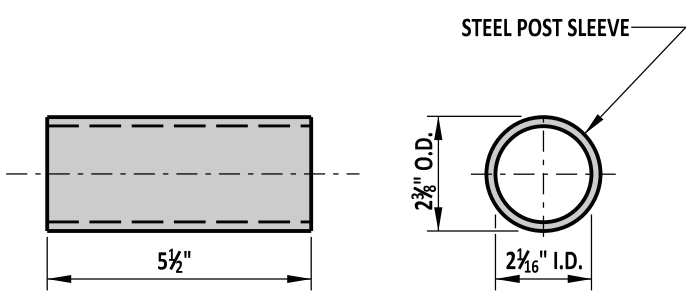
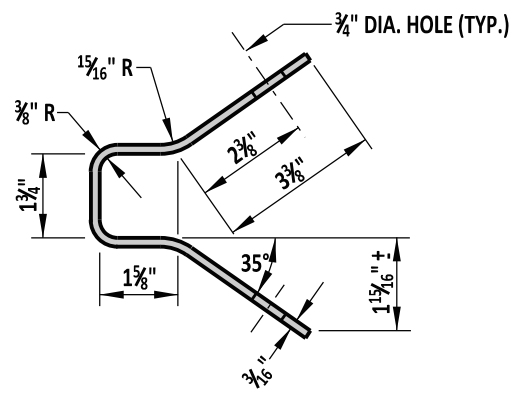


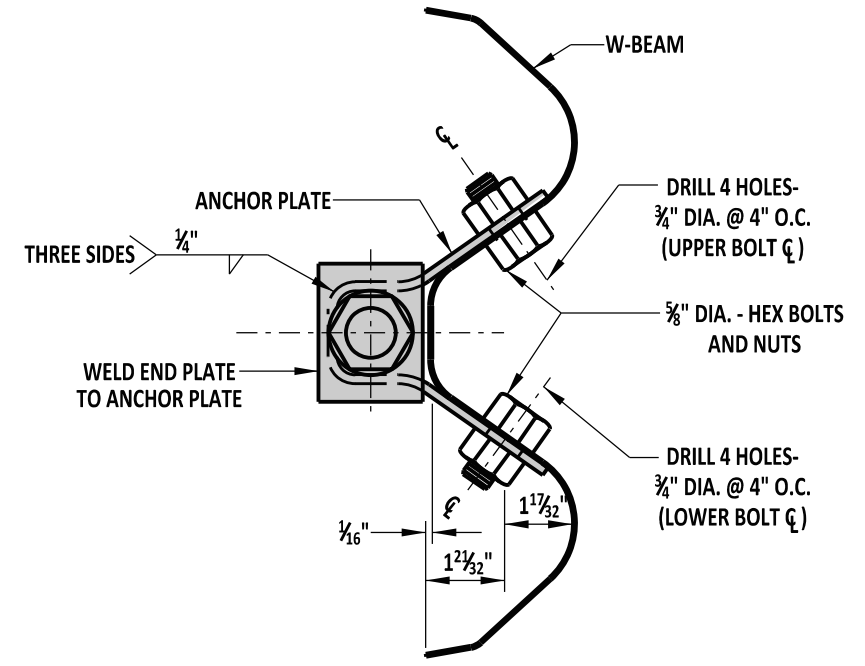
**SWAGED CABLE ASSEMBLY AND RELATED HARDWARE ASSEMBLY**



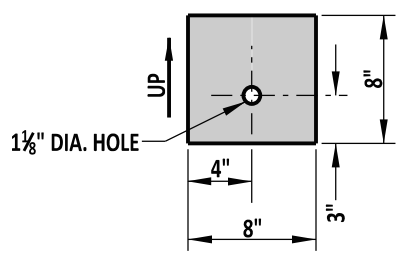
**POST SLEEVE**



**SECTION A-A**

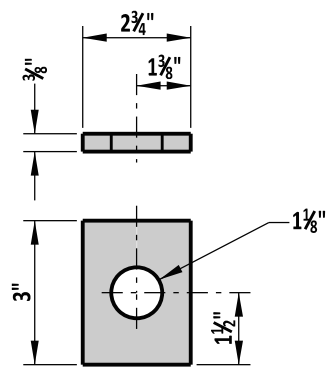


**ANCHOR PLATE TO W-BEAM CONNECTION DETAIL**



**TIMBER BEARING PLATE**

5/8" THICKNESS



**END PLATE**

**NOTES:**

- 1). PLACE A 1/2" WIDE GALVANIZED RETAINING TIE STRAP AROUND THE SHORT TIMBER BREAKAWAY POST AND TIMBER BEARING PLATE TO ENSURE PROPER ORIENTATION OF THE TIMBER BEARING PLATE.
- 2). TIGHTEN ASSEMBLY UNTIL CABLE IS TAUGHT.
- 3). ALL HOLES SHALL BE DRILLED PRIOR TO GALVANIZING.