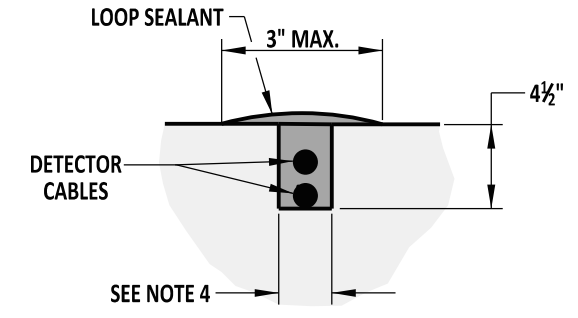


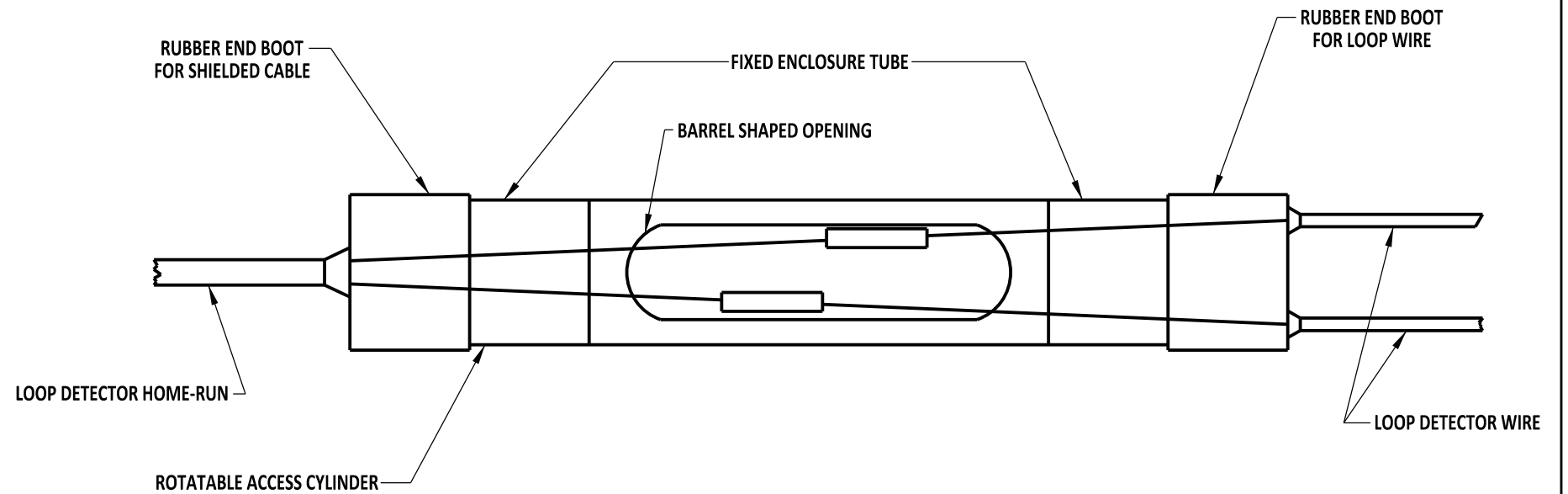
**SECTION A-A
CONCRETE SURFACE**



**SECTION A-A
HOT-MIX SURFACE**

LOOP DETECTOR SAWCUT TYPICAL

REFER TO DETAIL T-8, SHEET 1 OF 1 FOR LOOP DETECTOR LEAD-IN INSTALLATION DETAILS.



SPLICE KIT DETAIL
SEE NOTE 6

NOTES:

- 1). WHEN A PROPOSED LOOP DETECTOR SAWCUT CROSSSES A LATERAL ROADWAY JOINT OR VALVE COVER (FOR EXAMPLE, MANHOLE, JUNCTION WELL, ETC.), LOOP DETECTOR INSTALLATION SHALL BE MODIFIED INTO TWO SEPARATE LOOP DETECTORS WHICH SHALL NOT TRAVERSE JOINTS OR VALVE COVERS.
- 2). THE LOOPS SHALL BE PLACED IN THE CENTER OF THE LANE UNLESS OTHERWISE NOTED ON PLANS.
- 3). PRESENCE LOOP DETECTORS ARE TO BE PLACED 12" BEHIND THE EXISTING OR PROPOSED STOP LINE.
- 4). LOOP DETECTOR AND LEAD-IN SAWCUTS SHALL BE 5/8".
- 5). 1 1/2" DRILL HOLES SHALL BE USED AT ALL CHANGES IN SAWCUT DIRECTIONS.
- 6). BARREL SIZE SHALL BE 1" TO 1 1/2" DIAMETER AND 4" TO 6" LONG. ALL SPLICE KIT CONNECTIONS SHALL BE DONE IN JUNCTION WELLS ONLY.



DELAWARE
DEPARTMENT OF TRANSPORTATION

LOOP DETECTOR INSTALLATION & SPLICE KIT

STANDARD NO. T-9 (2012) SHT. 1 OF 1

APPROVED

SIGNATURE ON FILE
CHIEF ENGINEER

01/07/2013
DATE

RECOMMENDED

SIGNATURE ON FILE
DESIGN ENGINEER

12/20/2012
DATE