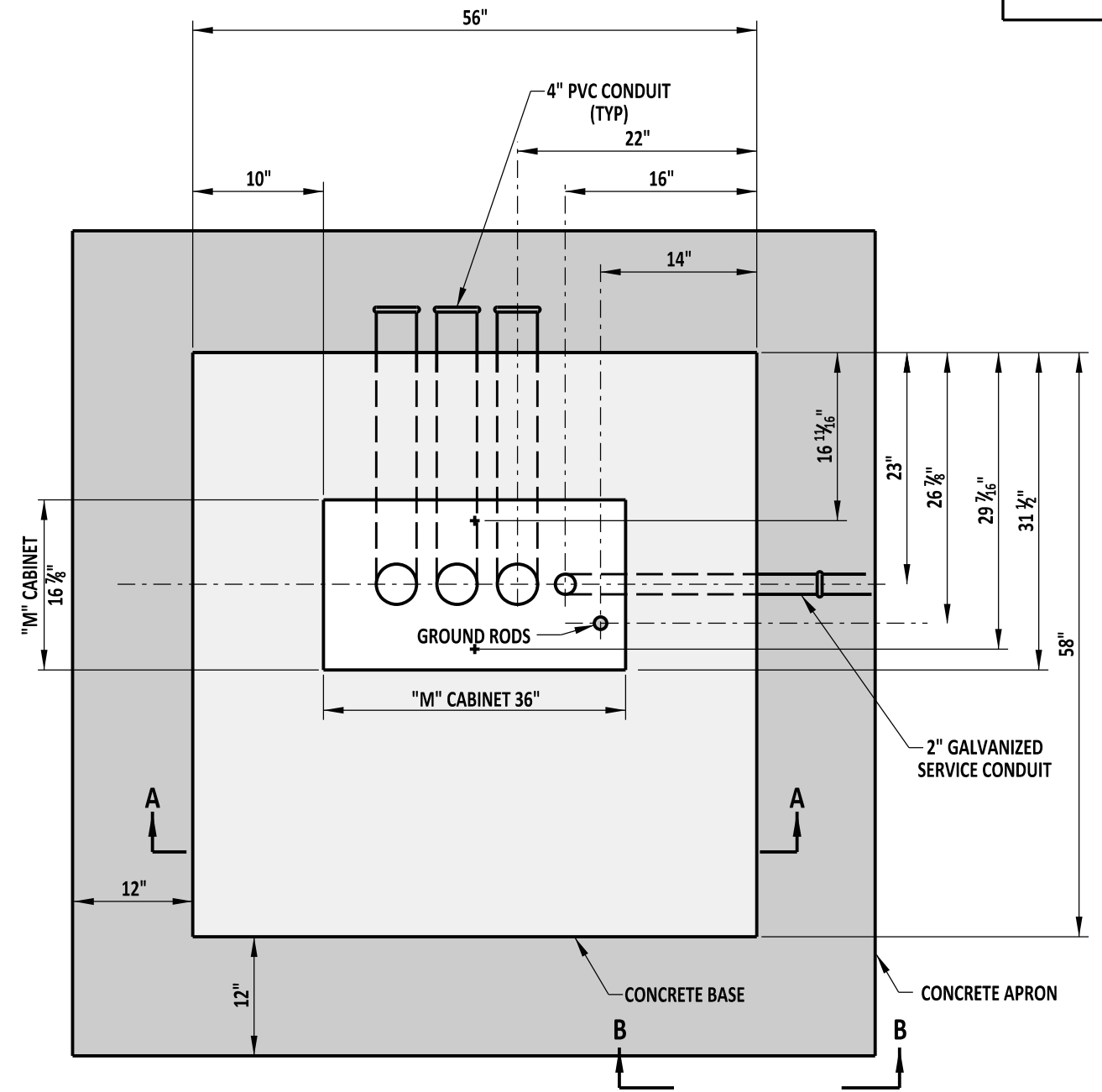


**"F" CABINET
PLAN VIEW**



**"M" CABINET
PLAN VIEW**

NOTE:

- 1). CONCRETE APRON IS REQUIRED ONLY WHEN CABINET BASE IS INSTALLED IN UNPAVED AREAS OR AS DIRECTED ON PLAN.
- 2). CONDUITS SHALL BE EVENLY SPACED, WITH MINIMUM 2" WIDTH SPACING ESTABLISHED BETWEEN ALL CONDUITS.
- 3). FOR VIEW OF SECTION A-A AND SECTION B-B, SEE DETAIL T-4, SHEET 2 OF 2.



**DELAWARE
DEPARTMENT OF TRANSPORTATION**

CABINET BASES, TYPES M & F

STANDARD NO. T-4 (2013)

SHT. 1 OF 2

APPROVED

SIGNATURE ON FILE
CHIEF ENGINEER

02/14/2014
DATE

RECOMMENDED

SIGNATURE ON FILE
DESIGN ENGINEER

01/14/2014
DATE