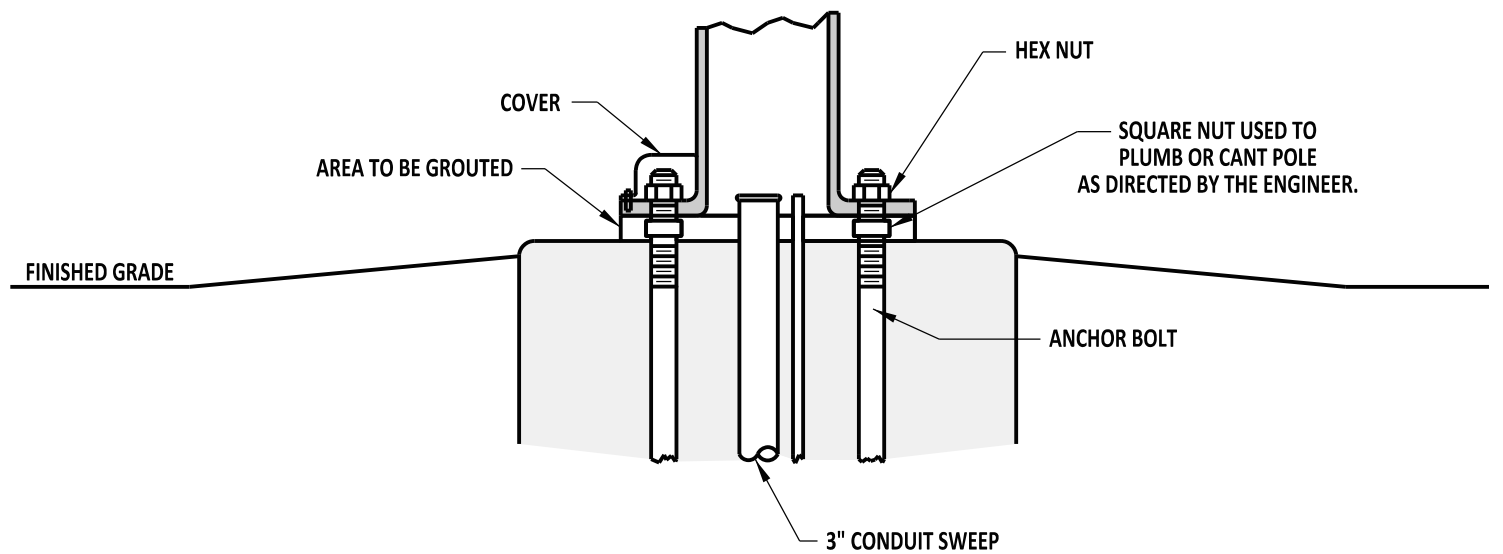


**TYPICAL SECTION (BASES 1,2,2A,2B,3,3A, AND 3B)**



**TYPICAL INSTALLATION (BASES 1,2,2A,2B,3,3A, AND 3B)**

**NOTES:**

- 1.) PLACE 2 EACH 6" LONG x 1/2" DIA. P.V.C., SCHEDULE 40 (TYP) VENTS IN THE GROUT AS DIRECTED IN THE FIELD BY ENGINEER.
- 2.) SEE POLE BASE DATA CHART ON DETAIL T-5, SHEET 3 OF 4, FOR POLE BASE DIMENSIONS.
- 3.) ANCHOR BOLTS AND BOLT PATTERN TO BE PROVIDED BY DELDOT'S SIGNAL CONSTRUCTION INSPECTOR UNLESS NOTED OTHERWISE.



**DELAWARE**  
**DEPARTMENT OF TRANSPORTATION**

<b>POLE BASES</b>				<b>APPROVED</b>	SIGNATURE ON FILE <small>CHIEF ENGINEER</small>	02/14/2014 <small>DATE</small>
STANDARD NO.	T-5 (2013)	SHT.	2 OF 4	<b>RECOMMENDED</b>	SIGNATURE ON FILE <small>DESIGN ENGINEER</small>	01/14/2014 <small>DATE</small>