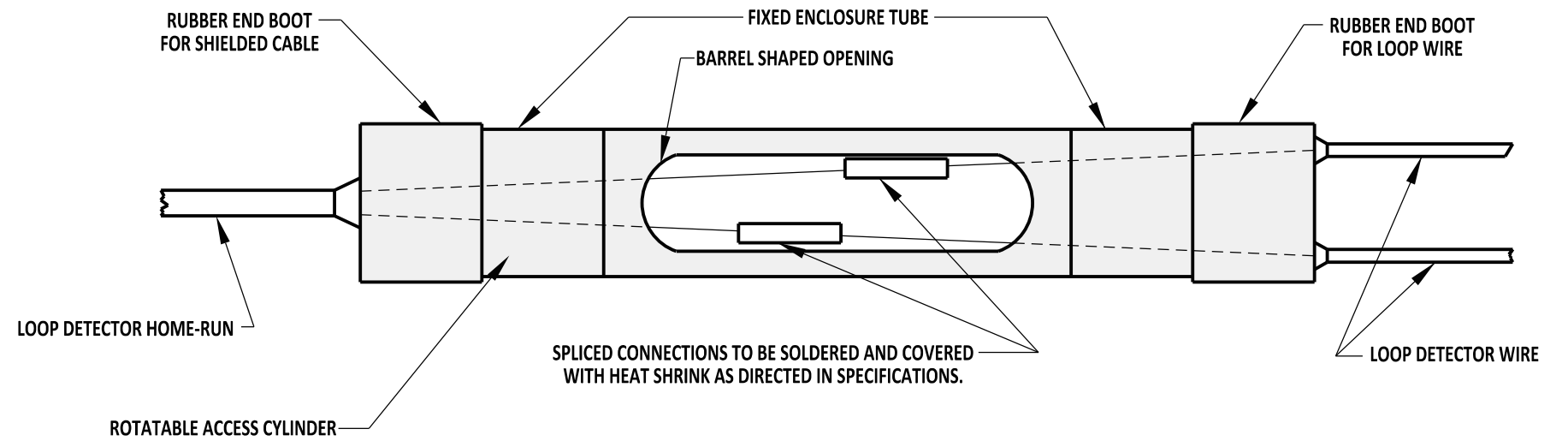


LOOP DETECTOR SAWCUT TYPICAL
REFER TO DETAIL T-8, SHEETS 1 THROUGH 4 FOR LOOP DETECTOR LEAD-IN INSTALLATION REQUIREMENTS.

**SECTION A-A
HOT-MIX SURFACE**



NOTES:

- 1). WHEN A PROPOSED LOOP DETECTOR SAWCUT CROSSSES A LATERAL ROADWAY JOINT OR OTHER OBSTRUCTION (VALVE COVER, MANHOLE, JUNCTION WELL, ETC.), LOOP DETECTOR INSTALLATION SHALL BE MODIFIED INTO TWO SEPARATE LOOP DETECTORS WHICH SHALL NOT TRAVERSE JOINTS OR OBSTRUCTION.
- 2). THE LOOPS SHALL BE PLACED IN THE CENTER OF THE LANE UNLESS NOTED OTHERWISE ON PLANS.
- 3). PRESENCE LOOP DETECTORS ARE TO BE PLACED 12" BEHIND THE EXISTING OR PROPOSED STOP LINE.
- 4). LOOP DETECTOR AND LEAD-IN SAWCUTS SHALL BE 5/8" WIDE.



**DELAWARE
DEPARTMENT OF TRANSPORTATION**

LOOP DETECTOR INSTALLATION & SPLICE KIT

STANDARD NO. T-9 (2013) SHT. 1 OF 3

APPROVED

SIGNATURE ON FILE
CHIEF ENGINEER

02/14/2014
DATE

RECOMMENDED

SIGNATURE ON FILE
DESIGN ENGINEER

01/14/2014
DATE