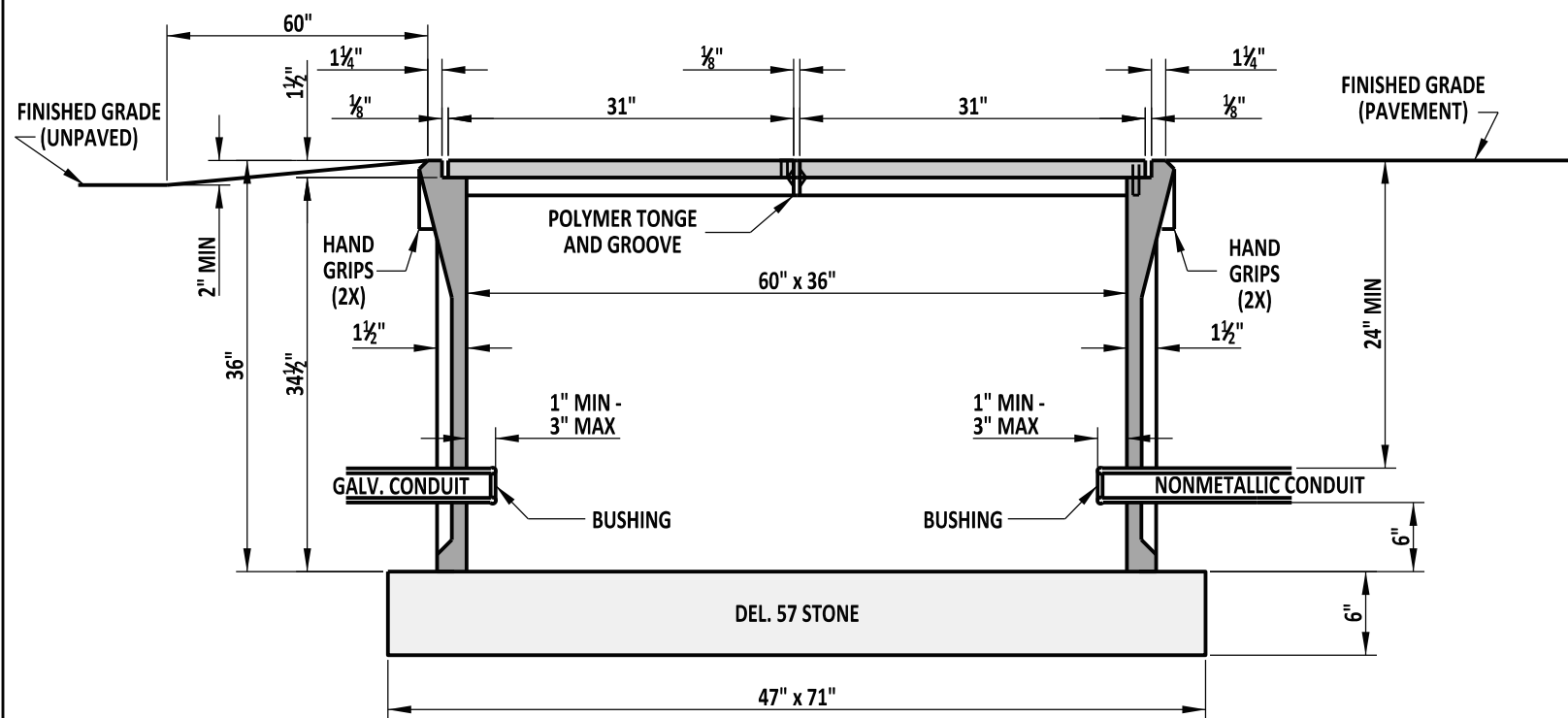


PLAN VIEW

- NOTES:**
- 1). TYPE 7 CONDUIT JUNCTION WELL SHALL BE PRECAST POLYMER CONCRETE.
 - 2). ALL CONDUIT JUNCTION WELLS CONSTRUCTED WITHIN PAVEMENT, SIDEWALKS, ETC. WILL BE CONSTRUCTED FLUSH WITH THE SURFACE OF THE SAME. INSTALLATION IN UNPAVED AREAS WILL BE CONSTRUCTED ABOVE GRADE AND GRADED TO DRAIN AWAY FROM THE CONDUIT JUNCTION WELL.
 - 3). POLYMER CONCRETE COVERS SHALL BE THE HEAVY DUTY TYPE WITH A DESIGN LOAD OF 15,000 LBS OVER A 10" SQUARE.



SECTION A-A



DELAWARE
DEPARTMENT OF TRANSPORTATION

CONDUIT JUNCTION WELL, TYPE 7

STANDARD NO. T-13 (2013) SHT. 1 OF 1

APPROVED

SIGNATURE ON FILE
CHIEF ENGINEER

02/14/2014
DATE

RECOMMENDED

SIGNATURE ON FILE
DESIGN ENGINEER

01/14/2014
DATE