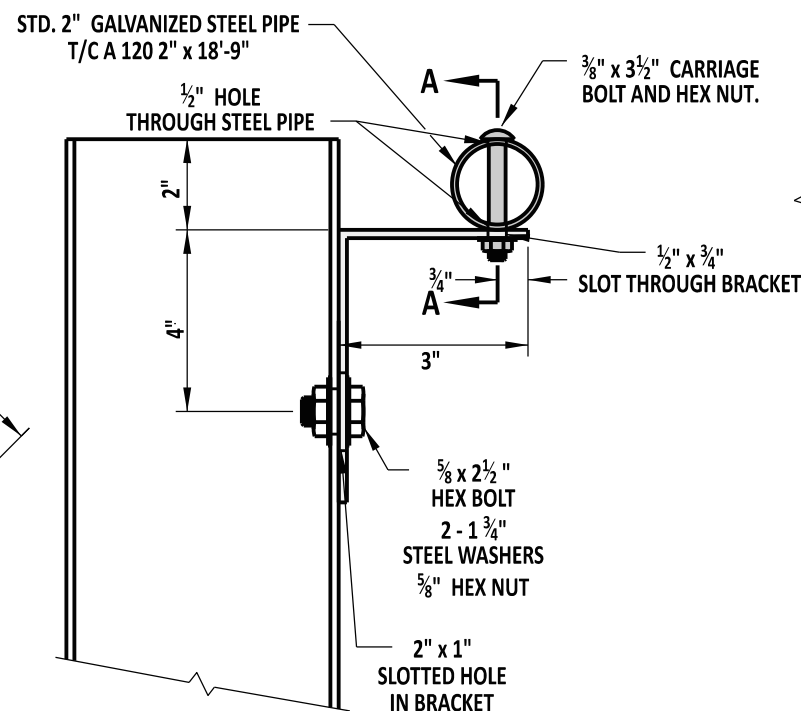
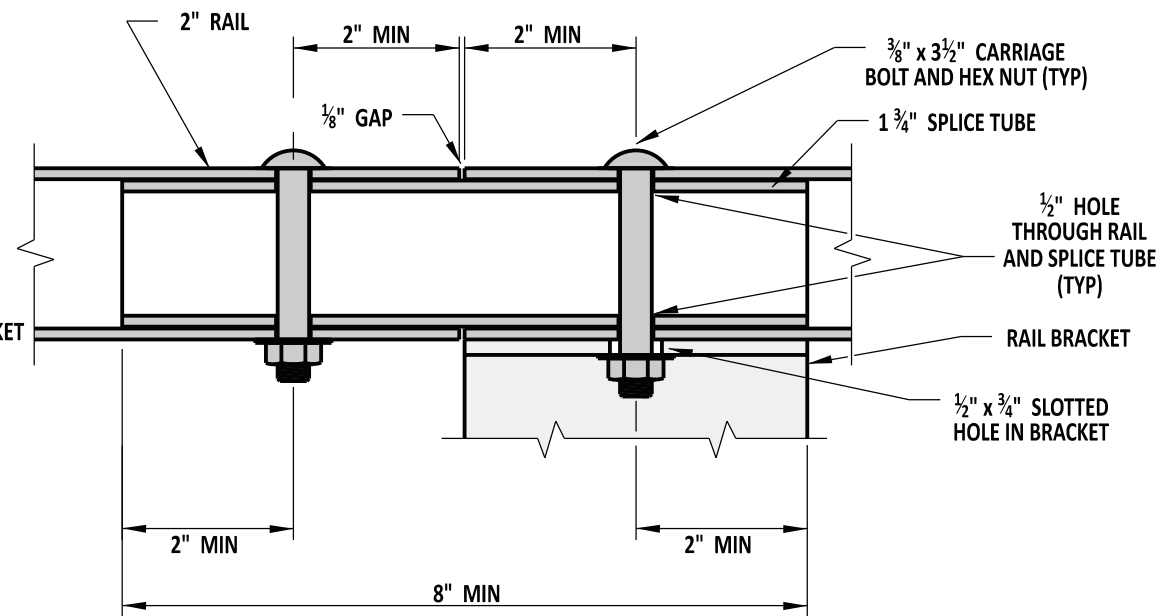


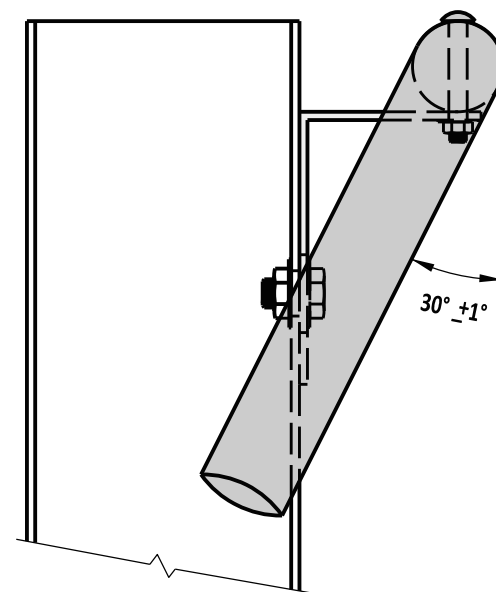
**REAR VIEW WITH START & END SECTION**



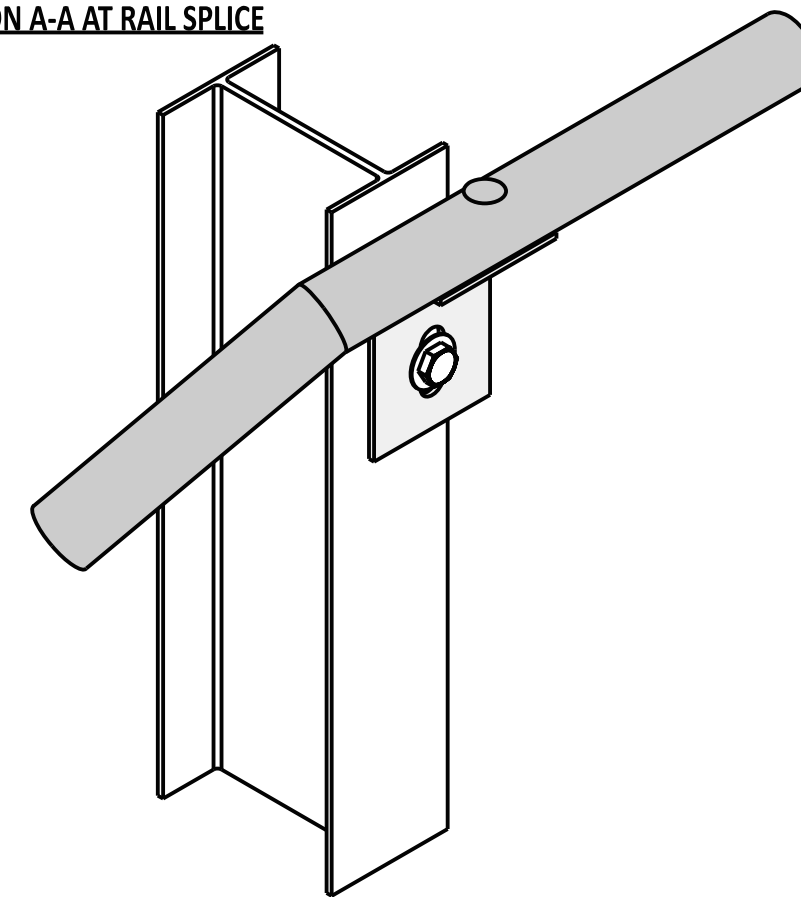
**SIDE VIEW**



**SECTION A-A AT RAIL SPLICE**



**SIDE VIEW WITH START & END SECTION**



**ISOMETRIC VIEW WITH START & END SECTION**

**NOTES:**

- 1). USE THIS RAIL ADJACENT TO AN PEDESTRIAN ACCESS ROUTE.
- 2). SHOP FABRICATE ALL COMPONENTS OF THE RAIL INCLUDING CUTTING AND DRILLING.
- 3). BUR ALL EXPOSED THREADED HARDWARE TO ENSURE NUTS CAN NOT BE REMOVED.
- 4). PRIOR TO GALVANIZING, SHOP DRILL GUARDRAIL POSTS THAT RAIL BRACKETS WILL BE ATTACHED TO.
- 5). PLACE RAIL SPLICES AT RAIL SUPPORT BRACKETS, USING THE SAME BOLT TO ATTACH THE RAIL TO THE BRACKET, TO SECURE THE SPLICE TUBE.
- 6). ONLY INSTALL RAILS TO STANDARD W-BEAM SECTIONS AND AT LEAST ONE POST AWAY FROM THE PAYMENT LIMITS OF THE END TREATMENT.



**DELAWARE  
DEPARTMENT OF TRANSPORTATION**

**GUARDRAIL MOUNTED RAIL**

STANDARD NO. B-13 (2017) SHT. 10 OF 10

APPROVED

SIGNATURE ON FILE  
CHIEF ENGINEER

5/31/2017  
DATE

RECOMMENDED

SIGNATURE ON FILE  
DESIGN ENGINEER

5/18/2017  
DATE