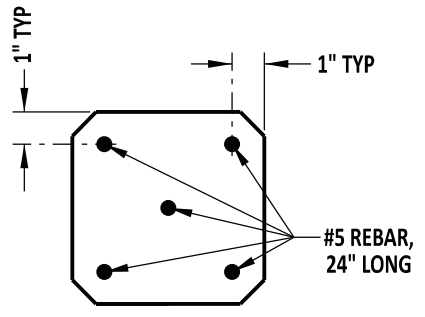
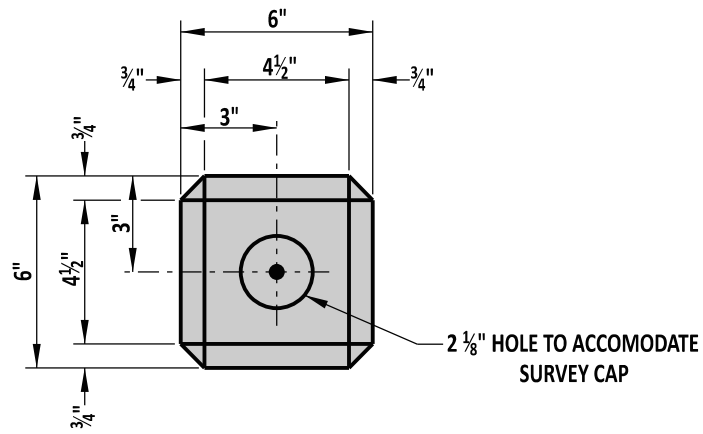


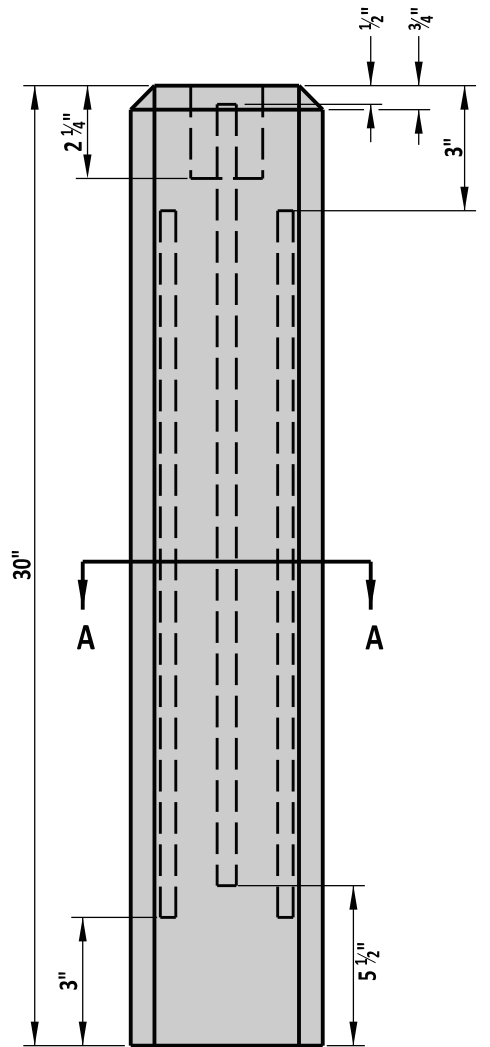
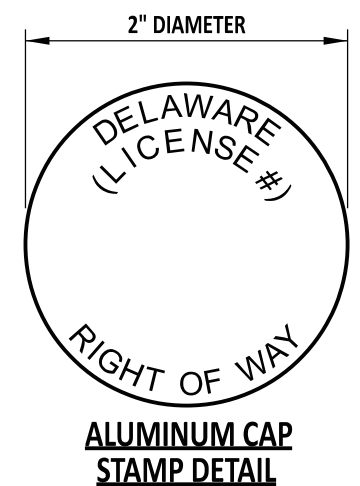
SCALE : NTS

- NOTES : 1). LONGITUDINAL STEEL SHALL BE HELD IN PLACE BY CRADLES.
 2). LETTERS ON CONCRETE MONUMENT TO BE COUNTERSUNK IN TOP OF MARKER 1/4".
 3). FLEXIBLE DELINEATORS ARE ONLY TO BE USED ON ROADS WITH A SPECIFIED DENIAL OF ACCESS OR CLASSIFIED AS MINOR ARTERIALS OR HIGHER. ON ALL OTHER ROAD CLASSIFICATIONS, A WOODEN STAKE SHALL BE PLACED WITH "ROW" HANDWRITTEN VERTICALLY IN 1" TALL LETTERS.
 4). PLACE CAP ON CONCRETE MONUMENT SO THAT TOP OF CAP IS FLUSH WITH THE TOP OF THE CONCRETE MONUMENT.
 5). IN HOT-MIX OR CONCRETE, PLACE A CONCRETE SURVEY MARKER IN LIEU OF A REBAR AND CAP. SEE REBAR AND CAP ITEM SPECIFICATION FOR MORE INFORMATION.

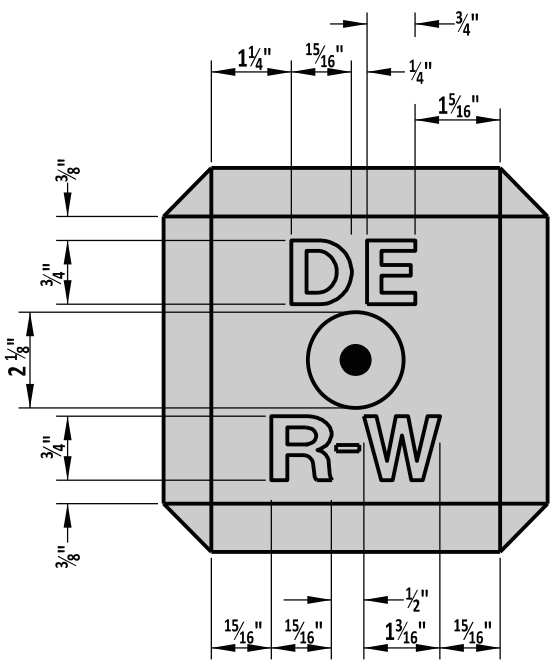


SECTION A-A

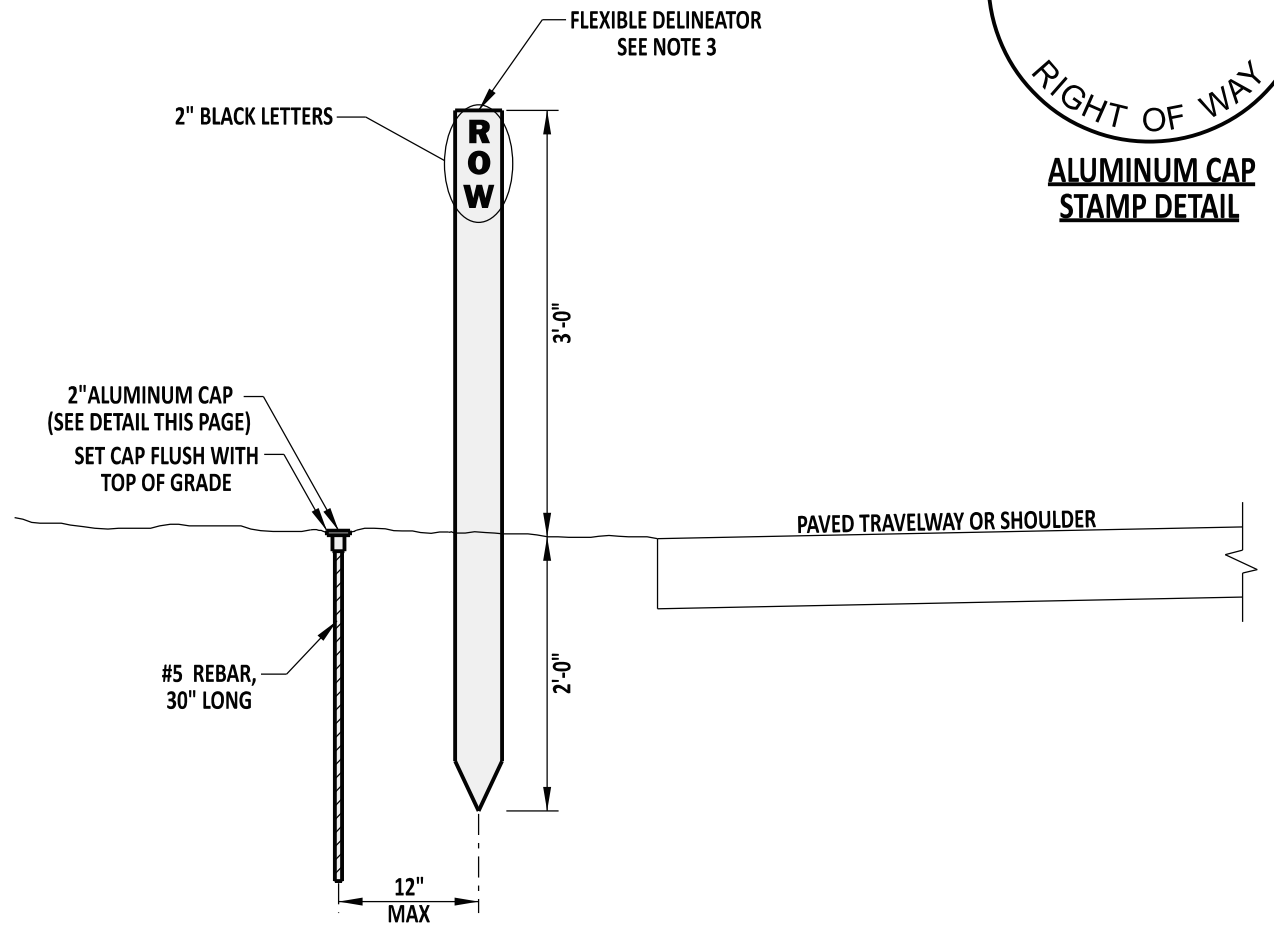
TOP



ELEVATION



TOP DETAIL



REBAR AND CAP WITH FLEXIBLE DELINEATOR DETAIL

DELAWARE DEPARTMENT OF TRANSPORTATION

RIGHT OF WAY MONUMENTATION			
STANDARD NO.	M-2 (2017)	SHT. 1	OF 1

APPROVED	SIGNATURE ON FILE	5/31/2017
	CHIEF ENGINEER	DATE
RECOMMENDED	SIGNATURE ON FILE	5/18/2017
	DESIGN ENGINEER	DATE