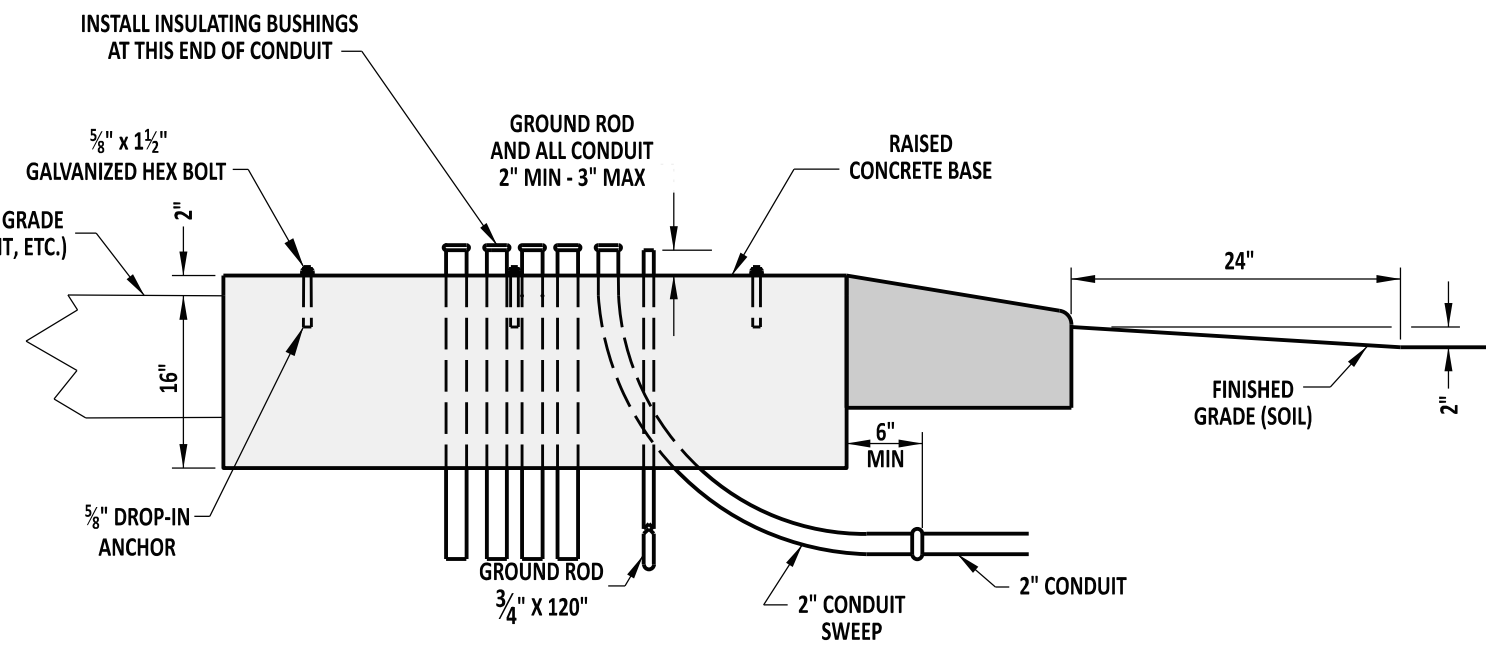
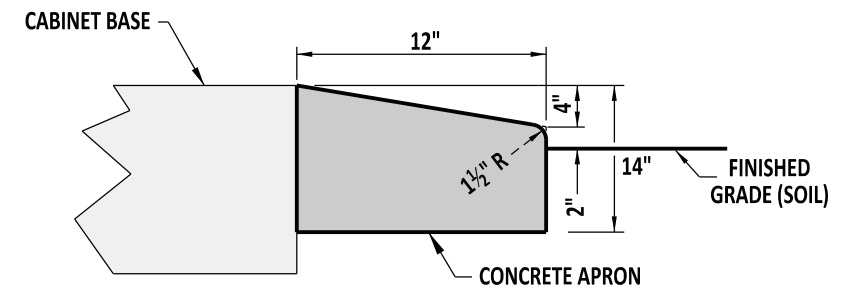


**"P & R" CABINET  
PLAN VIEW**



**SECTION A-A**



**SECTION B-B**

**NOTE:**

- 1). CONCRETE APRON IS REQUIRED ONLY WHEN CABINET BASE IS INSTALLED IN EARTH AREAS OR AS DIRECTED ON PLAN.
- 2). CONDUITS SHALL BE EVENLY SPACED, WITH MINIMUM 2" WIDTH ESTABLISHED BETWEEN ALL CONDUITS.



**DELAWARE  
DEPARTMENT OF TRANSPORTATION**

**CABINET BASES, TYPES P & R**

STANDARD NO. T-4 (2017)

SHT. 2 OF 2

**APPROVED**

SIGNATURE ON FILE  
CHIEF ENGINEER

5/31/2017  
DATE

**RECOMMENDED**

SIGNATURE ON FILE  
DESIGN ENGINEER

5/18/2017  
DATE