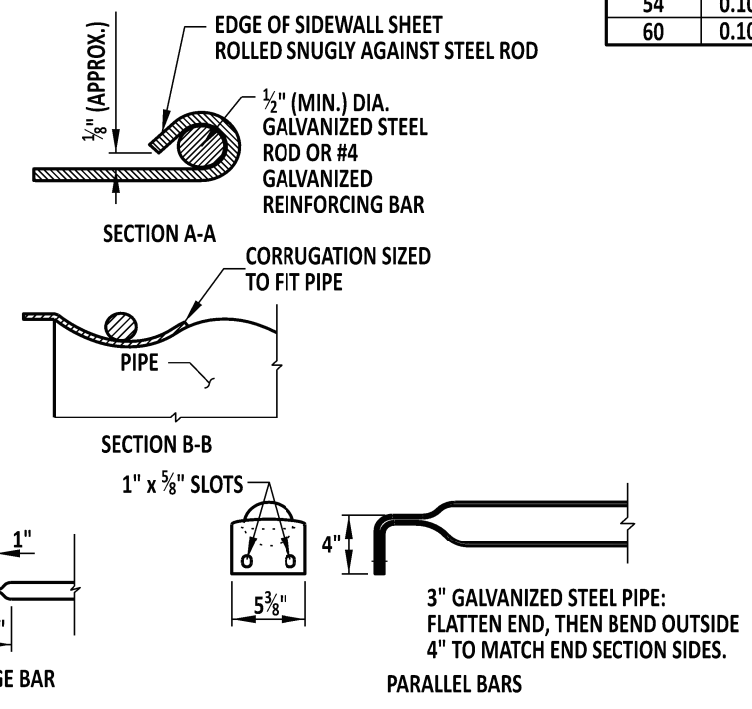
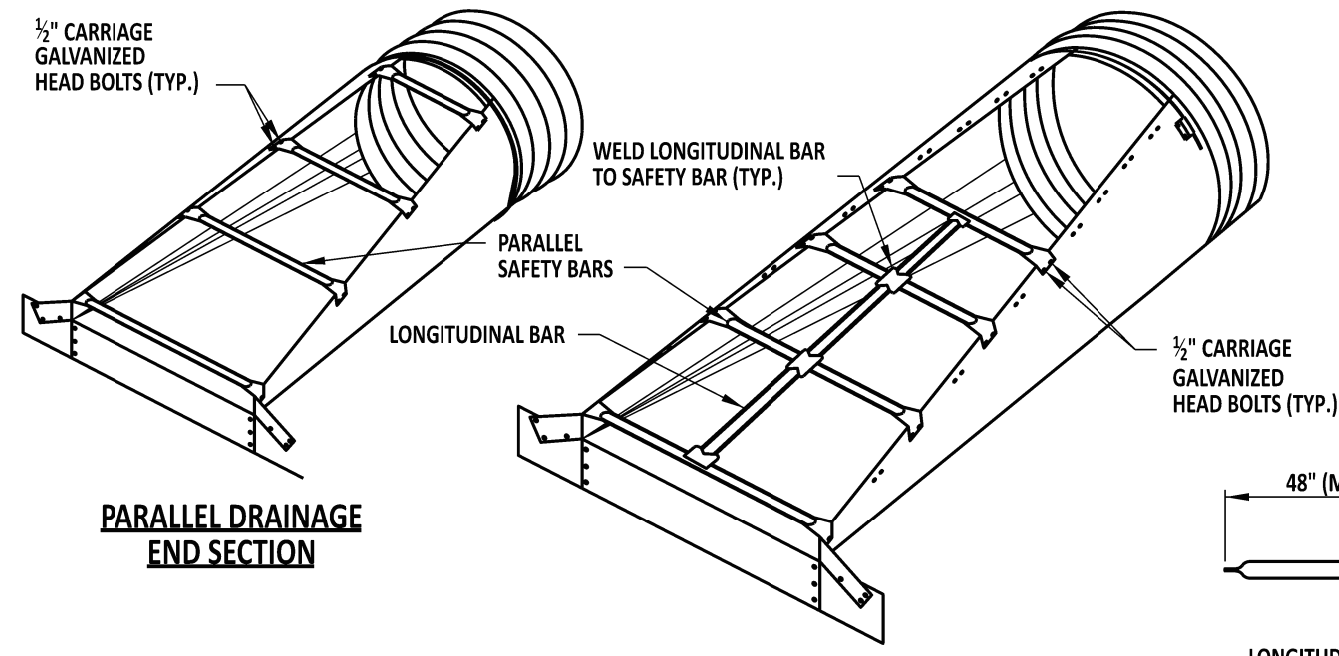


**METAL END SECTIONS FOR ROUND PIPE CULVERT**

PIPE SIZE D INCHES	METAL THICK (MIN.) INCH/GAGE	DIMENSIONS IN INCHES					
		A	H	W	OVERALL WIDTH	L	
						Slope=4	Slope=6
18	0.064/16	8	6	24	40	32	32
24	0.064/16	8	6	30	46	55	83
30	0.109/12	12	9	36	60	79	118
36	0.109/12	12	9	42	66	102	154
42	0.109/12	16	12	48	80	126	189
48	0.109/12	16	12	54	86	150	224
54	0.109/12	16	12	60	92	173	260
60	0.109/12	16	12	66	98	197	295



- NOTES:**
- 1). USE END SECTIONS ON 1V:4H TO 1V:6H SLOPES ONLY. USE TOE PLATE EXTENSION WHERE SHOWN ON THE PLANS.
  - 2). FABRICATE SAFETY AND LONGITUDINAL BARS FROM STEEL PIPE CONFORMING TO ASTM SCHEDULE 40 SPECIFICATIONS. GALVANIZE BARS HOT DIPPED AFTER FABRICATION.
  - 3). A LONGITUDINAL BAR IS REQUIRED FOR CROSS DRAINAGE END SECTIONS WHEN THE SPAN IS GREATER THAN 30". USE ADDITIONAL LONGITUDINAL BARS IF SPACING EXCEEDS 30" ON LARGER END SECTIONS.
  - 4). 18" DIAMETER SLEEVES HAVE A THICKNESS OF 0.079", ALL OTHERS ARE 0.109".