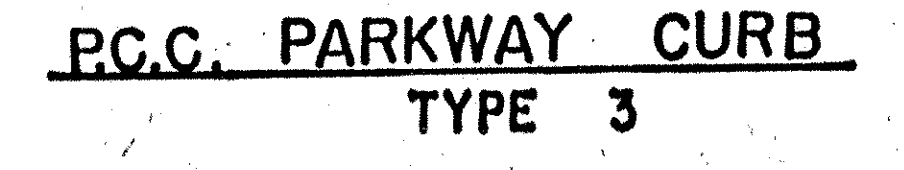
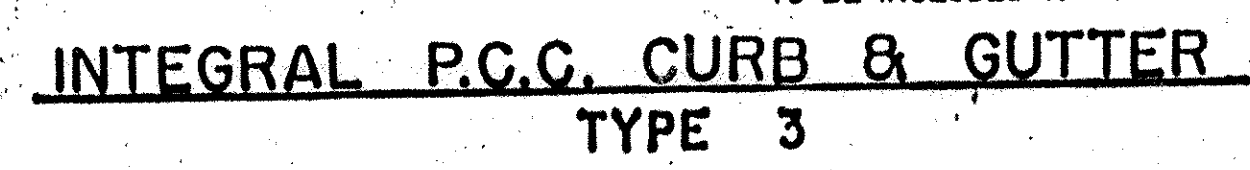
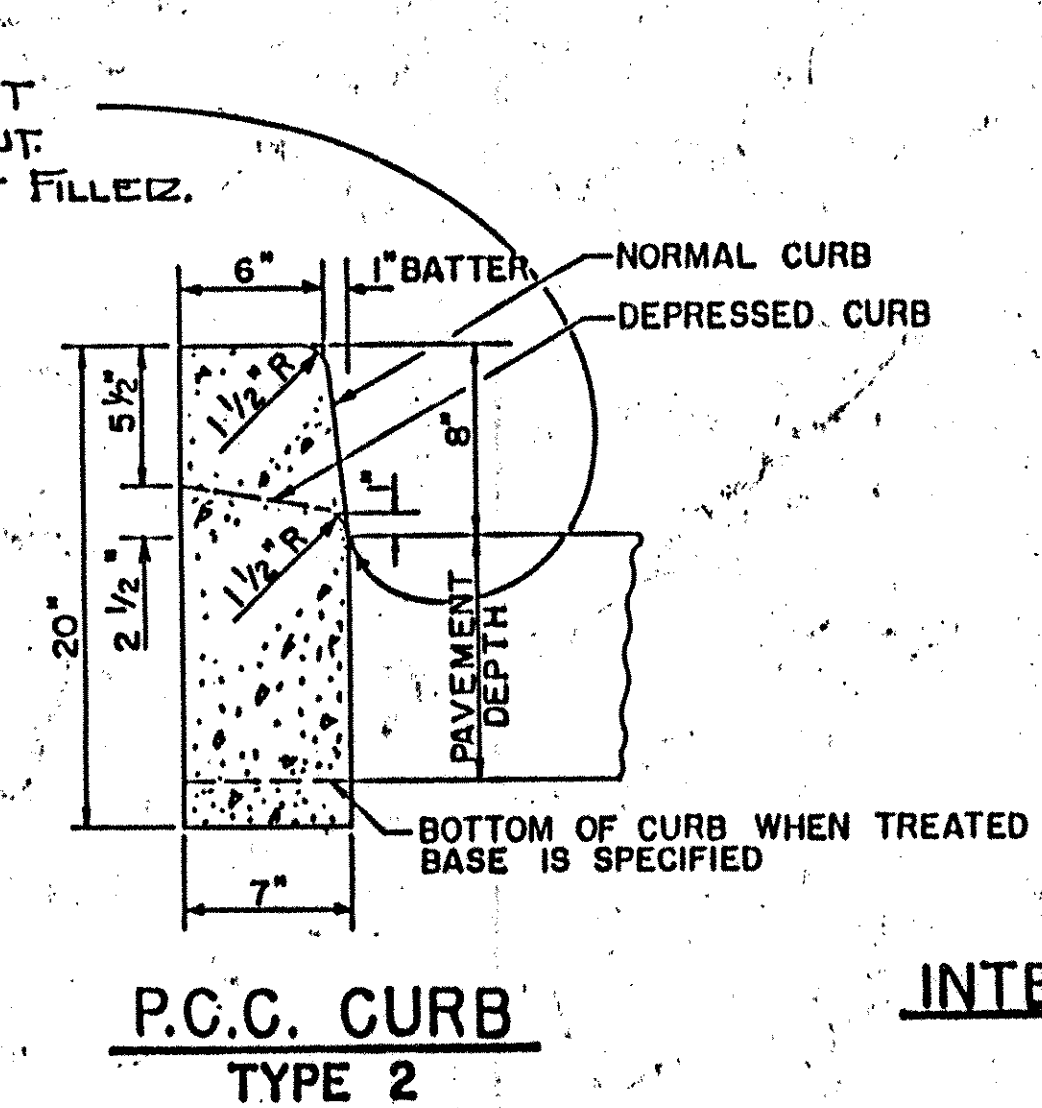
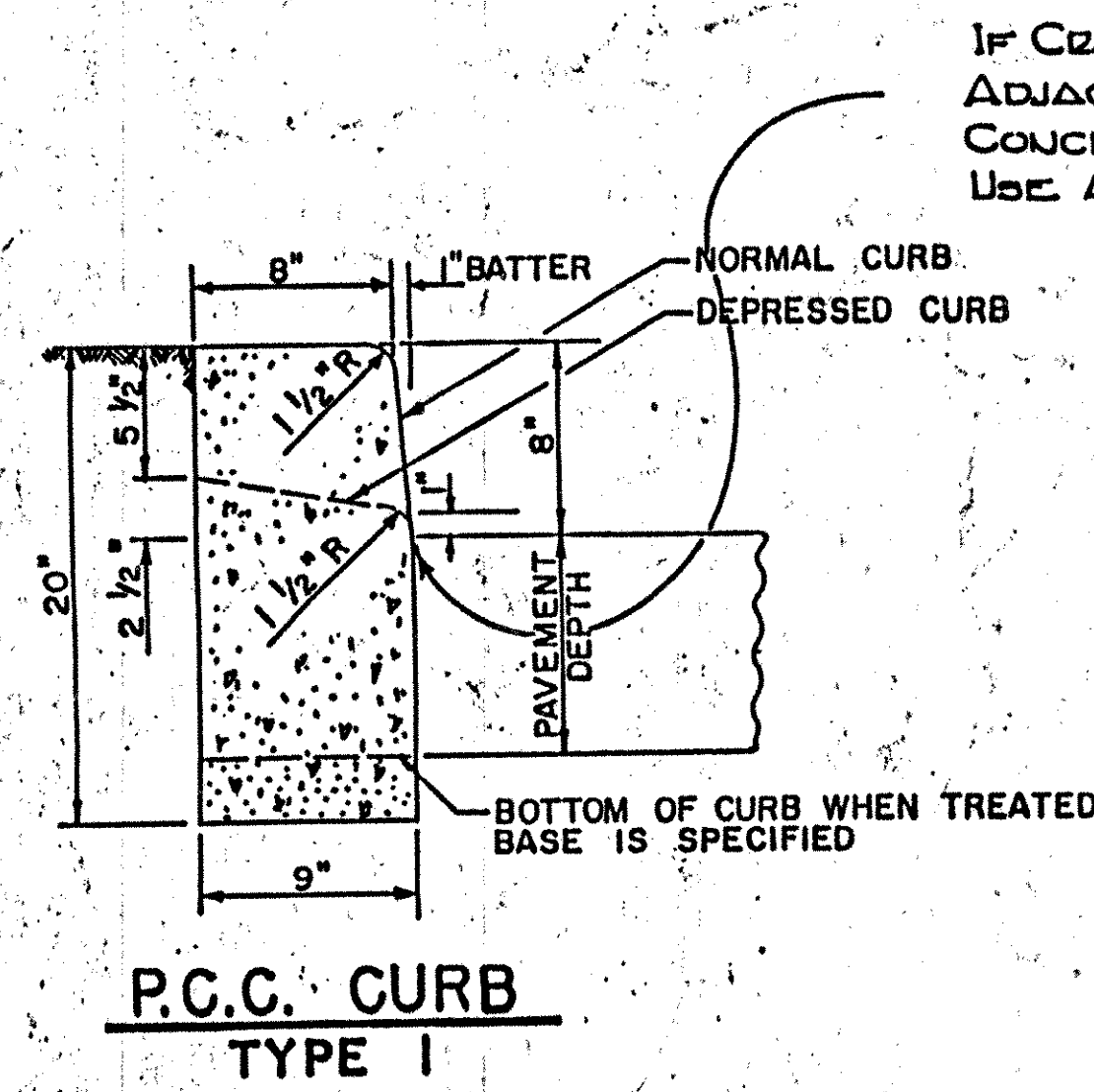
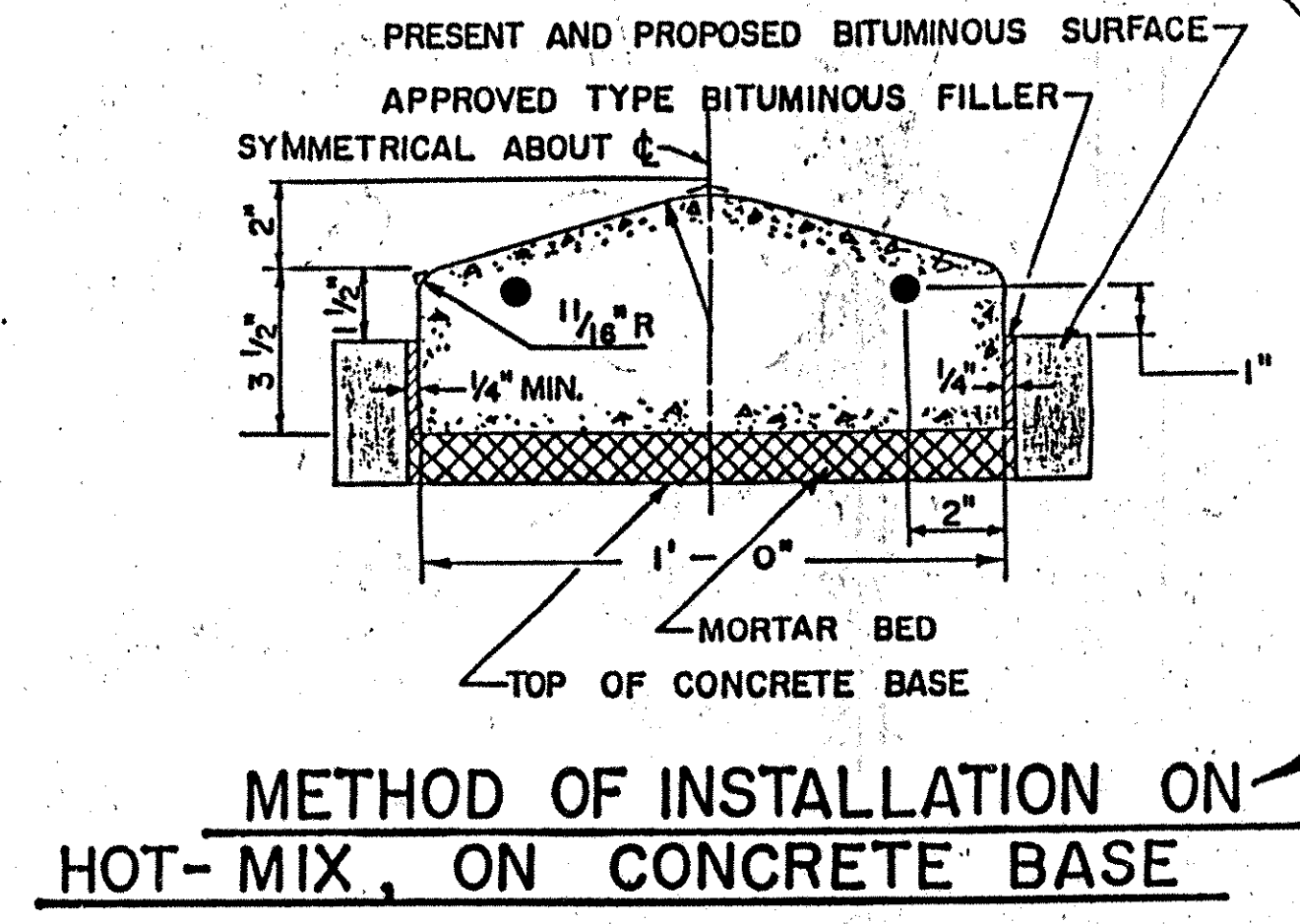
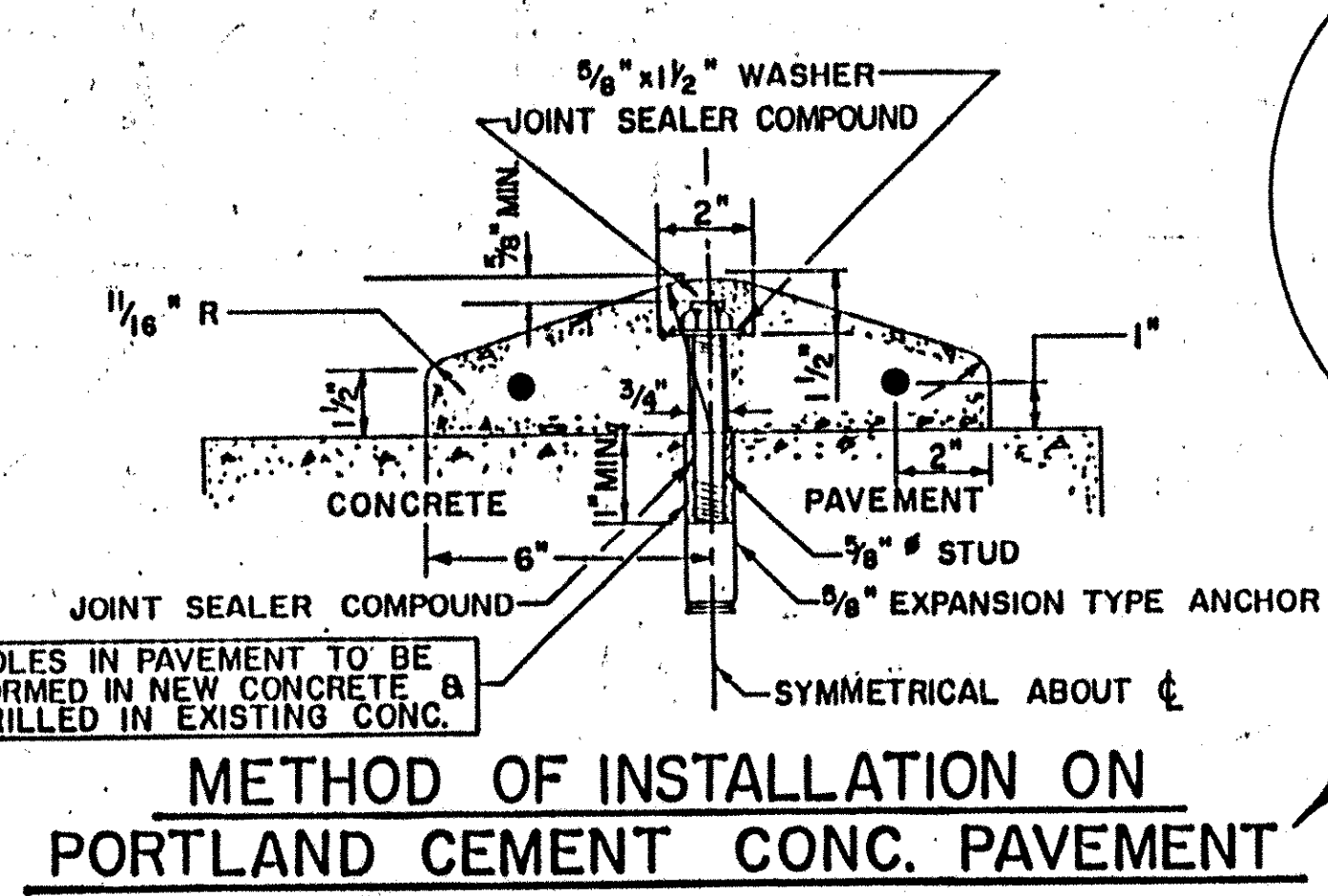
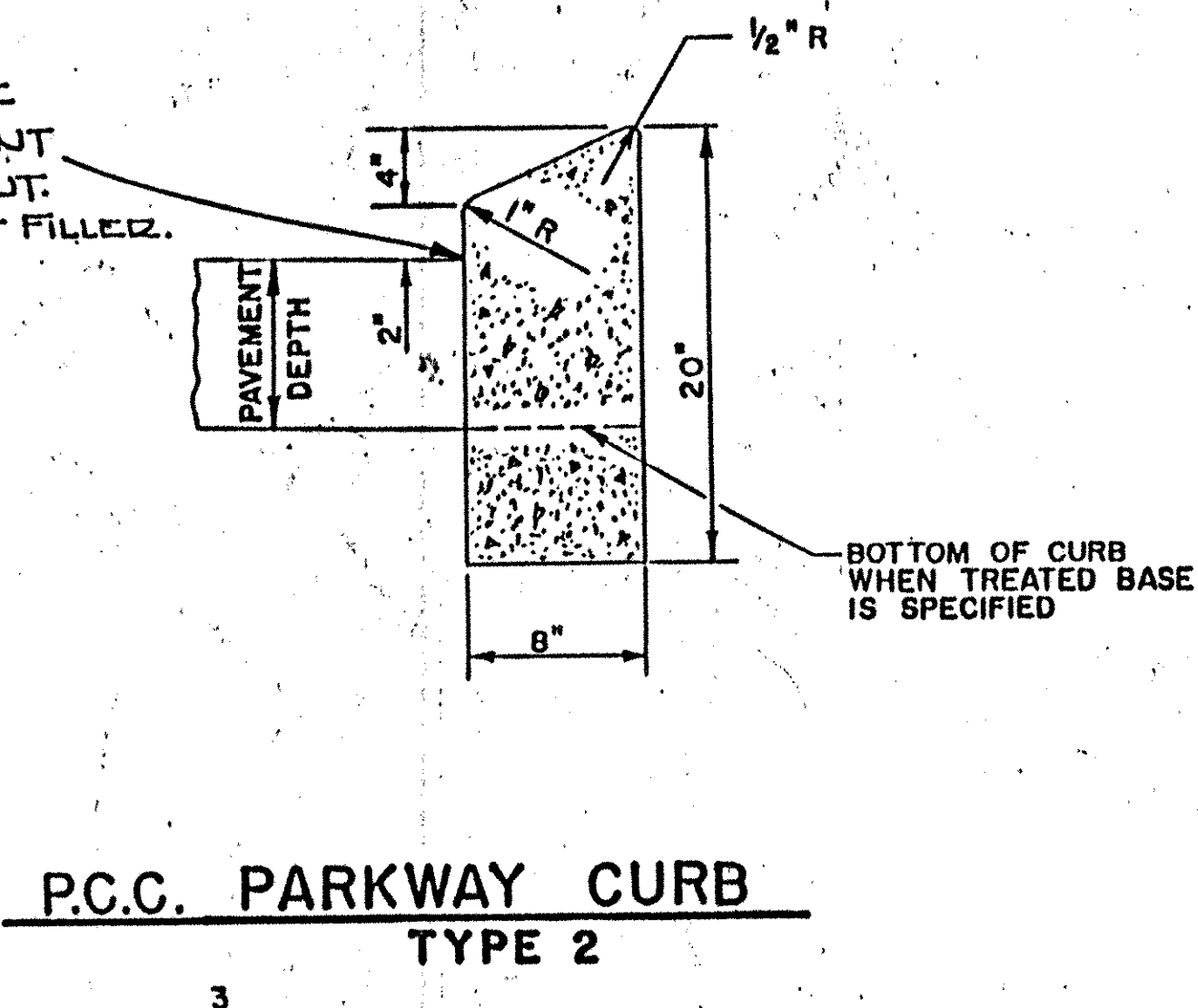
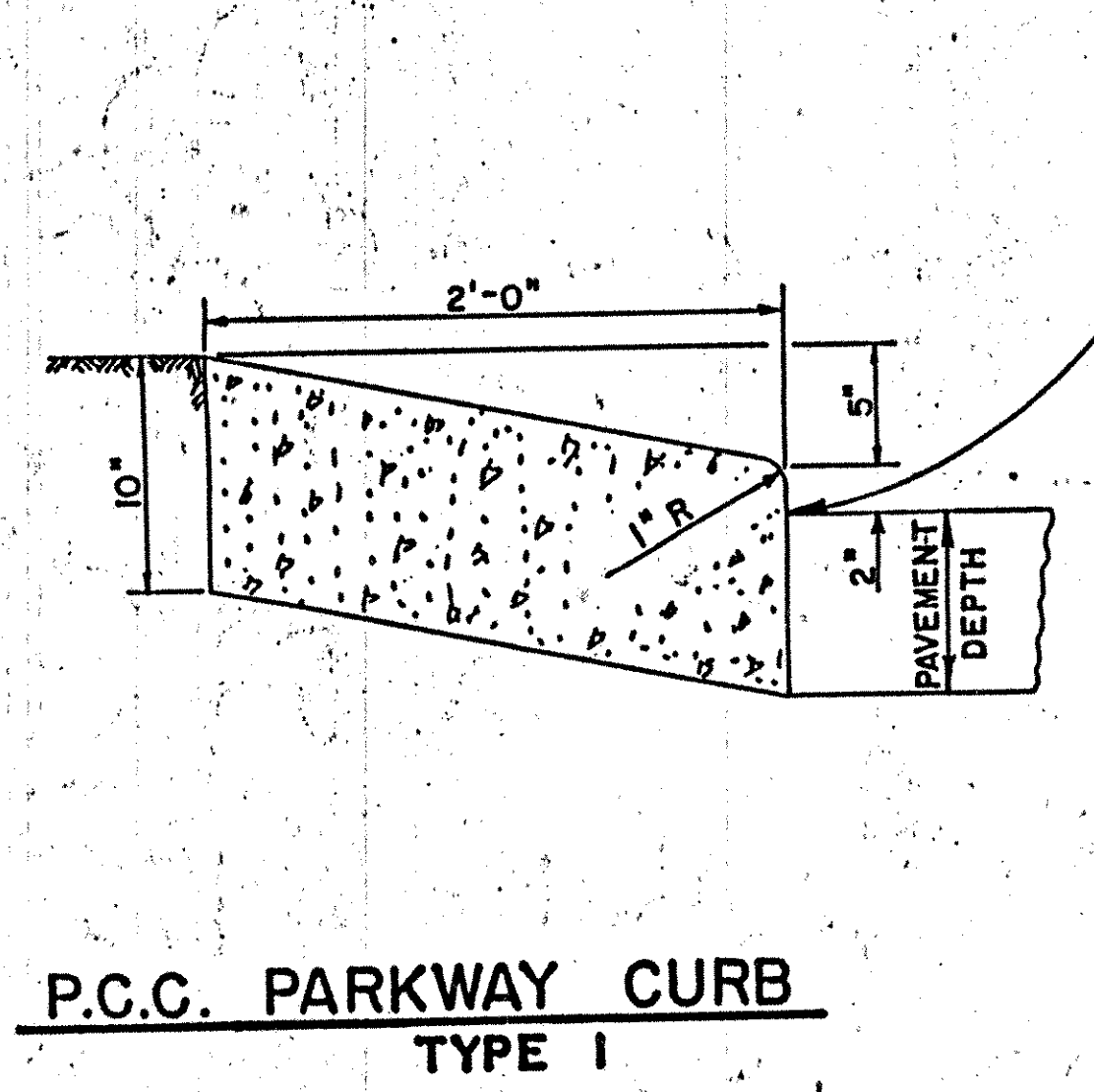
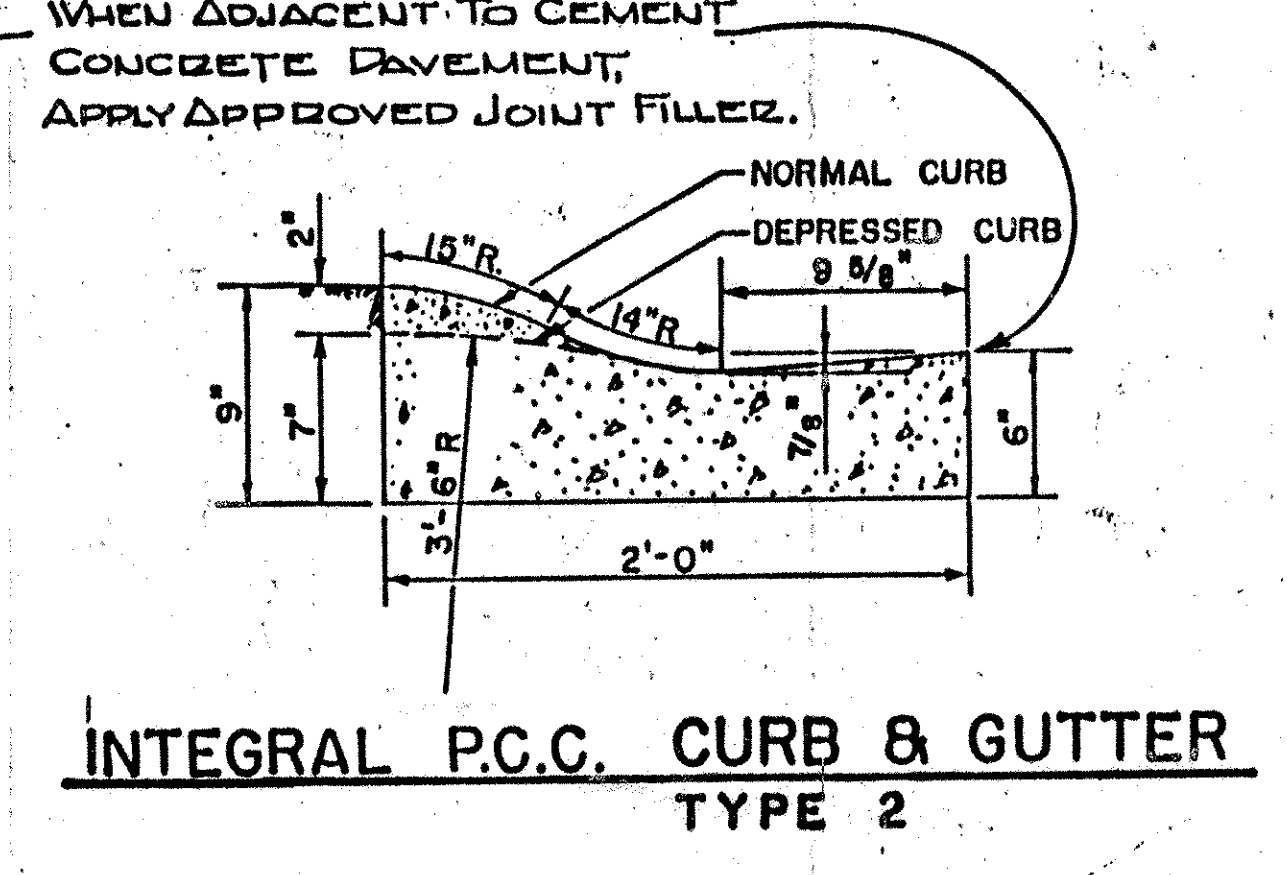
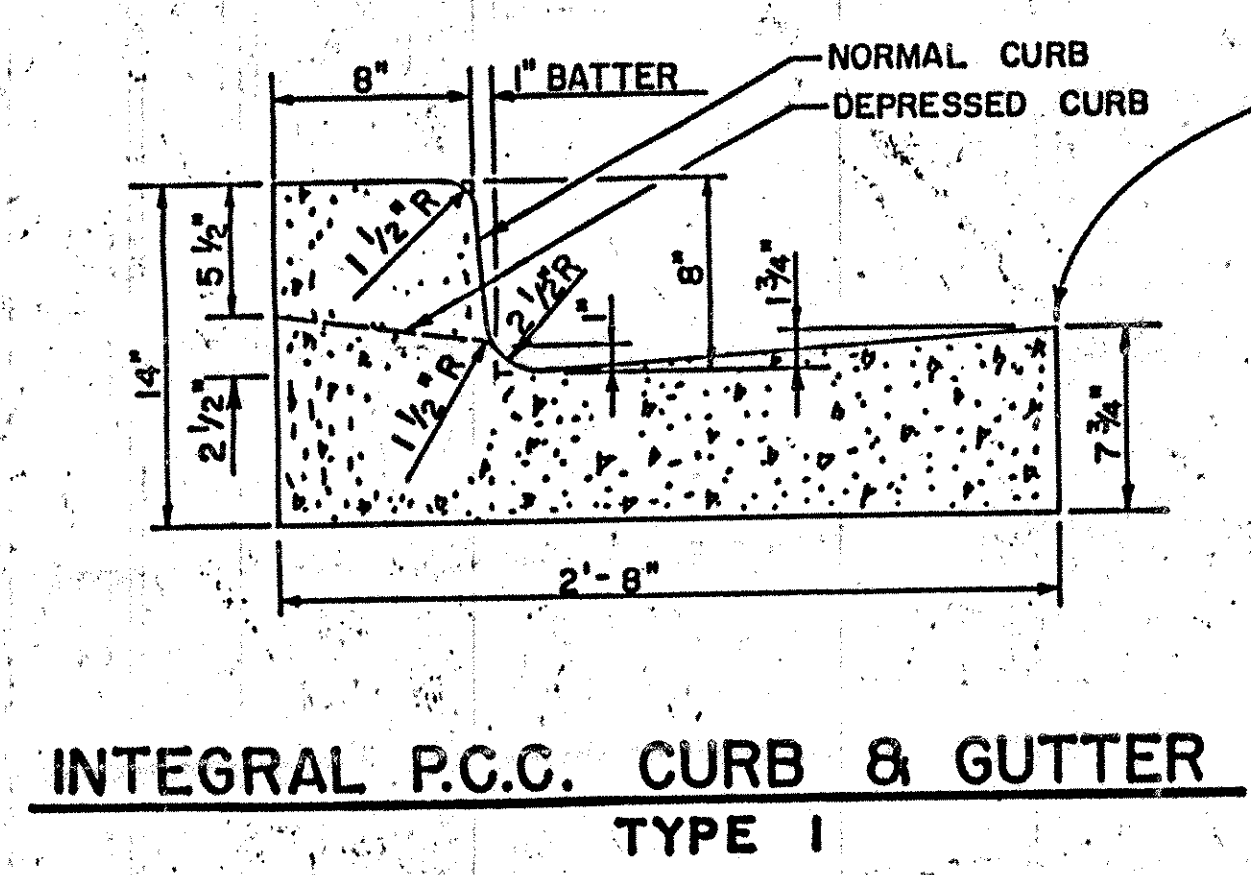
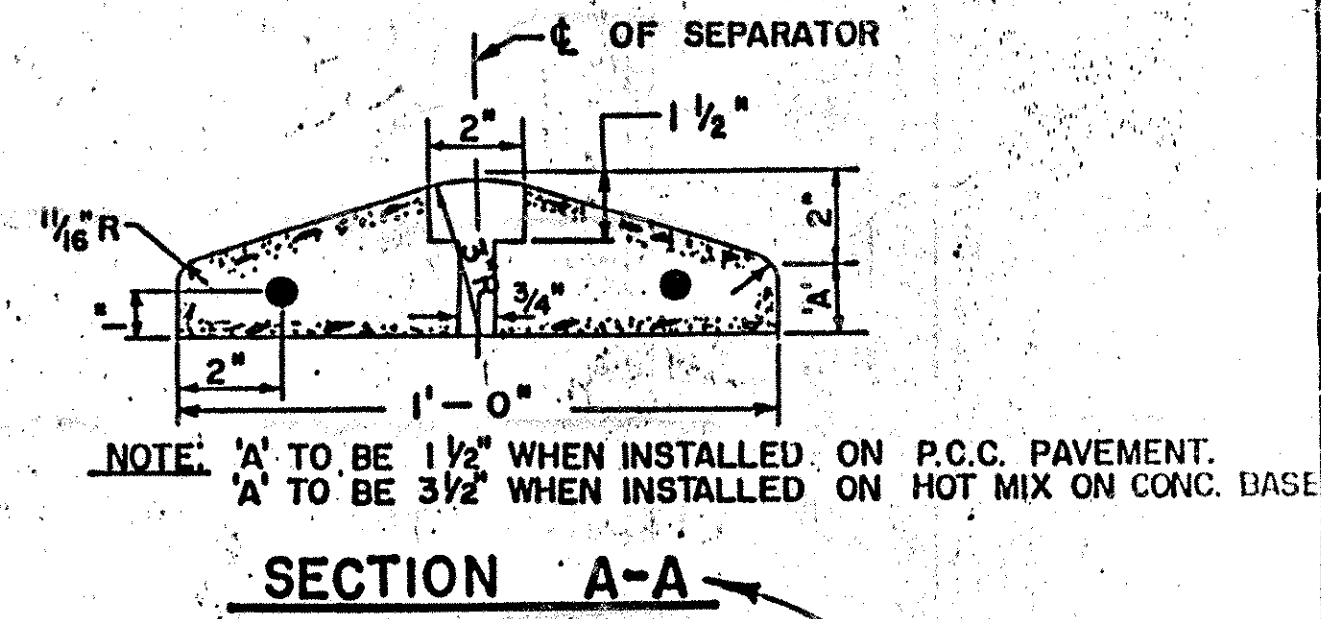
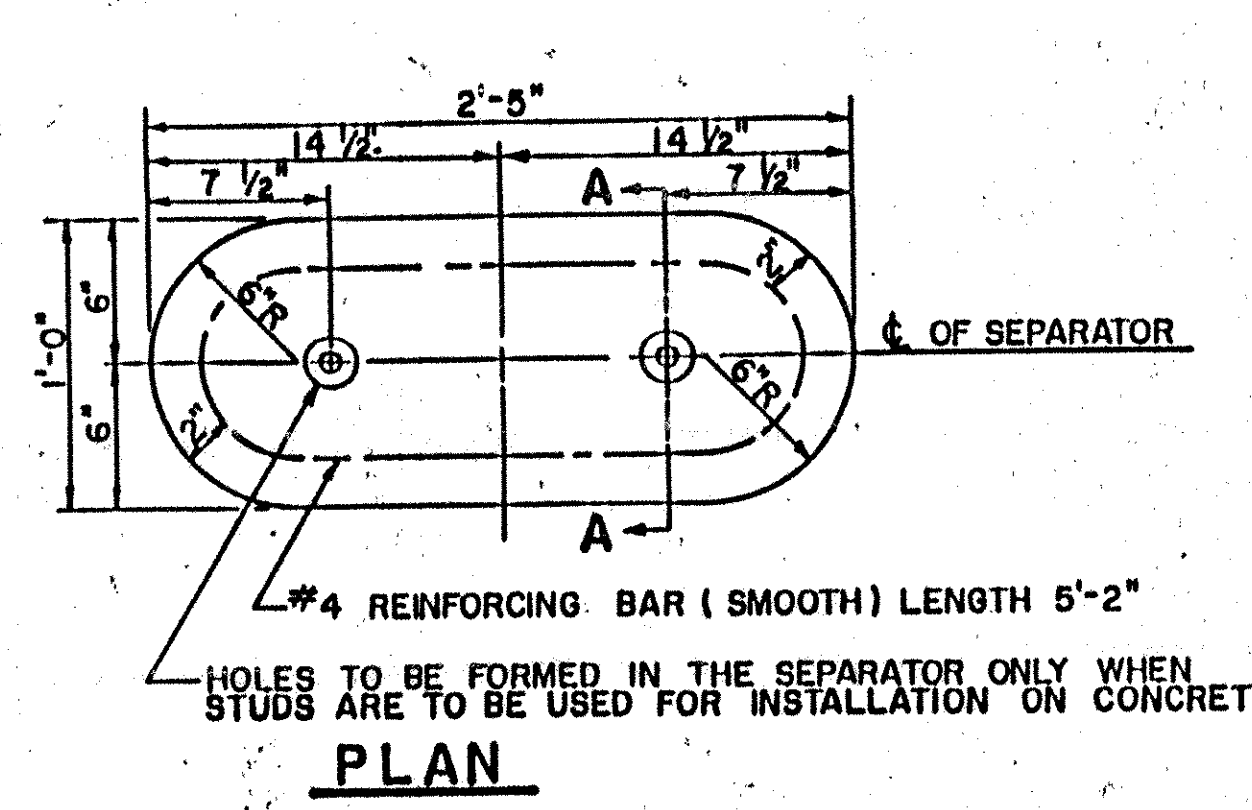


COUNTY	CONTRACT	P. R. A. SER. NO.	STATE	FED. AID PROJECT NO.	SHEET NO.	TOTAL SHEETS
	2		DEL.			
STANDARD SHEET C-2						
CURB & CROSSABLE TRAFFIC SEPARATORS						
PREL. TRACING H.R.C.		DESIGN J.E.R.		CHKD. E.L.W.		
REVISIONS						
DELETED TYPE 1 HOT-MIX CURB. ADDED TYPE 3 INTEGRAL CURB & GUTTER AND TYPE 3 PARKWAY CURB. 10-29-70 J.T.B.						
CORRECTED DIMENSION P.C.C. PARKWAY CURB TYPE 3. 6/25/71 Y.N.C.						
ADDED CURB MODIFICATION AND NOTE 1/31/77 R.F.R.						
APPROVED <i>[Signature]</i>					6-22-70	
DIRECTOR OF OPERATIONS					DATE	
<i>[Signature]</i>					6/22/70	
DEPUTY DIRECTOR - CHIEF ENGINEER					DATE	



CROSSABLE TRAFFIC SEPARATORS



SCALE 0 1 2 3

NOTE: COST OF JOINT FILLER & APPLICATION TO BE INCLUDED IN UNIT PRICE BID FOR CURB.

NOTE: REINFORCING STEEL AND ALL OTHER ITEMS NECESSARY FOR THE CONSTRUCTION AND PLACEMENT OF THE SEPARATORS, SHALL BE INCLUDED IN THE UNIT PRICE BID FOR CROSSABLE TRAFFIC SEPARATORS. THE SEPARATORS SHALL NOT BE PLACED UNTIL THE BITUMINOUS PAVEMENT HAS BEEN COMPACTED. SAW PRESENT AND PROPOSED BITUMINOUS PAVEMENT TO DEPTH AS SHOWN. PLACE MORTAR BED UNDER SEPARATOR TO INSURE A LEVEL SECTION AND THE PROPER HEIGHT AS SHOWN ABOVE.