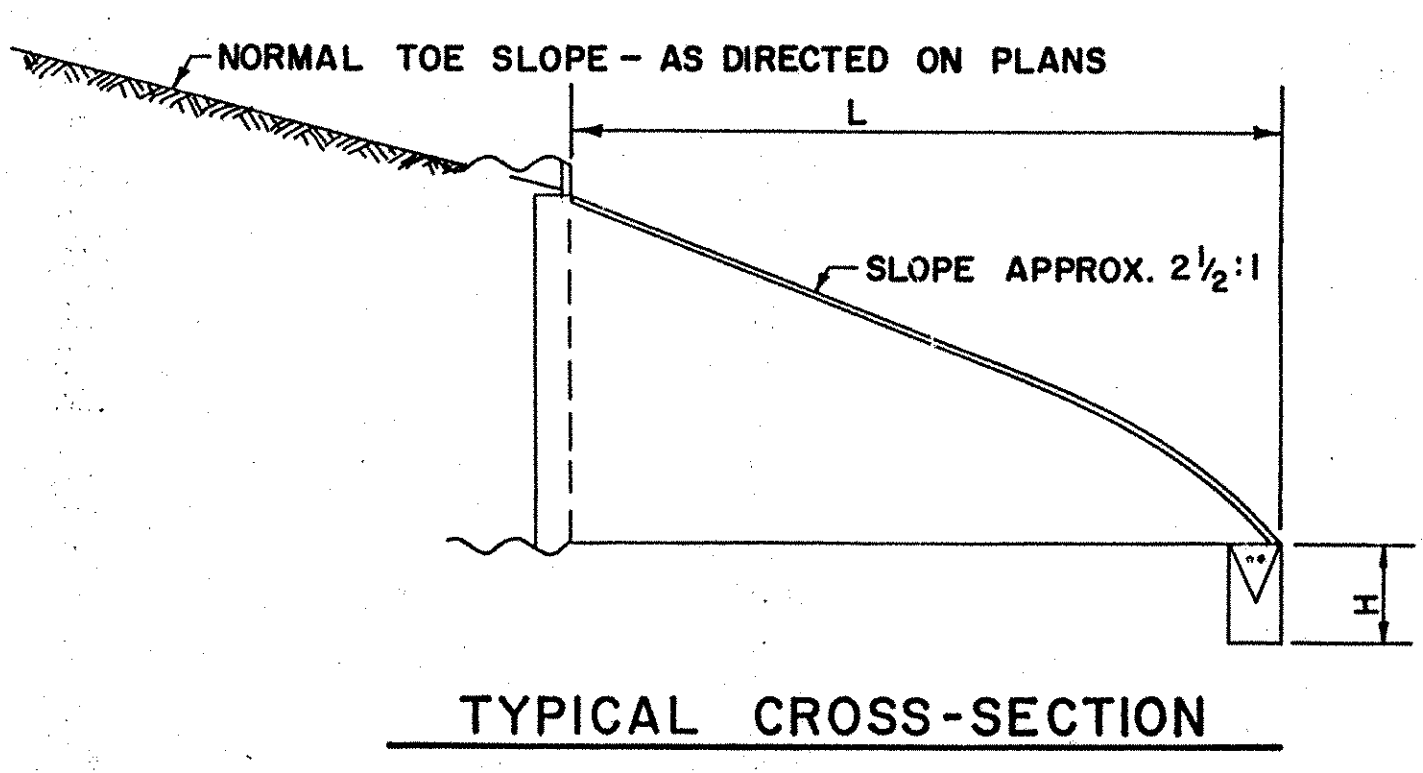
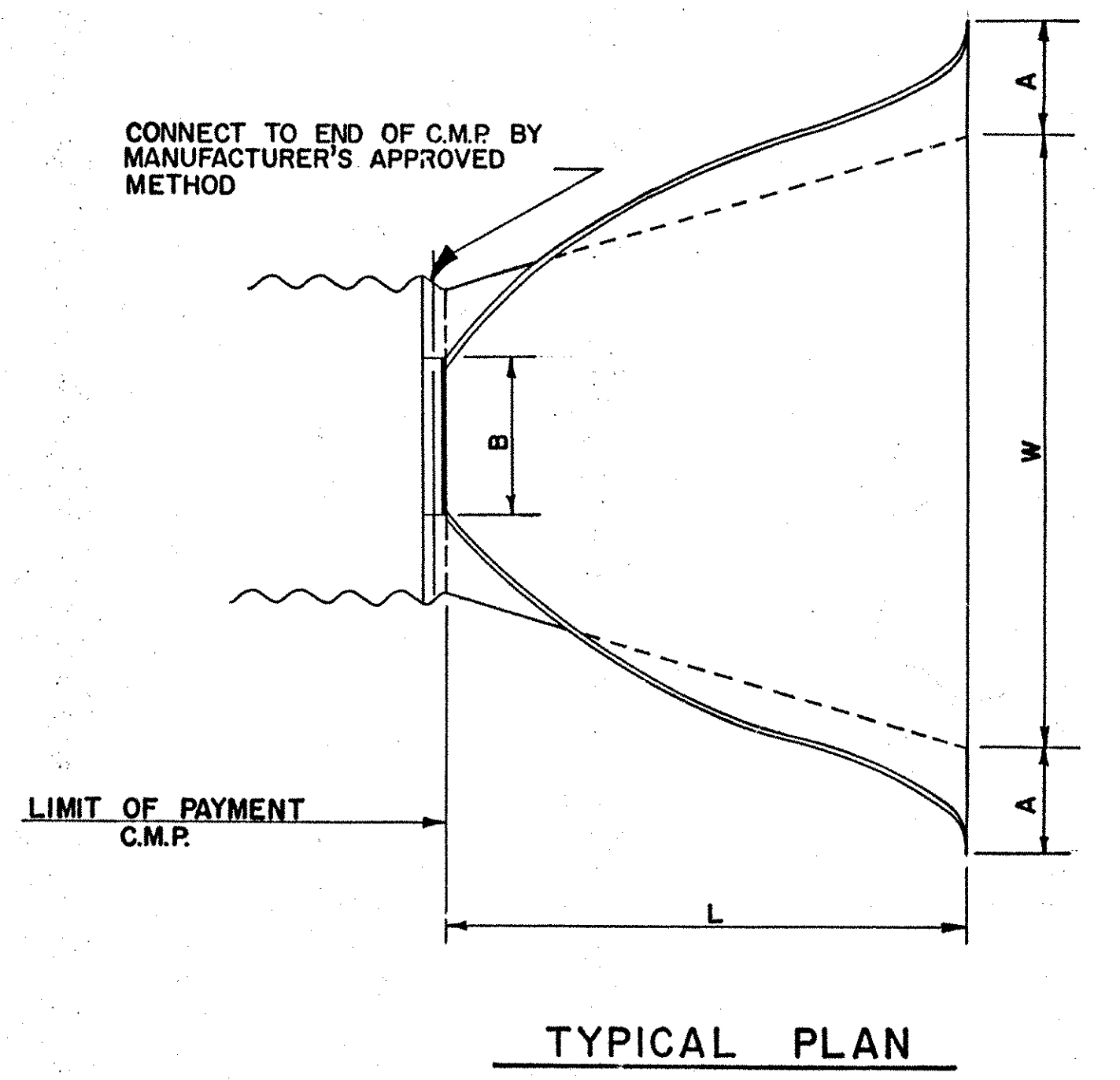


NOTE: END SECTIONS SHALL BE REINFORCED TO CONFORM TO THE REQUIREMENTS OF CLASS III, WALL B, AASHTO M 170, REINFORCED CONCRETE PIPE.

R.C.P. - STANDARD FLARED END SECTION

DIAMETER	WALL	SLOPE	A	B	C	D	E	R1	R2
12"	2"	3:1	4"	2'-0"	4'-0 ⁷ / ₈ "	6'-0 ⁷ / ₈ "	2'-0"	10 ¹ / ₈ "	9"
15"	2 ¹ / ₄ "	3:1	6"	2'-3"	3'-10"	6'-1"	2'-6"	12 ¹ / ₂ "	11"
18"	2 ¹ / ₂ "	3:1	9"	2'-3"	3'-10"	6'-1"	3'-0"	15 ¹ / ₂ "	12"
21"	2 ³ / ₄ "	3:1	9"	2'-11"	3'-2"	6'-1"	3'-6"	16 ¹ / ₈ "	13"
24"	3"	3:1	9 ¹ / ₂ "	3'-7 ¹ / ₂ "	2'-6"	6'-1 ¹ / ₂ "	4'-0"	16 ³ / ₈ "	14"
27"	3 ¹ / ₄ "	3:1	10 ¹ / ₂ "	4'-0"	2'-1 ¹ / ₂ "	6'-1 ¹ / ₂ "	4'-6"	18 ³ / ₈ "	14 ¹ / ₂ "
30"	3 ¹ / ₂ "	3:1	1'-0"	4'-6"	1'-7 ³ / ₄ "	6'-1 ³ / ₄ "	5'-0"	18 ¹ / ₂ "	15"
33"	3 ³ / ₄ "	3:1	1'-1 ¹ / ₂ "	4'-10 ¹ / ₂ "	3'-3 ¹ / ₄ "	8'-1 ³ / ₄ "	5'-6"	23 ³ / ₄ "	17 ¹ / ₂ "
36"	4"	3:1	1'-3"	5'-3"	2'-10 ³ / ₄ "	8'-1 ³ / ₄ "	6'-0"	24 ⁵ / ₈ "	20"
42"	4 ¹ / ₂ "	3:1	1'-9"	5'-3"	2'-11"	8'-2"	6'-6"	27 ¹ / ₂ "	22"
48"	5"	3:1	2'-0"	6'-0"	2'-2"	8'-2"	7'-0"	28 ¹ / ₂ "	22"
54"	5 ¹ / ₂ "	2.4:1	2'-3"	5'-5"	2'-11"	8'-4"	7'-6"	33 ¹ / ₈ "	24"



C.M.P. - STANDARD FLARED END SECTION

DIAMETER	GAGE (STEEL)	H ± 1"	L ± 1 ¹ / ₂ "	W ± 2"	A ± 1"	B (max.)
12"	16	6"	21"	24"	6"	6"
15"	16	6"	26"	30"	7"	8"
18"	16	6"	31"	36"	8"	10"
21"	16	6"	36"	42"	9"	12"
24"	16	6"	41"	48"	10"	13"
30"	14	8"	51"	60"	12"	16"
36"	14	9"	60"	72"	14"	19"
42"	12	11"	69"	84"	16"	22"
48"	12	12"	78"	90"	18"	27"
54"	12	12"	84"	102"	18"	30"
60"	12	12"	87"	114"	18"	33"
66"	12	12"	87"	120"	18"	36"
72"	12	12"	87"	126"	18"	39"
78"	12	12"	87"	132"	18"	42"
84"	12	12"	87"	138"	18"	45"

SPAN	RISE	GAGE (STEEL)	H ± 1"	L ± 1 ¹ / ₂ "	W ± 2"	A ± 1"	B (max.)
17"	13"	16	6"	19"	30"	7"	9"
21"	15"	16	6"	23"	36"	7"	10"
24"	18"	16	6"	28"	42"	8"	12"
28"	20"	16	6"	32"	48"	9"	14"
35"	24"	14	6"	39"	60"	10"	16"
42"	29"	14	8"	46"	75"	12"	18"
49"	33"	12	9"	53"	85"	13"	21"
57"	38"	12	12"	63"	90"	18"	26"
64"	43"	12	12"	70"	102"	18"	30"
71"	47"	12	12"	77"	114"	18"	33"
77"	52"	12	12"	77"	126"	18"	36"
83"	57"	12	12"	77"	138"	18"	39"

NOTE: ABOVE DETAILS AND DIMENSIONS ARE TO BE USED AS A GENERAL GUIDE. MINOR VARIATIONS, AS APPROVED BY THE ENGINEER, TO MEET INDIVIDUAL MANUFACTURER'S STANDARDS WILL BE ACCEPTABLE.