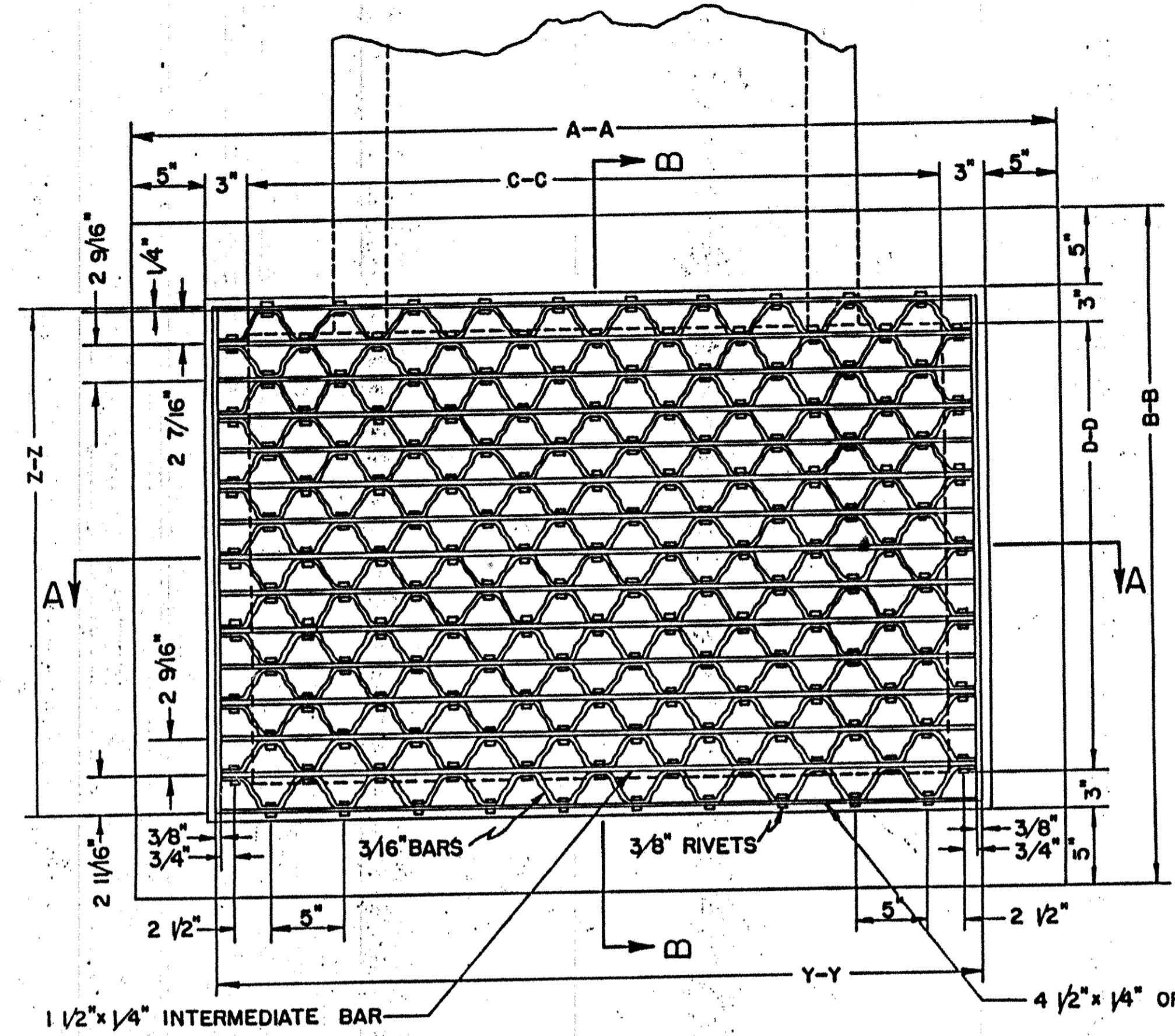
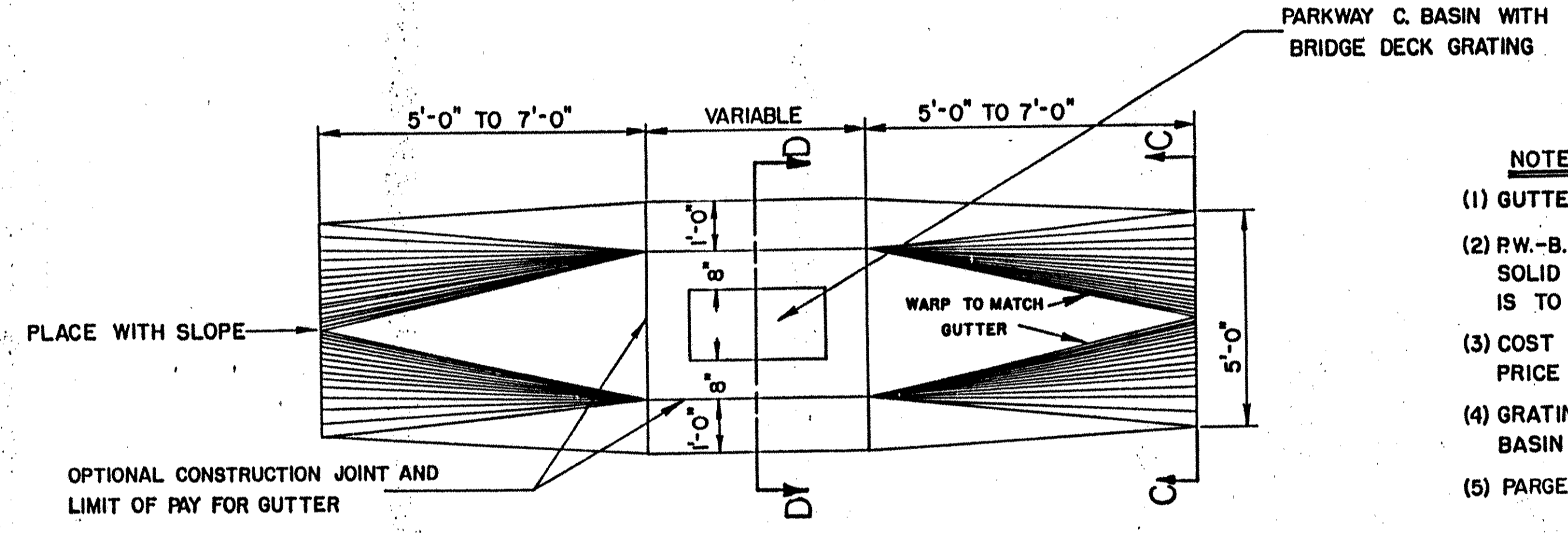
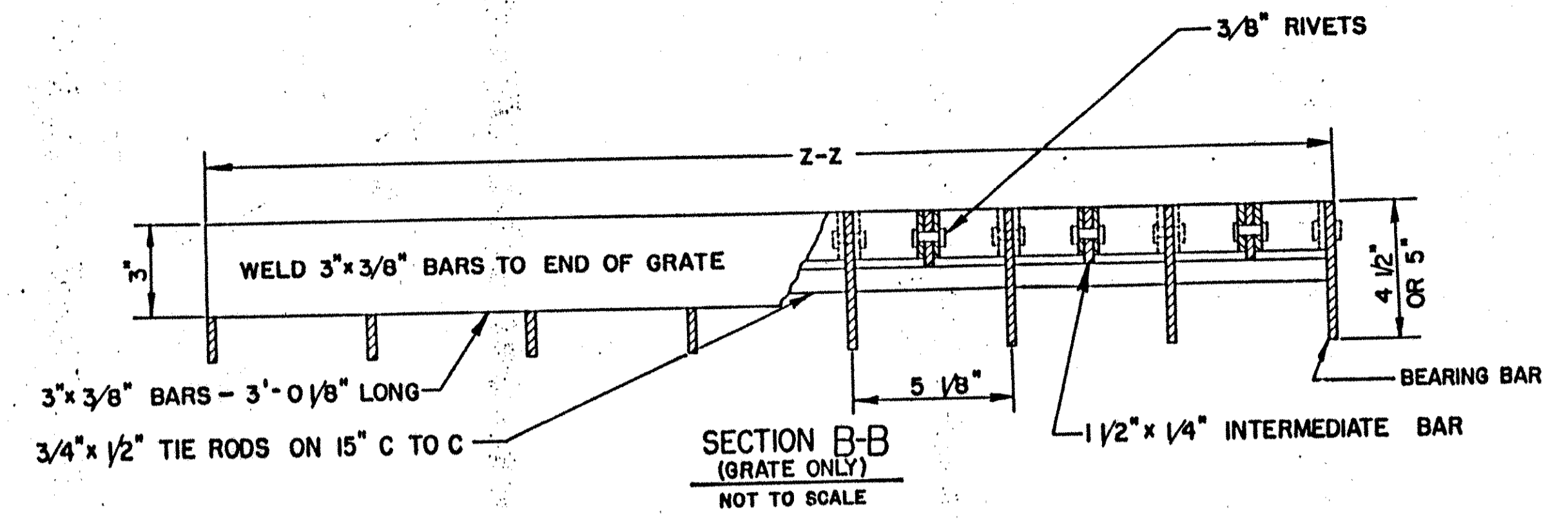


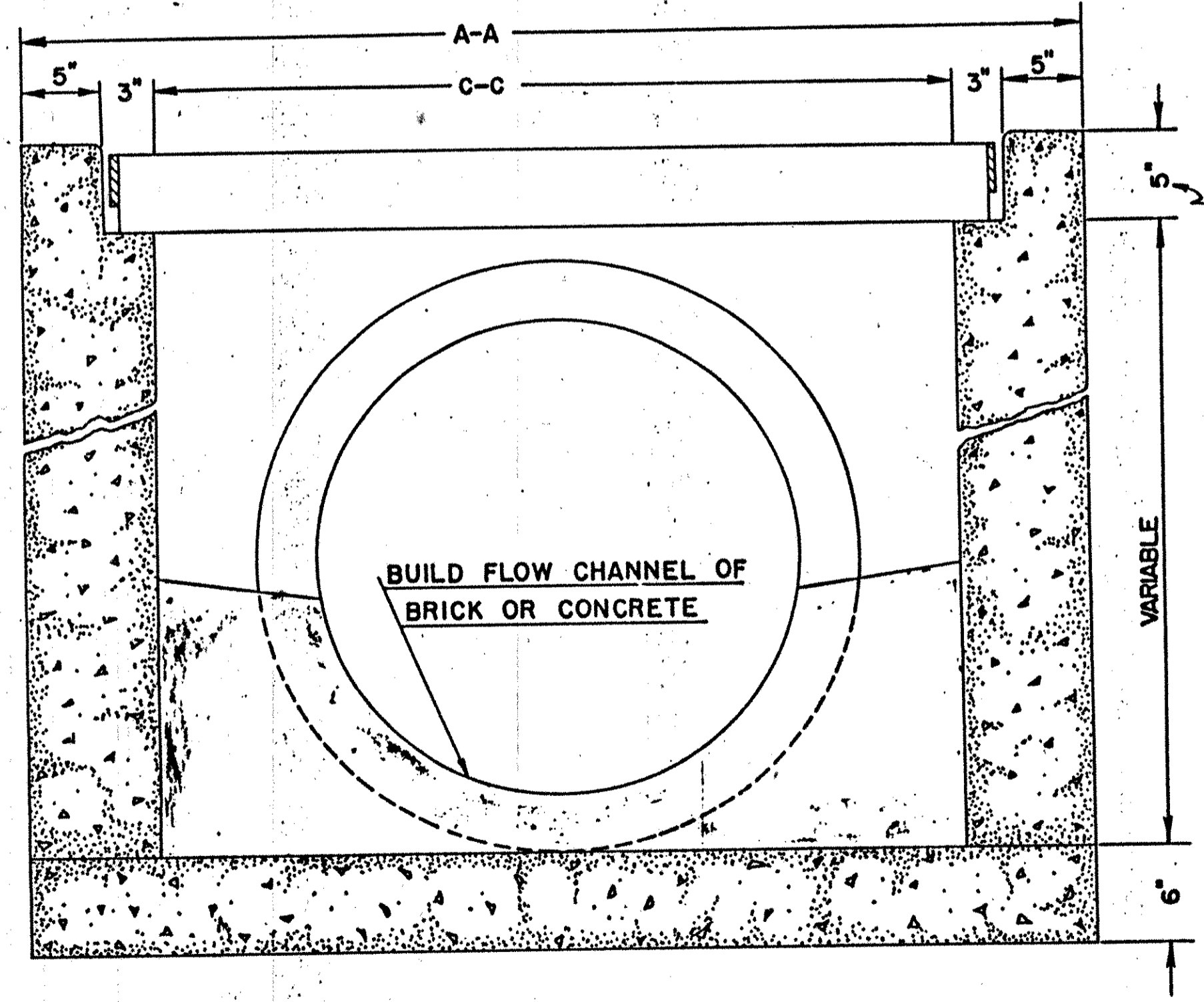
PARKWAY CATCH BASINS
 P.W.-B.D. 1
 P.W.-B.D. 2
 P.W.-B.D. 3
 P.W.-B.D. 4



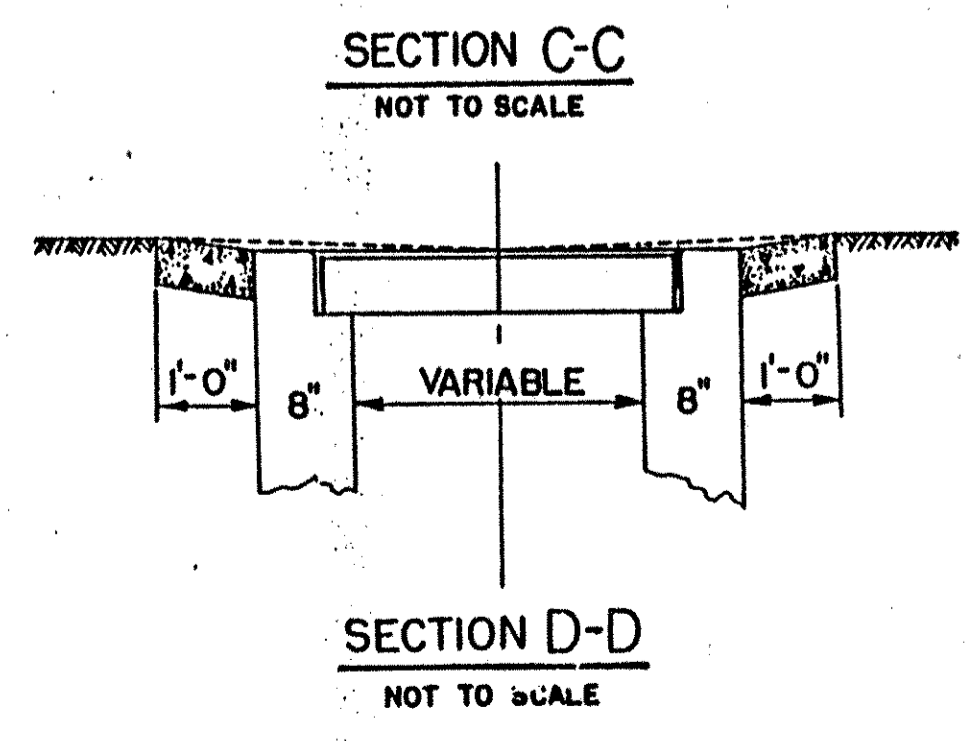
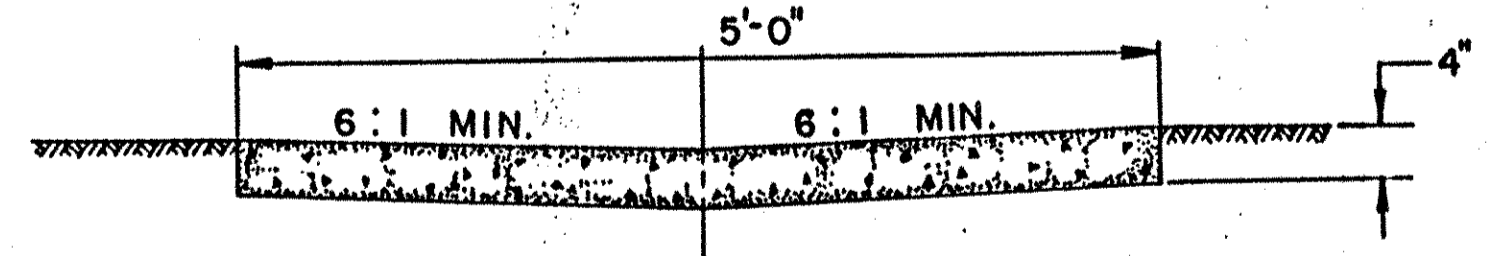
NOTE:
 SEE CATCH BASIN AND GRATING DATA
 BELOW FOR SIZES.



CONC. GUTTER TO BE USED WITH PARKWAY CATCH BASINS.
 NOT TO SCALE



NOTE:
 P.W.-B.D. 3 AND
 P.W.-B.D. 4 TO BE 5 1/2"



- NOTES:
- (1) GUTTER USED ONLY WHEN NOTED ON PLANS.
 - (2) P.W.-B.D. C. BASIN WALLS TO BE BRICK, CONCRETE, OR SOLID CONCRETE BLOCK, EXCEPT FOR UPPER 12" WHICH IS TO BE OF CEMENT CONCRETE MASONRY.
 - (3) COST OF CONCRETE MASONRY TO BE INCLUDED IN UNIT PRICE BID FOR STRUCTURE COMPLETE.
 - (4) GRATING INCLUDED IN UNIT PRICE BID FOR P.W.-B.D. CATCH BASIN GRATINGS TO BE GALVANIZED.
 - (5) TARGET BRICK OR BLOCK WITH 1/2" OF PORTLAND CEMENT MORTAR.
 - (6) P.C.C. GUTTER WILL BE PAID FOR UNDER SECTION 704, PORTLAND CEMENT CONCRETE GUTTER.
 - (7) CATCH BASINS MAY BE PRECAST. CONTRACTOR SHALL SUBMIT DETAILED PLANS SHOWING SECTIONS, JOINTS, REINFORCING AND OTHER PERTINENT INFORMATION FOR APPROVAL.
 - (8) STEPS ARE TO BE PLACED IN ALL CATCH BASINS & MANHOLE OVER 4' DEER. SEE STANDARD SHEET D-1. COST OF STEPS TO BE INCLUDED IN COST OF CATCH BASIN OR MANHOLE.

PARKWAY CATCH BASIN AND DRAIN GRATE DATA											
NUMBER OF CATCH BASIN	LARGEST PIPE SIZE		CATCH BASIN DATA					GRATING DATA		GRATING AREA & WEIGHT	
	A-A	B-B	WALL THICK.	A-A OUTSIDE	B-B OUTSIDE	C-C INSIDE	D-D INSIDE	BEARING BAR SIZES	Y-Y		Z-Z
P.W.-B.D. 1	30"	15"	8"	4'-5 1/2"	3'-3 3/8"	3'-1 1/2"	1'-11 7/8"	4 1/2" x 1/4"	3'-6 1/4"	2'-4 1/8"	8.39 sq ft 178 LBS.
P.W.-B.D. 2	36"	24"	8"	5'-3 3/4"	3'-11 1/2"	3'-11 1/4"	2'-7 1/2"	4 1/2" x 1/4"	4'-0 1/8"	3'-0 1/8"	13.11 sq ft 273 LBS.
P.W.-B.D. 3	42"	24"	8"	5'-8 1/4"	3'-11 1/2"	4'-4 1/4"	2'-7 1/2"	5" x 1/4"	4'-9 1/4"	3'-0 1/8"	14.36 sq ft 311 LBS.
P.W.-B.D. 4	48"	24"	8"	6'-1 1/4"	3'-11 1/2"	4'-9 1/4"	2'-7 1/2"	5" x 1/4"	5'-2 1/4"	3'-0 1/8"	15.62 sq ft 336 LBS.