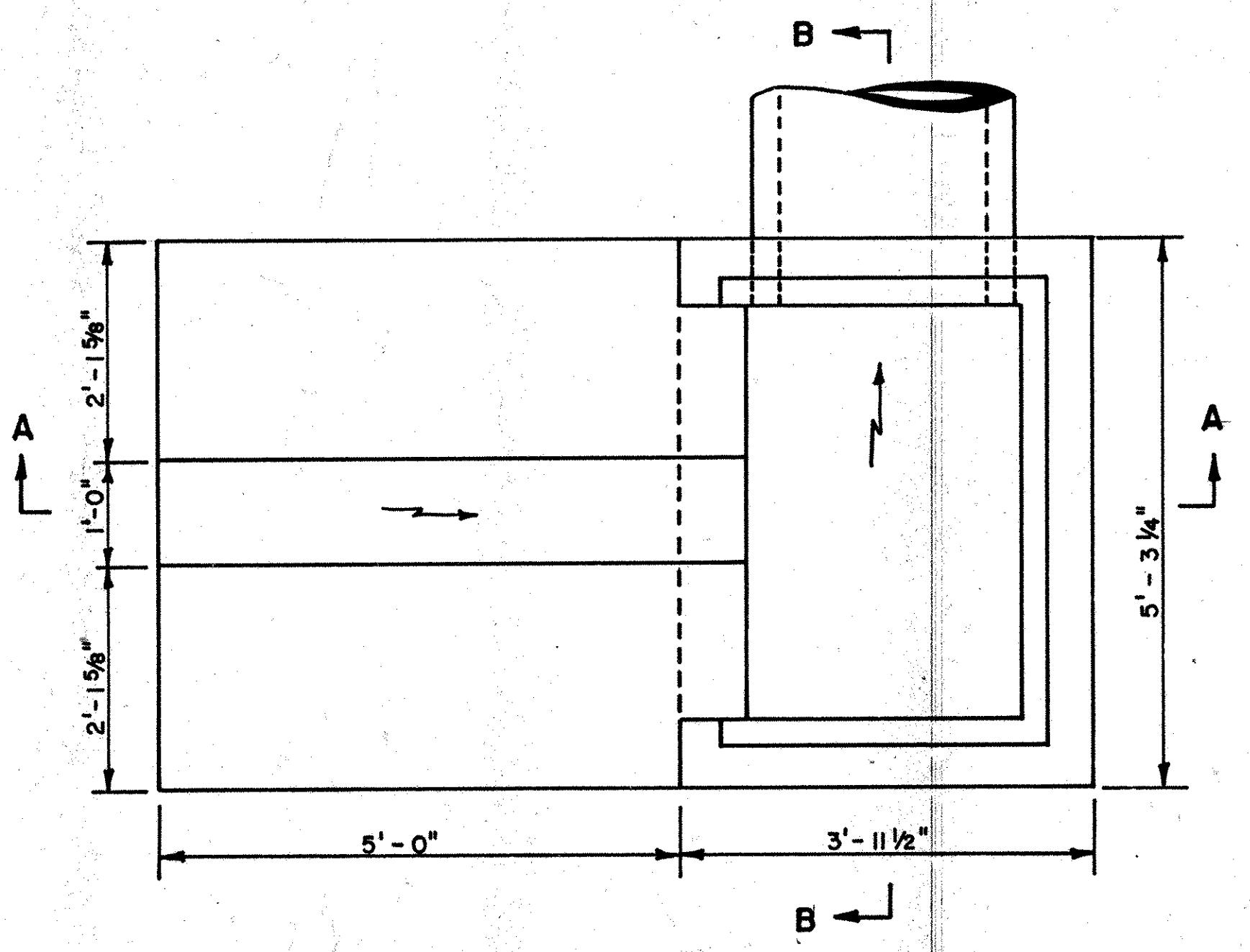
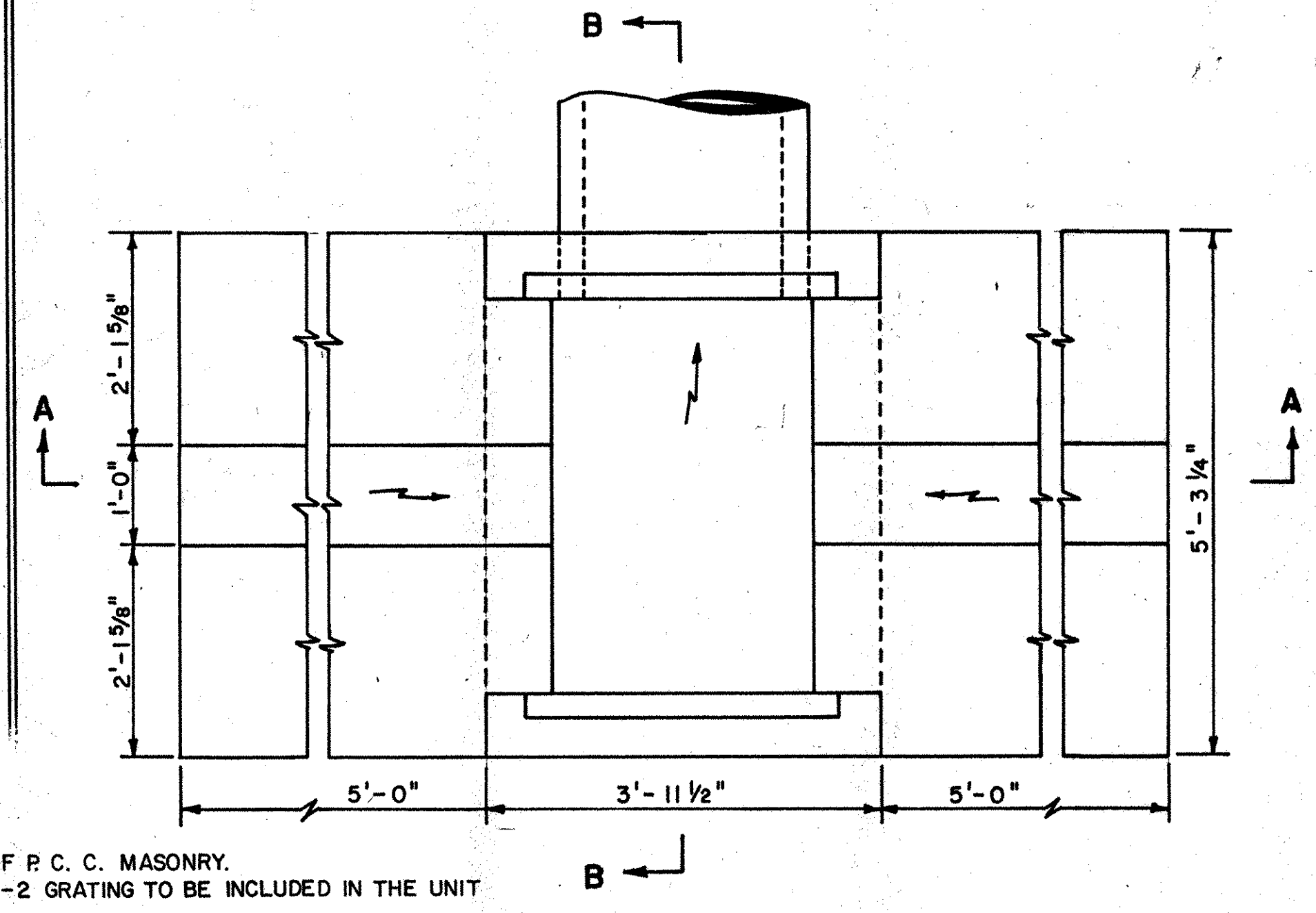
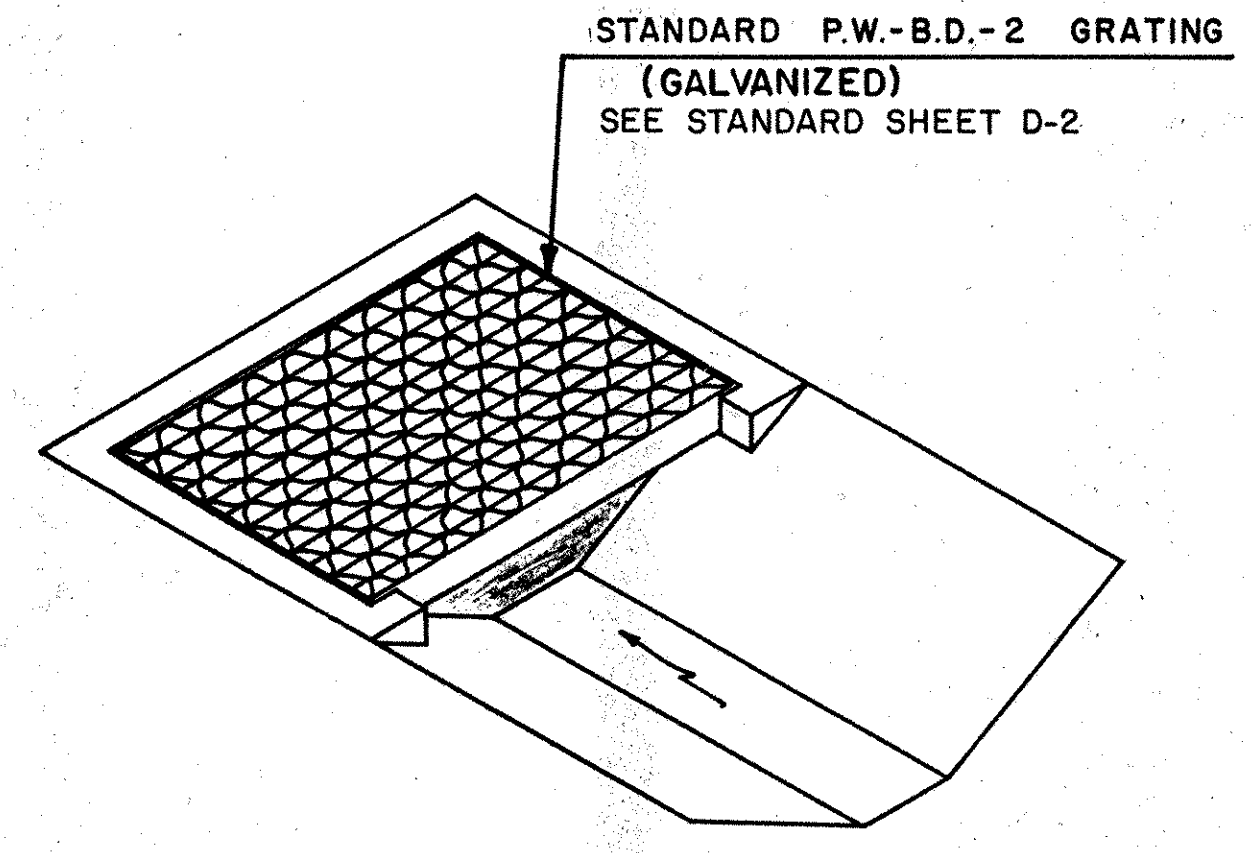


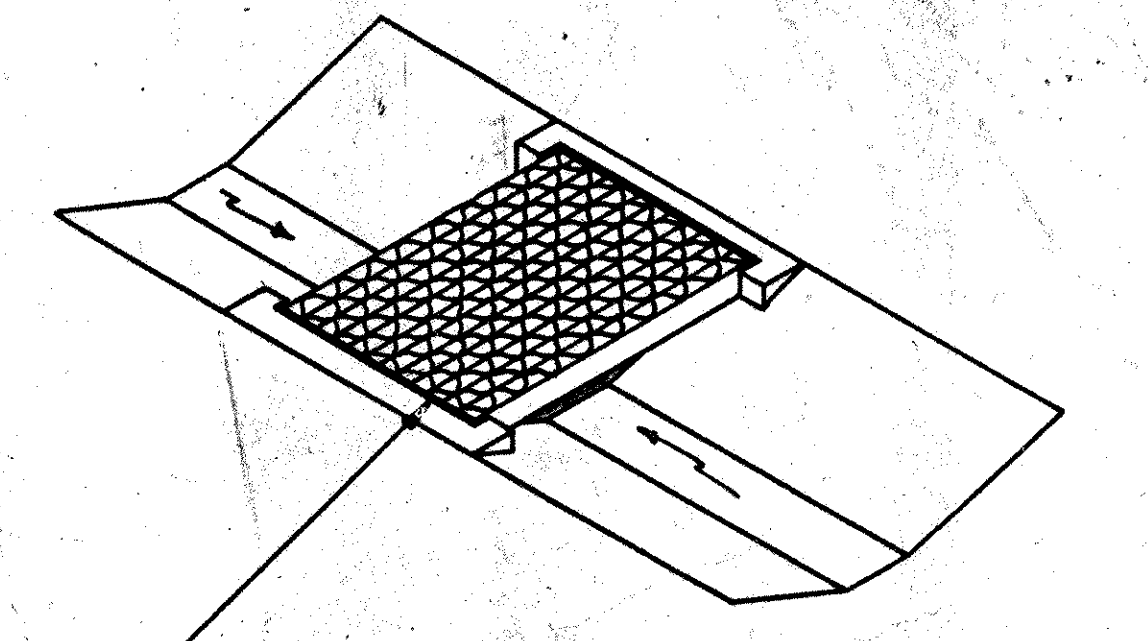
| COUNTY | CONTRACT | P. R. A. REG. NO. | STATE | FED. AID PROJECT NO. | SHEET NO. | TOTAL SHEETS |
|-----------------------------------------------------------|----------|-------------------|-------|----------------------|-----------|--------------|
| | | 2 | DEL. | | | |
| STANDARD SHEET D-3-4 | | | | | | |
| P.W.-B.D.-2 MOD. CATCH BASINS 1 & 2 | | | | | | |
| PREL. TRACING J.T.B. | | DESIGN E.L.W. | | CHKD. Y.N.C. | | |
| 1. 10/25/74, NOTE REFERRING TO STANDARD SHEET D-2, R.T.C. | | | | | | |
| 2. REMOVED CUT-OFF WALL NOTE 5/11/76 | | | | | | |
| 3. ADDED PRECAST NOTES 1-31-77 R.F.R. | | | | | | |
| 4. REVISED AND ADDED NOTES 1-30-81 R.F.R. | | | | | | |
| APPROVED <i>[Signature]</i> | | | | | 6-22-70 | DATE |
| DIRECTOR OF OPERATIONS | | | | | | |
| <i>[Signature]</i> | | | | | 6/22/70 | DATE |
| DEPUTY DIRECTOR-CHIEF ENGINEER | | | | | | |



PLAN

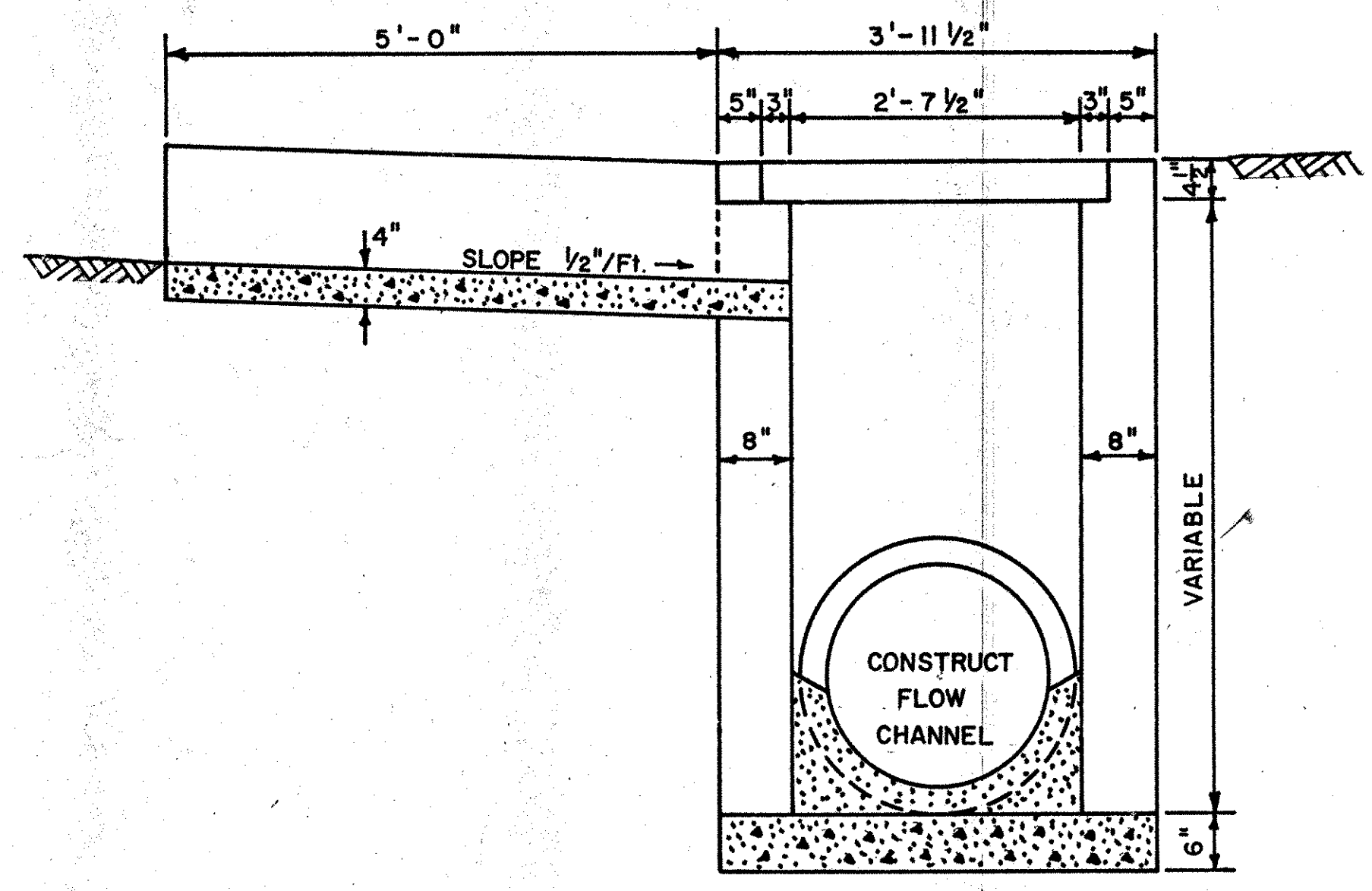


PLAN

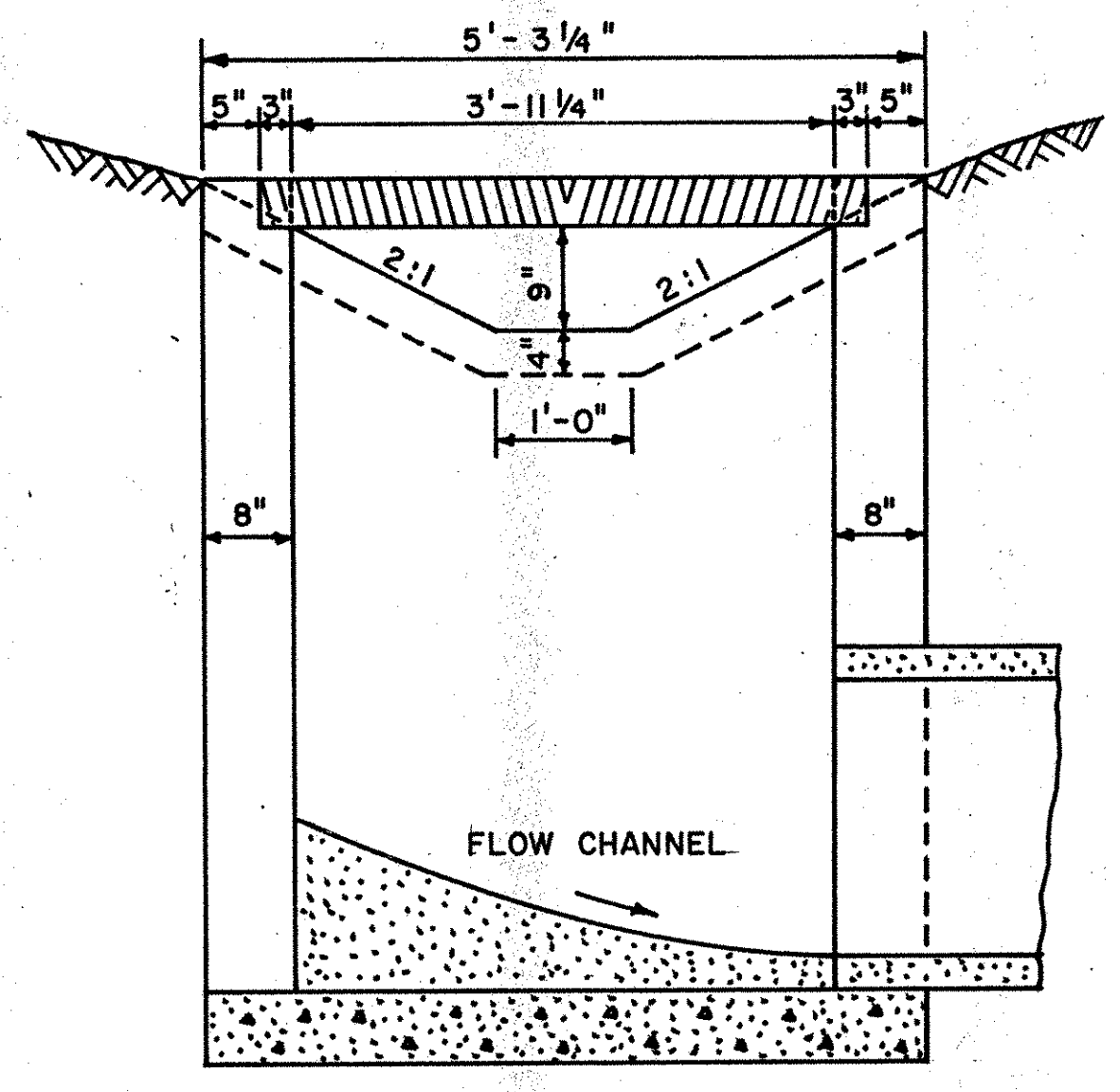


GENERAL NOTES:

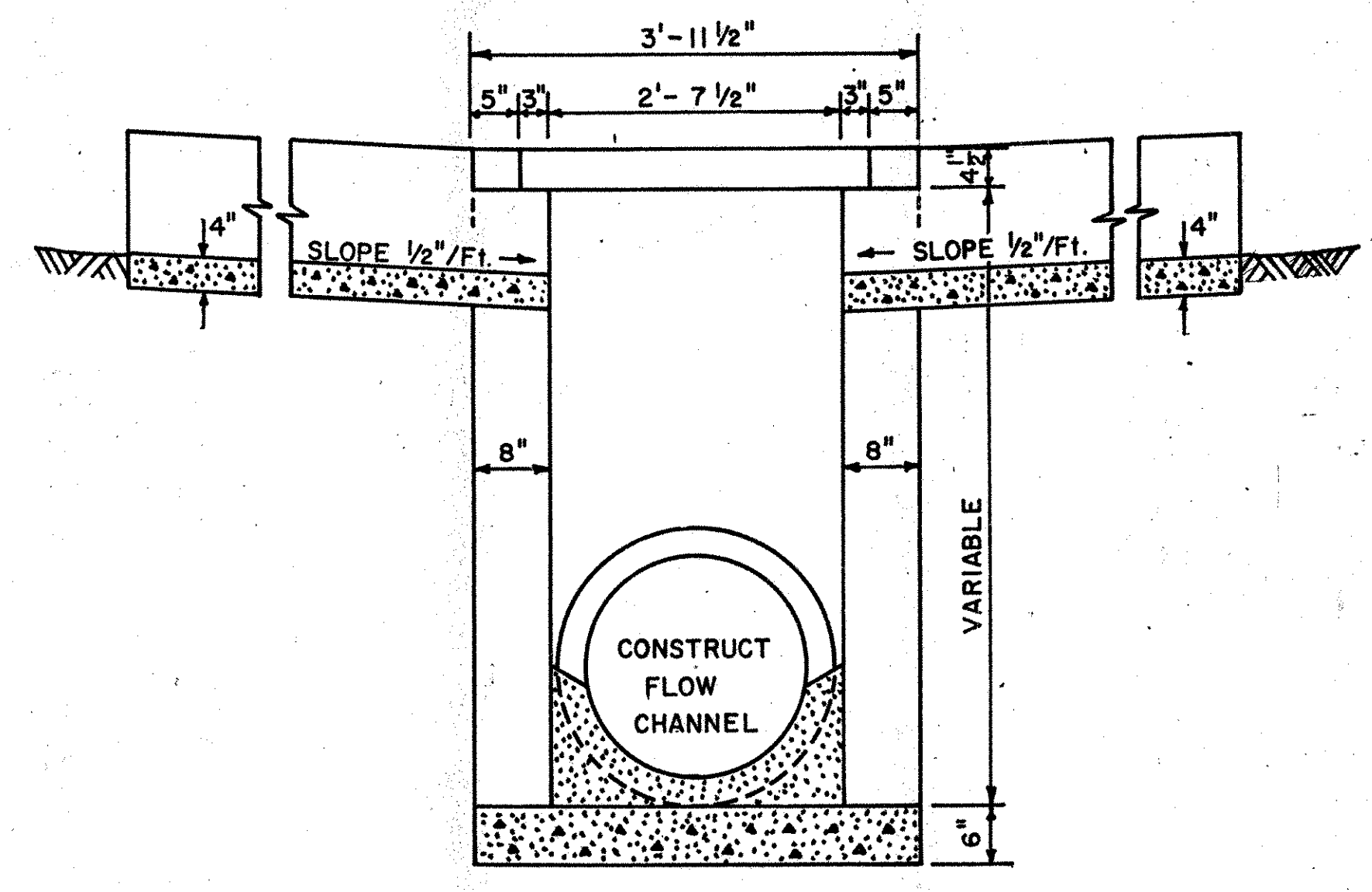
1. TOP 12" OF THE CATCH BASIN TO BE OF P. C. C. MASONRY.
2. COST OF P. C. C. GUTTER AND P.W.-B.D.-2 GRATING TO BE INCLUDED IN THE UNIT PRICE BID FOR CATCH BASIN.
3. P.W.-B.D.-2 MODIFIED CATCH BASINS 1 & 2 TO BE USED ONLY 30' OR MORE FROM EDGE OF NEAREST RUNNING LANE.
4. STEPS ARE TO BE PLACED IN ALL CATCH BASINS AND MANHOLES OVER 4' DEEP. SEE STANDARD SHEET D-1. COST STEP TO BE INCLUDED IN COST OF CATCH BASIN.
5. TARGET BRICK OR BLOCK MASONRY WITH 1/2" OF PORTLAND CEMENT MORTAR.
6. CATCH BASINS MAY BE PRECAST. CONTRACTOR SHALL SUBMIT DETAILED PLANS SHOWING SECTIONS, JOINTS, REINFORCEMENT AND OTHER PERTINENT INFORMATION FOR APPROVAL.



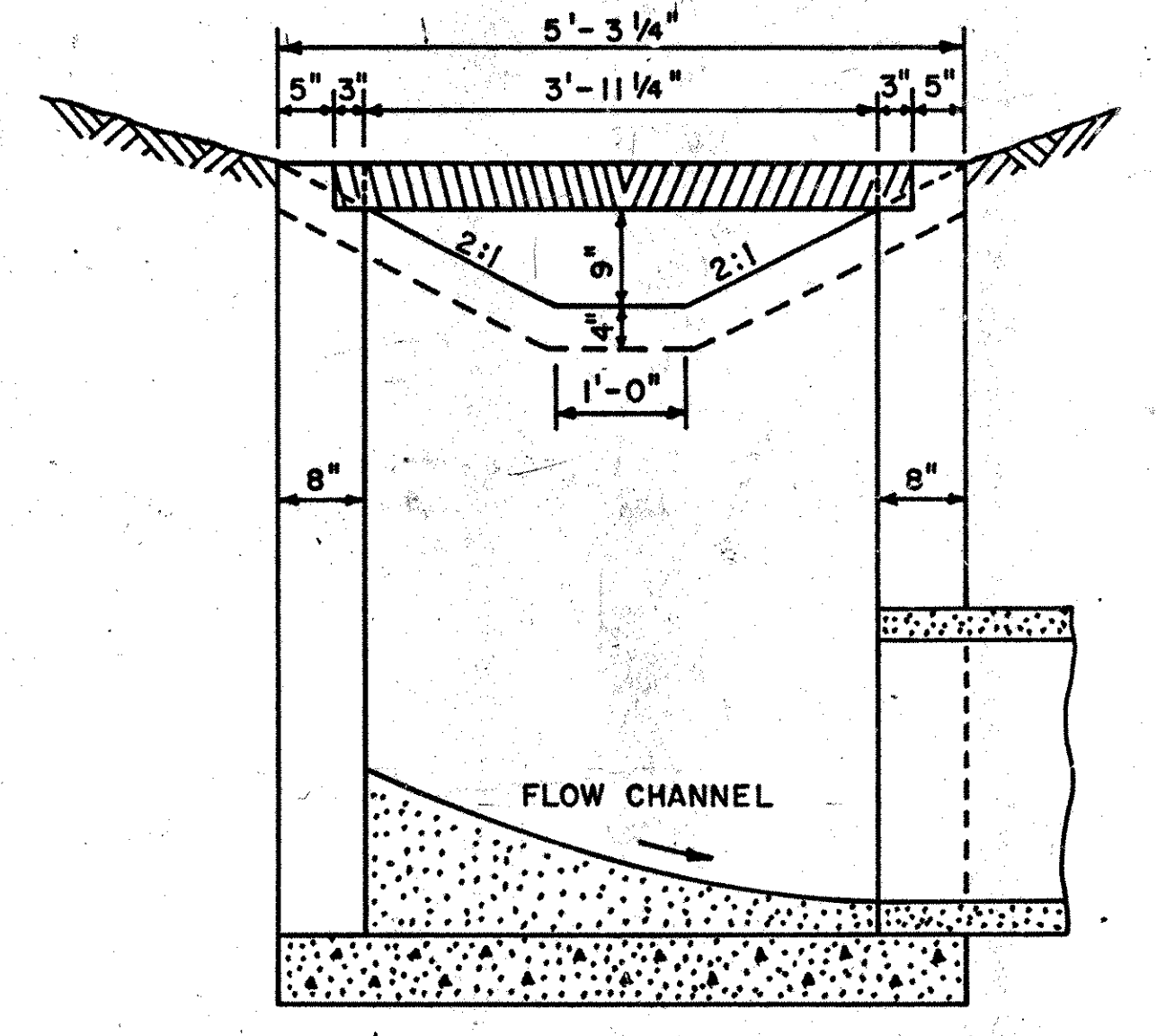
SECTION A-A



SECTION B-B

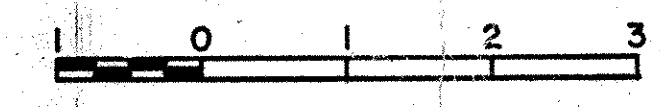


SECTION A-A



SECTION B-B

P.W.-B.D.-2 MODIFIED #1 CATCH BASIN



P.W.-B.D.-2 MODIFIED #2 CATCH BASIN

