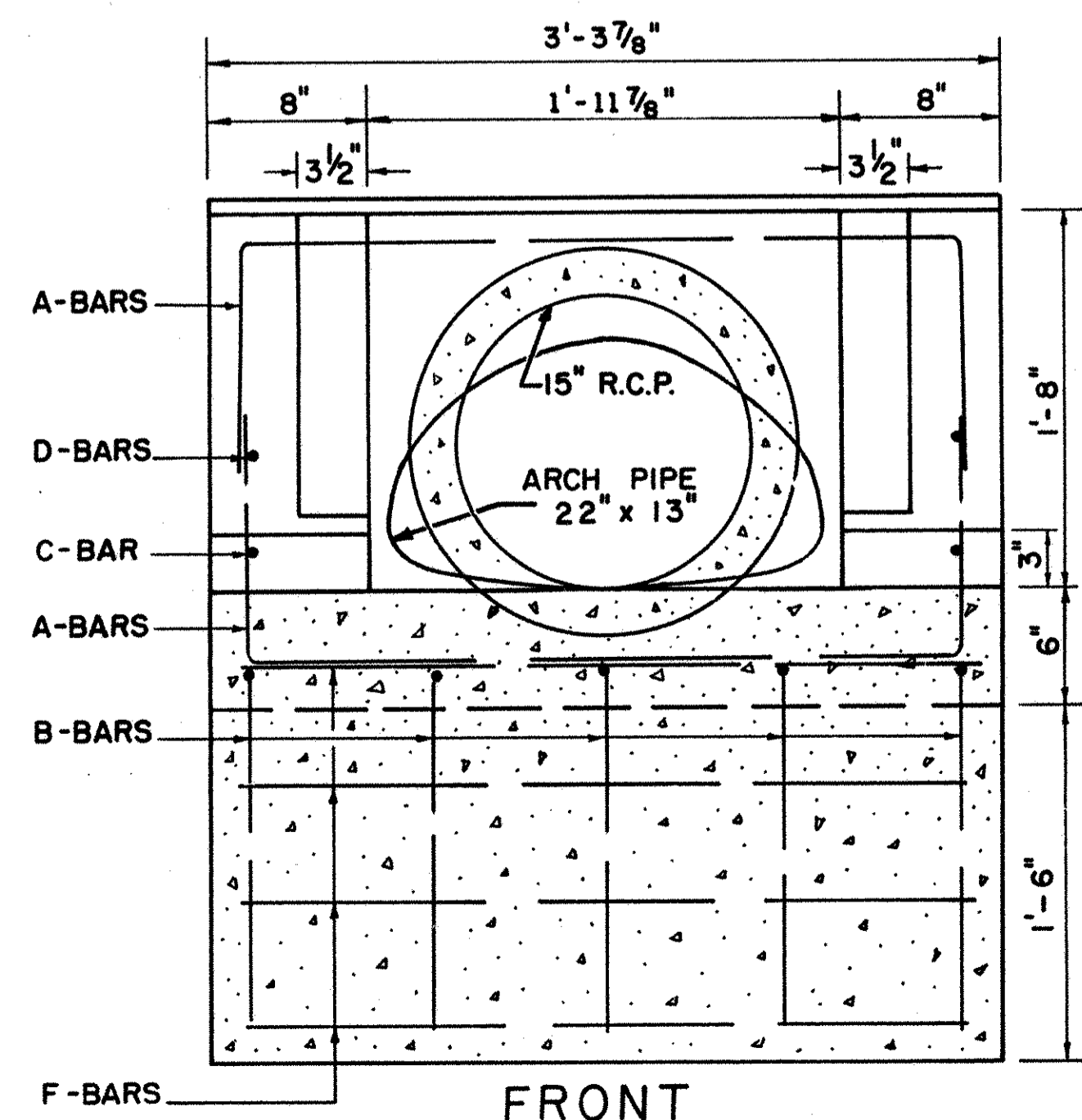
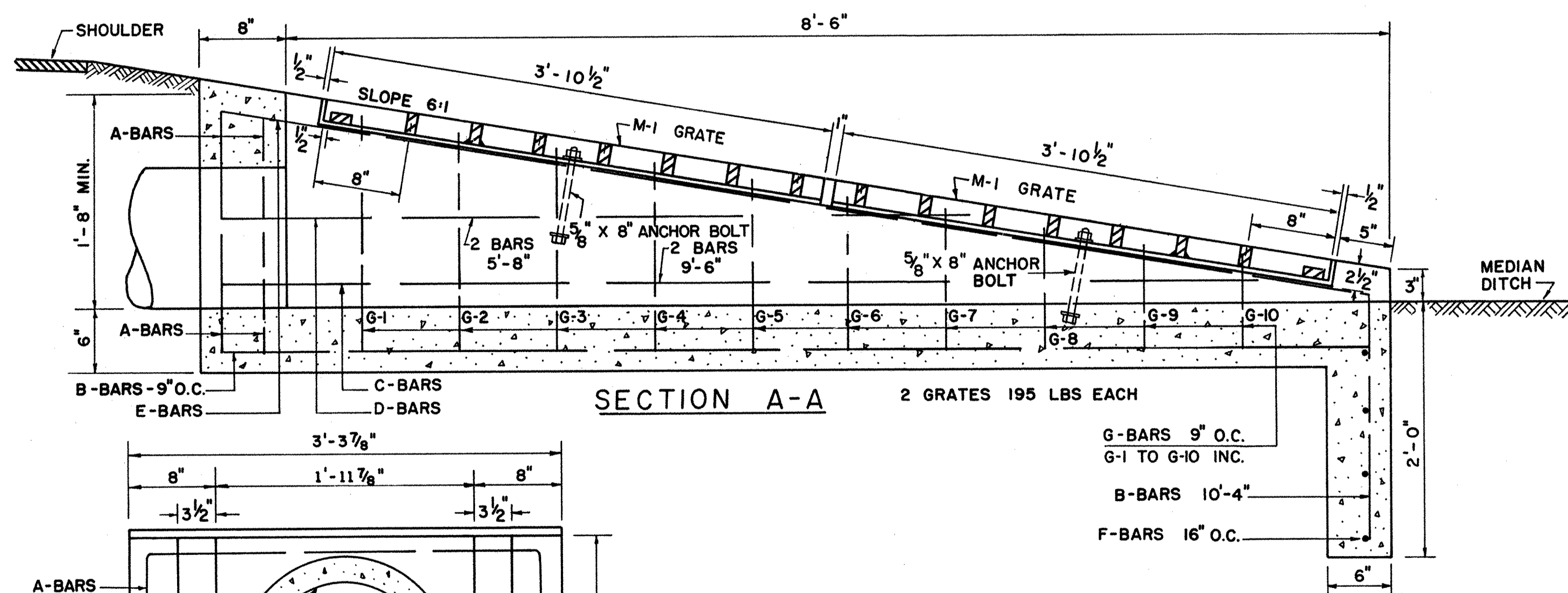


TABLE OF REINFORCEMENT			
REINFORCEMENT	QTY.	LENGTH	TOTAL LENGTH
A - BARS 3'-0" x 1'-3"	4	5'-6"	22'-0"
G-1 BAR 3'-0" x 1'-10"	1	6'-8"	6'-8"
G-2 BAR 3'-0" x 1'-8"	1	6'-4"	6'-4"
G-3 BAR 3'-0" x 1'-7"	1	6'-2"	6'-2"
G-4 BAR 3'-0" x 1'-5"	1	5'-10"	5'-10"
G-5 BAR 3'-0" x 1'-4"	1	5'-8"	5'-8"
G-6 BAR 3'-0" x 1'-2"	1	5'-4"	5'-4"
G-7 BAR 3'-0" x 1'-1"	1	5'-2"	5'-2"
G-8 BAR 3'-0" x 0'-11"	1	4'-10"	4'-10"
G-9 BAR 3'-0" x 0'-10"	1	4'-8"	4'-8"
G-10 BAR 3'-0" x 0'-8"	1	4'-4"	4'-4"
B - BARS 8'-10" x 1'-6"	5	10'-4"	51'-8"
C - BARS 8'-11" x 0'-9"	2	9'-8"	19'-4"
D - BARS STRAIGHT	2	5'-8"	11'-4"
E - BARS STRAIGHT	2	8'-10"	17'-8"
F - BARS STRAIGHT	4	3'-1"	12'-4"

NOTE:
 SAFETY END STRUCTURES TO BE USED AT EACH END OF CROSSOVER DRAINS.
 END STRUCTURE SHALL BE PAID FOR AT A UNIT PRICE BID EACH IN PLACE, INCLUDING M-1 GRATES AND REINFORCING STEEL.
 THE MINIMUM SLOPE FOR PIPE UNDER CROSSOVERS SHALL BE 0.003.
 SEE STANDARD SHEET D-4 FOR M-1 GRATE.



SAFETY END STRUCTURE

* TOTAL LENGTH 189' 1/2" Ø BARS
 TOTAL WEIGHT 130 LBS
 ALL REINFORCING BARS TO BE 1/2" Ø
 * REINFORCING BAR LIST GIVEN FOR ESTIMATING PURPOSES ONLY. COST TO BE INCLUDED IN UNIT PRICE BID FOR STRUCTURE.