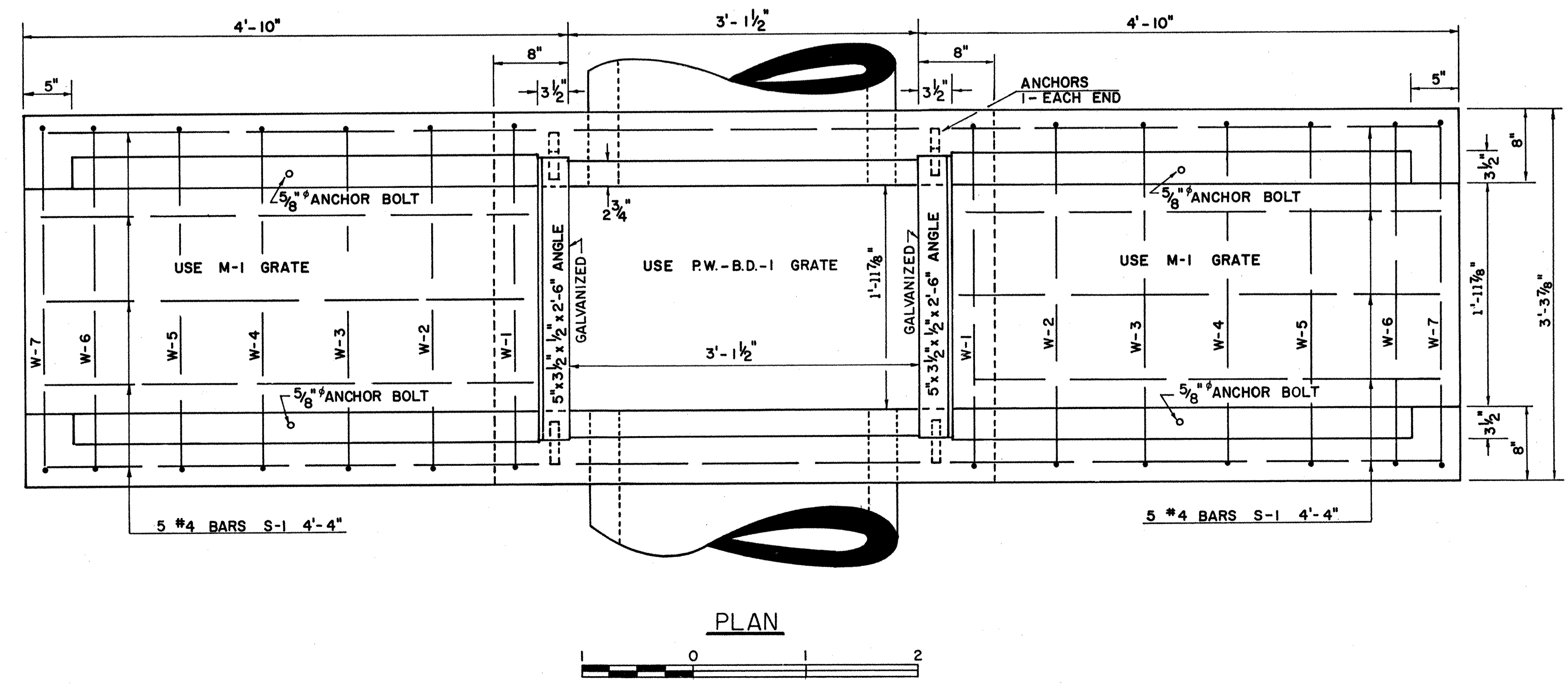
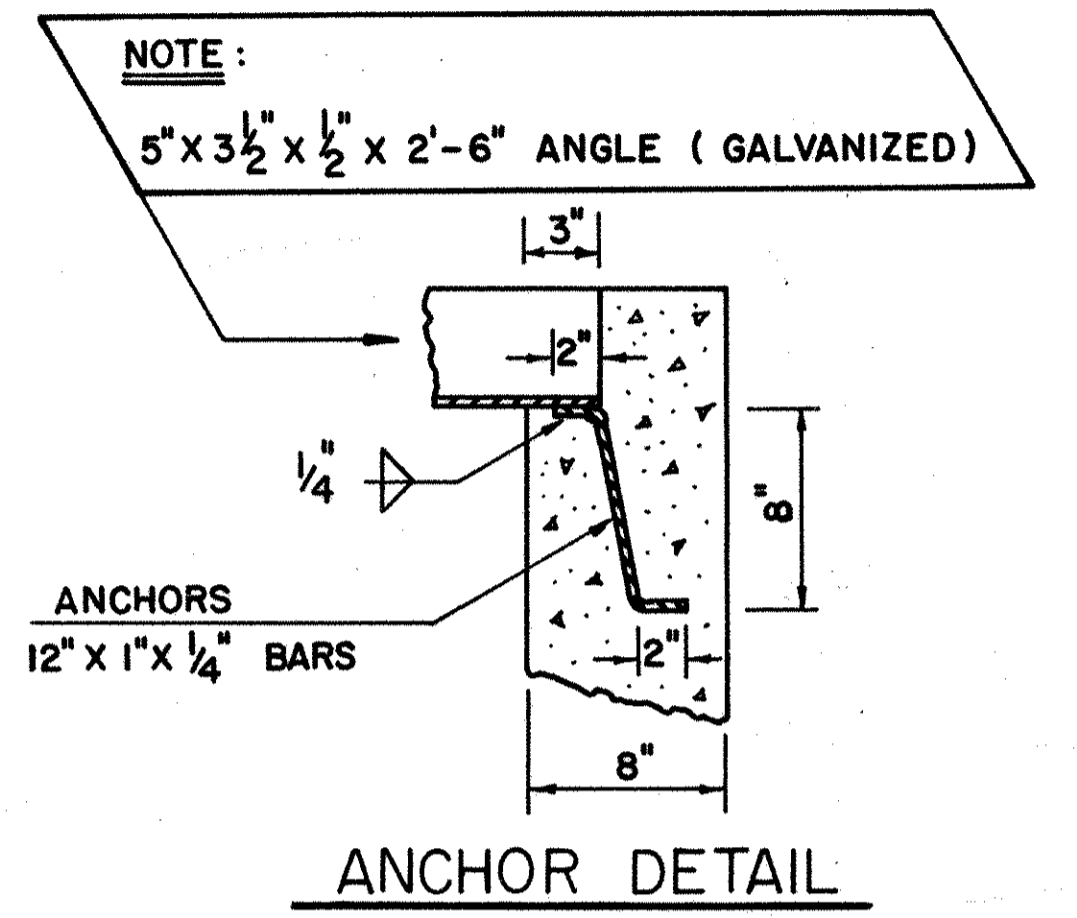


SECTION A-A

M.D. & M.S. CATCH BASINS

**NOTE:**  
 CATCH BASINS M.D. & M.S. SHALL BE PAID FOR AT UNIT PRICE EACH COMPLETE IN PLACE INCLUDING M-1 GRATE, AND REINFORCING STEEL.  
 REINFORCING STEEL #111 FOR M.D. & #53 FOR M.S WEIGHTS GIVEN FOR ESTIMATING PURPOSES ONLY.  
 CATCH BASINS MAY BE PRECAST. CONTRACTOR SHALL SUBMIT DETAILED PLANS SHOWING SECTIONS, JOINTS, REINFORCEMENT AND OTHER PERTINENT INFORMATION FOR APPROVAL.  
 SEE STANDARD SHEET D-2 FOR PW-BD-1 GRATE  
 STEPS ARE TO BE PLACED IN ALL CATCH BASINS AND MANHOLES OVER 4' DEEP. SEE STANDARD SHEET D-1. COST OF STEPS TO BE INCLUDED IN COST OF CATCH BASIN.



PLAN

BAR SCHEDULE			
STRAIGHT BARS - SIZE 4 <sup>Ø</sup>			
NO.	MARK	LENGTH	TOTAL LENGTH
10	S-1	4'-4"	43'-4"
2	W-11	6'-0"	12'-0" *
4	W-10	4'-4"	17'-4"
2	W-9	8'-2"	16'-4" *
4	W-8	2'-0"	8'-0"
* BEND THESE BARS IN FIELD			
BAR SCHEDULE			
BENT BARS - SIZE 4 <sup>Ø</sup>			
MARK	BEND	TOTAL LENGTH	
W-7	0'-7"	4'-2"	
W-6	0'-8"	4'-4"	
W-5	0'-10"	4'-8"	
W-4	0'-11"	4'-10"	
W-3	1'-1"	5'-2"	
W-2	1'-3"	5'-6"	
W-1	1'-4"	5'-8"	
VARIABLE			
VARIABLE			
W-1	1'-4"	5'-8"	
W-2	1'-3"	5'-6"	
W-3	1'-1"	5'-2"	
W-4	0'-11"	4'-10"	
W-5	0'-10"	4'-8"	
W-6	0'-8"	4'-4"	
W-7	0'-7"	4'-2"	
M-D #111	M-S #52		