

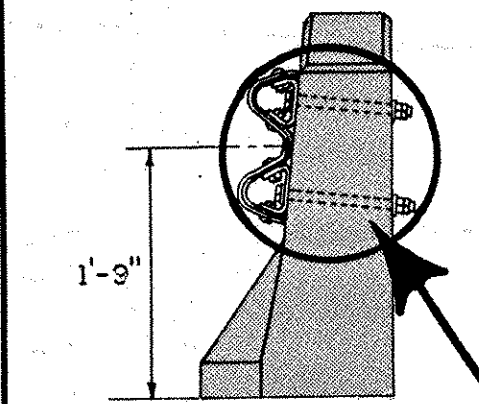
GUARDRAIL TO BARRIER CONNECTION DETAILS

PREL. TRACING R.F.R.	7-29-76	DESIGN R.T.C.	CHKD. R.T.C.
RECOMMENDED	8/6	1976	R. E. Jansetti CHIEF ENGINEER
APPROVED	8/9	1976	R. J. Fisher DIRECTOR OF HIGHWAYS
REVISIONS (1) 6/30/78 Revised connection and nomenclature R.F.R.			

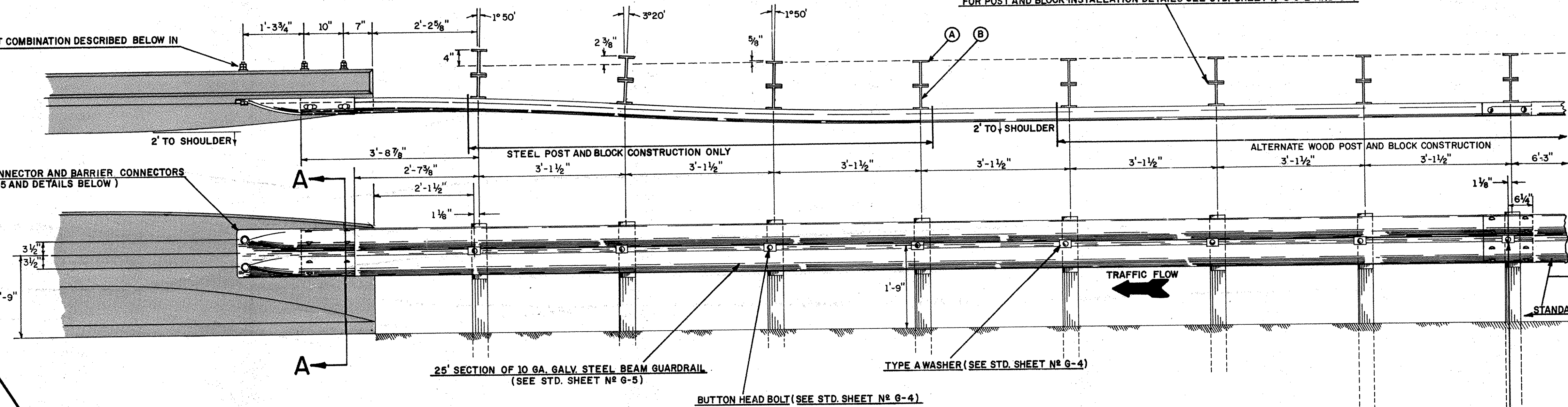
FOR POST AND BLOCK INSTALLATION DETAILS SEE STD. SHEET NOS G-2 AND G-4

7/8 BOLT, WASHER AND NUT COMBINATION DESCRIBED BELOW IN
DETAIL OF SECTION A-A

COMBINATION TERMINAL CONNECTOR AND BARRIER CONNECTORS
(SEE STD. SHEET NO G-5 AND DETAILS BELOW)



SECTION A-A



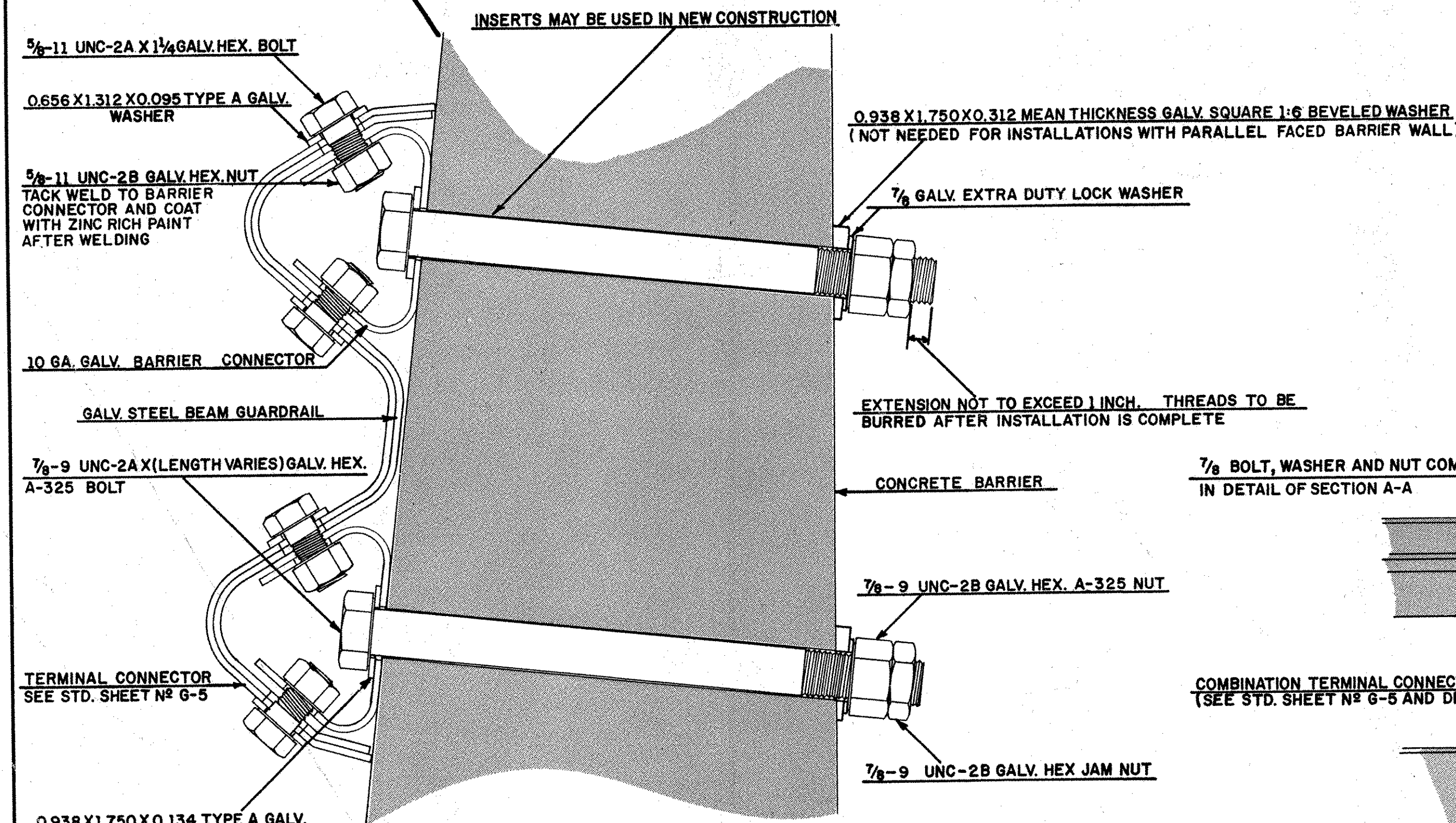
GUARDRAIL TO BARRIER CONNECTION, APPROACH TYPE

LIMIT OF PAYMENT FOR GUARDRAIL TO BARRIER CONNECTION
APPROACH TYPE

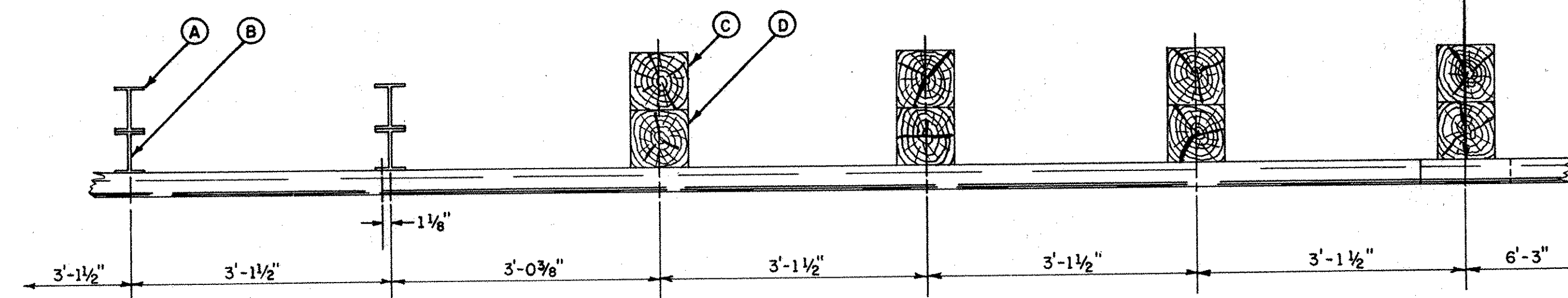
- (A) W6 X 9 GALV. STEEL POST-SEE STD. SHEET G-4 FOR SPECIFICATIONS
- (B) W6 X 9 GALV. STEEL BLOCK-SEE STD. SHEET G-4 FOR SPECIFICATIONS
- (C) 8" X 8" CREOSOTED WOOD POST-SEE STD. SHEET G-4 FOR SPECIFICATIONS
- (D) 8" X 8" CREOSOTED WOOD BLOCK-SEE STD. SHEET G-4 FOR SPECIFICATIONS

GENERAL NOTES

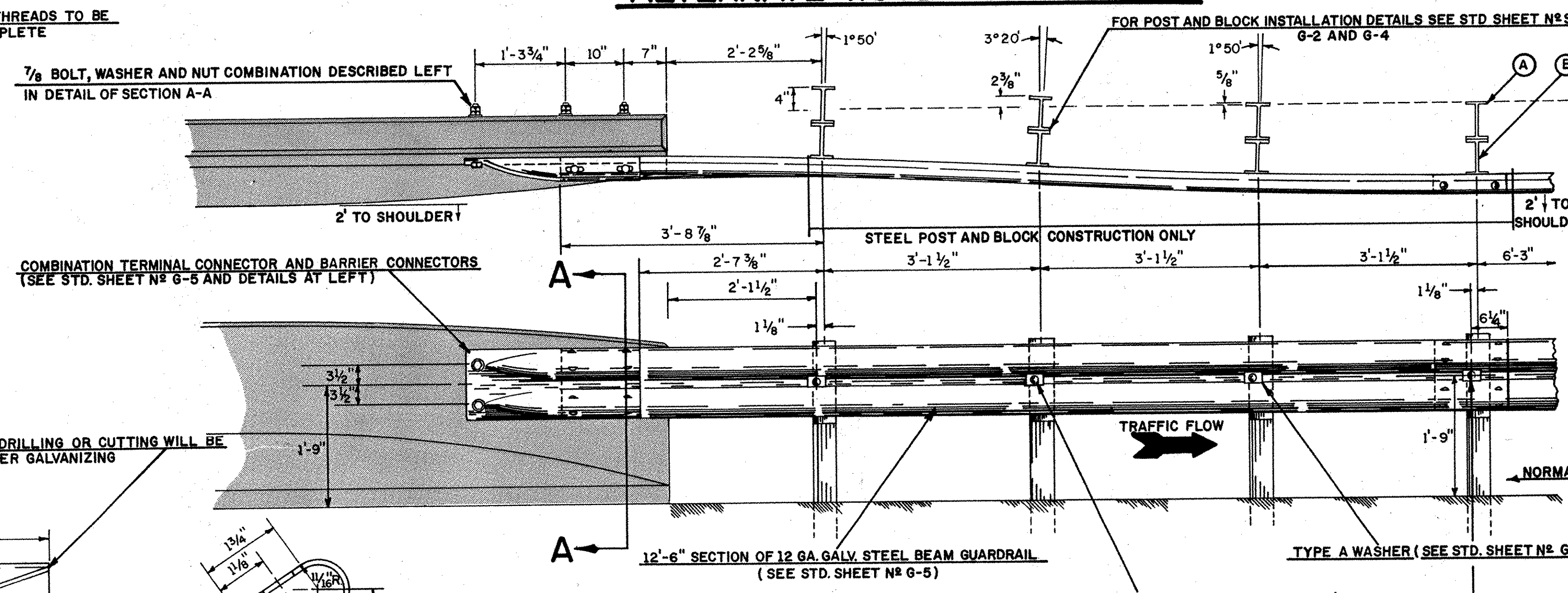
1. THE GUARDRAIL TO BARRIER CONNECTION, APPROACH TYPE, SHALL BE USED AT EACH END OF BARRIERS ON UNDIVIDED ROADS AND AT THE TRAFFIC APPROACH END OF BARRIERS ON DIVIDED ROADS.
2. THE GUARDRAIL TO BARRIER CONNECTION, EXIT TYPE, SHALL BE USED ON THE TRAFFIC EXIT END ONLY OF BARRIERS ON DIVIDED ROADS.
3. THIS SHEET SHALL ALSO APPLY WHERE GUARDRAIL IS TO BE CONNECTED TO THE VERTICAL FACE OF EXISTING BARRIERS.
4. SEE STANDARD SHEET NUMBER G-4 FOR ALTERNATE 6"-C-STRONG POST.
5. 1" DIAMETER BOLT HOLES SHALL BE DRILLED THROUGH BARRIER ONLY AFTER CONCRETE IS COMPLETELY CURED. AVOID CUTTING OR BREAKING OF BAR REINFORCEMENT. USE 1" I. D. THINWALL GALVANIZED SLEEVE FOR PRE-FORMED HOLE ALTERNATE.



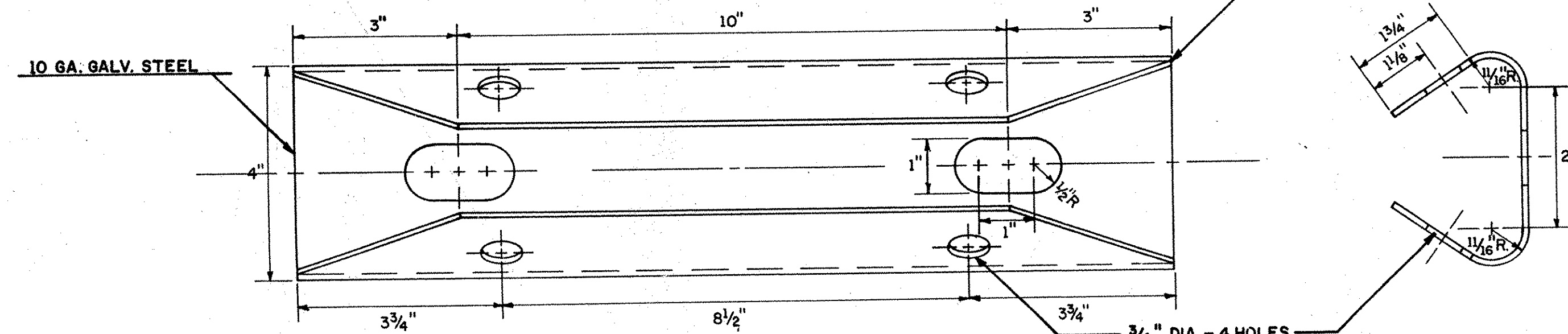
DETAIL OF SECTION A-A



ALTERNATE WOOD POST METHOD



GUARDRAIL TO BARRIER CONNECTION, EXIT TYPE



BARRIER CONNECTOR