

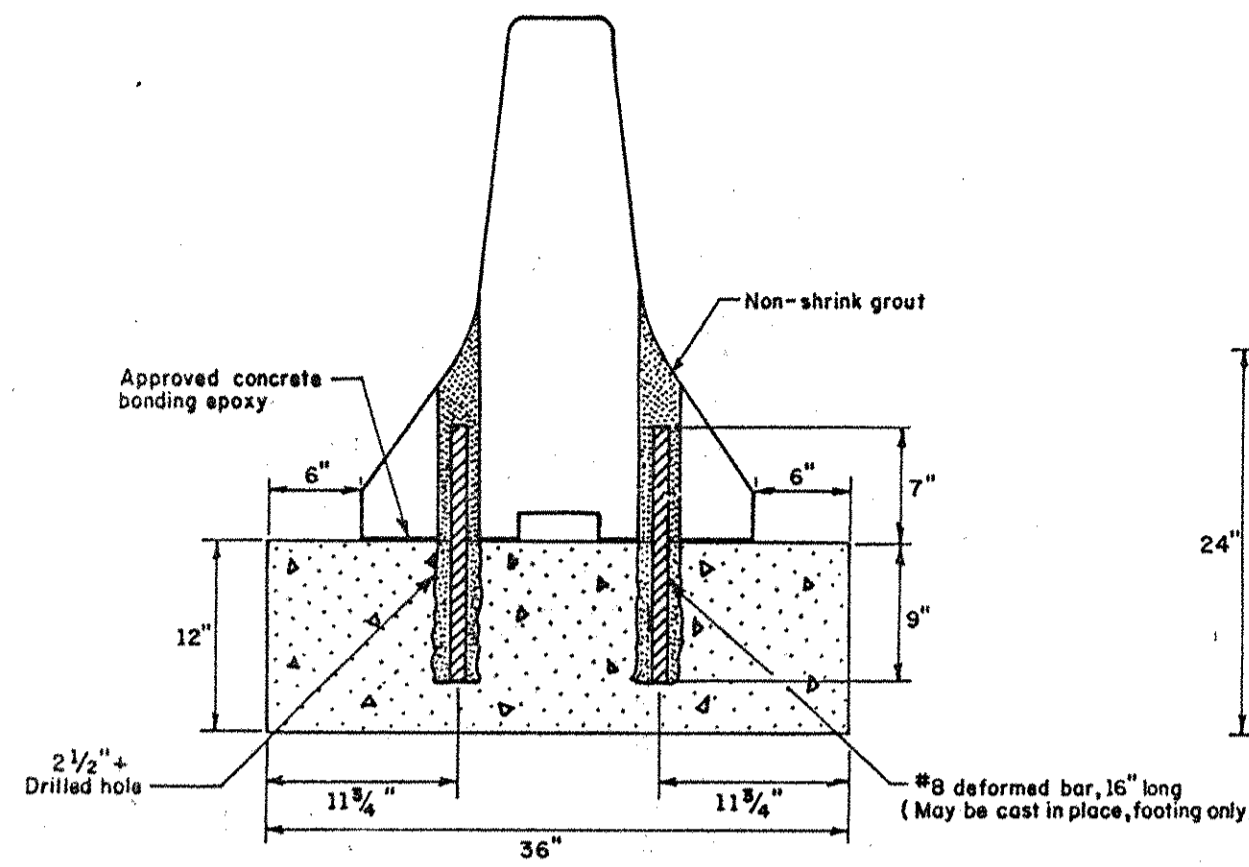
PORTABLE PORTLAND CEMENT CONCRETE SAFETY BARRIER

PREL. TRACING R.F.R. 12-14-76 DESIGN R.T.C. CHKD.

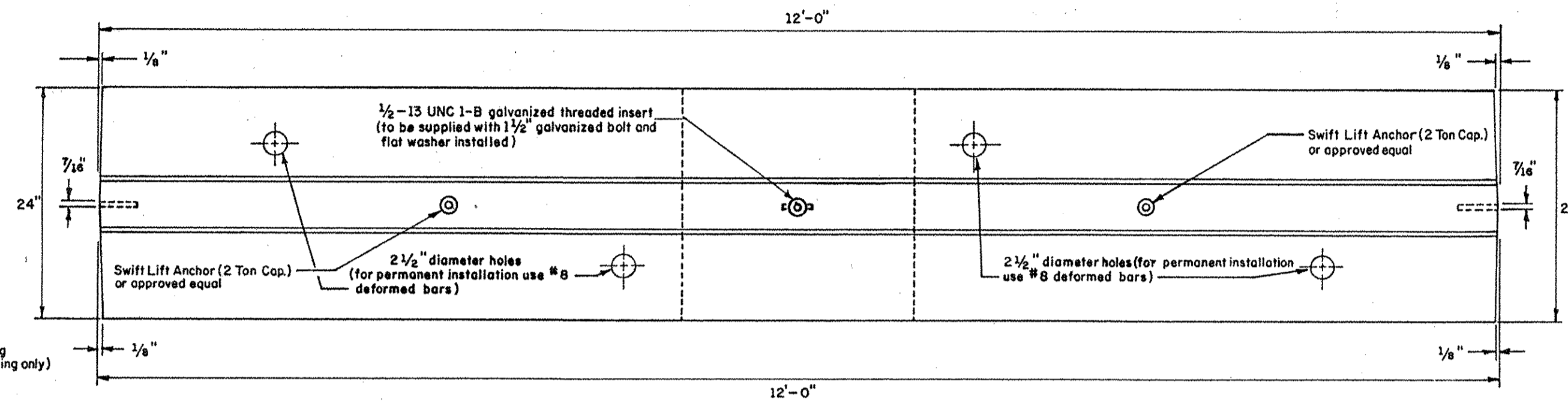
RECOMMENDED 10/11 1977 *R. E. Jurek* CIVIL ENGINEER

APPROVED 10/13 1977 *R. D. Brown* ACTING DIRECTOR OF HIGHWAYS

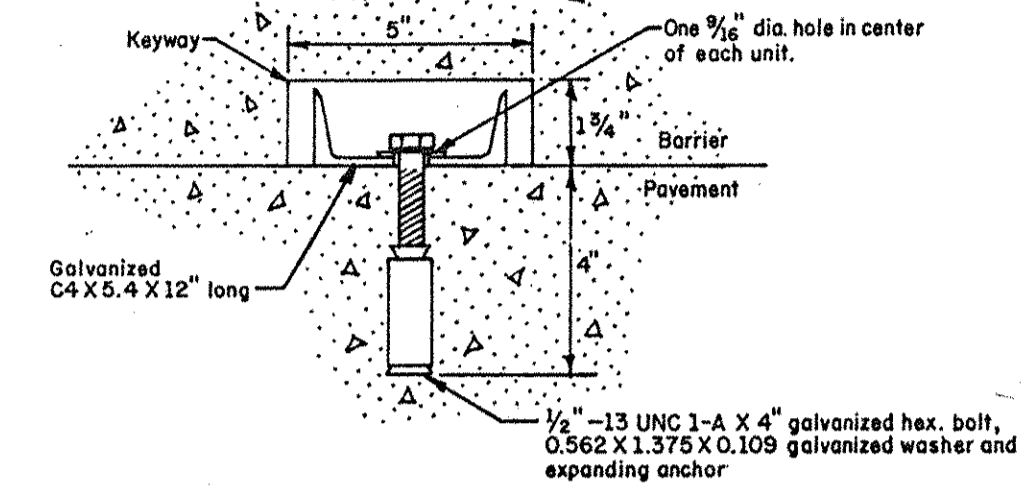
REVISIONS



P.C.C. SAFETY BARRIER FOOTING
(For permanent installation only)



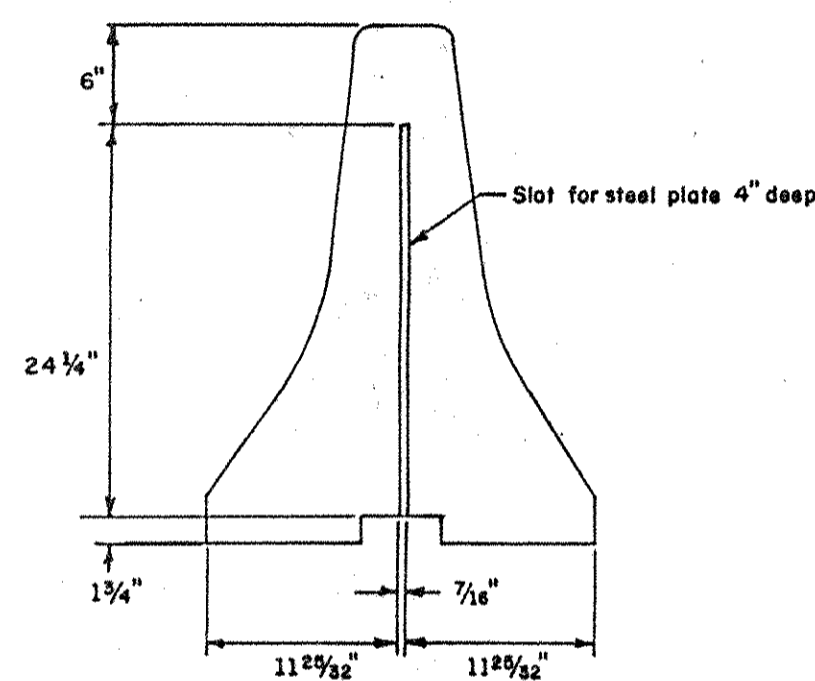
TOP VIEW



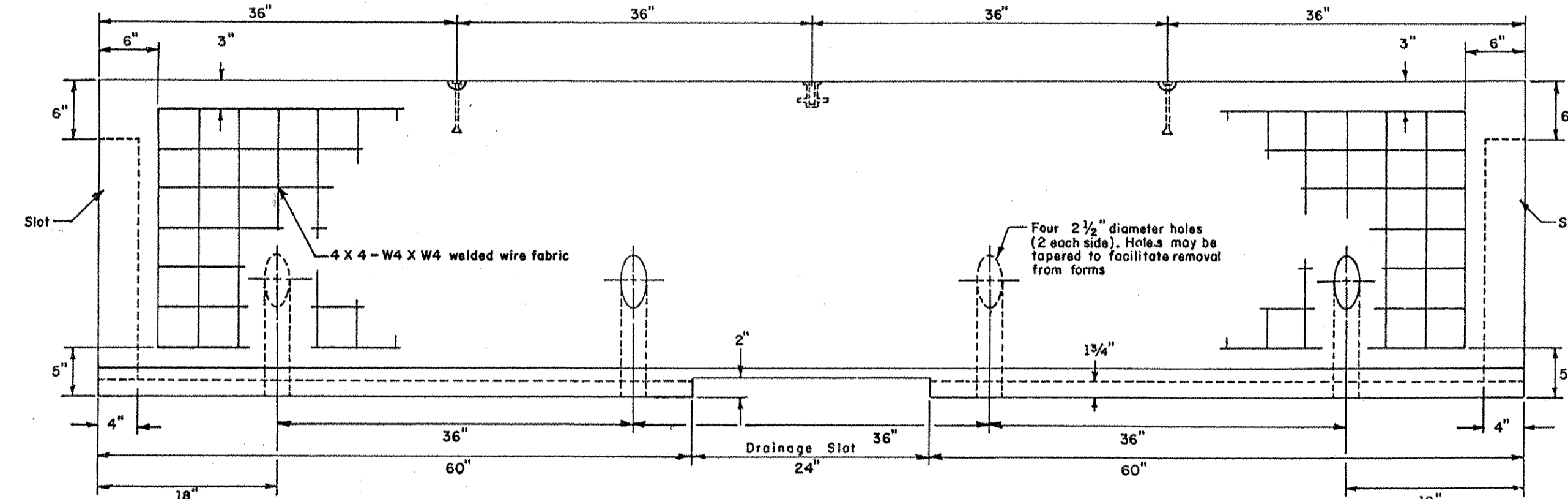
TEMPORARY INSTALLATION
ON BRIDGE DECKS

Two channel sections shall be used for each barrier section. The bolt shall be placed 2'-0" from end of barrier, except as required to clear bridge expansion joints.

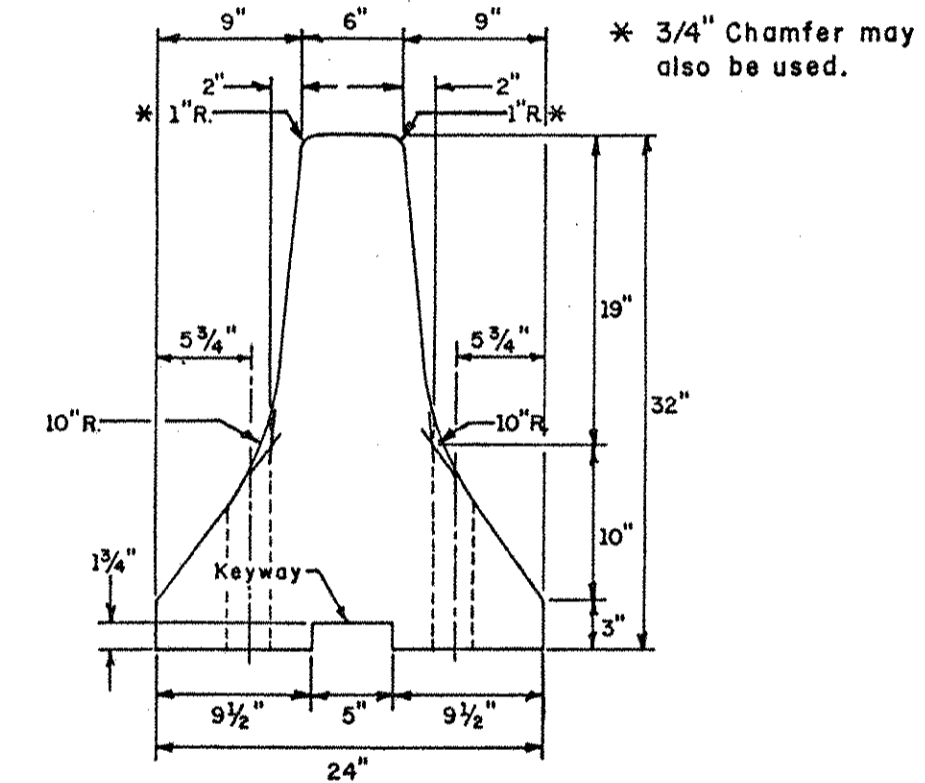
Hole is to be filled with non-shrink grout immediately upon removal of temporary barrier.



SLOT DIMENSIONS



PORTABLE PORTLAND CEMENT CONCRETE SAFETY BARRIER

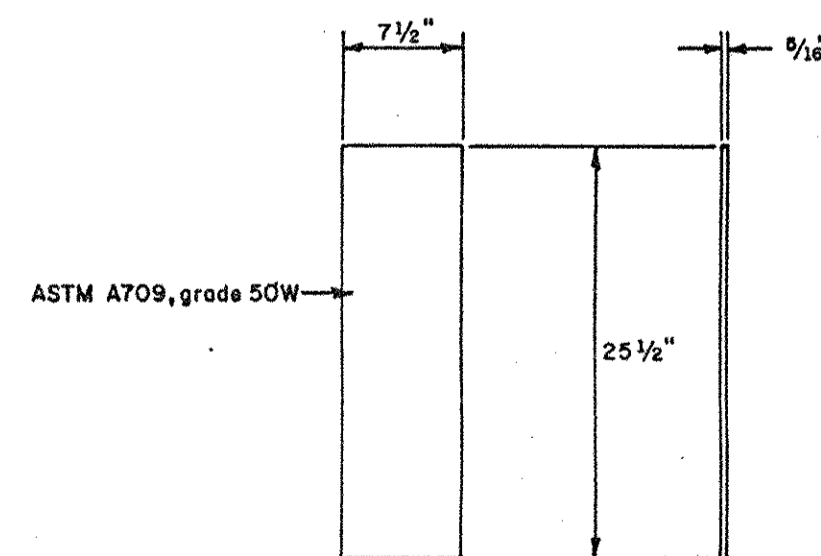


CROSS SECTION

LIFTING DEVICES SHALL BE SWIFT LIFT ANCHORS, (2 TON CAPACITY) AS MANUFACTURED BY SUPERIOR CONCRETE ACCESSORIES, INC. OR APPROVED EQUAL.

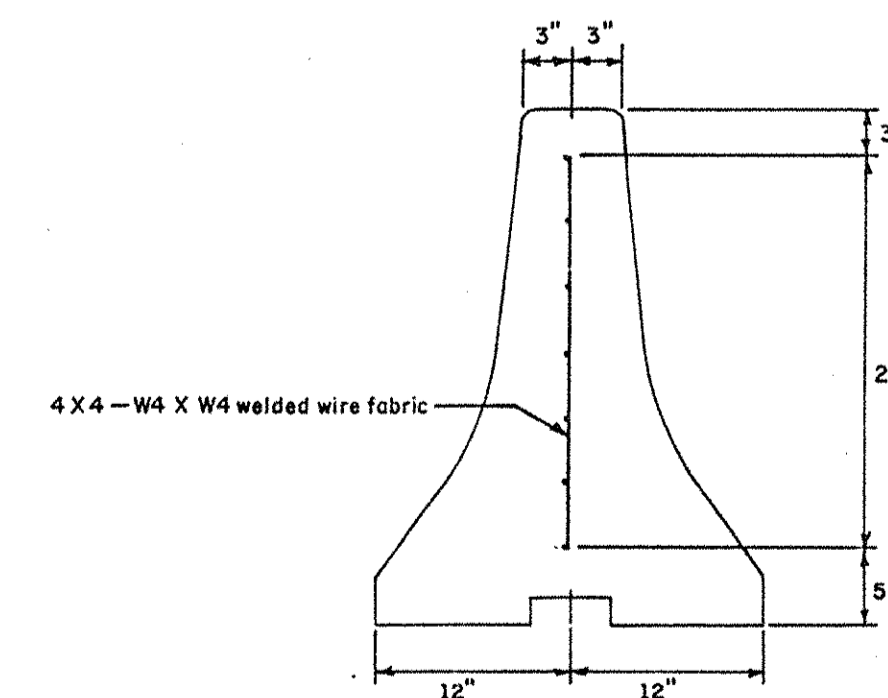
PORTLAND CEMENT CONCRETE MASONRY SHALL CONFORM TO SECTION 812, PORTLAND CEMENT CONCRETE, CLASS A (28 DAY STRENGTH 4000 P.S.I.).

THE PORTABLE PORTLAND CEMENT CONCRETE SAFETY BARRIER SHALL NOT BE USED AS A PERMANENT BARRIER ON BRIDGES.



One steel plate shall be supplied with each safety barrier

STEEL CONNECTOR PLATE



WIRE MESH LOCATION