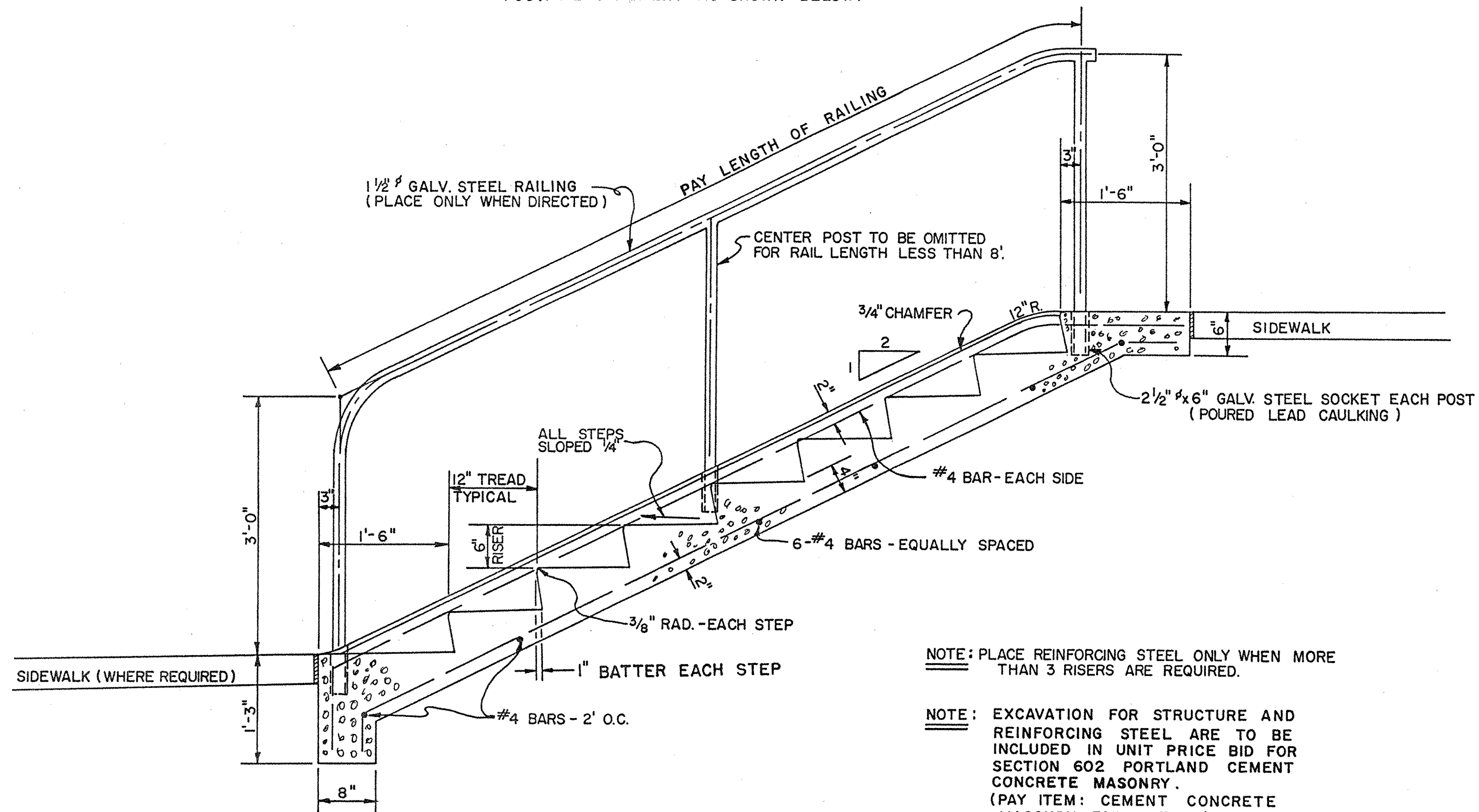


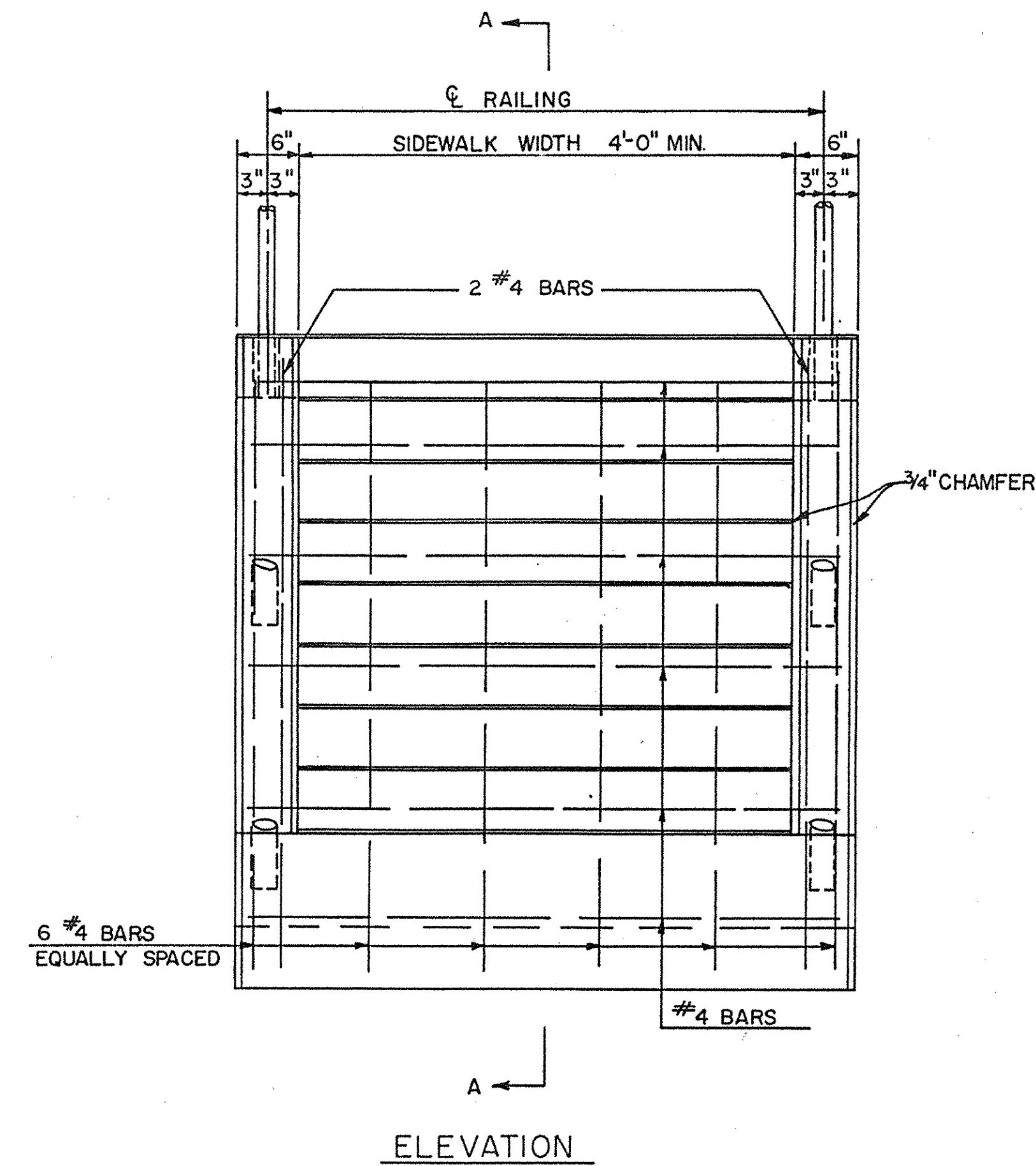
NOTE:
 GALVANIZED STEEL RAILING TO BE PAID
 FOR AT UNIT PRICE BID PER LINEAR
 FOOT. MEASUREMENT AS SHOWN BELOW.



SECTION A-A

NOTE: PLACE REINFORCING STEEL ONLY WHEN MORE THAN 3 RISERS ARE REQUIRED.

NOTE: EXCAVATION FOR STRUCTURE AND REINFORCING STEEL ARE TO BE INCLUDED IN UNIT PRICE BID FOR SECTION 602 PORTLAND CEMENT CONCRETE MASONRY. (PAY ITEM: CEMENT CONCRETE MASONRY FOR STEPS.)



ELEVATION

PORT. CEM. CONC. STEPS



ESTIMATED QUANTITIES — PORT. CEM. CONC. STEPS									
No. OF RISERS	RAILING LENGTH L.F.	SIDEWALK WIDTH 4'		SIDEWALK WIDTH 5'		SIDEWALK WIDTH 6'			
		P.C.C. MASONRY (C.Y.)	REINF. STEEL (#4 BARS) LENGTH WEIGHT (#)	P.C.C. MASONRY (C.Y.)	REINF. STEEL (#4 BARS) LENGTH WEIGHT (#)	P.C.C. MASONRY (C.Y.)	REINF. STEEL (#4 BARS) LENGTH WEIGHT (#)		
2	—	.6	—	.7	—	.8	—	—	—
3	—	.7	—	.8	—	1.0	—	—	—
4	10'-0"	.9	63'-0" 42.0	1.0	73'-2" 48.9	1.2	83'-4" 55.7		
5	12'-4"	1.0	76'-7" 51.2	1.1	89'-0" 59.5	1.3	101'-5" 67.7		
6	14'-6"	1.1	84'-4" 56.3	1.3	97'-10" 65.4	1.5	111'-4" 74.4		
7	16'-8"	1.2	97'-0" 65.0	1.4	112'-8" 75.3	1.7	128'-4" 85.7		
8	19'-0"	1.4	104'-2" 69.6	1.6	120'-10" 80.7	1.9	137'-6" 91.9		
9	21'-2"	1.5	118'-4" 79.0	1.7	137'-4" 91.7	2.0	156'-4" 104.4		
10	23'-4"	1.6	131'-0" 87.5	1.9	152'-2" 101.6	2.2	173'-4" 115.8		
11	25'-8"	1.8	138'-4" 92.4	2.1	160'-6" 107.2	2.4	182'-8" 122.0		
12	27'-10"	1.9	150'-7" 100.6	2.2	174'-10" 116.8	2.6	199'-1" 133.0		
13	30'-2"	2.0	160'-4" 107.1	2.4	186'-0" 124.2	2.8	211'-8" 141.4		
14	32'-4"	2.1	172'-9" 115.4	2.5	200'-6" 133.9	3.0	228'-3" 152.5		
15	34'-6"	2.3	179'-11" 120.2	2.7	208'-8" 139.4	3.1	237'-5" 158.6		
16	36'-10"	2.4	192'-4" 128.4	2.8	223'-2" 149.1	3.3	254'-0" 169.7		

COUNTY	CONTRACT	P. R. A. RES. NO.	STATE	FED. AID PROJECT NO.	SHEET NO.	TOTAL SHEETS
	2	DEL.				
STANDARD SHEET M-2						
PORTLAND CEMENT CONCRETE STEPS						
PREL. TRACING H.R.C. DESIGN J.E.R. CHKD. E.L.W.						
REVISIONS						
CHANGED GALV. IRON RAILING TO GALV. STEEL RAILING. 1-16-73 J.T.B.						
APPROVED <i>[Signature]</i> 6-22-70 DATE						
DIRECTOR OF OPERATIONS						
DEPUTY DIRECTOR-CHIEF ENGINEER 6/22/70 DATE						