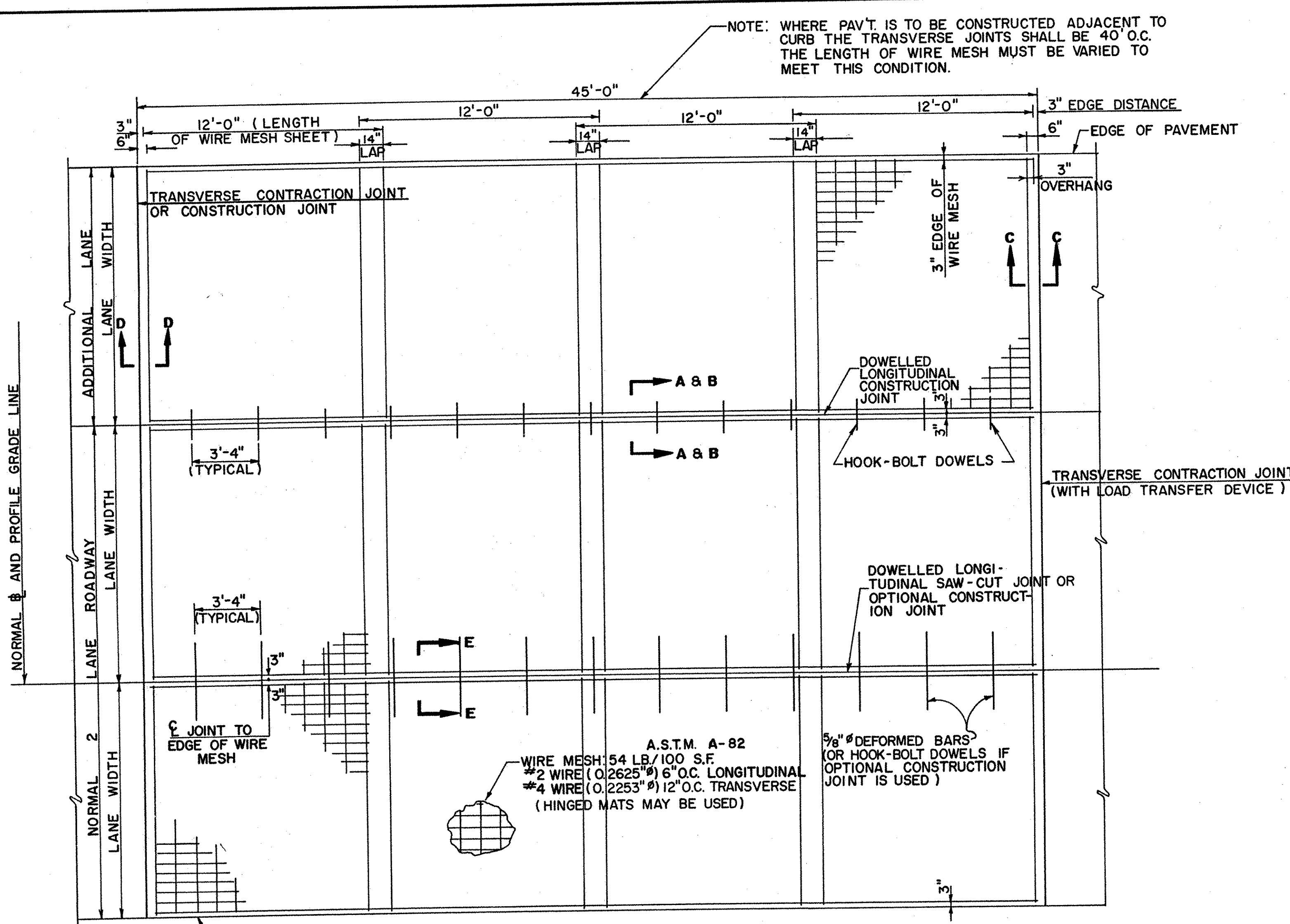
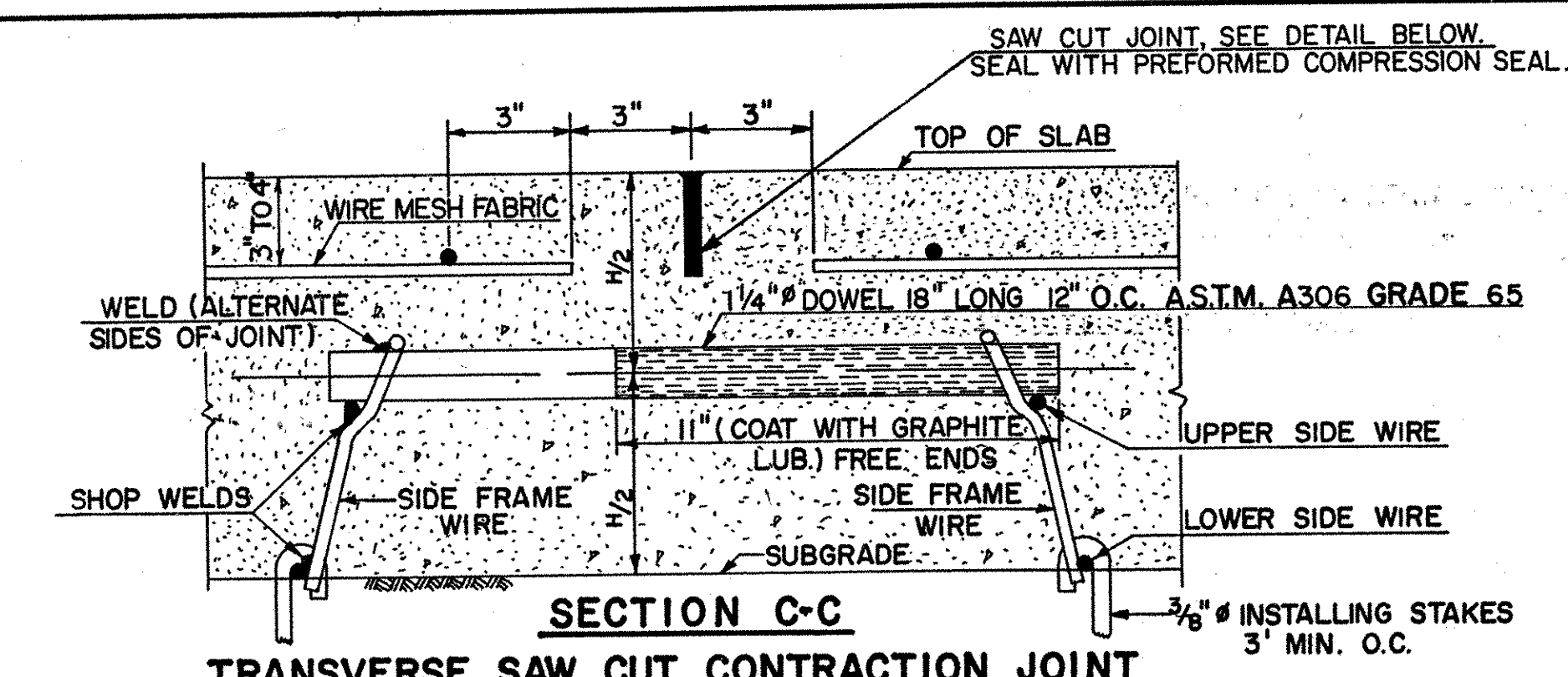


COUNTY	CONTRACT	P. R. A. REG. NO.	STATE	FED. AID PROJECT NO.	SHEET NO.	TOTAL SHEETS
	2	DEL.				
<b>STANDARD SHEET P-1</b>						
<b>REINFORCED PORTLAND CEMENT CONCRETE PAVEMENT</b>						
PREL. TRACING	H.R.C.	DESIGN	J.E.R.	CHKD.	E.L.W.	
REVISIONS						
CORRECTED DIMENSION OF OVERLAP IN WIRE MESH.				2-17-72	J.T.B.	
CORRECTED ASTM AND GRADE OF HOOK-BOLT DOWEL AND 1/4" CONSTRUCTION JOINT DOWEL TO ASTM A306 GRADE 65.				7-19-72	J.T.B.	
PERFORMED COMPRESSION SEAL REQUIRED IN TRANSVERSE JOINTS, SAW CUT AT TRANSVERSE CONSTRUCTION JOINTS, DIMENSION CHANGE ON LONGITUDINAL SAW CUT JOINT AND DETAIL MODIFYING TRANSVERSE SAW CUT JOINTS.				10-7-75	R.T.C.	
APPROVED <i>[Signature]</i>				6-22-70		
DIRECTOR OF OPERATIONS.				DATE		
<i>[Signature]</i>				6/22/70		
DEPUTY DIRECTOR-CHIEF ENGINEER				DATE		

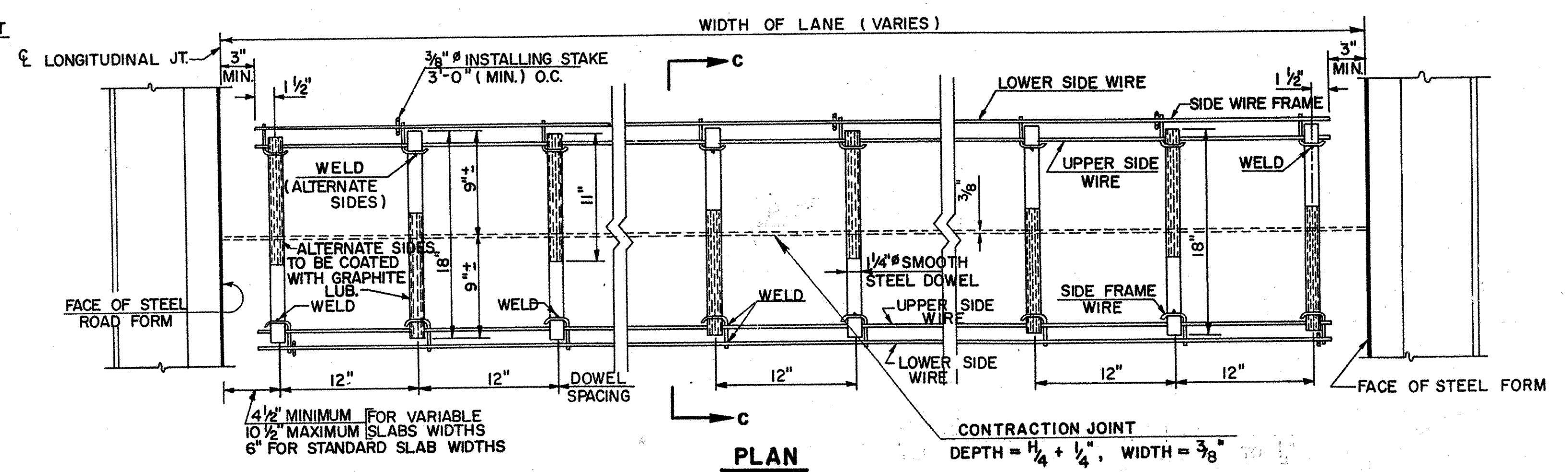


**PLAN OF WIRE MESH & JOINTS FOR 45'-0" SLAB**

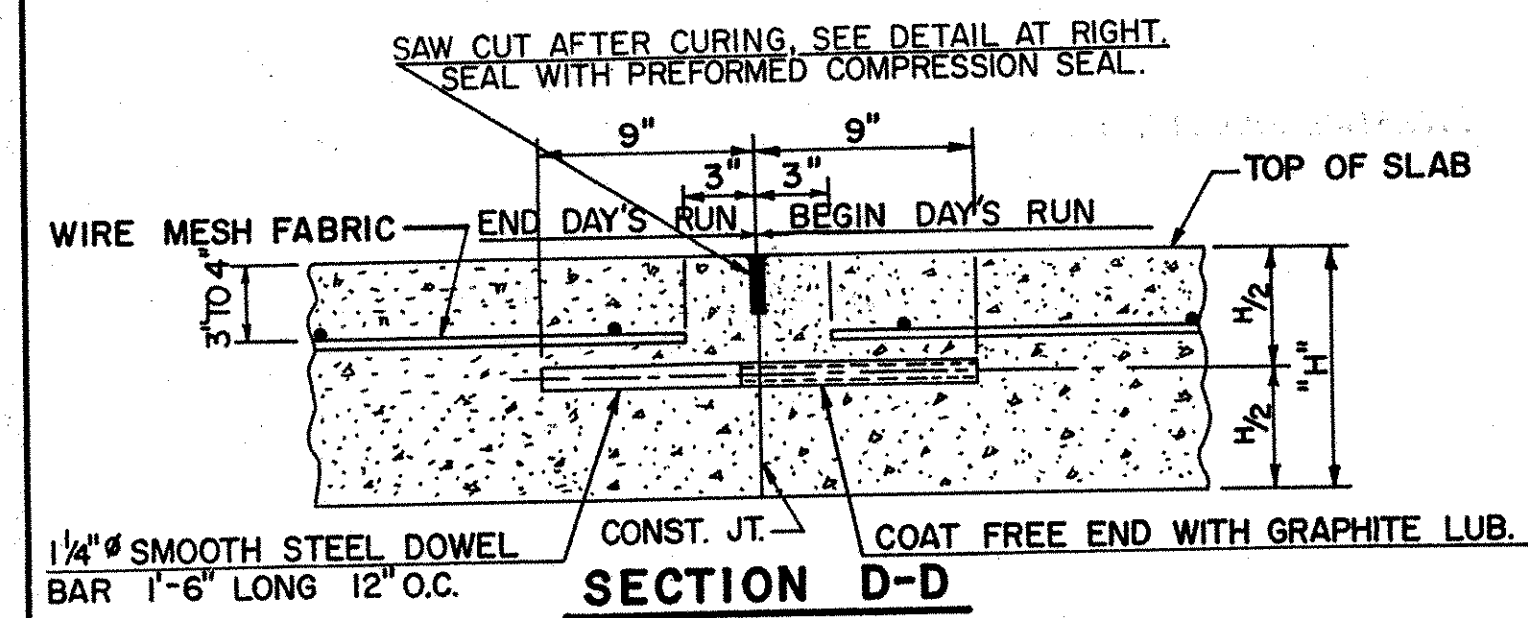


**SECTION C-C TRANSVERSE SAW CUT CONTRACTION JOINT**

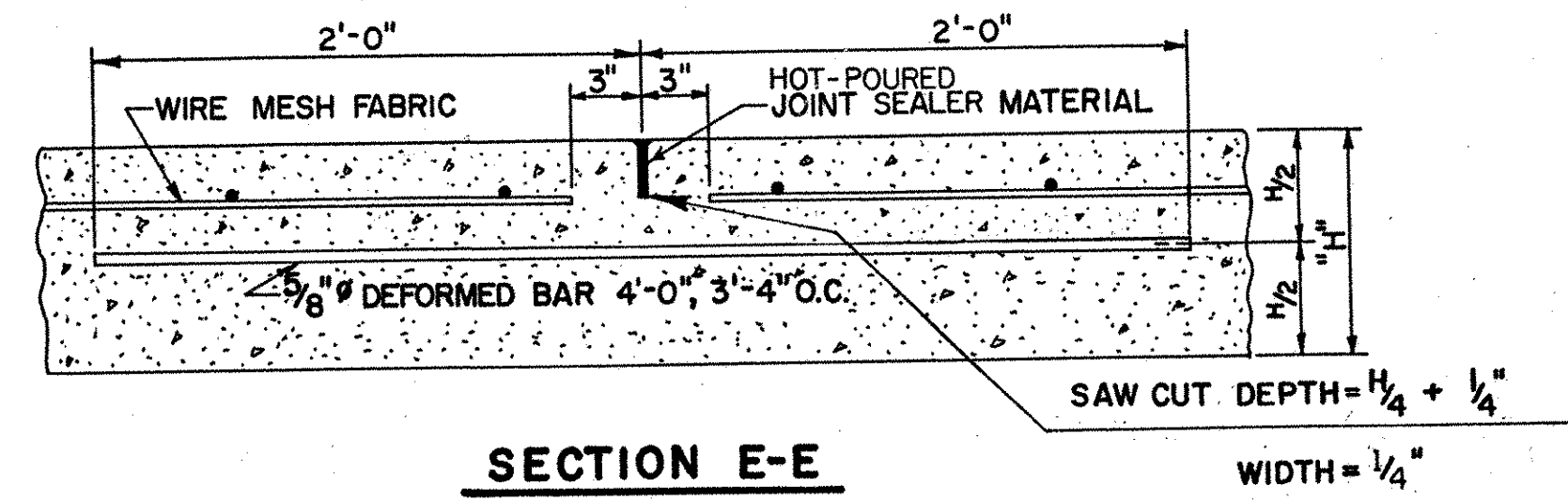
- NOTES: 1. ALL WIRES IN SIDE FRAMES TO BE 3/8" DIAMETER ASTM-A82 THE JUNCTION OF ALL WIRES SHALL BE WELDED.  
2. TRANSVERSE CONTRACTION JOINTS SHALL BE SAWS AS SPECIFIED  
3. FIELD ASSEMBLY OF LOAD TRANSFER DEVICE WILL NOT BE PERMITTED.



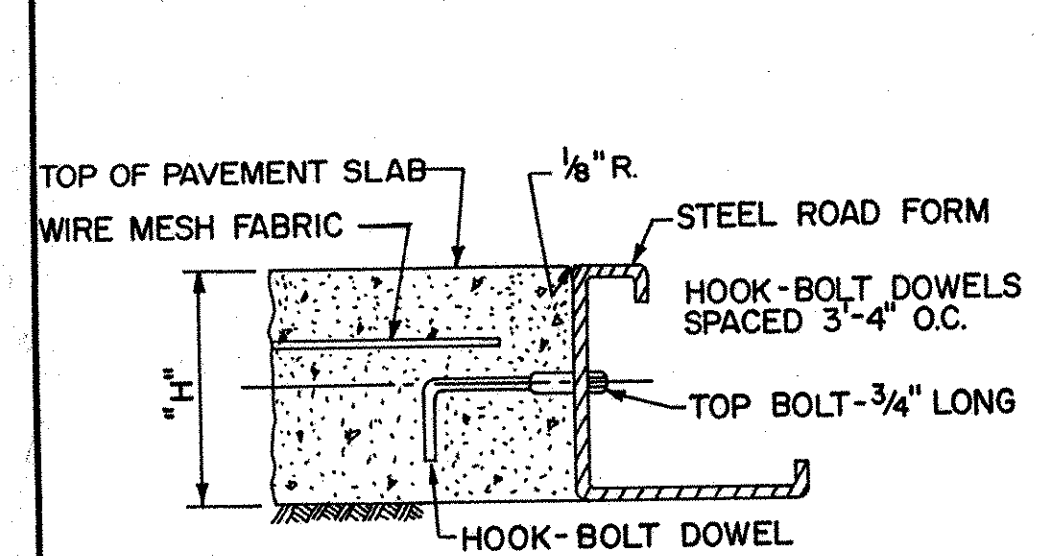
**LOAD TRANSFER DEVICE (TO BE USED AT CONTRACTION JOINTS)**



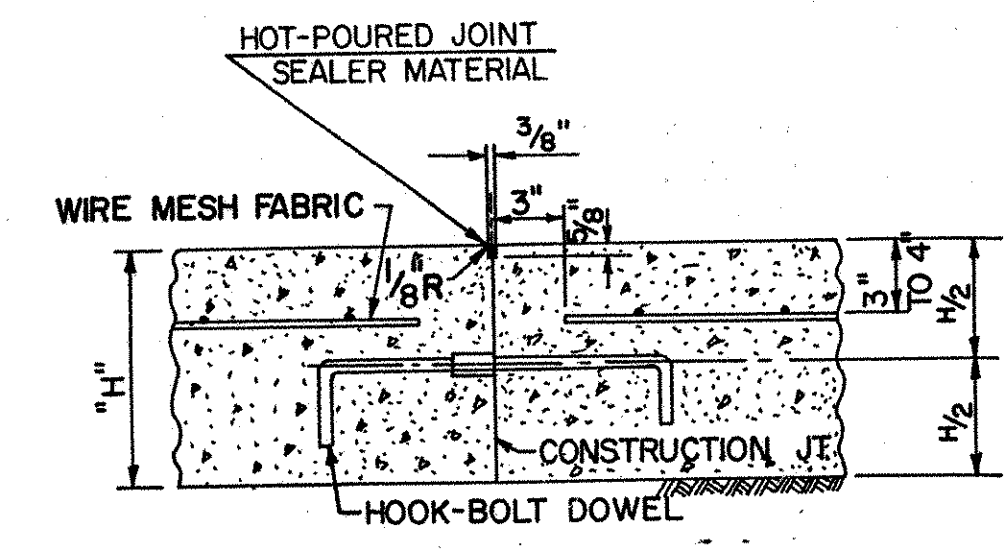
**SECTION D-D TRANSVERSE CONSTRUCTION JOINT**



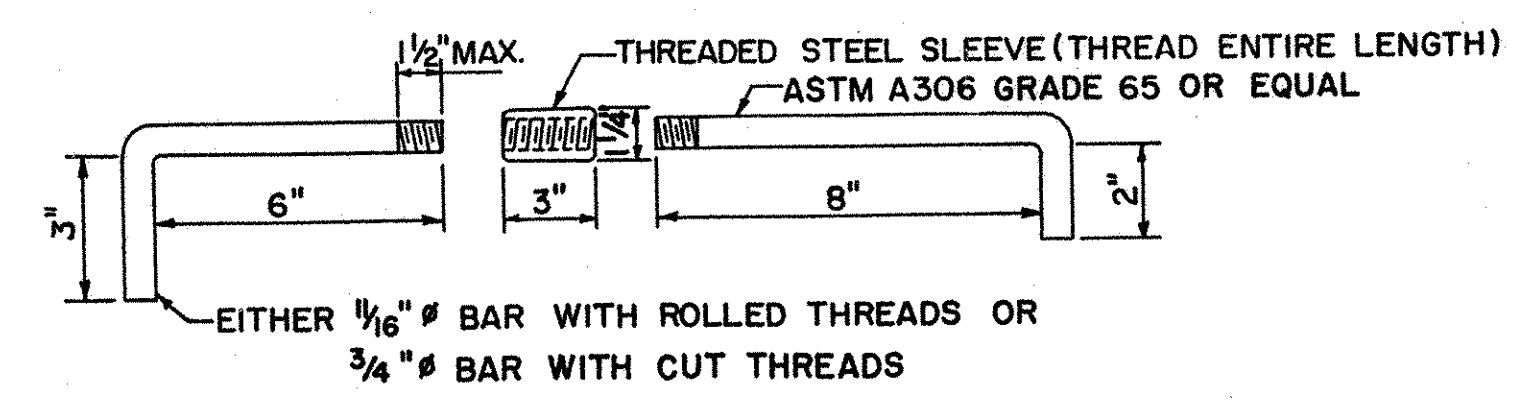
**SECTION E-E DOWELLED LONGITUDINAL SAW-CUT JOINT**



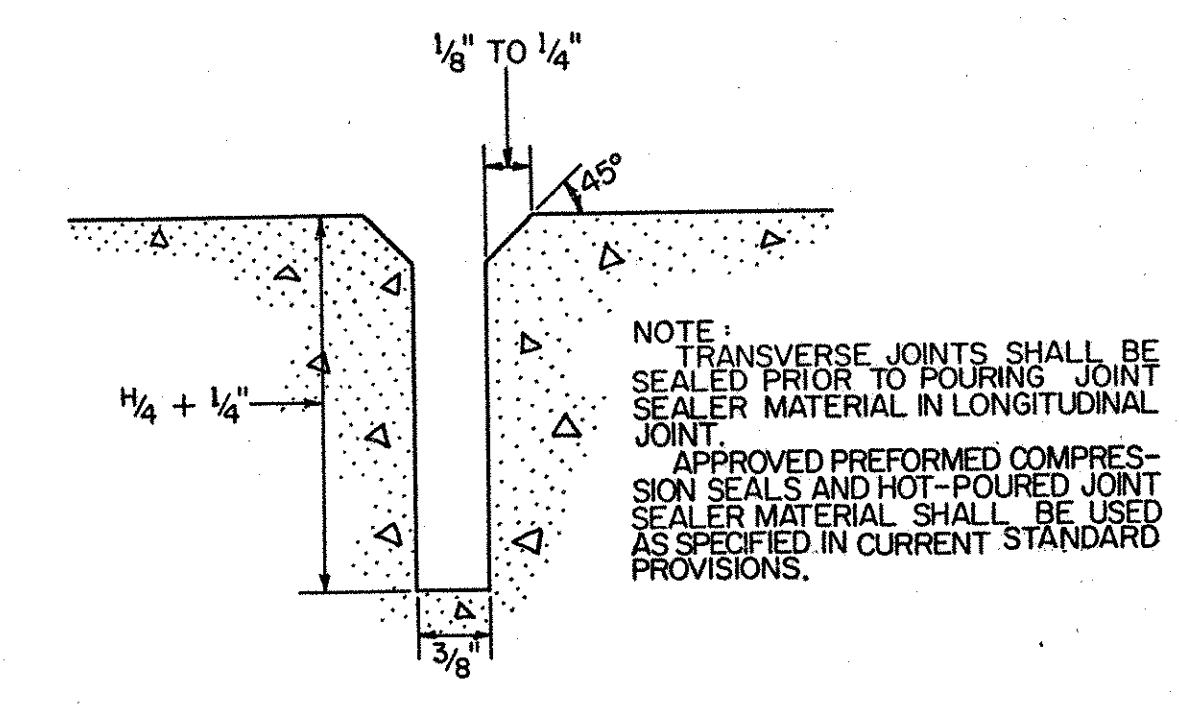
**SECTION A-A DOWELLED LONGITUDINAL CONSTRUCTION JOINT**



**SECTION B-B DOWELLED LONGITUDINAL CONSTRUCTION JOINT**



**DETAIL OF HOOK-BOLT DOWEL**



**DETAIL OF TRANSVERSE SAW CUT JOINT**