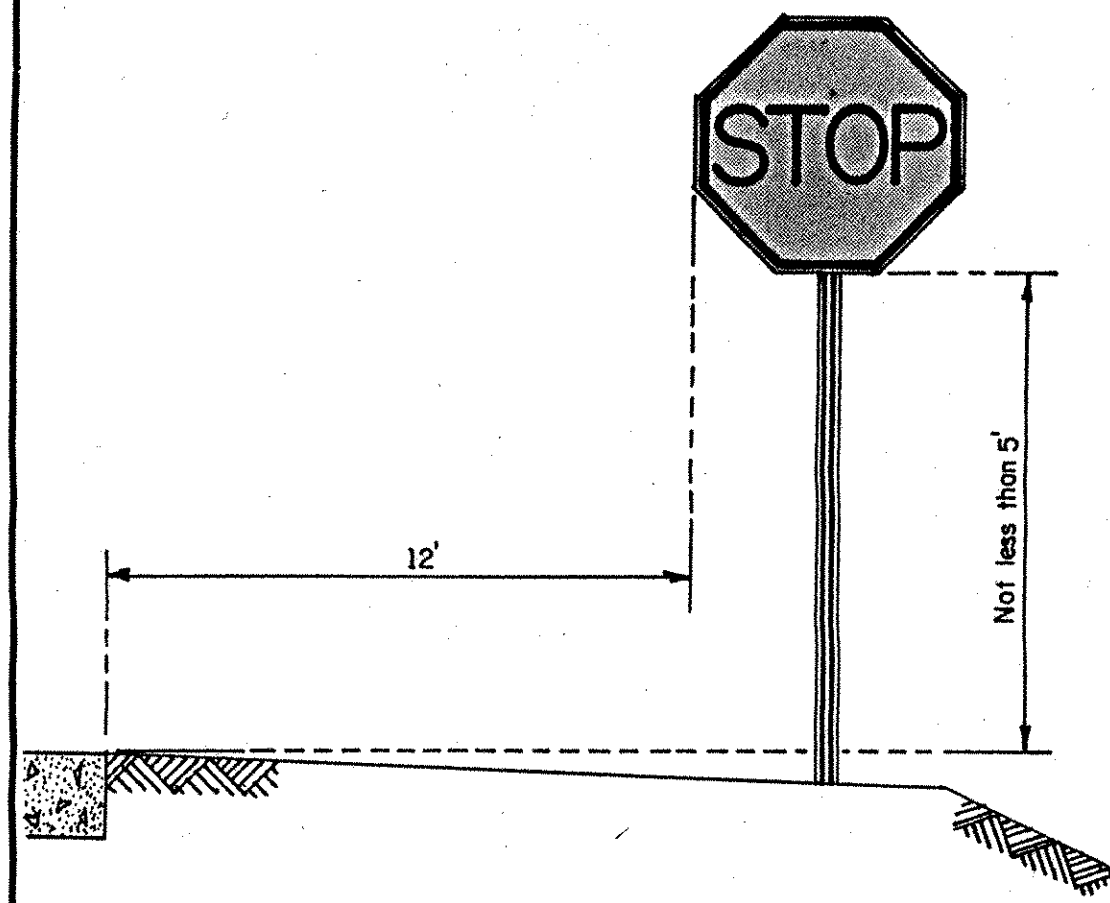
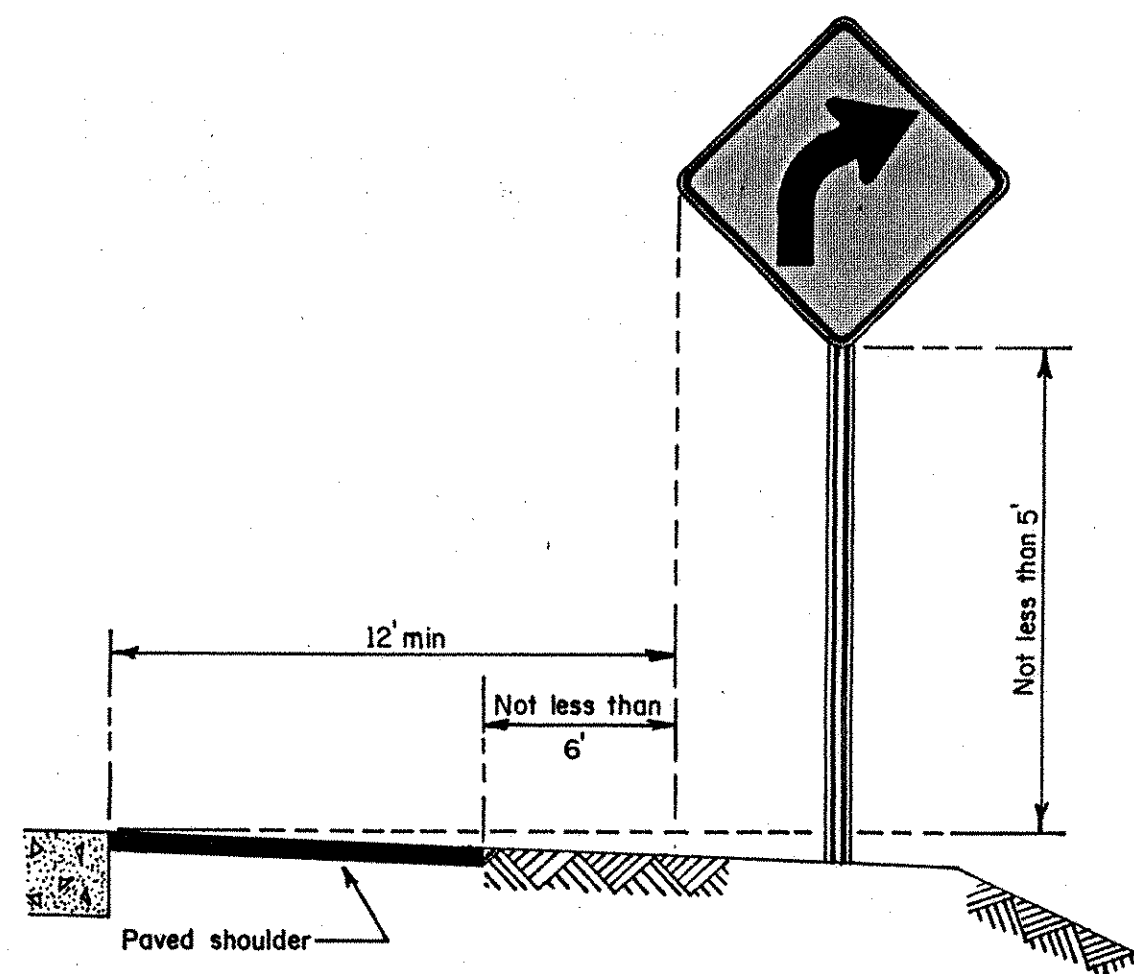


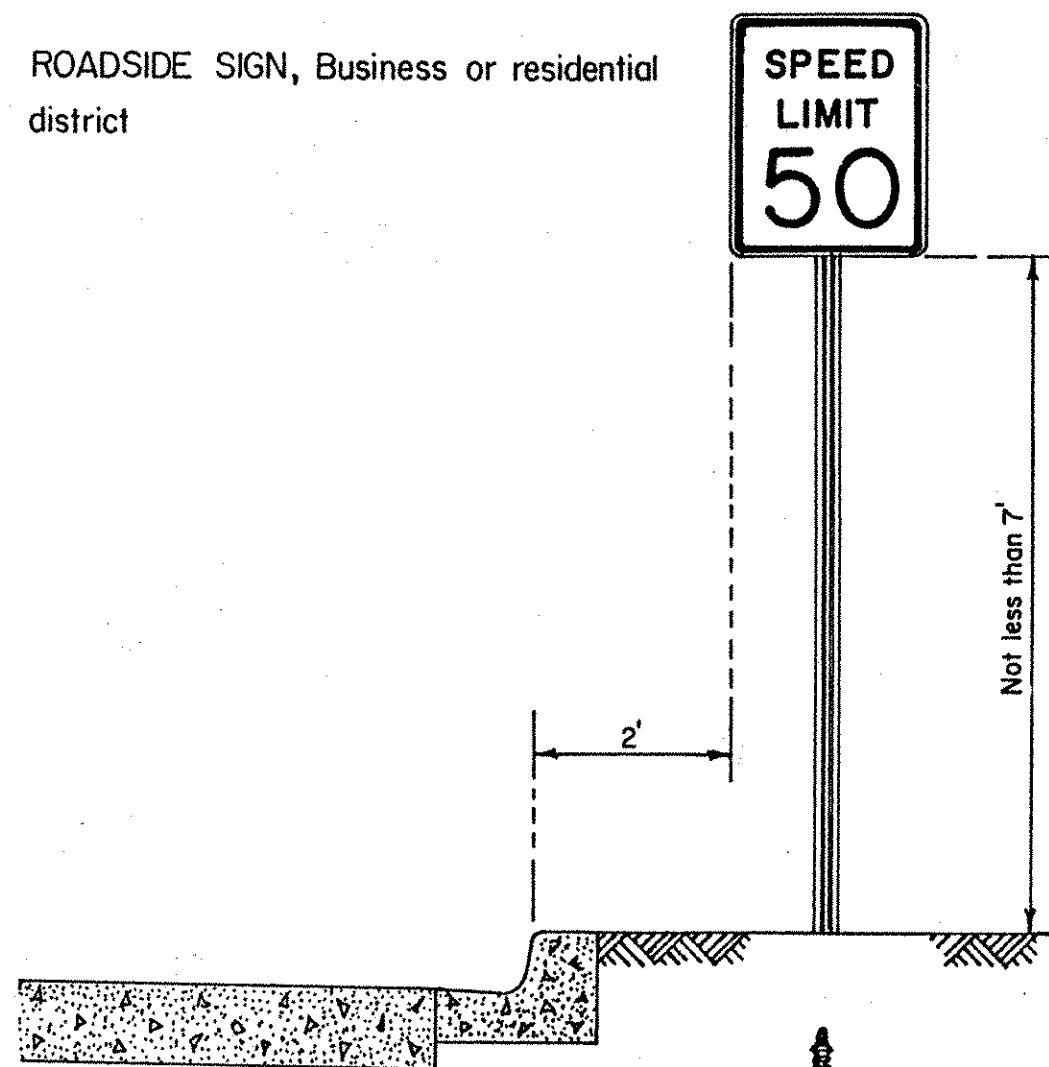
ROADSIDE SIGN, Rural district



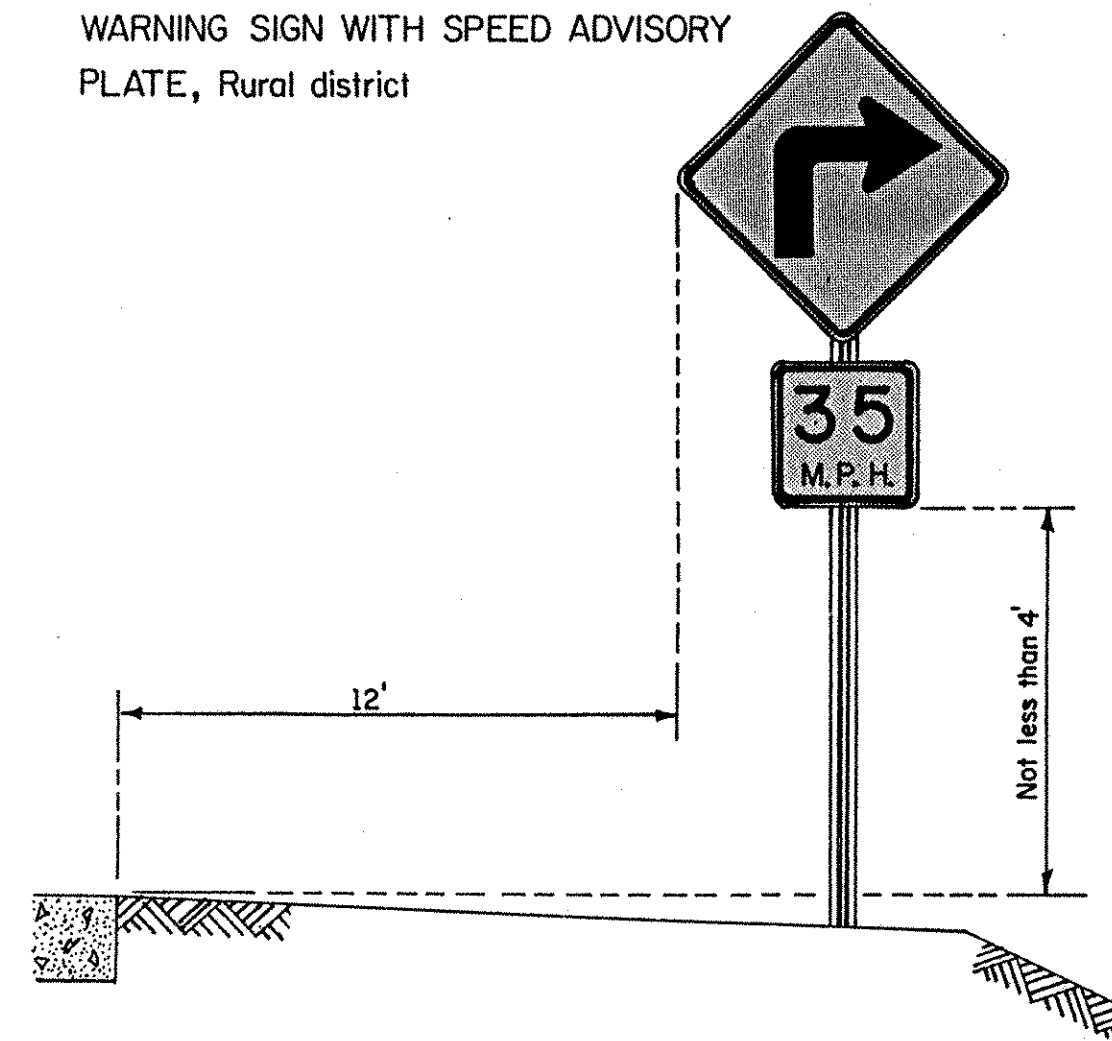
ROADSIDE SIGN, Rural district



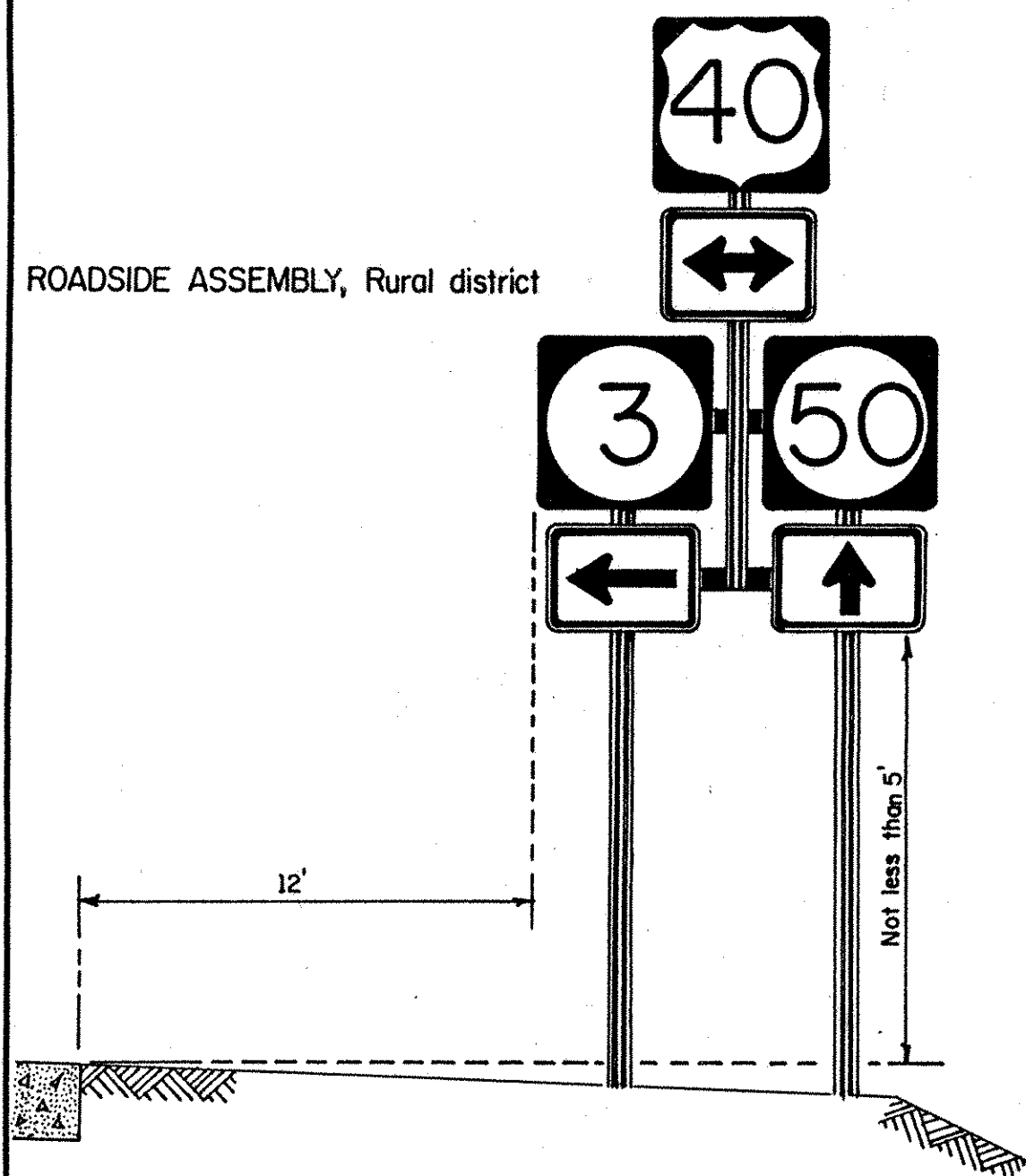
ROADSIDE SIGN, Business or residential district



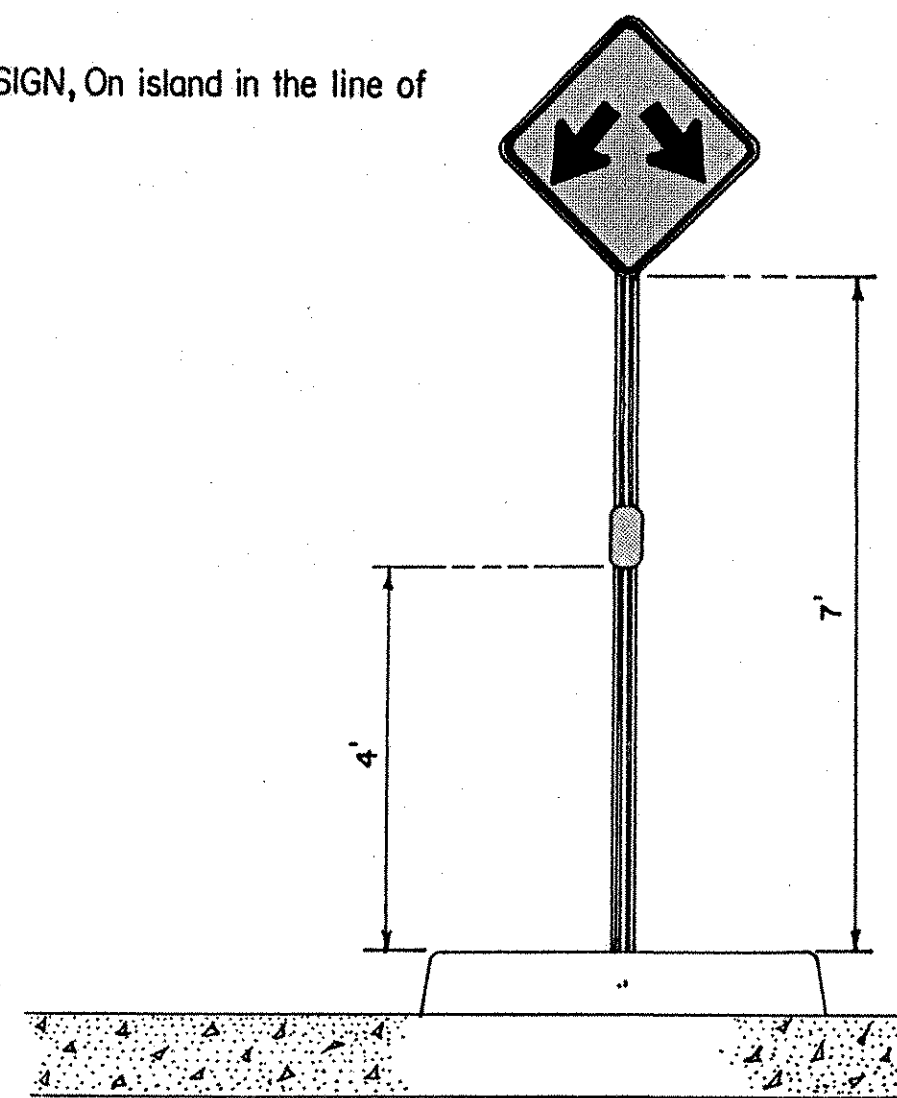
WARNING SIGN WITH SPEED ADVISORY PLATE, Rural district



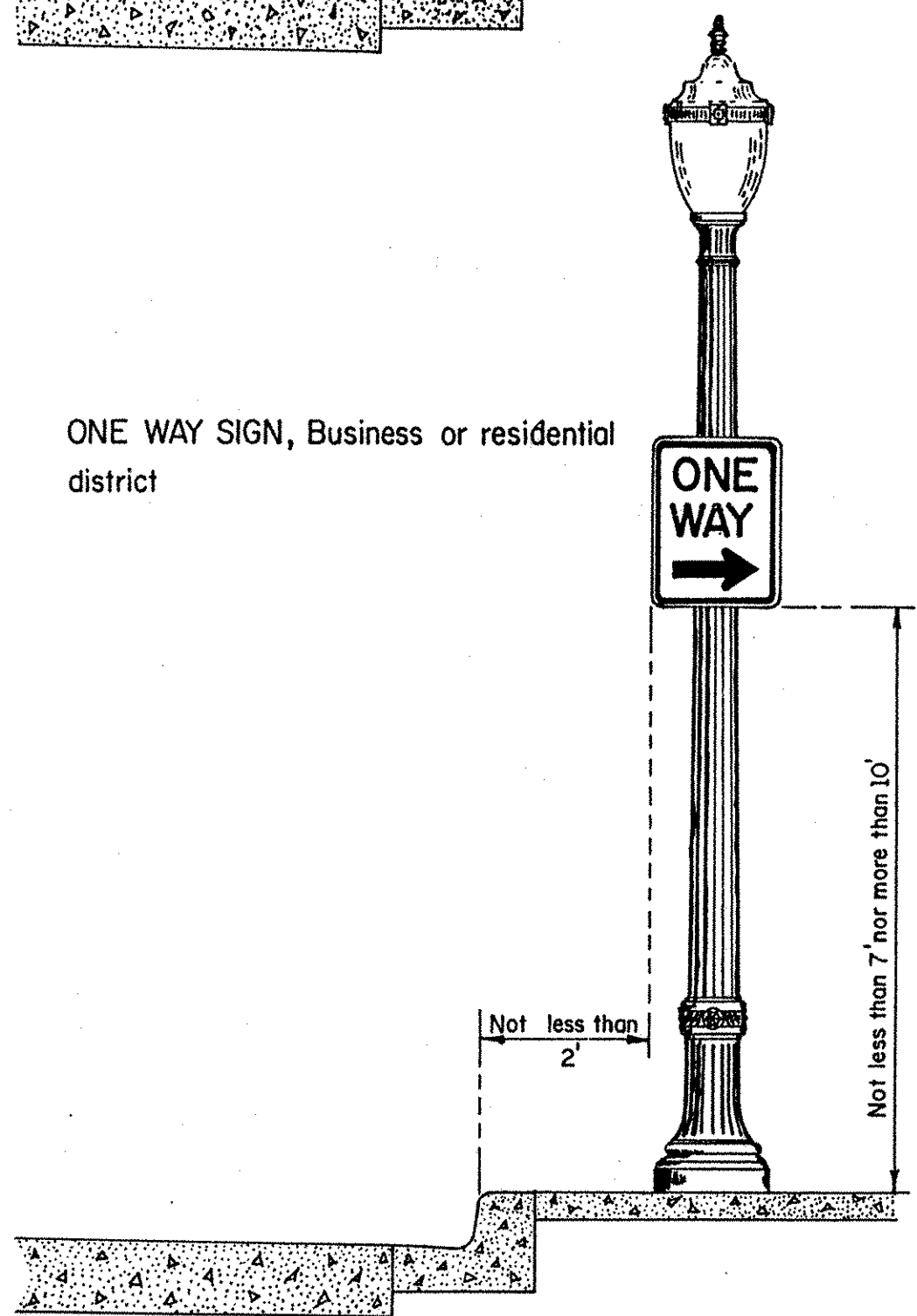
ROADSIDE ASSEMBLY, Rural district



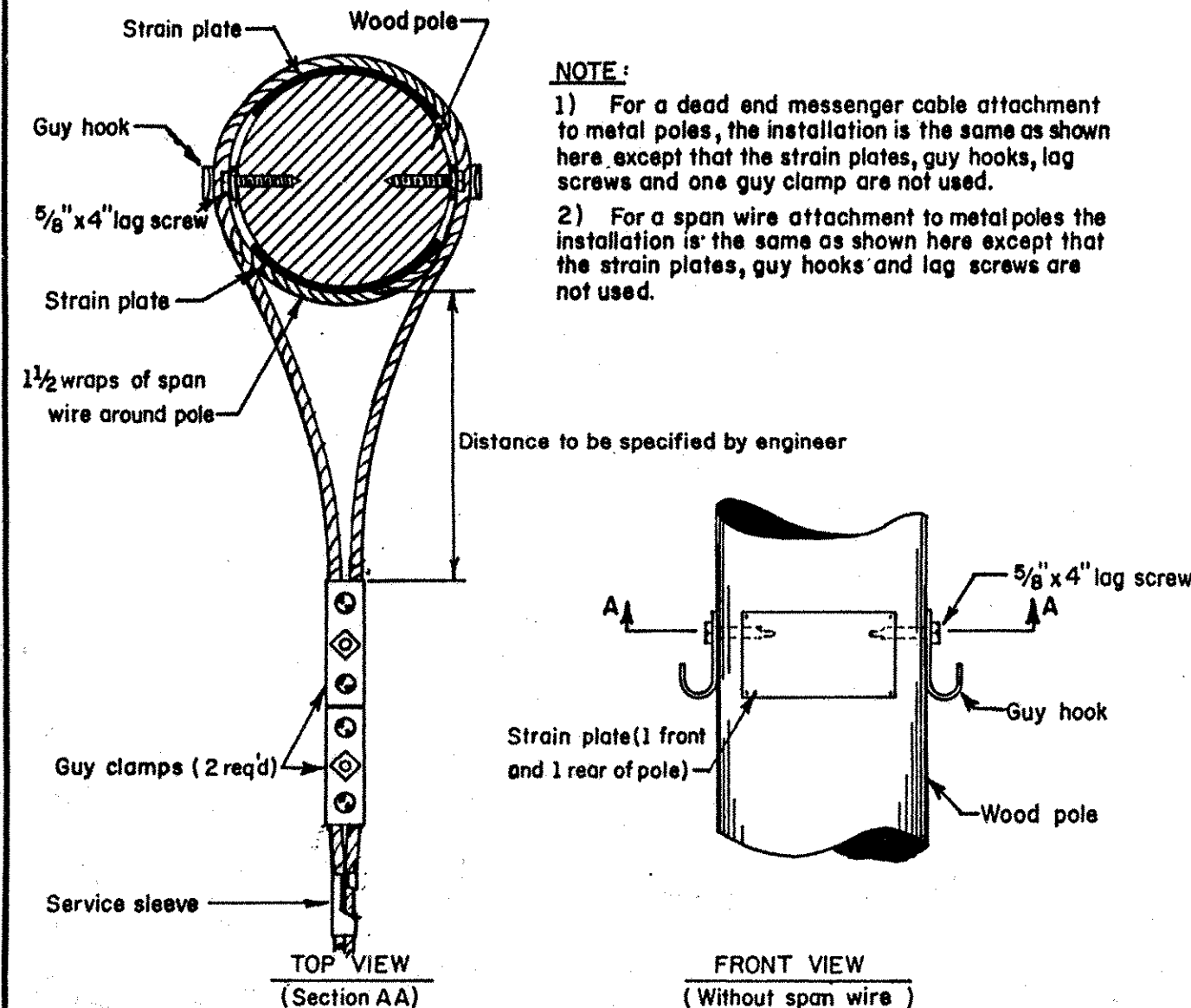
WARNING SIGN, On island in the line of traffic



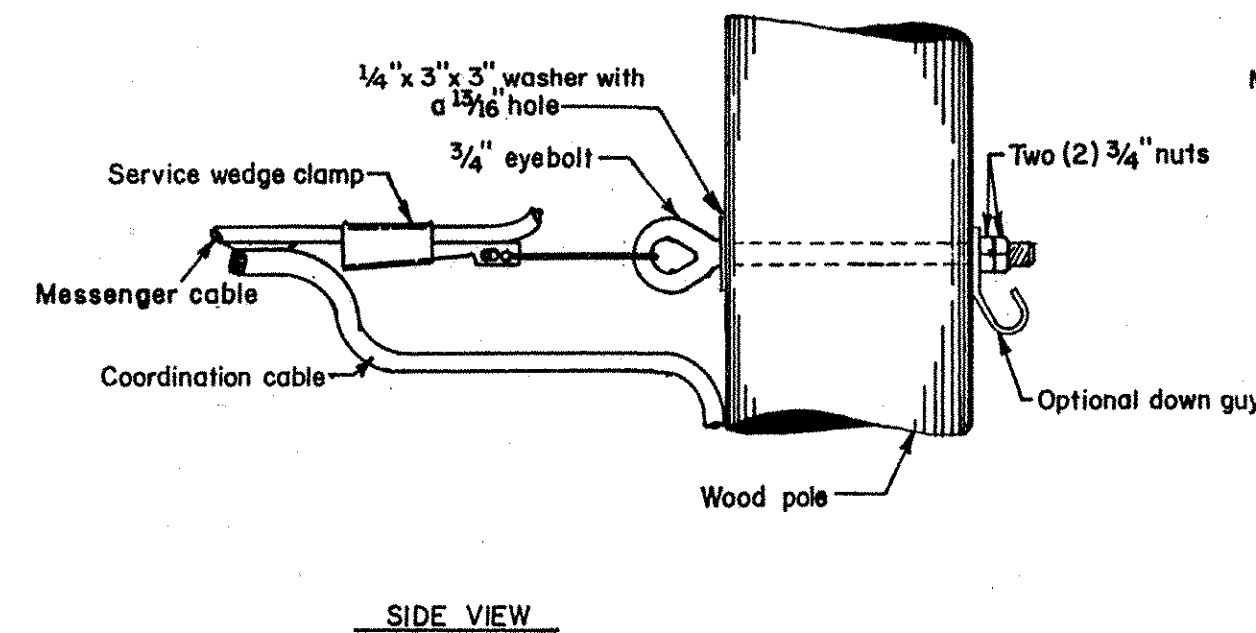
ONE WAY SIGN, Business or residential district



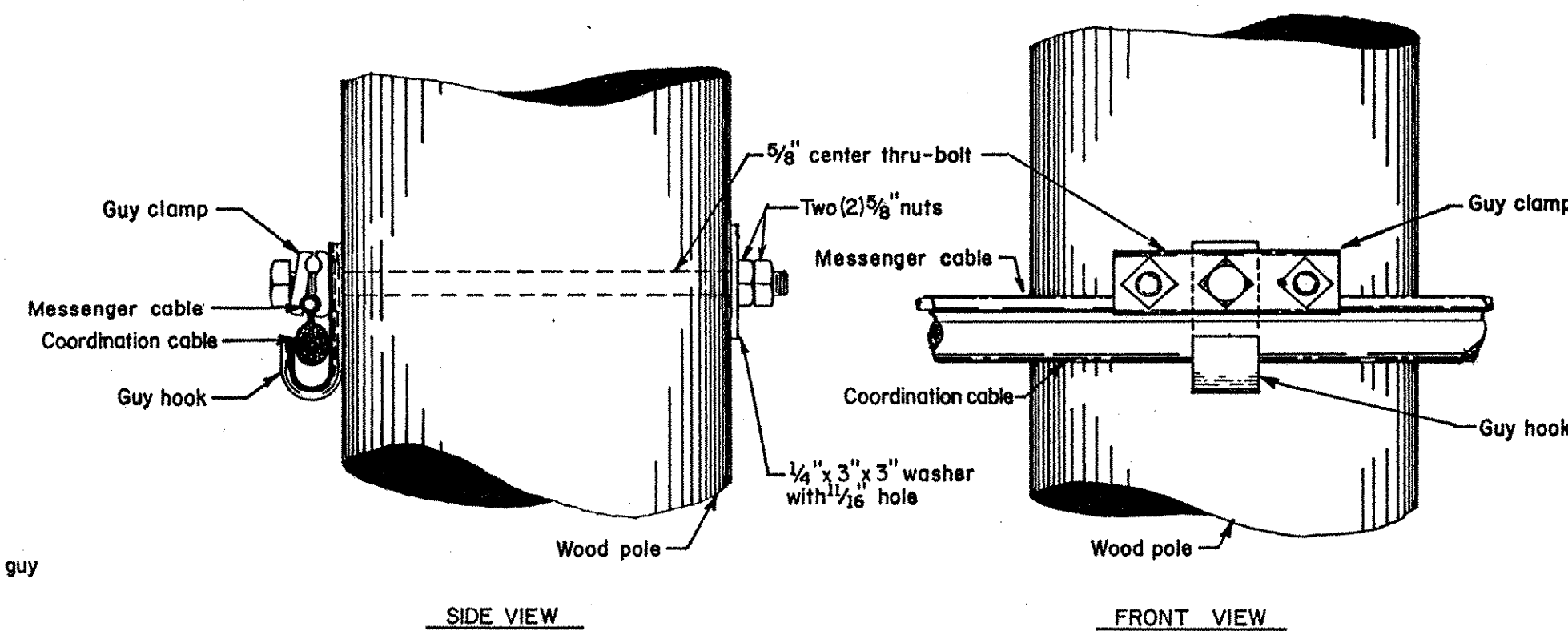
DEAD END MESSENGER CABLE ATTACHMENT (METAL POLES) OR SPAN WIRE ATTACHMENT (WOOD AND METAL POLES)



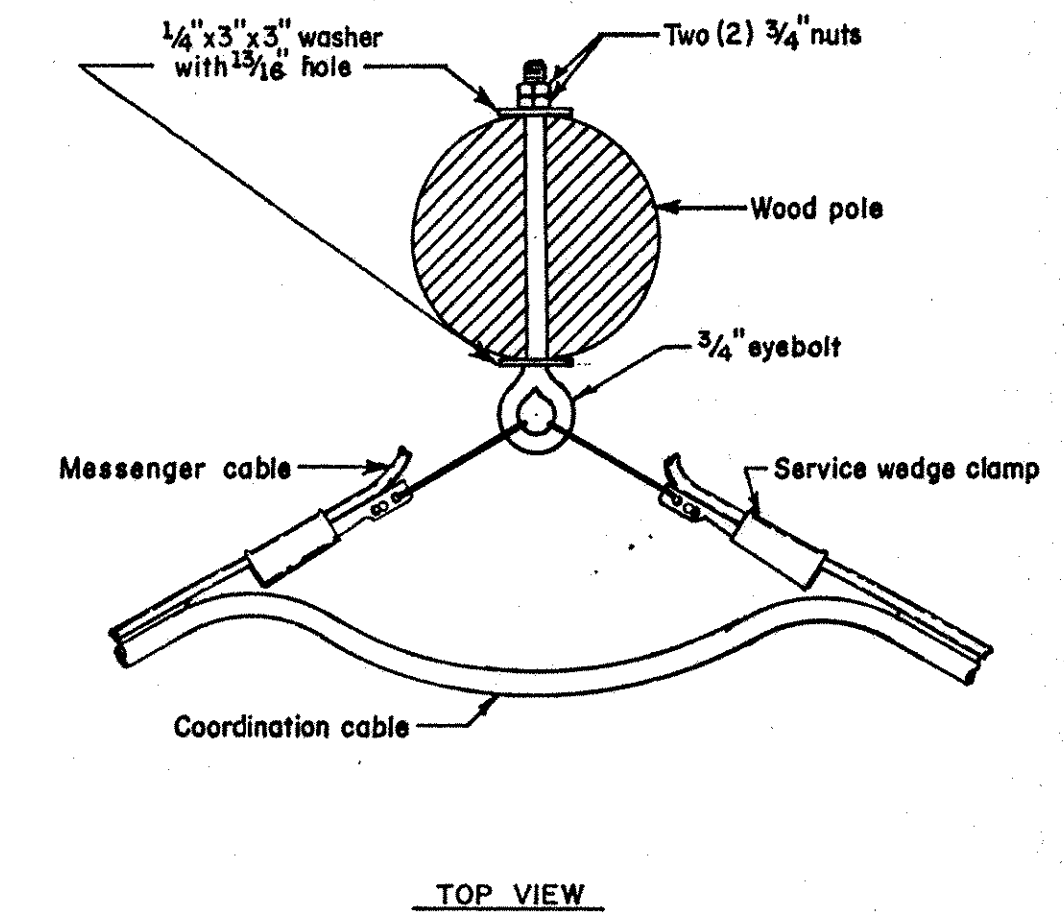
DEAD END MESSENGER CABLE ATTACHMENT (WOOD POLES)



STRAIGHT RUN INTERMEDIATE MESSENGER CABLE ATTACHMENT (WOOD POLES)



ANGULAR INTERMEDIATE MESSENGER CABLE ATTACHMENT (WOOD POLES)



STATE OF DELAWARE DEPARTMENT OF TRANSPORTATION	
STANDARD SHEET NUMBER T-5	
ROADSIDE SIGN PLACEMENT AND SPAN WIRE AND MESSENGER CABLE ATTACHMENTS	
PREL. TRACING R.F.R.	4/24/79 DESIGN CHKD.
RECOMMENDED 5/2	1979 P. E. J. Jansette CHIEF ENGINEER
APPROVED 5/2	1979 R. D. Bevinckx DIRECTOR OF HIGHWAYS
REVISIONS	

NOTE:
The sign post size, weight and depth installed in the ground shall be as determined by the engineer.