

Diurnal Distribution of Traffic

Again from the database of ATR stations, the hour-by-hour distribution of AADT over the 24-hour period was computed for each TPG as an average of the distributions pertaining to the respective ATR stations within the TPG. The computations were made separately for weekday and weekend traffic only, and for the total traffic. These tables can be found on pages **following pages**

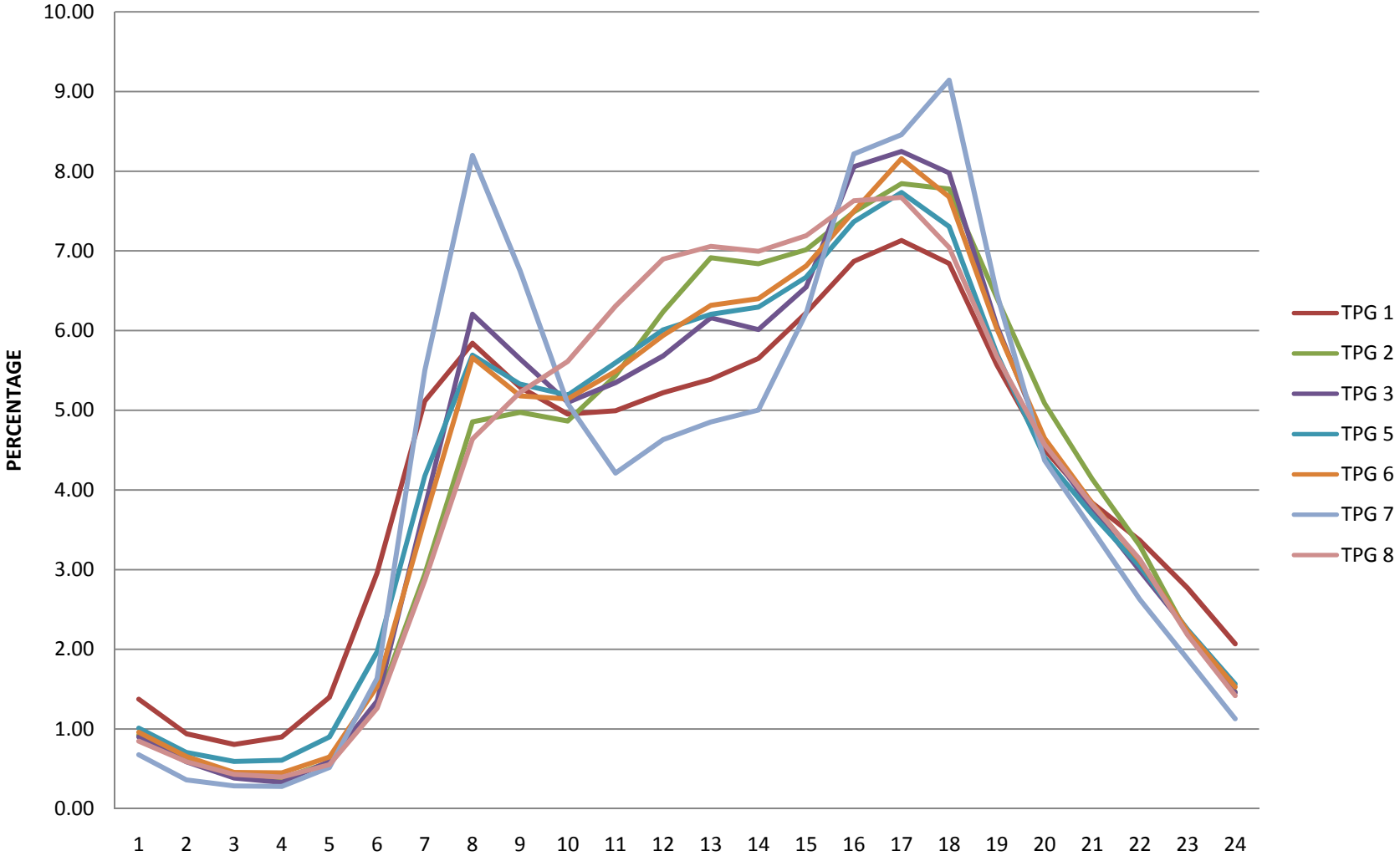
As previously explained, when the diurnal distribution of traffic on a roadway segment or link is required, it is necessary to find the TPG to which the roadway segment belongs. Then referring to the aforesaid tables, the hour by hour distribution of AADT over the 24-hour period can be obtained for that roadway segment.

Diurnal (Hourly) Distribution of Traffic Table

ALL DAYS

HOUR	TPG 1	TPG 2	TPG 3	TPG 4	TPG 5	TPG 6	TPG 7	TPG 8
0	1.37	0.92	0.90	.	1.01	0.96	0.68	0.85
1	0.94	0.60	0.59	.	0.70	0.66	0.36	0.59
2	0.81	0.42	0.38	.	0.59	0.45	0.29	0.43
3	0.90	0.38	0.33	.	0.61	0.45	0.28	0.40
4	1.40	0.58	0.59	.	0.90	0.65	0.52	0.55
5	2.96	1.31	1.35	.	1.97	1.53	1.64	1.26
6	5.12	2.94	3.78	.	4.18	3.64	5.50	2.87
7	5.84	4.86	6.21	.	5.69	5.66	8.20	4.64
8	5.29	4.97	5.64	.	5.33	5.18	6.75	5.22
9	4.95	4.86	5.10	.	5.19	5.14	5.08	5.61
10	4.99	5.43	5.35	.	5.60	5.49	4.21	6.31
11	5.22	6.24	5.68	.	6.01	5.94	4.63	6.90
12	5.39	6.92	6.16	.	6.20	6.32	4.85	7.06
13	5.65	6.84	6.01	.	6.29	6.40	5.00	7.00
14	6.22	7.02	6.55	.	6.67	6.81	6.22	7.19
15	6.87	7.49	8.06	.	7.37	7.50	8.22	7.63
16	7.13	7.84	8.25	.	7.73	8.16	8.46	7.67
17	6.84	7.78	7.98	.	7.31	7.68	9.14	7.04
18	5.57	6.41	6.06	.	5.71	6.02	6.46	5.67
19	4.50	5.09	4.59	.	4.41	4.65	4.37	4.57
20	3.84	4.14	3.75	.	3.69	3.84	3.50	3.81
21	3.37	3.30	2.99	.	3.04	3.11	2.63	3.13
22	2.77	2.19	2.24	.	2.25	2.23	1.88	2.18
23	2.07	1.46	1.46	.	1.56	1.53	1.13	1.42

DIURNAL DISTRIBUTION (ALL DAYS)

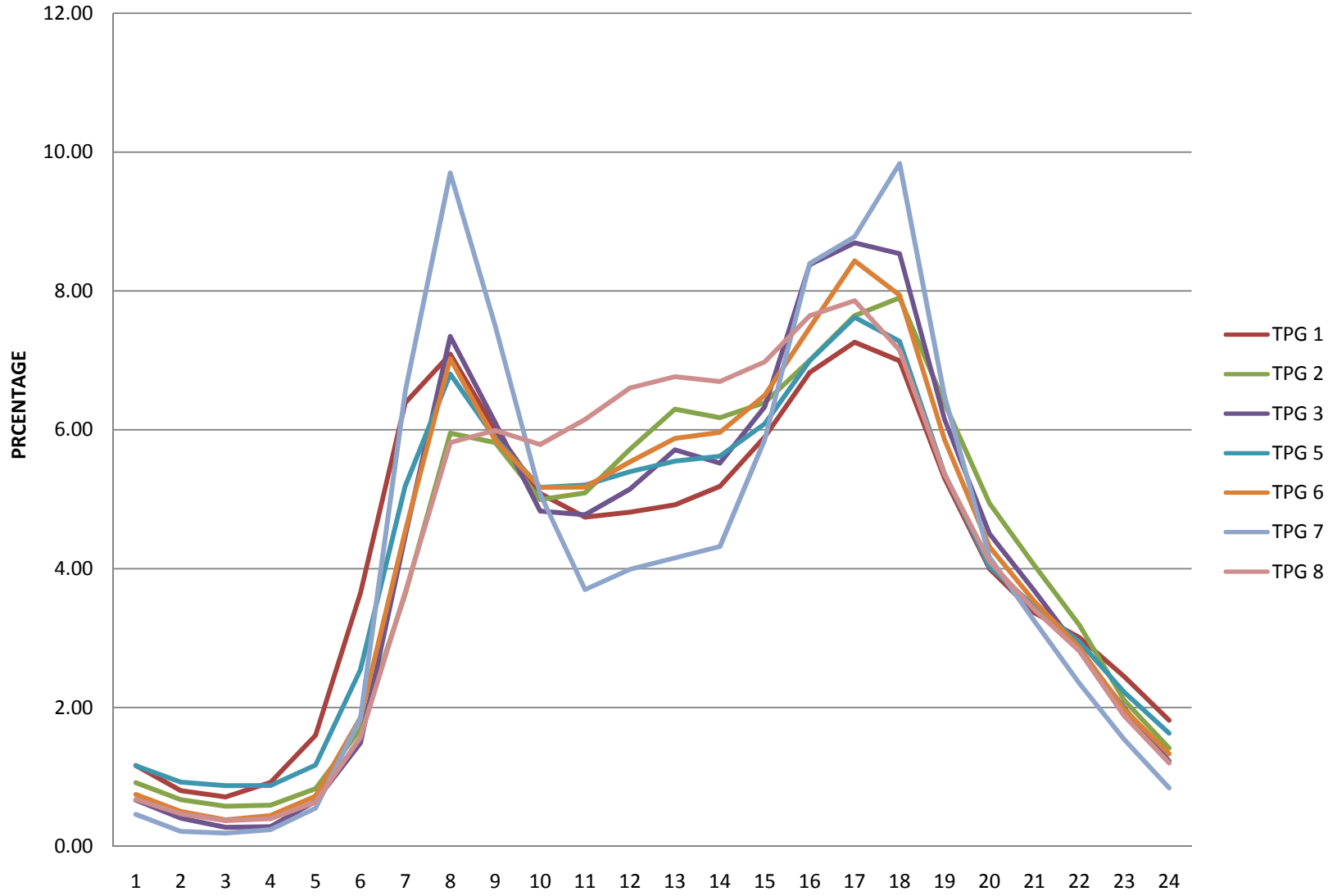


Diurnal (Hourly) Distribution of Traffic Table

WEEKDAYS

HOUR	TPG 1	TPG 2	TPG 3	TPG 4	TPG 5	TPG 6	TPG 7	TPG 8
0	1.94	1.75	1.60	.	1.66	1.52	1.52	1.23
1	1.31	1.31	1.13	.	1.28	1.07	0.91	0.87
2	1.07	0.96	0.73	.	0.98	0.65	0.64	0.57
3	0.87	0.75	0.46	.	0.84	0.47	0.41	0.41
4	0.96	0.76	0.45	.	0.85	0.51	0.41	0.41
5	1.41	0.99	0.95	.	1.27	0.85	0.95	0.73
6	2.23	1.51	1.79	.	2.00	1.61	1.78	1.45
7	2.97	2.25	2.85	.	2.87	2.60	2.76	2.57
8	3.84	3.24	4.33	.	4.06	3.89	4.19	4.03
9	4.86	4.58	5.98	.	5.28	5.43	5.34	5.63
10	5.76	5.92	7.11	.	6.47	6.50	6.26	6.96
11	6.28	6.91	7.31	.	7.08	7.16	7.06	7.81
12	6.54	7.76	7.52	.	7.29	7.55	7.54	7.92
13	6.68	7.84	7.46	.	7.25	7.55	7.50	7.78
14	6.90	7.76	7.12	.	7.22	7.60	7.42	7.70
15	6.98	7.68	7.16	.	7.14	7.52	7.41	7.63
16	6.89	7.37	6.91	.	6.95	7.47	7.44	7.29
17	6.56	6.78	6.50	.	6.45	7.02	6.94	6.72
18	5.98	6.13	5.81	.	5.75	6.07	6.16	5.91
19	5.36	5.21	4.90	.	4.95	5.14	5.11	5.01
20	4.73	4.29	4.08	.	4.19	4.34	4.31	4.14
21	4.06	3.58	3.32	.	3.46	3.33	3.45	3.30
22	3.34	2.71	2.68	.	2.72	2.43	2.71	2.37
23	2.48	1.97	1.83	.	1.99	1.71	1.77	1.56

DIURNAL DISTRIBUTION (WEEKDAYS)



Diurnal (Hourly) Distribution of Traffic Table

WEEKENDS

HOURL	TPG 1	TPG 2	TPG 3	TPG 4	TPG 5	TPG 6	TPG 7	TPG 8
0	1.16	0.92	0.67	.	1.16	0.75	0.46	0.68
1	0.80	0.67	0.41	.	0.93	0.50	0.22	0.47
2	0.71	0.58	0.27	.	0.87	0.38	0.19	0.37
3	0.92	0.59	0.28	.	0.88	0.44	0.24	0.40
4	1.60	0.83	0.65	.	1.17	0.72	0.55	0.64
5	3.65	1.69	1.49	.	2.55	1.85	1.85	1.57
6	6.39	3.64	4.48	.	5.19	4.54	6.56	3.67
7	7.09	5.95	7.34	.	6.80	7.02	9.70	5.82
8	6.00	5.82	6.10	.	5.88	5.85	7.50	5.99
9	5.08	4.99	4.83	.	5.17	5.17	5.07	5.79
10	4.74	5.09	4.78	.	5.20	5.17	3.70	6.15
11	4.81	5.72	5.15	.	5.40	5.54	3.99	6.60
12	4.92	6.30	5.71	.	5.55	5.88	4.15	6.77
13	5.19	6.18	5.52	.	5.62	5.96	4.32	6.70
14	5.90	6.39	6.33	.	6.09	6.50	5.86	6.98
15	6.83	7.00	8.38	.	7.00	7.47	8.40	7.64
16	7.26	7.65	8.69	.	7.62	8.43	8.78	7.86
17	6.99	7.90	8.54	.	7.28	7.94	9.84	7.15
18	5.31	6.39	6.15	.	5.37	5.86	6.49	5.36
19	4.00	4.94	4.50	.	4.03	4.32	4.17	4.11
20	3.36	4.05	3.68	.	3.46	3.53	3.25	3.41
21	3.01	3.19	2.82	.	2.95	2.86	2.35	2.81
22	2.45	2.10	1.99	.	2.22	1.98	1.54	1.88
23	1.81	1.42	1.23	.	1.63	1.33	0.84	1.20

DIURNAL DISTRIBUTION (WEEKENDS)

