

Gateway Interactive Map User guide

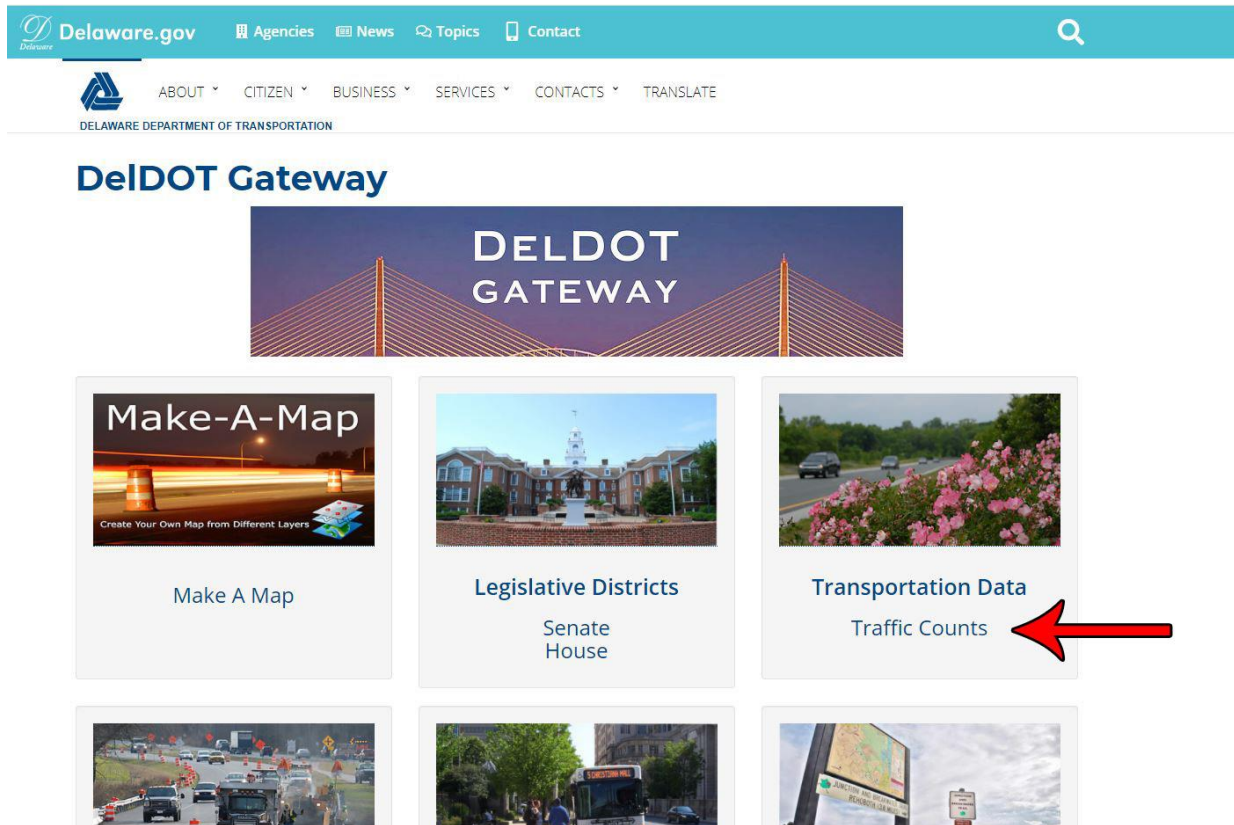
TRAFFIC VOLUME DATA

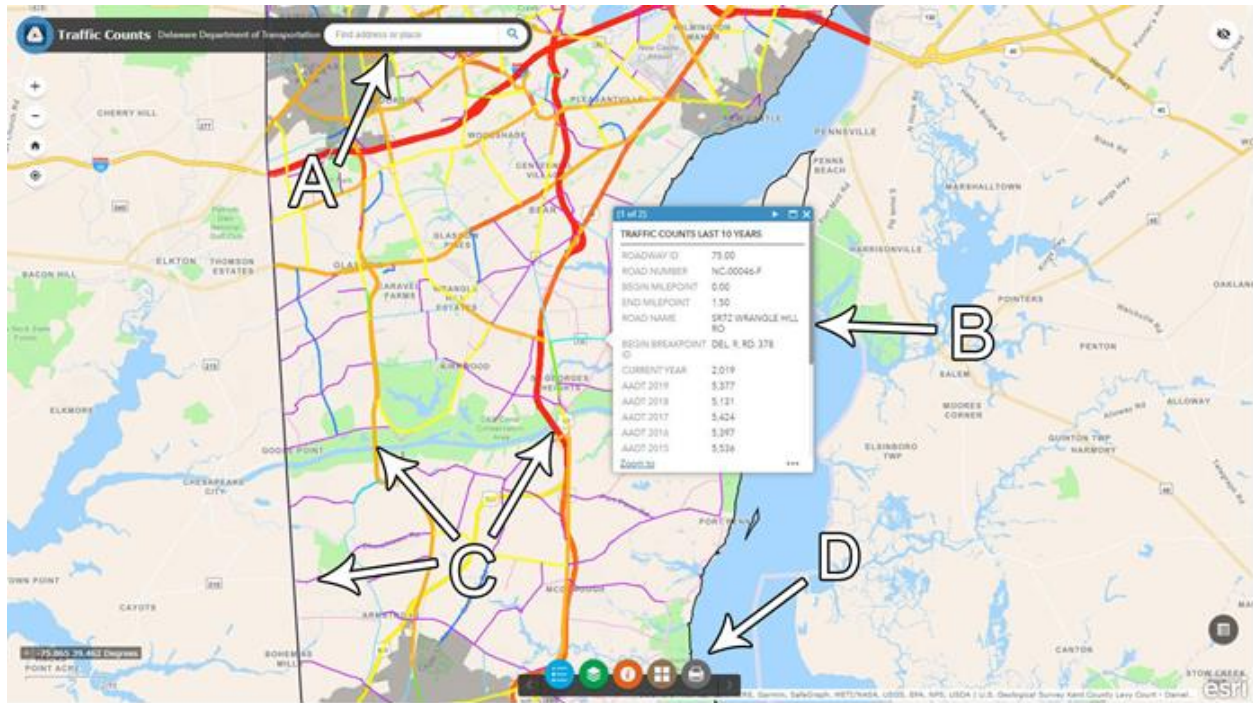
Beginning on 2021 the Vehicle Volume Summary or Traffic Counts will no longer be available in a book format. The annual results will be available through an interactive map created by Del Dot called **Gateway**. Each segment will include 10 years of historical data, inventory road numbers, mile points and road names among other information concerning each specific segment of road.

User information:

Gateway online link : <https://deldot.gov/Programs/gate/index.shtml>

Follow the link above and click on the words “**Traffic Counts**” as shown below.





A: Search bar

A search bar has been provided to make it easy and simple to find any road. Type in any road in Delaware and the map will automatically navigate to the road being searched.

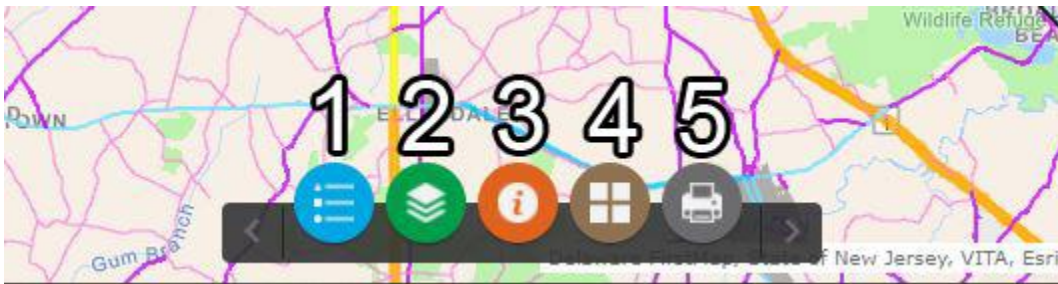
B: Traffic data and road information block

By clicking on a road segment, an information block will appear which contains traffic counts data related to that specific segment. Some roads consist of multiple segments and the traffic data will vary from segment to segment. It's very important to note that only roads that fall under Del Dot's state

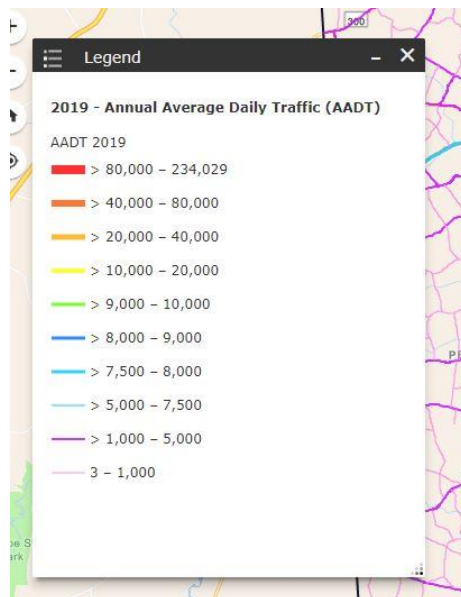
maintenance responsibilities will have traffic data available. Any roads maintained by municipalities or suburban developments will not have any traffic data available.

C: State maintained roads will be distinguished by bright colors which also represent the amount of traffic traveling through each segment.

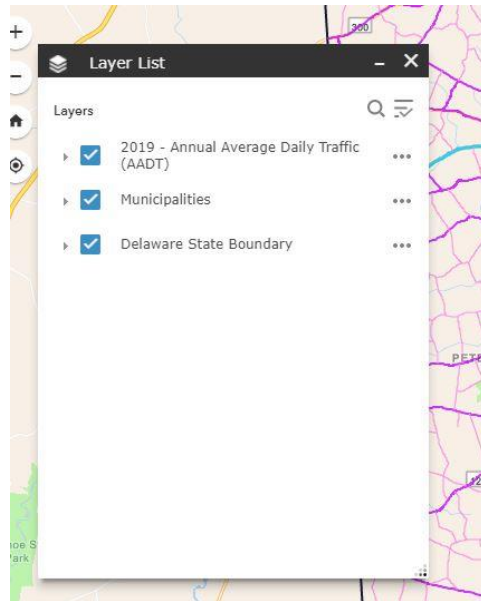
D: Each widget contains different options such as legend, layers, basemap gallery and printing options.



1: Legend depicting traffic volumes by color



2: Layers list. Allows you to choose which layer you would like to see



3: Information about Gateway

4: Basemap gallery options. Allows you to choose between several different image layers. The most popular image layers are Imagery and Streets.



5: Printing options

