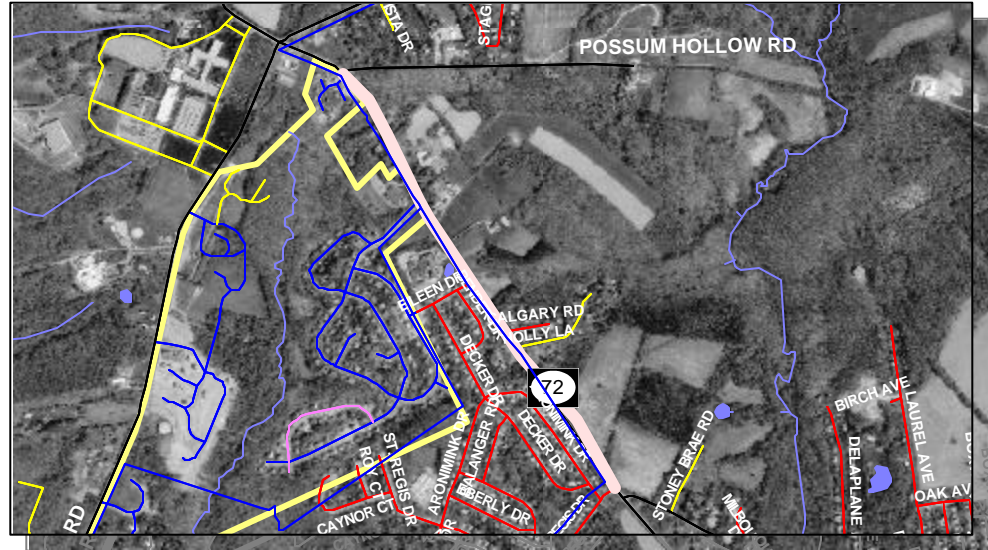


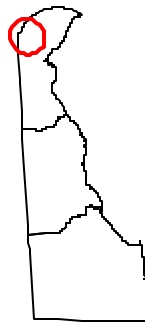
POSSUM PARK ROAD FROM POSSUM HOLLOW ROAD TO OLD POSSUM PARK ROAD

PROJECT SCOPE/DESCRIPTION: This project will widen and reconstruct the existing shoulders of Possum Park Road (SR 72) from Possum Hollow Road to Old Possum Park Road to 12'. Additional improvements include guardrail and drainage improvements, hot mix patching, and a milling/overlay to the roadway.

PROJECT JUSTIFICATION: This project will improve transportation modes along the corridor.



County:	New Castle
Municipality:	
Funding Program:	Road System – Locals
Functional Category:	Management
Representative District:	21, 22, 23
Senatorial District:	6, 8



POSSUM PARK ROAD FROM POSSUM HOLLOW ROAD TO OLD POSSUM PARK ROAD (CONTINUED)

PROJECT FUNDING INFORMATION

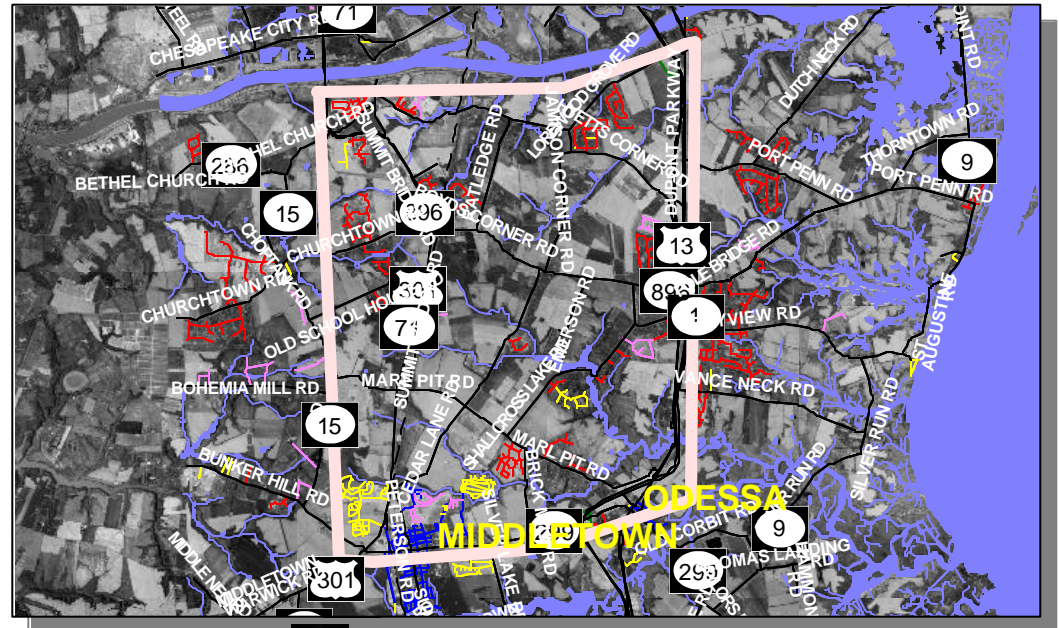
Project	Funding Type	Original Estimate	Current Estimate	Authorization	Committed as of 06/30/03	Expended as of 06/30/03	Committed Unexpended as of 06/30/03	Authorization Available
Possum Park Road from Possum Hollow Road to Old Possum Park Road		\$ 2,850.0						
Prior Years	State			\$ 0.0	\$ 0.0	\$ 0.0	\$ 0.0	\$ 0.0
	Federal			\$ 0.0	\$ 0.0	\$ 0.0	\$ 0.0	\$ 0.0
	Other			\$ 0.0	\$ 0.0	\$ 0.0	\$ 0.0	\$ 0.0
FY 2003	State		\$ 2,850.0	\$ 0.0	\$ 0.0	\$ 0.0	\$ 0.0	\$ 0.0
	Federal			\$ 0.0	\$ 0.0	\$ 0.0	\$ 0.0	\$ 0.0
	Other			\$ 0.0	\$ 0.0	\$ 0.0	\$ 0.0	\$ 0.0
FY 2004 Authorized	State			\$ 250.0				\$ 250.0
	Federal			\$ 0.0				\$ 0.0
	Other			\$ 0.0				\$ 0.0
FY 2005 Projected	State			\$ 100.0				\$ 350.0
	Federal			\$ 0.0				\$ 0.0
	Other			\$ 0.0				\$ 0.0
FY 2006 Projected	State			\$ 0.0				\$ 350.0
	Federal			\$ 0.0				\$ 0.0
	Other			\$ 0.0				\$ 0.0
FY 2007-2009 Projected	State			\$ 500.0				\$ 850.0
	Federal			\$ 2,000.0				\$ 2,000.0
	Other			\$ 0.0				\$ 0.0
Total Projected	State			\$ 850.0	\$ 0.0			\$ 850.0
	Federal			\$ 2,000.0	\$ 0.0			\$ 2,000.0
	Other			\$ 0.0	\$ 0.0			\$ 0.0
Total All Funds		\$ 2,850.0	\$ 2,850.0	\$ 2,850.0	\$ 0.0	\$ 0.0	\$ 0.0	\$ 2,850.0

POSSUM PARK ROAD FROM POSSUM HOLLOW ROAD TO OLD POSSUM PARK ROAD (CONTINUED)**PROJECT TIMELINE INFORMATION**

Project #	Description	Phase	Funding Schedule	Current Estimate	Prior Years	FY 2003	FY 2004	FY 2005	FY 2006	FY 2007 -2009
23-044-01	Possum Park Road from Possum Hollow Road to Old Possum Park Road	PE	100% ST	\$ 250.0	\$ 0.0	\$ 0.0	\$ 250.0	\$ 0.0	\$ 0.0	\$ 0.0
		RW	100% ST	100.0	0.00	0.0	0.0	100.0	0.0	0.0
		C	80% FHWA	2,500.0	0.00	0.0	0.0	0.0	0.0	2,500.0
	Total All Funds			\$ 2,850.0	\$ 0.0	\$ 0.0	\$ 250.0	\$ 100.0	\$ 0.0	\$ 2,500.0

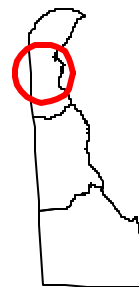
SOUTHERN NEW CASTLE COUNTY IMPROVEMENTS

PROJECT SCOPE/DESCRIPTION: The US301 Major Investment Study (MIS) encompasses the area from the Maryland line to US 13, and from I-95 to the area just south of Middletown. The study is complete and has been adopted by WILMAPCO. Options have been narrowed to multi-modal packages of improvements/expansions (transit, pedestrian, bicycle, minor and major roadways). The final, selected package of improvements will be phased in over the next 20 plus years and, depending on the alternative chosen, may include major road capacity increases. These could range from dualization of the existing US301 and SR896 (south of the Chesapeake and Delaware (C&D) canal) to a new four-lane limited-access highway between the Maryland line, SR 1 and I-95, as well as minor and major roadway expansion projects north of the C&D canal. An environmental impact statement will be prepared over the next three years, with subsequent review, coordination, and agreements with federal and state agencies, leading to location, design, and possible funding. Funding is available within this project allocation for improvements to the secondary road system in southern New Castle County, the first of which is Choptank Road (as noted in an earlier project within the Road System - Locals). Additional secondary road improvements will be identified through a joint study conducted by New Castle County and the department and funded as part of this project.



PROJECT JUSTIFICATION: Projects will be identified through the US301 Major Investment Study; the local roads plan being developed jointly by DelDOT and New Castle County; and the economic development effort to bring jobs south of the Chesapeake and Delaware Canal.

County:	New Castle
Municipality:	
Funding Program:	Road System – Locals
Functional Category:	Management
Representative District:	8, 9
Senatorial District:	10, 14



SOUTHERN NEW CASTLE COUNTY IMPROVEMENTS (CONTINUED)

PROJECT FUNDING INFORMATION

Project	Funding Type	Original Estimate	Current Estimate	Authorization	Committed as of 06/30/03	Expended as of 06/30/03	Committed Unexpended as of 06/30/03	Authorization Available
Southern New Castle County Improvements		\$ 49,878.8						
Prior Years	State			\$ 3,503.7	\$ 3,503.7	\$ 0.0	\$ 3,503.7	\$ 0.0
	Federal			\$ 3,153.1	\$ 3,153.1	\$ 0.0	\$ 3,153.1	\$ 0.0
	Other			\$ 0.0	\$ 0.0	\$ 0.0	\$ 0.0	\$ 0.0
FY 2003	State		\$ 49,878.4	\$ 0.0	\$ 0.0	\$ 0.0	\$ 0.0	\$ 0.0
	Federal			\$ 0.0	\$ 0.0	\$ 0.0	\$ 0.0	\$ 0.0
	Other			\$ 0.0	\$ 0.0	\$ 0.0	\$ 0.0	\$ 0.0
FY 2004 Authorized	State			\$ 2,948.4				\$ 2,948.4
	Federal			\$ 11,793.6				\$ 11,793.6
	Other			\$ 0.0				\$ 0.0
FY 2005 Projected	State			\$ 2,104.0				\$ 5,052.4
	Federal			\$ 8,416.0				\$ 20,209.6
	Other			\$ 0.0				\$ 0.0
FY 2006 Projected	State			\$ 1,197.3				\$ 6,249.7
	Federal			\$ 4,789.3				\$ 24,998.9
	Other			\$ 0.0				\$ 0.0
FY 2007-2009 Projected	State			\$ 2,394.6				\$ 8,644.3
	Federal			\$ 9,578.4				\$ 34,577.3
	Other			\$ 0.0				\$ 0.0
Total Projected	State			\$ 12,148.0	\$ 3,503.7			\$ 8,644.3
	Federal			\$ 37,730.4	\$ 3,153.1			\$ 34,577.3
	Other			\$ 0.0	\$ 0.0			\$ 0.0
Total All Funds		\$ 49,878.8	\$ 49,878.4	\$ 49,878.4	\$ 6,656.8	\$ 0.0	\$ 6,656.8	\$ 43,221.6

SOUTHERN NEW CASTLE COUNTY IMPROVEMENTS (CONTINUED)**PROJECT TIMELINE INFORMATION**

Project #	Description	Phase	Funding Schedule	Current Estimate	Prior Years	FY 2003	FY 2004	FY 2005	FY 2006	FY 2007 -2009
	Southern New Castle County Improvements									
88-113-01	US301 Corridor Studies	PLAN	100% ST	\$ 2,715.4	\$ 2,715.4	\$ 0.0	\$ 0.0	\$ 0.0	\$ 0.0	\$ 0.0
		PLAN	80% FHWA	3,941.4	3,941.38	0.0	0.0	0.0	0.0	0.0
21-120-02	Southern New Castle County Local Road Circulation Plan	PLAN	80% FHWA	43,221.7	0.00	0.0	14,742.0	10,520.0	5,986.7	11,973.0
	Total All Funds			\$ 49,878.4	\$ 6,656.8	\$ 0.0	\$ 14,742.0	\$ 10,520.0	\$ 5,986.7	\$ 11,973.0

WILMINGTON RIVERFRONT**PROJECT SCOPE/DESCRIPTION:**

A. **A Street Improvements** – This project provides streetscaping improvements on A Street between Market and Walnut Streets. Concepts include reconstructing of the existing roadway to an elevation approximately two feet higher than the existing roadway elevation, the addition of a brick and landscaped median, bump-outs to delineate on-street parking and enhanced entrance delineation. Brick sidewalks, lighting, ornamental signals and a keystone retaining wall along the south side of A Street to maintain access to the existing businesses are also included in this concept. The cost of undergrounding the aerial utilities along A Street is included.

B. **Bioswale Modification** – The goal of this project is to improve the aesthetics and function of the bio-filtration system adjacent to the Christina Riverwalk. This will be done using the latest techniques to achieve water quality standards and simultaneously keeping a pleasing landscape with cost effective maintenance.

C. **Browntown Pedestrian Walkway from Community Center to Stadium Area** - This project provides a critical pedestrian link from the nearby community to the Riverfront Arts Center, Frawley Stadium, and other Riverfront attractions. It will construct pathways that are safe for pedestrians and encourage more pedestrian, rather than vehicular, movement in the area. The community is presently separated from the Riverfront by railroad tracks and the I-95 Viaduct.

D. **Bulkhead Rehabilitation** – The goal of this project is to re-construct the old bulkhead of the Christina River's south bank between Market and Walnut Streets. This will facilitate the future economic development of the parcel bounded by the river, Market and Walnut Streets, and A Street.

E. **Riverwalk, South Market Street to South Walnut Street with Sidewalk Connections to Bridges** – This will include construction of a new riverwalk on the south side of the Christina River beginning at Market Street bridge with a pedestrian connection, continuing eastward with a 16' wide brick walkway, landscaping, lighting and an ornamental railing along the bulkhead to Walnut Street with a pedestrian connection to the Walnut Street bridge sidewalk.

F. **Riverwalk VIII, South of Shipyard Shops through Peterson Preserve** – The final portion of the Riverwalk will connect the Shipyard Shops to the Education Center at the Governor Peterson Wildlife Preserve. This provides pedestrian-friendly access to a wildlife refuge area and is consistent with the designs of previous Riverwalk phases.



WILMINGTON RIVERFRONT (CONTINUED)

- G. **Water Street East** – From its current terminus at French Street, Water Street will be extended along the south side of the Pennsylvania Building and along the east side of the Pennsylvania Building and Amtrak Train Station and connected to Front Street. Due to development plans to enclose the space between the Pennsylvania Building and Amtrak Train Station, this will provide fire safety access to the new structure and at the same time provide a public roadway for better overall access to the area.
- H. **Water Street West and Public Works** – This project’s focus will be the Riverfront area bounded by the Amtrak Northeast Corridor viaduct and the West Street Connector from Water Street to South Madison Street. The project will provide better access to properties, improve traffic flow, beautify the area and provide good pedestrian connections. The goal is to continue to encourage and stimulate economic growth as part of the Christian Riverfront re-development efforts.
- I. **Water Street West, Shipley Street to West Street** – This project will provide street trees, ornamental lighting, decorative sidewalks and paving to an area immediately adjacent to present and future development parcels at the Riverfront.
- J. **West Street Connector Extension** – This project will provide better access into Frawley Stadium and the interstate, as well as, provide the infrastructure to support the redevelopment of the Christina Riverfront.
- K. **West Street Connector Extension, Streetscape, South Madison to Stadium Drive** – This will provide streetscaping to the West Street Connector Extension project.



Wilmington Riverwalk’s North Side Of the Christina River

PROJECT JUSTIFICATION: The success of Wilmington’s redevelopment of this area depends on multi-modal transportation improvements. The Riverwalk provides a critical pedestrian link from the Wilmington Transit Center and Riverfront Park to riverfront attractions like Frawley Stadium, the Arts Center, Shipyard Shops, restaurants, and entertainment.

County: New Castle
Municipality: Wilmington
Funding Program: Road System – Locals
Functional Category: Management
Representative District: 2, 3, 16
Senatorial District: 2, 3



*WILMINGTON RIVERFRONT (CONTINUED)***PROJECT FUNDING INFORMATION**

Project	Funding Type	Original Estimate	Current Estimate	Authorization	Committed as of 06/30/03	Expended as of 06/30/03	Committed Unexpended as of 06/30/03	Authorization Available
Wilmington Riverfront		\$ 8,102.0						
Prior Years	State			\$ 17,767.0	\$ 7,183.8	\$ 4,410.0	\$ 2,773.8	\$ 10,583.2
	Federal			\$ 0.0	\$ 0.0	\$ 0.0	\$ 0.0	\$ 0.0
	Other			\$ 0.0	\$ 0.0	\$ 0.0	\$ 0.0	\$ 0.0
FY 2003	State		\$ 49,622.5	\$ 3,626.5	\$ 0.0	\$ 0.0	\$ 0.0	\$ 14,209.7
	Federal			\$ 0.0	\$ 0.0	\$ 0.0	\$ 0.0	\$ 0.0
	Other			\$ 0.0	\$ 0.0	\$ 0.0	\$ 0.0	\$ 0.0
FY 2004 Authorized	State			\$ 18,577.0				\$ 32,786.7
	Federal			\$ 0.0				\$ 0.0
	Other			\$ 0.0				\$ 0.0
FY 2005 Projected	State			\$ 6,052.0				\$ 38,838.7
	Federal			\$ 0.0				\$ 0.0
	Other			\$ 0.0				\$ 0.0
FY 2006 Projected	State			\$ 0.0				\$ 38,838.7
	Federal			\$ 0.0				\$ 0.0
	Other			\$ 0.0				\$ 0.0
FY 2007-2009 Projected	State			\$ 3,600.0				\$ 42,438.7
	Federal			\$ 0.0				\$ 0.0
	Other			\$ 0.0				\$ 0.0
Total Projected	State			\$ 49,622.5	\$ 7,183.8			\$ 42,438.7
	Federal			\$ 0.0	\$ 0.0			\$ 0.0
	Other			\$ 0.0	\$ 0.0			\$ 0.0
Total All Funds		\$ 8,102.0	\$ 49,622.5	\$ 49,622.5	\$ 7,183.8	\$ 4,410.0	\$ 2,773.8	\$ 42,438.7

WILMINGTON RIVERFRONT (CONTINUED)**PROJECT TIMELINE INFORMATION**

Project #	Description	Phase	Funding Schedule	Current Estimate	Prior Years	FY 2003	FY 2004	FY 2005	FY 2006	FY 2007 -2009
	Wilmington Riverfront									
	Program Development		100% ST	\$ 11,070.0	\$ 10,820.0	\$ 150.0	\$ 0.0	\$ 100.0	\$ 0.0	\$ 0.0
	A. A Street, South Market Street to South Walnut Street	PE	100% ST	200.0	200.0	0.0	0.0	0.0	0.0	0.0
		RW	100% ST	200.0	200.0	0.0	0.0	0.0	0.0	0.0
		C	100% ST	4,600.0	500.0	0.0	4,100.0	0.0	0.0	0.0
	B. Bioswale Modification	C	100% ST	750.0	500.0	0.0	250.0	0.0	0.0	0.0
22-121-02	C. Browntown Pedestrian Walkway from Community Center to Stadium Area	PE	100% ST	50.0	0.0	50.0	0.0	0.0	0.0	0.0
		ENV	100% ST	25.0	0.0	25.0	0.0	0.0	0.0	0.0
		RW	100% ST	25.0	0.0	25.0	0.0	0.0	0.0	0.0
		C	100% ST	1,125.0	0.0	1,125.0	0.0	0.0	0.0	0.0
24-121-01	D. Bulkhead Rehabilitation	C	100% ST	4,000.0	0.0	0.0	4,000.0	0.0	0.0	0.0
		ENV	100% ST	0.0	0.0	0.0	0.0	0.0	0.0	0.0
	E. Riverwalk, South Market Street to South Walnut Street with Sidewalk Connections to bridges	PE	100% ST	0.0	0.0	0.0	0.0	0.0	0.0	0.0
		RW	100% ST	0.0	0.0	0.0	0.0	0.0	0.0	0.0
		C	100% ST	3,150.0	1,173.0	0.0	1,977.0	0.0	0.0	0.0
20-121-01	F. Riverwalk VIII, South of Shipyard Shops through Peterson Preserve	PE	100% ST	800.0	0.0	0.0	0.0	0.0	0.0	800.0
		C	100% ST	2,800.0	0.0	0.0	0.0	0.0	0.0	2,800.0
23-121-01	G. Water Street East	PE	100% ST	0.0	0.0	0.0	0.0	0.0	0.0	0.0
		C	100% ST	4,876.5	1,371.5	2,255.0	1,250.0	0.0	0.0	0.0
	H. Water Street West and Public Works	C	100% ST	7,000.0	0.0	0.0	7,000.0	0.0	0.0	0.0
23-121-04	I. Water Street West, Shipley Street to West Street	PE	100% ST	300.0	300.0	0.0	0.0	0.0	0.0	0.0
		RW	100% ST	200.0	200.0	0.0	0.0	0.0	0.0	0.0
		C	100% ST	1,300.0	0.0	0.0	0.0	1,300.0	0.0	0.0

WILMINGTON RIVERFRONT (CONTINUED)**PROJECT TIMELINE INFORMATION**

Project #	Description	Phase	Funding Schedule	Current Estimate	Prior Years	FY 2003	FY 2004	FY 2005	FY 2006	FY 2007 -2009
	Wilmington Riverfront, Continued									
99-121-02	J. West Street Connector Extension	C	100% ST	4,001.0	2,499.0	0.0	0.0	1,502.0	0.0	0.0
	K. West Street Connector Extension Streetscape, South Madison to Stadium Drive	PE	100% ST	650.0	0.0	0.0	0.0	650.0	0.0	0.0
		RW	100% ST	250.0	0.0	0.0	0.0	250.0	0.0	0.0
		C	100% ST	2,250.0	0.0	0.0	0.0	2,250.0	0.0	0.0
	Total All Funds			\$ 49,622.5	\$ 17,763.5	\$ 3,630.0	\$ 18,577.0	\$ 6,052.0	\$ 0.0	3,600.0