

***SUPPORT SYSTEM  
TRANSIT  
FACILITIES***

**NEWARK TRANSIT HUB**

**PROJECT SCOPE/DESCRIPTION:** Funding was authorized to begin a study to select a site for the Newark Transit Hub. Future improvements may include a multi-modal facility including public streets, a bus transfer hub, public parking, park-and-ride, and a section of the planned Newark Pomeroy Bikeway, with appropriate pedestrian connections and landscaping.

**Bikeway:** The City of Newark is planning a bikeway along the former Pomeroy railroad line. This project will include construction of a section of bikeway between Delaware Avenue and Main Street. The proximity of the bikeway to DART bus service will enhance the functionality of both modes. The property planned for the transit hub will accommodate bicycle racks or lockers.

**Bus Transfer Hub:** DTC and the city desire to establish a transfer hub at which DART fixed-route buses would exchange passengers with a downtown Newark circulator to be established. This will remove the need for 40' buses to circulate through the Central Business District, reducing congestion and improving DART's running time and schedule adherence. Bus pull-offs on Farmer Lane and the Pomeroy will allow safe and convenient cross-platform transfers between routes, using an intervening property which will be developed with a shelter and passenger information displays. This location will also be used for bus layovers.

**Project Area:** The project area will be between Main Street and Delaware Avenue in Newark, New Castle County; incorporating the disused Pomeroy railroad right-of-way, Farmer Lane, and an intervening parcel.

**Public Parking/Park and Ride:** Adjacent to Farmers Lane is an existing public parking lot. With the addition of DART bus service this will function as park and ride.



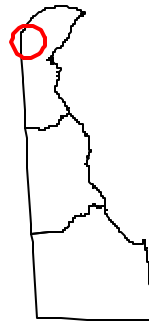
*Proposed Site for Newark Transit Hub*

**NEWARK TRANSIT HUB (CONTINUED)**

**Public Streets:** Farmer Lane was recently opened by the City of Newark as a one-way street southbound, from Main Street to Delaware Avenue. This is 100' to 140' east of the Pomeroy right-of-way. The city desires to establish a one-way northbound street on the Pomeroy and believes that this one-way pair will reduce traffic congestion in the area.

**PROJECT JUSTIFICATION:** A Newark Transit Hub is needed to coordinate different transit services; provide a transfer point for passengers; and provide a location for bus layovers. Transit in Newark will be coordinated with a circulator route that will provide frequent service between the hub, downtown, and the University of Delaware.

<b>County:</b>	New Castle
<b>Municipality:</b>	Newark
<b>Funding Program:</b>	Support System– Transit Facilities
<b>Functional Category:</b>	Management
<b>Representative District:</b>	23, 25
<b>Senatorial District:</b>	6



**NEWARK TRANSIT HUB (CONTINUED)****PROJECT FUNDING INFORMATION**

Project	Funding Type	Original Estimate	Current Estimate	Authorization	Committed as of 06/30/03	Expended as of 06/30/03	Committed Unexpended as of 06/30/03	Authorization Available
Newark Transit Hub		\$ 2,400.0						
Prior Years	State			\$ 0.0	\$ 0.0	\$ 0.0	\$ 0.0	\$ 0.0
	Federal			\$ 0.0	\$ 0.0	\$ 0.0	\$ 0.0	\$ 0.0
	Other			\$ 0.0	\$ 0.0	\$ 0.0	\$ 0.0	\$ 0.0
FY 2003	State		\$ 2,400.0	\$ 0.0	\$ 0.0	\$ 0.0	\$ 0.0	\$ 0.0
	Federal			\$ 0.0	\$ 0.0	\$ 0.0	\$ 0.0	\$ 0.0
	Other			\$ 0.0	\$ 0.0	\$ 0.0	\$ 0.0	\$ 0.0
FY 2004 Authorized	State			\$ 400.0				\$ 400.0
	Federal			\$ 1,600.0				\$ 1,600.0
	Other			\$ 0.0				\$ 0.0
FY 2005 Projected	State			\$ 0.0				\$ 400.0
	Federal			\$ 0.0				\$ 1,600.0
	Other			\$ 0.0				\$ 0.0
FY 2006 Projected	State			\$ 0.0				\$ 400.0
	Federal			\$ 0.0				\$ 1,600.0
	Other			\$ 0.0				\$ 0.0
FY 2007-2009 Projected	State			\$ 0.0				\$ 400.0
	Federal			\$ 0.0				\$ 1,600.0
	Other			\$ 0.0				\$ 0.0
Total Projected	State			\$ 400.0	\$ 0.0			\$ 400.0
	Federal			\$ 1,600.0	\$ 0.0			\$ 1,600.0
	Other			\$ 0.0	\$ 0.0			\$ 0.0
Total All Funds		\$ 2,400.0	\$ 2,400.0	\$ 2,000.0	\$ 0.0	\$ 0.0	\$ 0.0	\$ 2,000.0

**NEWARK TRANSIT HUB (CONTINUED)****PROJECT TIMELINE INFORMATION**

Project #	Description	Phase	Funding Schedule	Current Estimate	Prior Years	FY 2003	FY 2004	FY 2005	FY 2006	FY 2007 -2009
	<b>Newark Transit Hub</b>	PLAN	80% FHWA	\$ 100.0	\$ 0.0	\$ 100.0	\$ 0.0	\$ 0.0	\$ 0.0	\$ 0.0
		PE	100% ST	300.0	0.0	300.0	0.0	0.0	0.0	0.0
		RW / C	80% FTA	2,000.0	0.0	0.0	2,000.0	0.0	0.0	0.0
	Total All Funds			\$ 2,400.0	\$ 0.0	\$ 400.0	\$ 2,000.0	\$ 0.0	\$ 0.0	\$ 0.0

***TRANSIT FACILITIES***

**PROJECT DESCRIPTION:** Funding is requested for: 1) land acquisition, design and construction of facilities to house a portion of the Delaware Transit Corporation's New Castle County fixed route and paratransit operations, 2) improvements to the Amtrak train station in Wilmington, 3) increased parking for downtown Wilmington transit customers in the Riverfront area, 4) expanded Churchman's rail station parking, and 5) other minor facilities' preservation projects. Projects included are:

- A. **Churchman's Parking Garage** – This project involves the construction of a shared use parking garage at the Churchman's Crossing Rail Station to replace most of the existing parking spaces, in conjunction with public/private partnership with Parkside II. The parking garage will provide more efficient use of space near the station to support better transit usage and transit supportive land use.
- B. **Churchman's Rail Parking** – Increase Churchman's Crossing Station parking capacity and related amenities to support increased ridership at the rail station.
- C. **Consolidate Electric – DART III** – Purchase and renovation of the old Consolidated Electric building for additional office space to service the expanding transit service.
- D. **DART Headquarters** – This project will include a 210 car parking facility, museum bus drop-off area and public park along the riverfront and will provide a replacement site for the Madison Street Administration Building.
- E. **ING Riverfront Parking Garage** – This project will construct a two and a half story parking facility on the Water Street surface lot. It will provide over 400 parking spaces in a secure location adjacent to the Wilmington Train Station. The building will match the architecture of the historic Train Station and will also provide easy access and pedestrian amenities.
- F. **Madison Street** – Upgrade facilities to service expanding fleet.



***TRANSIT FACILITIES (CONTINUED)***

- G. **Mid-County** – Land acquisition, design and construction of a satellite facility to house a portion of Delaware Transit Corporation’s New Castle County fixed route and paratransit operations, including vehicle storage and maintenance.
- H. **Monroe Security** – Upgrade parking facility with security cameras, fences, gates, and swipe guards.
- I. **Wilmington Train Station** – This project will include major renovations to passenger amenities including the main entrance, restroom facilities and will improve access for persons with disabilities. The project will update the facility from the 1893 layout and components to improve functionality and be complementary with surrounding commercial development. Funding has been authorized and additional discretionary funding is being sought to upgrade the Wilmington Train Station. Prior year Transit Rail Preservation funding for AMTRAK Station Improvements totaling \$3,471 million was consolidated with FY 2004 Support System Transit Facilities request for consistent project tracking.
- J. **Wilmington Transit Center (Porter)** – Land purchase, design and construction of a transit facility on the existing Porter property adjacent to the Wilmington Train Station. This facility will incorporate facilities for inter and intra-city bus including boarding areas, baggage handling, ticketing and complimentary commercial activities.

**PROJECT JUSTIFICATION:** These projects will provide satellite facilities located in New Castle County for paratransit and fixed route bus operations, maintenance, and storage and will increase and preserve Wilmington rail station and area parking.

**County:** New Castle  
**Municipality:**  
**Funding Program:** Support System – Transit Facilities  
**Functional Category:** Expansion/Preservation  
**Representative District:**  
**Senatorial District:**

**TRANSIT FACILITIES (CONTINUED)**

*Consolidated Electric – DART III Site Building renovations*



*Porter Site*



*Mid County Transit Facilities' Sites*



*Amtrak Station*





**TRANSIT FACILITIES (CONTINUED)****PROJECT FUNDING INFORMATION**

Project	Funding Type	Original Estimate	Current Estimate	Authorization	Committed as of 06/30/03	Expended as of 06/30/03	Committed Unexpended as of 06/30/03	Authorization Available
Transit Facilities		\$ 50,048.4						
Prior Years	State			\$ 43,902.9	\$ 43,902.9	\$ 37,966.0	\$ 5,936.9	\$ 0.0
	Federal			\$ 4,197.5	\$ 0.0	\$ 0.0	\$ 0.0	\$ 4,197.5
	Other			\$ 0.0	\$ 0.0	\$ 0.0	\$ 0.0	\$ 0.0
FY 2003	State		\$ 101,546.4	\$ 20,114.5	\$ 16,877.1	\$ 0.0	\$ 16,877.1	\$ 3,237.4
	Federal			\$ 985.5	\$ 0.0	\$ 0.0	\$ 0.0	\$ 5,183.0
	Other			\$ 0.0	\$ 0.0	\$ 0.0	\$ 0.0	\$ 0.0
FY 2004 Authorized	State			\$ 11,798.5				\$ 15,035.9
	Federal			\$ 4,401.5				\$ 9,584.5
	Other			\$ 0.0				\$ 0.0
FY 2005 Projected	State			\$ 4,146.0				\$ 19,181.9
	Federal			\$ 12,000.0				\$ 21,584.5
	Other			\$ 0.0				\$ 0.0
FY 2006 Projected	State			\$ 0.0				\$ 19,181.9
	Federal			\$ 0.0				\$ 21,584.5
	Other			\$ 0.0				\$ 0.0
FY 2007-2009 Projected	State			\$ 0.0				\$ 19,181.9
	Federal			\$ 0.0				\$ 21,584.5
	Other			\$ 0.0				\$ 0.0
Total Projected	State			\$ 79,961.9	\$ 60,780.0			\$ 19,181.9
	Federal			\$ 21,584.5	\$ 0.0			\$ 21,584.5
	Other			\$ 0.0	\$ 0.0			\$ 0.0
Total All Funds		\$ 50,048.4	\$ 101,546.4	\$ 101,546.4	\$ 60,780.0	\$ 37,966.0	\$ 22,814.0	\$ 40,766.4

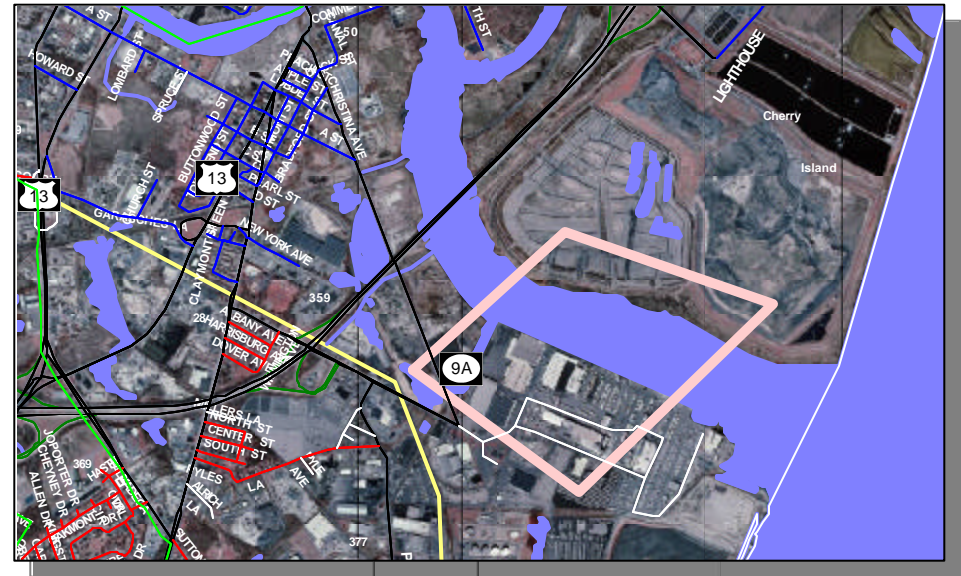
**TRANSIT FACILITIES (CONTINUED)****PROJECT TIMELINE INFORMATION**

Project #	Description	Phase	Funding Schedule	Current Estimate	Prior Years	FY 2003	FY 2004	FY 2005	FY 2006	FY 2007 -2009
	<b>Transit Facilities</b>									
99-512-01	A. Churchman's Parking Garage	PE, RW, C	100% ST	\$ 10,000.0	\$ 8,854.0	\$ 0.0	\$ 0.0	\$ 1,146.0	\$ 0.0	\$ 0.0
	B. Churchman's Rail Parking	PE, RW, C	100% ST	22,276.0	21,776.0	0.0	500.0	0.0	0.0	0.0
22-502-01	C. Consolidated Electric DART III (paratransit maintenance facility)	PE, RW, C	100% ST	2,600.0	2,500.0	0.0	100.0	0.0	0.0	0.0
23-531-03	D. DART Headquarters	PE, RW	100% ST	5,300.0	0.0	3,800.0	1,500.0	0.0	0.0	0.0
		C	80% FTA	7,500.0	0.0	0.0	0.0	7,500.0	0.0	0.0
		C	80% DISC FTA	7,500.0	0.0	0.0	0.0	7,500.0	0.0	0.0
	E. ING Riverfront Parking Garage	PE, RW, C	100% ST	8,300.0	0.0	7,500.0	800.0	0.0	0.0	0.0
	F. Madison Street	PE, RW, C	100% ST	3,800.0	0.0	3,800.0	0.0	0.0	0.0	0.0
	G. Mid County Facility	PE, RW, C	37% FTA	15,300.0	11,500.0	2,700.0	1,100.0	0.0	0.0	0.0
	H. Monroe Security	PE, RW, C	100% ST	300.0	0.0	300.0	0.0	0.0	0.0	0.0
	I. Train Station	PE, RW, C	100% ST	3,470.4	3,470.4	0.0	0.0	0.0	0.0	0.0
			100% DISC FTA	4,000.0	0.0	0.0	4,000.0	0.0	0.0	0.0
	J. Wilmington Transit Center (Porter site- Wilmington bus staging)	PE, RW, C	100% ST	11,200.0	0.0	3,000.0	8,200.0	0.0	0.0	0.0
		PE, RW, C	100% ST	0.0	0.0	0.0	0.0	0.0	0.0	0.0
	Total All Funds			\$ 101,546.4	\$ 48,100.4	\$ 21,100.0	\$ 16,200.0	\$ 16,146.0	\$ 0.0	\$ 0.0

**PORT OF WILMINGTON**

**PROJECT SCOPE/DESCRIPTION:** The sum of \$5,015,000 appropriated in the Section 1 Addendum to the FY 2004 State Legislative Bond Bill will be transferred from the General Fund to the Transportation Trust Fund and used only for the following investments at the Port of Wilmington:

- \$15,000 for ergonomically approved cushions and other devices to be added to such equipment at the Port as the Port’s Executive Director may find necessary in order to provide continuing employment opportunities to individuals suffering from physical injuries, and without such devices, would be unable to continue serving as active members of the Port’s workforce.
- \$5,000,000 for various improvements deemed necessary to provide a long-term benefit to the Port and to the State of Delaware by retaining existing customers and/or attracting new revenue paying customers to the Port. No funds may be expended from this appropriation without a duly adopted Resolution of the Board of the Diamond State Port Corporation. Any funds authorized, but not encumbered or spent, from this appropriation by June 30, 2005, shall revert from the Transportation Trust Fund to the General Fund of the State.



**PROJECT JUSTIFICATION:** This investment at the Port of Wilmington will continue the State of Delaware’s efforts to promote economic development.

**County:** New Castle  
**Municipality:** Wilmington  
**Funding Program:** Support Systems  
**Functional Category:**  
**Representative District:** 2, 16  
**Senatorial District:** 2



*PORT OF WILMINGTON (CONTINUED)*

**PROJECT FUNDING INFORMATION**

Project	Funding Type	Original Estimate	Current Estimate	Authorization	Committed as of 06/30/03	Expended as of 06/30/03	Committed Unexpended as of 06/30/03	Authorization Available
Port of Wilmington		\$ 0.0						
Prior Years	State			\$ 0.0	\$ 0.0	\$ 0.0	\$ 0.0	\$ 0.0
	Federal			\$ 0.0	\$ 0.0	\$ 0.0	\$ 0.0	\$ 0.0
	Other			\$ 0.0	\$ 0.0	\$ 0.0	\$ 0.0	\$ 0.0
FY 2003	State		\$ 5,015.0	\$ 0.0	\$ 0.0	\$ 0.0	\$ 0.0	\$ 0.0
	Federal			\$ 0.0	\$ 0.0	\$ 0.0	\$ 0.0	\$ 0.0
	Other			\$ 0.0	\$ 0.0	\$ 0.0	\$ 0.0	\$ 0.0
FY 2004 Authorized	State			\$ 5,015.0				\$ 5,015.0
	Federal			\$ 0.0				\$ 0.0
	Other			\$ 0.0				\$ 0.0
FY 2005 Projected	State			\$ 0.0				\$ 5,015.0
	Federal			\$ 0.0				\$ 0.0
	Other			\$ 0.0				\$ 0.0
FY 2006 Projected	State			\$ 0.0				\$ 5,015.0
	Federal			\$ 0.0				\$ 0.0
	Other			\$ 0.0				\$ 0.0
FY 2007-2009 Projected	State			\$ 0.0				\$ 5,015.0
	Federal			\$ 0.0				\$ 0.0
	Other			\$ 0.0				\$ 0.0
Total Projected	State			\$ 5,015.0	\$ 0.0			\$ 5,015.0
	Federal			\$ 0.0	\$ 0.0			\$ 0.0
	Other			\$ 0.0	\$ 0.0			\$ 0.0
Total All Funds		\$ 0.0	\$ 5,015.0	\$ 5,015.0	\$ 0.0	\$ 0.0	\$ 0.0	\$ 5,015.0

**PORT OF WILMINGTON (CONTINUED)****PROJECT TIMELINE INFORMATION**

Project #	Description	Phase	Funding Schedule	Current Estimate	Prior Years	FY 2003	FY 2004	FY 2005	FY 2006	FY 2007 -2009
	<b>Port of Wilmington</b>	PRO, MGT	100% ST	\$ 5,015.0	\$ 0.0	\$ 0.0	\$ 5,015.0	\$ 0.0	\$ 0.0	\$ 0.0
	Total All Funds			\$ 5,015.0	\$ 0.0	\$ 0.0	\$ 5,015.0	\$ 0.0	\$ 0.0	\$ 0.0