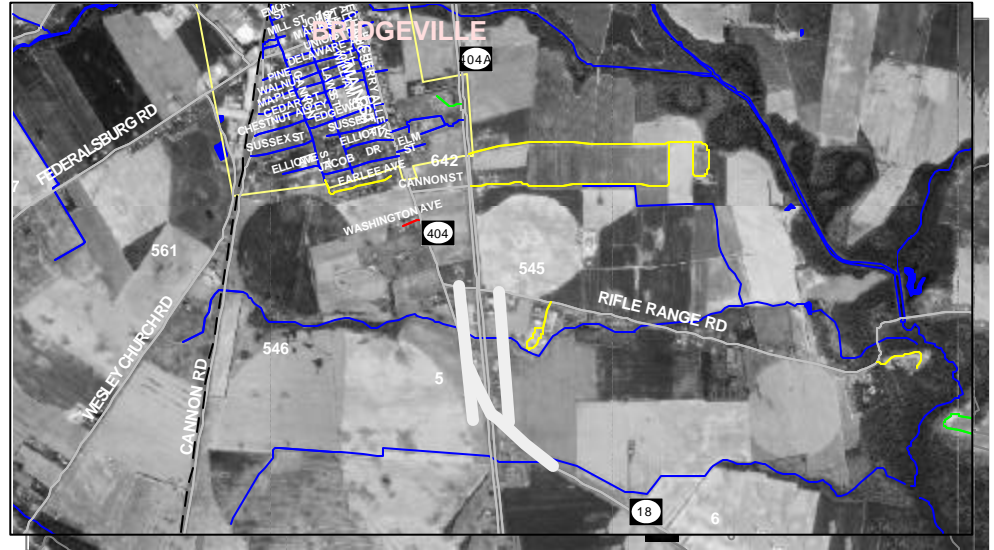


US 13, BRIDGEVILLE SERVICE ROADS

PROJECT SCOPE/DESCRIPTION: This project involves the realignment of the US 13 and North Main Street (SR404) intersection to form a perpendicular intersection. The realignment will eliminate the skew and add turn lanes at this intersection. Further, this project will construct parallel service roads on both sides of US 13 (from Rifle Range Road (S545) to SR404) at this intersection.

PROJECT JUSTIFICATION: This realignment will improve both flow and safety at this intersection. The service roads will help reduce traffic congestion and preserve capacity along the US 13 corridor.



County:	Sussex
Municipality:	Bridgeville
Funding Program:	Road System – Collectors
Functional Category:	Management
Representative District:	35
Senatorial District:	19



US 13, BRIDGEVILLE SERVICE ROADS (CONTINUED)**PROJECT FUNDING INFORMATION**

Project	Funding Type	Original Estimate	Current Estimate	Authorization	Committed as of 06/30/03	Expended as of 06/30/03	Committed Unexpended as of 06/30/03	Authorization Available
US 13, Bridgeville Service Roads		\$ 13,549.0						
Prior Years	State			\$ 2,076.5	\$ 2,076.5	\$ 12.3	\$ 2,064.1	\$ 0.0
	Federal			\$ 134.1	\$ 134.1	\$ 0.0	\$ 134.1	\$ 0.0
	Other			\$ 0.0	\$ 0.0	\$ 0.0	\$ 0.0	\$ 0.0
FY 2003	State		\$ 14,449.0	\$ 38.4	\$ 38.4	\$ 0.0	\$ 38.4	\$ 0.0
	Federal			\$ 0.0	\$ 0.0	\$ 0.0	\$ 0.0	\$ 0.0
	Other			\$ 0.0	\$ 0.0	\$ 0.0	\$ 0.0	\$ 0.0
FY 2004 Authorized	State			\$ 1,000.0				\$ 1,000.0
	Federal			\$ 0.0				\$ 0.0
	Other			\$ 0.0				\$ 0.0
FY 2005 Projected	State			\$ 2,240.0				\$ 3,240.0
	Federal			\$ 8,960.0				\$ 8,960.0
	Other			\$ 0.0				\$ 0.0
FY 2006 Projected	State			\$ 0.0				\$ 3,240.0
	Federal			\$ 0.0				\$ 8,960.0
	Other			\$ 0.0				\$ 0.0
FY 2007-2009 Projected	State			\$ 0.0				\$ 3,240.0
	Federal			\$ 0.0				\$ 8,960.0
	Other			\$ 0.0				\$ 0.0
Total Projected	State			\$ 5,354.9	\$ 2,114.9			\$ 3,240.0
	Federal			\$ 9,094.1	\$ 134.1			\$ 8,960.0
	Other			\$ 0.0	\$ 0.0			\$ 0.0
Total All Funds		\$ 13,549.0	\$ 14,449.0	\$ 14,449.0	\$ 2,249.0	\$ 12.3	\$ 2,236.7	\$ 12,200.0

US 13, BRIDGEVILLE SERVICE ROADS (CONTINUED)**PROJECT TIMELINE INFORMATION**

Project #	Description	Phase	Funding Schedule	Current Estimate	Prior Years	FY 2003	FY 2004	FY 2005	FY 2006	FY 2007 -2009
	US 13, Bridgeville Service Roads									
22-124-06	US 13, Bridgeville Service Roads	PE	100% ST	\$ 1,100.0	\$ 1,000.0	\$ 100.0	\$ 0.0	\$ 0.0	\$ 0.0	\$ 0.0
		RW	100% ST	2,000.0	1,000.0	0.0	1,000.0	0.0	0.0	0.0
		C	80% FHWA	11,200.0	0.0	0.0	0.0	11,200.0	0.0	0.0
20-009-01	US 13 / SR404 Left Turn Channelization - HSIP Project	C	90% FHWA	149.0	149.0	0.0	0.0	0.0	0.0	0.0
	Total All Funds			\$ 14,449.0	\$ 2,149.0	\$ 100.0	\$ 1,000.0	\$ 11,200.0	\$ 0.0	\$ 0.0

US 13, DELMAR SERVICE ROAD

PROJECT SCOPE/DESCRIPTION: This project consists of the construction of a connector road from US 13 to Old Stage Road (S 68) and median improvements along US 13 including removal of the existing left-turn lane and crossover into State Line Plaza; adding left-turn lanes; channelizing the crossover at Delmar Business Park; and channelization of the crossover north of Delmar Business Park.

PROJECT JUSTIFICATION: The connector road will create/enhance the local road network by creating access between properties without the use of US 13. The intersection and median improvements will improve access management and circulation for developments along US 13.



County:	Sussex
Municipality:	Delmar
Funding Program:	Road System – Collectors
Functional Category:	Management
Representative District:	40
Senatorial District:	21



US 13, DELMAR SERVICE ROAD (CONTINUED)

PROJECT FUNDING INFORMATION

Project	Funding Type	Original Estimate	Current Estimate	Authorization	Committed as of 06/30/03	Expended as of 06/30/03	Committed Unexpended as of 06/30/03	Authorization Available
US 13, Delmar Service Road		\$ 1,371.0						
Prior Years	State			\$ 1,000.0	\$ 409.1	\$ 60.3	\$ 348.7	\$ 590.9
	Federal			\$ 0.0	\$ 0.0	\$ 0.0	\$ 0.0	\$ 0.0
	Other			\$ 0.0	\$ 0.0	\$ 0.0	\$ 0.0	\$ 0.0
FY 2003	State		\$ 1,371.0	\$ 371.0	\$ 0.0	\$ 0.0	\$ 0.0	\$ 961.9
	Federal			\$ 0.0	\$ 0.0	\$ 0.0	\$ 0.0	\$ 0.0
	Other			\$ 0.0	\$ 0.0	\$ 0.0	\$ 0.0	\$ 0.0
FY 2004 Authorized	State			\$ 0.0				\$ 961.9
	Federal			\$ 0.0				\$ 0.0
	Other			\$ 0.0				\$ 0.0
FY 2005 Projected	State			\$ 0.0				\$ 961.9
	Federal			\$ 0.0				\$ 0.0
	Other			\$ 0.0				\$ 0.0
FY 2006 Projected	State			\$ 0.0				\$ 961.9
	Federal			\$ 0.0				\$ 0.0
	Other			\$ 0.0				\$ 0.0
FY 2007-2009 Projected	State			\$ 0.0				\$ 961.9
	Federal			\$ 0.0				\$ 0.0
	Other			\$ 0.0				\$ 0.0
Total Projected	State			\$ 1,371.0	\$ 409.1			\$ 961.9
	Federal			\$ 0.0	\$ 0.0			\$ 0.0
	Other			\$ 0.0	\$ 0.0			\$ 0.0
Total All Funds		\$ 1,371.0	\$ 1,371.0	\$ 1,371.0	\$ 409.1	\$ 60.3	\$ 348.7	\$ 961.9

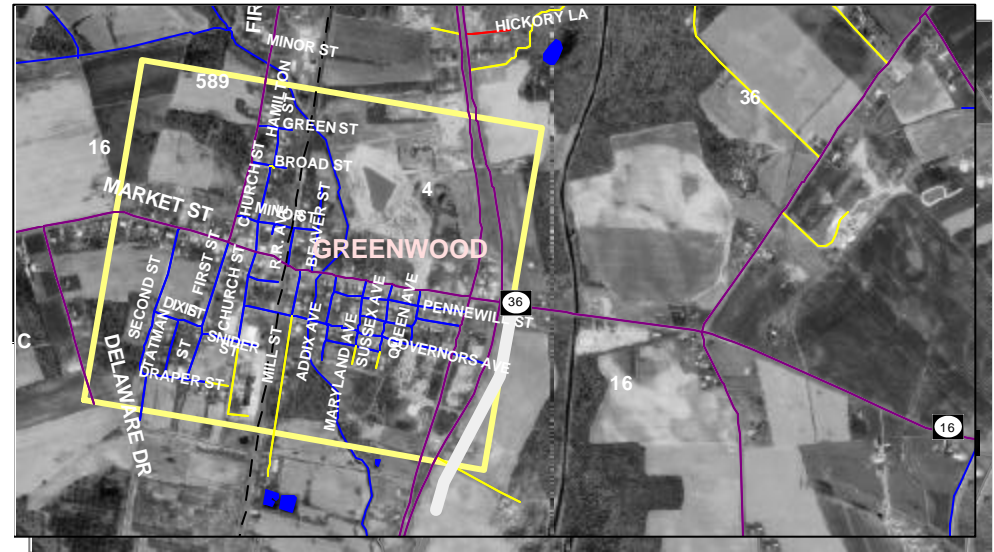
*US 13, DELMAR SERVICE ROAD (CONTINUED)***PROJECT TIMELINE INFORMATION**

Project #	Description	Phase	Funding Schedule	Current Estimate	Prior Years	FY 2003	FY 2004	FY 2005	FY 2006	FY 2007 -2009
22-124-03	US 13, Delmar Service Road	PE, RW, C	100% ST	\$ 1,000.0	\$ 1,000.0	\$ 0.0	\$ 0.0	\$ 0.0	\$ 0.0	\$ 0.0
		RW	100% ST	371.0	0.0	371.0	0.0	0.0	0.0	0.0
	Total All Funds			\$ 1,371.0	\$ 1,000.0	\$ 371.0	\$ 0.0	\$ 0.0	\$ 0.0	\$ 0.0

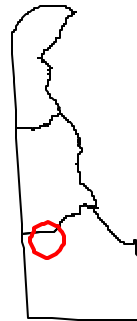
US 13, GREENWOOD SERVICE ROAD

PROJECT SCOPE/DESCIRPTION: This project includes the construction of a service road parallel to US 13, from south of the CHEER Center to SR 16.

PROJECT JUSTIFICATION: This road will provide alternate access for the multiple planned developments along US 13 and improve the local road network to help preserve the capacity on US 13 to function as a regional arterial highway.



County:	Sussex
Municipality:	Greenwood
Funding Program:	Road System – Collectors
Functional Category:	Management
Representative District:	35
Senatorial District:	19



US 13, GREENWOOD SERVICE ROAD (CONTINUED)

PROJECT FUNDING INFORMATION

Project	Funding Type	Original Estimate	Current Estimate	Authorization	Committed as of 06/30/03	Expended as of 06/30/03	Committed Unexpended as of 06/30/03	Authorization Available
US 13, Greenwood Service Road		\$ 2,443.2						
Prior Years	State			\$ 2,338.2	\$ 2,338.2	\$ 0.0	\$ 2,338.2	\$ 0.0
	Federal			\$ 0.0	\$ 0.0	\$ 0.0	\$ 0.0	\$ 0.0
	Other			\$ 0.0	\$ 0.0	\$ 0.0	\$ 0.0	\$ 0.0
FY 2003	State		\$ 2,443.2	\$ 105.0	\$ 105.0	\$ 0.0	\$ 105.0	\$ 0.0
	Federal			\$ 0.0	\$ 0.0	\$ 0.0	\$ 0.0	\$ 0.0
	Other			\$ 0.0	\$ 0.0	\$ 0.0	\$ 0.0	\$ 0.0
FY 2004 Authorized	State			\$ 0.0				\$ 0.0
	Federal			\$ 0.0				\$ 0.0
	Other			\$ 0.0				\$ 0.0
FY 2005 Projected	State			\$ 0.0				\$ 0.0
	Federal			\$ 0.0				\$ 0.0
	Other			\$ 0.0				\$ 0.0
FY 2006 Projected	State			\$ 0.0				\$ 0.0
	Federal			\$ 0.0				\$ 0.0
	Other			\$ 0.0				\$ 0.0
FY 2007-2009 Projected	State			\$ 0.0				\$ 0.0
	Federal			\$ 0.0				\$ 0.0
	Other			\$ 0.0				\$ 0.0
Total Projected	State			\$ 2,443.2	\$ 2,443.2			\$ 0.0
	Federal			\$ 0.0	\$ 0.0			\$ 0.0
	Other			\$ 0.0	\$ 0.0			\$ 0.0
Total All Funds		\$ 2,443.2	\$ 2,443.2	\$ 2,443.2	\$ 2,443.2	\$ 0.0	\$ 2,443.2	\$ 0.0

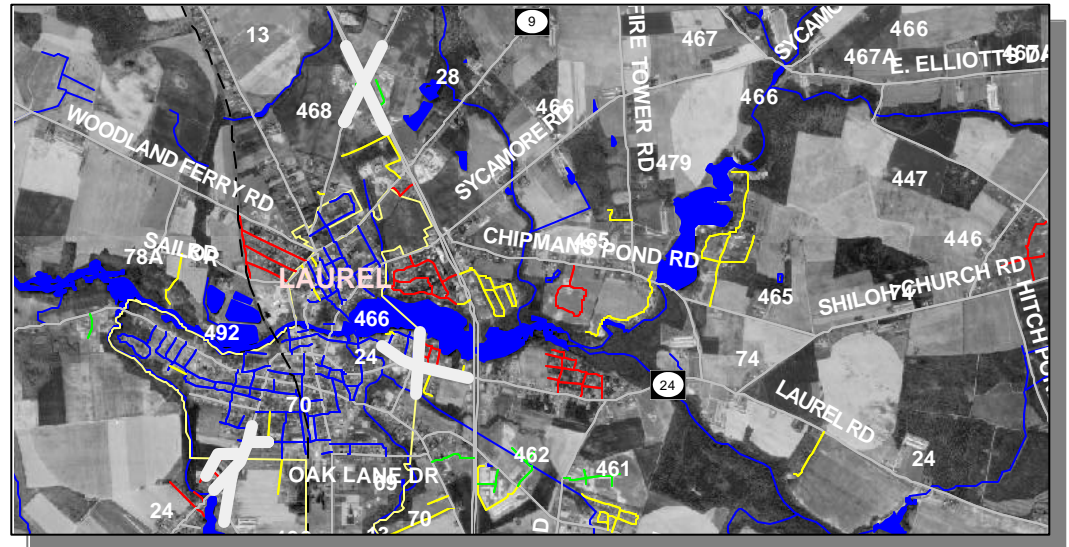
US 13, GREENWOOD SERVICE ROAD (CONTINUED)**PROJECT TIMELINE INFORMATION**

Project #	Description	Phase	Funding Schedule	Current Estimate	Prior Years	FY 2003	FY 2004	FY 2005	FY 2006	FY 2007 -2009
22-124-05	US 13, Greenwood Service Road	PE,C	100% ST	\$ 2,338.2	\$ 2,338.2	\$ 0.0	\$ 0.0	\$ 0.0	\$ 0.0	\$ 0.0
		RW	100% ST	105.0	0.0	105.0	0.0	0.0	0.0	0.0
	Total All Funds			\$ 2,443.2	\$ 2,338.2	\$ 105.0	\$ 0.0	\$ 0.0	\$ 0.0	\$ 0.0

US 13, LAUREL INTERSECTIONS IMPROVEMENTS

PROJECT SCOPE/DESCRIPTION: The Laurel intersections improvements are comprised of three projects listed below:

- A. **Laurel Five Points** – This project includes adding curbing (Brooklyn Avenue to US 9 on both sides of the roadway and at each of the corners at the intersection); adding landscaping north of Brooklyn Avenue where striping currently exists; adding/replacing sidewalk at the intersection; increasing the turning radius from northbound Central Avenue onto eastbound Georgetown Road; and increasing the turning radius from southbound Central Avenue onto Woodland Ferry Road. Minimal right-of-way will be required, and there will be two utility relocations and two signal pole relocations.
- B. **US 13 and Discount Land Road (S468)** – This project includes median channelization at the intersection of US 13 and Discount Land Road north of Laurel. The work will involve: 1) adding concrete islands to channelize the left-turn movement from US 13 onto Discount Land Road; and 2) resurfacing on Discount Land Road 200’ from US 13 along both approaches. All work will take place within the existing right-of-way, and there will be no drainage improvements or utility relocations.
- C. **US 13, Laurel Intersection Improvements** – This project consists of increasing the length of the existing right-turn lanes on eastbound and westbound approaches of US 9; adding left-turn lanes on the eastbound and westbound approaches of Delaware Avenue (S466); and removing split phasing from the signal, as well as adding left-turn lanes on the eastbound and westbound approaches of SR 24.



PROJECT JUSTIFICATION: These intersection improvements will provide additional corridor capacity and improve safety in all the locations. The work at Five Points was recommended improvements from the Laurel Truck Route Study.

County:	Sussex
Municipality:	Laurel
Funding Program:	Road System – Collectors
Functional Category:	Management
Representative District:	40
Senatorial District:	21



US 13, LAUREL INTERSECTIONS IMPROVEMENTS (CONTINUED)

PROJECT FUNDING INFORMATION

Project	Funding Type	Original Estimate	Current Estimate	Authorization	Committed as of 06/30/03	Expended as of 06/30/03	Committed Unexpended as of 06/30/03	Authorization Available
US 13, Laurel Intersections Improvements		\$ 2,286.0						
Prior Years	State			\$ 1,061.4	\$ 1,061.4	\$ 107.5	\$ 953.9	\$ 0.0
	Federal			\$ 0.0	\$ 0.0	\$ 0.0	\$ 0.0	\$ 0.0
	Other			\$ 0.0	\$ 0.0	\$ 0.0	\$ 0.0	\$ 0.0
FY 2003	State		\$ 2,557.0	\$ 406.0	\$ 406.0	\$ 0.0	\$ 406.0	\$ 0.0
	Federal			\$ 0.0	\$ 0.0	\$ 0.0	\$ 0.0	\$ 0.0
	Other			\$ 0.0	\$ 0.0	\$ 0.0	\$ 0.0	\$ 0.0
FY 2004 Authorized	State			\$ 0.0				\$ 0.0
	Federal			\$ 1,089.6				\$ 1,089.6
	Other			\$ 0.0				\$ 0.0
FY 2005 Projected	State			\$ 0.0				\$ 0.0
	Federal			\$ 0.0				\$ 1,089.6
	Other			\$ 0.0				\$ 0.0
FY 2006 Projected	State			\$ 0.0				\$ 0.0
	Federal			\$ 0.0				\$ 1,089.6
	Other			\$ 0.0				\$ 0.0
FY 2007-2009 Projected	State			\$ 0.0				\$ 0.0
	Federal			\$ 0.0				\$ 1,089.6
	Other			\$ 0.0				\$ 0.0
Total Projected	State			\$ 1,467.4	\$ 1,467.4			\$ 0.0
	Federal			\$ 1,089.6	\$ 0.0			\$ 1,089.6
	Other			\$ 0.0	\$ 0.0			\$ 0.0
Total All Funds		\$ 2,286.0	\$ 2,557.0	\$ 2,557.0	\$ 1,467.4	\$ 107.5	\$ 1,359.9	\$ 1,089.6

US 13, LAUREL INTERSECTIONS IMPROVEMENTS (CONTINUED)**PROJECT TIMELINE INFORMATION**

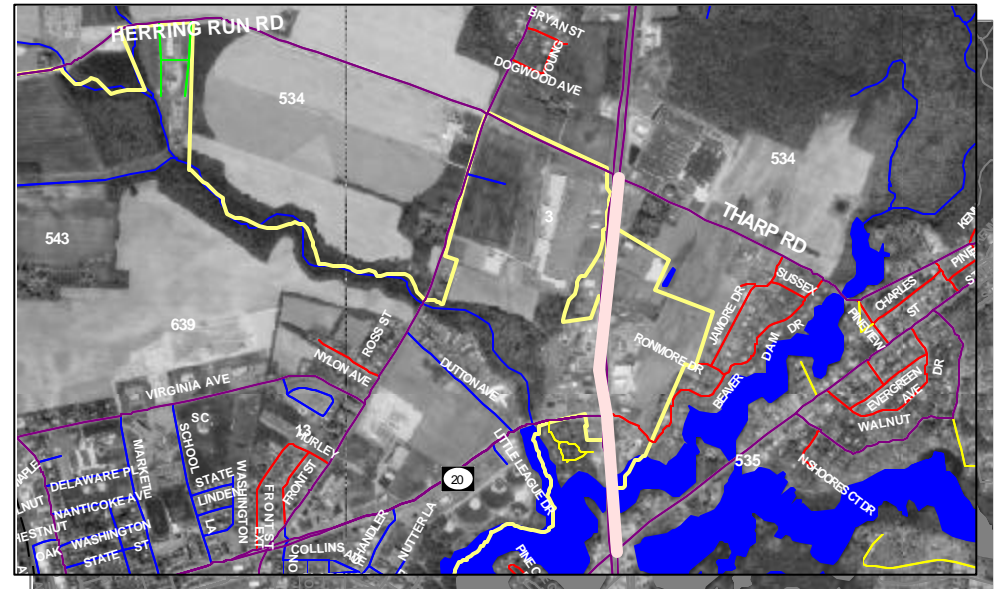
Project #	Description	Phase	Funding Schedule	Current Estimate	Prior Years	FY 2003	FY 2004	FY 2005	FY 2006	FY 2007 -2009
	US 13, Laurel Intersections Improvements	PE, RW, C	100% ST	\$ 450.0	\$ 450.0	\$ 0.0	\$ 0.0	\$ 0.0	\$ 0.0	\$ 0.0
		PE	100% ST	20.0	0.0	20.0	0.0	0.0	0.0	0.0
22-124-02	A. Laurel Five-Points	PE/RW	100% ST	137.0	0.0	137.0	0.0	0.0	0.0	0.0
		C	80% FHWA	423.0	0.0	0.0	423.0	0.0	0.0	0.0
22-124-02	B. US 13 and Discount Road (S468)	PE	100% ST	0.0	0.0	0.0	0.0	0.0	0.0	0.0
		C	80% FHWA	271.0	0.0	0.0	271.0	0.0	0.0	0.0
22-124-04	C. US 13, Laurel Intersections Improvements	PE	100% ST	339.0	339.0	0.0	0.0	0.0	0.0	0.0
		RW	100% ST	249.0	0.0	249.0	0.0	0.0	0.0	0.0
		C	80% FHWA	668.0	0.0	0.0	668.0	0.0	0.0	0.0
	Total All Funds			\$ 2,557.0	\$ 789.0	\$ 406.0	\$ 1,362.0	\$ 0.0	\$ 0.0	\$ 0.0

US 13, SEAFORD INTERSECTION IMPROVEMENTS

PROJECT SCOPE/DESCRIPTION: This project consists of US 13 intersection improvements at S534 (Herring Run Road/Tharp Road), SR 20 (Stein Highway), S535 (Middleford Road), and S 20 (Concord Road). The improvements include modifications to the signal timing/phasing and addition of separate right-turn lanes or through lanes at these intersections.

PROJECT JUSTIFICATION: The intersection improvements will provide additional capacity and improve safety at these locations.

County:	Sussex
Municipality:	Seaford
Funding Program:	Road System – Collectors
Functional Category:	Management
Representative District:	39
Senatorial District:	19, 21



US 13, SEAFORD INTERSECTION IMPROVEMENTS (CONTINUED)

PROJECT FUNDING INFORMATION

Project	Funding Type	Original Estimate	Current Estimate	Authorization	Committed as of 06/30/03	Expended as of 06/30/03	Committed Unexpended as of 06/30/03	Authorization Available
US 13, Seaford Intersection Improvements		\$ 4,771.0						
Prior Years	State			\$ 2,265.0	\$ 2,265.0	\$ 49.6	\$ 2,215.4	\$ 0.0
	Federal			\$ 0.0	\$ 0.0	\$ 0.0	\$ 0.0	\$ 0.0
	Other			\$ 0.0	\$ 0.0	\$ 0.0	\$ 0.0	\$ 0.0
FY 2003	State		\$ 4,771.0	\$ 846.0	\$ 381.0	\$ 0.0	\$ 381.0	\$ 465.0
	Federal			\$ 0.0	\$ 0.0	\$ 0.0	\$ 0.0	\$ 0.0
	Other			\$ 0.0	\$ 0.0	\$ 0.0	\$ 0.0	\$ 0.0
FY 2004 Authorized	State			\$ 0.0				\$ 465.0
	Federal			\$ 1,660.0				\$ 1,660.0
	Other			\$ 0.0				\$ 0.0
FY 2005 Projected	State			\$ 0.0				\$ 465.0
	Federal			\$ 0.0				\$ 1,660.0
	Other			\$ 0.0				\$ 0.0
FY 2006 Projected	State			\$ 0.0				\$ 465.0
	Federal			\$ 0.0				\$ 1,660.0
	Other			\$ 0.0				\$ 0.0
FY 2007-2009 Projected	State			\$ 0.0				\$ 465.0
	Federal			\$ 0.0				\$ 1,660.0
	Other			\$ 0.0				\$ 0.0
Total Projected	State			\$ 3,111.0	\$ 2,646.0			\$ 465.0
	Federal			\$ 1,660.0	\$ 0.0			\$ 1,660.0
	Other			\$ 0.0	\$ 0.0			\$ 0.0
Total All Funds		\$ 4,771.0	\$ 4,771.0	\$ 4,771.0	\$ 2,646.0	\$ 49.6	\$ 2,596.4	\$ 2,125.0

US 13, SEAFORD INTERSECTION IMPROVEMENTS (CONTINUED)**PROJECT TIMELINE INFORMATION**

Project #	Description	Phase	Funding Schedule	Current Estimate	Prior Years	FY 2003	FY 2004	FY 2005	FY 2006	FY 2007 -2009
	US 13, Seaford Intersection Improvements									
	US 13, Seaford Intersection Improvements	PE, RW, C	100% ST	\$ 1,800.0	\$ 1,800.0	\$ 0.0	\$ 0.0	\$ 0.0	\$ 0.0	\$ 0.0
23-124-01	Seaford - Routes US 13 and US 13A S 46 Intersection	PE	100% ST	171.0	0.0	171.0	0.0	0.0	0.0	0.0
		RW	100% ST	800.0	125.0	675.0	0.0	0.0	0.0	0.0
		C	100% ST	340.0	340.0	0.0	0.0	0.0	0.0	0.0
		C	100% FHWA	1,660.0	0.0	0.0	1,660.0	0.0	0.0	0.0
	Total All Funds			\$ 4,771.0	\$ 2,265.0	\$ 846.0	\$ 1,660.0	\$ 0.0	\$ 0.0	\$ 0.0

US113 AND SEABURY AVENUE, MILFORD

PROJECT SCOPE/DESCRIPTION: This project will install channelization on the eastbound approach and within the median opening to prohibit eastbound through movements, westbound through movements, and northbound left-turns.

PROJECT JUSTIFICATION: This major intersection was identified through the 1998 Highway Safety Improvement Program (HSIP).

County:	Sussex
Municipality:	Milford
Funding Program:	Road System - Collectors
Functional Category:	Management
Representative District:	36
Senatorial District:	18



US113 AND SEABURY AVENUE, MILFORD (CONTINUED)

PROJECT FUNDING INFORMATION

Project	Funding Type	Original Estimate	Current Estimate	Authorization	Committed as of 06/30/03	Expended as of 06/30/03	Committed Unexpended as of 06/30/03	Authorization Available
US113 and Seabury Avenue, Milford		\$ 129.9						
Prior Years	State			\$ 45.9	\$ 4.4	\$ 0.0	\$ 4.4	\$ 41.5
	Federal			\$ 0.0	\$ 0.0	\$ 0.0	\$ 0.0	\$ 0.0
	Other			\$ 0.0	\$ 0.0	\$ 0.0	\$ 0.0	\$ 0.0
FY 2003	State		\$ 129.9	\$ 8.4	\$ 0.0	\$ 0.0	\$ 0.0	\$ 49.9
	Federal			\$ 75.6	\$ 0.0	\$ 0.0	\$ 0.0	\$ 75.6
	Other			\$ 0.0	\$ 0.0	\$ 0.0	\$ 0.0	\$ 0.0
FY 2004 Authorized	State			\$ 0.0				\$ 49.9
	Federal			\$ 0.0				\$ 75.6
	Other			\$ 0.0				\$ 0.0
FY 2005 Projected	State			\$ 0.0				\$ 49.9
	Federal			\$ 0.0				\$ 75.6
	Other			\$ 0.0				\$ 0.0
FY 2006 Projected	State			\$ 0.0				\$ 49.9
	Federal			\$ 0.0				\$ 75.6
	Other			\$ 0.0				\$ 0.0
FY 2007-2009 Projected	State			\$ 0.0				\$ 49.9
	Federal			\$ 0.0				\$ 75.6
	Other			\$ 0.0				\$ 0.0
Total Projected	State			\$ 54.3	\$ 4.4			\$ 49.9
	Federal			\$ 75.6	\$ 0.0			\$ 75.6
	Other			\$ 0.0	\$ 0.0			\$ 0.0
Total All Funds		\$ 129.9	\$ 129.9	\$ 129.9	\$ 4.4	\$ 0.0	\$ 4.4	\$ 125.5

US113 AND SEABURY AVENUE, MILFORD (CONTINUED)**PROJECT TIMELINE INFORMATION**

Project #	Description	Phase	Funding Schedule	Current Estimate	Prior Years	FY 2003	FY 2004	FY 2005	FY 2006	FY 2007 -2009
21-009-01	US113 and Seabury Avenue, Milford	PE	100% ST	\$ 45.9	\$ 45.9	\$ 0.0	\$ 0.0	\$ 0.0	\$ 0.0	\$ 0.0
		C	90% FHWA	84.0	0.0	84.0	0.0	0.0	0.0	0.0
	Total All Funds			\$ 129.9	\$ 45.9	\$ 84.0	\$ 0.0	\$ 0.0	\$ 0.0	\$ 0.0