

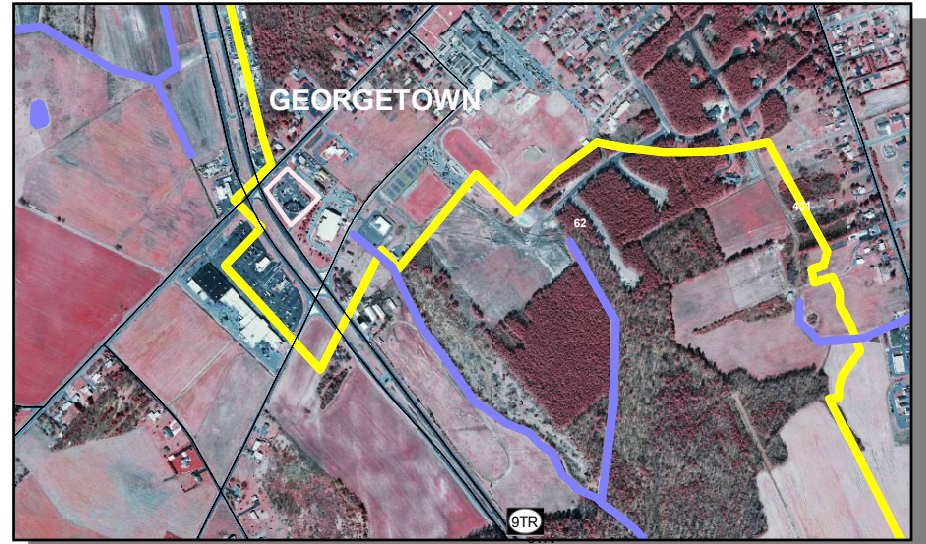
***SUPPORT SYSTEM  
TRANSIT  
FACILITIES***

**TRANSIT FACILITIES [Project No.'s 24-531-02 and 24-531-03]**

**PROJECT DESCRIPTION:** This project includes expanding the current bus parking area and fuel islands.

**Bulk Oil and Auto Transmission Fluid Tank** – This project will expand the current fuel island for DTC vehicles.

**Georgetown Parking Facility** – This project will expand the bus parking area for DTC vehicles as the service in Sussex County increases.



**Rehoboth Facilities Expansion** – The increased use of transit during the spring, summer and fall seasons have necessitated a need to expand the Rehoboth Park and Ride facility.



***TRANSIT FACILITIES (CONTINUED)***

**Sussex County Park and Ride and Transfer Hub** – Over the next six years, DelDOT plans to invest over \$100 million for various roadway improvements in the SR 54 and SR 24 corridors as discussed in previous sections of this book. In addition to the roadway improvements, additional transit services are needed to ease the burden on roadways and offer transportation alternatives to this growing area of Sussex County. A transit hub will be needed to facilitate the additional transit opportunities.



**PROJECT JUSTIFICATION:** Expansion of transit facilities in southeastern Sussex County need to be completed to meet the expected transit demand for the rapidly growing area.

<b>County:</b>	Sussex
<b>Municipality:</b>	Fenwick Island, Rehoboth, Georgetown, Millsboro
<b>Funding Program:</b>	Support System – Transit Facilities
<b>Functional Category:</b>	Expansion/Preservation
<b>Representative District:</b>	14, 37, 38, 41
<b>Senatorial District:</b>	18, 19, 20

**TRANSIT FACILITIES (CONTINUED)**

**PROJECT FUNDING INFORMATION**

Project	Funding Type	Original Estimate	Current Estimate	Authorization	Committed as of 12/31/04	Expended as of 12/31/04	Committed Unexpended as of 12/31/04	Authorization Available
Transit Facilities		\$ 10,703.0						
Prior Years	State			\$ 378.0	\$ 378.0	\$ 180.3	\$ 197.7	\$ 0.0
	Federal			\$ 320.0	\$ 320.0	\$ 0.0	\$ 320.0	\$ 0.0
	Other			\$ 0.0	\$ 0.0	\$ 0.0	\$ 0.0	\$ 0.0
FY 2005	State		\$ 10,703.0	\$ 1,271.0	\$ 1,153.4	\$ 0.0	\$ 1,153.4	\$ 117.6
	Federal			\$ 684.0	\$ 388.4	\$ 0.0	\$ 388.4	\$ 295.6
	Other			\$ 0.0	\$ 0.0	\$ 0.0	\$ 0.0	\$ 0.0
FY 2006 Request	State			\$ 270.0				\$ 387.6
	Federal			\$ 480.0				\$ 775.6
	Other			\$ 0.0				\$ 0.0
FY 2007 Projected	State			\$ 300.0				\$ 687.6
	Federal			\$ 0.0				\$ 775.6
	Other			\$ 0.0				\$ 0.0
FY 2008 Projected	State			\$ 0.0				\$ 687.6
	Federal			\$ 0.0				\$ 775.6
	Other			\$ 0.0				\$ 0.0
FY 2009-2011 Projected	State			\$ 7,000.0				\$ 7,687.6
	Federal			\$ 0.0				\$ 775.6
	Other			\$ 0.0				\$ 0.0
Total Projected	State			\$ 9,219.0	\$ 1,531.4			\$ 7,687.6
	Federal			\$ 1,484.0	\$ 708.4			\$ 775.6
	Other			\$ 0.0	\$ 0.0			\$ 0.0
Total All Funds		\$ 10,703.0	\$ 10,703.0	\$ 10,703.0	\$ 2,239.8	\$ 180.3	\$ 2,059.5	\$ 8,463.2

**TRANSIT FACILITIES (CONTINUED)****PROJECT TIMELINE INFORMATION**

Project #	Description	Phase	Funding Schedule	Current Estimate	Prior Years	FY 2005	FY 2006	FY 2007	FY 2008	FY 2009 -2011
	<b>Transit Facilities</b>									
	Bulk Oil and Automatic Transmission Fluid Tanks	C	100% ST	\$ 60.0	\$ 60.0	\$ 0.0	\$ 0.0	\$ 0.0	\$ 0.0	\$ 0.0
22-502-03	Fuel Island - Georgetown and Rehoboth	PLAN, PE	80% FTA	600.0	0.0	0.0	600.0	0.0	0.0	0.0
24-531-02	Georgetown - Parking Facility	PLAN, PE	80% FTA	1,255.0	400.0	855.0	0.0	0.0	0.0	0.0
24-531-03	Rehoboth Facilities Expansion	C	100% ST	238.0	238.0	0.0	0.0	0.0	0.0	0.0
	Sussex County Park and Ride and Transfer Hub	PLAN, PE	100% ST	1,550.0	0.0	1,100.0	150.0	300.0	0.0	0.0
	Transportation Center	PLAN, PE	100% ST	7,000.0	0.0	0.0	0.0	0.0	0.0	7,000.0
	Total All Funds			\$ 10,703.0	\$ 698.0	\$ 1,955.0	\$ 750.0	\$ 300.0	\$ 0.0	\$ 7,000.0