

# Annual Report 1968





## CONTENTS:

Foreword - Delaware Highway Story

- 9: Governor Terry
- 8: Department Members
- 11: Engineering
- 12: Financing Your Highway
- 13: Roadside Development
- 14: Planning
- 17: Road Design
- 18: Bridge
- 20: Freeways
- 22: Maintenance & Equipment
- 24: Traffic Division
- 26: Construction
- 27: Right of Way
- 28: Utilities
- 29: Mosquito Control
- 30: Communications
- 31: Controllers office
- 32: State Police
- 40: Motor Vehicle
- 41: Advice to Public

Statistical Addendum in Back Cover

*1968 ANNUAL REPORT*

*DELAWARE STATE HIGHWAY DEPARTMENT*

*July 1, 1967 thru June 30, 1968*

Prepared by

Public Information Office  
Delaware State Highway Department

We gratefully acknowledge the assistance of the Delaware State Planning Office for typography.





*To protect the public's investment in highway construction, the Department must constantly test and certify materials and techniques employed by the many contractors in complying with the Department's specifications.*

## **IMPROVED HIGHWAYS WILL BENEFIT EVERY DELAWAREAN**

Properly planned and timely constructed highways can make the total environment more pleasing, widen the range of employment opportunities, assist in guiding and stabilizing land utilization patterns, and improve the accessibility of the entire state for the movement of people and goods.

Highway improvements will offer definite benefits to every Delaware citizen.

- **AS MOTORISTS**, they will receive direct savings from less expensive vehicle operation, time savings and fewer accidents.
- **AS TAXPAYERS**, their past investments in highways will be protected, maintenance costs will be reduced and the accompanying improvements in the economy will broaden the tax base.
- **AS PROPERTY OWNERS**, highways will increase the value of adjacent land, provide better access to remote areas, and improve the environment by relieving congestion on presently overcrowded routes.
- **AS DELAWAREANS**, their increased mobility will enhance the over-all economic, social and recreational climate of the state.

Delaware citizens should realize that they pay for good highways even if those highways never materialize. Road users pay sales and motor fuel taxes to the Federal Government (and will continue to pay) whether or not a fair share of these dollars is returned to Delaware for highway construction. They are paying for the cost of accidents which could be eliminated by improved highways. They are paying through inefficient operation of vehicles on congested highways.





*A dangerous move at any speed . . . going around the block could give you a new lease on life if it prevented a fatal accident. It would only seem reasonable to donate 15 minutes today to insure that you will have another 24 tomorrow.*

# STATUS OF AUTHORIZED PROJECTS IN DELAWARE NEW CASTLE COUNTY

## I. Projects completed during the period from July 1, 1967 to December 31, 1968

1. Del. 2, St. James Ch. Rd. to Prices Corner
2. Del. 41, from Basin Cor. TO New Castle
3. Casho Mill Road, Newark

## II. Status of projects authorized prior to Fiscal Year 1969

### Construction in progress

4. Elkton Road, Newark
5. Del. 4, Stanton to Newport
6. S. Chapel Street, Newark
7. Faulkland Road

### Design in progress

8. Del. 141 from I-95 to Prices Corner
9. Del. 141, Kennett Pk. to Concord Pk.
10. New Castle Ave. from Rogers Cor. to Heald St.
11. U.S. 202 from Fairfax to Talleyville
12. Del. 2, from Wilmington to Prices Corner
13. Del. 2, from St. James Ch. toward Newark
14. Del. 4, Md. Ave., traffic safety improve.
15. Del. 896 from I-95 to Chrysler Plant
16. Linden Hill Road
17. Swanwyck Connector
18. Del. 72 from Milford Crossroads to Del. 7
19. Hillside Road

## 20. McKennon's Church Road

## 21. Centerville Road

## 22. Del. 9, New Castle to Road 381

## 23. Harmony Road

## 24. Del. 896 from Maryland Line to Newark Alignment Study in progress

## 25. Del. 141, Lancaster Pk. to Kennett Pk.

## 26. Marsh Rd. from Wash. St., Ext. to Naamans Rd.

## 27. Del. 7 from I-95 to Stanton

## 28. Naamans Road

## 29. Pike Creek Connector

## III. Authorized projects for Fiscal Year 1969

## 30. U.S. 13, Llangollen Est. to Rogers Cor., Traffic Safety Improvements

## 31. Del. 2, B & O RR Underpass to Newark

## 32. Del. 4, from Ogletown to Road 336

## 33. Del. 273, from Newark to Ogletown

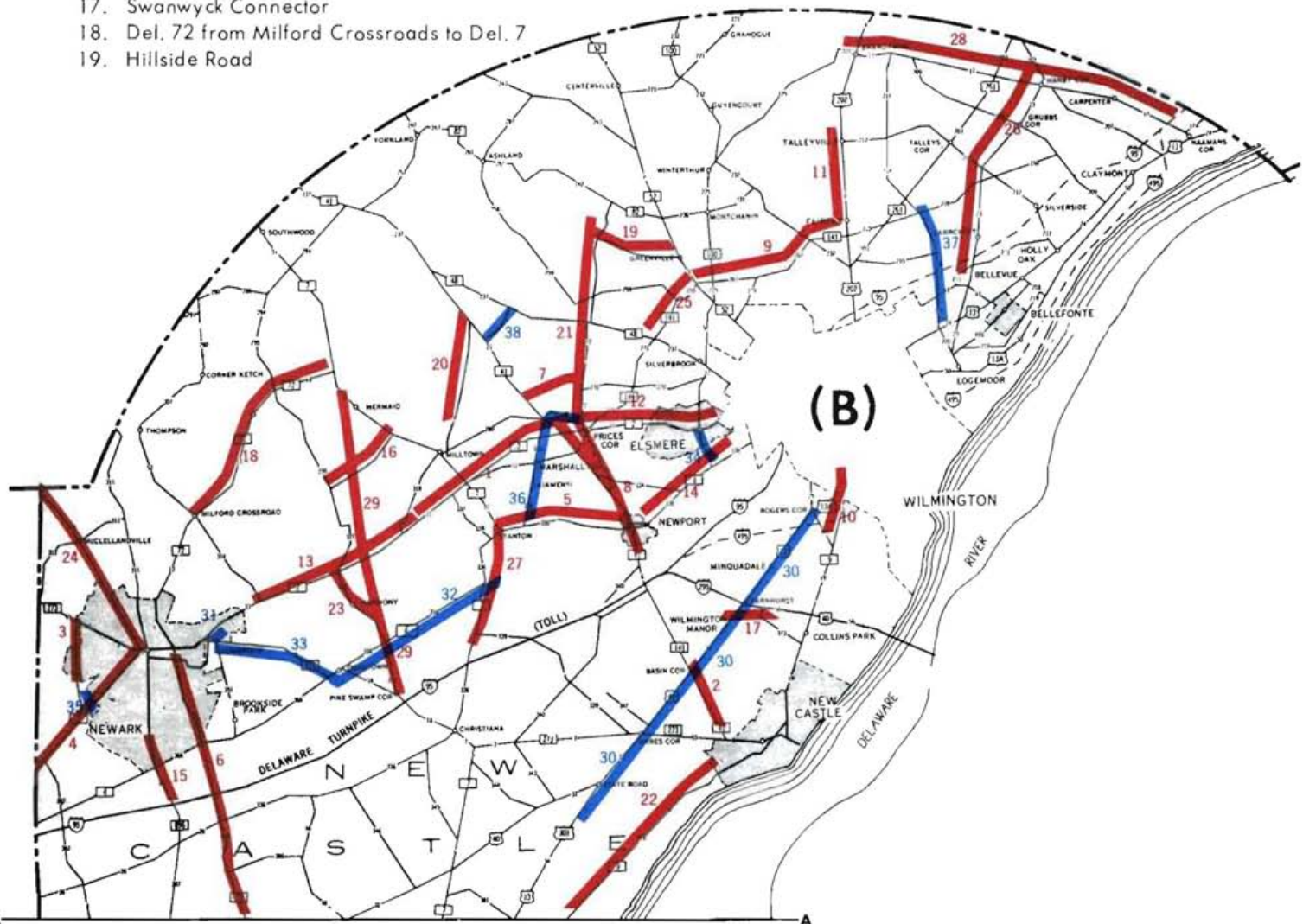
## 34. DuPont Road from Maryland Ave. to Del. 2

## 35. Casho Mill Road from Elkton Rd. to Rd. 360

## 36. Greenbank Road

## 37. Shipley Road

## 38. Hercules Road





# STATUS OF AUTHORIZED PROJECTS IN DELAWARE NEW CASTLE COUNTY

## I. Projects completed during the period from July 1, 1967 to December 31, 1968

1. Washington Street, Wilmington
2. U.S. 13 from Del. 896 to Kent Co. Line
3. Del. 896 from Glasgow to Summit Bridge

## II. Status of projects authorized prior to Fiscal Year 1969

### Construction in progress

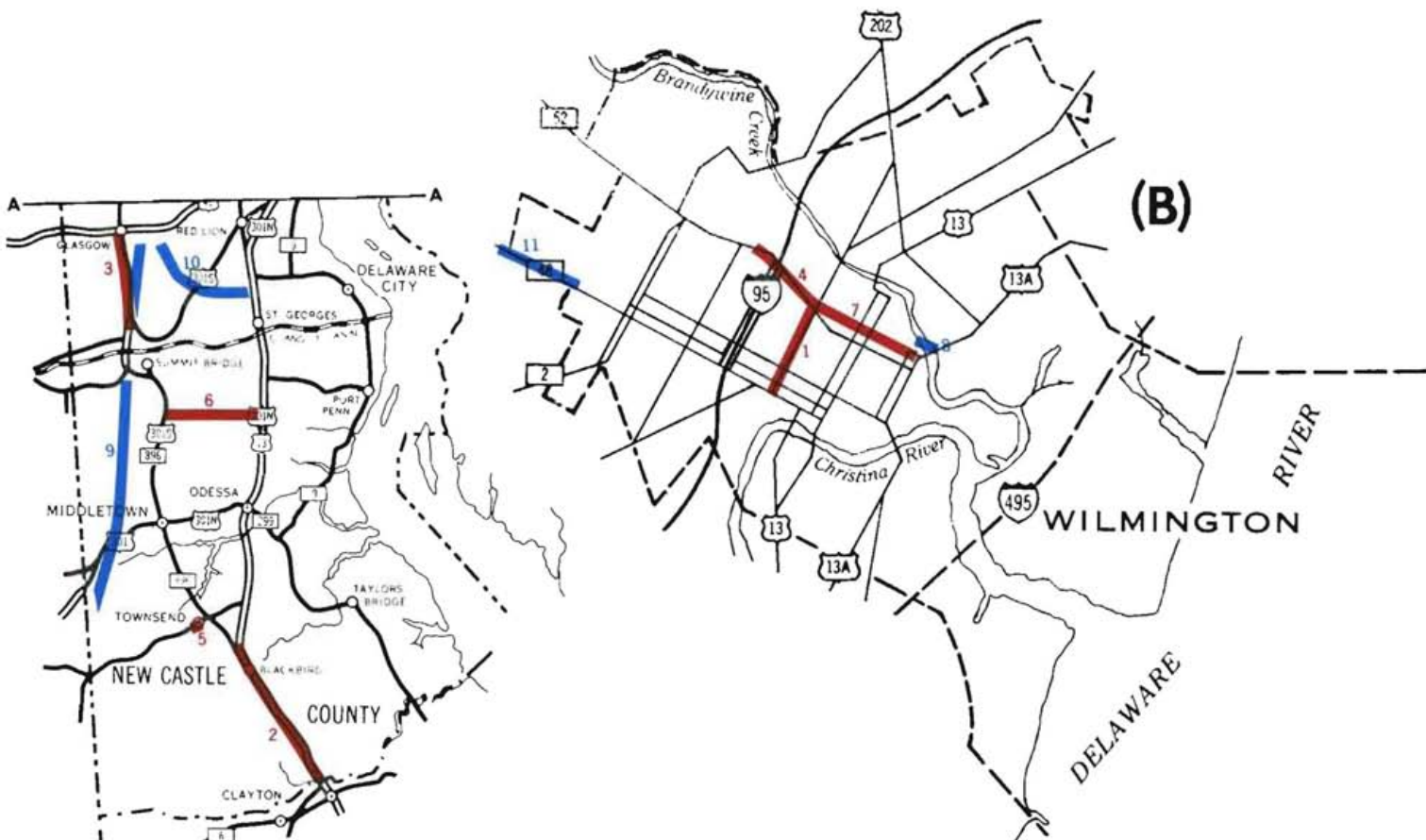
4. Delaware Ave. and 12th St., Wilmington
5. Townsend Street
6. Road 15, Boyds Corner to Mt. Pleasant

### Design in progress

7. 12th St., Wilmington from Wash. St. to Walnut Street

## III. Authorized projects for Fiscal Year 1969

8. 12th Street, Brandywine River Bridge
9. U.S. 301, Bay Bridge Connector
10. Road 356 from Wrangle Mill to U.S. 40
11. Lancaster Avenue from Greenhill Avenue to DuPont Road



# STATUS OF AUTHORIZED PROJECTS IN DELAWARE

## KENT COUNTY

### I. Projects completed during the period from July 1, 1967 to December 31, 1968

1. Del. 12, Felton to Frederica
2. New Burton Road, Dover
3. Walker Road, Dover
4. Little Creek Streets

### II. Status of projects authorized prior to Fiscal Year 1969

5. Delaware 10, Camden-Wyoming
6. North Street Extended, Dover
7. Saulsbury Road Extended

#### Design in progress

8. U.S. 13, existing Dover By-Pass safety improve.
9. U.S. 113, Frederica to Camden

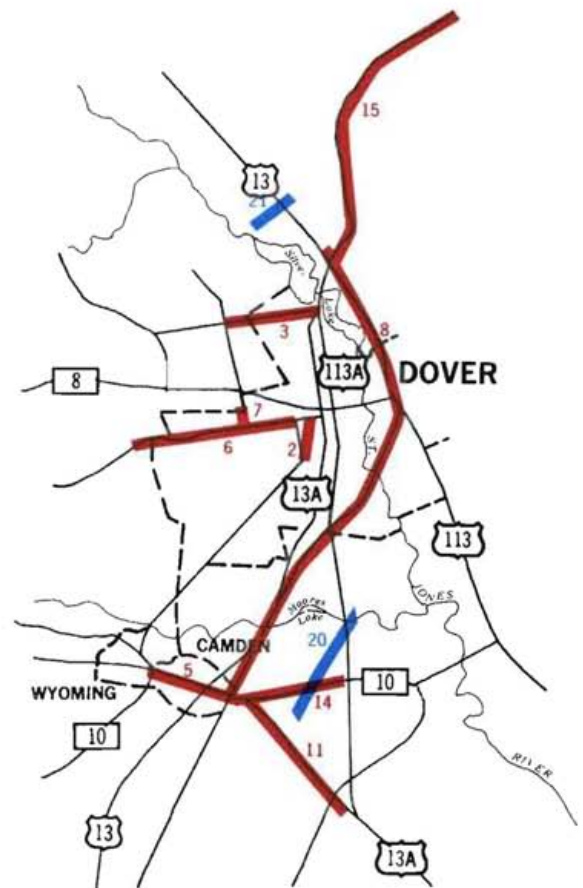
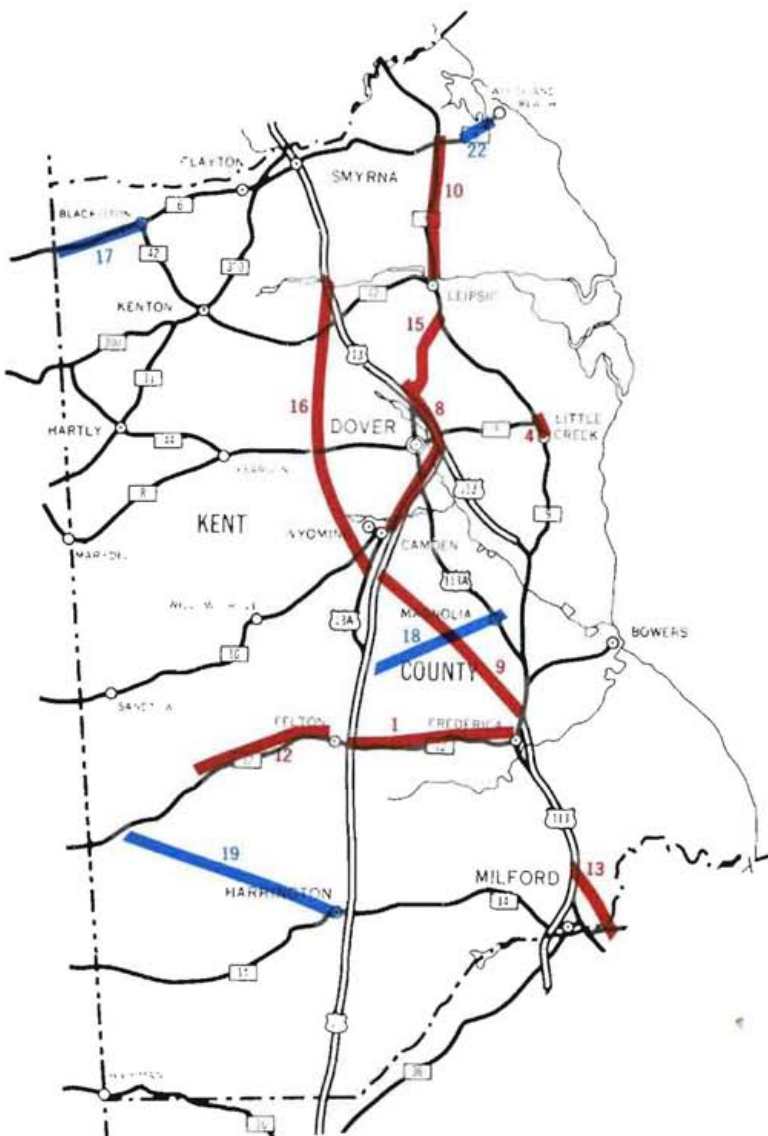
10. Delaware 9, Whitehall Crossroads to Delaware 6
11. Delaware 10, Rising Sun to Camden
12. Delaware 12, Felton to Hollandsville
13. Delaware 14, Milford By-Pass
14. Lebanon Rd., Camden to U.S. 113A
15. Leipsic Road

#### Alignment study in progress

16. Dover By-Pass, New Alignment

### III. Authorized projects for Fiscal Year 1969

17. Del. 6, Maryland Line to Blackiston
18. Canterbury to Magnolia, Road 31
19. Harrington to Whiteleysburg, Road 59
20. Old Mill Road, Road 355
21. State College, Southern Loop
22. Woodland Beach Causeway & Bridge



# STATUS OF AUTHORIZED PROJECTS IN DELAWARE SUSSEX COUNTY

## I. Projects completed during the period from July 1, 1967 to December 31, 1968

1. U.S. 113 from Maryland Line to Road 432
2. Main Street, Bridgeville
3. Stein Highway Extension, Seaford

## II. Status of projects authorized prior to Fiscal Year 1969

### Construction in progress

4. U.S. 113, Georgetown to Road 432
5. Del. 14, Dewey Beach to Indian River Inlet

### Design in progress

6. Delaware 14, Milford By-Pass
7. Delaware 14, Slaughter Bch. Rd. to Del. 16

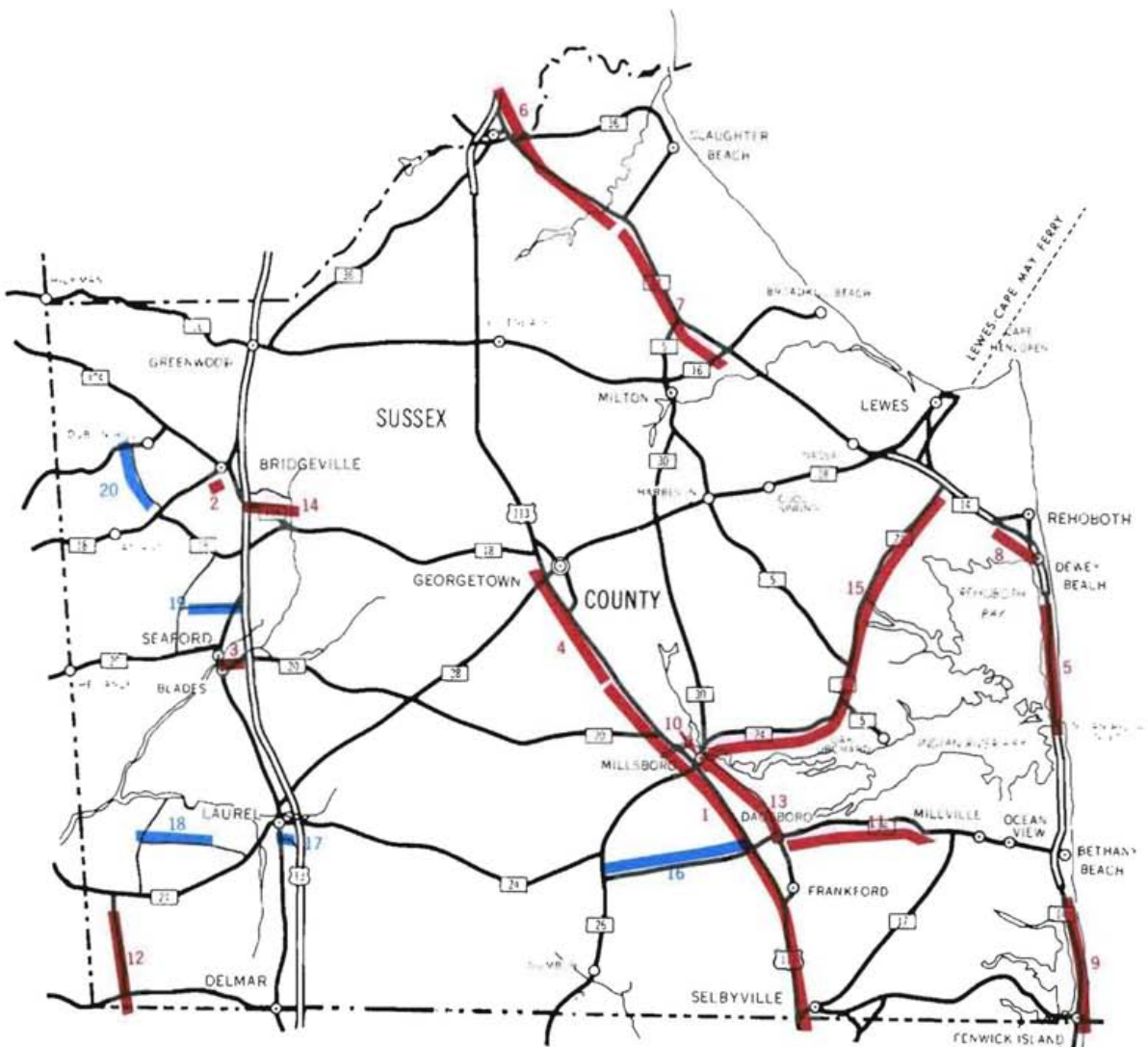
8. Del. 14, Rehoboth By-Pass
9. Del. 14, Bethany Beach to Maryland Line
10. Del. 24, Relocation East of Millsboro
11. Del. 26, Dagsboro to Clarksville
12. Road 76, Packing House Cor. to Del. 24
13. Road 331, Millsboro to Dagsboro
14. Road 545, Southeast of Bridgeville

### Alignment study in progress

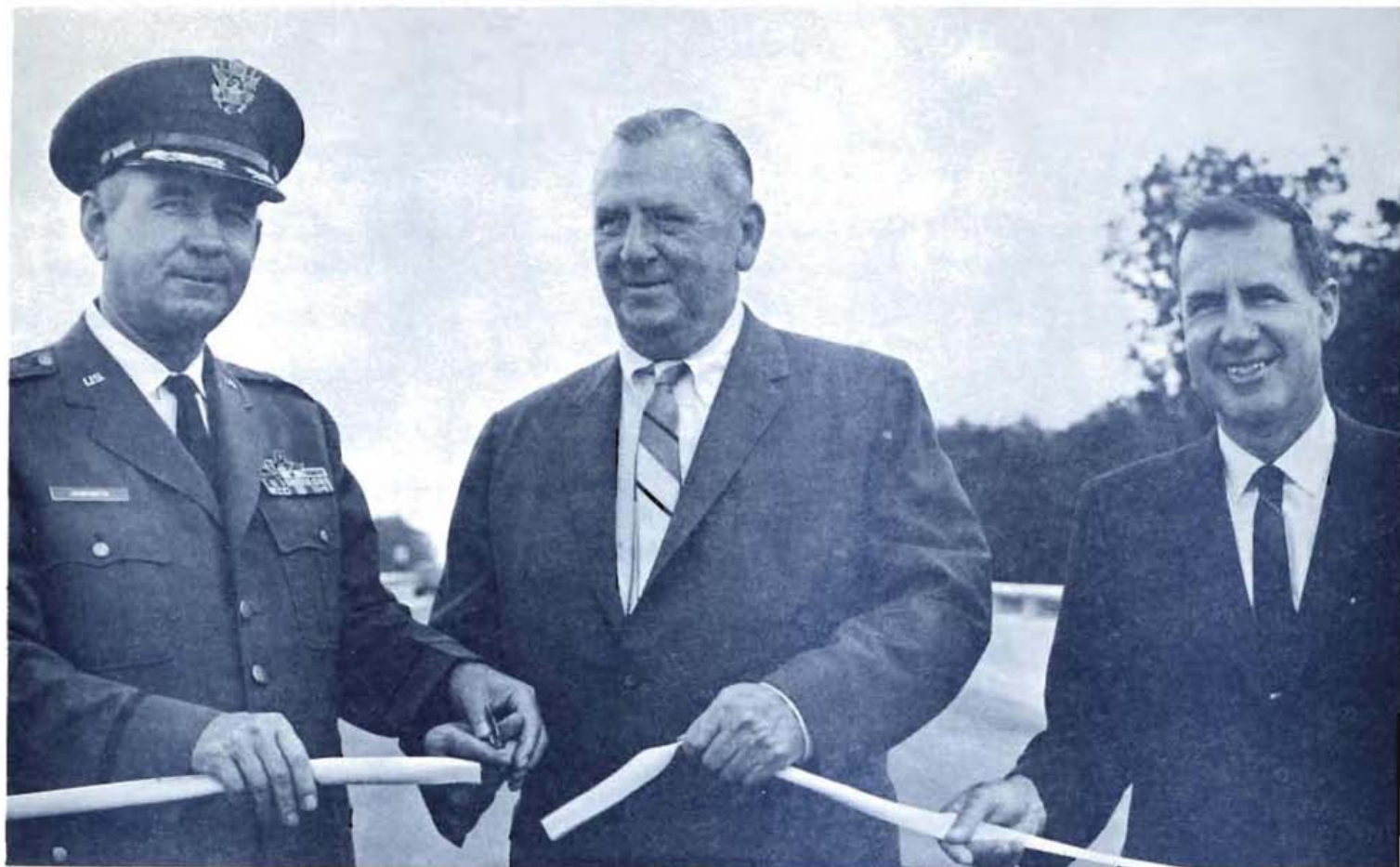
15. Delaware 24, Millsboro to Del. 14

## III. Authorized projects for Fiscal Year 1969

16. Del. 26, Dagsboro to Shaft Ox Corner
17. Road 70, Laurel to U.S. 13
18. Road 494, Southwest of Laurel
19. Road 544, North of Seaford
20. Road 562, West of Bridgeville







*Governor Charles L. Terry, Jr. accepts an annual report from Chairman Henry T. Price . . . . cuts the ribbon to open a new road . . . . . and forwarded a Department prepared block of Brandywine Granite in the shape of "The First State" to a memorial in Florida.*





**Lemuel H. Hickman**  
*Vice Chairman*  
FRANKFORD



**Frank H. Mackie, Jr.**  
WILMINGTON



**William J. Francis**  
TOWNSEND



**George M. Nelson**  
DELMAR



**Thurman Adams, Jr.**  
BRIDGEVILLE



**William G. Dorsey**  
WILMINGTON



**Walter L. Wheatley**  
CLAYTON



**William R. Murray**  
FRANKFORD



**Elmer Pratt**  
SMYRNA



**C. Wardon Gass**  
WILMINGTON



**Henry T. Price**  
*Chairman, State Highway Department*

**ERNEST A. DAVIDSON**

*Director of Operations*

**JOE S. ROBINSON**

*Chief Engineer*

**JAMES J. DEPUTY**

*Controller*

**CHARLES G. LAMB**

*Superintendent State Police Division*

**RUSSELL W. WHITBY**

*Motor Vehicle Commissioner*