

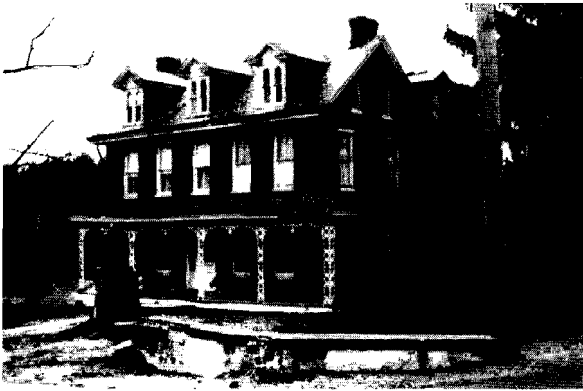


Architectural Investigations on State Route 7

U.S. Route 13 to Interstate 95
and at Milltown
New Castle County, Delaware

Martha H. Bowers

The Cultural Resource Group
Louis Berger & Associates, Inc.
East Orange, New Jersey



U.S. Department
of Transportation

Federal Highway
Administration



Delaware Department of Transportation



DELDOT ARCHAEOLOGICAL SERIES 57

John T. Davis
Director
Division of Highways
1988

Cover Illustrations (Top to Bottom):

Silver Hill Farmhouse, Route 7

Chandler House, Milltown Road

Harlan-Chandler Mill, Milltown Road

John T. Simmons House, Route 7

ARCHITECTURAL INVESTIGATIONS
ON STATE ROUTE 7,
U.S. ROUTE 13 TO INTERSTATE 95
AND AT MILLTOWN
NEW CASTLE COUNTY, DELAWARE

DELDOT PROJECT 79-101-02

DELDOT ARCHAEOLOGY SERIES NO. 57

FHWA FEDERAL AID PROJECT F-1045(11)

BY

Martha H. Bowers

The CULTURAL RESOURCE GROUP
LOUIS BERGER & ASSOCIATES, INC.
East Orange, New Jersey

Submitted To

U.S. DEPARTMENT OF TRANSPORTATION
Federal Highway Administration

and

DELAWARE DEPARTMENT OF STATE
Division of Historical and Cultural Affairs
Bureau of Archaeology and Historic Preservation

Prepared For

DELAWARE DEPARTMENT OF TRANSPORTATION
Division of Highways
Location and Environmental Studies Office

John T. Davis
Director
Division of Highways

ABSTRACT

In January, 1987, an architectural assessment was conducted along that portion of State Route 7 lying between U.S. Route 13 and Interstate 95 in New Castle and White Clay Creek Hundreds, and also at Milltown Road in Mill Creek Hundred, New Castle County, Delaware. The work was undertaken by the Cultural Resource Group of Louis Berger & Associates, Inc. for the Delaware Department of Transportation (DelDOT), and the Federal Highway Administration (FHWA). The purpose of the survey was to provide information for compliance with Section 106 of the National Historic Preservation Act in consultation with the State Historic Preservation Office (SHPO) in the Bureau of Archaeology and Historic Preservation (BAHP). A program of documentary research and field investigation was employed to inventory four properties on Route 7 ranging in date from the late 18th to late 19th centuries. Three of these were once associated with agricultural activities; the fourth property includes a former gristmill and a dwelling associated with the crossroads community of Milltown. In consultation with the BAHP, DelDOT and FHWA, three properties were evaluated as meeting the standards of integrity and architectural importance necessary for eligibility for the National Register of Historic Places.

TABLE OF CONTENTS

	<u>PAGE</u>
ABSTRACT.....	i
TABLE OF CONTENTS.....	ii
LIST OF FIGURES.....	iii
LIST OF PLATES.....	iv
INTRODUCTION.....	1
METHODS.....	4
BACKGROUND.....	5
ARCHITECTURAL RESOURCES: DESCRIPTION AND EVALUATION.....	25
BIBLIOGRAPHY AND REFERENCES CITED.....	71
PERSONNEL.....	74
APPENDICES	
A Cultural Resource Survey Forms Jonathan Davis Farmstead.....	75
B Determination of Eligibility Forms Silver Hill Farmhouse..... John T. Simmons Farmstead..... Harlan-Chandler Mill Complex.....	82 90 98
C Glossary.....	110
D Research Proposal.....	113

LIST OF FIGURES

<u>FIGURE</u>		<u>PAGE</u>
1	Location Map Regional.....	2
2	Location Map.....	7
3	Project Area, 1868.....	8
4	Project Area, 1881.....	9
5	Project Area, 1893.....	10
6	Location Map - Milltown.....	15
7	Milltown and Vicinity, 1849.....	16
8	Milltown and Vicinity, 1868.....	17
9	Milltown and Vicinity, 1881.....	18
10	Milltown and Vicinity, 1893.....	19
11	Milltown: Plan for Widening and Realignment of Limestone Road, ca. 1922.....	63
12	Relocation of Milltown Intersection, 1964.....	64

LIST OF PLATES

<u>PLATE</u>		<u>PAGE</u>
1	William Cooper House, View to Northwest.....	22
2	William Cooper Bank Barn, Section (DWGS).....	23
3	Jonathan Davis House, View to West.....	27
4	Jonathan Davis Barn (Prior to Collapse), View to Northwest.....	28
5	Silver Hill Farm, Aerial View to West.....	30
6	Silver Hill Farm, Farmhouse, View to Northwest....	32
7	Silver Hill Farm, Farmhouse, View to Southwest....	33
8	Silver Hill Farm, Farmhouse, Main Entrance.....	35
9	Silver Hill Farm, Dairy Barn, View to Southeast...	37
10	Silver Hill Farm, Machine Shed and Small Animal Barn, View to Northeast.....	38
11	John T. Simmons House, View to Northeast.....	42
12	John T. Simmons House, View to Southwest.....	43
13	John T. Simmons House, Cupboards and Fireplace in South Parlor of Main Block.....	45
14	John T. Simmons House, Main Stair.....	46
15	John T. Simmons Farmstead, Granary, View to West.....	48
16	John T. Simmons Farmstead, Dairy Barn and Sheds, View to Northwest.....	49
17	John t. Simmons Farmstead, Partridge Memorial, View to East.....	50
18	Harlan-Chandler Mill Complex, Aerial View of Milltown Intersection.....	54
19	Harlan Mill, View to South.....	55
20	Harlan Mill, View to Northeast.....	56
21	Abram Chandler House, View to Southwest.....	58
22	Abram Chandler House, View to North.....	59
23	Garage and Stable at Chandler House, View to Southeast.....	61