



Plate 60. Francis-Anne Motel, Complex A (3-34-13.19-82), Office, From the Northeast.

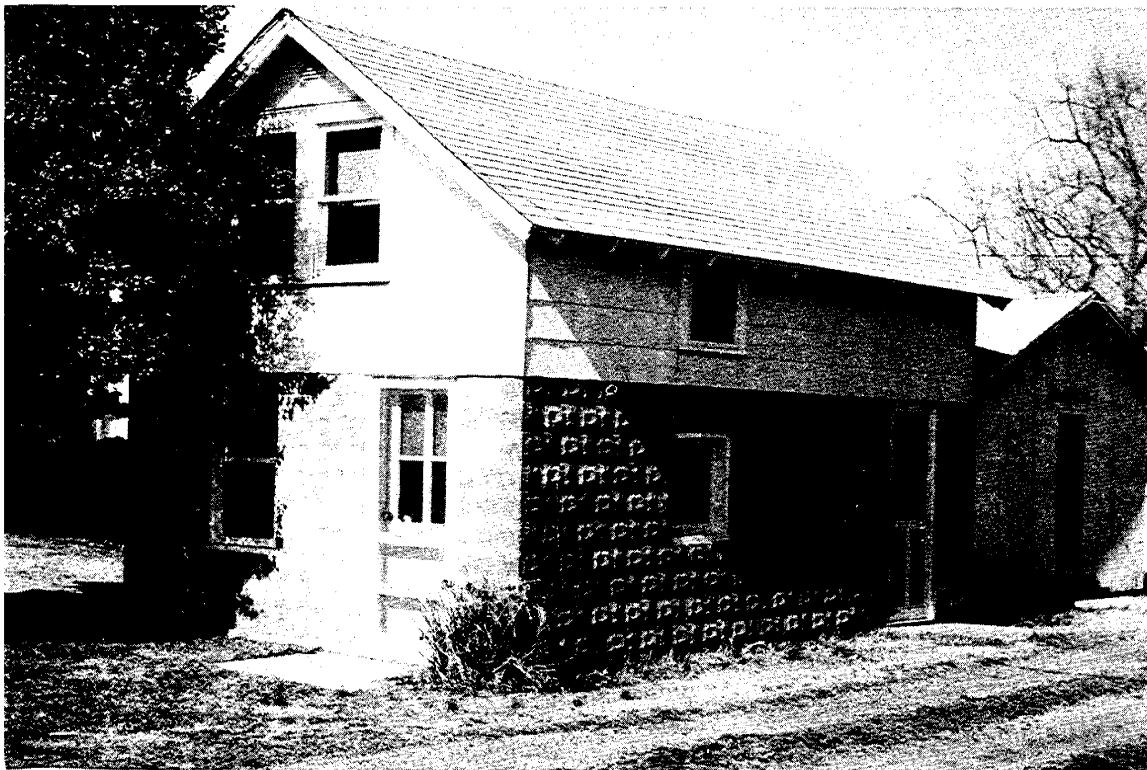


Plate 61. Francis-Anne Motel, Complex A (3-34-13.19-82), Cottage 6W, From the East.



Plate 62. Francis-Anne Motel, Complex A (3-34-13.19-82), Large House, From the East.

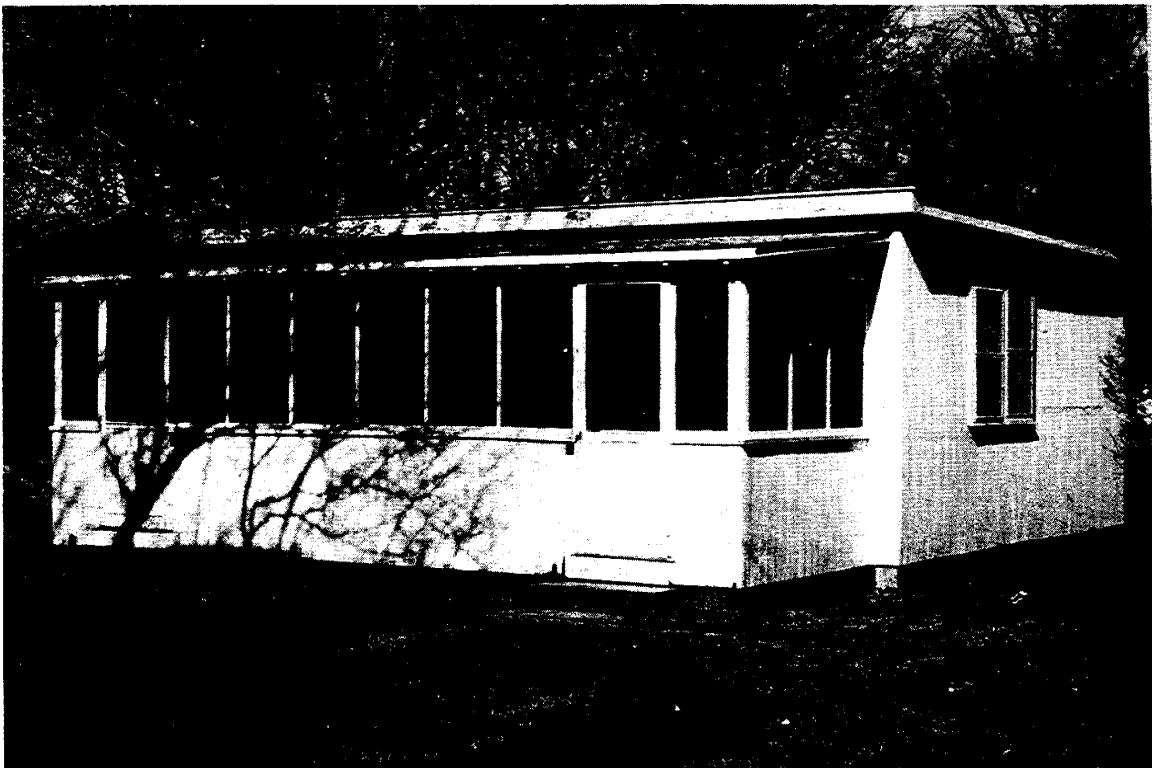


Plate 63. Francis-Anne Motel, Complex A (3-34-13.19-82), Cottage With Screened Porch, From the East.



Plate 64. Francis-Anne Motel, Complex A (3-34-13.19-82), Commercial Building, From the East.

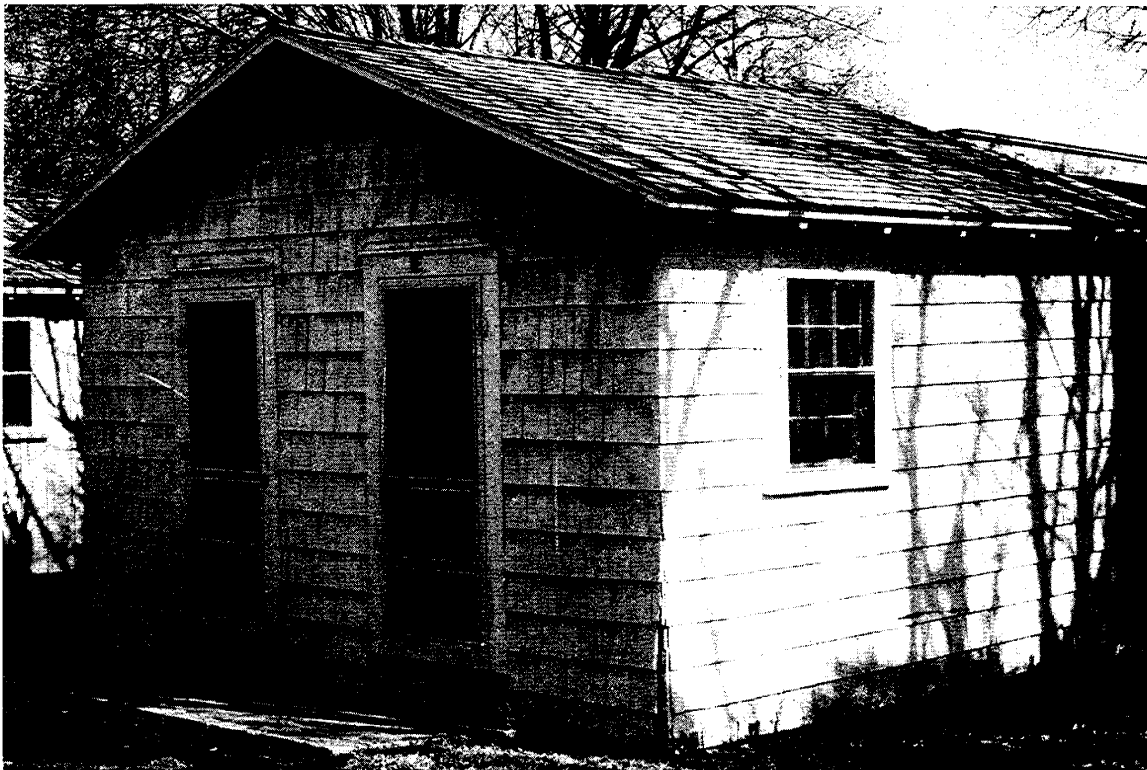


Plate 65. Francis-Anne Motel, Complex A (3-34-13.19-82), Cottage 1E, From the South.



Plate 66. Francis-Anne Motel, Complex A (3-34-13.19-82), Cottage 2W, From the North.



Plate 67. Francis-Anne Motel, Complex A (3-34-13.19-82), Cottage 4W, From the East.



Plate 68. Francis-Anne Motel, Complex A (3-34-13.19-82), Rear Cottage, From the Northeast.



Plate 69. Francis-Anne Motel, Complex A (3-34-13.19-82), Barn, From the East.



Plate 70. Francis-Anne Motel, Complex A (3-34-13.19-82), Cabinet Shop, From the Southwest.



Plate 71. Helen F. Walker House (3-34-13.19-84), From the South.



story as well as a sash entrance door in the second bay from the easternmost end. The southwestern elevation contains a tripled 1/1 sash window, a single and a paired window on the first story. Both side elevations have five 1/1 sash windows on the second story. All window and door openings are trimmed with plain surrounds, a molded strip atop the lintels forming small hood molds. The brick chimney rises from the ridge to the southwest of the center.

The office is a one and a half story gable roofed wood framed dwelling with a three bay facade composed of a sash door centered between paired 1/1 sash windows. Above the concrete piers of the foundation the exterior walls and roof are covered with composite shingles. The entrance door is sheltered by a gabled doorhood supported by struts. A screened porch extends from the rear elevation below a gabled dormer with one 1/1 sash window. On the side elevations a paired 1/1 sash window is centered in the peak, and a single 1/1 sash window occupies the first story with an additional paired 1/1 sash window in the southwestern elevation. Louvered shutters trim the front windows; plain surrounds occur at all the door and window openings.

The commercial building labeled Colony Paints, is a flat roofed one story rectangular concrete block commercial building, with the front two bays featuring a built up parapet and a facing of artificial stone. The southeastern elevation is organized as a five bay facade, with the glass entrance door sharing the central bay with a paired show window, and the southernmost two bays containing paired show windows of the same proportions. The easternmost two bays are occupied by louvered show windows. On the northeastern elevation, a sash entrance door and louvered window share the easternmost bay, a louvered window occupies the next bay to the north, and in the back section are two garage doors and two window bays. A smoke stack occupies the westernmost corner of the northwestern elevation. This building is a non-contributing resource.

The cabinet shop, labeled R. C. Hill Cabinet Shop, is a two story concrete block rectangular block with a one story rectangular wood framed addition extending from the southeastern elevation. On the main block the upper story is covered with brick paper sheathing and the overhanging flat roof is covered with composite sheathing. Corrugated metal covers the walls and shed roof of the addition. The five bay southwestern elevation of the addition is open. On the main block, vertical board sliding doors are located on the northwestern elevation and on the southwestern elevation or facade. A paneled sliding sash door also appears on the southwestern elevation. An eight light casement window is located on the second story of the southeastern elevation of the main block. This building is a non-contributing resource.

The shed is a one story rectangular wood framed block with an overhanging gabled roof, set on large blocks of wood as a foundation. The exterior walls are covered with vertical boards and the roof with composite shingles. Sliding double leafed doors of diagonal boards are located on the southeastern and southwestern elevations. Two paired casement windows occupy the southern half of the southeastern elevation.

Several of the cottages are unique in this grouping. Cottage 10E (Cottage with screened porch) is a flat roofed one story rectangular block, set on a foundation of concrete block piers. The exterior walls are covered with vertical flush boarding. From the southeastern elevation extends a wood framed shed roofed screened porch which covers the four bays of the facade. The facade contains two 1/1 sash windows and two entrance doors in the end bays. The side elevations each contain paired 1/1 sash windows.

Cottage 6W is a one and a half story rectangular block with a rockfaced CMU first story and a wood framed top story. The overhanging gable roof with exposed rafter ends is covered with composite shingles. On the southeastern gable ended elevation or facade the sash entrance door occupies the eastern bay and a 1/1 sash window the southern bay. A paired 1/1 sash window is centered in the gable above. On the northeastern elevation a single light window is located on each story, and a sash entrance door is located at the northern end of the elevation.

Cottage 11E is a one story rectangular wood framed block set on concrete block piers with a shed roofed porch extending from the northeastern gable ended elevation or facade. The exterior walls are covered with brick paper sheathing, the gable roof and porch roof covered with composite shingles. Three 1/1 sash windows are symmetrically placed on each side elevation. The paneled sash entrance door occupies the eastern bay of the facade, next to a 1/1 sash window in the northern bay.

On Cottage 5W, the southern slope of the gable roof is extended over the rectangular one story wood framed block set on concrete piers and covered with vertical flushboarding. A large casement window shares the eastern gable ended elevation with a vertical flush board entrance door. Another large casement window is located on the northern elevation.

Cottage 9E is an ell-plan one story wood framed gable roofed cottage, the exterior walls covered with vertical flushboarding and the roof with composite shingles. Concrete block piers form the foundation. The western gable ended elevation or facade contains a 6/6 sash window, with the sash entrance door located on the western elevation of the rear ell. The northern elevation contains a one light casement window. The southern elevation contains two such windows.



Five of the cottages have two entrance doors on the gable ended facade, Cottages 1E, 3E, 4E, 3W, and 4W. All five cottages are one story, gable roofed wood framed rectangular blocks. The walls of 1E are covered with shingles, those of 3E, 4E, 3W, and 4W with vertical flush boarding. Composite shingles cover the roofs of all five cottages. Cottages 3E and 4E have single light casement windows in plain surrounds on the northern and southern elevations, and vertical board entrance doors. Cottage 1E has one 6/6 sash window on the northern and southern elevations, and a sash entrance door, all in plain surrounds. Cottages 3W and 4W have one 6/1 sash on the northern and southern elevations, and sash entrance doors in plain surrounds. There is a small flat roofed addition on the northern elevation of Cottages 3E and 3W.

The remaining cottages, 1W, 2W, 2E, 5E, 6E, 7E, and 8E, are identical in most respects. All seven of these one story wood framed gable roofed cottages have a single entrance door in a gable ended facade. All seven cottages rest on concrete block piers, and are covered with vertical flush boarding on the exterior walls and composite shingles on the roofs. Sash entrance doors and 1/1 sash windows are located on Cottages 1W, 2W, and 2E. Vertical board entrance doors and single light casement windows are located on Cottages 5E, 6E, 7E, and 8E. All cottages have plain surrounds at door and window openings. Cottage 1W has a small flat roofed addition at the western end of the northern elevation.

**Helen F. Walker House and Cottage** c. 1920-1940  
Rehoboth Avenue (tax map #3-34-13.19-84)  
Figure 42; Plates 71-72  
CRS #S-8018

**Description:** The two and a half story Helen F. Walker House stands to the northwest of the one story cottage, closer to the intersection of Route 1 and Rehoboth Avenue. This is a rectangular wood frame block with a gabled roof, the exterior walls covered with aluminum cladding beneath a gabled roof sheathed in composite shingles. Several additions to the original dwelling include a two-story gable roofed section at the western end of the southwestern elevation, a one-story section which extends the width of the northeastern elevation, and a hip roofed one-story section which encloses the southern corner of the original block. Windows and doors are trimmed with plain surrounds, a molded strip atop the lintel forming a simple hood-mold. The southwestern elevation or facade contains three 6/1 sash windows on the second story and one centered in the peak of the gable above. On the first story of the facade are two 6/1 sash windows, a 2/2 and a 1/1 sash window. The 3/3 light sash entrance door occupies the southern bay of the facade. On the northwestern elevation of the main block two paired 6/1 sash windows and one single 6/1 sash window are



Plate 72. Helen F. Walker Cottage (3-34-13.19-84), From the North.



Plate 73. Janice P. Lewis House (3-34-13.19-86), From the North.

symmetrically arranged on the first story, with a paired and a single sash window on the second story. A sash entrance door flanked by narrow 6/1 sash windows occupies the northwestern elevation of the one story addition at the rear of the house. The northeast or rear elevation has three paired 6/1 sash windows on the one story addition, two paired 6/1 sash window centered in the gable peak above. Three of the sections show windows on the southeast elevation. In the main block on second story are two 6/1 sash windows; in the one story addition at the southern end of the elevation are two 6/1 sash windows, and in the one story addition at the rear is one paired 6/1 sash window. Louvered metal shutters trim the windows on the second story of the southeastern and southwestern elevations. The brick chimney is centered on the southeastern slope of the roof.

The Helen F. Walker Cottage is a rectangular one-story wood framed dwelling set on a concrete block foundation, located on the northeast side of Route 1 near the intersection with Rehoboth Avenue. Composite shingles clad the exterior walls. The gable roof, with exposed rafter ends supporting the overhang on the side elevations, is also covered with composite shingles. The northwest elevation faces Rehoboth Avenue and forms the three bay facade, with an axial sash entrance door set between a 1/1 sash window on either side. A one-story hip roofed wing, centered on the northeastern elevation, contains an entrance door on the northwest elevation, reached by three brick steps. On the northeastern elevation of the addition are paired windows, and on the main block, one paired and one single 1/1 sash window. Like all windows and doors in the main block, the two paired windows and one single 1/1 sash window found on the southeast elevation are set in plain surrounds with molding atop the lintels forming a small hood mold. A concrete block chimney rises from the ridge at the northeast end of the main block.

One outbuilding stands on this property, a one story rectangular frame shed, the exterior walls covered with vertical board siding and the shed roof sheathed with corrugated metal. It is located southwest of the one story cottage, at the end of a driveway leading to Route 1.

**Janice P. Lewis House** c. 1915-1920  
722 Rehoboth Avenue (tax map #3-34-13.19-86)  
Figure 42; Plate 73  
CRS #S-1077

**Description:** The Janice P. Lewis House is a square two and a half story wood framed dwelling with stained wood shingles covering the exterior walls and composite shingles covering the hipped roof. A foundation of rock faced CMU supports both the house and the one story hip roofed screened porch which fronts the northeastern elevation or facade. Battered wood posts support the porch roof, and triangle corner braces detail the

screened panels of the porch. The facade is organized as three bays on the first story. It contains an axial sash entrance door between paired 4/1 sash windows set in plain surrounds. Moldings atop the lintels form small hood molds. On the second story the facade reads as two bays formed by paired 4/1 sash windows. A hip roofed dormer occupies the center of the roof slope on the facade, filled with a three light window. The northwestern elevation contains two 4/1 sash windows on the second story, and on the first story, one such window and a three sided bay window at the western end. On the southeastern elevation two 4/1 sash windows light the second story. On the first story are one paired and one single sash 4/1 window. A one story addition extends across the rear or southwestern elevation. The brick chimney is centered on the southeastern slope of the roof. One outbuilding stands on this property, a rectangular one story wood framed garage. It is located to the south of the house, at the end of a driveway which parallels the southeastern elevation of the house. Under a gable roof sheathed in composite shingles the exterior walls are covered with vertical board siding. A 2/2 casement window is centered in the southwest elevation, and the door on the northeast elevation.

**Francis-Anne Motel, Complex B** c. 1920-1955  
Rehoboth Avenue (tax map #3-34-13.19-87)  
Figure 42; Plates 74-77  
CRS #S-8019

**Description:** The Francis-Anne Motel, Complex B is a group of eight buildings occupying a site southeast of the intersection of Delaware Routes 1 and 1A and bounded on two sides by those highways. The largest building contains 20 motel units and the motel office and is oriented to Route 1. The other smaller buildings flank a driveway connecting Routes 1 and 1A at the eastern boundary of the site.

The largest building is a one story ell plan motel composed of two gable roofed wings. On the southwestern gable end elevation is a one story gable roofed office addition extending toward Route 1. The attic story on the gable end elevations of both the office addition and the main block is sheathed in vertical board and batten siding; other exterior wall surfaces are faced with brick. The southwestern elevation or facade of the office contains a sash entrance door flanked by sash windows. The wing adjoining the office contains 14 motel units, each unit door flanked by a 1/1 sash window and a high horizontal single light window. The other wing contains six identical motel units. This building is a non-contributing resource.

Building #2 is a rectangular one and a half story wood framed cottage set on concrete block piers, with both exterior walls and gable roof covered with composite shingles. Centered on the



Plate 74. Francis-Anne Motel, Complex B (3-34-13.19-87), Site, From the Northeast.



Plate 75. Francis-Anne Motel, Complex B (3-34-13.19-87), Motel Units, From the Northeast.

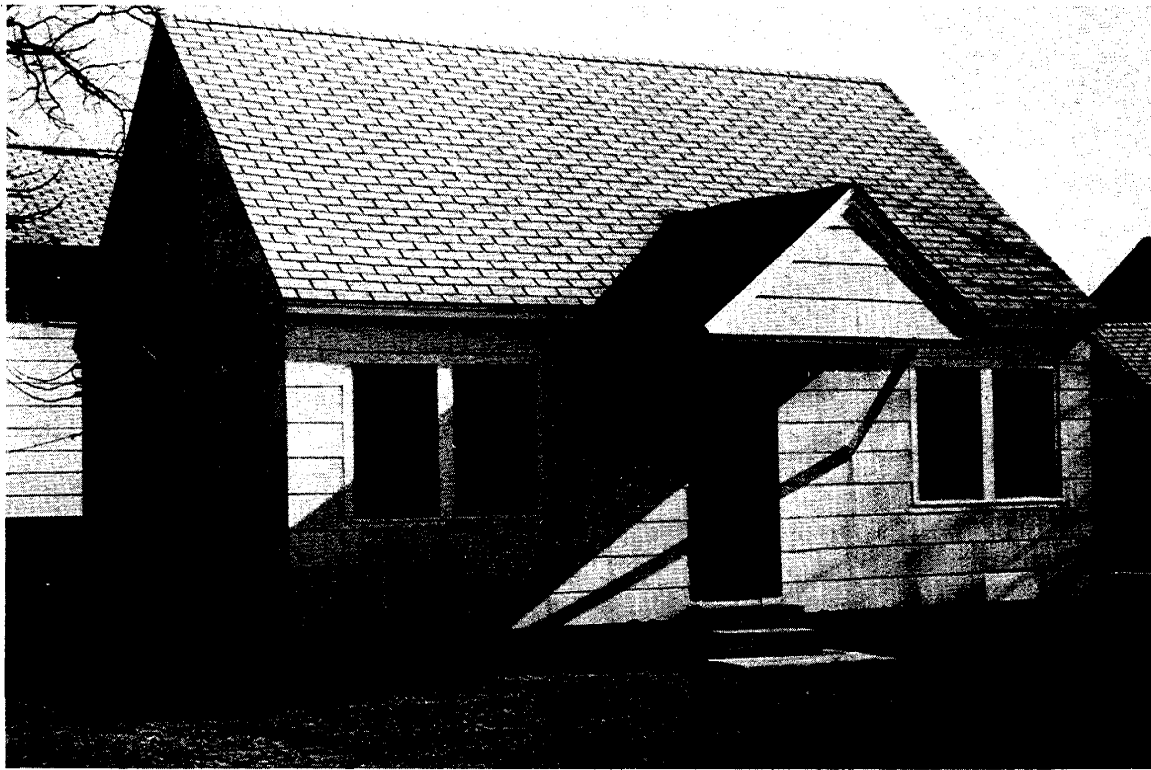


Plate 76. Francis-Anne Motel, Complex B (3-34-13.19-87), Cottage 2, From the North.



Plate 77. Francis-Anne Motel, Complex B (3-34-13.19-87), Cottage 8, From the South.