

# Newark Regional Transportation Center



Newark City Council

June 24, 2013

# Newark Regional Transportation Center



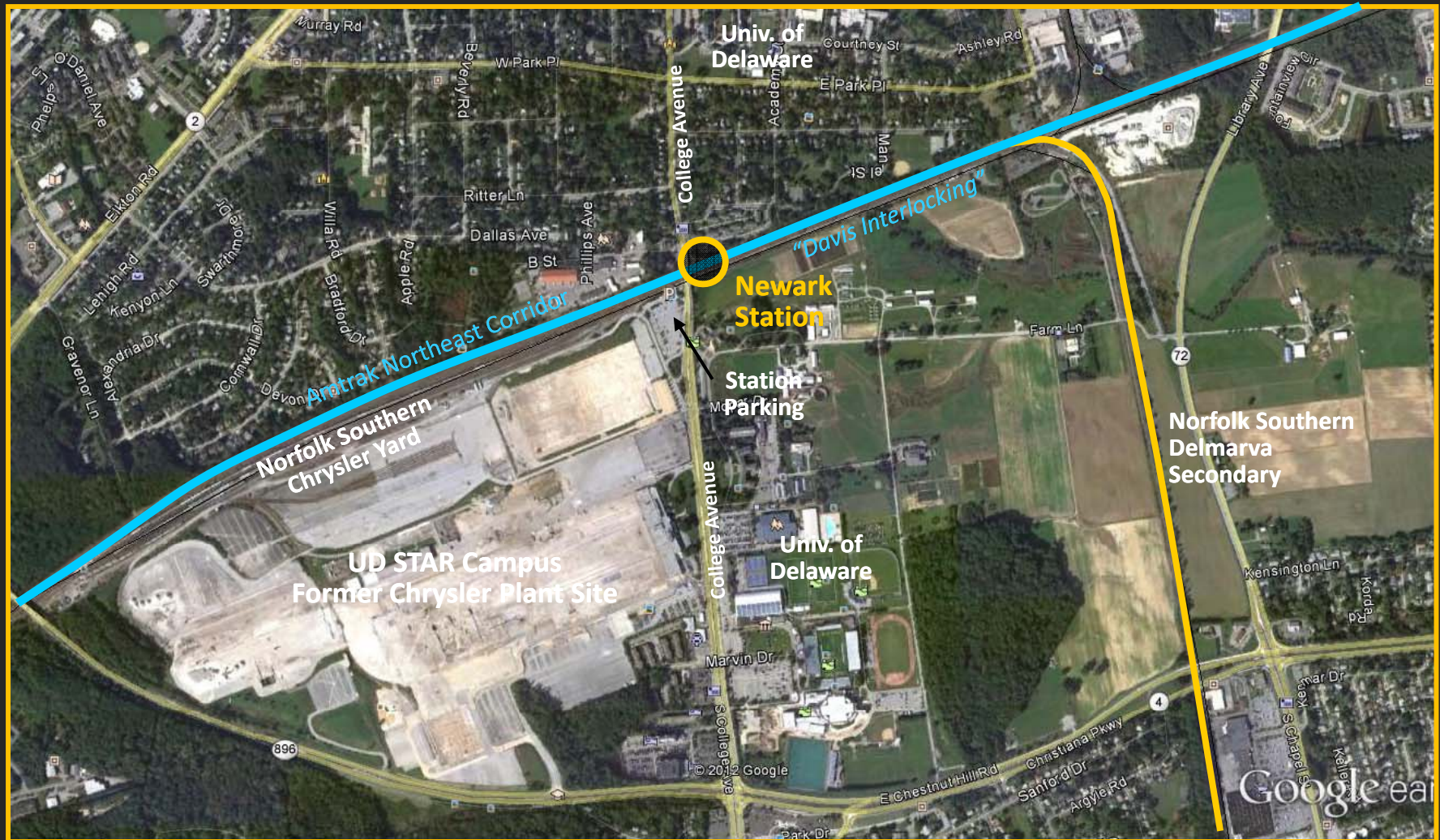
## Project Studies

- Delaware Rail Passenger Engineering Study, 2002
- Wilmington to Newark Commuter Rail Improvements, 2004
- Newark Train Station Feasibility Study, 2010
- Newark Regional Transportation Center Study, 2013



# Newark Regional Transportation Center

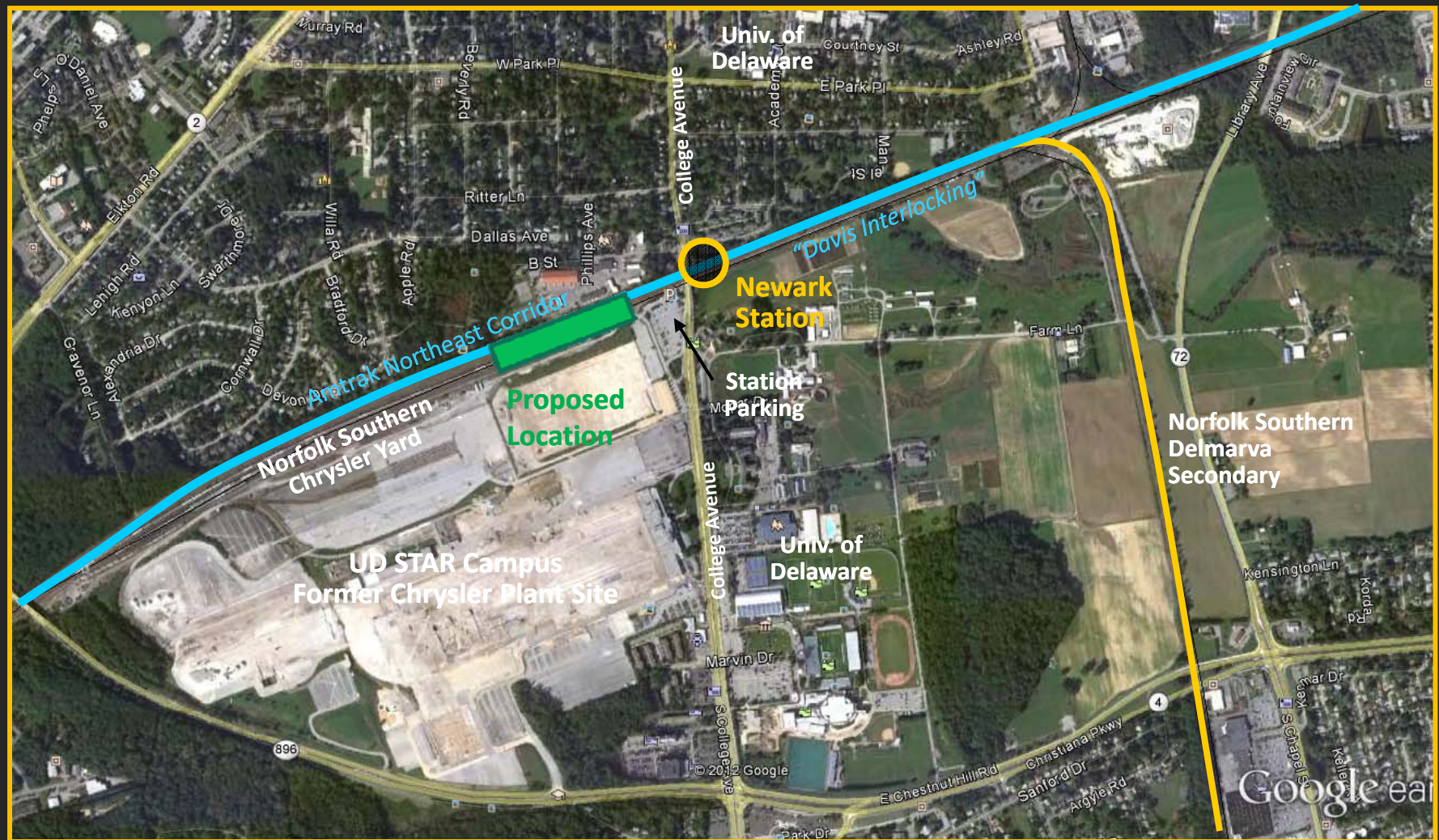
Existing Conditions





# Newark Regional Transportation Center

Existing Conditions





# Newark Regional Transportation Center

## Newark Train Station Study

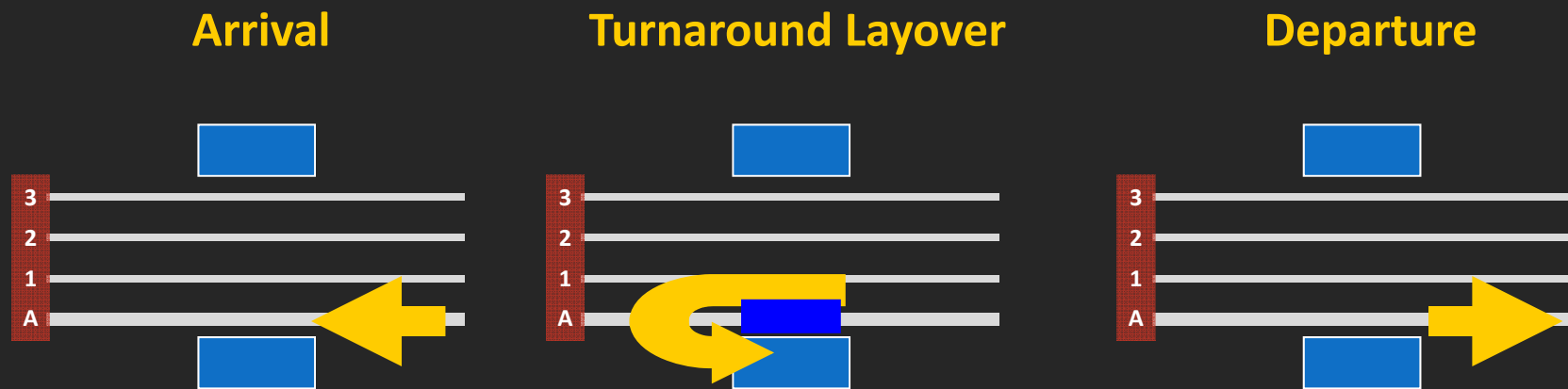
- Primarily an engineering and operational feasibility study
- Importance of study
  - UD Plans
  - Work within constraints of site
  - Build on previous studies
  - Opportunity for Newark
- A dual focus needed to address:
  - Conflicts between freight and commuter
  - How to accommodate expansion of passenger rail services



# Newark Regional Transportation Center

## Current SEPTA Operations

17 Trips per day/9 Trains

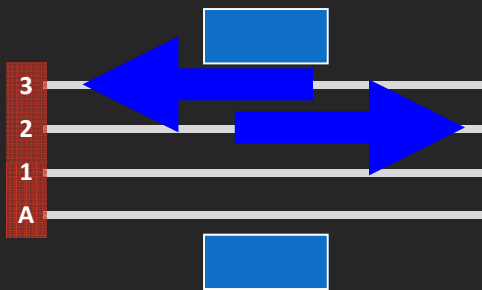


Morning and Evening Peak Periods Only

# Newark Regional Transportation Center

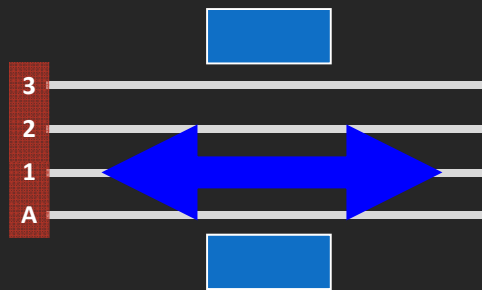
## Current Operations – Amtrak

### Non-stop Acela Express & Northeast Regional



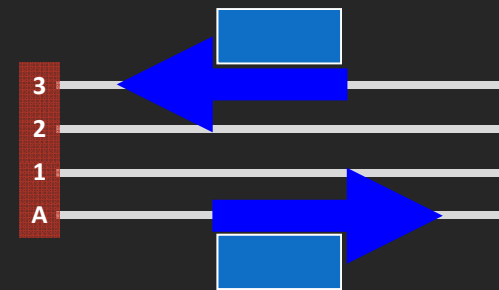
2 trains/hr. each way

### Non-stop Long Distance Trains Being Overtaken



Up to 6 trains/day  
each way  
(irregular timing)

### Northeast Regional Trains Stopping at Newark Station



2 trains/day each way

# Newark Regional Transportation Center

## Current Operations – Norfolk Southern

10 PM to 6 AM

?



6 AM to 2 PM

?



2 PM to 10 PM

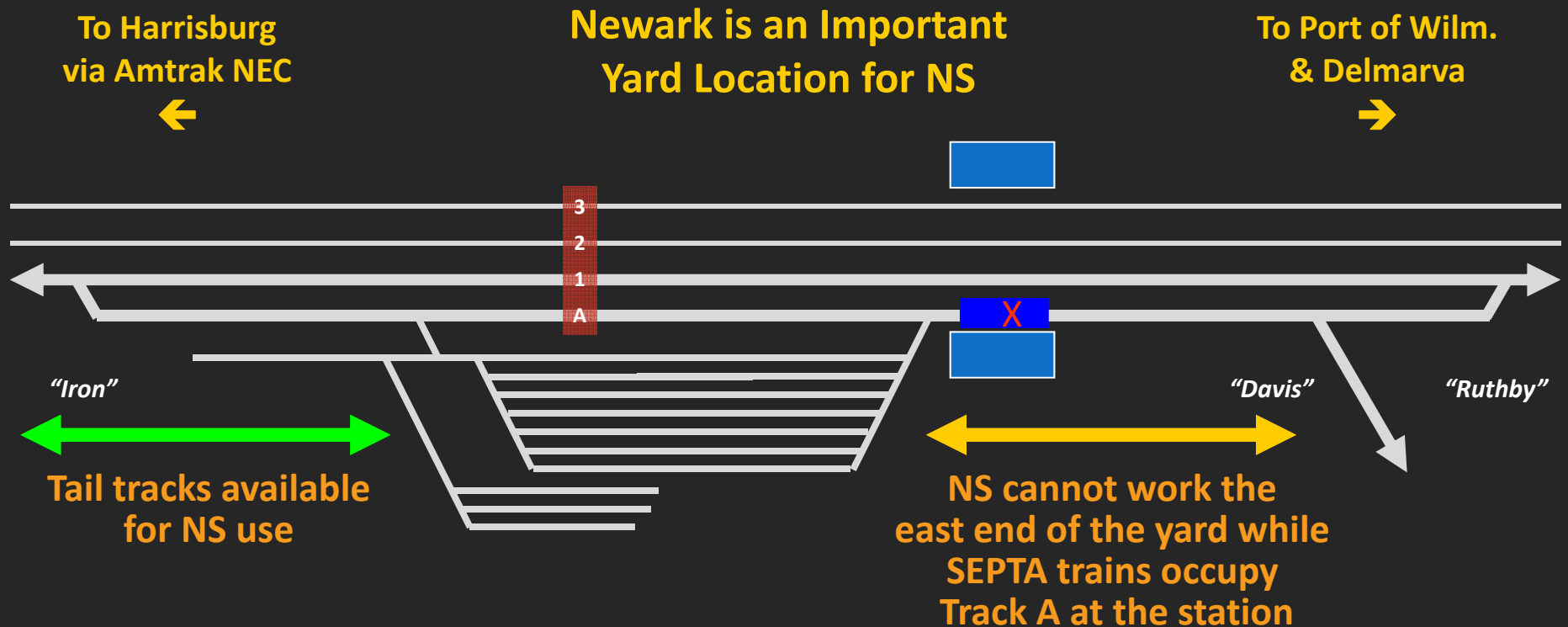
?





# Newark Regional Transportation Center

## Current Operations – Norfolk Southern



# Newark Regional Transportation Center

University of Delaware, Science, Technology & Advanced Research (STAR) Campus



# Newark Regional Transportation Center

## Study and Grant Components

- Feasibility Study (Phase I) completed in July 2010
- TIGER II Planning Grant awarded in December 2010
- NRTC Study (Phase II) currently underway
- TIGER IV Grant for construction awarded in June 2012





# Newark Regional Transportation Center

Many concepts created and discarded due to operational challenges

Figure 10. Full Build Platform Configuration – Option 1 Double Island Platforms

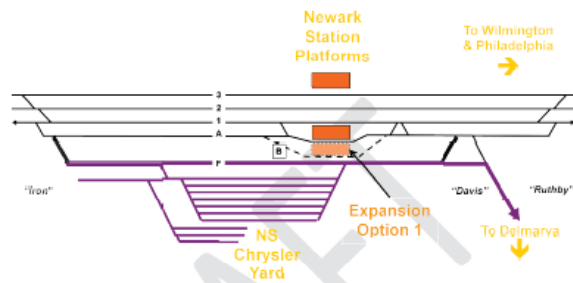
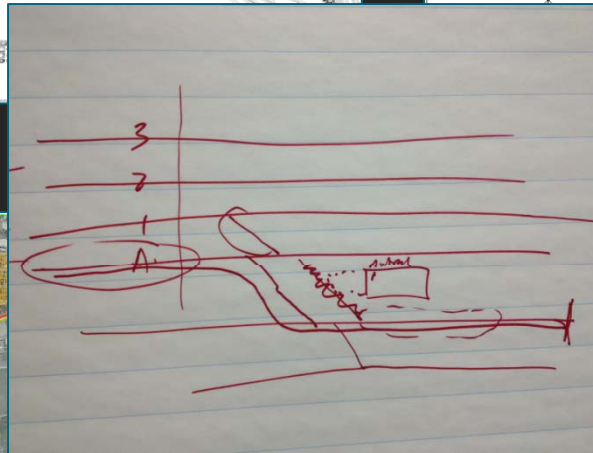
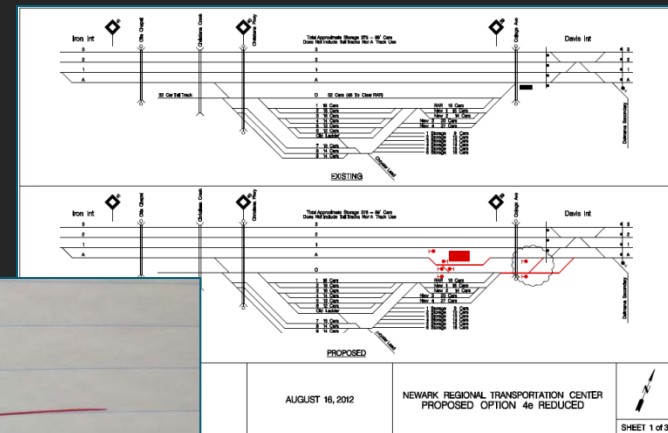
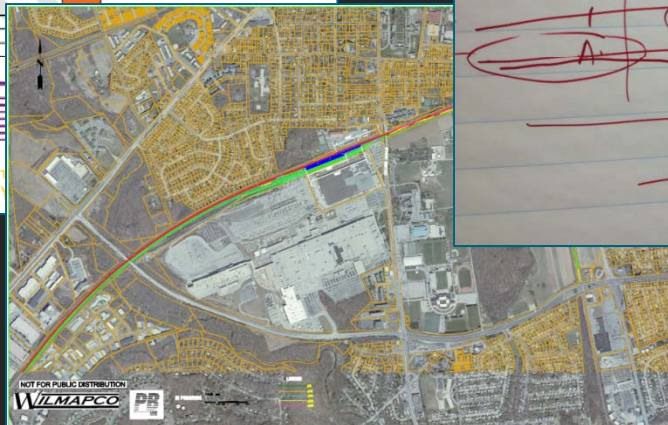
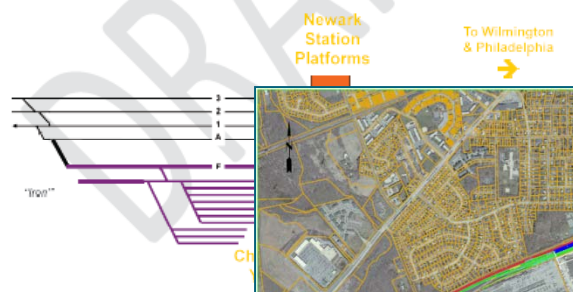
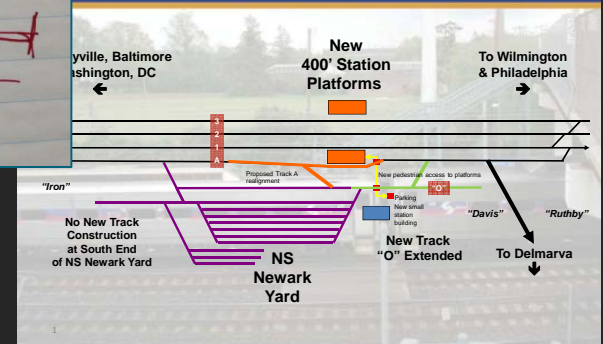


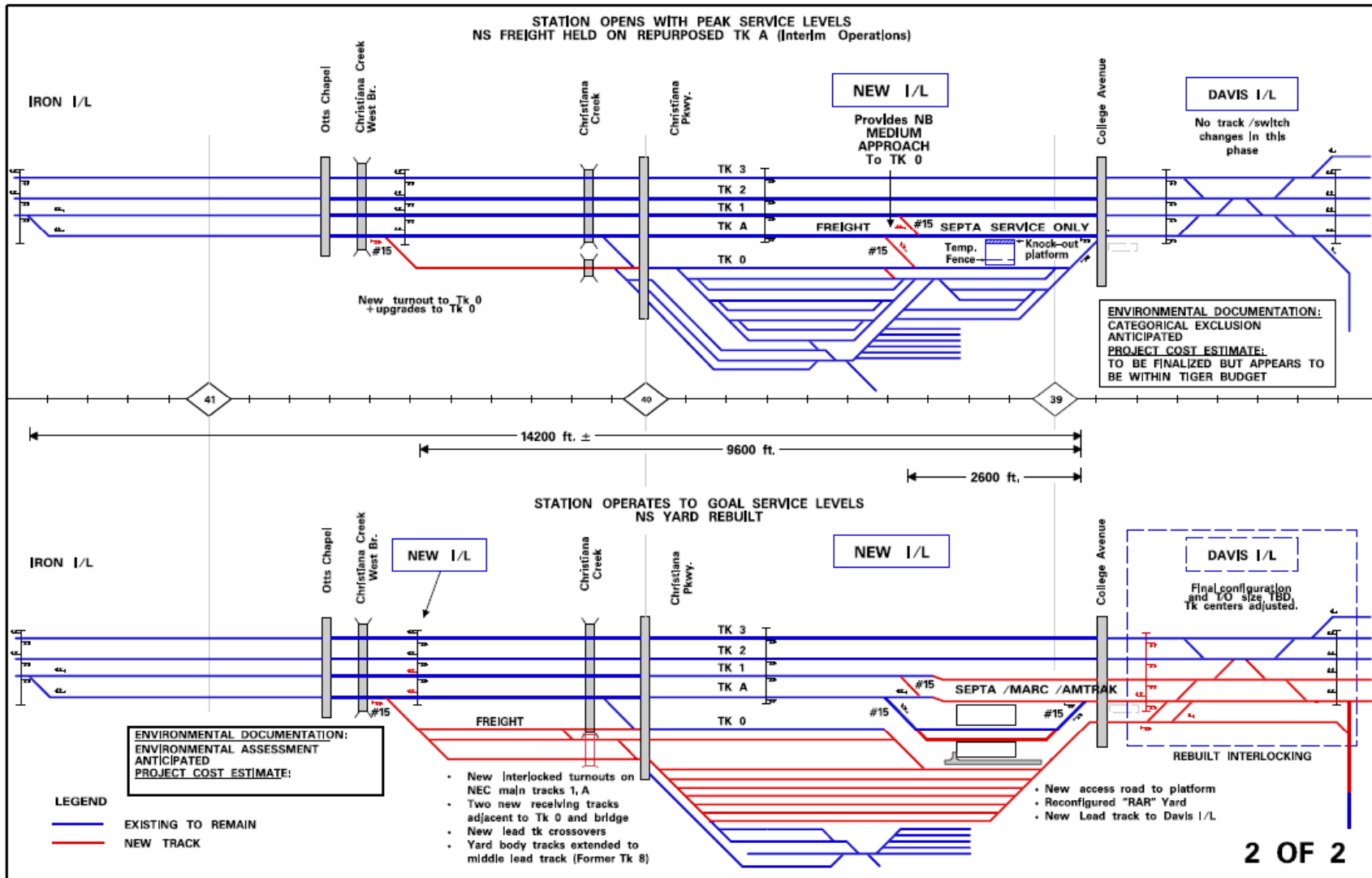
Figure 11. Proposed Full Build Platform Configuration – Option 2 Island and Side Platforms



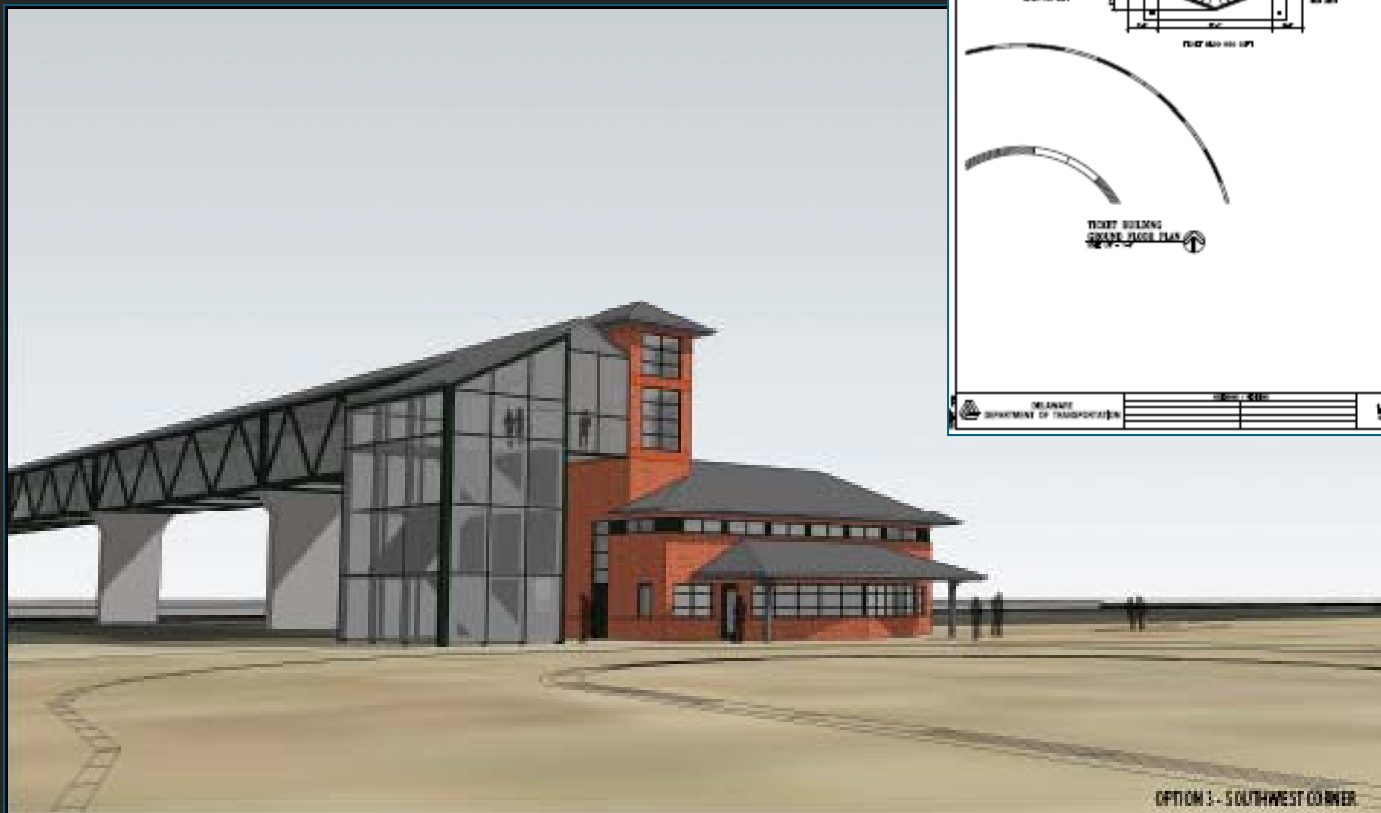
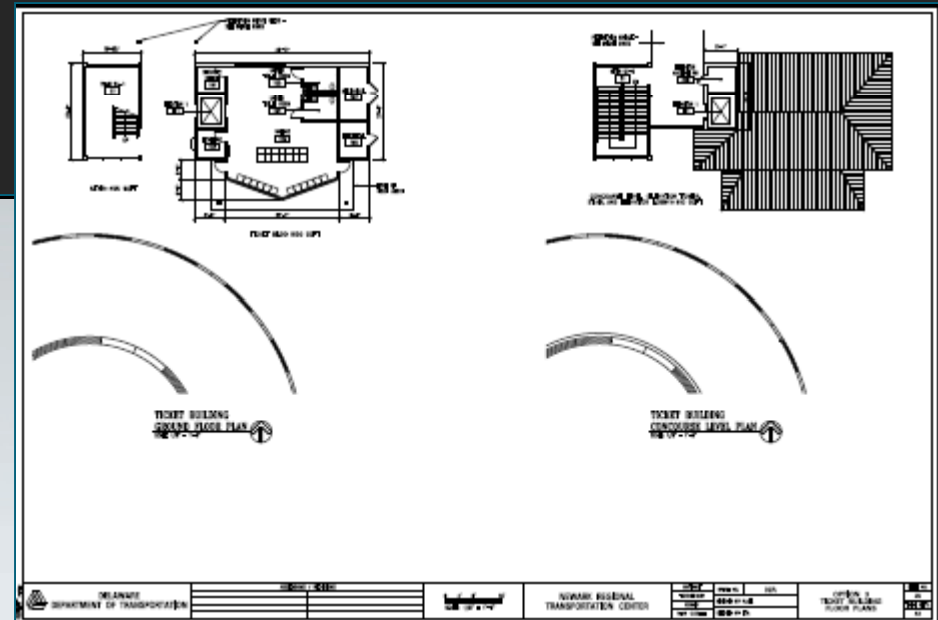
Option 4e – Original Phase 1 Plan Modified



# Recommended Track Approach:



# Recommended Station Concept:



OPTION 3 - SOUTHWEST CORNER



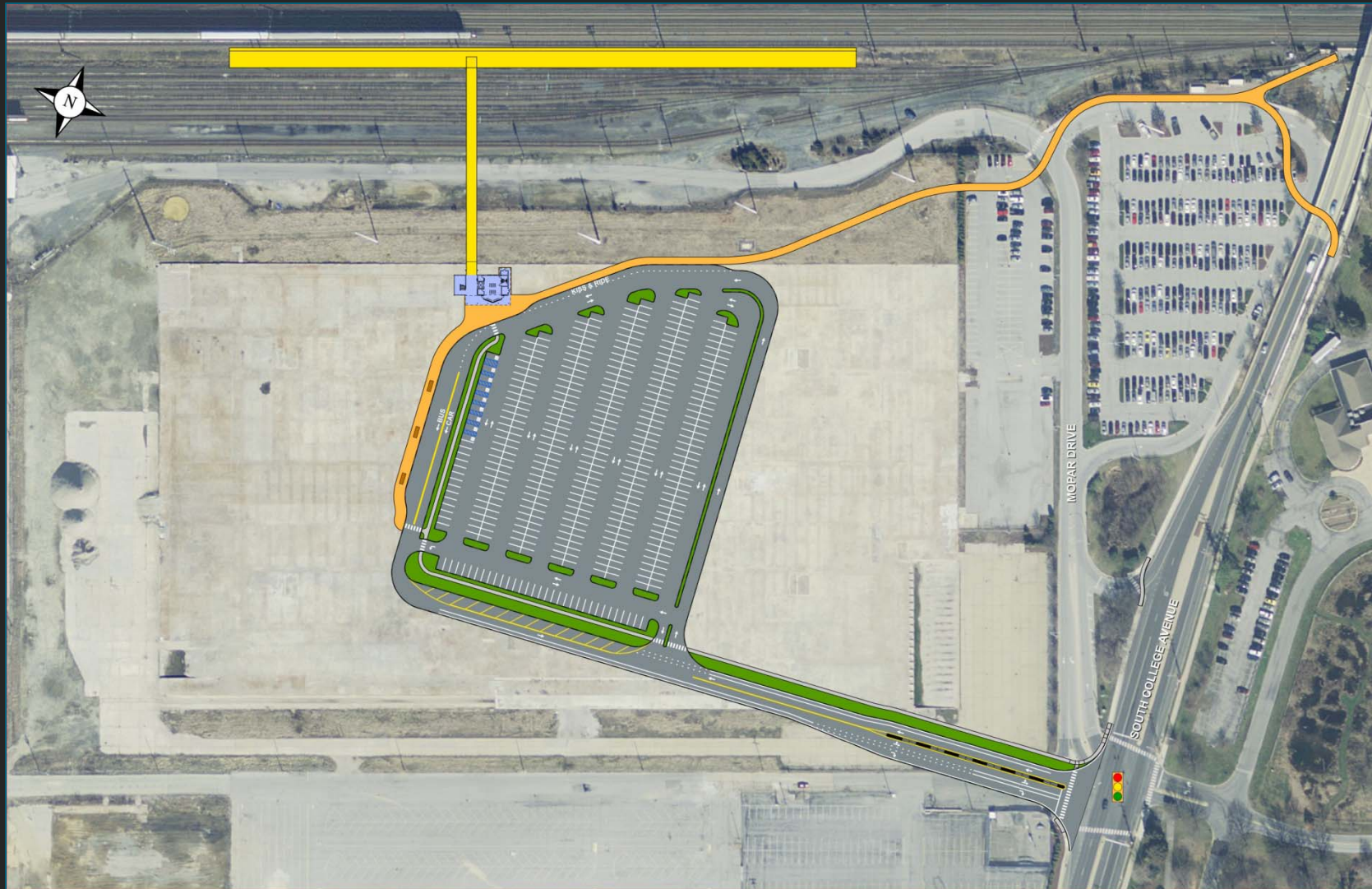
**NEWARK REGIONAL TRANSPORTATION CENTER**  
DELAWARE DEPARTMENT OF TRANSPORTATION



**WHITMAN, REQUARDT & ASSOCIATES, LLP**  
ENGINEERS • ARCHITECTS • PLANNERS  
EST. 1976



# Recommended Station Access Plan:




# Newark Regional Transportation Center

## Key Milestones for TIGER IV Grant

- NEPA Completion:  
January 2013, Approved April 2013
- Obligation of Grant Funds:  
June 30, 2013
- Start Construction:  
Fall 2014
- Complete Construction:  
Fall 2016 (estimated)





For more information on these projects, visit:  
[www.wilmapco.org/plans-and-reports](http://www.wilmapco.org/plans-and-reports)

Thank You!

Mark Tudor

Assistant Director, North Project Development  
DeIDOT

[mark.tudor@state.de.us](mailto:mark.tudor@state.de.us)

Dave Gula

Principal Planner, WILMAPCO  
[dgula@wilmapco.org](mailto:dgula@wilmapco.org)