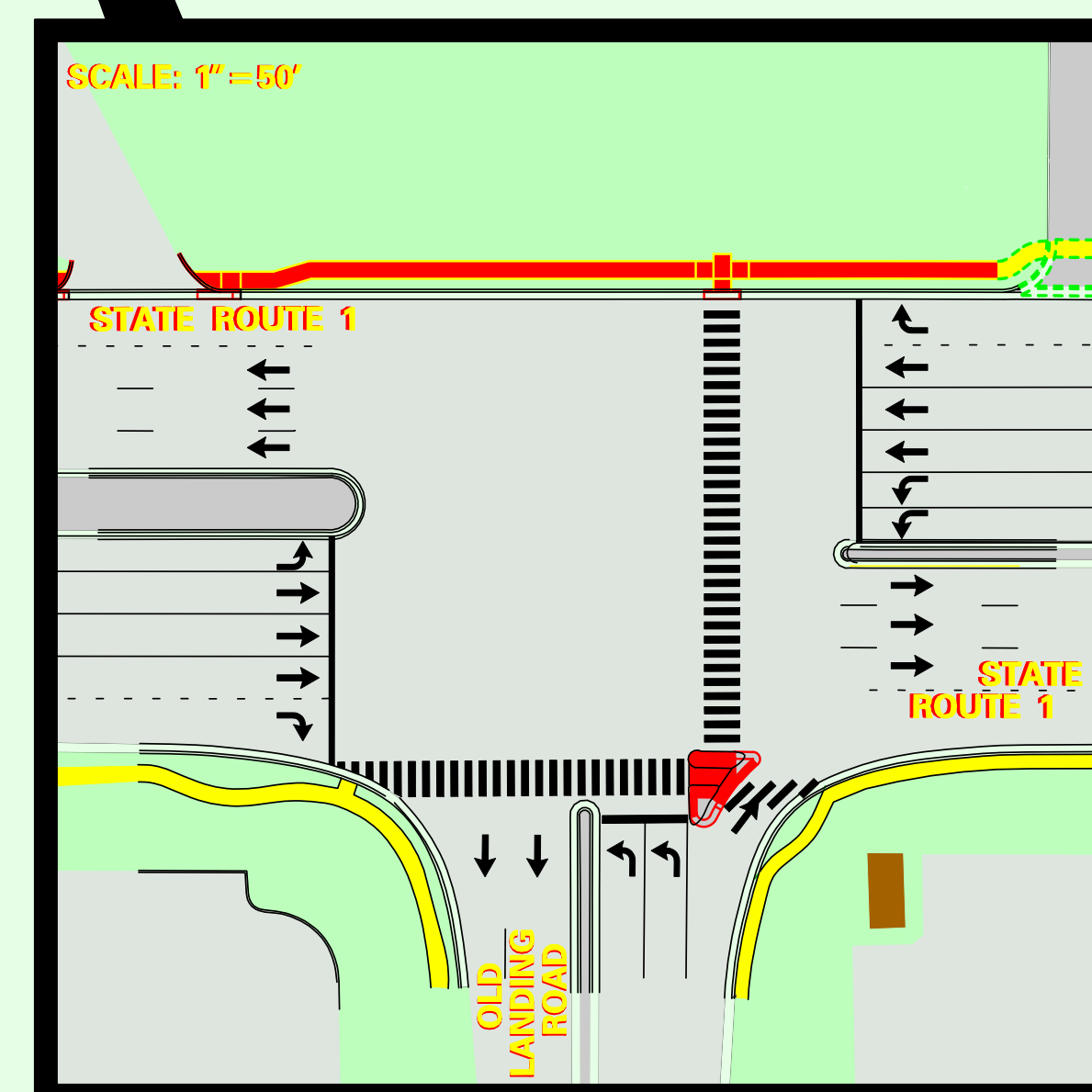


SR 1 – REHOBOTH CANAL TO NORTH OF US 9 (FIVE POINTS) PEDESTRIAN IMPROVEMENTS



| LEGEND | | | |
|--------|-------------------|--|--|
| | PROPOSED SIDEWALK | | RELOCATED BUS STOP |
| | EXISTING SIDEWALK | | EXISTING LUMINAIRE |
| | LIGHTING LIMITS | | PROPOSED LUMINAIRE FOR BUS STOPS & SIGNALS |
| | | | PROPOSED LUMINAIRE FOR CONTINUOUS LIGHTING |