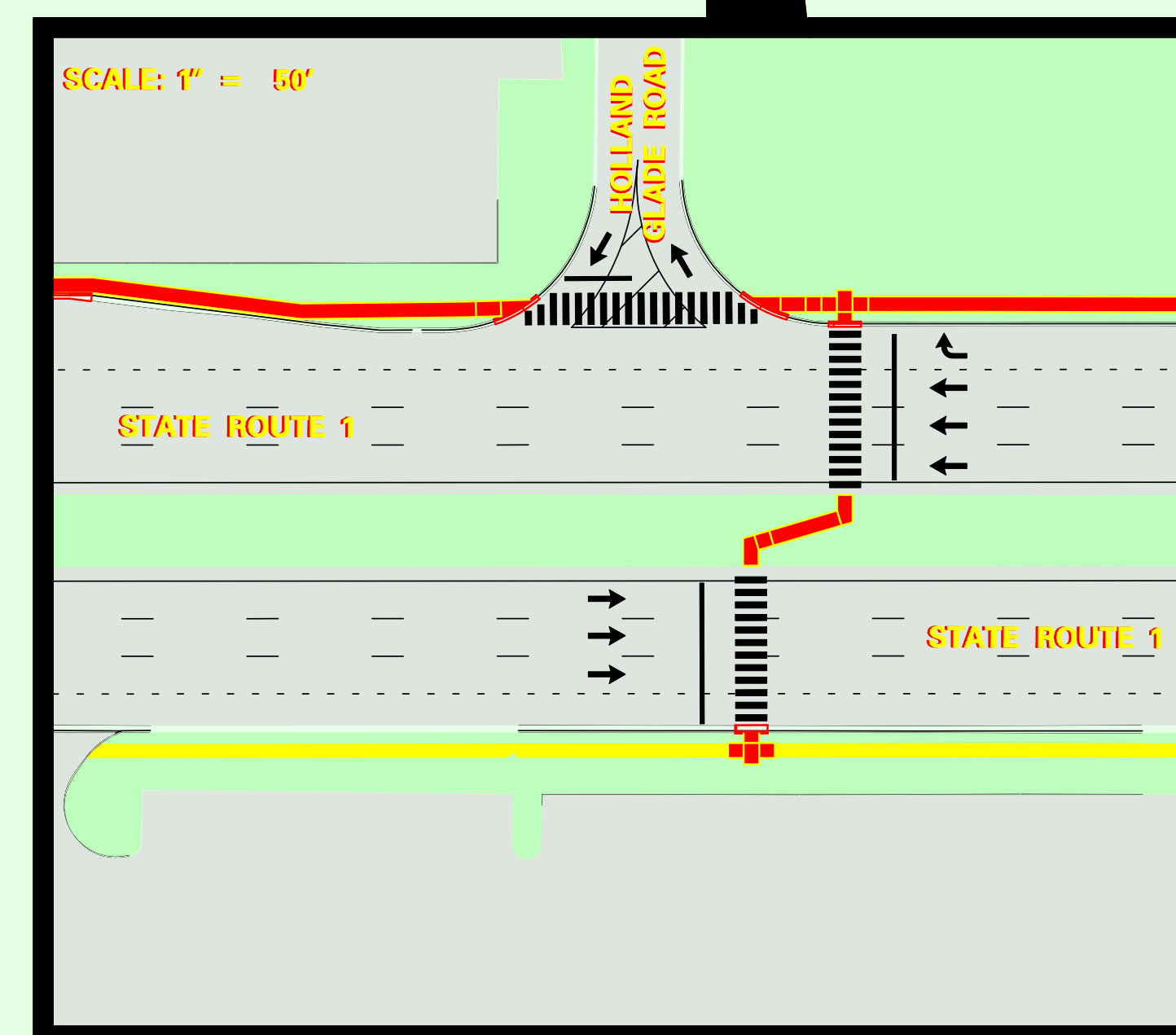
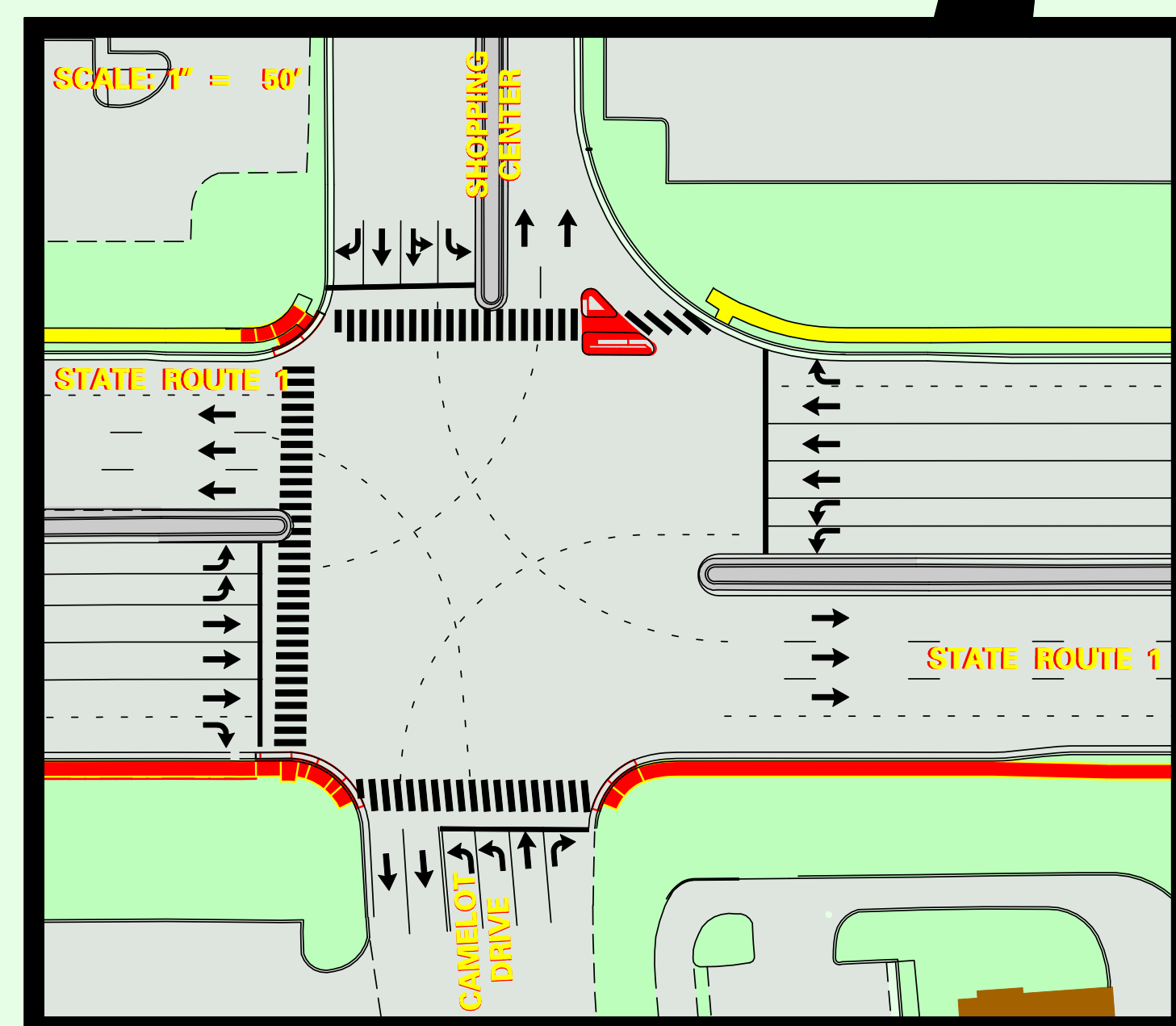


# SR 1 – REHOBOTH CANAL TO NORTH OF US 9 (FIVE POINTS) PEDESTRIAN IMPROVEMENTS



LEGEND			
	PROPOSED SIDEWALK		RELOCATED BUS STOP
	EXISTING SIDEWALK		EXISTING LUMINAIRE
	LIGHTING LIMITS		PROPOSED LUMINAIRE FOR BUS STOPS & SIGNALS
			PROPOSED LUMINAIRE FOR CONTINUOUS LIGHTING