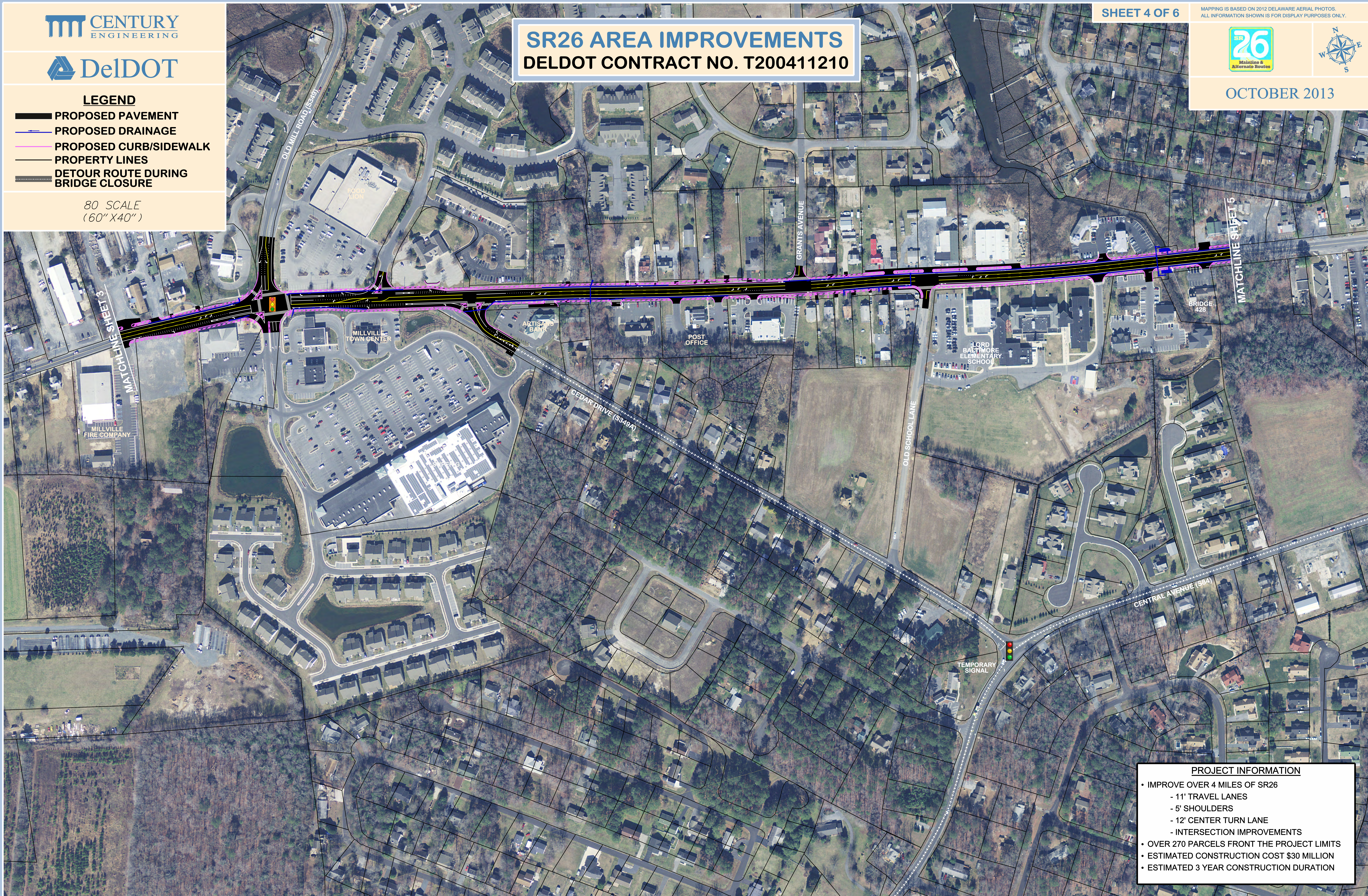


SR26 AREA IMPROVEMENTS
DELDOT CONTRACT NO. T200411210

LEGEND

- PROPOSED PAVEMENT
- PROPOSED DRAINAGE
- PROPOSED CURB/SIDEWALK
- PROPERTY LINES
- DETOUR ROUTE DURING BRIDGE CLOSURE

80 SCALE
(60" X 40")



PROJECT INFORMATION

- IMPROVE OVER 4 MILES OF SR26
 - 11' TRAVEL LANES
 - 5' SHOULDERS
 - 12' CENTER TURN LANE
 - INTERSECTION IMPROVEMENTS
- OVER 270 PARCELS FRONT THE PROJECT LIMITS
- ESTIMATED CONSTRUCTION COST \$30 MILLION
- ESTIMATED 3 YEAR CONSTRUCTION DURATION