

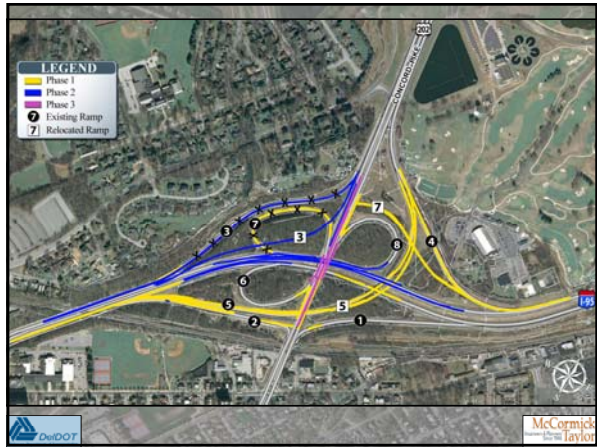


I-95 & US 202 Interchange Improvements

Presentation to:
North New Castle County Transportation Management Team
By: McCormick Taylor, Inc.
March 19, 2012



- Estimated Construction Schedule: Dec. 2011 to Dec. 2014
- Interchange Improvements:
 - Add lanes to I-95 ramps heading to and from US 202
 - Realign and reconstruct certain interchange ramps to address capacity and safety issues
 - Lower SB I-95 at US 202 to address existing clearance issue
 - Reconstruct US 202 bridge deck
 - Install new sign structures
 - Reconstruct pavement on I-95





I-95 & US 202 Interchange Improvements

- Work Zone Traffic Impacts During Construction:
 - Various lane shifts, reduced lane widths, and shoulder closures
 - Some off-peak lane closures (overnight and middle of day), but most of the time, all lanes will remain open
 - Closures of I-95, US 202, and some ramps required at times:
 - Estimated total of 6 weekends and 12 weeknights during entire three-year construction period, for bridge beam placements and removals
 - Ramp 8 from NB US 202 to SB I-95 will be closed for approx. 1 month
 - Occasional 15-minute stoppages of I-95 (during overnight hours)
 - I-495 will be recommended alternative route for I-95 through traffic
 - Detours will be posted for local traffic
 - Emergency Vehicle Access
- Construction to be completed in three phases, each with multiple stages



I-95 & US 202 Interchange Improvements

- **Phase 1: Begin December 2011**
 - Construct new Ramp 5 and remove existing Ramp 5
 - Widen Ramp 2
 - Widen NB I-95 approaching Ramps 2 and 5
 - Lengthen Ramp 6 accel lane onto NB I-95
 - Construct new Ramp 7 and remove existing Ramp 7
 - Reconstruct Ramp 4
- **Phase 2: Begin August 2013**
 - Construct new Ramp 3 and remove existing Ramp 3
 - Reconstruct and lower SB I-95 (Ramp 8 closed for one month)
- **Phase 3: Begin October 2013**
 - Reconstruct US 202 bridge deck
 - Mill and overlay pavement, place final pavement markings

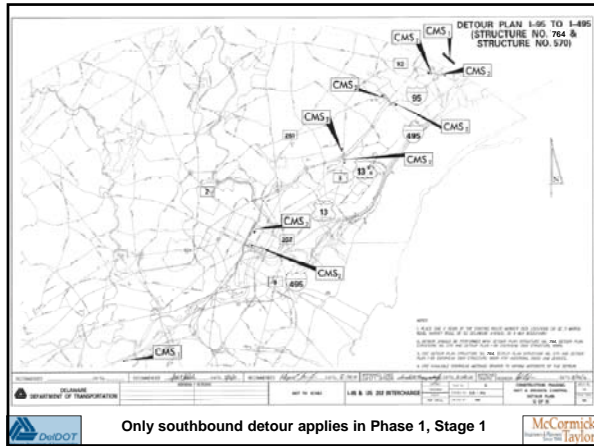
Traffic Impacts

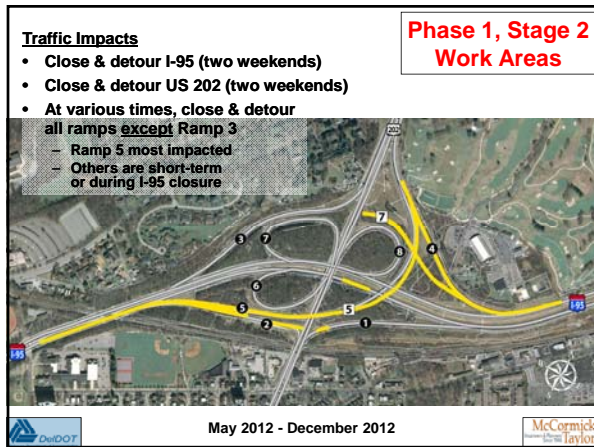
- Close & detour SB I-95 and Ramp 4 (weeknight overnight hours)

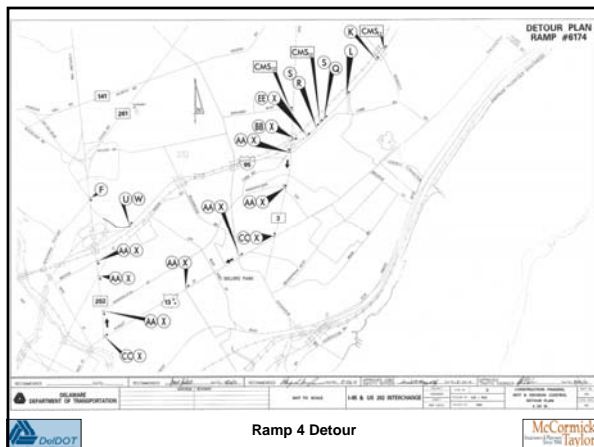
**Phase 1, Stage 1
Work Areas**

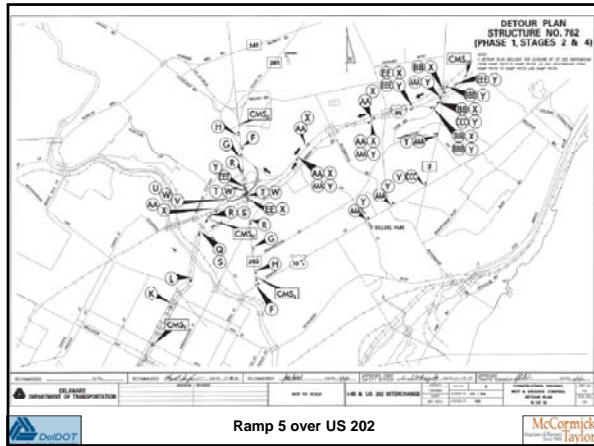
December 2011 – May 2012

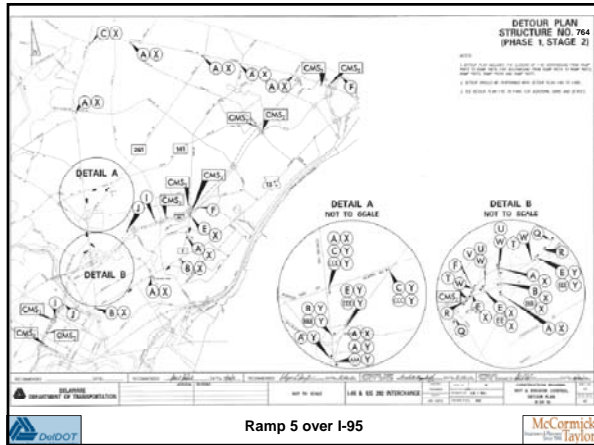
Existing sign structure at SB I-95 / Ramp 4

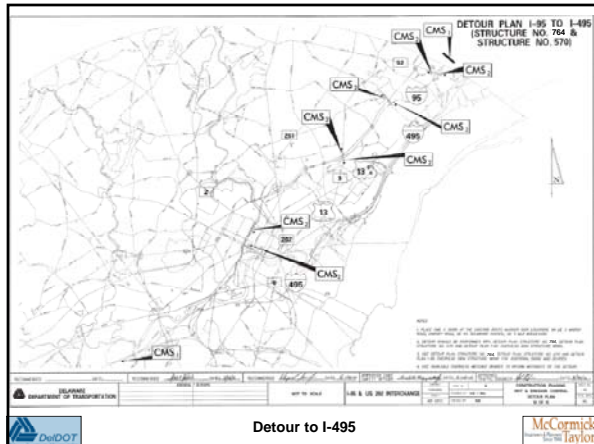


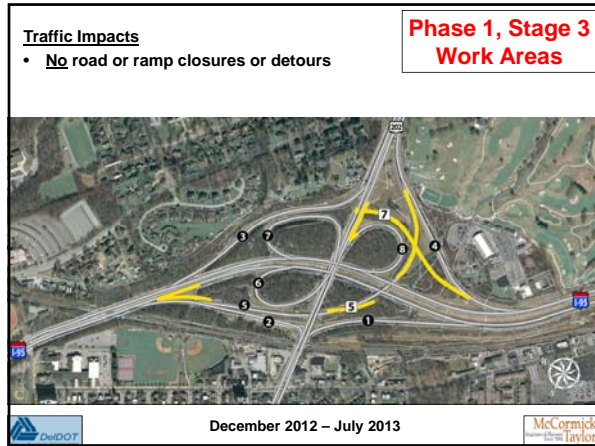


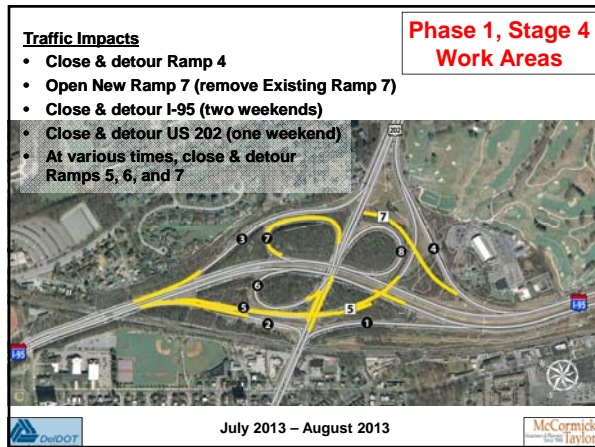


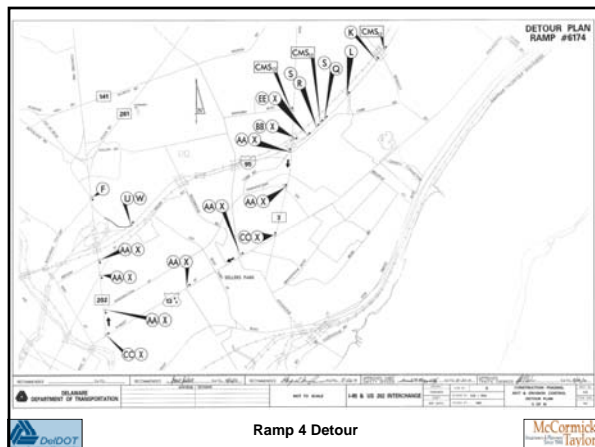


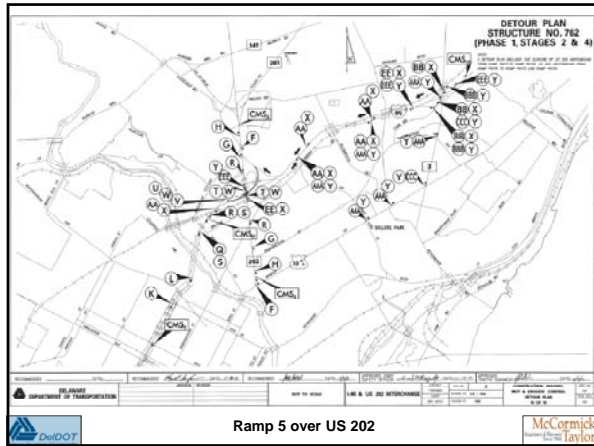


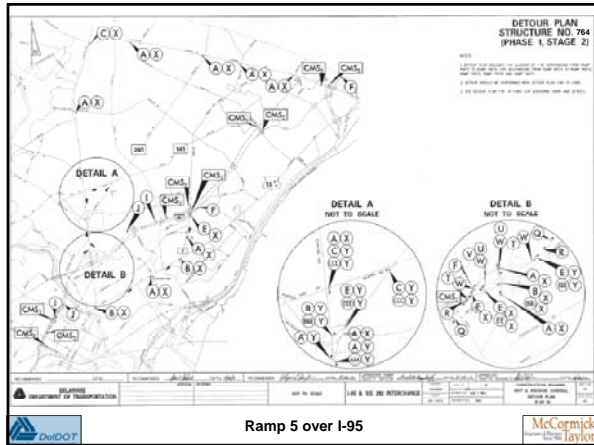


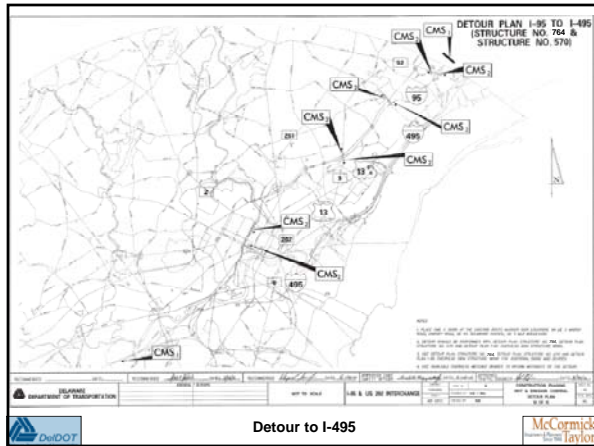


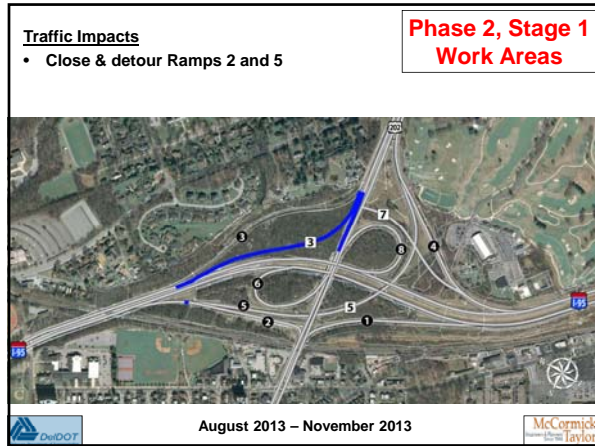


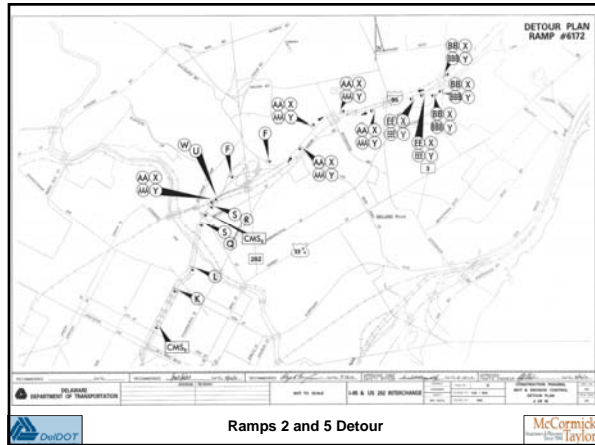


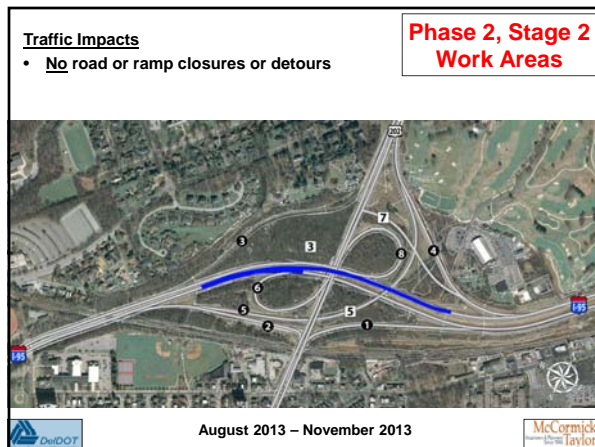













Traffic Impacts


- Close & detour Ramp 8 (continuously for approx. one month)

**Phase 2, Stage 3
Work Areas**



December 2013

McCormick Taylor




Ramp 8 Detour (only long-term detour in project)

McCormick Taylor

Traffic Impacts

- No road or ramp closures or detours
- Open New Ramp 3 (remove Existing Ramp 3)

**Phase 2, Stage 4
Work Areas**



January 2014 – February 2014

McCormick Taylor

Traffic Impacts

- **No** road or ramp closures or detours

**Phase 2, Stage 5
Work Areas**

January 2014 – February 2014

Traffic Impacts

- **No** road or ramp closures or detours
- Lane and shoulder closures & lane shifts for US 202 median work

**Phase 3, Stage 1
Work Areas**

November 2013 – May 2014

Traffic Impacts

- Lane and shoulder closures & lane shifts (work on SB US 202)
- Close & detour I-95 and Ramps 6 & 8 (six weeknights overnight)

**Phase 3, Stage 2
Work Areas**

May 2014 – September 2014

