

16



MILLSBORO-SOUTH AREA RESOURCES



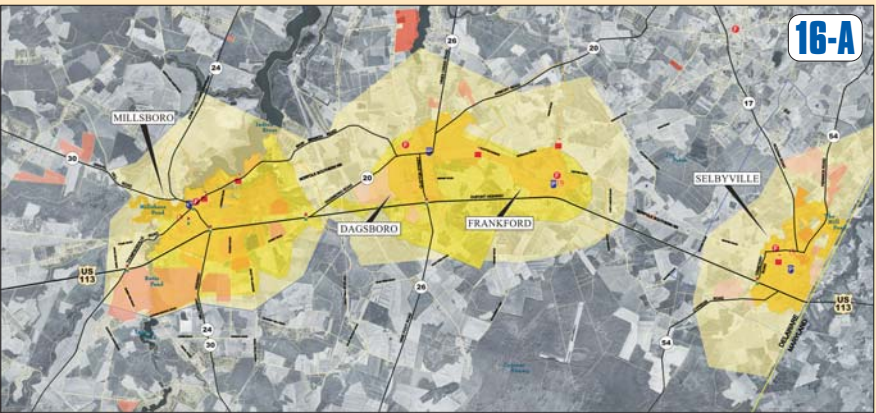
16

113

US 113 North / South Study



Planning Information / Community Facilities



Mapping
- Date of Mapping - 2002
- Road Network (US Routes, State Routes, Local Roads and Traffic Signals)
- Property Lines (Kent and Sussex Counties Tax Assessment Files)
- Planning Resources
- Municipal Boundaries
- Future Development (Municipal Comprehensive Plans)
- Delaware Office of State Planning Coordination (OSP) Designations - State Strategies for Policy and Spending
- Community (similar to Municipal boundaries, near term)
- Developing Area (similar to Future Development in Comprehensive Plans - next 20 years)

Planning Resources
- Secondary Growth (20 years - Long-Term)
- Rural (everything else)
- Municipal Water
- Sewer
- Public Schools (K-12)
- Libraries (1 site)
- Fire Stations (2 sites)
- Police Stations (2 sites)
- Hospitals (1 site)
- Public Schools (K-12)
- Libraries (1 site)

Development
- Development Approved - may be under construction since Spring 2002
- Development in Process of Approval - Pending
- Property that may be developed in the near future

Land Use



Urban / Built-Up
- Residential
- Commercial
- Industrial (includes excavated borrow pits)

Institutional / Government
- Agricultural
- Transportation / Communication
- Forest / Open Space
- Wetlands / Waters

Socio-Economic



Resources Protected By Federal Executive Order 12896 (2/11/94)
- 2002 U.S. Census Data (Census Tracts)
- Ethnic Distribution by Census Tract
- Age Distribution
- Low Income Distribution
- Mobile Home Sites

Environmental Protection Agency (EPA) Site
- Hazardous Waste
- Solid Waste
- Liquid Underground Storage Tanks
- National Pollutant Discharge Elimination System (NPDES) (Municipal and Industrial Outfalls)

Wetlands / Aquatic



Resources Protected By Section 404 of the Federal Clean Water Act (CWA)
- Army Corps of Engineers Section 404(g) guidelines
- Avoid Wetlands, Mitigate
- Minimize Wetlands
- Wetlands, defined by:
- Hybrid Soils (Tidal Marshes)
- Vegetation (Red Maple, Button Bush, Bull Rush)
- Hydrology (ground or surface water sources)

Types of Wetlands
- Estuarine (tidal waters, tidal wetlands, salt marshes)
- Lacustrine (lakes, ponds)
- Palustrine (non-tidal wetlands, marshes, non-tidal wetlands)
- Riverine (rivers, creeks, sloughs, streams)
- 100-year Floodplains - Federal Emergency Management Administration (FEMA)

Note:
Wetlands Source: Delaware Department of Natural Resources and Environmental Control 1995.
Wetlands based on 2002 aerials available Fall 2004.

Protected Lands & Resources



Resources Protected By Section 7 of Federal Endangered Species Act
- Rare, Threatened and Endangered Species (RTE'S) (State and Federal)
- Birds, Animals, Plants, Fish, and Natural Communities (Special Environments)

Natural Areas (State-Defined Voluntary Protections)
- State Reserve Areas (State Protected Lands, State Parks, Conservation Landmarks, Nature Preserves, Leased Lands, Fish & Wildlife Areas)

Terrestrial



Resources Protected By Delaware Agricultural Lands Preservation Act
- Agricultural Development Rights
- Agricultural Districts

Agriculture Suitability / Prime Farm Soils / Land Evaluation Site Assessment (LESA) / Quality of Land for Agricultural Purposes / Agricultural Preservation Suitability
- Very High - Low (not shown)
- High
- Very Low (not shown)
- Domestic Farm Wells