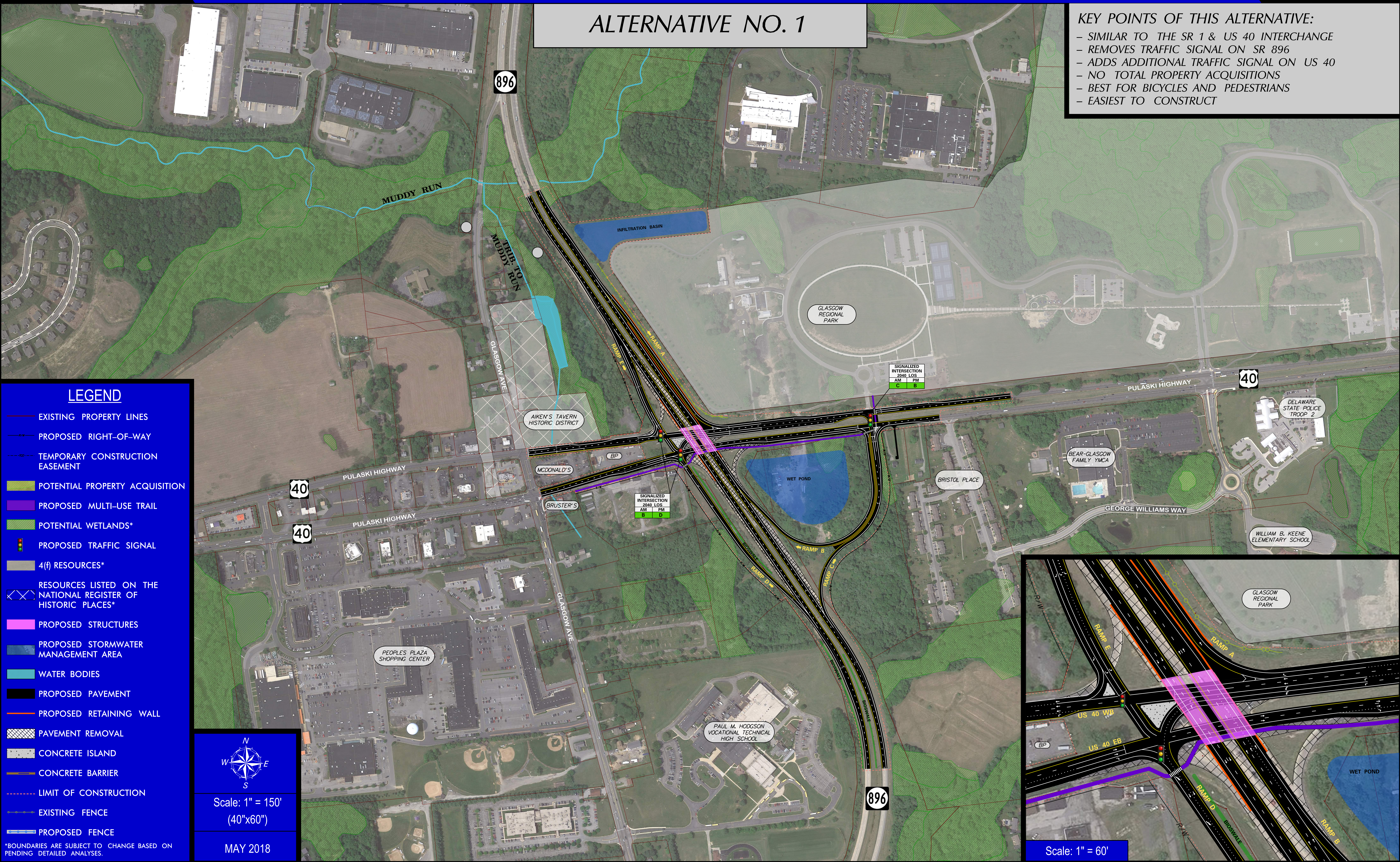


## ALTERNATIVE NO. 1

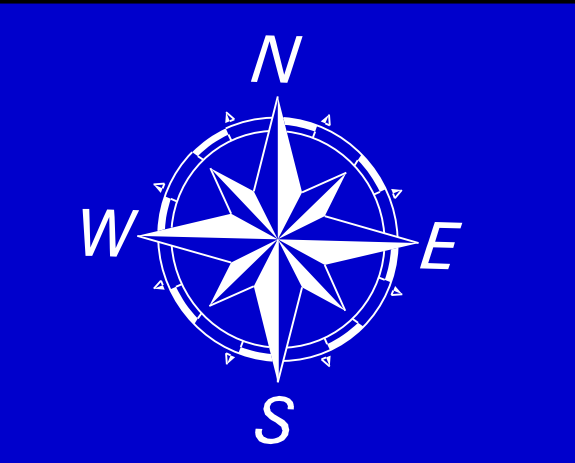
### KEY POINTS OF THIS ALTERNATIVE:

- SIMILAR TO THE SR 1 & US 40 INTERCHANGE
- REMOVES TRAFFIC SIGNAL ON SR 896
- ADDS ADDITIONAL TRAFFIC SIGNAL ON US 40
- NO TOTAL PROPERTY ACQUISITIONS
- BEST FOR BICYCLES AND PEDESTRIANS
- EASIEST TO CONSTRUCT



### LEGEND

- EXISTING PROPERTY LINES
- PROPOSED RIGHT-OF-WAY
- TEMPORARY CONSTRUCTION EASEMENT
- POTENTIAL PROPERTY ACQUISITION
- PROPOSED MULTI-USE TRAIL
- POTENTIAL WETLANDS\*
- PROPOSED TRAFFIC SIGNAL
- 4(f) RESOURCES\*
- RESOURCES LISTED ON THE NATIONAL REGISTER OF HISTORIC PLACES\*
- PROPOSED STRUCTURES
- PROPOSED STORMWATER MANAGEMENT AREA
- WATER BODIES
- PROPOSED PAVEMENT
- PROPOSED RETAINING WALL
- PAVEMENT REMOVAL
- CONCRETE ISLAND
- CONCRETE BARRIER
- LIMIT OF CONSTRUCTION
- EXISTING FENCE
- PROPOSED FENCE



Scale: 1" = 150'  
(40"x60")

MAY 2018

\*BOUNDARIES ARE SUBJECT TO CHANGE BASED ON PENDING DETAILED ANALYSES.

Scale: 1" = 60'