



# WELCOME

## Kent County Transportation Master Plan Study Public Workshop

November 20, 2019



## Public Workshop – November 20, 2019

**Welcome** to the Public Workshop for the Kent County Transportation Master Plan Study. DeIDOT has initiated this study to analyze existing and future (Year 2045) traffic within the vicinity of South Frederica and Little Heaven along SR 1, as well as, connecting roadways.

As part of this study, DeIDOT would like to hear from you! We can count the vehicle traffic and analyze the data, but we need input from those who live and work in and around the study area. Your thoughts on the potential roadway improvements are very helpful to the study. At the end of the workshop, please take a moment to offer your feedback.



## Purpose

- *Coordinate with Kent County on the Implementation of the Kent County Comprehensive Plan*
- *Assist the County in Smart Growth Initiatives for New Development*
- *Develop a Transportation Network to Proactively Meet Potential New Development and Growth Needs*



Start of Study: August 2019



Current Phase

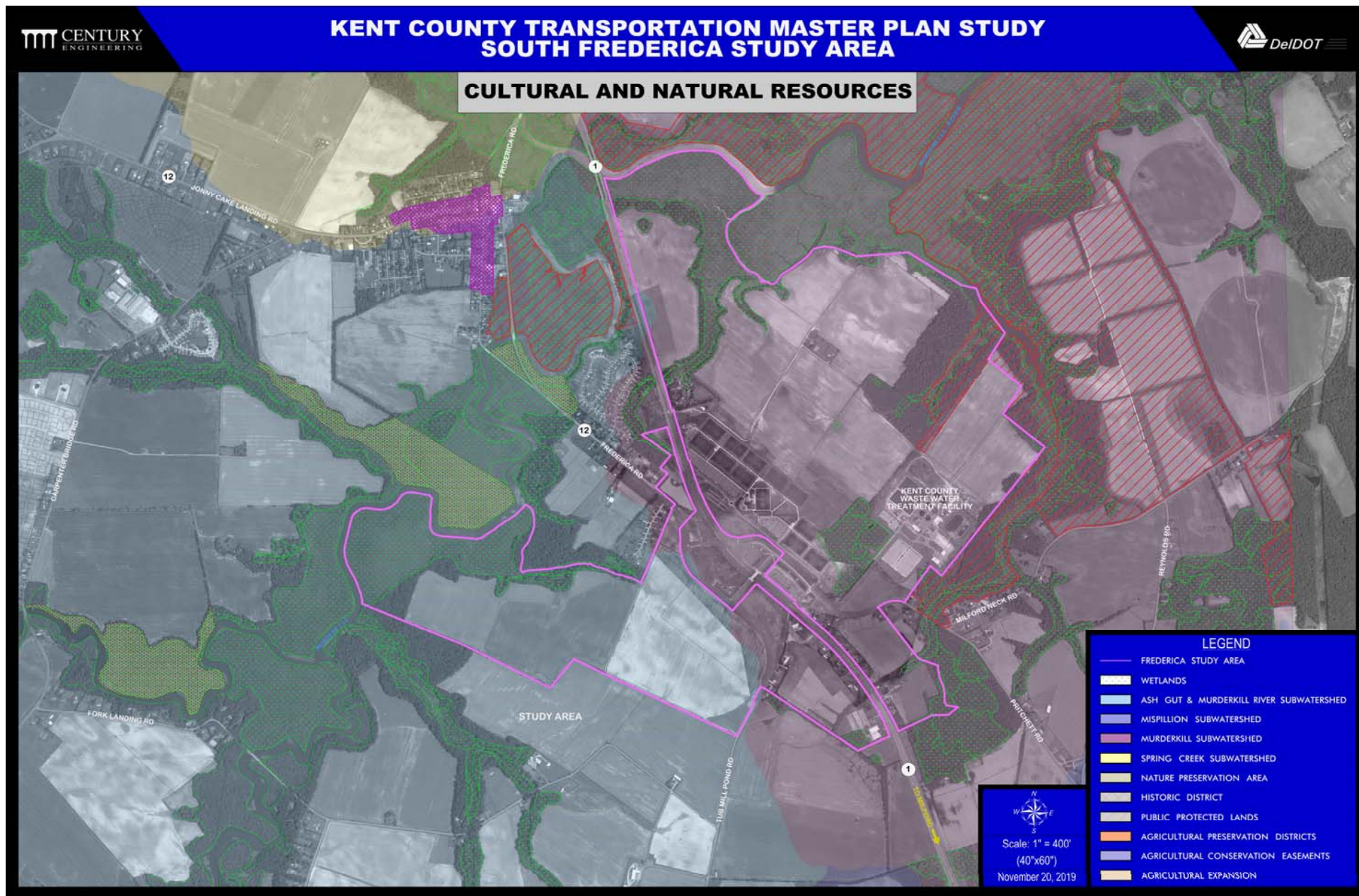
Summer 2020

## Study Areas



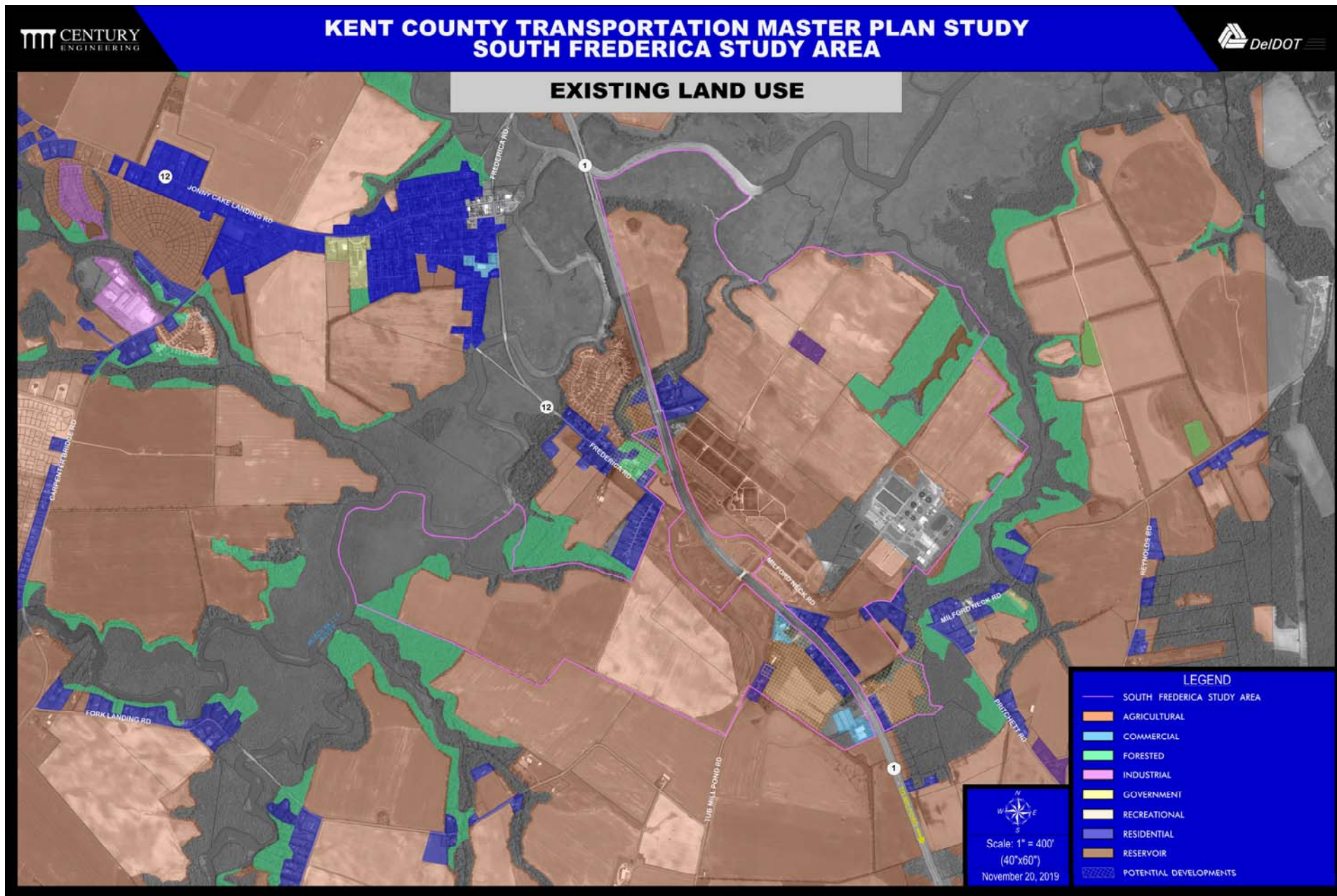


## Environmental Resource Map - South Frederica



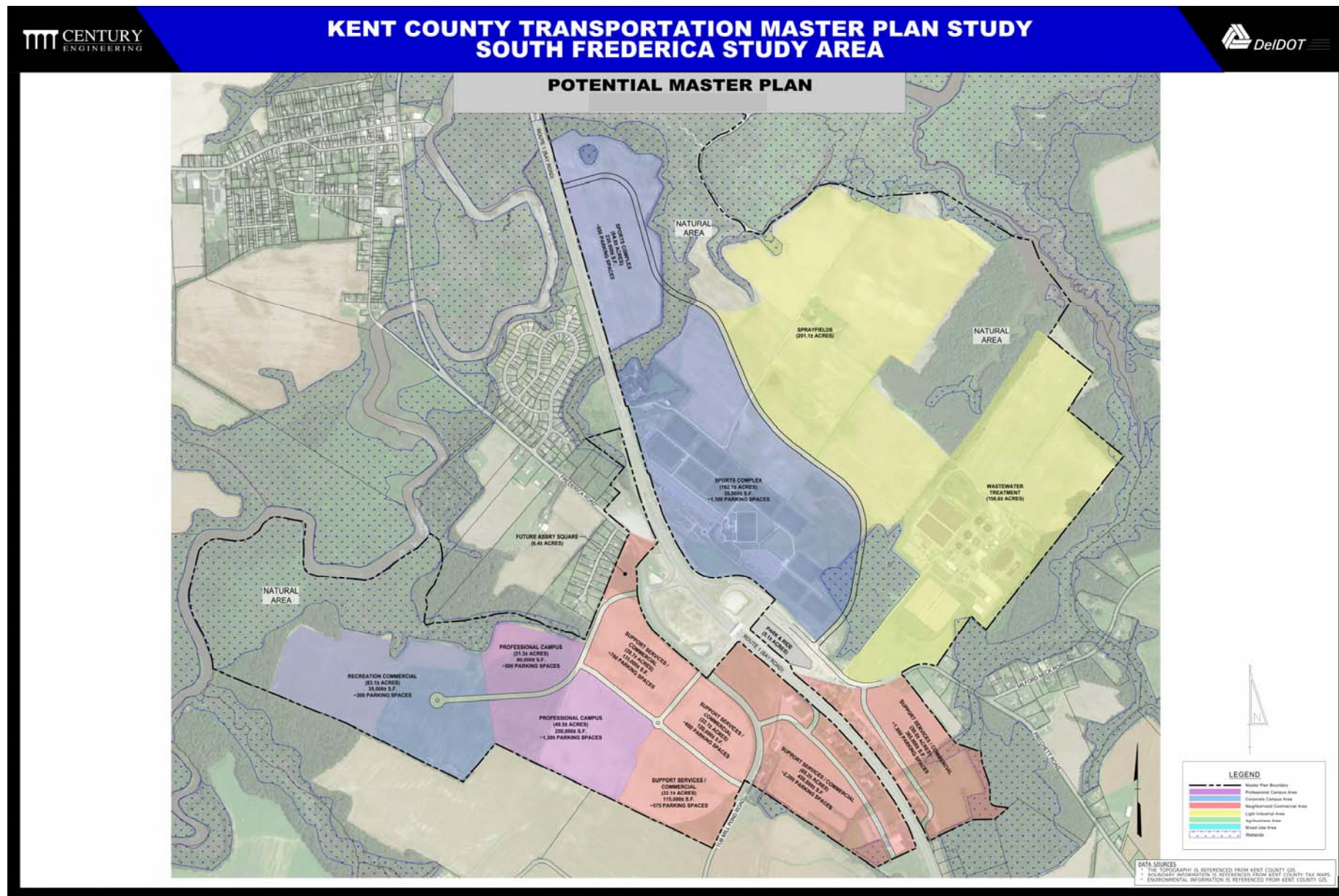


## Existing Land Use Map - South Frederica





## Kent County Proposed Land Use Map - South Frederica

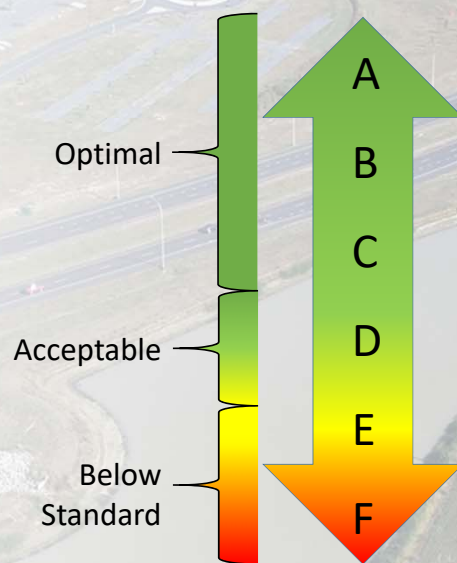




## What is Level of Service (LOS)?

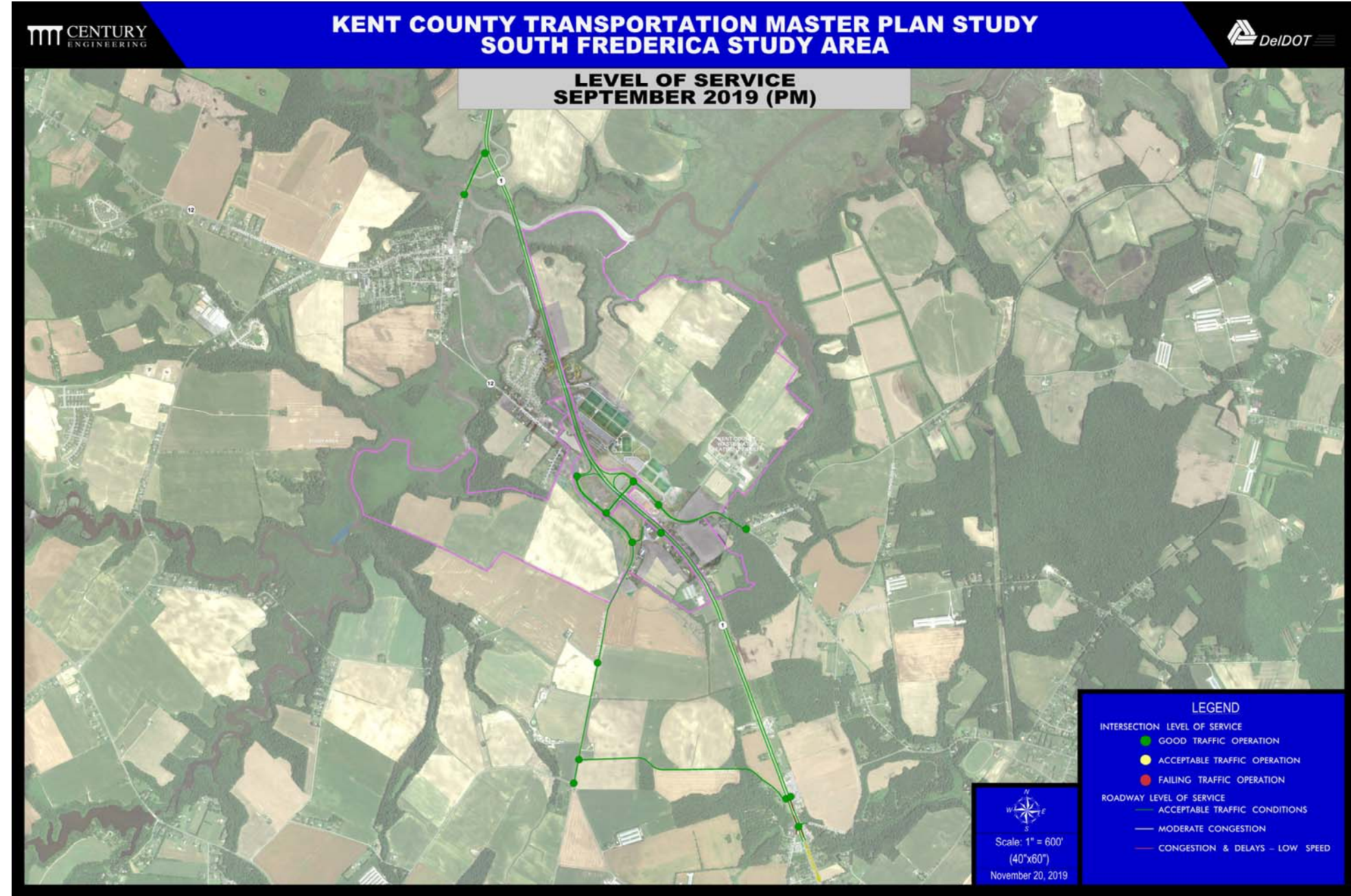
- LOS measures how well traffic moves along a roadway or through a signalized intersection for all movements. LOS is based on vehicle delay and speed, which reflects the relative ease of traffic flow on a scale from A to F. Level D is the design standard minimum acceptable LOS for peak hour traffic volumes in the Design Year.

Level	Traffic Condition
A	Free Flow Condition
B	Reasonably Free Flow
C	Stable Flow
D	Approaching Unstable Flow
E	Restricted Flow
F	Highly Congested



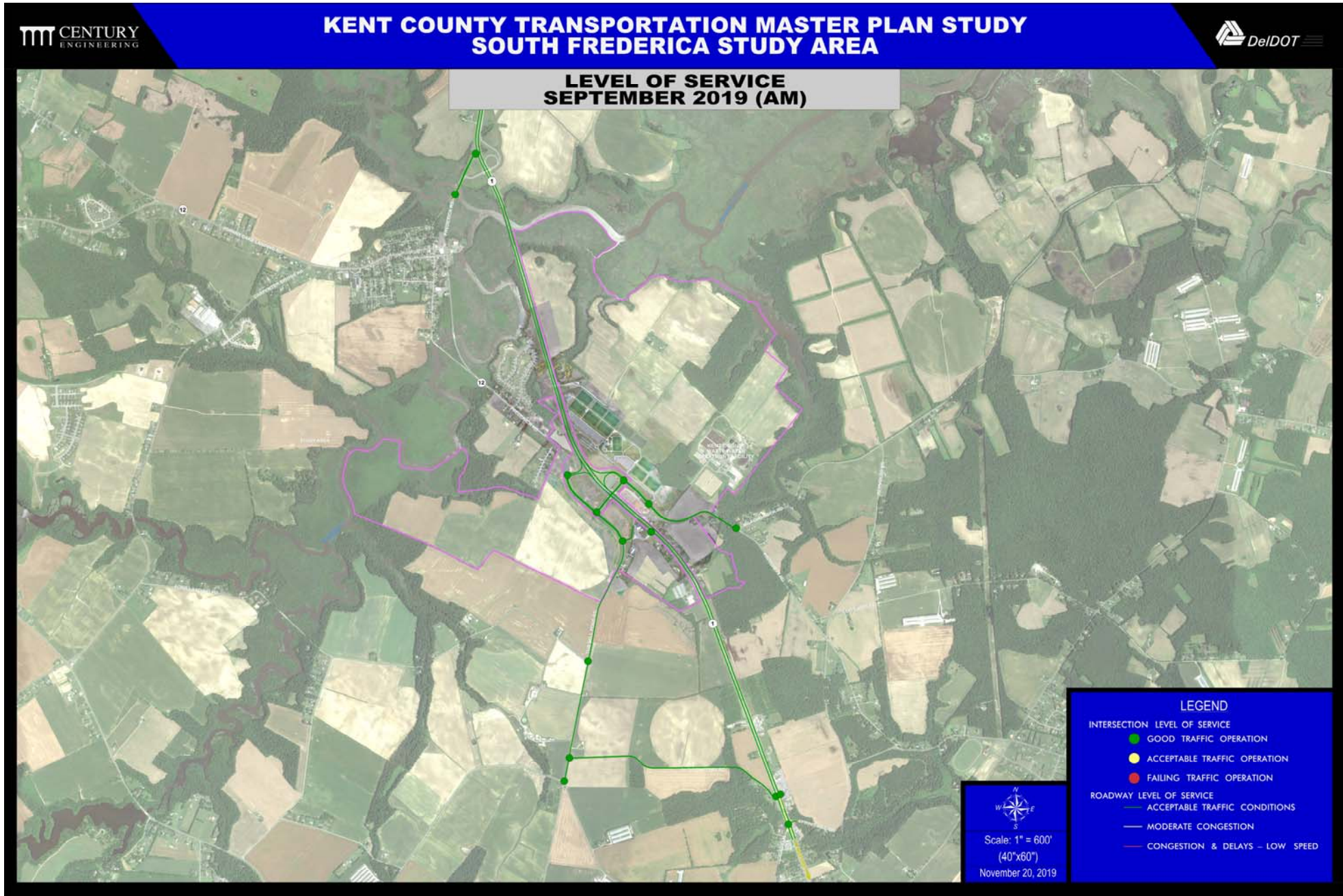


## Level of Service (PM) - South Frederica



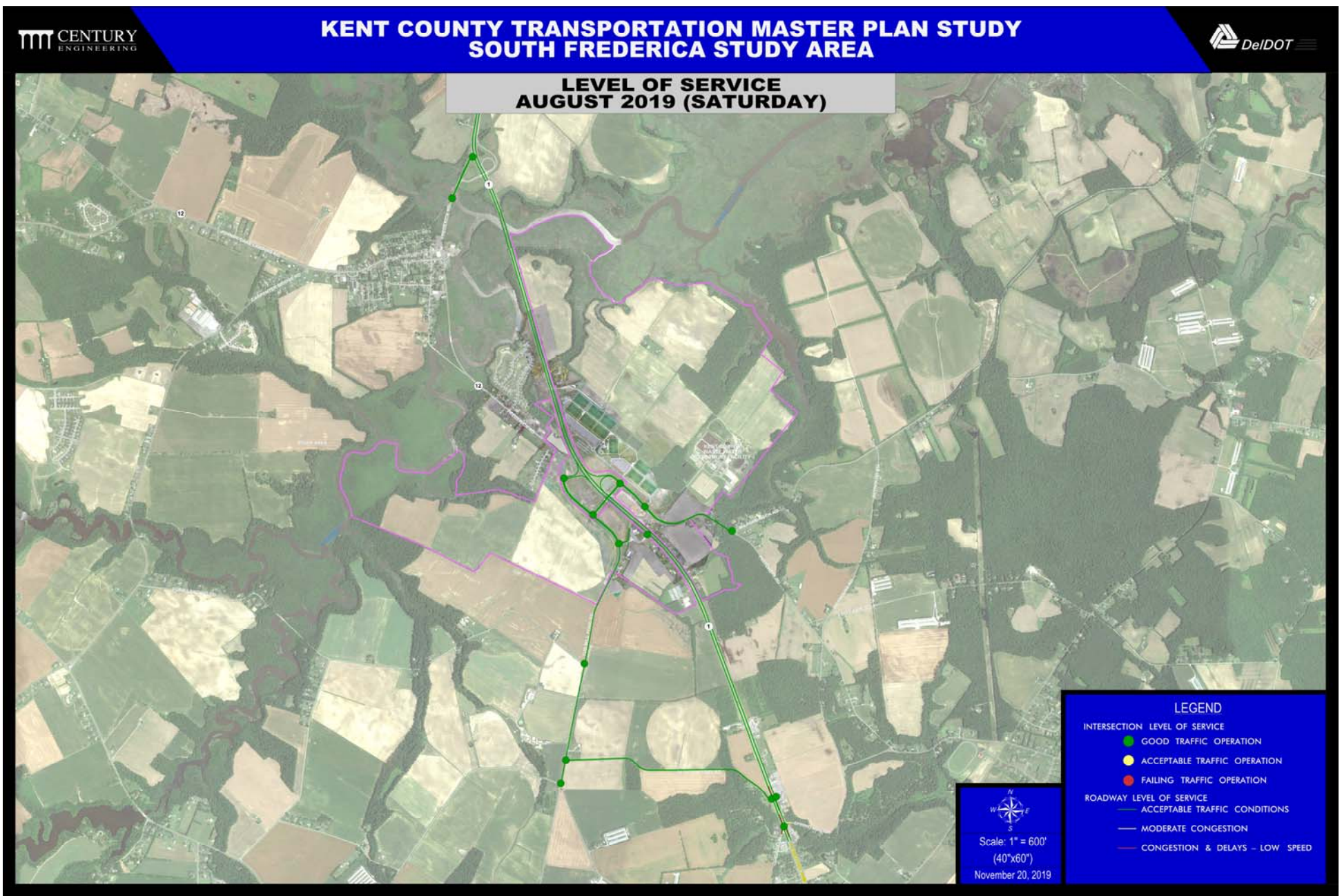


## Level of Service (AM) - South Frederica



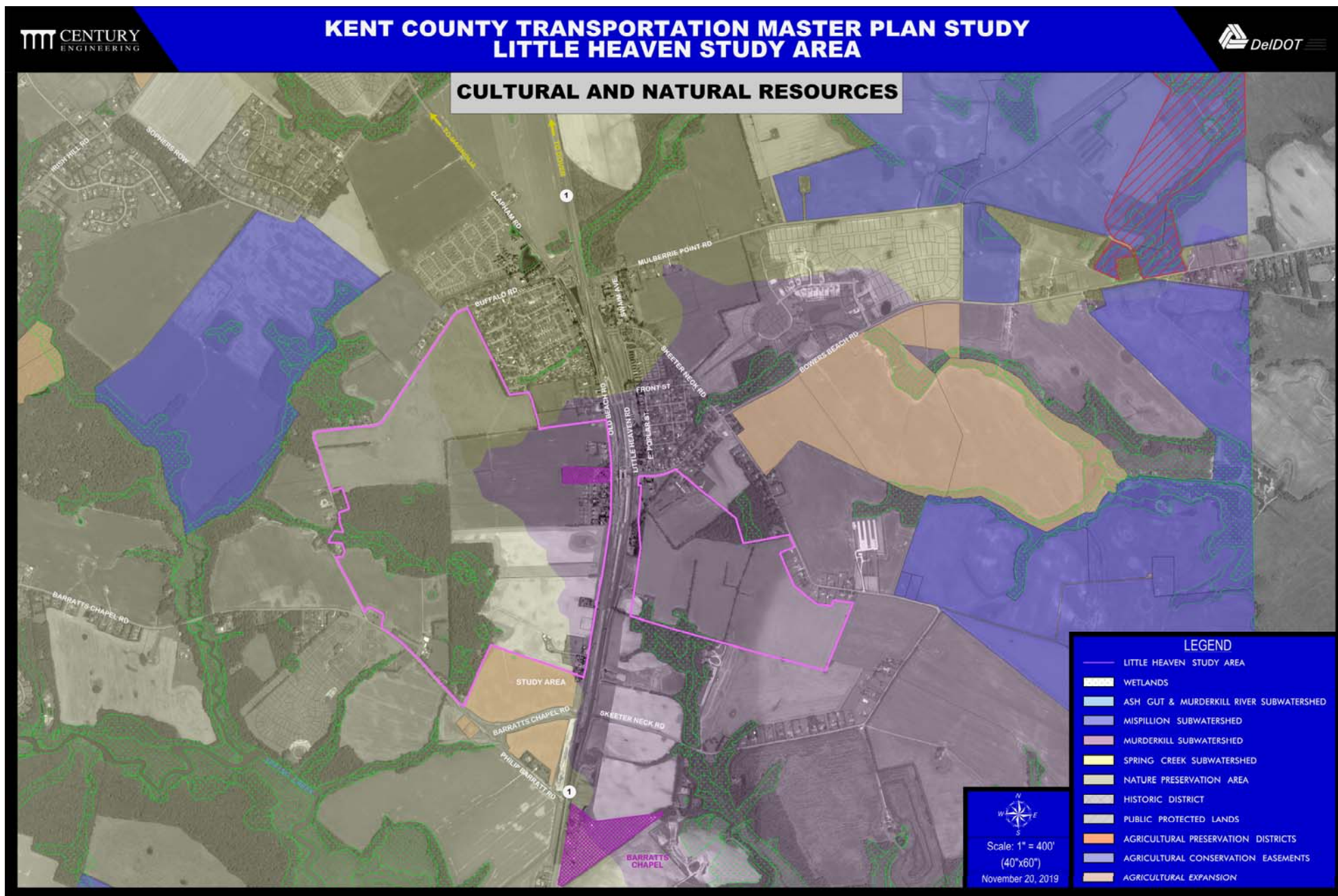


## Level of Service (Saturday) - South Frederica



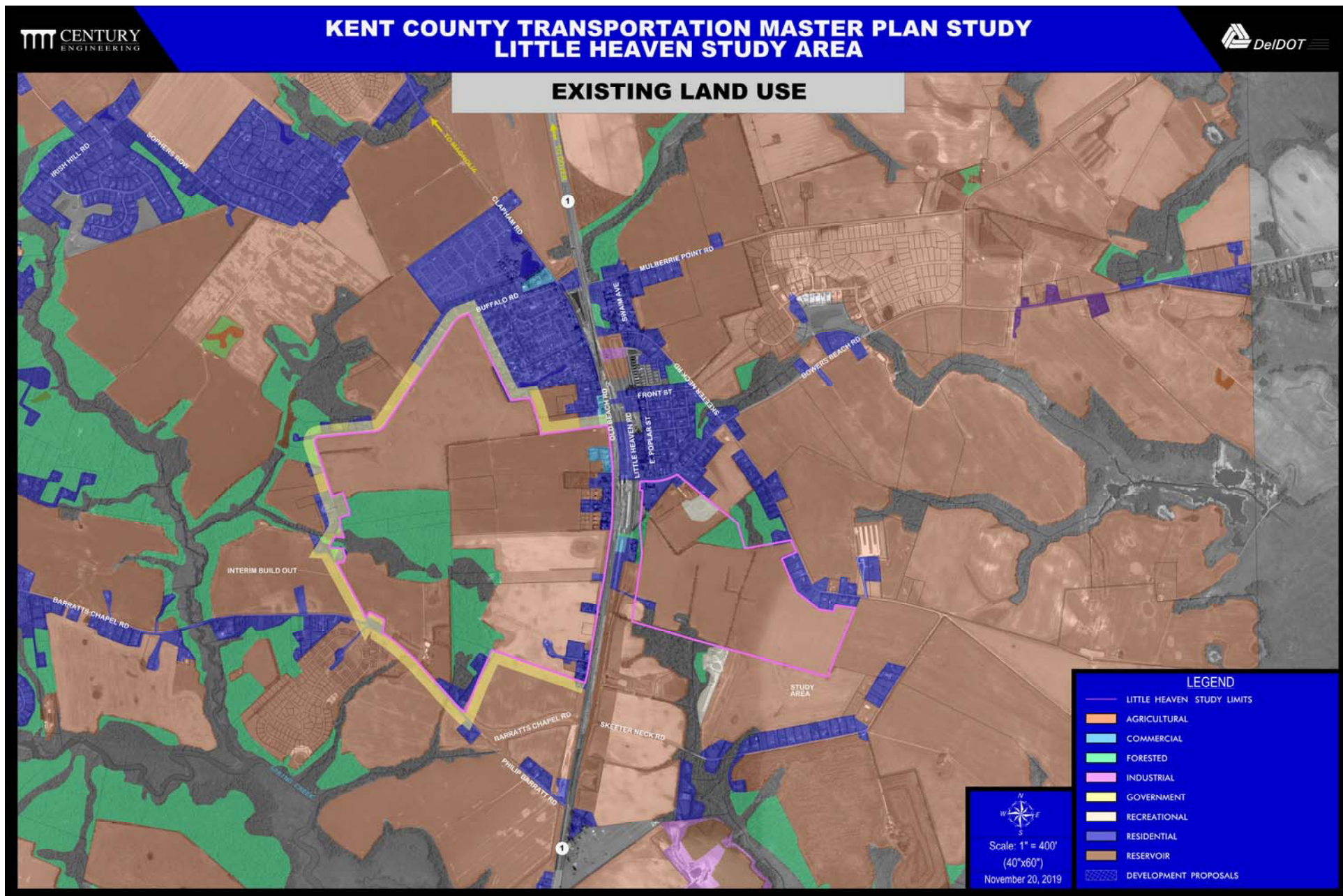


## Environmental Resource – Little Heaven



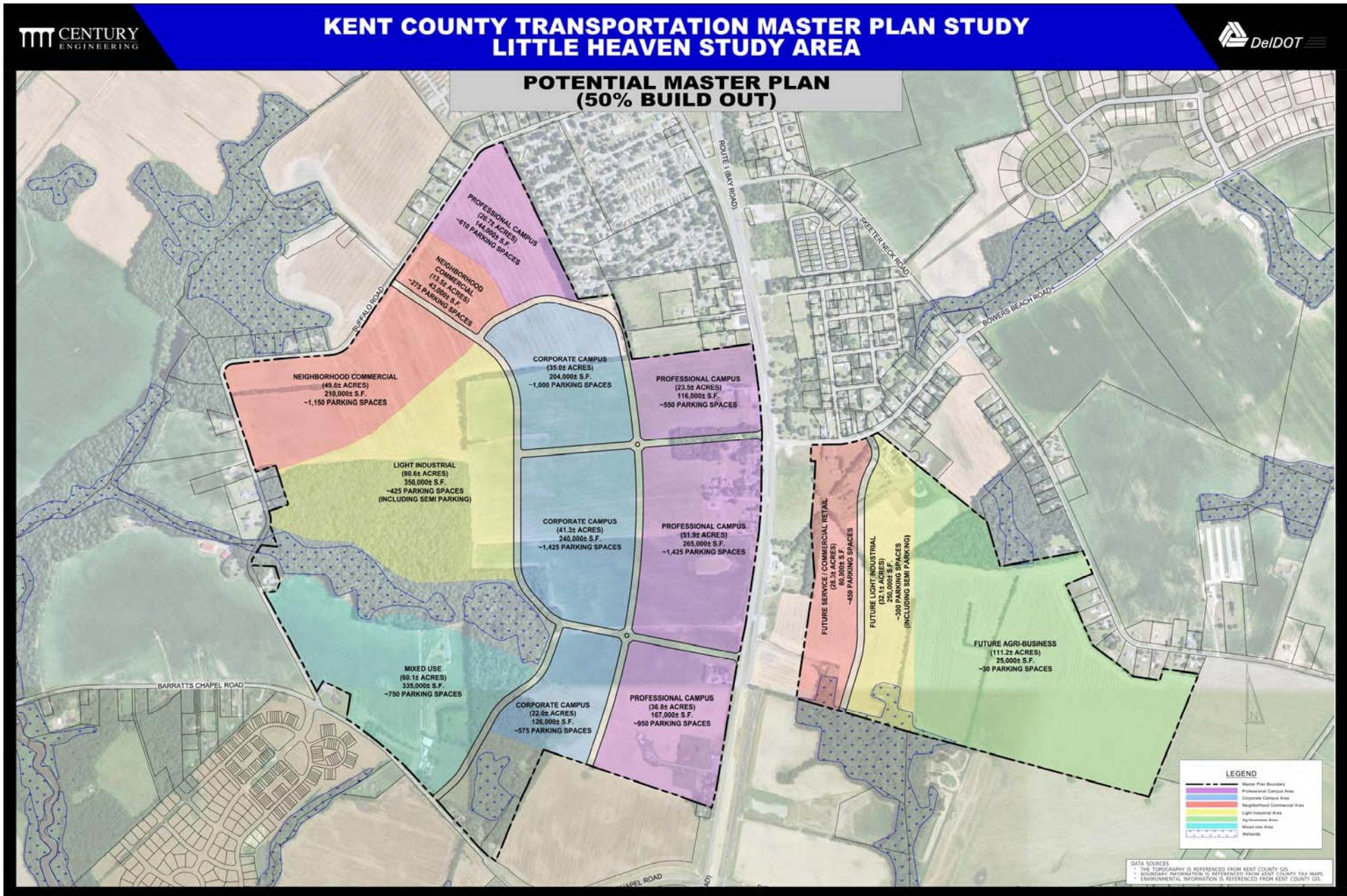


## Existing Land Use Map – Little Heaven





## Kent County Proposed Land Use Map – Little Heaven

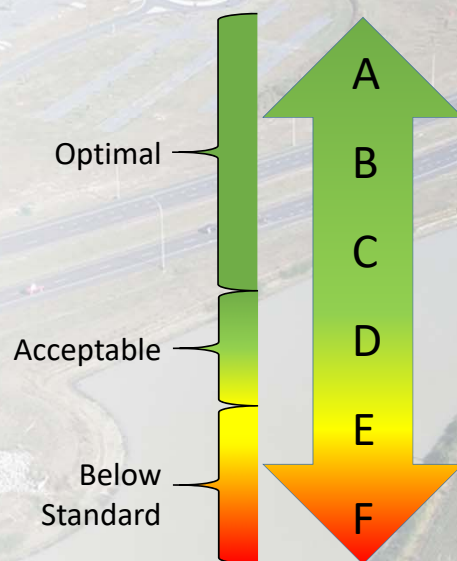




## What is Level of Service (LOS)?

- LOS measures how well traffic moves along a roadway or through a signalized intersection for all movements. LOS is based on vehicle delay and speed, which reflects the relative ease of traffic flow on a scale from A to F. Level D is the design standard minimum acceptable LOS for peak hour traffic volumes in the Design Year.

Level	Traffic Condition
A	Free Flow Condition
B	Reasonably Free Flow
C	Stable Flow
D	Approaching Unstable Flow
E	Restricted Flow
F	Highly Congested

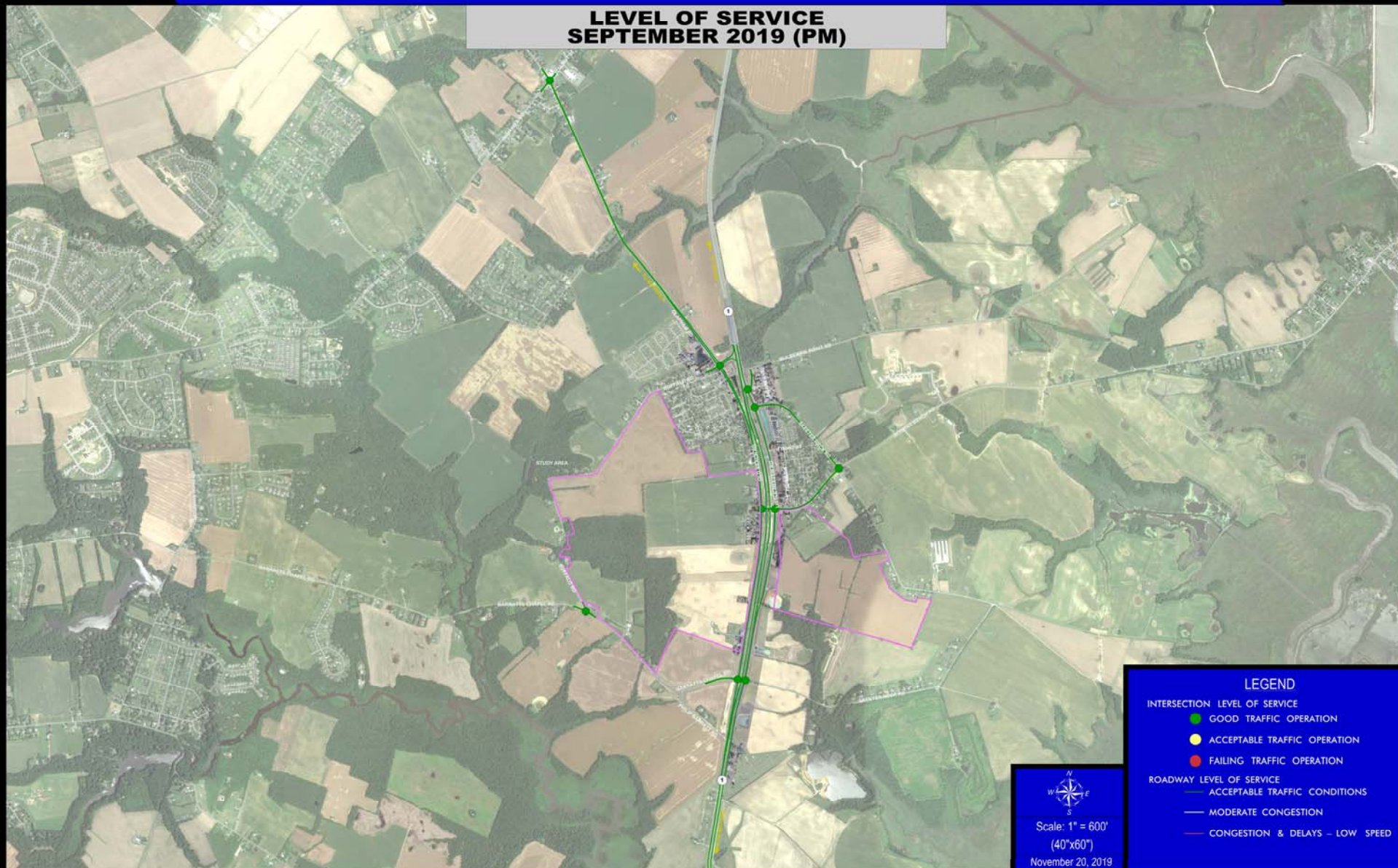




## Level of Service (PM) – Little Heaven

### KENT COUNTY TRANSPORTATION MASTER PLAN STUDY LITTLE HEAVEN STUDY AREA

LEVEL OF SERVICE  
SEPTEMBER 2019 (PM)





## Level of Service (AM) – Little Heaven

### KENT COUNTY TRANSPORTATION MASTER PLAN STUDY LITTLE HEAVEN STUDY AREA

LEVEL OF SERVICE  
SEPTEMBER 2019 (AM)

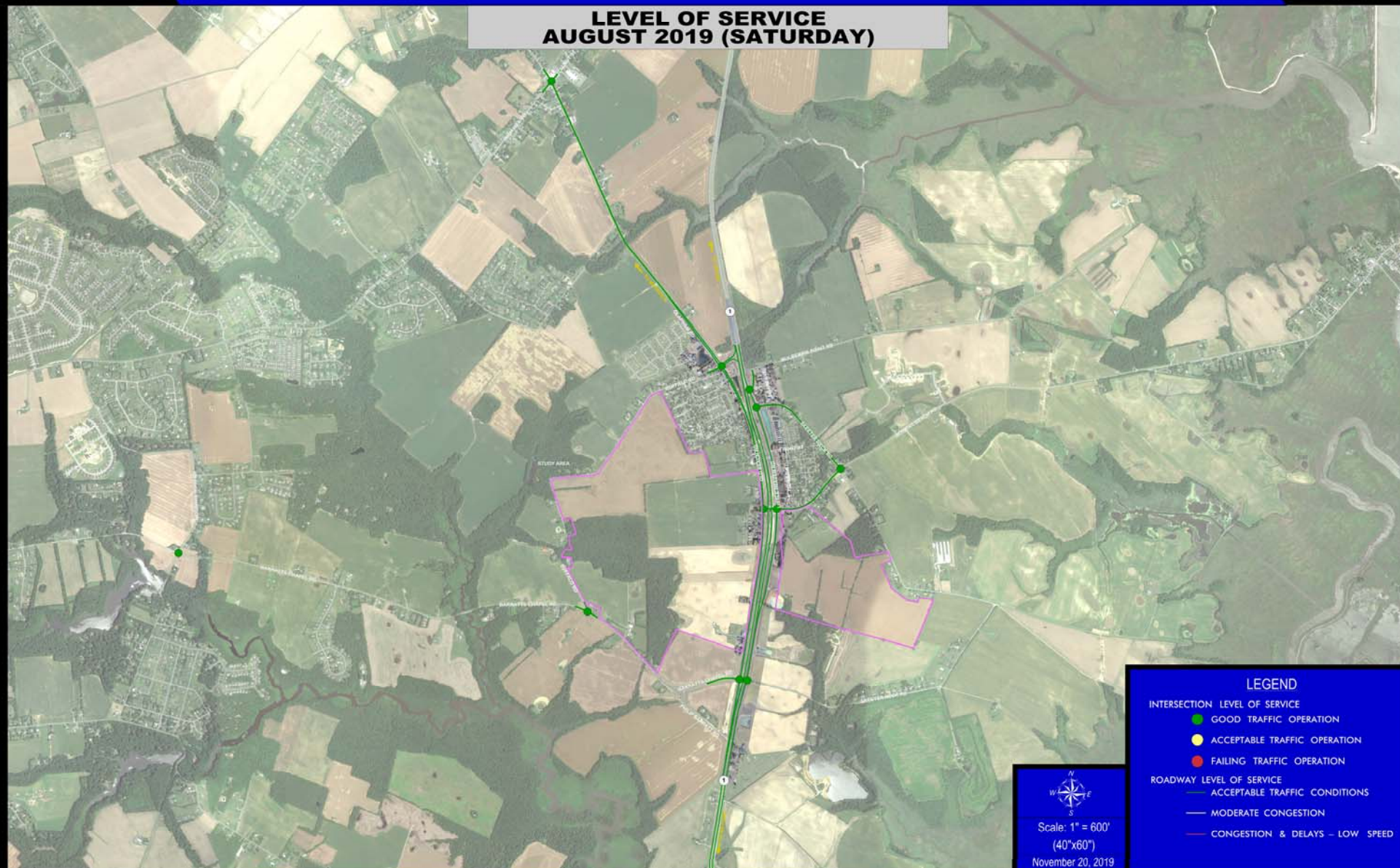




## Level of Service (Saturday) – Little Heaven

### KENT COUNTY TRANSPORTATION MASTER PLAN STUDY LITTLE HEAVEN STUDY AREA

**LEVEL OF SERVICE  
AUGUST 2019 (SATURDAY)**





## Thank You!

Thank you for taking time to review the information presented tonight.

Please take time to complete a comment form. Leave the form in the comment box or mail/email it to DeIDOT. Your comments are important to us and will be considered along with comments from government and regulatory agencies. Safety and operational requirements will also be taken into account.

*DeIDOT Community Relations*

*P.O. Box 778*

*Dover, DE 19903*

*Email: [dotpr@state.de.us](mailto:dotpr@state.de.us)*

*Phone: (302) 760-2080 or 1-800-652-5600*





# Thank you!

Kent County Transportation  
Master Plan Study  
Public Workshop

November 20, 2019