



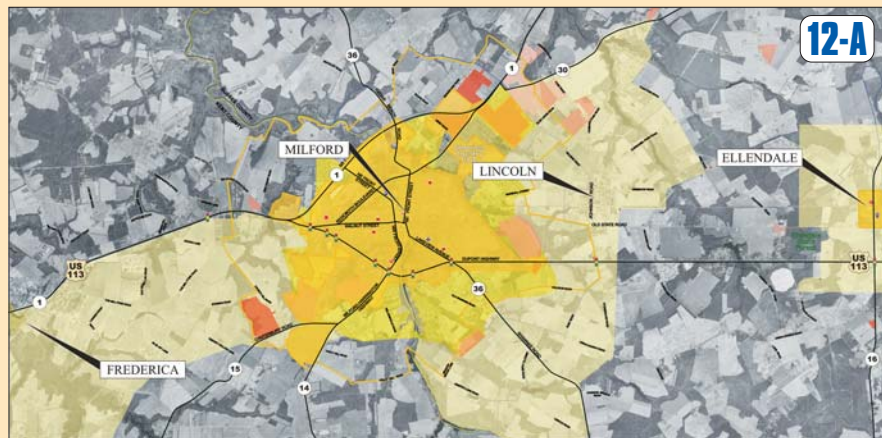
MILFORD AREA RESOURCES



113 US 113 North / South Study



Planning Information / Community Facilities



Mapping

- Data of Mapping - 2002
- Road Network (US Routes, State Routes, Local Roads and Traffic Signals)
- Property Lines (Map and Sources Courtesy: Tax Assessment Files)

Planning Resources

- Municipal Boundaries
- Future Development (Municipal Comprehensive Plans)
- Strategic Office of State Planning Coordinator (OSPC) Designations - State Strategies for Policy and Spending
- Community Similar to Municipal boundaries (near term)
- Developing Area (similar to Future Development in Comprehensive Plans - next 20 years)

Future Development

- Development Agreed - may be under construction since Spring 2002
- Development in Process of Approval - Pending
- Property that may be developed in the near future

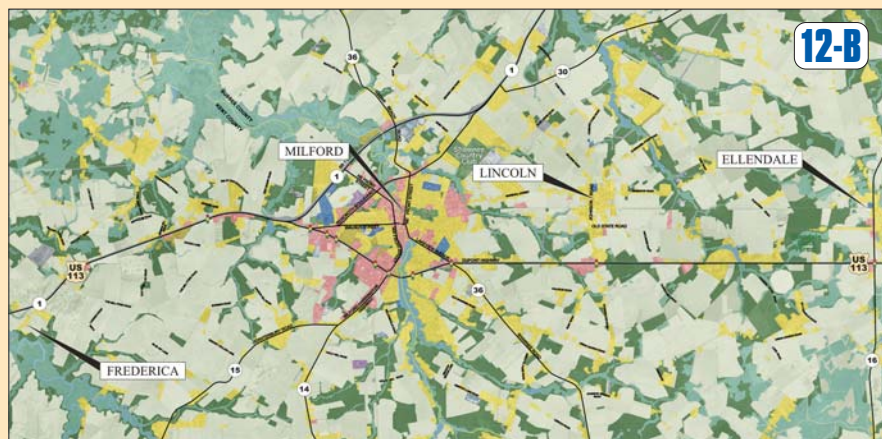
Community Facilities

- Fire Stations (3 sites)
- Police Stations (2 sites)
- Hospitals (1 site)
- Public Schools (6 sites)
- Libraries (1 site)

Other

- Secondary Growth (30 years - Long-Term)
- Retail Shopping Sites
- Service Areas
- Municipal Water
- Existing
- Future
- Municipal Sewer
- Existing
- Future
- Public
- Private

Land Use



Urban / Built Up

- Residential
- Commercial
- Industrial (includes ex-cathedra borrow pits)

Institutional / Governmental

- Agricultural
- Transportation / Communication
- Forest / Open Space
- Wetlands / Waters

Socio-Economic



Resources Protected By Federal Executive Order 13599 (2/1/04)

- 2000 U.S. Housing Data (Census Tract)
- Ethnic Distribution by Census Tract
- Age Distribution
- Low Income Distribution
- Mobile Home Sites

Environmental Protection Agency (EPA) Sites

- Hazardous Waste
- Solid Waste
- Liquid Underground Storage Tanks
- National Pollutant Discharge Elimination System (NPDES) (Municipal and Industrial Outfalls)

Wetlands / Aquatic



Resources Protected By Section 404 of the Federal Clean Water Act (CWA)

- Army Corps of Engineers Section 404(b) guidelines
- Avoid, Minimize, Mitigate
- Permitted Resources

Wetlands, defined by:

- Hydro Soils (Total Marsh)
- Vegetation (Red Maple, Button Bush, Bull Rush)
- Hydrology (ground or surface water source)

Types of Wetlands

- Estuarine (tidal waters, tidal wetlands, salt marshes)
- Lacustrine (lakes, ponds)
- Palustrine (shallow ponds, marshes, non-tidal wetlands)
- Riverine (rivers, creeks, sloughs, streams)
- 100-year Floodplains - Federal Emergency Management Administration (FEMA)

Protected Lands & Resources



Resources Protected By Section 7 of Federal Endangered Species Act

- Rare, Threatened and Endangered Species (RTE'S) (State and Federal)
- Birds, Animals, Plants, Fish, and Natural Communities (Special Ecosystems)

Natural Areas (State/Cultural/Natural Protection)

- State Resource Areas (State Protected Lands, State Parks, Conservation Elements, Nature Preserves, Leased Lands, Fish & Wildlife Areas)

Terrestrial



Resources Protected By Delaware Agricultural Lands Preservation Act and Federal Farmland Protection Policy Act (FPLP)

- Agricultural Development Rights
- Agricultural Districts

Agriculture Suitability / Prime Farm Soils / Land Evaluation Site Assessment (LESA) / Quality of Land for Agricultural Purposes / Agricultural Preservation Suitability

- Very High
- High
- Low (not shown)
- Very Low (not shown)

Domestic Farm Wells