



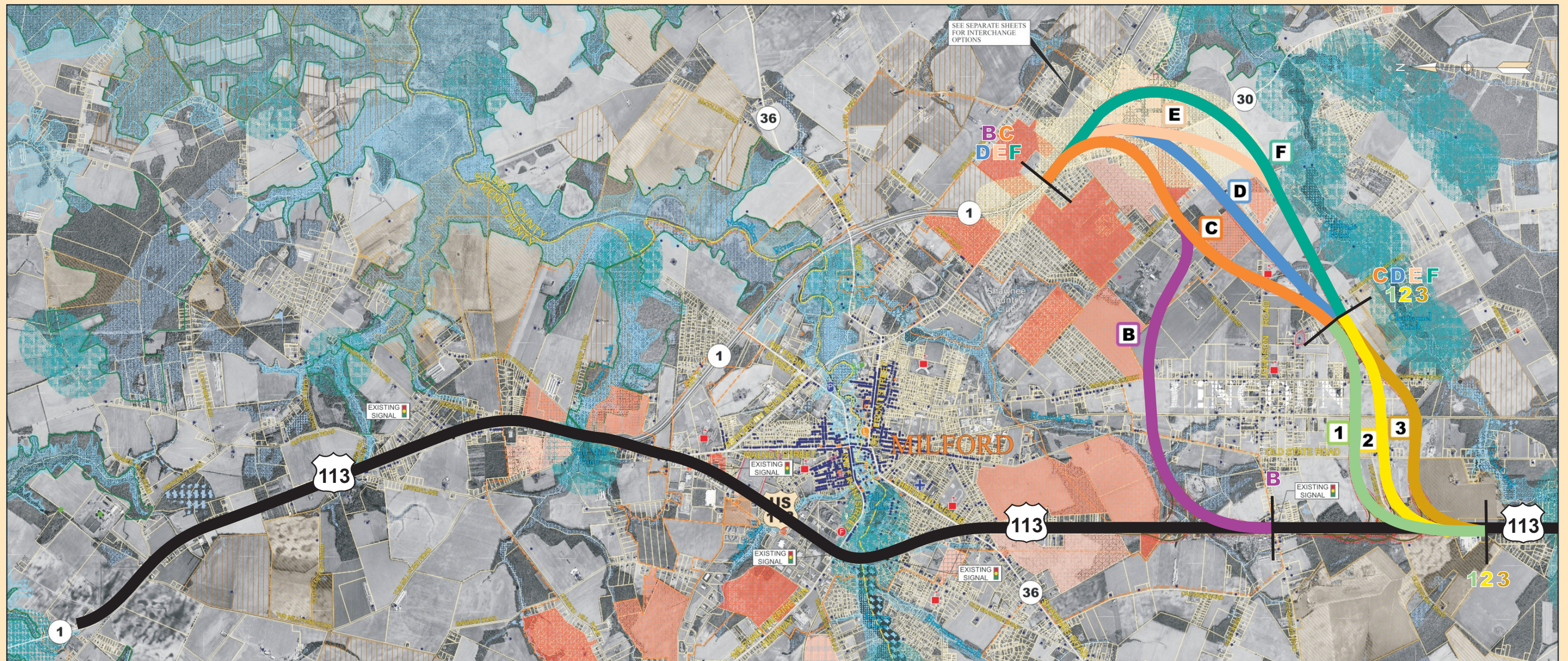
ALTERNATIVES / IMPACTS / WORKING GROUP RECOMMENDATIONS



US 113 North / South Study

May / June 2005

Milford Area - Preliminary East Bypass Alternatives





Milford Area - Preliminary East Bypass Alternatives

Description of Alternatives

- Alternative B passes north of Lincoln.
- Alternatives C-F and 1-3 pass south of Lincoln.
- Each has an interchange (or interchanges) with SR 1 and SR 30 at the northeast end, and with US 113 at the southwest end.
- Each includes the addition of a third lane in each direction on the existing Milford bypass.
- Public opinions:
 - Take advantage of existing Milford bypass.
 - Eastern bypasses have fewer resource impacts than western.
 - Needs to be coordinated with extensive development in progress.
- Length:
 - The existing length of US 113 in the study area is 11.2 miles.
 - Alternative B is 14.7 miles long.
 - Alternatives C through F vary from 13.6 to 14.2 miles long.
 - Each eastern bypass alternative includes between 4.0 and 4.7 miles of new highway.

Working Group Recommendations

EAST ALTERNATIVES

- There was consensus among the Working Group members to recommend to DeIDOT that Alternatives B, C, F, 1 and 3 NOT be retained for further consideration.
- There was consensus among the Working Group members to recommend to DeIDOT that Alternatives D2 and E2 be retained for detailed study with the additional recommendation to adjust the alignment of D and E to minimize impacts and to adjust 2 in the direction of 3 as necessary to minimize impacts.

Eastern Bypass Conclusions

- All eastern bypasses will reduce traffic on US 113 in Milford.
- All have limited resource impacts compared to the western bypasses.
- Alternative B is longer and affects more aquatic resources than Alternatives C through F.
- Of the 84 public comments received on the eastern bypasses at the last workshop, 57 were positive. Sections F and 3 received the most public support, C and 1 the least.

