

# CULTURAL RESOURCES



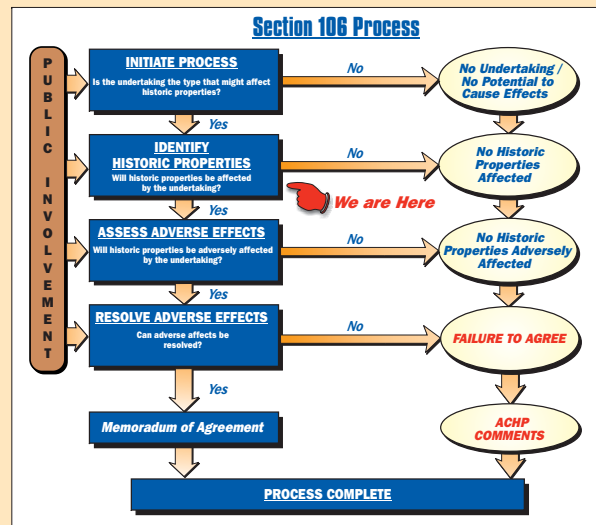
## 113 US 113 North / South Study

### What are Cultural Resources?

- Cultural Resources are buildings, structures, objects, sites and districts over 50 years of age. Cultural Resources are surveyed and evaluated to determine if they meet the criteria for listing on the National Register of Historic Places. Such significant resources are considered historic properties. The Federal Highway Administration and DeIDOT are consulting with the State Historic Preservation Office (SHPO) to survey and evaluate cultural resources in the US 113 project area.

### Why Consider Cultural Resources?

- Section 106 of the National Historic Preservation Act of 1966 requires federal agencies, including the Federal Highway Administration, to take into account the effects of their undertakings on historic properties (significant architectural and archeological resources that qualify for listing on the National Register of Historic Places).
- The Section 106 process gives the public, other parties with an interest, the State Historic Preservation Officer, and the Advisory Council on Historic Preservation (ACHP) opportunity to comment on proposed undertakings. Your comments made at this Public Workshop contribute to the Section 106 public involvement process.



Source: Advisory Council on Historic Preservation (ACHP)

Note: For further information on Section 106, consult the ACHP's Citizen's Guide to Section 106 Review at <http://www.achp.gov/citizensguide.html>

### Historic Properties

Historic Property Number	Property Name	National Register Status	Within 500 Feet of Alignment?
8-00000	Roosa Farm	Contributed	Yes
8-00001	Former Milford High School	Contributed	Yes
8-00002	Preuss-Doherty House	Contributed	Yes
8-00003	James Webb House	Contributed	Yes
8-00004	Cedar Creek Mill Farm Barns	Contributed	Yes
8-00005	Abel S. Small Gravesite	Contributed	Yes
8-00006	George L. Stevens - Thomas M. Cook Property	Contributed	Yes

### Current Studies

As part of the US 113 Project Development effort, several steps have been taken to identify cultural resources that might be impacted by the project. So far, the Project Team, in consultation with the SHPO, has prepared a historical context, developed and tested a computer model to assess sensitivity for archeological sites, and surveyed and evaluated buildings and structures in the area to determine their National Register eligibility. The National Register listed and eligible buildings and structures are shown on the map to the left; some examples of listed and eligible structures are pictured. Known physical effects to these historic properties have been identified. Further surveys to identify audible and visual effects to historic structures will be performed prior to public release of the Draft Environmental Impact Statement (DEIS). In addition, archeological sites will be identified prior to construction of a build alternative.

### SHPO Comments on Alternatives Retained for Detailed Study (based on information reviewed to date)

Based on the information provided to date, the SHPO has offered several generalizations about the alternatives' relative potential effects on historic properties:

- Off-alignment alternatives have fewer potential effects on historic buildings than the on-alignment alternative.
- Among off-alignment alternatives, the East-Green and Purple alternatives have fewer potential effects on historic buildings than the East-Brown alternative and the Western alternatives.
- On-Alignment and Eastern alternatives have lesser overall potential to affect archeological sites (prehistoric, early historic) than do the Western alternatives. Among the Eastern alternatives, East-Green

### Next Steps

- The Federal Highway Administration (FHWA) and DeIDOT, in consultation with the State Historic Preservation Officer (SHPO), will complete the determination of National Register Eligibility for all properties in the Area of Potential Effects.
- The potential impacts to significant resources will be evaluated for each alternative in the DEIS and considered in reaching an informed decision on a Recommended Preferred Alternative.
- The "criteria of adverse effect" will be applied to determine if the Recommended Preferred Alternative will adversely affect historic properties (physically, visually or audibly).
- The parties will consult to determine if adverse effects can be avoided, minimized, or mitigated.
- The result of the consultation will be summarized in the Final Environmental Impact Statement (FEIS) and documented in a Memorandum of Agreement (MOA) between the FHWA, DeIDOT, and SHPO.
- Evaluations of archeological sites will be performed prior to construction of a build alternative. If sites that are eligible for the National Register will be adversely affected, the parties will again consult to determine if the adverse effects can be avoided, minimized, or mitigated.

To provide information about Cultural Resources, or for questions regarding the studies being done for this project, please contact:

Michael C. Hahn, AICP  
 DeIDOT Environmental Studies Office  
 302-760-2131  
 michaelc.hahn@state.de.us