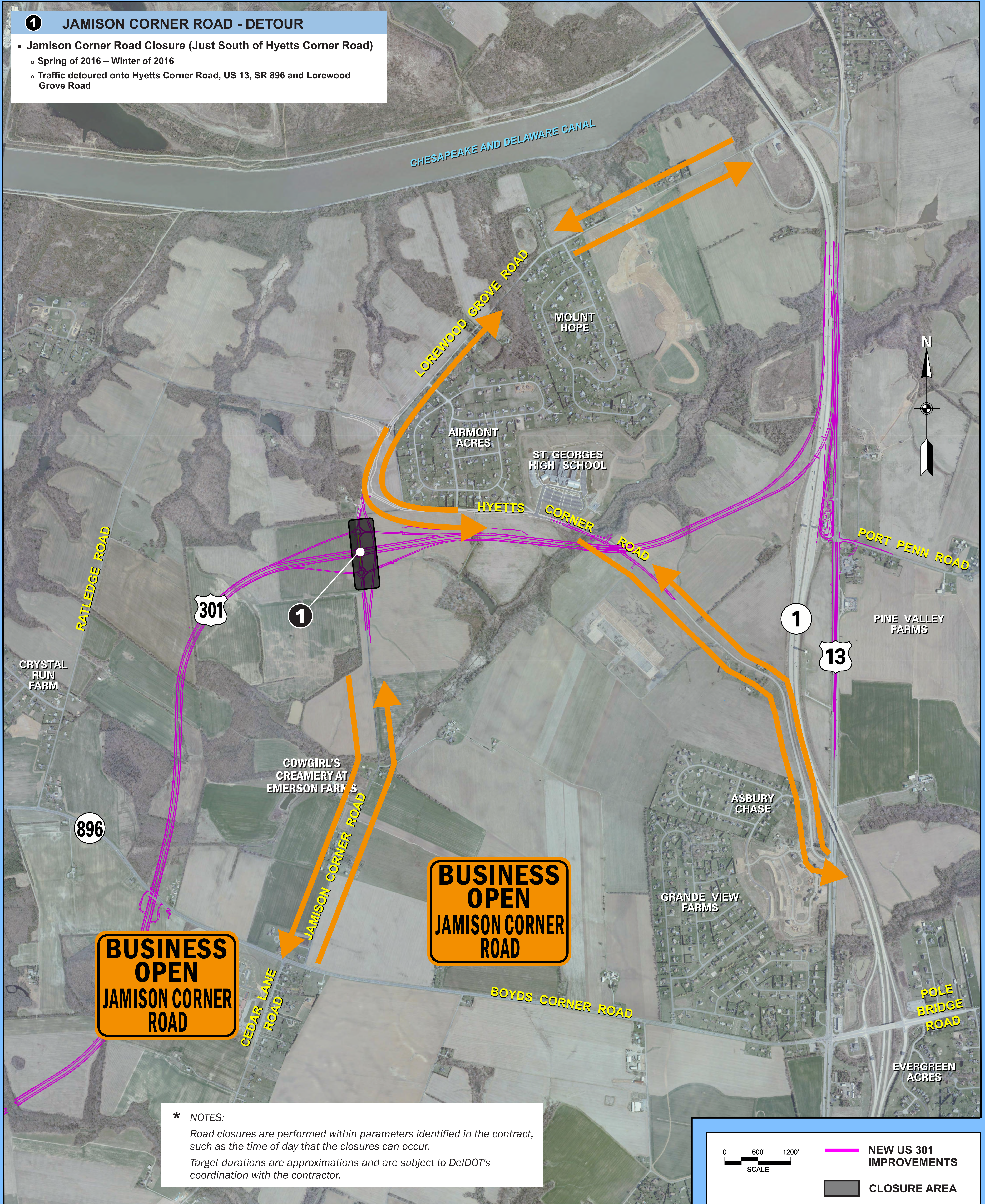


# Northern Project Area - Section 1 (2016)

## 1 JAMISON CORNER ROAD - DETOUR

- Jamison Corner Road Closure (Just South of Hyetts Corner Road)
  - Spring of 2016 – Winter of 2016
  - Traffic detoured onto Hyetts Corner Road, US 13, SR 896 and Lorewood Grove Road



# Northern Project Area - Section 1 (2017 & 2018)

