

CIRCULAR CURVE NO. 33 - US 301

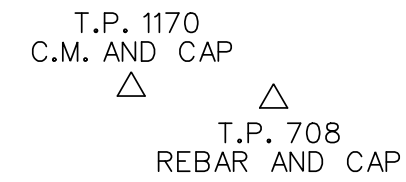
PC (3004)	STATION 648+22.31	NORTHING 545720.3518	EASTING 576534.9377
PI (3005)	660+33.99	546363.4011	577561.9060
CC (15000)		548263.0171	574942.8155
PT (3006)	671+25.46	547539.2979	577854.2121
Radius:	3000.0000		
Design Speed(mph):	70.0000		
Superelevation:	5.4000%		
Delta:	43° 59' 13.2475" Left		
Degree of Curvature(Arc):	1° 54' 35.4935"		
Length:	2303.1546		
Tangent:	1211.6832		
Chord:	2247.0091		
Middle Ordinate:	218.3211		
External:	235.4561		
Tangent Direction:	N 57° 56' 48.2475" E		
Radial Direction:	S 32° 03' 11.7525" E		
Chord Direction:	N 35° 57' 11.6238" E		
Radial Direction:	S 76° 02' 25.0000" E		
Tangent Direction:	N 13° 57' 35.0000" E		

CIRCULAR CURVE NO. 34 - SB EMERGENCY ACCESS RAMP

PC (3027)	STATION 200+97.36	NORTHING 548667.1066	EASTING 578034.2417
PI (3028)	202+07.61	548693.7041	577927.2446
CC (15001)		548764.1532	578058.3656
PT (3029)	202+64.19	548797.6055	577964.1269
Radius:	100.0000		
Design Speed(mph):			
Superelevation:			
Delta:	95° 35' 01.7736" Right		
Degree of Curvature(Arc):	57° 17' 44.8062"		
Length:	166.8252		
Tangent:	110.2534		
Chord:	148.1420		
Middle Ordinate:	32.8175		
External:	48.8483		
Tangent Direction:	N 76° 02' 25.0000" W		
Radial Direction:	N 13° 57' 35.0000" E		
Chord Direction:	N 28° 14' 54.1132" W		
Radial Direction:	S 70° 27' 23.2264" E		
Tangent Direction:	N 19° 32' 36.7736" E		

CIRCULAR CURVE NO. 36 - NB EMERGENCY ACCESS RAMP

PC (3057)	STATION 400+87.96	NORTHING 548488.0125	EASTING 578180.6792
PI (3058)	402+22.17	548455.6355	578310.9264
CC (15003)		548585.0591	578204.8032
PT (3059)	402+74.05	548589.7018	578304.6953
Radius:	100.0000		
Design Speed(mph):			
Superelevation:			
Delta:	106° 37' 14.7047" Left		
Degree of Curvature(Arc):	57° 17' 44.8062"		
Length:	186.0883		
Tangent:	134.2110		
Chord:	160.3768		
Middle Ordinate:	40.2520		
External:	67.3696		
Tangent Direction:	S 76° 02' 25.0000" E		
Radial Direction:	S 13° 57' 35.0000" W		
Chord Direction:	N 50° 38' 57.6476" E		
Radial Direction:	N 87° 20' 20.2953" E		
Tangent Direction:	N 2° 39' 39.7047" W		



HORIZONTAL / VERTICAL CONTROL DATA

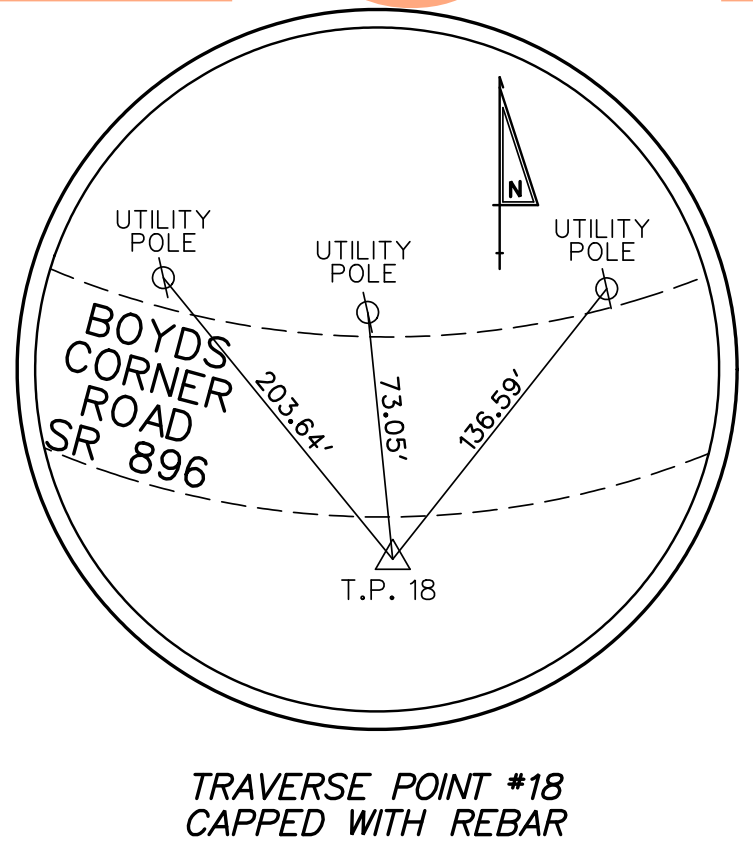
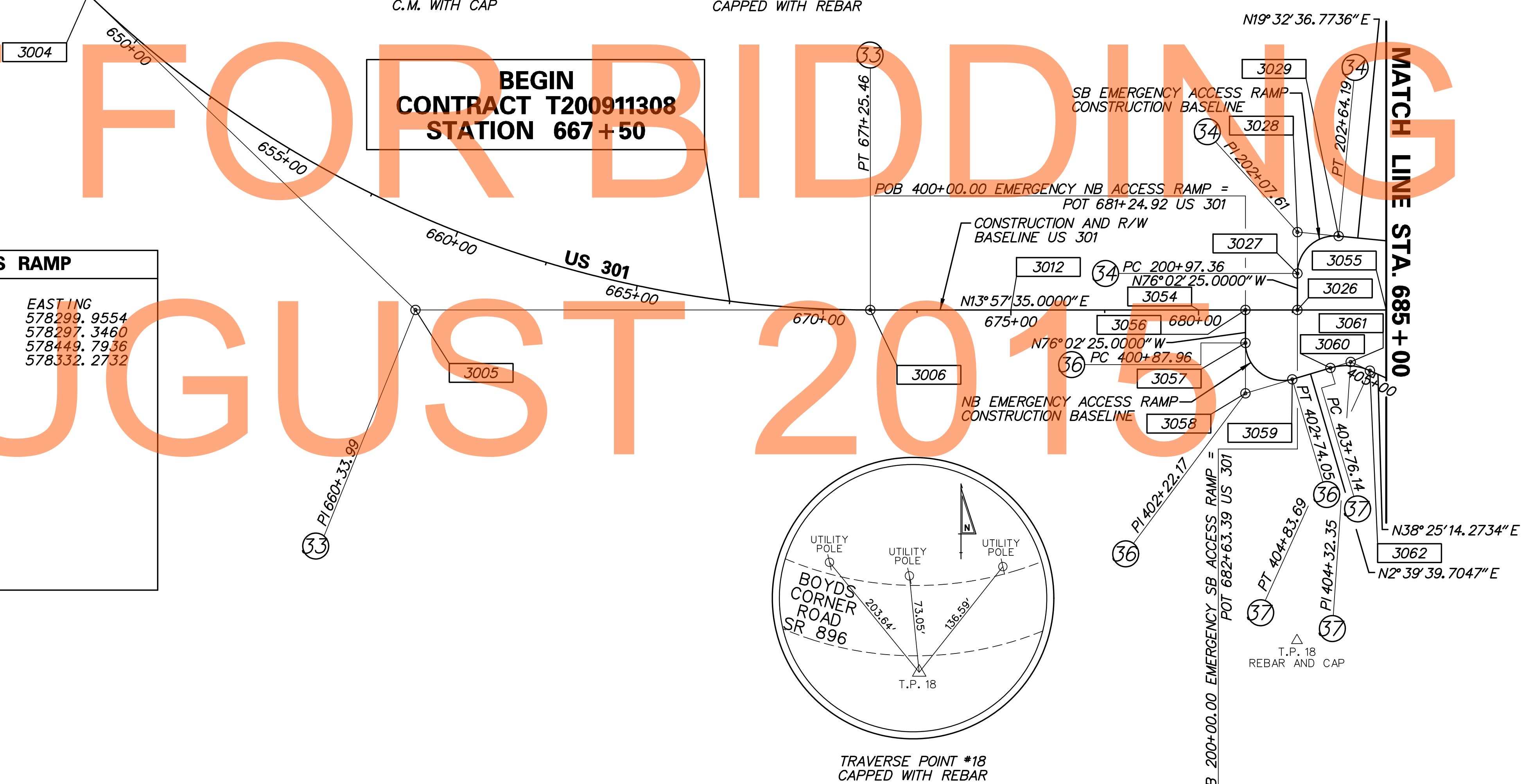
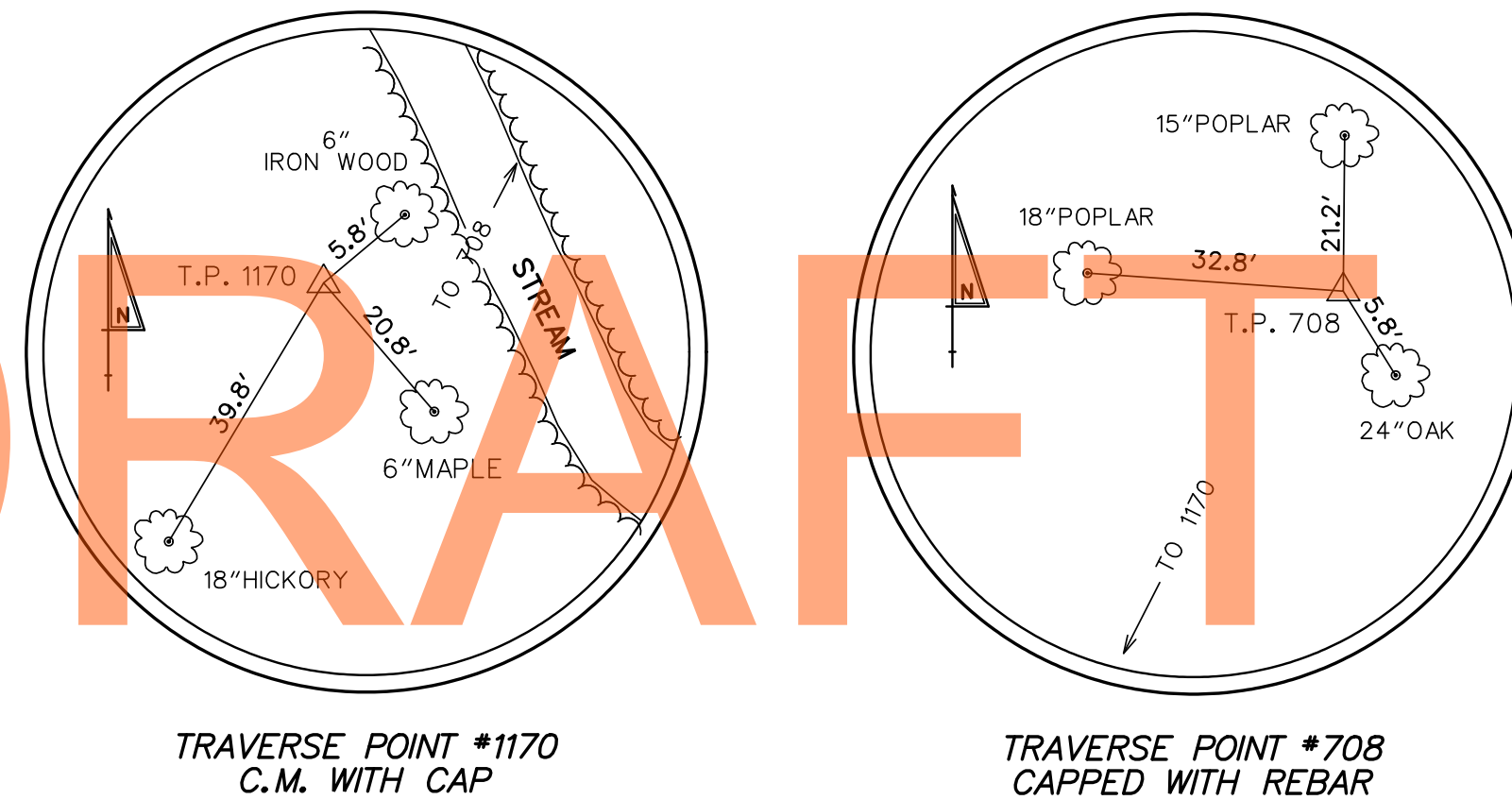
POINT	STATION	OFFSET	NORTHING	EASTING	ELEVATION
18	682+62.1913	881.0251	548429.9136	578983.4403	67.23
708	638+27.5545	-6.0476	545197.5533	575688.6180	48.37
1170	637+12.1400	87.8896	545056.6850	575640.6510	42.56

CONSTRUCTION ALIGNMENT CONTROL

POINT	STATION	OFFSET	NORTHING	EASTING
3026	682+63.39	0.0000'	548643.6196	578128.7260
3012	675+00.00	0.0000'	547902.7716	577944.5649
3054	680+00.00	0.0000'	548388.0043	578065.1848
3055	685+00.00	0.0000'	548873.2370	578185.8046
3056	681+24.92	0.0000'	548509.2313	578095.3196

CIRCULAR CURVE NO. 37 - NB EMERGENCY ACCESS RAMP

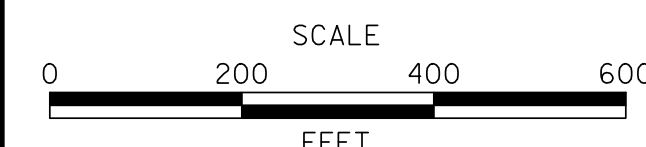
PC (3060)	STATION 403+76.14	NORTHING 548691.6867	EASTING 578299.9554
PI (3061)	404+32.35	548747.8306	578297.3460
CC (15004)		548698.6507	578449.7936
PT (3062)	404+83.69	548791.8652	578332.2732
Radius:	150.0000		
Design Speed(mph):			
Superelevation:			
Delta:	41° 04' 53.9782" Right		
Degree of Curvature(Arc):	38° 11' 49.8708"		
Length:	107.5515		
Tangent:	56.2046		
Chord:	105.2624		
Middle Ordinate:	9.5366		
External:	10.1841		
Tangent Direction:	N 2° 39' 39.7047" W		
Radial Direction:	N 87° 20' 20.2953" E		
Chord Direction:	N 17° 52' 47.2844" E		
Radial Direction:	S 51° 34' 45.7266" E		
Tangent Direction:	N 38° 25' 14.2734" E		



DATUM REFERENCE:
 HORIZONTAL - THIS PROJECT IS REFERENCED TO THE DELAWARE STATE PLANE COORDINATE SYSTEM (NAD 83-2007).
 VERTICAL - THIS PROJECT IS REFERENCED TO NAVD 88 BASED ON THE FOLLOWING STATE OF DELAWARE BENCHMARK

POINT ELEV.
 JU1066 64.03

ADDENDUMS / REVISIONS



US 301,
 SR 896 TO SR 1

CONTRACT	BRIDGE NO.
T200911308	
COUNTY	DESIGNED BY: JJO
NEW CASTLE	CHECKED BY: TAO

HORIZONTAL AND
 VERTICAL CONTROL

HV-01
SHEET NO.
59
TOTAL SHTS.
875

M:\31653-000\Contract\1A\CADD\HV01\0301_1A.dgn
 7/31/2015 10:44:47 AM

CIRCULAR CURVE NO. ① - US 301

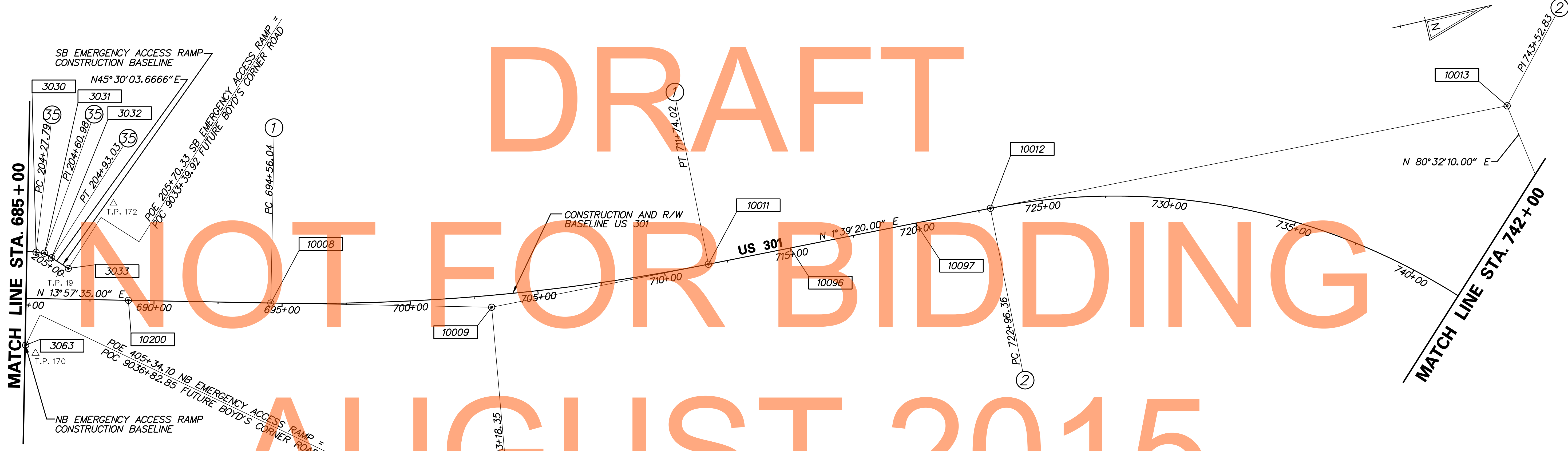
PC (10008)	STATION 694+56.04	NORTHING 549801.0390	EASTING 578416.4390
PI (10009)	703+18.35	550637.8805	578624.4623
CC (10010)		551730.9569	570652.7146
PT (10011)	711+74.02	551499.8299	578649.3752
Radius:	8000.0000		
Design Speed(mph):	70.0000		
Superelevation:	-2.6000%		
Delta:	12° 18' 15.0000"	Left	
Degree of Curvature(Arc):	0° 42' 58.3101"		
Length:	1717.9858		
Tangent:	862.3093		
Chord:	1714.6865		
Middle Ordinate:	46.0725		
External:	46.3394		
Tangent Direction:	N 13° 57' 35.0000" E		
Radial Direction:	S 76° 02' 25.0000" E		
Chord Direction:	N 7° 48' 27.5000" E		
Radial Direction:	S 88° 20' 40.0000" E		
Tangent Direction:	N 1° 39' 20.0000" E		

CIRCULAR CURVE NO. ② - US 301

PC (10012)	STATION 722+96.36	NORTHING 552621.7005	EASTING 578681.8005
PI (10013)	743+52.83	554677.3101	578741.2137
CC (10014)		552549.4733	581180.7569
PT (10015)	757+38.18	555015.4469	580769.6920
Radius:	2500.0000		
Design Speed(mph):	70.0000		
Superelevation:	5.8000%		
Delta:	78° 52' 50.0000"	Right	
Degree of Curvature(Arc):	2° 17' 30.5922"		
Length:	3441.8135		
Tangent:	2056.4681		
Chord:	3176.3679		
Middle Ordinate:	569.2821		
External:	737.1378		
Tangent Direction:	N 1° 39' 20.0000" E		
Radial Direction:	S 88° 20' 40.0000" E		
Chord Direction:	N 41° 05' 45.0000" E		
Radial Direction:	S 9° 27' 50.0000" E		
Tangent Direction:	N 80° 32' 10.0000" E		

CIRCULAR CURVE NO. ③ - SB EMERGENCY ACCESS RAMP

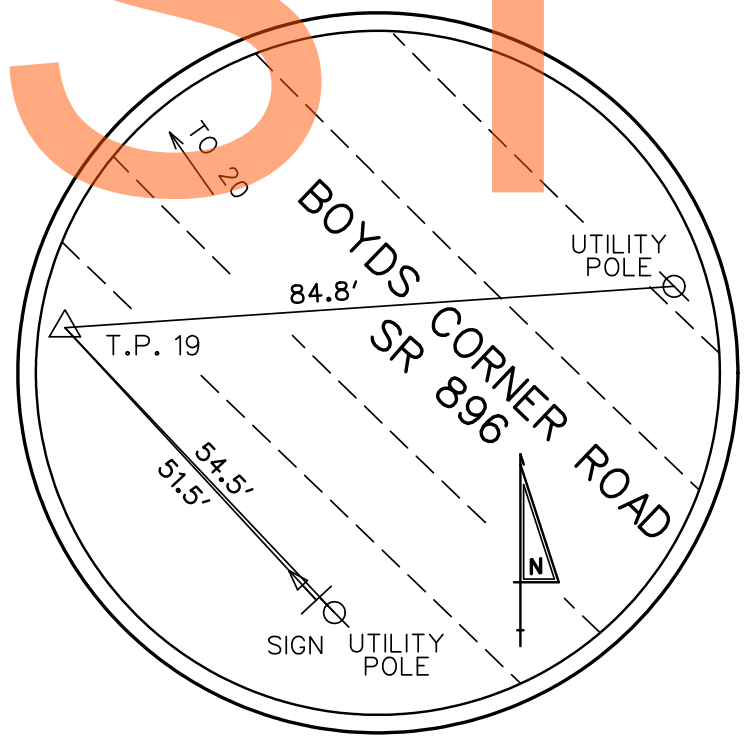
PC (3030)	STATION 204+27.79	NORTHING 548951.7873	EASTING 578018.8575
PI (3031)	204+60.98	548983.0640	578029.9599
CC (15002)		548903.6160	578154.5613
PT (3032)	204+93.03	549006.3259	578053.6322
Radius:	144.0000		
Design Speed(mph):			
Superelevation:			
Delta:	25° 57' 26.8930"	Right	
Degree of Curvature(Arc):	39° 47' 19.4488"		
Length:	65.2382		
Tangent:	33.1887		
Chord:	64.6817		
Middle Ordinate:	3.6787		
External:	3.7751		
Tangent Direction:	N 19° 32' 36.7736" E		
Radial Direction:	S 70° 27' 23.2264" E		
Chord Direction:	N 32° 31' 20.2201" E		
Radial Direction:	S 44° 29' 56.3334" E		
Tangent Direction:	N 45° 30' 03.6666" E		



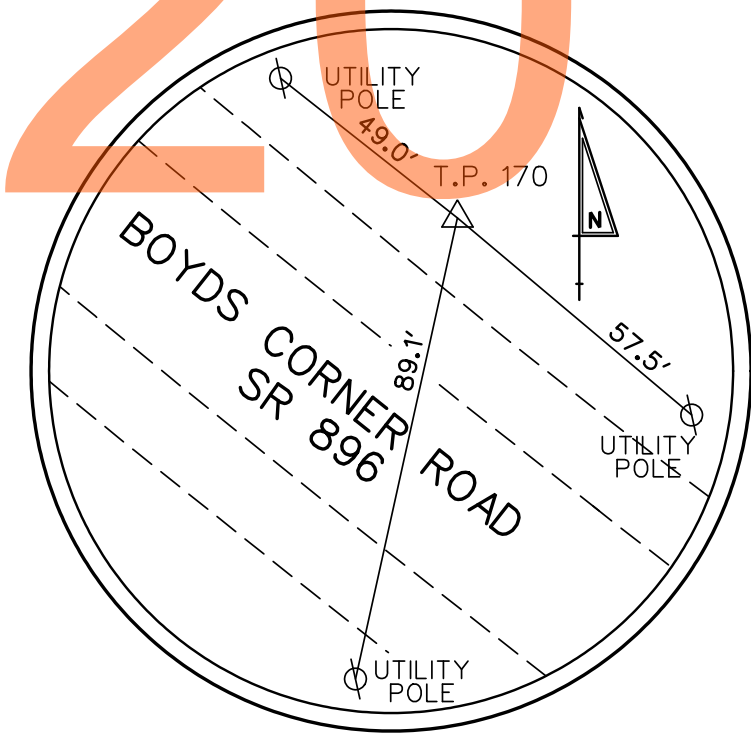
DRAFT
NOT FOR BIDDING
AUGUST 2015

HORIZONTAL / VERTICAL CONTROL DATA					
POINT	STATION	OFFSET	NORTHING	EASTING	ELEVATION
19	686+31.0361	-94.3142	549023.1553	578125.8871	67.37
170	685+41.3268	213.3891	548861.8653	578402.8611	67.09
172	688+34.3356	-375.7361	549288.3407	577901.8207	67.90

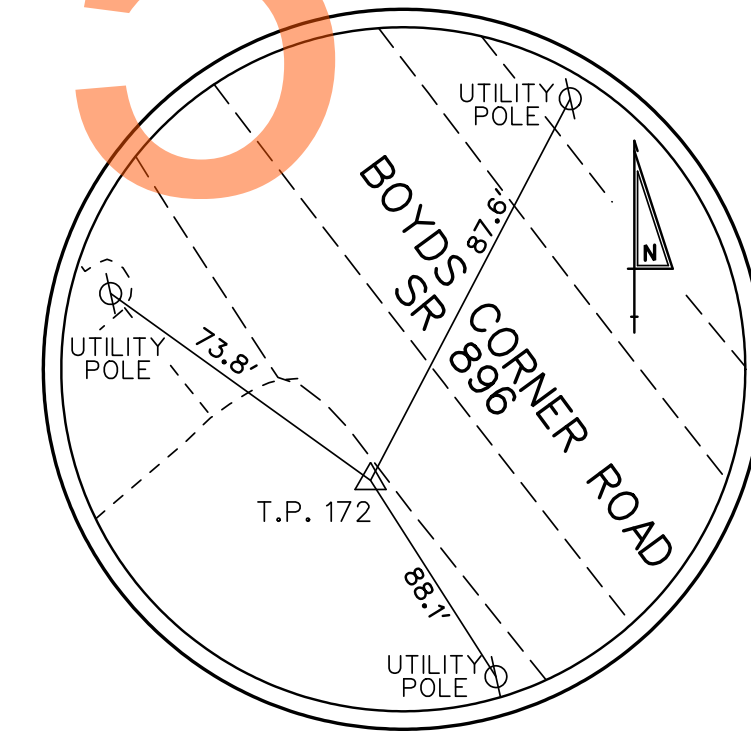
CONSTRUCTION ALIGNMENT CONTROL					
POINT	STATION	OFFSET	NORTHING	EASTING	ELEVATION
3033	205+70.33	0.0000'	549060.5022	578108.7644	
3063	405+34.10	0.0000'	548831.3617	578363.6009	
10096	715+00.00	0.0000'	551825.6700	578658.7929	
10097	720+00.00	0.0000'	552325.4613	578673.2383	
10200	689+00.00	0.0000'	549261.4232	578282.3005	



TRAVERSE POINT #19
CAPPED WITH REBAR



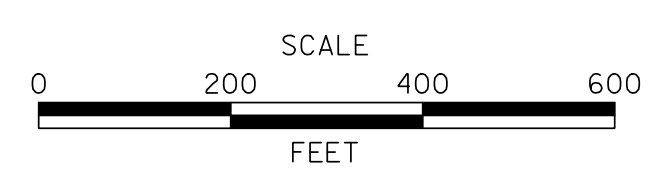
TRAVERSE POINT #170
NAIL SET



TRAVERSE POINT #172
NAIL SET



ADDENDUMS / REVISIONS	



**US 301,
SR 896 TO SR 1**

CONTRACT T200911308	BRIDGE NO.
COUNTY NEW CASTLE	DESIGNED BY: JJO
	CHECKED BY: TAO

**HORIZONTAL AND
VERTICAL CONTROL**

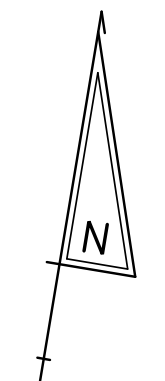
HV-02
SHEET NO. 60
TOTAL SHTS. 875

M:\31653-000\Contract\1A\CADD\HV02\US301-1A.dgn
 7/31/2015 12:08 PM

CONSTRUCTION ALIGNMENT CONTROL				
POINT	STATION	OFFSET	NORTHING	EASTING
10041	89+23.13	0.0000'	554876.9926	580146.4152
10042	100+00.00	0.0000'	553053.2001	582155.2718
10044	68+97.28	0.0000'	555584.2718	581925.9814
10050	200+00.00	0.0000'	553351.9767	582128.2056
10067	300+00.00	0.0000'	553556.1934	582161.9184
10068	307+27.84	0.0000'	554281.0672	582096.2519
10069	309+09.96	0.0000'	554459.6742	582060.6594
10070	311+79.70	0.0000'	554728.3090	582036.3237
10111	30+00.00	0.0000'	554896.8309	582179.4963
10112	35+00.00	0.0000'	555091.7521	582639.9371
10113	60+00.00	0.0000'	555545.8239	582822.4330
10114	65+00.00	0.0000'	555567.2487	582322.8922
10115	80+00.00	0.0000'	555251.8762	580989.9941
10116	85+00.00	0.0000'	555048.8252	580533.0802
10117	105+00.00	0.0000'	553551.1610	582110.1614
10118	110+00.00	0.0000'	554049.1219	582065.0510
10119	115+00.00	0.0000'	554547.0828	582019.9406
10120	120+00.00	0.0000'	555045.0437	581974.8302
10121	125+00.00	0.0000'	555543.0046	581929.7198
10122	210+00.00	0.0000'	554349.0302	582168.3857
10123	215+00.00	0.0000'	554846.6184	582217.4360

**LIMIT OF CONSTRUCTION
CONTRACT T200911308
STATION 132+93**

HORIZONTAL / VERTICAL CONTROL DATA						
POINT	STATION	OFFSET	NORTHING	EASTING	ELEVATION	
47	128+24.32	-35.7761'	555871.5238	581897.1177	75.97'	
48	61+04.85	477.4797'	556027.3579	582738.1371	72.41'	
50	50+59.49	447.8839'	555985.6637	583740.8043	67.95'	

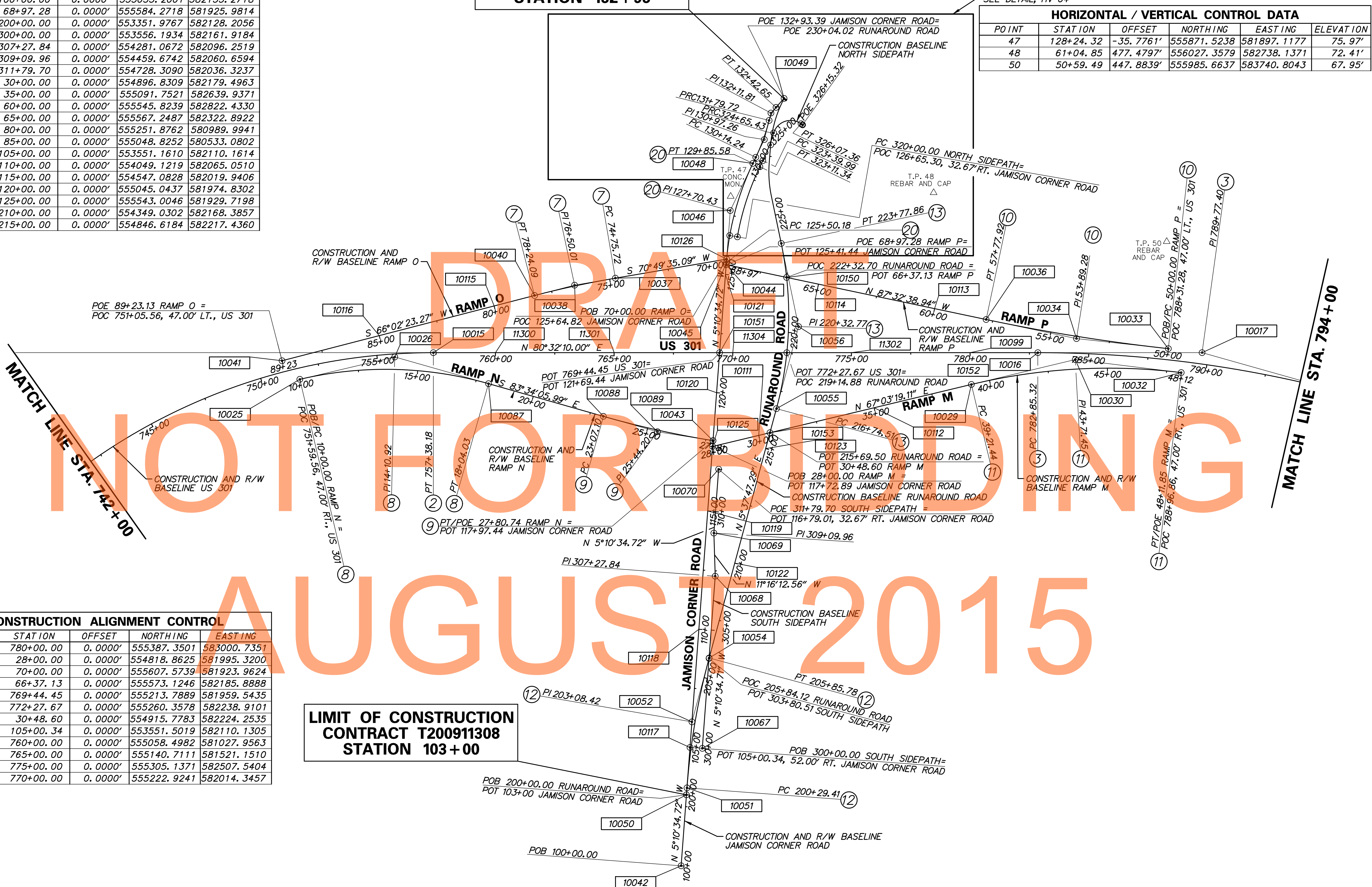


MATCH LINE STA. 742+00

MATCH LINE STA. 794+00

**LIMIT OF CONSTRUCTION
CONTRACT T200911308
STATION 103+00**

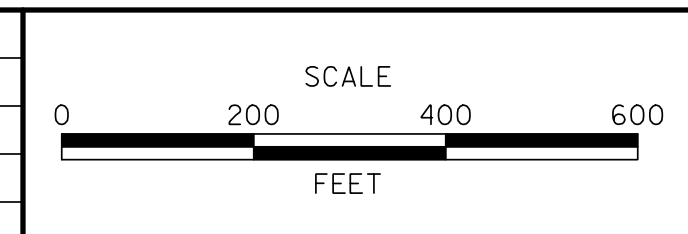
CONSTRUCTION ALIGNMENT CONTROL				
POINT	STATION	OFFSET	NORTHING	EASTING
10099	780+00.00	0.0000'	553387.3501	583000.7351
10125	28+00.00	0.0000'	554818.8625	581995.3200
10126	70+00.00	0.0000'	555607.5739	581923.9624
10150	66+37.13	0.0000'	555573.1246	582185.8888
10151	769+44.45	0.0000'	555213.7889	581959.5435
10152	772+27.67	0.0000'	555260.3578	582238.9101
10153	30+48.60	0.0000'	554915.7783	582224.2535
10465	105+00.34	0.0000'	553551.5019	582110.1305
11300	760+00.00	0.0000'	555058.4982	581027.9563
11301	765+00.00	0.0000'	555140.7111	581521.1510
11302	775+00.00	0.0000'	555305.1371	582507.5404
11304	770+00.00	0.0000'	555222.9241	582014.3457



p:\31653-000\gen\ref\la\cead\HV003\301_1A.dgn
 01/29/2014 4:56:53 PM



ADDENDUMS / REVISIONS	



**US 301,
SR 896 TO SR 1**

CONTRACT T200911308	BRIDGE NO.
COUNTY NEW CASTLE	DESIGNED BY: JJO
	CHECKED BY: TAO

**HORIZONTAL AND
VERTICAL CONTROL**

HV-03
SHEET NO. 61
TOTAL SHTS. 875

CIRCULAR CURVE NO. 17 - NORTH SIDEPATH

	STATION	NORTHING	EASTING
PC (10075)	323+39.99	556042.3337	582005.9149
PI (10076)	324+02.82	556102.6855	582023.3866
CC (10077)		556279.4427	581186.8787
PT (10078)	324+65.43	556164.9465	582031.8234
Radius:	852.6670		
Design Speed(mph):	0.0000		
Superelevation:	0.0000%		
Delta:	8° 25' 43.0073" Left		
Degree of Curvature(Arc):	6° 43' 10.5464"		
Length:	125.4333		
Tangent:	62.8300		
Chord:	125.3203		
Middle Ordinate:	2.3055		
External:	2.3117		
Tangent Direction:	N 16° 08' 44.1806" E		
Radial Direction:	S 73° 51' 15.8194" E		
Chord Direction:	N 11° 55' 52.6770" E		
Radial Direction:	S 82° 16' 58.8267" E		
Tangent Direction:	N 7° 43' 01.1733" E		

CIRCULAR CURVE NO. 18 - NORTH SIDEPATH

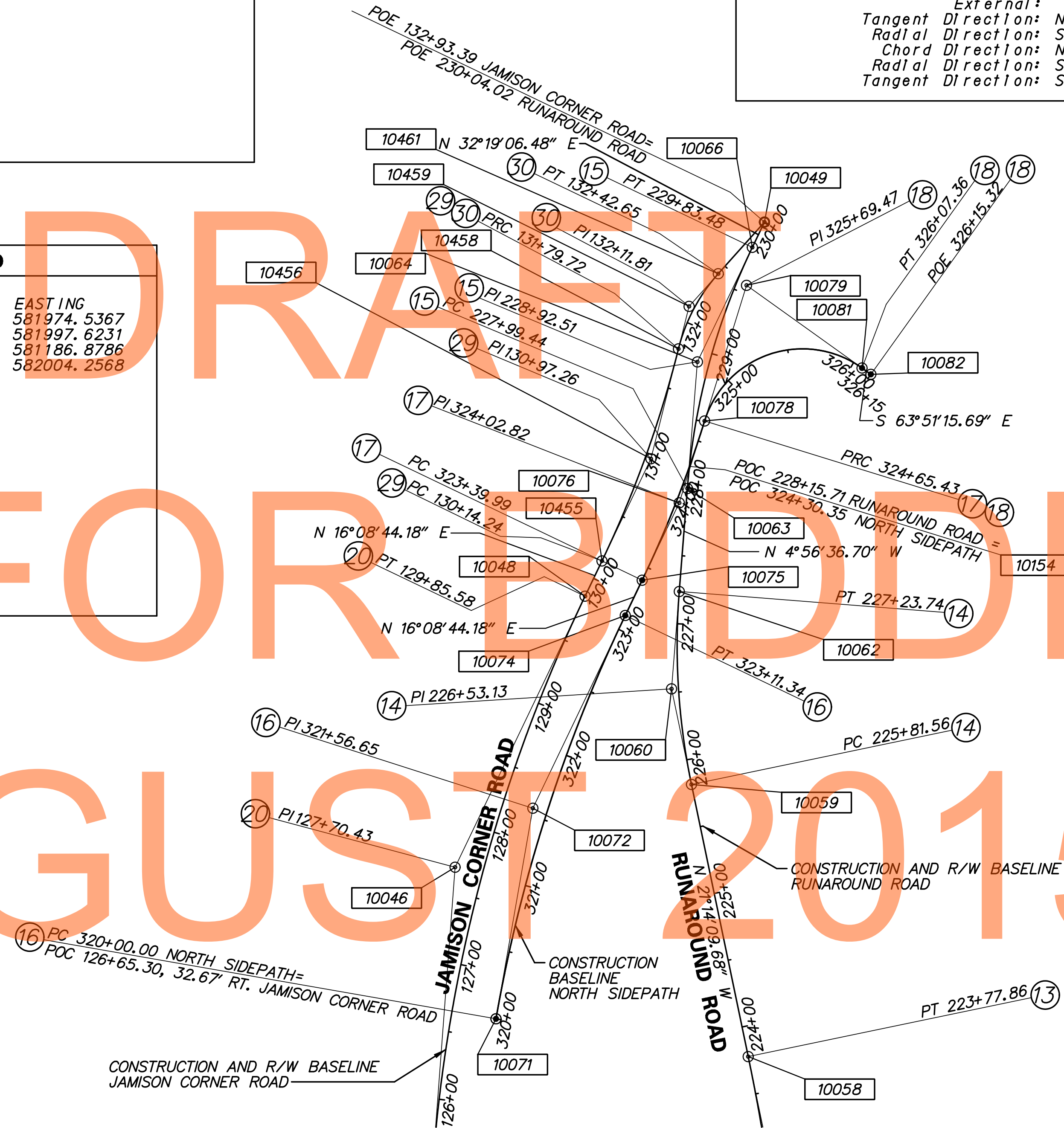
	STATION	NORTHING	EASTING
PRC (10078)	324+65.43	556164.9465	582031.8234
PI (10079)	325+69.47	556268.0491	582045.7946
CC (10080)		556154.8755	582106.1442
PT (10081)	326+07.36	556222.2013	582139.1933
Radius:	75.0000		
Design Speed(mph):	0.0000		
Superelevation:	0.0000%		
Delta:	108° 25' 43.1342" Right		
Degree of Curvature(Arc):	76° 23' 39.7417"		
Length:	141.9328		
Tangent:	104.0449		
Chord:	121.6815		
Middle Ordinate:	31.1434		
External:	53.2589		
Tangent Direction:	N 7° 43' 01.1733" E		
Radial Direction:	S 82° 16' 58.8267" E		
Chord Direction:	N 61° 55' 52.7405" E		
Radial Direction:	S 26° 08' 44.3076" W		
Tangent Direction:	S 63° 51' 15.6924" E		

CIRCULAR CURVE NO. 29 - JAMISON CORNER ROAD

	STATION	NORTHING	EASTING
PC (10455)	130+14.24	556051.4191	581974.5367
PI (10456)	130+97.26	556131.1661	581997.6231
CC (10457)		556279.4427	581186.8786
PCC (10458)	131+79.72	556213.9221	582004.2568
Radius:	820.0000		
Design Speed(mph):	0.0000		
Superelevation:	0.0000%		
Delta:	11° 33' 44.9942" Left		
Degree of Curvature(Arc):	6° 59' 14.2447"		
Length:	165.4790		
Tangent:	83.0214		
Chord:	165.1984		
Middle Ordinate:	4.1707		
External:	4.1921		
Tangent Direction:	N 16° 08' 43.7964" E		
Radial Direction:	S 73° 51' 16.2036" E		
Chord Direction:	N 10° 21' 51.2993" E		
Radial Direction:	S 85° 25' 01.1978" E		
Tangent Direction:	N 4° 34' 58.8022" E		

CIRCULAR CURVE NO. 30 - JAMISON CORNER ROAD

	STATION	NORTHING	EASTING
PRC (10458)	131+79.72	556213.9221	582004.2568
PI (10459)	132+11.81	556245.9135	582006.8212
CC (10460)		556203.5347	582133.8411
PT (10461)	132+42.65	556273.0359	582023.9795
Radius:	130.0000		
Design Speed(mph):	0.0000		
Superelevation:	0.0000%		
Delta:	27° 44' 07.6720" Right		
Degree of Curvature(Arc):	44° 04' 25.2356"		
Length:	62.9298		
Tangent:	32.0941		
Chord:	62.3171		
Middle Ordinate:	3.7893		
External:	3.9031		
Tangent Direction:	N 04° 34' 58.8150" E		
Radial Direction:	S 85° 25' 01.1850" E		
Chord Direction:	N 18° 27' 02.6510" E		
Radial Direction:	S 57° 40' 53.5131" E		
Tangent Direction:	N 32° 19' 06.4869" E		



CONSTRUCTION ALIGNMENT CONTROL

POINT	STATION	OFFSET	NORTHING	EASTING
10049	132+93.39	0.0000'	556315.9202	582051.1092
10058	223+77.86	0.0000'	555710.7546	582139.9353
10082	326+15.32	0.0000'	556218.6929	582146.3404
10154	324+30.35	0.0000'	556130.2907	582026.3992

p:\1653-000\gen\trac\la\cadd\HV004\1301_LA.dgn
 01/29/2014 4:56:34 PM



ADDENDUMS / REVISIONS



US 301,
SR 896 TO SR 1

CONTRACT	BRIDGE NO.
T200911308	
COUNTY	DESIGNED BY: JJO
NEW CASTLE	CHECKED BY: TAO

HORIZONTAL AND VERTICAL CONTROL

HV-04
SHEET NO.
62
TOTAL SHTS.
875

HORIZONTAL / VERTICAL CONTROL DATA					
POINT	STATION	OFFSET	NORTHING	EASTING	ELEVATION
51	795+79.16	-504.5564	555982.7810	584618.7329	59.22'
53	906+61.44	-27.5244	555707.5738	585777.7673	34.15'
54	915+46.23	-34.7167	555333.3041	586584.1692	56.16'
55	923+65.80	-33.7864	554844.5916	587248.5351	53.02'
B46	824+41.48	1289.3068	554175.8125	587806.1237	47.34'
180	910+16.05	-323.9046	555843.8978	586228.1894	35.85'
181	910+17.50	2.4195	555545.2737	586096.6093	28.25'
182	912+53.65	-61.0870	555499.8636	586338.4024	39.24'
185	913+22.74	-198.7582	555588.9589	586465.1848	45.17'
186	808+53.59	35.2954	555306.2249	585834.5172	31.70'
187	806+16.50	-167.5047	555533.8070	585621.1009	34.27'

**LIMIT OF CONSTRUCTION
CONTRACT T20091308
STATION 902+81**

**END
CONTRACT T20091308
STATION 848+00**

**LIMIT OF CONSTRUCTION
CONTRACT T20091308
STATION 930+25**

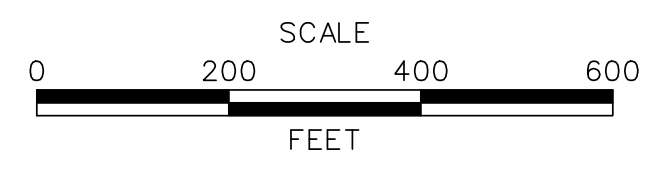
CONSTRUCTION ALIGNMENT CONTROL					
POINT	STATION	OFFSET	NORTHING	EASTING	
10024	837+50.00	0.0000'	555933.2901	588604.8043	
10098	930+50.00	0.0000'	554331.3379	587705.0897	
10103	800+00.00	0.0000'	555434.9343	584989.9488	
10106	832+50.00	0.0000'	555723.8170	588150.7988	
10107	805+00.00	0.0000'	555380.0917	585486.9277	
10108	810+00.00	0.0000'	555325.2487	585983.9108	
10109	840+00.00	0.0000'	556013.5104	588843.1186	
10111	845+00.00	0.0000'	556222.9835	589297.1242	
10155	911+34.02	0.0000'	555498.5921	586203.3491	
10156	816+33.34	0.0000'	555274.0882	586614.7258	
10201	2000+00.00	0.0000'	555698.5280	585723.5581	
10400	400+00.00	0.0000'	555384.3939	586425.5823	
10417	406+50.01	0.0000'	555415.5494	586177.9728	
10450	450+00.00	0.0000'	554902.9236	586889.3692	
10451	451+49.98	0.0000'	555021.9718	586980.5998	
11030	837+50.00	0.0000'	555908.7738	588616.1159	
11059	1038+95.42	0.0000'	555957.8063	588593.4922	
10500	2100+00.00	0.0000'	554826.5251	587217.9780	
10501	2100+58.76	0.0000'	554767.8821	587221.6629	
10502	2101+17.85	0.0000'	554708.9087	587225.3686	
10504	2101+72.02	0.0000'	554666.3340	587266.3441	

CIRCULAR CURVE NO. 38 - WINDSOR COMMONS PATH			
PC (10501)	STATION	NORTHING	EASTING
PI (10502)	2100+58.76	554767.8821	587221.6629
CC (10503)	2101+17.85	554708.9087	587225.3686
PT (10504)	2101+72.02	554777.9788	587382.3460
		554666.3340	587266.3441
Radius:	161.0000		
Delta:	40° 18' 28.7578" Left		
Degree of Curvature (Arc):	35° 35' 14.7865"		
Length:	113.2646		
Tangent:	59.0897		
Chord:	110.9433		
Middle Ordinate:	9.8580		
External:	10.5010		
Tangent Direction:	S 3° 35' 43.9130" E		
Radial Direction:	S 86° 24' 16.0870" W		
Chord Direction:	S 23° 44' 58.2919" E		
Radial Direction:	S 46° 05' 47.3292" W		
Tangent Direction:	S 43° 54' 12.6708" E		

MATCH LINE STA. 794+00



ADDENDUMS / REVISIONS



US 301,
SR 896 TO SR 1

CONTRACT	BRIDGE NO.
T20091308	
COUNTY	DESIGNED BY: JJO
NEW CASTLE	CHECKED BY: TAO

HORIZONTAL AND VERTICAL CONTROL

HV-05
SHEET NO.
63
TOTAL SHTS.
875

CIRCULAR CURVE NO. ③ - US 301

Table with columns: STATION, NORTHING, EASTING. Data points for PC, PI, CC, PT and various curve parameters like Radius, Design Speed, Superelevation, Delta, Degree of Curvature, Length, Tangent, Chord, Middle Ordinate, External, and Tangent/Chord/Radial directions.

CIRCULAR CURVE NO. ⑦ - RAMP O

Table with columns: STATION, NORTHING, EASTING. Data points for PC, PI, CC, PT and various curve parameters like Radius, Design Speed, Superelevation, Delta, Degree of Curvature, Length, Tangent, Chord, Middle Ordinate, External, and Tangent/Chord/Radial directions.

CIRCULAR CURVE NO. ⑧ - RAMP N

Table with columns: STATION, NORTHING, EASTING. Data points for PC, PI, CC, PT and various curve parameters like Radius, Design Speed, Superelevation, Delta, Degree of Curvature, Length, Tangent, Chord, Middle Ordinate, External, and Tangent/Chord/Radial directions.

CIRCULAR CURVE NO. ⑨ - RAMP N

Table with columns: STATION, NORTHING, EASTING. Data points for PC, PI, CC, PT and various curve parameters like Radius, Design Speed, Superelevation, Delta, Degree of Curvature, Length, Tangent, Chord, Middle Ordinate, External, and Tangent/Chord/Radial directions.

CIRCULAR CURVE NO. ⑩ - RAMP P

Table with columns: STATION, NORTHING, EASTING. Data points for PC, PI, CC, PT and various curve parameters like Radius, Design Speed, Superelevation, Delta, Degree of Curvature, Length, Tangent, Chord, Middle Ordinate, External, and Tangent/Chord/Radial directions.

CIRCULAR CURVE NO. ⑪ - RAMP M

Table with columns: STATION, NORTHING, EASTING. Data points for PC, PI, CC, PT and various curve parameters like Radius, Design Speed, Superelevation, Delta, Degree of Curvature, Length, Tangent, Chord, Middle Ordinate, External, and Tangent/Chord/Radial directions.

CIRCULAR CURVE NO. ⑫ - RUNAROUND ROAD

Table with columns: STATION, NORTHING, EASTING. Data points for PC, PI, CC, PT and various curve parameters like Radius, Design Speed, Superelevation, Delta, Degree of Curvature, Length, Tangent, Chord, Middle Ordinate, External, and Tangent/Chord/Radial directions.

CIRCULAR CURVE NO. ⑬ - RUNAROUND ROAD

Table with columns: STATION, NORTHING, EASTING. Data points for PC, PI, CC, PT and various curve parameters like Radius, Design Speed, Superelevation, Delta, Degree of Curvature, Length, Tangent, Chord, Middle Ordinate, External, and Tangent/Chord/Radial directions.

CIRCULAR CURVE NO. ⑭ - RUNAROUND ROAD

Table with columns: STATION, NORTHING, EASTING. Data points for PC, PI, CC, PT and various curve parameters like Radius, Design Speed, Superelevation, Delta, Degree of Curvature, Length, Tangent, Chord, Middle Ordinate, External, and Tangent/Chord/Radial directions.

CIRCULAR CURVE NO. ⑮ - RUNAROUND ROAD

Table with columns: STATION, NORTHING, EASTING. Data points for PC, PI, CC, PT and various curve parameters like Radius, Design Speed, Superelevation, Delta, Degree of Curvature, Length, Tangent, Chord, Middle Ordinate, External, and Tangent/Chord/Radial directions.

CIRCULAR CURVE NO. ⑯ - NORTH SIDEPATH

Table with columns: STATION, NORTHING, EASTING. Data points for PC, PI, CC, PT and various curve parameters like Radius, Design Speed, Superelevation, Delta, Degree of Curvature, Length, Tangent, Chord, Middle Ordinate, External, and Tangent/Chord/Radial directions.

CIRCULAR CURVE NO. ⑰ - JAMISON CORNER ROAD

Table with columns: STATION, NORTHING, EASTING. Data points for PC, PI, CC, PT and various curve parameters like Radius, Design Speed, Superelevation, Delta, Degree of Curvature, Length, Tangent, Chord, Middle Ordinate, External, and Tangent/Chord/Radial directions.

ADDENDUMS / REVISIONS

US 301, SR 896 TO SR 1

Table with columns: CONTRACT (T200911308), COUNTY (NEW CASTLE), BRIDGE NO., DESIGNED BY: (JJO), CHECKED BY: (TAO)

HORIZONTAL AND VERTICAL CONTROL

Table with columns: SHEET NO. (64), TOTAL SHTS. (875)

CIRCULAR CURVE NO. ④ - US 301

Table with columns: STATION, NORTHING, EASTING. Data points for PC, PI, CC, PT, and curve parameters like Radius, Design Speed, Delta, Degree of Curvature, Length, Tangent, Chord, Middle Ordinate, External, Tangent Direction, Radial Direction, Chord Direction, and Radial Direction.

CIRCULAR CURVE NO. ⑤ - US 301 NB

Table with columns: STATION, NORTHING, EASTING. Data points for PC, PI, CC, PT, and curve parameters like Radius, Design Speed, Delta, Degree of Curvature, Length, Tangent, Chord, Middle Ordinate, External, Tangent Direction, Radial Direction, Chord Direction, and Radial Direction.

CIRCULAR CURVE NO. ⑥ - RAMP Q

Table with columns: STATION, NORTHING, EASTING. Data points for PCC, PI, CC, PT, and curve parameters like Radius, Design Speed, Delta, Degree of Curvature, Length, Tangent, Chord, Middle Ordinate, External, Tangent Direction, Radial Direction, Chord Direction, and Radial Direction.

CIRCULAR CURVE NO. ⑦ - HYETTS CORNER ROAD

Table with columns: STATION, NORTHING, EASTING. Data points for PCC, PI, CC, PT, and curve parameters like Radius, Design Speed, Delta, Degree of Curvature, Length, Tangent, Chord, Middle Ordinate, External, Tangent Direction, Radial Direction, Chord Direction, and Radial Direction.

CIRCULAR CURVE NO. ⑧ - HYETTS CORNER ROAD

Table with columns: STATION, NORTHING, EASTING. Data points for PCC, PI, CC, PT, and curve parameters like Radius, Design Speed, Delta, Degree of Curvature, Length, Tangent, Chord, Middle Ordinate, External, Tangent Direction, Radial Direction, Chord Direction, and Radial Direction.

CIRCULAR CURVE NO. ⑨ - HYETTS CORNER ROAD

Table with columns: STATION, NORTHING, EASTING. Data points for PCC, PI, CC, PT, and curve parameters like Radius, Design Speed, Delta, Degree of Curvature, Length, Tangent, Chord, Middle Ordinate, External, Tangent Direction, Radial Direction, Chord Direction, and Radial Direction.

CIRCULAR CURVE NO. ⑩ - HYETTS CORNER ROAD

Table with columns: STATION, NORTHING, EASTING. Data points for PC, PI, CC, PCC, and curve parameters like Radius, Design Speed, Delta, Degree of Curvature, Length, Tangent, Chord, Middle Ordinate, External, Tangent Direction, Radial Direction, Chord Direction, and Radial Direction.

CIRCULAR CURVE NO. ⑪ - HIGH SCHOOL DRIVEWAY

Table with columns: STATION, NORTHING, EASTING. Data points for PC, PI, CC, PT, and curve parameters like Radius, Design Speed, Delta, Degree of Curvature, Length, Tangent, Chord, Middle Ordinate, External, Tangent Direction, Radial Direction, Chord Direction, and Radial Direction.

CIRCULAR CURVE NO. ⑫ - UTILITY ACCESS ROAD

Table with columns: STATION, NORTHING, EASTING. Data points for PC, PI, CC, PT, and curve parameters like Radius, Design Speed, Delta, Degree of Curvature, Length, Tangent, Chord, Middle Ordinate, External, Tangent Direction, Radial Direction, Chord Direction, and Radial Direction.

CIRCULAR CURVE NO. ⑬ - UTILITY ACCESS ROAD

Table with columns: STATION, NORTHING, EASTING. Data points for PC, PI, CC, PT, and curve parameters like Radius, Design Speed, Delta, Degree of Curvature, Length, Tangent, Chord, Middle Ordinate, External, Tangent Direction, Radial Direction, Chord Direction, and Radial Direction.

CIRCULAR CURVE NO. ⑭ - UTILITY ACCESS ROAD

Table with columns: STATION, NORTHING, EASTING. Data points for PC, PI, CC, PT, and curve parameters like Radius, Design Speed, Delta, Degree of Curvature, Length, Tangent, Chord, Middle Ordinate, External, Tangent Direction, Radial Direction, Chord Direction, and Radial Direction.

CIRCULAR CURVE NO. ⑮ - UTILITY ACCESS ROAD

Table with columns: STATION, NORTHING, EASTING. Data points for PC, PI, CC, PCC, and curve parameters like Radius, Design Speed, Delta, Degree of Curvature, Length, Tangent, Chord, Middle Ordinate, External, Tangent Direction, Radial Direction, Chord Direction, and Radial Direction.

ADDENDUMS / REVISIONS

NOT TO SCALE

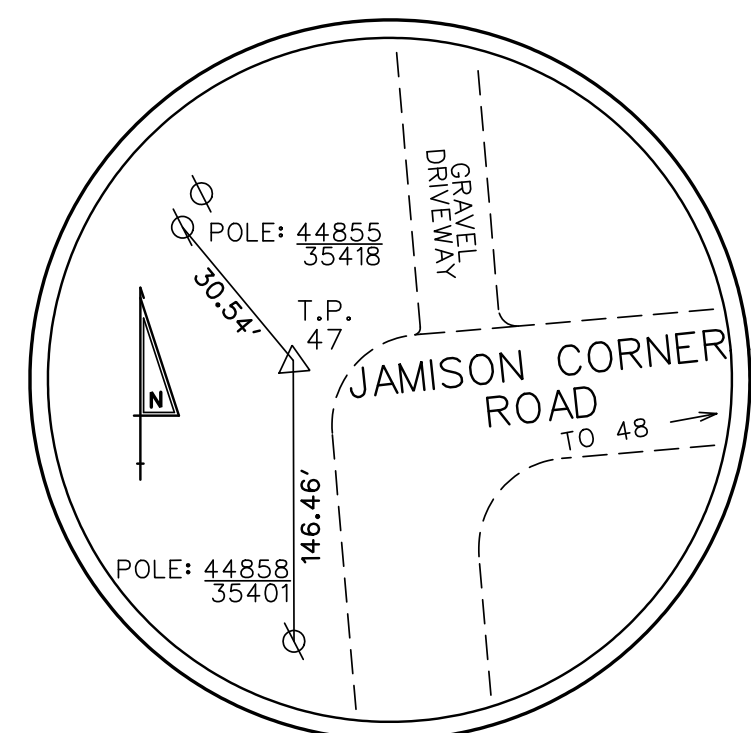
US 301, SR 896 TO SR 1

Table with columns: CONTRACT, BRIDGE NO., COUNTY, CHECKED BY: TAO

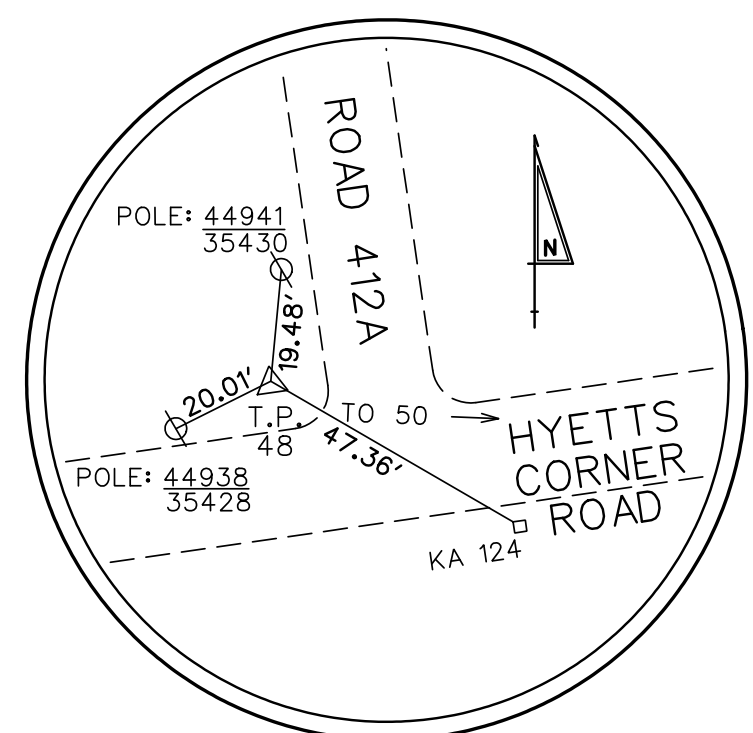
HORIZONTAL AND VERTICAL CONTROL

Table with columns: SHEET NO., TOTAL SHTS.

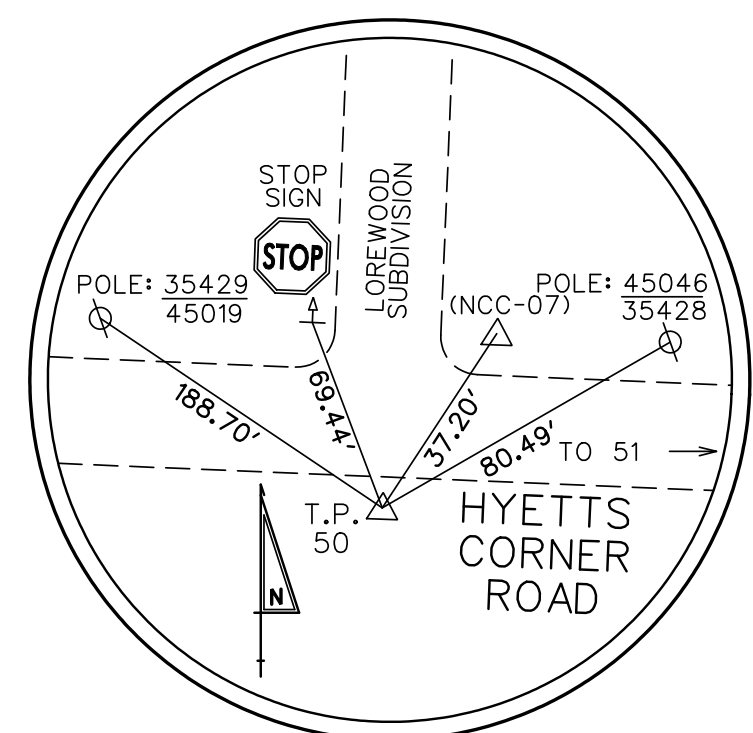
1653-000-Controlling-1a-cadd-HV007L01_1A.dgn 10/20/2012 2:40:36 PM



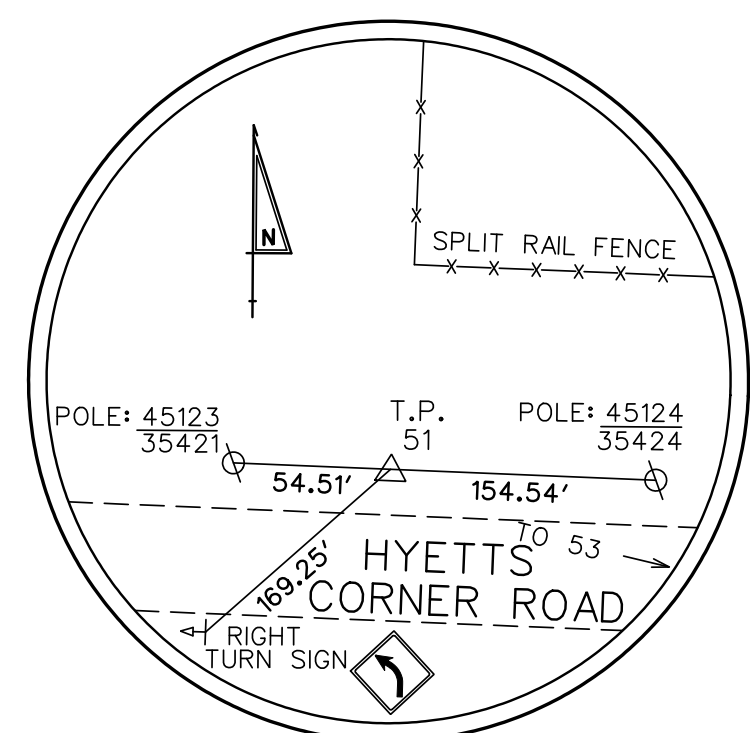
TRAVERSE POINT #47
CONCRETE MONUMENT



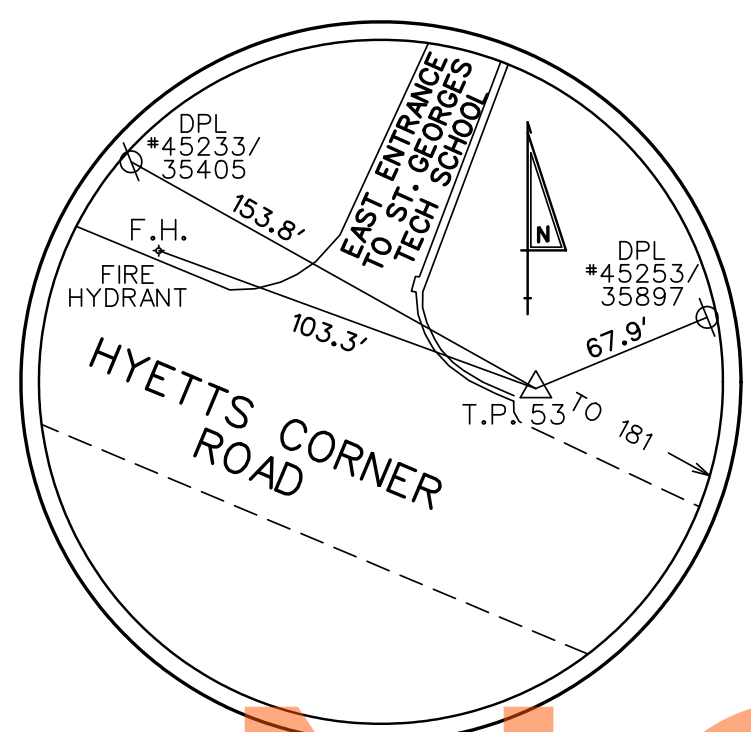
TRAVERSE POINT #48
REBAR AND CAP



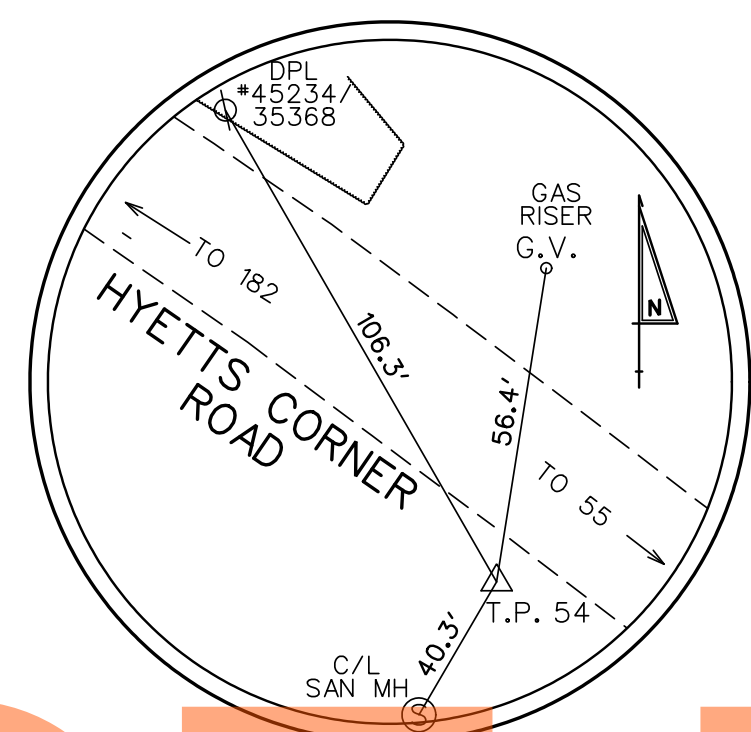
TRAVERSE POINT #50
REBAR AND CAP



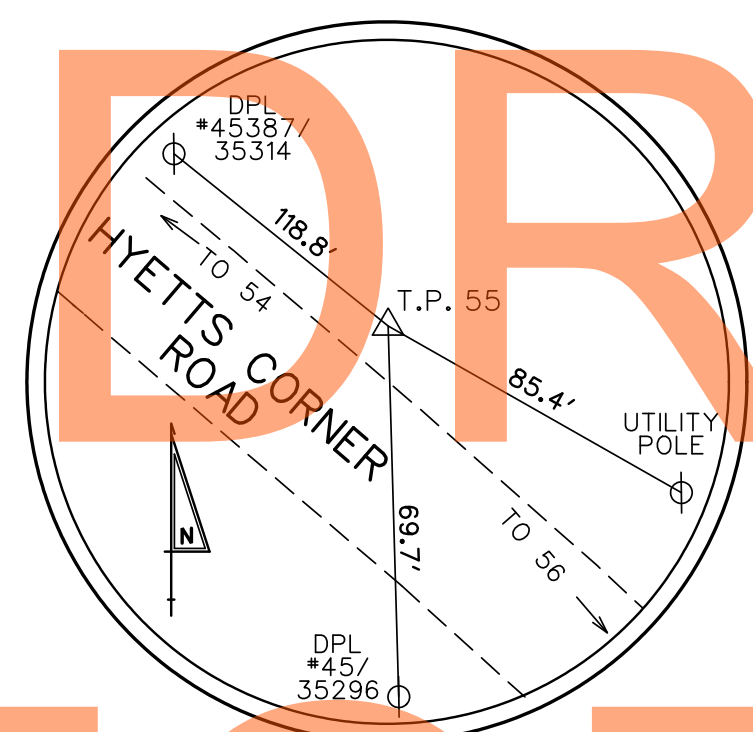
TRAVERSE POINT #51
REBAR AND CAP



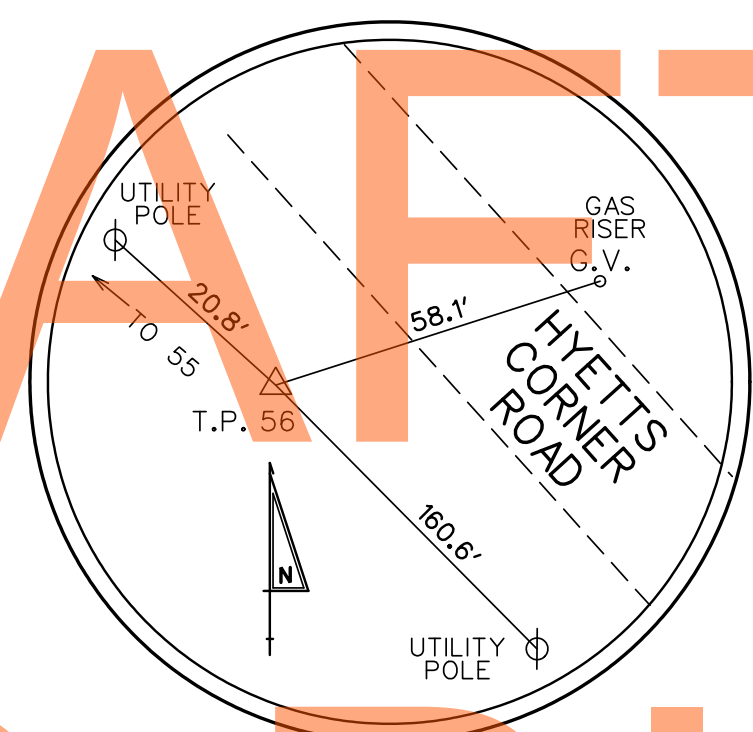
TRAVERSE POINT #53
REBAR AND CAP



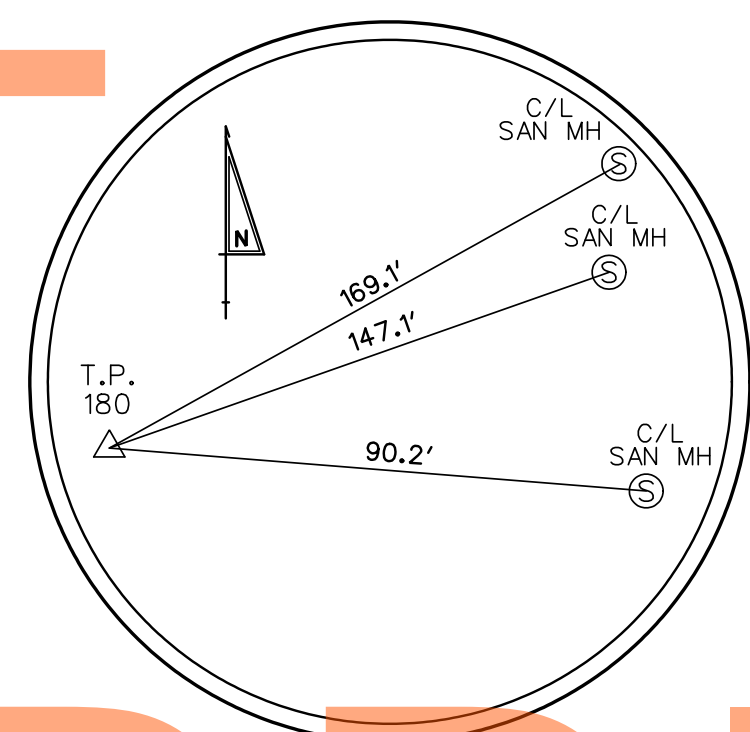
TRAVERSE POINT #54
REBAR AND CAP



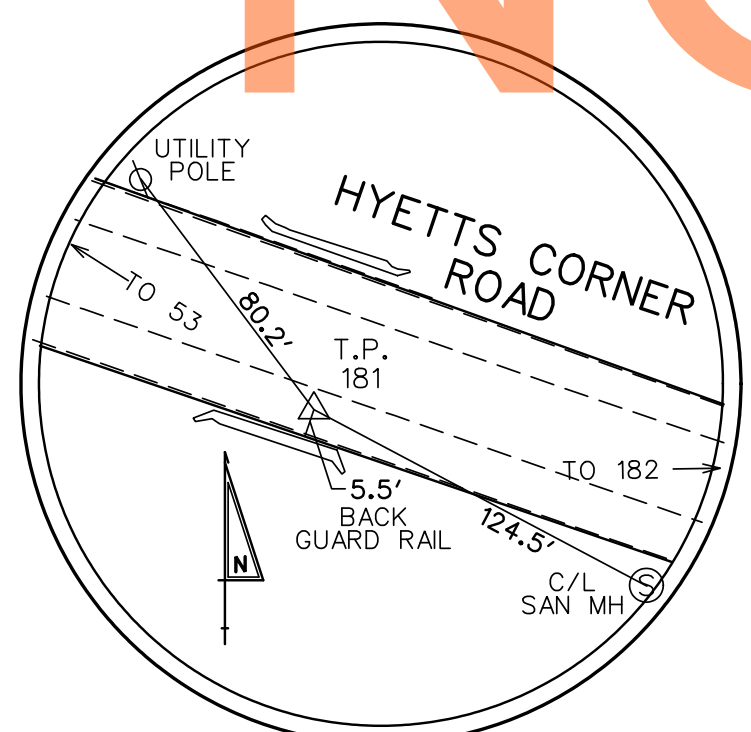
TRAVERSE POINT #55
REBAR AND CAP



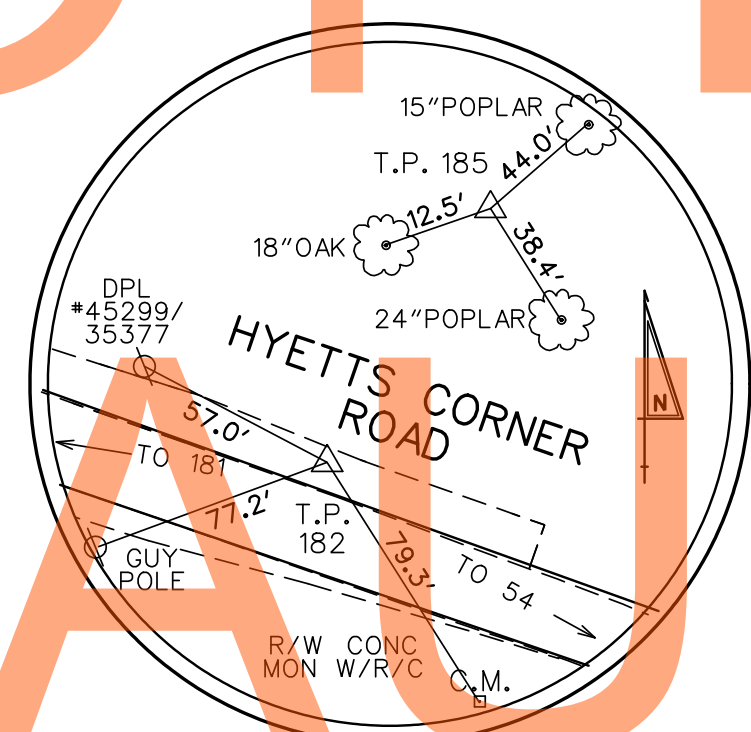
TRAVERSE POINT #56
CONCRETE MONUMENT



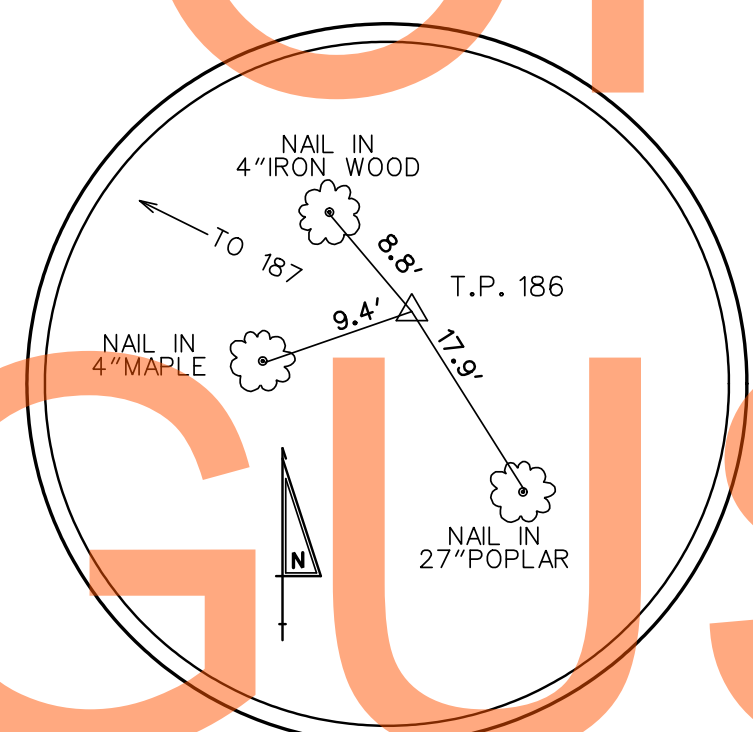
TRAVERSE POINT #180
REBAR AND CAP



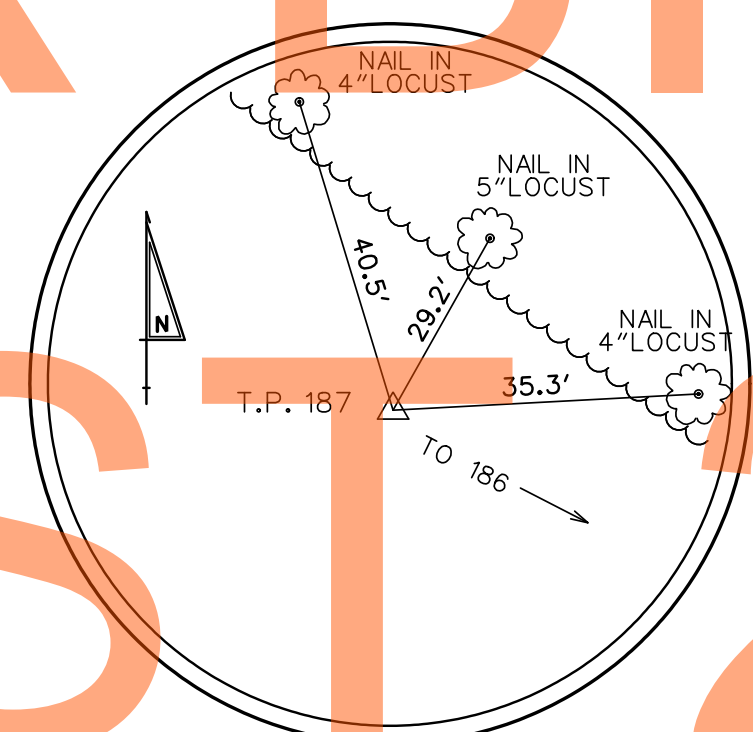
TRAVERSE POINT #181
MAG NAIL



TRAVERSE POINT #182 - MAG NAIL
TRAVERSE POINT #185 - PK NAIL



TRAVERSE POINT #186
PK NAIL



TRAVERSE POINT #187
PK NAIL

DRAFT
NOT FOR BIDDING
AUGUST 2015

p:\1653-000\centric\1a\card\HV008U301_1A.dgn 07/30/2012 2:49:00 PM