

HORIZONTAL / VERTICAL CONTROL DATA					
POINT	STATION	OFFSET	NORTHING	EASTING	ELEVATION
63	1784+62.52	107.88' LT.	556854.7204	590193.3789	34.15'
64	1800+19.50	78.87' LT.	558390.8221	590377.2921	24.42'
363	151+54.64	1.03' LT.	557434.3376	590641.7036	20.43'
364	158+62.00	68.21' LT.	558142.1516	590579.4495	23.41'

CONSTRUCTION ALIGNMENT CONTROL					
POINT	STATION	OFFSET	NORTHING	EASTING	
11004	141+15.02	0.00'	556394.7416	590635.5070	
	145+00.00	0.00'	556779.7080	590638.1849	
	150+00.00	0.00'	557279.6959	590641.6629	
	155+00.00	0.00'	557779.6838	590645.1409	
11005	159+26.77	0.00'	558206.4399	590648.1094	
11003	161+01.38	0.67' LT	558381.0534	590649.3241	
11007	162+76.00	0.00'	558555.6282	590653.1991	
	165+00.00	0.00'	558779.5778	590658.1702	
11021	311+00.00	0.00'	556326.2742	590400.6166	
	315+00.00	0.00'	556722.5031	590455.4134	
11017	318+31.09	0.00'	557050.4700	590500.7698	
11012	322+80.44	13.95' RT	557495.5845	590562.3272	
11019	327+28.64	0.00'	557944.8957	590568.2953	
11013	329+66.55	0.00'	558182.7883	590571.4552	
11030	842+48.05	0.00'	556117.4301	589068.3509	
11035	847+07.08	0.00'	556309.7394	589485.1561	

CONSTRUCTION ALIGNMENT CONTROL					
POINT	STATION	OFFSET	NORTHING	EASTING	
11031	858+61.08	333.47' RT	556793.2018	590532.9974	
11037	867+66.25	0.00'	557947.0963	590548.3230	
	870+00.00	0.00'	558180.8221	590551.4273	
	875+00.00	0.00'	558680.7780	590558.0675	
11051	1004+94.76	11.52' LT	558563.9695	590414.6154	
11056	1009+81.26	0.00'	558079.7851	590360.2533	
11052	1023+68.13	364.01' LT	556701.5748	590205.5139	
11058	1035+06.96	0.00'	556120.5512	588946.2206	
11059	1038+95.42	0.00'	555957.8063	588593.4922	
100835	1779+00.00	0.00'	556282.6514	590221.7631	
	1780+00.00	0.00'	556381.6744	590235.7077	
	1785+00.00	0.00'	556876.7892	590305.4311	
100837	1788+25.60	0.00'	557199.2097	590350.8353	
11071	1795+26.46	21.20' RT	557893.2162	590448.5671	
100839	1802+25.60	0.00'	558593.9445	590461.8473	

SEE SHEET HV-04 FOR CURVE DATA

SEE SHEET HV-04 FOR CURVE DATA

BEGIN CONTRACT T200911302 STATION 848+00

LIMIT OF CONSTRUCTION SR 1 STATION 1779+90

LIMIT OF CONSTRUCTION RAMP R STATION 316+00

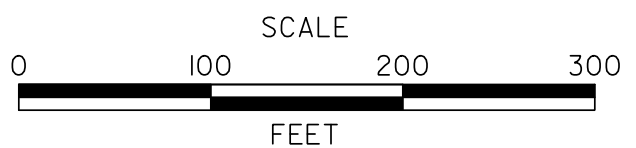
LIMIT OF CONSTRUCTION US 13 STATION 144+67

DATUM REFERENCE:
 HORIZONTAL - THIS PROJECT IS REFERENCED TO THE DELAWARE STATE PLANE COORDINATE SYSTEM (NAD 83-2007).
 VERTICAL - THIS PROJECT IS REFERENCED TO NAVD 88 BASED ON THE FOLLOWING STATE OF DELAWARE BENCHMARK

POINT ELEV.
 JU1066 64.03



ADDENDUMS / REVISIONS



US 301 & SR 1 INTERCHANGE

CONTRACT T200911302	BRIDGE NO.
COUNTY NEW CASTLE	DESIGNED BY: K.A.H.
	CHECKED BY: B.R.T.

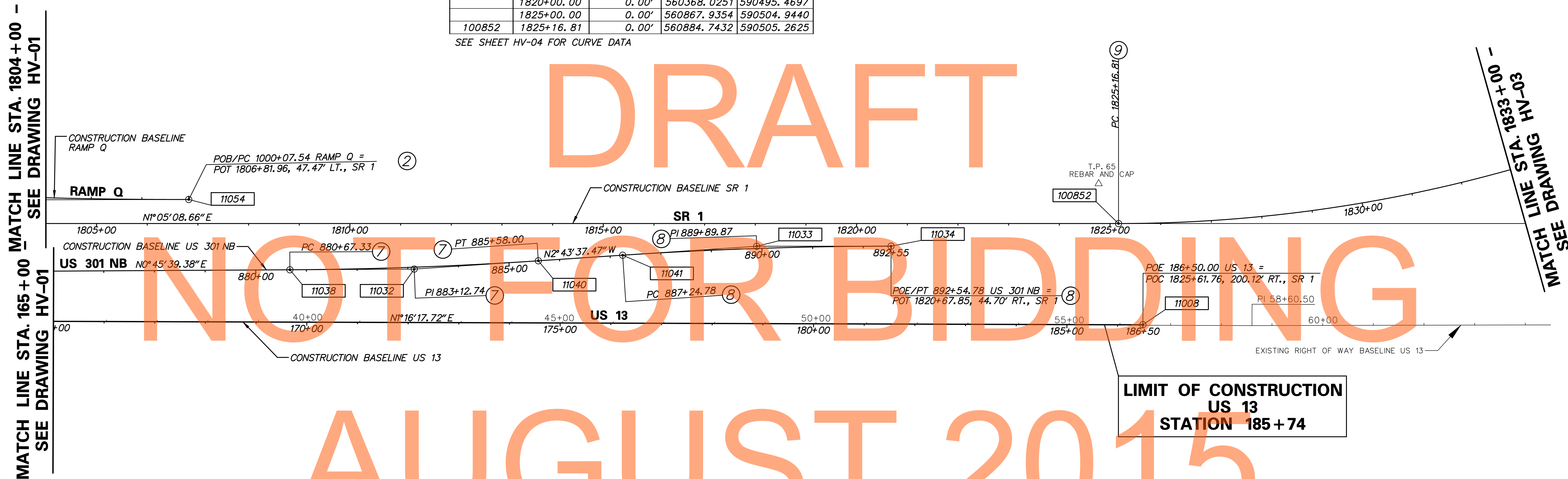
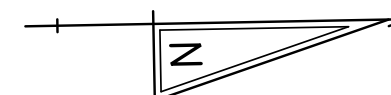
HORIZONTAL AND VERTICAL CONTROL

HV-01
SHEET NO. 32
TOTAL SHTS. 491

HORIZONTAL / VERTICAL CONTROL DATA					
POINT	STATION	OFFSET	NORTHING	EASTING	ELEVATION
65	1824+77.58	78.66' LT.	560847.0084	590425.8688	36.48

CONSTRUCTION ALIGNMENT CONTROL					
POINT	STATION	OFFSET	NORTHING	EASTING	
	165+00.00	0.00'	558779.5778	590658.1702	
	170+00.00	0.00'	559279.4547	590669.2659	
	175+00.00	0.00'	559779.3316	590680.3617	
	180+00.00	0.00'	560279.2085	590691.4575	
	185+00.00	0.00'	560779.0853	590702.5533	
11008	186+50.00	0.00'	560929.0484	590705.8821	
	880+00.00	0.00'	559180.7339	590564.7078	
11038	880+67.33	0.00'	559248.0586	590565.6019	
11032	883+12.74	3.74' RT	559493.4484	590568.8611	
11040	885+58.00	0.00'	559738.5818	590557.1848	
11041	887+24.78	0.00'	559905.1706	590549.2498	
11033	889+89.87	4.36' LT	560169.9637	590536.6371	
11034	892+54.78	0.00'	560435.0133	590541.4508	
11054	1000+07.54	0.00'	559051.1235	590423.0297	
	1805+00.00	0.00'	558868.2944	590467.0468	
	1810+00.00	0.00'	559368.2047	590476.5211	
	1815+00.00	0.00'	559868.1149	590485.9954	
	1820+00.00	0.00'	560368.0251	590495.4697	
	1825+00.00	0.00'	560867.9354	590504.9440	
100852	1825+16.81	0.00'	560884.7432	590505.2625	

SEE SHEET HV-04 FOR CURVE DATA



DRAFT

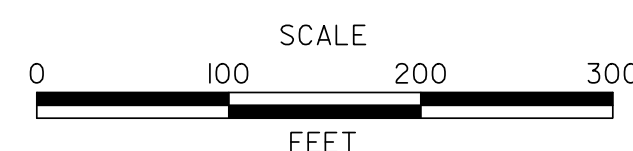
NOT FOR BIDDING

AUGUST 2015

P:\1653-000\centric\1b\cadd\HV002\1301_1B.dgn
 2/27/2015 3:56:02 PM



ADDENDUMS / REVISIONS



US 301 &
SR 1 INTERCHANGE

CONTRACT	BRIDGE NO.
T200911302	
COUNTY	DESIGNED BY: K.A.H.
NEW CASTLE	CHECKED BY: B.R.T.

HORIZONTAL AND
VERTICAL CONTROL

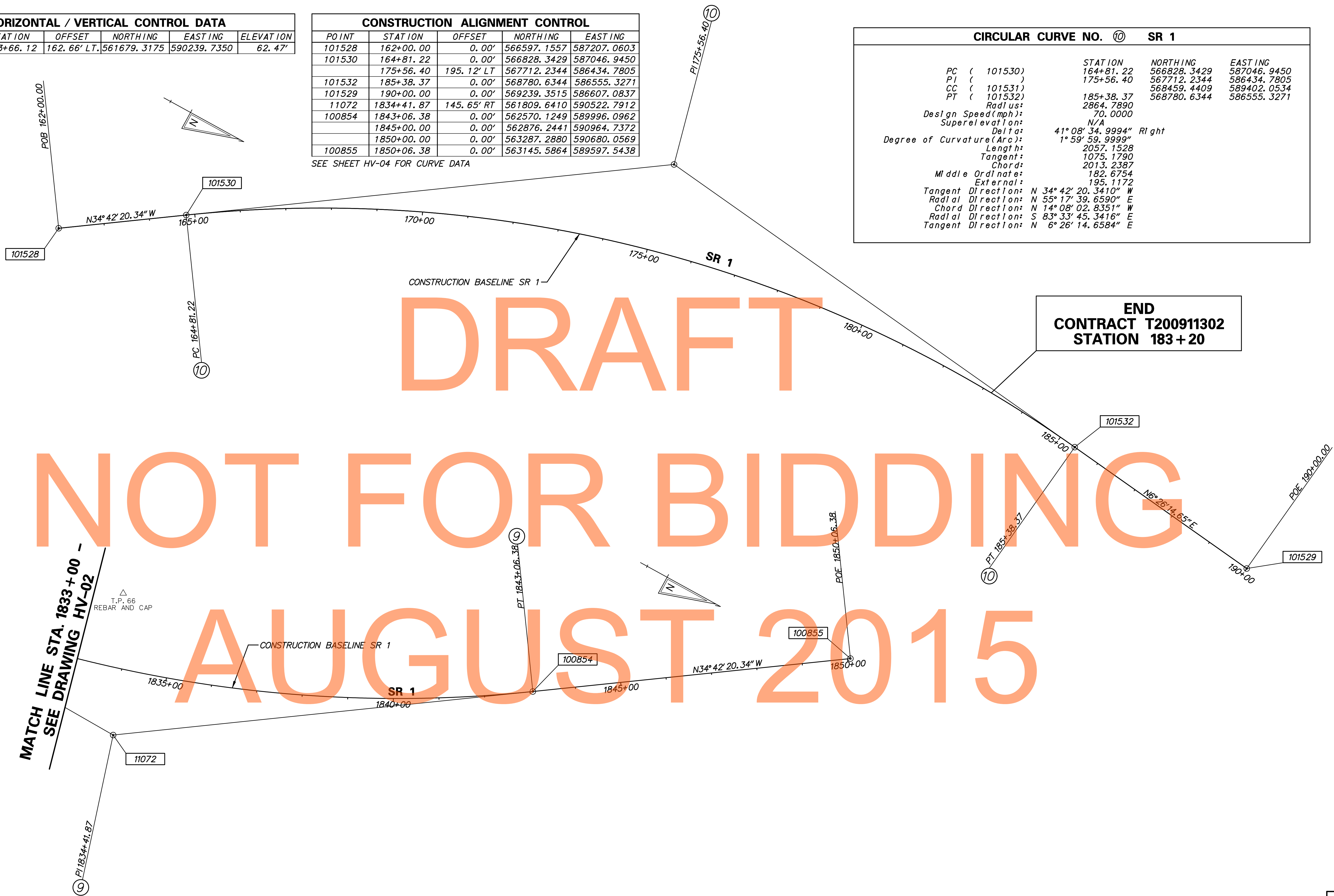
HV-02
SHEET NO.
33
TOTAL SHTS.
491

HORIZONTAL / VERTICAL CONTROL DATA					
POINT	STATION	OFFSET	NORTHING	EASTING	ELEVATION
66	1833+66.12	162.66' LT.	561679.3175	590239.7350	62.47'

CONSTRUCTION ALIGNMENT CONTROL				
POINT	STATION	OFFSET	NORTHING	EASTING
101528	162+00.00	0.00'	566597.1557	587207.0603
101530	164+81.22	0.00'	566828.3429	587046.9450
	175+56.40	195.12' LT	567712.2344	586434.7805
101532	185+38.37	0.00'	568780.6344	586555.3271
101529	190+00.00	0.00'	569239.3515	586607.0837
11072	1834+41.87	145.65' RT	561809.6410	590522.7912
100854	1843+06.38	0.00'	562570.1249	589996.0962
	1845+00.00	0.00'	562876.2441	590964.7372
	1850+00.00	0.00'	563287.2880	590680.0569
100855	1850+06.38	0.00'	563145.5864	589597.5438

SEE SHEET HV-04 FOR CURVE DATA

CIRCULAR CURVE NO. 10 SR 1			
	STATION	NORTHING	EASTING
PC (101530)	164+81.22	566828.3429	587046.9450
PI ()	175+56.40	567712.2344	586434.7805
CC (101531)		568459.4409	589402.0534
PT (101532)	185+38.37	568780.6344	586555.3271
Radius:	2864.7890		
Design Speed (mph):	70.0000		
Superelevation:	N/A		
Delta:	41° 08' 34.9994" Right		
Degree of Curvature (Arc):	1° 59' 59.9999"		
Length:	2057.1528		
Tangent:	1075.1790		
Chord:	2013.2387		
Middle Ordinate:	182.6754		
External:	195.1172		
Tangent Direction:	N 34° 42' 20.3410" W		
Radial Direction:	N 55° 17' 39.6590" E		
Chord Direction:	N 14° 08' 02.8351" W		
Radial Direction:	S 83° 33' 45.3416" E		
Tangent Direction:	N 6° 26' 14.6584" E		



MATCH LINE STA. 1833+00 -
SEE DRAWING HV-02

△ T.P. 66
REBAR AND CAP

CONSTRUCTION BASELINE SR 1

SR 1

100854

100855

11072

PT 1843+06.38

POE 1850+06.38

PT 185+38.37

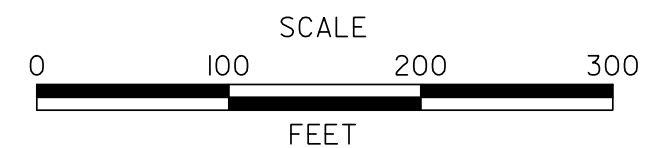
101532

101529

\\p1653-000\cent\csl\p\cead\HV003\0301_1B.dgn
2/27/2015 3:56:42 PM



ADDENDUMS / REVISIONS	



US 301 &
SR 1 INTERCHANGE

CONTRACT T200911302	BRIDGE NO.
COUNTY NEW CASTLE	DESIGNED BY: K.A.H.
	CHECKED BY: B.R.T.

HORIZONTAL AND VERTICAL CONTROL	SHEET NO.
	TOTAL SHTS.
	491

HV-03

