

ENDWALL SCHEDULE				
NO.	SIZE/TYPE	STATION	OFFSET	INVERT
401	48" RCP	853+23.28	121.11	30.00

SEE SHEET GR-01 FOR LOC

MANHOLE SCHEDULE					
NO.	STATION	OFFSET	SIZE	T.G. EL.	INV. EL.
415	853+42.54	-46.48	48" x 48"	53.62	43.02

FLARED END SECTION SCHEDULE			
NO.	SIZE / TYPE	SLOPE	SAFETY GRATE
401	18" RCP	0.0092	NO
402	18" RCP	0.0316	NO
410	18" RCP	0.0092	YES

UNDERDRAIN OUTLETS		
NO.	LENGTH	DIS. EL.
001	22.92	42.93
002	22.13	50.11
003	47.81	47.71
004	26.87	50.46
005	52.35	47.72

SEE BORROW SITE GRADING, SHEET GR-01

**LIMIT OF CONSTRUCTION RAMP Q STATION 1028+50**

**BEGIN CONTRACT T200911302 STATION 848+00**

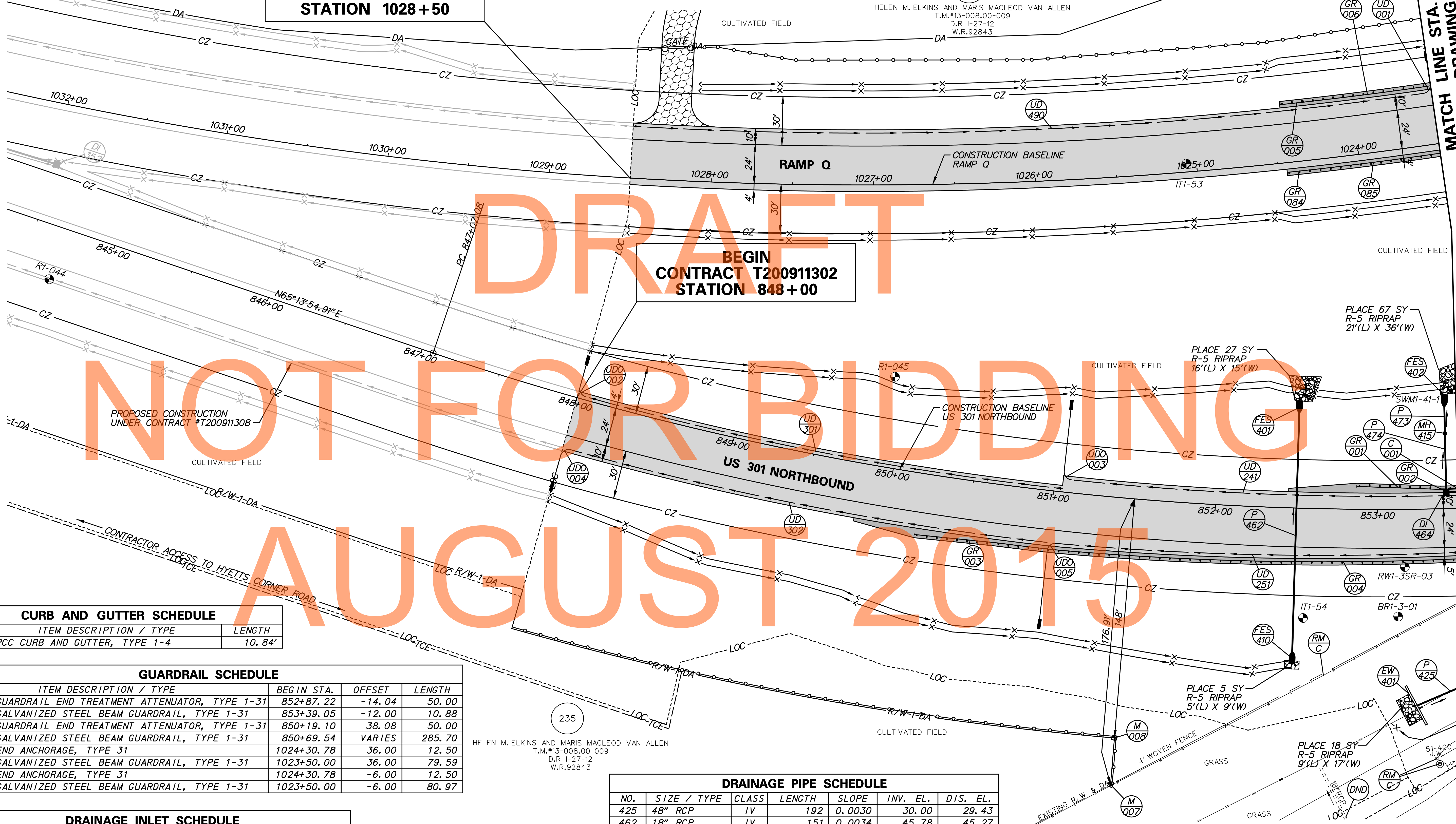
DRAFT

NOT FOR BIDDING

AUGUST 2015

MATCH LINE STA. 1023+50 - SEE DRAWING CP-02

MATCH LINE STA. 853+50 - SEE DRAWING CP-02



CURB AND GUTTER SCHEDULE		
NO.	ITEM DESCRIPTION / TYPE	LENGTH
001	PCC CURB AND GUTTER, TYPE 1-4	10.84'

GUARDRAIL SCHEDULE				
NO.	ITEM DESCRIPTION / TYPE	BEGIN STA.	OFFSET	LENGTH
001	GUARDRAIL END TREATMENT ATTENUATOR, TYPE 1-31	852+87.22	-14.04	50.00
002	GALVANIZED STEEL BEAM GUARDRAIL, TYPE 1-31	853+39.05	-12.00	10.88
003	GUARDRAIL END TREATMENT ATTENUATOR, TYPE 1-31	850+19.10	38.08	50.00
004	GALVANIZED STEEL BEAM GUARDRAIL, TYPE 1-31	850+69.54	VARIABLE	285.70
005	END ANCHORAGE, TYPE 31	1024+30.78	36.00	12.50
006	GALVANIZED STEEL BEAM GUARDRAIL, TYPE 1-31	1023+50.00	36.00	79.59
084	END ANCHORAGE, TYPE 31	1024+30.78	-6.00	12.50
085	GALVANIZED STEEL BEAM GUARDRAIL, TYPE 1-31	1023+50.00	-6.00	80.97

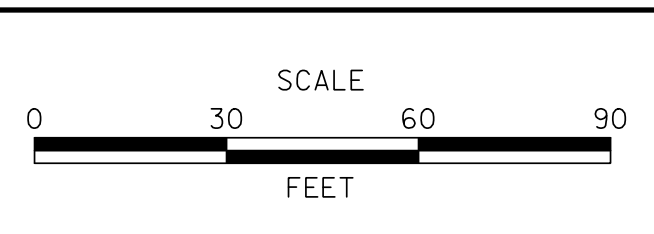
DRAINAGE INLET SCHEDULE						
NO.	STATION	OFFSET	BOX SIZE	GRATE	T.G. EL.	INV. EL.
464	853+42.53	-12.00	48" x 30"	2	64.63	54.13

DRAINAGE PIPE SCHEDULE						
NO.	SIZE / TYPE	CLASS	LENGTH	SLOPE	INV. EL.	DIS. EL.
425	48" RCP	IV	192	0.0030	30.00	29.43
462	18" RCP	IV	151	0.0034	45.78	45.27
473	18" RCP	IV	16	0.0100	43.02	42.86
474	18" RCP	IV	33	0.0996	54.13	50.90

M:\2009\11302\CONTRACT\B\CADD\CP01\0301\_LB.dgn 2/20/2015 2:52:51 PM



ADDENDUMS / REVISIONS	



**US 301 & SR 1 INTERCHANGE**

CONTRACT	BRIDGE NO.	<b>BR1-433</b>
T200911302	DESIGNED BY:	J.A.D.
COUNTY	CHECKED BY:	B.R.T.
NEW CASTLE		

<b>CONSTRUCTION PLAN</b>	SHEET NO.	36
	TOTAL SHTS.	491

CP-01

GUARDRAIL SCHEDULE				
NO.	ITEM DESCRIPTION / TYPE	BEGIN STA.	OFFSET	LENGTH
007	GALVANIZED STEEL BEAM GUARDRAIL, TYPE 1-31	853+50.00	-12.00	189.12
008	GUARDRAIL TO BARRIER CONN., APPROACH TYPE 1-31	855+40.37	-12.00	19.75
009	GALVANIZED STEEL BEAM GUARDRAIL, TYPE 1-31	853+50.00	VARIABLES	39.30
010	GUARDRAIL TO BARRIER CONN., APPROACH TYPE 1-31	853+88.64	30.391	19.75
011	GALVANIZED STEEL BEAM GUARDRAIL, TYPE 1-31	1021+89.75	36.00	157.91
012	GUARDRAIL END TREATMENT ATTENUATOR, TYPE 1-31	1021+37.50	36.00	50.00
013	END ANCHORAGE, TYPE 31	1782+05.82	-137.00	12.50
014	GALVANIZED STEEL BEAM GUARDRAIL, TYPE 1-31	1782+19.33	-135.19	200.00
015	GUARDRAIL TO BARRIER CONN., EXIT TYPE 31	1784+17.31	-107.16	11.50
086	GALVANIZED STEEL BEAM GUARDRAIL, TYPE 1-31	1021+19.04	-6.00	231.53
087	GUARDRAIL END TREATMENT ATTENUATOR, TYPE 1-31	1020+67.72	-6.00	50.00

BARRIER SCHEDULE				
NO.	ITEM DESCRIPTION / TYPE	BEGIN STA.	OFFSET	LENGTH
201	CONCRETE SINGLE FACE BARRIER, TYPE 2	1784+28.73	-105.82	118.10
202	BARRIER WALL 1	1785+46.26	-94.25	121.00

DRAINAGE INLET SCHEDULE						
NO.	STATION	OFFSET	BOX SIZE	GRATE	T.G. EL.	INV. EL.
450	855+45.23	-12.00	48" x 30"	2	69.37	63.75

DRAINAGE PIPE SCHEDULE						
NO.	SIZE / TYPE	CLASS	LENGTH	SLOPE	INV. EL.	DIS. EL.
402	18" RCP	IV	31	0.0993	37.95	34.88
409	18" RCP	IV	198	0.0239	63.75	59.01
450	48" RCP	IV	150	0.0030	29.23	28.78
466	48" RCP	IV	242	0.0030	28.58	27.85

CURB AND GUTTER SCHEDULE		
NO.	ITEM DESCRIPTION / TYPE	LENGTH
002	PCC CURB AND GUTTER, TYPE 1-4	209.10'

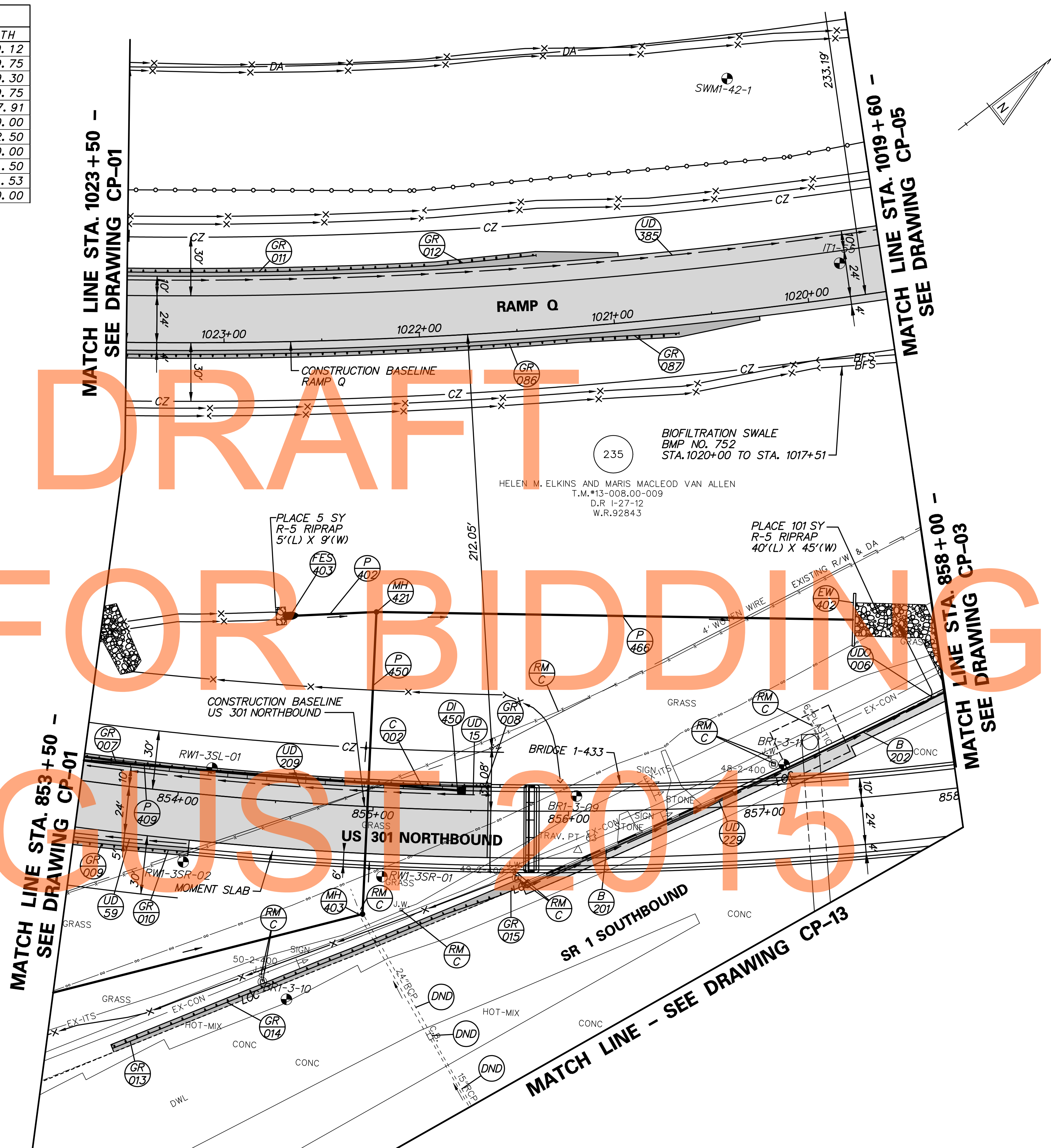
MANHOLE SCHEDULE					
NO.	STATION	OFFSET	SIZE	T.G. EL.	INV. EL.
*403	854+97.37	55.06	66" x 66"	40.50	29.23
421	854+96.60	-99.70	66" x 66"	37.59	28.58

\*MANHOLE SHALL BE CAST IN PLACE TO CONNECT TO EXISTING PIPES AS SHOWN & IN ACCORDANCE WITH STANDARD D-5

ENDWALL SCHEDULE				
NO.	SIZE / TYPE	STATION	OFFSET	INVERT
402	48" RCP	837+53.83	-91.09	27.85

FLARED END SECTION SCHEDULE			
NO.	SIZE / TYPE	SLOPE	SAFETY GRATE
403	18" RCP	0.0993	YES

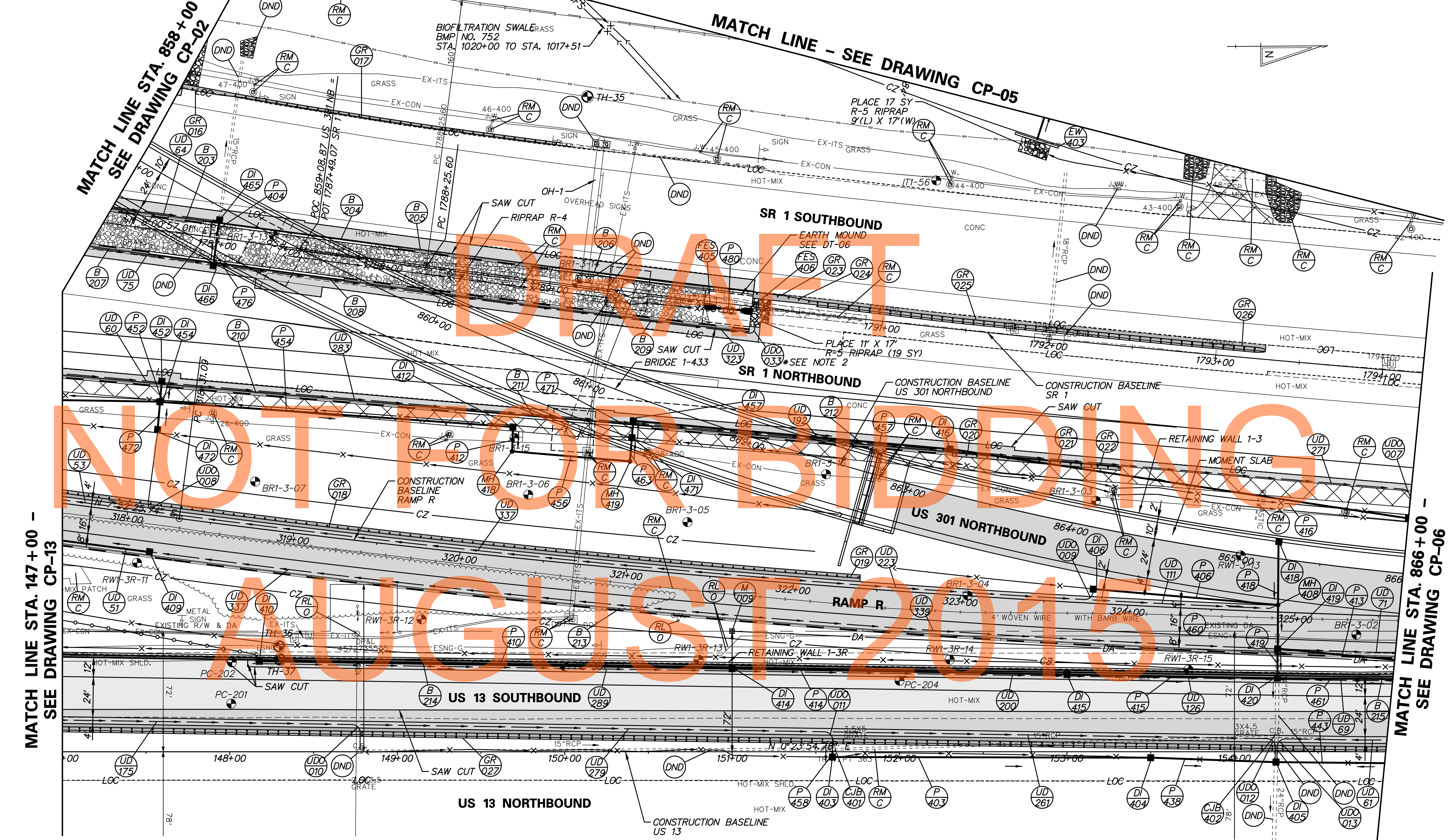
UNDERDRAIN OUTLETS		
NO.	LENGTH	DIS. EL.
006	40.40	28.23



DRAFT  
NOT FOR BIDDING  
AUTOCAD 2015

P:\31653-000\31653.dwg

- NOTES:
- SEE SHEET CP-04 FOR CONSTRUCTION SCHEDULES.
  - TIE-IN PROPOSED UNDERDRAIN WITH EXISTING UNDERDRAIN.



DRAFT

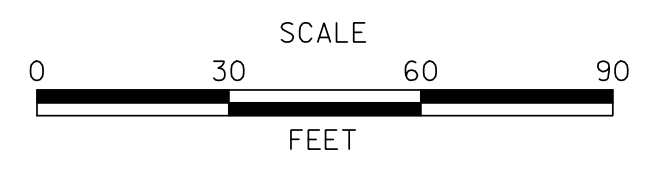
NOT FOR BIDDING

AUGUST 2015

P:\31653-000\construct\p\c\cad\CP003\301\_1B.dgn 5/30/2015 11:44:52 AM



ADDENDUMS / REVISIONS	



**US 301 & SR 1 INTERCHANGE**

CONTRACT	T200911302	BRIDGE NO.	BR1-433, RW1-3 & RW1-3R
COUNTY	NEW CASTLE	DESIGNED BY:	J.A.D.
		CHECKED BY:	B.R.T.

**CONSTRUCTION PLAN**

CP-03	
SHEET NO.	38
TOTAL SHTS.	491

DRAINAGE PIPE SCHEDULE						
NO.	SIZE / TYPE	CLASS	LENGTH	SLOPE	INV. EL.	DIS. EL.
403	18" RCP	IV	188	0.0056	17.09	16.04
404	15" RCP	IV	8	0.0057	29.26	29.22
406	18" RCP	IV	108	0.0404	56.51	52.16
410	18" RCP	IV	279	0.0070	19.85	17.91
412	24" RCP	IV	11	0.0030	26.28	26.25
413	12" RCP	IV	119	0.0050	51.21	50.62
414	18" RCP	IV	197	0.0036	17.91	17.20
415	18" RCP	IV	122	0.0040	17.20	16.71
416	24" RCP	IV	275	0.0030	24.62	23.80
418	18" RCP	IV	34	0.0095	52.48	52.16
*419	20" DIP	-	-	-	-	-
438	18" RCP	IV	73	0.0030	15.94	15.72
443	15" RCP	IV	73	0.0075	16.89	16.35
452	18" RCP	IV	9	0.0036	27.34	27.31
454	24" RCP	IV	209	0.0030	27.11	26.49
456	24" RCP	IV	67	0.0030	26.15	25.95
457	24" RCP	IV	183	0.0030	25.30	24.75
458	18" RCP	IV	2	0.0176	17.12	17.09
460	18" RCP	IV	25	0.0084	51.96	51.76
461	18" RCP	IV	118	0.0030	17.06	16.71
463	24" RCP	IV	11	0.0030	25.75	25.72
471	24" RCP	IV	6	0.0036	25.52	25.50
472	18" RCP	IV	13	0.0034	27.35	27.31
476	15" RCP	IV	15	0.0061	29.35	29.26
480	15" RCP	IV	17	0.0030	31.50	31.45

\*SEE SPECIAL DETAIL FOR INLET DI-419, SEE SHEET DT-17

DRAINAGE INLET SCHEDULE						
NO.	STATION	OFFSET	BOX SIZE	GRATE	T.G. EL.	INV. EL.
403	151+59.95	3.13	48"x30"	2	20.66	17.09
404	153+50.00	-3.56	34"x18"	2	20.09	15.94
*405	154+24.83	6.19	48"x30"	2	19.87	15.60
406	323+78.95	-8.54	34"x24"	2	61.57	56.51
409	318+16.06	23.98	***48"x30"	2	58.47	52.12
410	148+17.63	-55.11	***48"x30"	1	24.41	19.85
412	320+23.67	-78.02	48"x48"	2	34.53	26.28
414	151+00.01	-50.77	***48"x30"	1	22.27	17.91
415	153+00.02	-47.69	***48"x30"	1	21.61	17.20
416	1791+46.57	73.65	***72"x48"	2	31.75	24.62
418	865+23.89	-12.00	***72"x48"	2	56.63	52.48
*419	324+90.56	23.99	***34"x24"	2	58.54	16.71
*420	154+25.68	-45.76	***48"x30"	1	21.57	16.71
452	1786+78.10	91.32	***72"x48"	2	34.06	27.34
454	318+10.65	-67.62	48"x30"	2	33.57	27.11
457	1789+59.50	78.71	***72"x48"	2	33.02	25.30
*465	1786+99.40	-8.70	***34"x24"	2	34.10	29.20
466	1786+99.38	14.84	***34"x24"	2	34.14	29.35
471	320+95.74	-78.31	48"x48"	2	34.47	25.52
472	318+11.29	-51.07	48"x30"	2	38.74	27.35

\* DRAINAGE INLET SHALL BE CAST IN PLACE TO CONNECT TO EXISTING PIPE AS SHOWN AND SHALL BE IN ACCORDANCE WITH STANDARD D-5

\*\*SEE SPECIAL DETAIL, SHEET DT-17

\*\*\*USE MODIFIED TOP SLAB AND UNIT, SEE DT-09 - DT-12

ROADWAY CORE SCHEDULE			
NO.	STATION	OFFSET	DESCRIPTION
PC-201	148+00.85	28.72' LT.	7.25" HMA, 8" PCC
PC-202	148+01.21	58.41' LT.	11.25" HMA
PC-204	152+00.00	28.12' LT.	13.75" HMA, 8" PCC

ENDWALL SCHEDULE				
NO.	SIZE/TYPE	STATION	OFFSET	INVERT
403	48" RCP	1015+00.00	-30.79	25.20

GUARDRAIL SCHEDULE				
NO.	ITEM DESCRIPTION / TYPE	BEGIN STA.	OFFSET	LENGTH
016	GUARDRAIL TO BARRIER CONN., APPROACH TYPE 1-31	1786+66.96	-85.77	19.75
017	GALVANIZED STEEL BEAM GUARDRAIL, TYPE 1-31	1786+86.68	-84.75	215.63
018	GALVANIZED STEEL BEAM GUARDRAIL, TYPE 1-31	317+59.90	-6.00	465.10
019	END ANCHORAGE, TYPE 31	322+25.33	-6.00	12.50
020	GUARDRAIL TO BARRIER CONN., EXIT TYPE 31	1791+50.00	73.57	11.50
021	GALVANIZED STEEL BEAM GUARDRAIL, TYPE 1-31	1791+61.43	73.33	75.00
022	END ANCHORAGE, TYPE 31	1792+35.95	72.20	12.50
023	GUARDRAIL TO BARRIER CONN., APPROACH TYPE 1-31	1790+21.41	-8.69	19.75
024	GALVANIZED STEEL BEAM GUARDRAIL, TYPE 1-31	1790+41.16	-8.57	18.75
025	GALVANIZED STEEL BEAM GUARDRAIL, TYPE 3-31	1790+59.86	-5.84	218.75
026	GUARDRAIL END TREATMENT ATTENUATOR, TYPE 3-31	1792+78.73	-5.24	50.00
027	GALVANIZED STEEL BEAM GUARDRAIL, TYPE 3-31	147+00.00	-14.92	790.61

MANHOLE SCHEDULE					
NO.	STATION	OFFSET	SIZE	T.G. EL.	INV. EL.
408	324+89.77	-4.23	48"X48"	58.51	51.96
418	320+24.69	-63.07	48"X48"	41.30	26.15
419	320+95.99	-64.10	48"X48"	41.56	25.75

FLARED END SECTION SCHEDULE			
NO.	SIZE / TYPE	SLOPE	SAFETY GRATE
405	15" RCP	0.0062	NO
406	15" RCP	0.0030	NO

BARRIER SCHEDULE				
NO.	ITEM DESCRIPTION / TYPE	BEGIN STA.	OFFSET	LENGTH
203	CONCRETE SINGLE FACE BARRIER, TYPE 1	1786+34.57	-8.70	55.34
204	BARRIER WALL III	1786+89.91	-8.70	117.67
205	CONCRETE SINGLE FACE BARRIER, TYPE 1	1788+07.57	-8.70	92.71
206	BARRIER WALL IV	1789+00.34	-8.70	120.99
207	CONCRETE SINGLE FACE BARRIER, TYPE 1	1786+24.57	14.85	35.71
208	BARRIER WALL V	1786+60.28	14.85	117.67
209	CONCRETE SINGLE FACE BARRIER, TYPE 1	1787+77.94	14.85	243.74
210	CONCRETE SINGLE FACE BARRIER, TYPE 2	1786+18.74	94.81	235.78
211	BARRIER WALL VI	1788+54.06	83.09	117.67
212	CONCRETE SINGLE FACE BARRIER, TYPE 2	1789+70.82	78.30	180.42
213	CONCRETE SINGLE FACE BARRIER, TYPE 1	317+63.84	24.00	799.15
214	CONCRETE SINGLE FACE BARRIER, MODIFIED TYPE 1	147+00.00	-56.92	775.09
*215	CONCRETE SINGLE FACE BARRIER, TYPE 2	154+75.00	-45.00	19.76

\* PCC SIDEWALK TO BE PLACED BETWEEN BACK OF BARRIER AND FACE OF RETAINING WALL 1-3R. SEE TS-17 FOR MATERIALS AND DEPTHS.

CONVERT TO JUNCTION BOX SCHEDULE				
NO.	STATION	OFFSET	T.C. EL.	INV. EL.
401	151+59.96	-2.01	21.13	17.12
402	154+25.22	-9.16	21.20	16.12

UTILITY TEST HOLE SCHEDULE						
NO.	UTILITY	STATION	OFFSET	GRND EL.	COVER	O. D. & MATERIAL
TH-35	EX-ITS	1789+08.23	112.59' LT	27.03	0.94	4" BLACK PLASTIC CONDUIT
TH-36	ESNG-G	148+29.43	62.98' LT	23.80	3.23	10" COATED METAL PIPE
TH-37	ESNG-G	148+29.90	55.20' LT	23.88	2.73	16" WRAPPED METAL PIPE

UNDERDRAIN OUTLETS		
NO.	LENGTH	DIS. EL.
007	21.32	27.23
008	48.81	36.85
009	6.30	59.19
010	16.63	20.84
011	14.80	18.93
012	13.78	17.83
013	13.79	17.83
033	10.00	--

P:\31653-000\contract\p\cadd\CP004\301\_IB.dgn 7/30/2015 11:44:55 AM

<b>DELAWARE</b> DEPARTMENT OF TRANSPORTATION	ADDENDUMS / REVISIONS	<b>NOT TO SCALE</b>	<b>US 301 &amp; SR 1 INTERCHANGE</b>	CONTRACT	BRIDGE NO.	<b>CONSTRUCTION PLAN</b>	SHEET NO.
	T200911302				DESIGNED BY: K.A.H.		39
	COUNTY				CHECKED BY: B.R.T.		TOTAL SHTS.
	NEW CASTLE						491

DRAINAGE PIPE SCHEDULE						
NO.	SIZE / TYPE	CLASS	LENGTH	SLOPE	INV. EL.	DIS. EL.
417	48" RCP	IV	20	0.1030	25.20	23.16
464	48" RCP	IV	223	0.0078	22.96	21.23
465	2' x 4' RCB	*	60	0.0031	21.23	21.05
483	2' x 4' RCB	*	60	0.0031	21.23	21.05

\* SEE CONTRACT SPECIAL PROVISIONS.

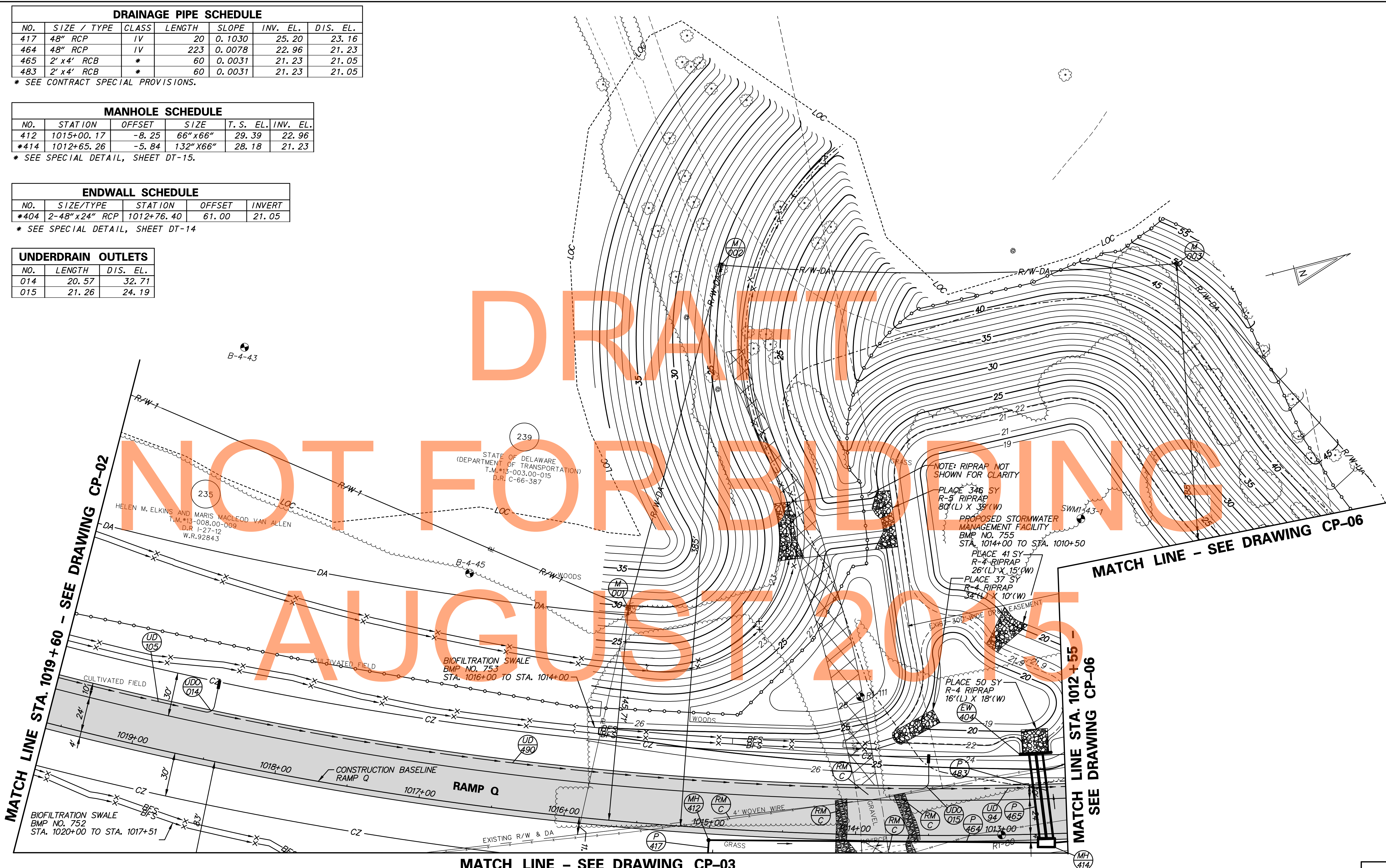
MANHOLE SCHEDULE					
NO.	STATION	OFFSET	SIZE	T.S. EL.	INV. EL.
412	1015+00.17	-8.25	66" x 66"	29.39	22.96
*414	1012+65.26	-5.84	132" X 66"	28.18	21.23

\* SEE SPECIAL DETAIL, SHEET DT-15.

ENDWALL SCHEDULE				
NO.	SIZE/TYPE	STATION	OFFSET	INVERT
*404	2-48" x 24" RCP	1012+76.40	61.00	21.05

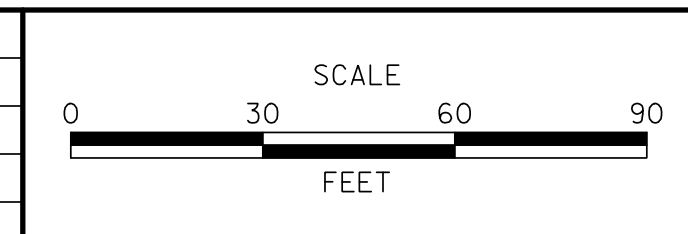
\* SEE SPECIAL DETAIL, SHEET DT-14

UNDERDRAIN OUTLETS			
NO.	LENGTH	DIS.	EL.
014	20.57	32.71	
015	21.26	24.19	



P:\31653-000\enr\contract\p\cadd\CP005\301\_1B.dgn  
 3/30/2015 11:55:05 AM

ADDENDUMS / REVISIONS	



**US 301 & SR 1 INTERCHANGE**

CONTRACT T200911302	BRIDGE NO.
COUNTY NEW CASTLE	DESIGNED BY: J.A.D.
	CHECKED BY: B.R.T.

**CONSTRUCTION PLAN**

CP-05
SHEET NO. 40
TOTAL SHTS. 491

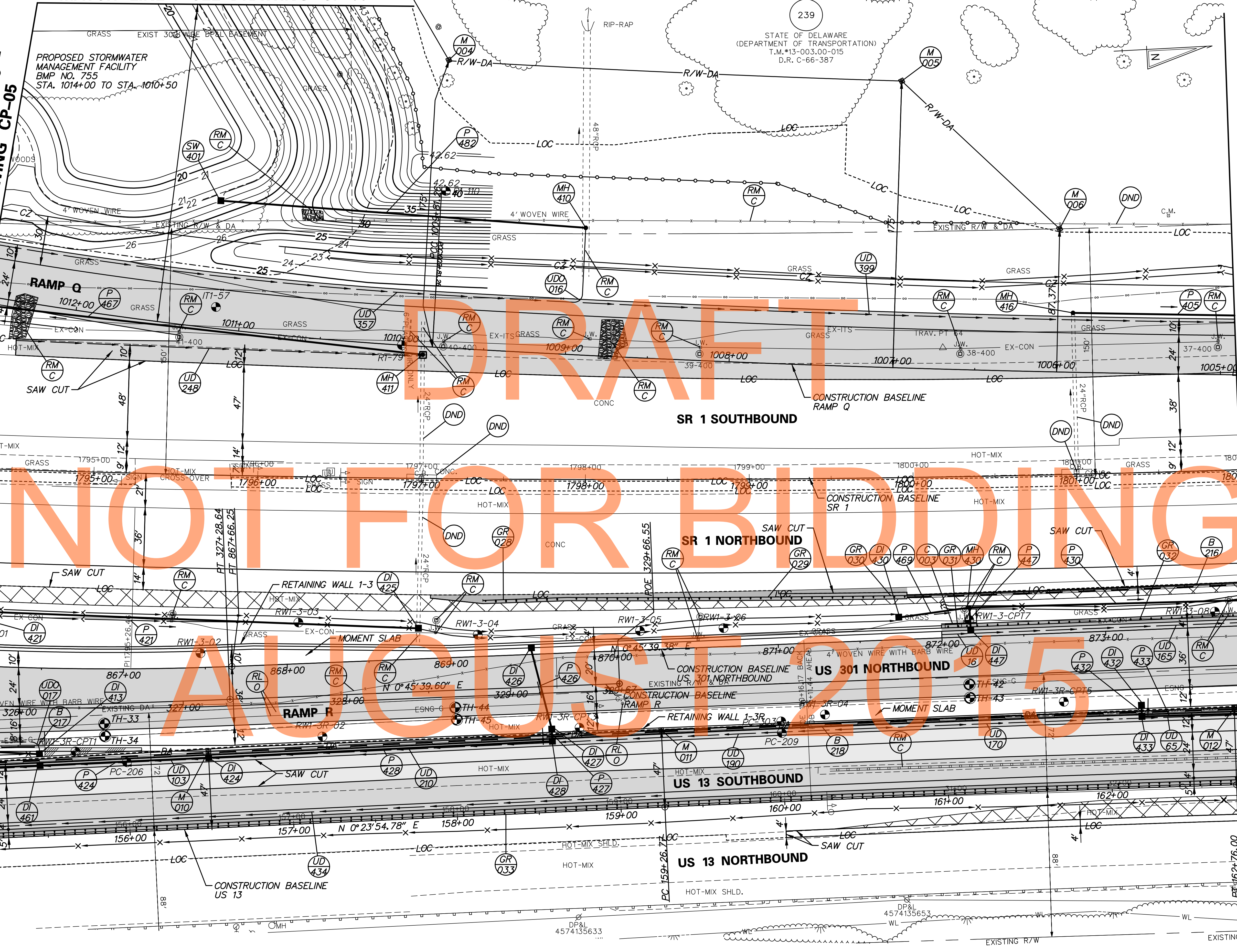
MATCH LINE - SEE DRAWING CP-05

NOTES:  
1. SEE SHEET CP-07 FOR CONSTRUCTION SCHEDULES

MATCH LINE STA. 1012+55 -  
SEE DRAWING CP-05

MATCH LINE STA. 866+00 -  
SEE DRAWING CP-03

MATCH LINE STA. 1802+00 - SEE DRAWING CP-08



NOT FOR BIDDING

CP-06.dwg  
4574135633  
11/25/2015

DRAINAGE INLET SCHEDULE						
NO.	STATION	OFFSET	BOX SIZE	GRATE	T. G. EL.	INV. EL.
411	155+00.00	-6.90	34" x 18"	2	20.09	16.89
413	326+11.54	29.52	34" x 24"	2	53.78	51.21
421	866+00.00	-33.09	34" x 24"	2	28.73	23.70
424	156+50.01	-45.00	**** 48" x 30"	1	22.52	17.36
*425	868+80.96	-18.72	48" x 48"	2	27.00	22.87
426	869+49.36	-6.00	**** 72" x 48"	2	41.98	37.87
**427	329+24.19	28.00	**** 34" x 24"	2	41.69	17.96
428	158+60.00	-45.00	**** 48" x 30"	1	23.72	17.98
430	871+74.13	-14.96	34" x 24"	2	25.22	21.73
***432	873+20.04	48.00	**** 34" x 24"	2	29.14	18.06
433	162+19.69	-45.00	**** 48" x 30"	1	23.63	17.83
447	872+17.75	-6.00	34" x 24"	2	32.59	26.33
461	155+46.96	-45.00	**** 48" x 30"	1	21.92	17.06

\* DRAINAGE INLET SHALL BE CAST IN PLACE TO CONNECT TO EXISTING PIPE AS SHOWN AND SHALL BE IN ACCORDANCE WITH STANDARD D-5

\*\* SEE SPECIAL DETAIL, SHEET DT-17

\*\*\*ANY DRAINAGE INLET OR MANHOLE WITH A STRUCTURE DEPTH EXCEEDING THE MAXIMUM DEPTH PROVIDED IN THE DELDOT STANDARD CONSTRUCTION DETAILS WILL REQUIRE THE CONTRACTOR TO SUBMIT SHOP DRAWINGS IN ACCORDANCE WITH SECTION 105.04 OF THE STANDARD SPECIFICATIONS. COST FOR THESE STRUCTURES WILL BE INCIDENTAL TO THE RESPECTIVE STANDARD ITEM AS SPECIFIED ON THE CONSTRUCTION PLANS.

\*\*\*\*USE MODIFIED TOP SLAB AND UNIT, SEE DT-09 - DT-12

DRAINAGE PIPE SCHEDULE						
NO.	SIZE / TYPE	CLASS	LENGTH	SLOPE	INV. EL.	DIS. EL.
405	24" RCP	IV	158	0.0030	17.23	16.76
421	24" RCP	IV	276	0.0030	23.70	22.87
424	18" RCP	IV	100	0.0030	17.36	17.06
426	18" RCP	IV	48	0.0090	37.87	37.42
*427	20" DIP	-	-	-	-	-
428	18" RCP	IV	206	0.0030	17.98	17.36
430	18" RCP	IV	280	0.0052	21.32	19.88
432	15" RCP	IV	4	0.0098	18.06	18.03
433	18" RCP	IV	276	0.0081	17.83	15.59
447	18" RCP	IV	10	0.0124	26.33	26.21
467	24" RCP	IV	276	0.0030	22.07	21.23
469	18" RCP	IV	41	0.0052	21.73	21.52
482	48" RCP	IV	219	0.0043	19.28	18.35

\* SEE SPECIAL DETAIL FOR INLET DI-427, SHEET DT-17

ROADWAY CORE SCHEDULE				
NO.	STATION	OFFSET	DESCRIPTION	
PC-206	156+00.00	42.59' LT	15.5" HMA, 8" PCC	
PC-209	160+00.00	41.79' LT	16.5" HMA, 8" PCC	

UNDERDRAIN OUTLETS		
NO.	LENGTH	DIS. EL.
016	46.20	20.00
017	7.05	51.38

MANHOLE SCHEDULE					
NO.	STATION	OFFSET	SIZE	T. G. EL.	INV. EL.
*410	1008+91.44	77.71	66" X 66"	30.71	18.29
*411	1009+86.88	-5.01	48" X 48"	27.01	22.07
*416	1005+90.74	36.24	48" X 48"	23.67	17.23
430	872+17.46	-17.82	48" X 48"	28.99	21.32

\* MANHOLE SHALL BE CAST IN PLACE TO CONNECT TO EXISTING PIPE AS SHOWN AND SHALL BE IN ACCORDANCE WITH STANDARD D-5

BARRIER SCHEDULE				
NO.	ITEM DESCRIPTION / TYPE	BEGIN STA.	OFFSET	LENGTH
216	CONCRETE SINGLE FACE BARRIER, TYPE 2	1799+95.21	72.00	205.72
217	CONCRETE SINGLE FACE BARRIER, TYPE 1	325+60.57	24.00	54.63
*218	CONCRETE SINGLE FACE BARRIER, TYPE 1	154+94.76	-45.00	790.37

\* PCC SIDEWALK TO BE PLACED BETWEEN BACK OF BARRIER AND FACE OF RETAINING WALL 1-3R. SEE TS-17 FOR MATERIALS AND DEPTHS.

GUARDRAIL SCHEDULE				
NO.	ITEM DESCRIPTION / TYPE	BEGIN STA.	OFFSET	LENGTH
028	GUARDRAIL END TREATMENT ATTENUATOR, TYPE 1-31	1797+38.11	74.06	50.00
029	GALVANIZED STEEL BEAM GUARDRAIL, TYPE 1-31	1797+89.24	72.00	187.50
030	GUARDRAIL TO BARRIER CONN., APPROACH TYPE 1-31	1799+75.58	72.00	19.75
031	GUARDRAIL TO BARRIER CONN., EXIT TYPE 31	872+00.00	-6.00	11.50
032	GALVANIZED STEEL BEAM GUARDRAIL, TYPE 1-31	872+11.50	-6.00	173.80
033	GALVANIZED STEEL BEAM GUARDRAIL, TYPE 3-31	154+90.66	-3.00	794.04

STORMWATER MANAGEMENT OUTLET STRUCTURE					
NO.	STATION	OFFSET	BOX SIZE	T. S. EL.	INV. EL.
401	1010+88.13	79.94' RT	SEE DETAIL, SHEET SW-04	25.25	19.28

CURB AND GUTTER SCHEDULE		
NO.	ITEM DESCRIPTION / TYPE	LENGTH
003	PCC CURB AND GUTTER, TYPE 1-4	21.17'

UTILITY TEST HOLE SCHEDULE						
NO.	UTILITY	STATION	OFFSET	GRND EL.	COVER	O. D. & MATERIAL
TH-33	ESNG-G	866+88.52	33.50' RT	21.55	3.71	10" COATED METAL PIPE
TH-34	ESNG-G	866+88.96	41.07' RT	22.04	4.36	16" COATED METAL PIPE
TH-42	ESNG-G	872+15.66	29.06' RT	23.09	3.26	16" WRAPPED METAL PIPE
TH-43	ESNG-G	872+15.66	37.29' RT	24.07	4.44	10" COATED METAL PIPE
TH-44	ESNG-G	869+01.52	30.64' RT	22.97	3.63	16" COATED METAL PIPE
TH-45	ESNG-G	869+02.19	37.91' RT	23.19	4.57	16" COATED METAL PIPE

DRAFT  
NOT FOR BIDDING  
AUGUST 2015

P:\31653-000\Contract\1b\ceadh\CP007130\_L\_1B.dgn 7/30/2015 11:55:19 AM



ADDENDUMS / REVISIONS	

NOT TO SCALE

US 301 &  
SR 1 INTERCHANGE

CONTRACT	BRIDGE NO.
T200911302	
COUNTY	DESIGNED BY: K.A.H.
NEW CASTLE	CHECKED BY: B.R.T.

CONSTRUCTION PLAN

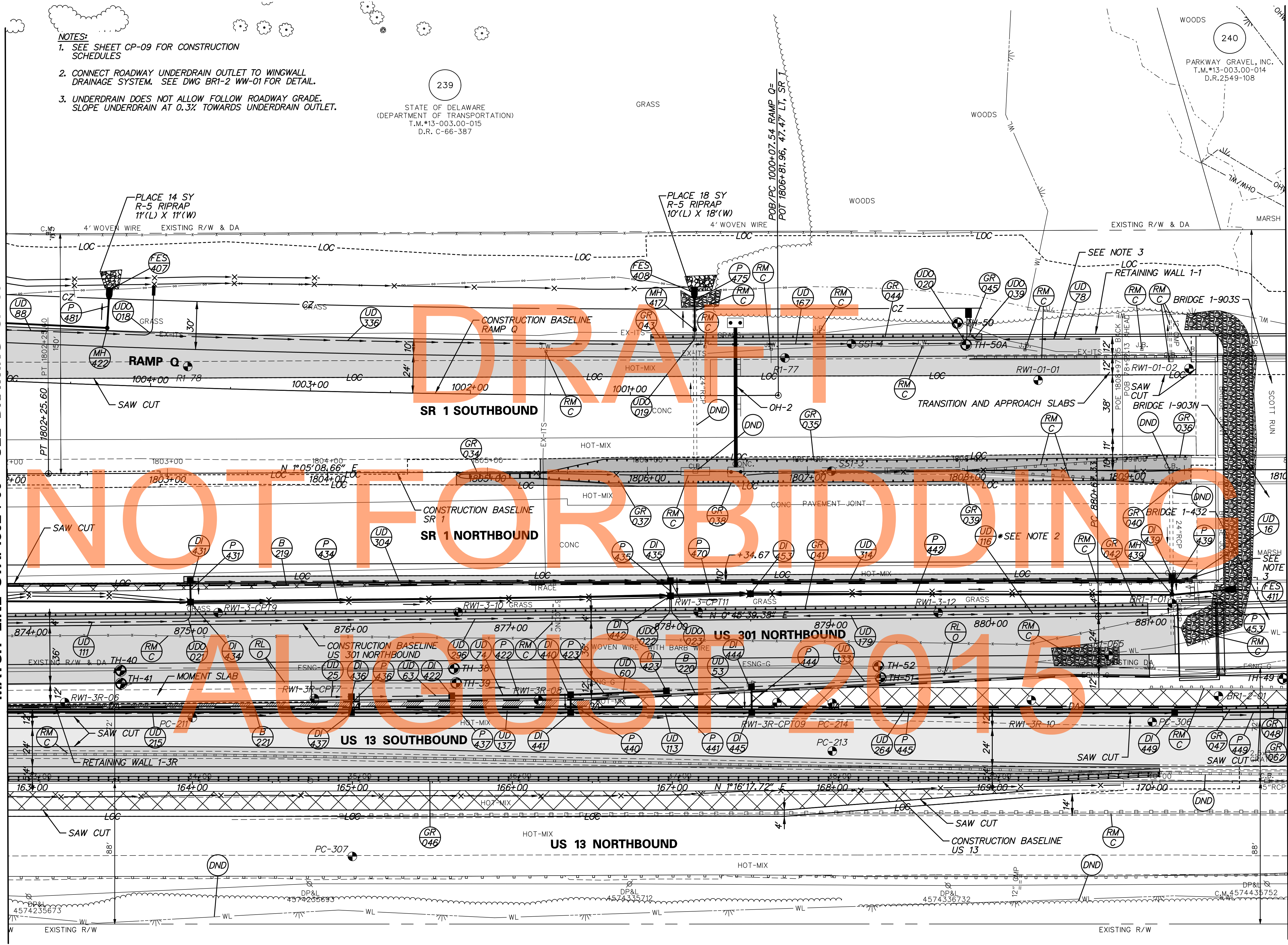
CP-07
SHEET NO.
42
TOTAL SHTS.
491

- NOTES:**
- SEE SHEET CP-09 FOR CONSTRUCTION SCHEDULES
  - CONNECT ROADWAY UNDERDRAIN OUTLET TO WINGWALL DRAINAGE SYSTEM. SEE DWG BR1-2 WW-01 FOR DETAIL.
  - UNDERDRAIN DOES NOT ALLOW FOLLOW ROADWAY GRADE. SLOPE UNDERDRAIN AT 0.3% TOWARDS UNDERDRAIN OUTLET.

STATE OF DELAWARE  
DEPARTMENT OF TRANSPORTATION  
T.M.#13-003.00-015  
D.R. C-66-387

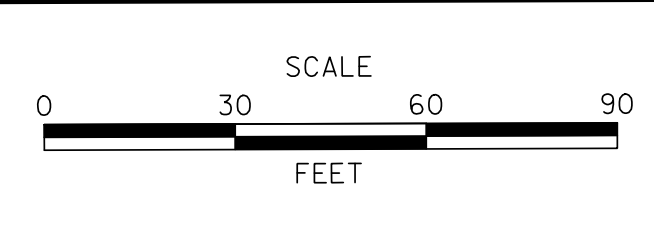
MATCH LINE STA. 1802+00 - SEE DRAWING CP-06

MATCH LINE STA. 1810+00 - SEE DRAWING CP-10



NA 1955-0000 CONTRACT 18-CADD-CP06B1301-18.dgn  
2/17/2015 10:31:18 AM

ADDENDUMS / REVISIONS	



**US 301 & SR 1 INTERCHANGE**

CONTRACT	T200911302
COUNTY	NEW CASTLE
BRIDGE NO.	BR1-903N, BR1-903S, BR1-432, RW1-1 & RW1-3R
DESIGNED BY:	J.A.D.
CHECKED BY:	B.R.T.

<b>CONSTRUCTION PLAN</b>	
SHEET NO.	43
TOTAL SHEETS	491



DRAINAGE INLET SCHEDULE						
NO.	STATION	OFFSET	BOX SIZE	GRATE	T.G. EL.	INV. EL.
422	876+62.77	48.00	** 34"x24"	2	23.00	17.90
423	877+96.93	46.12	** 34"x24"	2	23.00	17.90
431	874+99.93	-25.56	** 34"x24"	2	24.00	20.00
434	875+00.00	-14.01	48"x30"	2	23.18	19.68
435	878+00.02	-23.86	** 34"x24"	2	21.49	17.42
436	876+00.00	48.00	** 34"x24"	2	23.40	17.02
437	164+99.46	-45.00	** 48"x30"	1	21.13	15.39
*439	881+13.66	-21.95	** 72"x48"	2	19.65	13.93
440	877+37.01	48.00	** 34"x24"	2	22.80	15.59
441	166+36.49	-45.00	** 48"x30"	1	19.08	13.53
442	878+00.02	-15.28	48"x30"	2	20.65	17.15
444	878+50.16	43.99	** 34"x24"	2	23.21	13.17
445	167+49.65	-45.00	** 48"x30"	1	16.61	11.15
449	170+13.97	-44.99	** 48"x30"	1	12.45	7.05
453	878+50.00	-16.14	34"x24"	2	20.36	16.47

\* DRAINAGE INLET SHALL BE CAST IN PLACE TO CONNECT TO EXISTING PIPE AS SHOWN AND SHALL BE IN ACCORDANCE WITH STANDARD D-5  
 \*\*USE MODIFIED TOP SLAB AND UNIT, SEE DT-09 - DT-12

MANHOLE SCHEDULE					
NO.	STATION	OFFSET	SIZE	GRATE	T.G. EL.
*417	1000+59.77	41.14	48" X48"	20.72	11.40
422	1004+28.39	35.63	48" X48"	23.17	16.13
*439	881+13.68	-13.30	48" X48"	21.68	13.64

\* MANHOLE SHALL BE CAST IN PLACE TO CONNECT TO EXISTING PIPE AS SHOWN AND SHALL BE IN ACCORDANCE WITH STANDARD D-5

FLARED END SECTION SCHEDULE			
NO.	SIZE / TYPE	SLOPE	SAFETY GRATE
407	24" RCP	0.0100	NO
408	24" RCP	0.0030	NO
411	24" RCP	0.0575	NO

GUARDRAIL SCHEDULE				
NO.	ITEM DESCRIPTION / TYPE	BEGIN STA.	OFFSET	LENGTH
034	END TREATMENT ATTENUATOR, TYPE 3-31	1804+83.02	2.38	50.00
035*	GALVANIZED STEEL BEAM GUARDRAIL, TYPE 1-31	1805+33.02	0.88	396.55
036	GUARDRAIL TO BARRIER CONN., EXIT TYPE 27	1809+28.56	-9.36	11.50
037	GALVANIZED STEEL BEAM GUARDRAIL, TYPE 1-31	1805+33.02	3.88	92.38
038	GALVANIZED STEEL BEAM GUARDRAIL, TYPE 2-31	1806+25.28	7.10	60.00
039*	GALVANIZED STEEL BEAM GUARDRAIL, TYPE 1-31	1806+85.28	6.94	235.06
040	GUARDRAIL TO BARRIER CONN., APPROACH TYPE 1-27	1809+20.26	8.53	19.75
041	GALVANIZED STEEL BEAM GUARDRAIL, TYPE 1-31	873+85.27	-6.00	693.18
042	GUARDRAIL TO BARRIER CONN., APPROACH TYPE 1-31	1880+78.47	-6.16	19.75
043	END ANCHORAGE, TYPE 31	1806+04.01	-83.64	12.50
044	GALVANIZED STEEL BEAM GUARDRAIL, TYPE 1-31	1806+16.51	-83.57	181.25
045	GUARDRAIL TO BARRIER CONN., EXIT TYPE 31	1807+97.76	-83.57	11.50
046	GALVANIZED STEEL BEAM GUARDRAIL, TYPE 3-31	162+84.58	-3.00	720.09
047	GUARDRAIL TO BARRIER CONN., APPROACH TYPE 1-31	170+43.88	-45.00	19.75
048	GALVANIZED STEEL BEAM GUARDRAIL, TYPE 1-31	170+64.05	-45.27	20.40
062	GUARDRAIL OVER CULVERTS, TYPE 3-31	170+82.80	-45.53	1.79

\* INCLUDES GUARDRAIL TYPE 1-27 TO TYPE 1-31 TRANSITION SECTION PER STANDARD DETAIL B-7 TO BE MEASURED FOR PAYMENT UNDER ITEM 720050 GALVANIZED STEEL BEAM GUARDRAIL TYPE 1-31.

UNDERDRAIN OUTLETS		
NO.	LENGTH	DIS. EL.
018	31.26	15.51
019	9.64	18.96
020	22.32	18.03
021	11.83	21.67
022	13.11	19.14
023	13.10	19.14
039	19.81	18.03

DRAINAGE PIPE SCHEDULE						
NO.	SIZE / TYPE	CLASS	LENGTH	SLOPE	INV. EL.	DIS. EL.
422	18" RCP	IV	72	0.0100	17.90	17.19
423	18" RCP	IV	58	0.0124	17.90	17.19
431	18" RCP	IV	10	0.0121	20.00	19.88
434	18" RCP	IV	298	0.0078	19.68	17.35
435	18" RCP	IV	7	0.0113	17.42	17.35
436	15" RCP	IV	6	0.0100	17.02	16.96
437	18" RCP	IV	134	0.0125	15.39	13.73
439	24" RCP	IV	7	0.0100	13.93	13.86
440	18" RCP	IV	7	0.0081	15.59	15.53
441	18" RCP	IV	110	0.0200	13.53	11.35
442	18" RCP	IV	261	0.0100	16.47	13.86
444	18" RCP	IV	13	0.0044	13.17	13.12
445	18" RCP	IV	261	0.0150	11.15	7.25
*449	18" RCP	IV	95	0.0539	7.05	1.93
453	24" RCP	IV	23	0.0575	13.64	12.34
470	18" RCP	IV	48	0.0100	17.15	16.67
475	24" RCP	IV	19	0.0030	11.40	11.35
481	24" RCP	IV	18	0.0100	16.13	15.93

\* FOR CONNECTION TO CULVERT, SEE DT-18

ROADWAY CORE SCHEDULE				
NO.	STATION	OFFSET	DESCRIPTION	
PC-211	164+00.00	39.77' LT.	16" HMA	BROKEN UP PCC
PC-213	168+00.00	18.85' LT.	15.75" HMA	
PC-214	168+00.00	48.71' LT.	17.75" HMA	

BARRIER SCHEDULE				
NO.	ITEM DESCRIPTION / TYPE	BEGIN STA.	OFFSET	LENGTH
219	CONCRETE SINGLE FACE BARRIER, TYPE 2	1802+00.00	69.00	740.56
220	CONCRETE SINGLE FACE BARRIER, TYPE 1	875+75.00	48.00	524.25
*221	CONCRETE SINGLE FACE BARRIER, TYPE 2	162+84.44	-45.00	759.48

\* PCC SIDEWALK TO BE PLACED BETWEEN BACK OF BARRIER AND FACE OF RETAINING WALL 1-3R. SEE TS-17 FOR MATERIALS, DEPTHS, AND LIMITS.

UTILITY TEST HOLE SCHEDULE						
NO.	UTILITY	STATION	OFFSET	GRND EL.	COVER	O.D. & MATERIAL
TH-38	ESNG-G	876+64.31	28.97' RT	18.28	3.69	16" COATED METAL PIPE
TH-39	ESNG-G	876+65.55	38.05' RT	19.29	3.11	10" COATED METAL PIPE
TH-40	ESNG-G	874+55.98	28.40' RT	20.67	3.45	16" COATED METAL PIPE
TH-41	ESNG-G	874+56.17	36.55' RT	21.69	3.14	10" COATED METAL PIPE
TH-49	ESNG-G	881+81.81	40.72' RT	10.99	10.93	10" COATED METAL PIPE
TH-50	EX-ITS	1807+94.12	92.25' LT	15.19	-0.06	4" BLACK PLASTIC CONDUIT
TH-50A	EX-ITS	1807+99.39	78.71' LT	18.75	1.79	3" METAL PIPE
TH-51	ESNG-G	879+30.97	37.18' RT	14.03	2.67	10" COATED METAL PIPE
TH-52	ESNG-G	879+29.48	29.90' RT	13.10	6.80	16" COATED METAL PIPE

DRAFT FOR BIDDING AUGUST 2015

M:\1653-000\CONTRACT 18\CAD\CAD\CP090130\_1B.dgn 2/17/2015 10:40:46 AM



ADDENDUMS / REVISIONS	

NOT TO SCALE

US 301 &  
SR 1 INTERCHANGE

CONTRACT T200911302	BRIDGE NO.	DESIGNED BY: K.A.H.
COUNTY NEW CASTLE	CHECKED BY: B.R.T.	

CONSTRUCTION PLAN

CP-09
SHEET NO. 44
TOTAL SHTS. 491

MATCH LINE STA. 1810+00 - SEE DRAWING CP-08

GUARDRAIL SCHEDULE				
NO.	ITEM DESCRIPTION / TYPE	BEGIN STA.	OFFSET	LENGTH
049	GUARDRAIL TO BARRIER CONN., APPROACH TYPE 1-31	1817+79.55	-83.56	19.75
050	GUARDRAIL TO BARRIER CONN., EXIT TYPE 31	882+97.23	36.77	11.50
051	GALVANIZED STEEL BEAM GUARDRAIL, TYPE 1-31	883+08.69	36.90	462.50
052	END ANCHORAGE, TYPE 31	887+70.25	36.18	12.50
053	GUARDRAIL TO BARRIER CONN., EXIT TYPE 31	1811+02.88	68.84	11.50
054*	GALVANIZED STEEL BEAM GUARDRAIL, TYPE 1-31	1811+14.38	68.84	112.50
055	END ANCHORAGE, TYPE 31	1812+26.66	62.31	12.50
056	GUARDRAIL TO BARRIER CONN., EXIT TYPE 31	882+97.72	-6.02	11.50
057	GALVANIZED STEEL BEAM GUARDRAIL, TYPE 1-31	883+09.22	-5.88	100.00
058	END ANCHORAGE, TYPE 31	884+09.29	-6.00	12.50
059	GUARDRAIL TO BARRIER CONN., APPROACH TYPE 1-31	172+45.15	-45.95	19.75
060	GALVANIZED STEEL BEAM GUARDRAIL, TYPE 1-31	172+64.90	-45.95	225.00
061	GUARDRAIL END TREATMENT ATTENUATOR, TYPE 1-31	174+89.59	-55.40	50.00
063	GUARDRAIL TO BARRIER CONN., EXIT TYPE 31	171+70.29	-45.98	11.50
082	GUARDRAIL OVER CULVERT, TYPE 3-31	170+84.42	-45.55	73.21
083	GALVANIZED STEEL BEAM GUARDRAIL, TYPE 1-31	171+57.80	-45.94	12.5

\*INCLUDES GUARDRAIL TYPE 1-27 TO TYPE 1-31 TRANSITION SECTION PER STANDARD DETAIL B-7 TO BE MEASURED FOR PAYMENT UNDER ITEM 720050 GALVANIZED STEEL BEAM GUARDRAIL TYPE 1-31.

BARRIER SCHEDULE				
NO.	ITEM DESCRIPTION / TYPE	BEGIN STA.	OFFSET	LENGTH
222	CONCRETE SINGLE FACE BARRIER, TYPE 2	171+81.79	-46.00	63.36
223	CONCRETE SINGLE FACE BARRIER, TYPE 1	1811+02.60	-83.58	61.85
*224	CONCRETE SINGLE FACE BARRIER, TYPE 1	1811+64.44	-83.75	285.56
*225	BIFURCATED CONC MEDIAN BARRIER (MOD.)	1814+50.00	-83.75	329.55

\*SLOTTED DRAIN THROUGH BARRIER, SEE DT-05.

ROADWAY CORE SCHEDULE				
NO.	STATION	OFFSET	DESCRIPTION	
PC-218	174+50.00	27.95' LT.	15" HMA, 8" PCC	
PC-219	174+50.00	41.91' LT.	13.25" HMA, 8.25" PCC	

FLARED END SECTION SCHEDULE				
NO.	SIZE / TYPE	SLOPE	SAFETY GRATE	
409	18" RCP	0.0200	NO	

DRAINAGE PIPE SCHEDULE						
NO.	SIZE / TYPE	CLASS	LENGTH	SLOPE	INV. EL.	DIS. EL.
401	18" RCP	IV	92	0.0403	13.52	9.84
407	24" RCP	IV	215	0.0044	4.51	3.57
411	24" RCP	IV	30	0.0030	4.80	4.71
420	24" RCP	IV	26	0.0639	6.68	5.03
*429	24" RCP	IV	113	0.0049	3.35	2.80
478	18" RCP	IV	19	0.0200	12.11	11.73

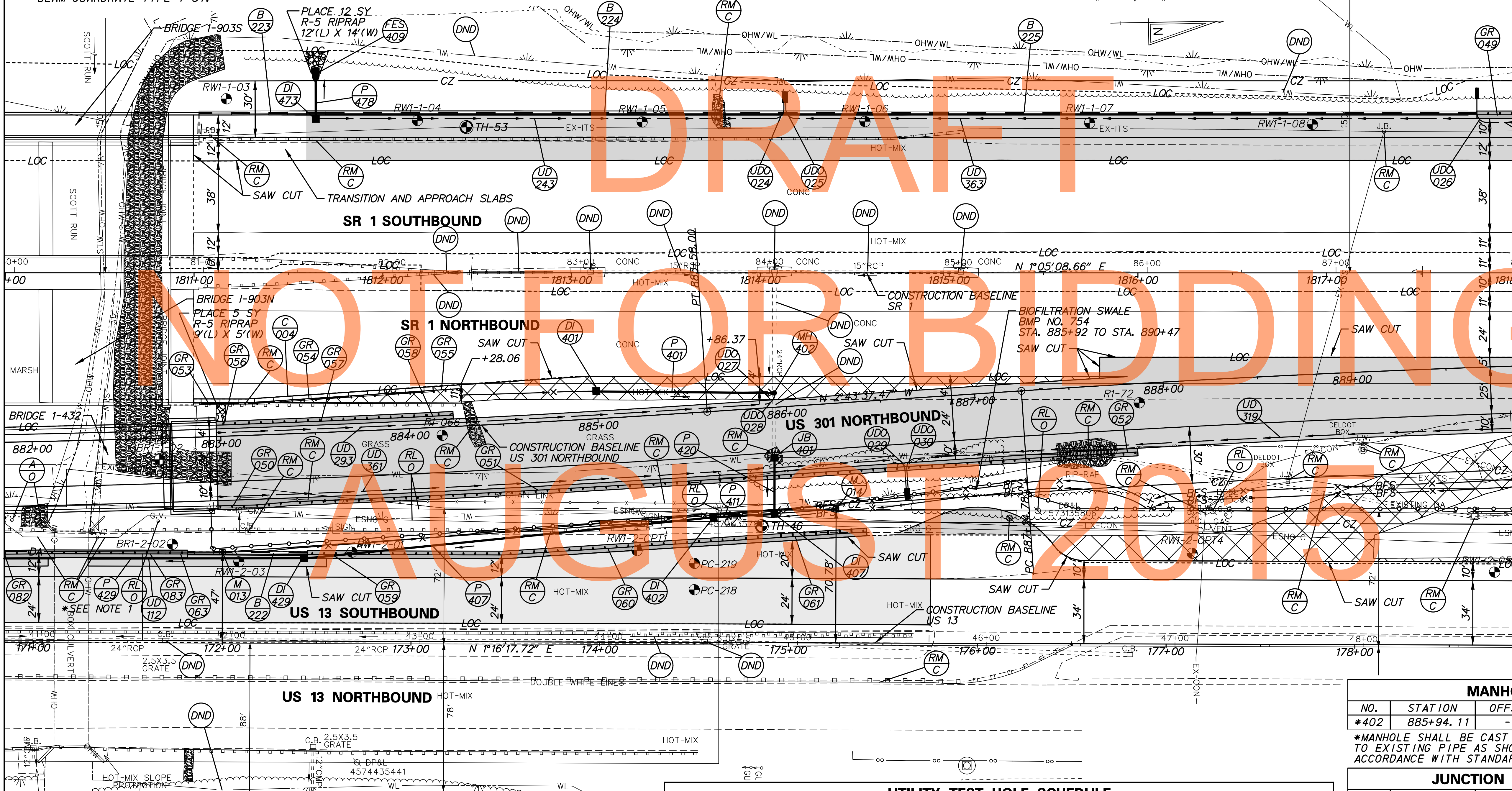
\* FOR CONNECTION TO CULVERT, SEE DT-18

DRAINAGE INLET SCHEDULE						
NO.	STATION	OFFSET	BOX SIZE	GRATE	T.G. EL.	INV. EL.
401	885+00.00	-14.63	2 - 72"x24"	2	16.83	13.52
402	174+60.00	-67.30	34"x18"	2	10.30	4.51
407	885+89.98	56.34	48"x48"	2	10.08	4.80
429	172+43.24	-45.99	*48"x48"	1	11.61	3.35
473	1811+64.44	-83.75	*34"x24"	2	17.83	12.11

\*USE MODIFIED TOP SLAB AND UNIT, SEE DT-09 - DT-12

UNDERDRAIN OUTLETS		
NO.	LENGTH	DIS. EL.
024	14.60	12.75
025	14.60	12.75
026	18.66	14.19
*027	2.73	14.56
028	6.80	14.87
029	21.78	11.19
030	21.78	11.19

\*OUTFALL EXISTING UNDERDRAIN TO MANHOLE. EXISTING UNDERDRAIN TO REMAIN FROM STA. 1811+00 TO STA. 814+04.



MATCH LINE STA. 1818+00 - SEE DRAWING CP-11

NOTES:  
1. SEE SHEET DT-13 FOR EXISTING GAS LINE REMOVAL DETAILS

CURB AND GUTTER SCHEDULE		
NO.	ITEM DESCRIPTION / TYPE	LENGTH
004	PCC CURB AND GUTTER, TYPE 1-4	126.84

UTILITY TEST HOLE SCHEDULE						
NO.	UTILITY	STATION	OFFSET	GRND EL.	COVER	O. D. & MATERIAL
TH-46	ESNG-G	174+85.63	61.74' LT	11.67	0.64	10" COATED METAL PIPE W/ CONCRETE COVER
TH-53	EX-ITS	1812+44.28	77.17' LT	16.78	1.51	4" BLACK PLASTIC CONDUIT

MANHOLE SCHEDULE					
NO.	STATION	OFFSET	SIZE	T.G. EL.	INV. EL.
*402	885+94.11	-7.58	48"x48"	17.43	9.64

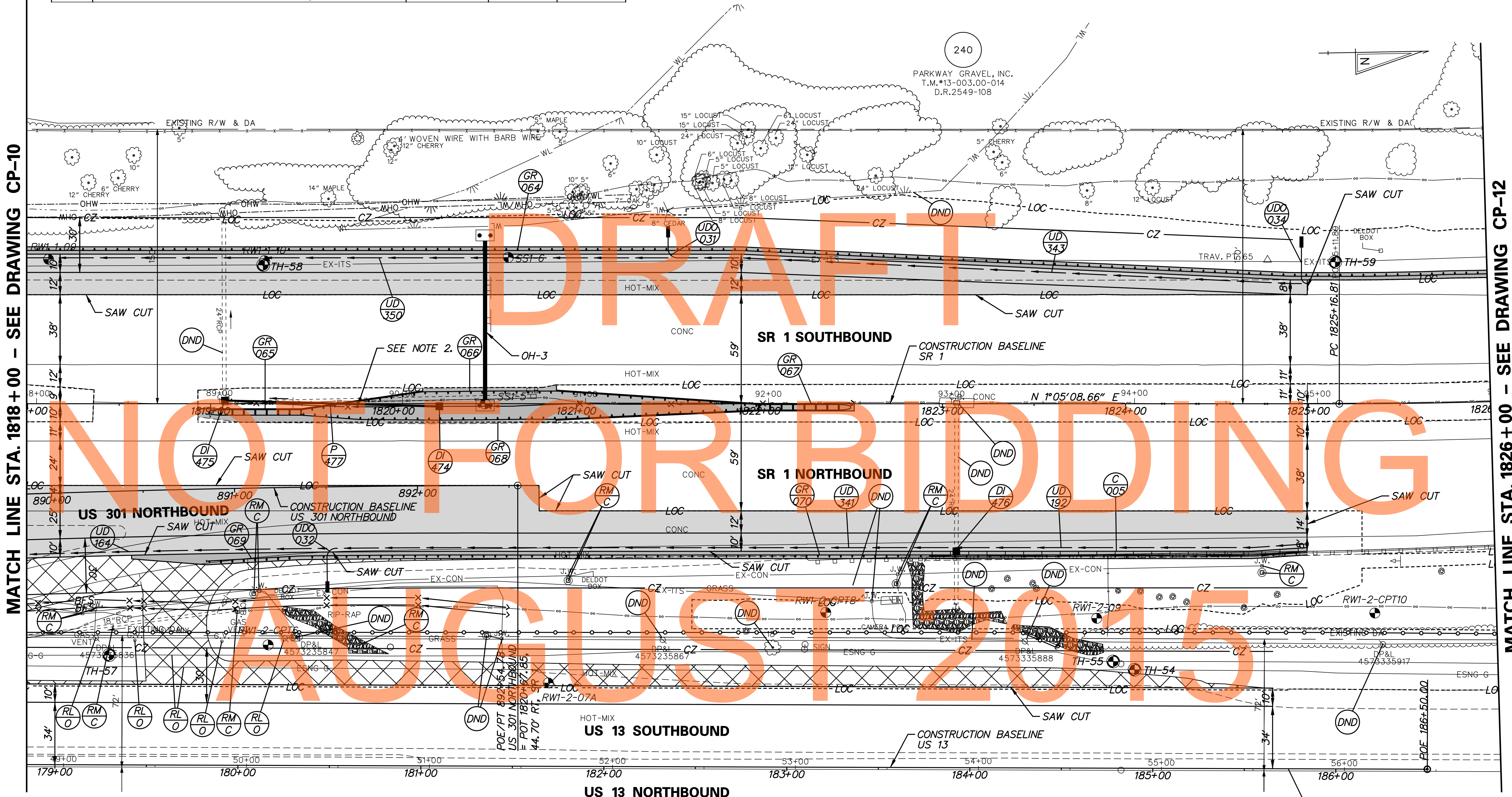
\*MANHOLE SHALL BE CAST IN PLACE TO CONNECT TO EXISTING PIPE AS SHOWN AND SHALL BE IN ACCORDANCE WITH STANDARD D-5

JUNCTION BOX SCHEDULE				
NO.	STATION	OFFSET	T.C. EL.	INV. EL.
401*	885+91.98	26.60	17.76	6.68

\*JUNCTION BOX SHALL BE CAST-IN-PLACE TO CONNECT TO EXISTING STORM DRAIN AND SHALL BE IN ACCORDANCE WITH STANDARD D-5

GUARDRAIL SCHEDULE				
NO.	ITEM DESCRIPTION / TYPE	BEGIN STA.	OFFSET	LENGTH
064	GALVANIZED STEEL BEAM GUARDRAIL, TYPE 1-31	1818+00.00	-83.57	798.93
065	END TREATMENT ATTENUATOR, TYPE 3-31	1818+99.68	4.76	50.00
066	GALVANIZED STEEL BEAM GUARDRAIL, TYPE 1-31	1819+49.68	3.26	250.56
067	END TREATMENT ATTENUATOR, TYPE 3-31	1821+99.28	2.00	50.00
068	GALVANIZED STEEL BEAM GUARDRAIL, TYPE 1-31	1819+49.68	6.26	249.80
069	GUARDRAIL END TREATMENT ATTENUATOR, TYPE 2-31	1818+99.30	86.05	50.00
070	GALVANIZED STEEL BEAM GUARDRAIL, TYPE 1-31	1819+49.30	83.22	550.00

UTILITY TEST HOLE SCHEDULE						
NO.	UTILITY	STATION	OFFSET	GRND EL.	COVER	O. D. & MATERIAL
TH-54	ESNG-G	184+89.84	53.83' LT	31.05	4.72	16" COATED METAL PIPE
TH-55	ESNG-G	184+78.18	58.32' LT	30.92	3.66	10" COATED METAL PIPE W/ CONCRETE COVER
TH-57	ESNG-G	179+29.49	60.00' LT	20.37	3.00	10" COATED METAL PIPE
TH-58	EX-ITS	1819+28.75	75.84' LT	21.95	1.02	3" BLACK PLASTIC CONDUIT
TH-59	EX-ITS	1825+14.61	77.53' LT	37.47	2.45	4" BLACK PLASTIC CONDUIT



MATCH LINE STA. 1818+00 - SEE DRAWING CP-10

MATCH LINE STA. 1826+00 - SEE DRAWING CP-12

DRAINAGE INLET SCHEDULE						
NO.	STATION	OFFSET	BOX SIZE	GRATE	T.G. EL.	INV. EL.
474	1820+25.00	1.44	34" x 24"	2	23.91	20.62
*475	1819+07.76	-1.69	34" x 24"	2	21.97	15.08
*476	1823+07.54	80.65	34" x 24"	2	34.02	25.32

\*DRAINAGE INLET SHALL BE CAST IN PLACE TO CONNECT TO EXISTING PIPE AS SHOWN AND SHALL BE IN ACCORDANCE WITH STANDARD D-5

CURB AND GUTTER SCHEDULE		
NO.	ITEM DESCRIPTION / TYPE	LENGTH
005	PCC CURB AND GUTTER, TYPE 1-4	206.45

DRAINAGE PIPE SCHEDULE						
NO.	SIZE / TYPE	CLASS	LENGTH	SLOPE	INV. EL.	DIS. EL.
477	18" RCP	IV	116	0.0167	20.62	18.69

UNDERDRAIN OUTLETS		
NO.	LENGTH	DIS. EL.
031	17.55	23.53
032	21.40	20.53
034	21.41	34.51

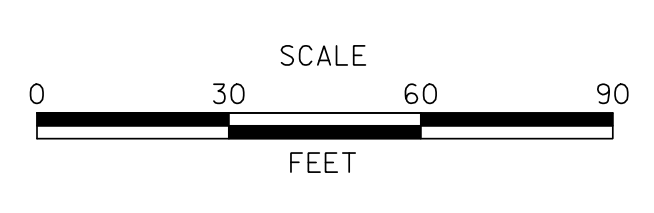
**NOTES:**  
 1. CONTRACTOR SHALL TAKE CARE NOT TO DAMAGE ITEMS CONDUITS INSTALLED IN PHASE 1. CONTRACTOR SHALL TEST PIT AS NECESSARY PRIOR TO ANY WORK IN THIS AREA. CONTRACTOR SHALL SUPPORT AND PROTECT THESE CONDUITS DURING W-BEAM AND STORM DRAIN INSTALLATION.

**LIMIT OF CONSTRUCTION  
 US 13  
 STATION 185+74**

P:\31653-000\gen\contract\lb\cadd\CP01\US01\_1B.dgn 5/20/2015 10:58:00 AM



ADDENDUMS / REVISIONS	



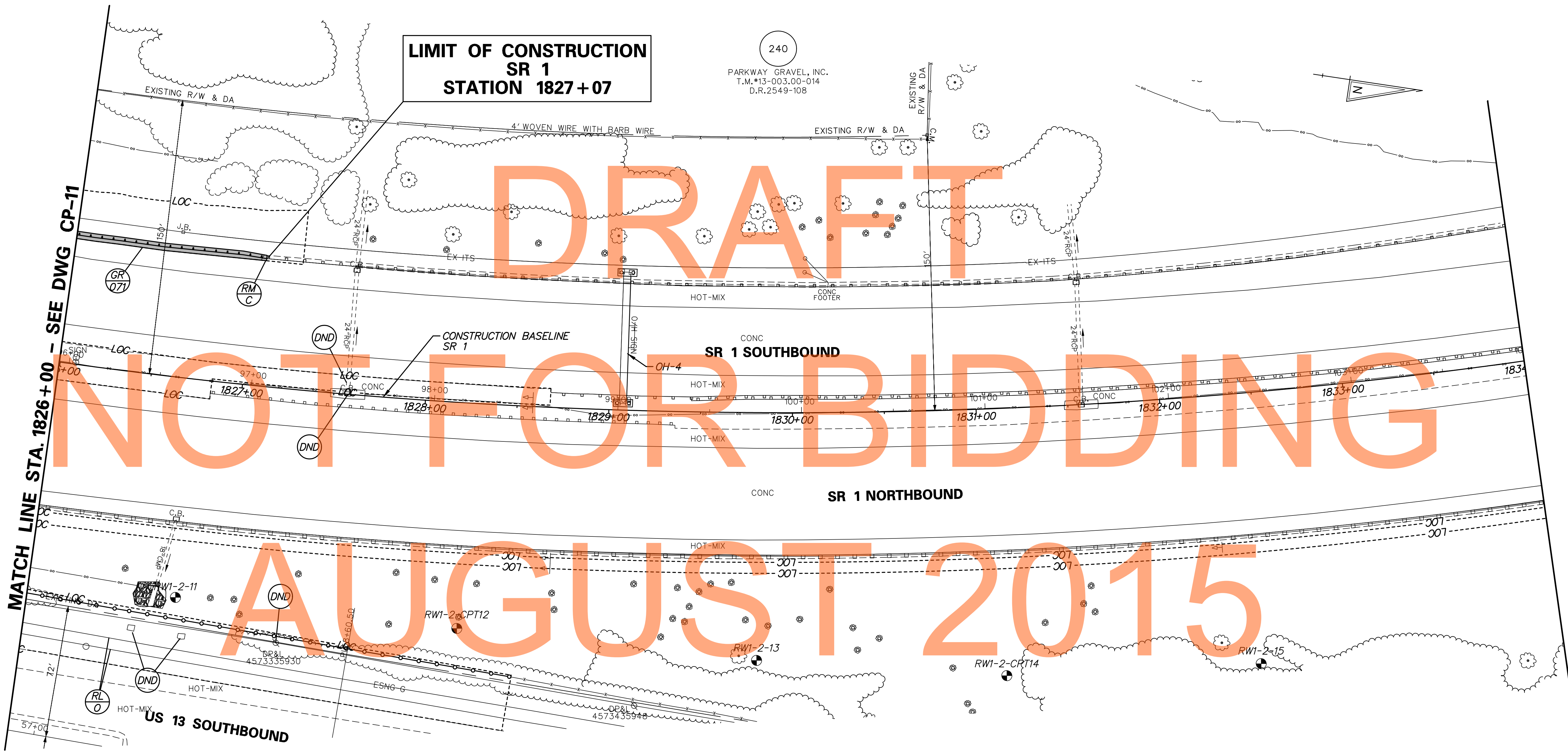
**US 301 &  
 SR 1 INTERCHANGE**

CONTRACT T200911302	BRIDGE NO.
COUNTY NEW CASTLE	DESIGNED BY: J.A.D.
	CHECKED BY: B.R.T.

**CONSTRUCTION PLAN**

CP-11
SHEET NO. 46
TOTAL SHTS. 491

GUARDRAIL SCHEDULE				
NO.	ITEM DESCRIPTION / TYPE	BEGIN STA.	OFFSET	LENGTH
071	GALVANIZED STEEL BEAM GUARDRAIL, TYPE 1-31	1826+00.00	-69.89	104.05

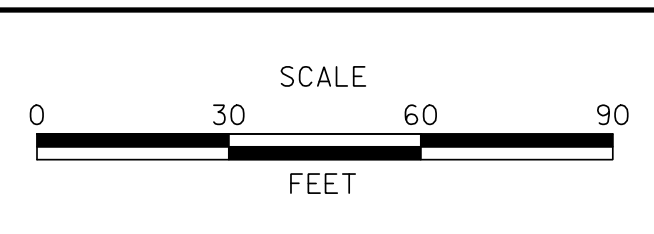


SEE FIELD OFFICE, STOCKPILE, AND STAGING AREA, SEE SHEET GR-02

P:\31653-000\gen\contract\lb\ceadh\CP012130\_LB.dgn  
 5/30/2015 11:58:05 AM



ADDENDUMS / REVISIONS	



**US 301 & SR 1 INTERCHANGE**

CONTRACT T200911302	BRIDGE NO.
COUNTY NEW CASTLE	DESIGNED BY: J.A.D.
	CHECKED BY: B.R.T.

**CONSTRUCTION PLAN**

CP-12
SHEET NO. 47
TOTAL SHTS. 491

UNDERDRAIN OUTLETS		
NO.	LENGTH	DIS. EL.
036	20.98	30.67
037	19.55	29.61
038	40.17	31.86

DRAINAGE INLET SCHEDULE						
NO.	STATION	OFFSET	BOX SIZE	GRATE	T.G. EL.	INV. EL.
408	316+50.05	-49.32	48" x 30"	2	31.11	27.79
479	1784+98.31	0.30	34" x 24"	2	33.95	31.15
583	315+00.58	-33.64	34" x 24"	2	32.16	28.84

DRAINAGE PIPE SCHEDULE						
NO.	SIZE / TYPE	CLASS	LENGTH	SLOPE	INV. EL.	DIS. EL.
408	18" RCP	IV	160	0.0030	27.79	27.31
459	18" RCP	IV	154	0.0468	52.12	44.91
*479	15" RCP	IV	146	0.0029	31.15	30.72
583	18" RCP	IV	148	0.0057	28.84	27.99

GUARDRAIL SCHEDULE				
NO.	ITEM DESCRIPTION / TYPE	BEGIN STA.	OFFSET	LENGTH
072	GUARDRAIL TO BARRIER CONN., APPROACH TYPE 1-31	1784+81.56	14.85	19.75
073	GALVANIZED STEEL BEAM GUARDRAIL, TYPE 1-31	1784+50.31	15.14	31.25
074	GALVANIZED STEEL BEAM GUARDRAIL, TYPE 3-31	1781+56.56	14.33	293.75
075	GUARDRAIL END TREATMENT ATTENUATOR, TYPE 3-31	1781+16.56	14.38	50.00
076	GALVANIZED STEEL BEAM GUARDRAIL, TYPE 1-31	316+00.00	-6.00	159.90
077	GUARDRAIL END TREATMENT ATTENUATOR, TYPE 3-31	146+29.95	-16.00	50.00
078	GALVANIZED STEEL BEAM GUARDRAIL, TYPE 3-31	146+79.95	-15.23	20.03
079	GUARDRAIL TO BARRIER CONN., EXIT TYPE 31	1780+68.09	153.06	11.50
080	GALVANIZED STEEL BEAM GUARDRAIL, TYPE 1-31	1780+79.52	151.76	505.19
081	GUARDRAIL TO BARRIER CONN., APPROACH TYPE 31	1785+81.56	97.89	19.75

NOTES:  
1. TIE-IN PROPOSED UNDERDRAIN WITH EXISTING UNDERDRAIN.

\*PIPE SHALL CONNECT TO EXISTING INLET AS SHOWN

**LIMIT OF CONSTRUCTION  
SR 1  
STATION 1779+90**

**LIMIT OF CONSTRUCTION  
RAMP R  
STATION 316+00**

**LIMIT OF CONSTRUCTION  
US 13  
STATION 144+67**

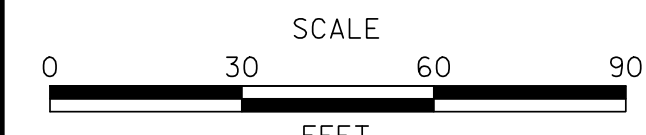
DRAFT

NOT FOR BIDDING

AUGUST 2015

BARRIER SCHEDULE				
NO.	ITEM DESCRIPTION / TYPE	BEGIN STA.	OFFSET	LENGTH
226	BARRIER WALL 11	1784+97.98	-7.26	120.99
227	CONCRETE SINGLE FACE BARRIER, TYPE 1	1786+18.97	-7.20	15.60
228	CONCRETE SINGLE FACE BARRIER, TYPE 1	1785+01.31	14.85	123.26
229	CONCRETE SINGLE FACE BARRIER, TYPE 2	1786+01.29	94.81	17.47
230	CONCRETE SINGLE FACE BARRIER, TYPE 1	316+00.00	24.00	163.84
231	CONCRETE SINGLE FACE BARRIER, TYPE 1	145+90.00	-58.62	47.87
232	CONCRETE SINGLE FACE BARRIER, MODIFIED TYPE 1	146+50.00	-58.78	50.02
233	CONCRETE SINGLE FACE BARRIER, TYPE 1	1779+89.30	160.73	79.17
234	CONCRETE SINGLE FACE BARRIER, TYPE 2	146+37.89	-57.88	12.13

ADDENDUMS / REVISIONS



**US 301 &  
SR 1 INTERCHANGE**

CONTRACT T200911302	BRIDGE NO. RW1-3R
COUNTY NEW CASTLE	DESIGNED BY: J.A.D. CHECKED BY: B.R.T.

**CONSTRUCTION PLAN**

CP-13
SHEET NO. 48
TOTAL SHTS. 491

P:\2009\11302\CP13\01301.LB.dgn 8/20/15 10:58:15 AM