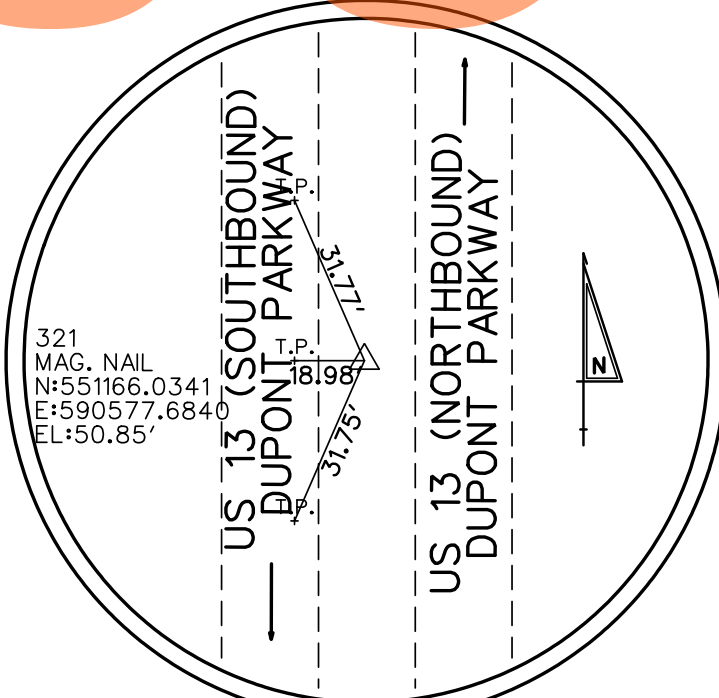
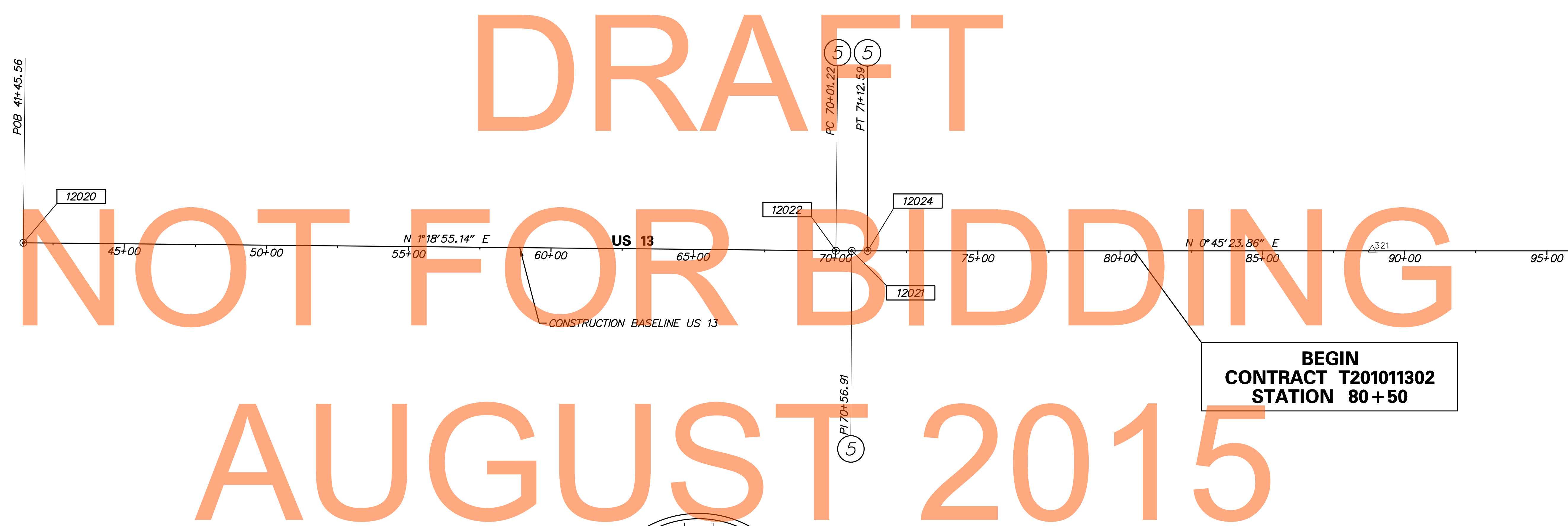
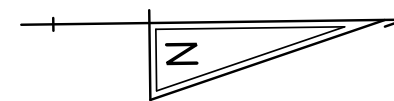


CONSTRUCTION ALIGNMENT CONTROL				
POINT	STATION	OFFSET	NORTHING	EASTING
12020	41+45.56	0.00'	546426.5076	590490.4833
12050	45+00.00	0.00'	546780.8543	590498.6193
12051	50+00.00	0.00'	547280.7225	590510.0966
12052	55+00.00	0.00'	547780.5908	590521.5739
12053	60+00.00	0.00'	548280.4590	590533.0513
12054	65+00.00	0.00'	548780.3273	590544.5286
12055	75+00.00	0.00'	549780.1428	590563.1633
12056	80+00.00	0.00'	550280.0992	590569.7660
12057	85+00.00	0.00'	550780.0556	590576.3686
12058	90+00.00	0.00'	551280.0120	590582.9712
12059	95+00.00	0.00'	551779.9684	590589.5739

CIRCULAR CURVE NO. ⑤ - US 13			
PC ( 12022)	STATION	NORTHING	EASTING
PI ( 12021)	70+01.22	549281.4198	590556.0340
CC ( 12023)	70+56.91	549337.0893	590557.3122
PT ( 12024)	71+12.59	549543.5880	579137.8833
		549392.7686	590558.0475
Radius:	11421.1600		
Design Speed (mph):	65.0000		
Superelevation:	N/A		
Delta:	0° 33' 31.2819" Left		
Degree of Curvature (Arc):	0° 30' 05.9882"		
Length:	111.3674		
Tangent:	55.6841		
Chord:	111.3669		
Middle Ordinate:	0.1357		
External:	0.1357		
Tangent Direction:	N 1° 18' 55.1430" E		
Radial Direction:	S 88° 41' 04.8570" E		
Chord Direction:	N 1° 02' 09.5021" E		
Radial Direction:	S 89° 14' 36.1389" E		
Tangent Direction:	N 0° 45' 23.8611" E		



TRAVERSE POINT #321  
MAG. NAIL

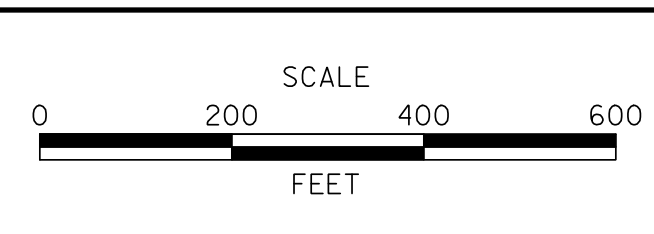
HORIZONTAL / VERTICAL CONTROL DATA					
POINT	STATION	OFFSET	NORTHING	EASTING	ELEVATION
321	88+85.96	3.78' LT	551166.0341	590577.6840	50.85

DATUM REFERENCE:  
 HORIZONTAL - THIS PROJECT IS REFERENCED TO THE DELAWARE STATE PLANE COORDINATE SYSTEM (NAD 83/91).  
 VERTICAL - THIS PROJECT IS REFERENCED TO NAVD 88, BASED ON STATE OF DELAWARE BENCHMARK JU2197 - ELEV. 27.71 FEET.

N:\17205\17205\CONTRACT\ID\CADD\HV0010301\_ID.dgn  
 9/17/2015 9:53:27 AM



ADDENDUMS / REVISIONS



**US 13 & PORT PENN RD INTERSECTION**

CONTRACT	BRIDGE NO.
T201011302	
COUNTY	DESIGNED BY: KAH
NEW CASTLE	CHECKED BY: BRT

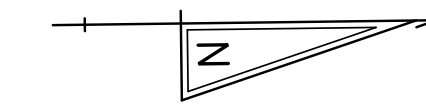
**HORIZONTAL AND VERTICAL CONTROL**

HV-01
SHEET NO.
21
TOTAL SHTS.
179

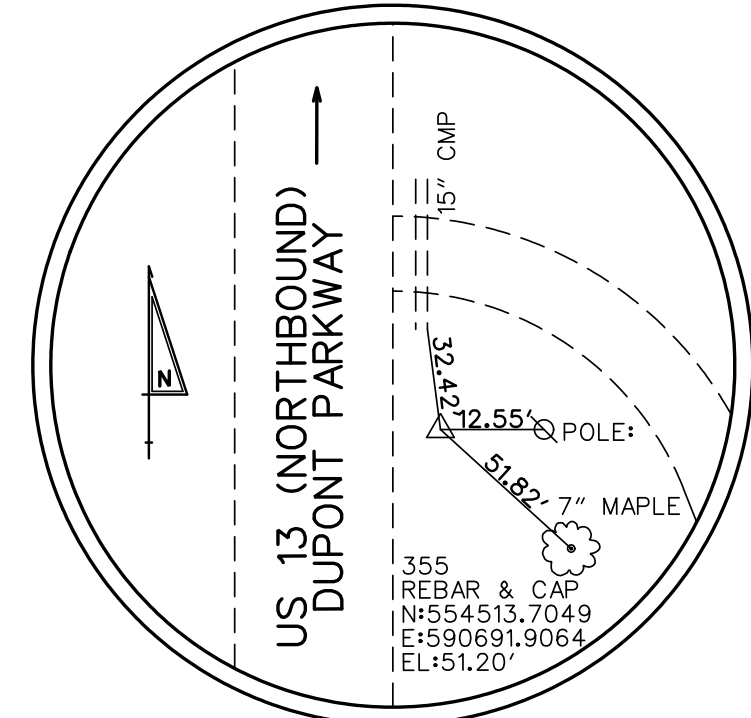
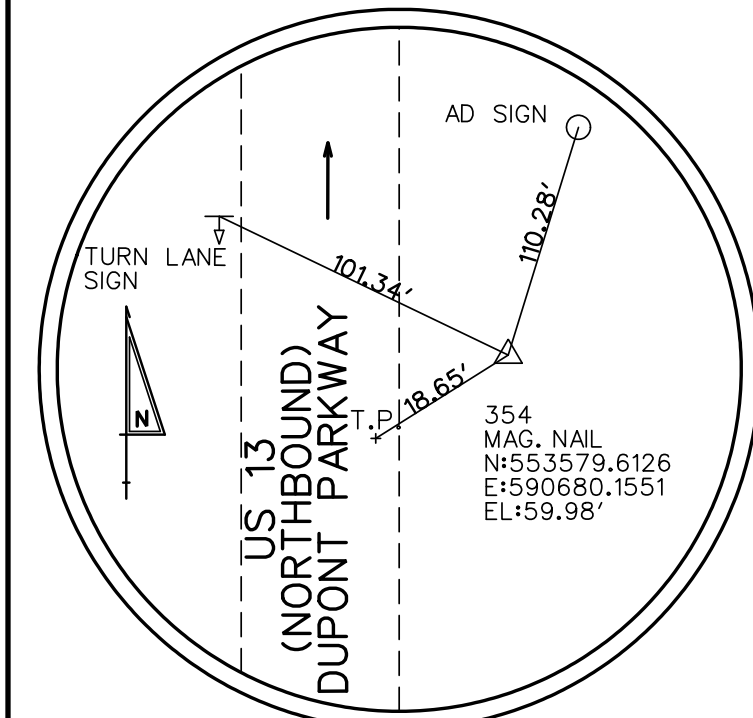
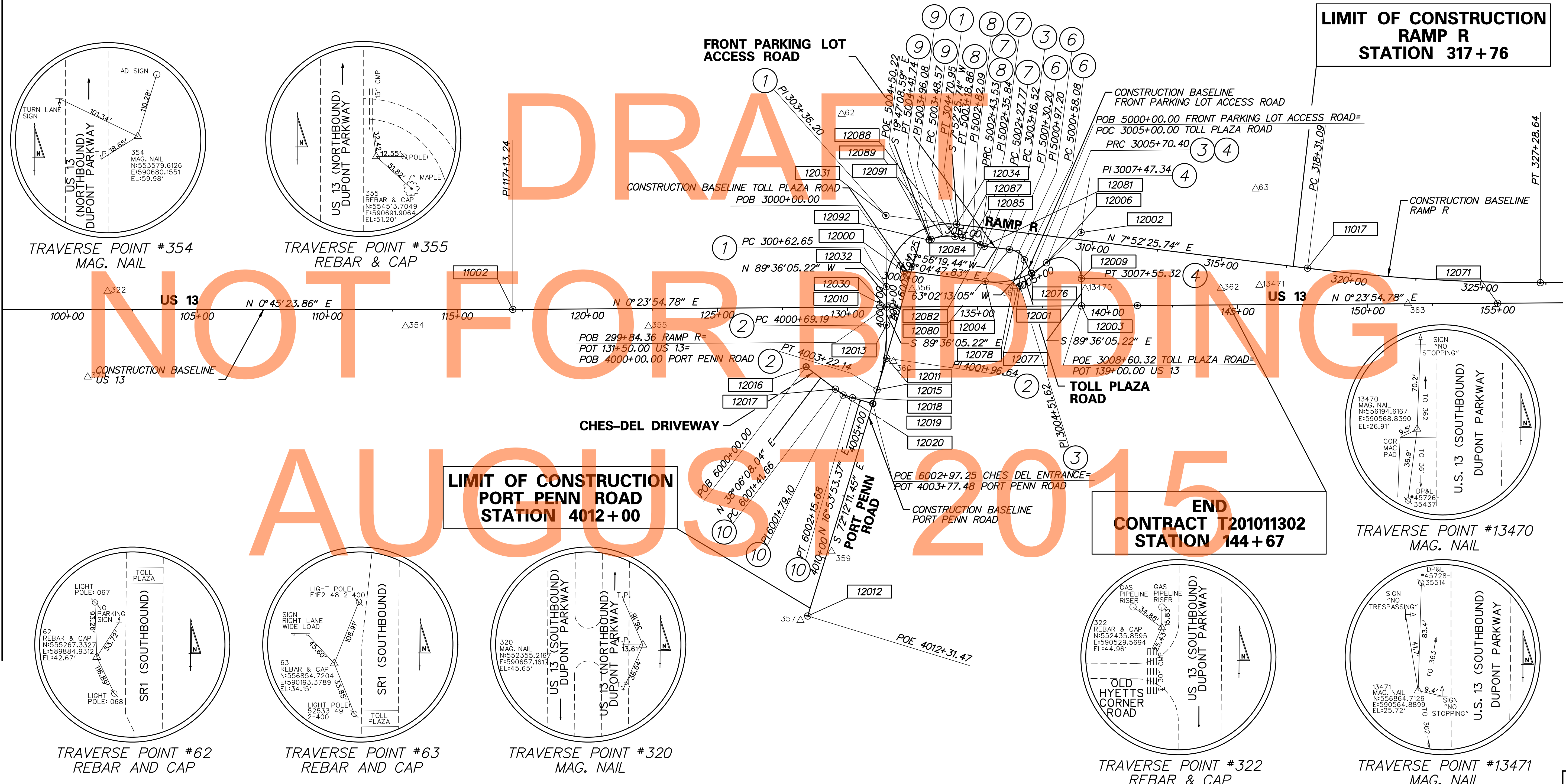
CONSTRUCTION ALIGNMENT CONTROL				
POINT	STATION	OFFSET	NORTHING	EASTING
11002	117+13.24	0.00'	553993.0180	590618.8003
11017	318+31.09	0.00'	557050.4700	590500.7698
12000	3000+00.00	0.00'	555496.9430	590490.8712
12003	3008+60.32	0.00'	556179.7225	590634.0113
12010	4000+00.00	0.00'	555429.7407	590628.7944
12012	4012+31.47	0.00'	555111.4859	591812.6086
12016	6000+00.00	0.00'	555117.6940	590854.3797
12019	6002+97.25	0.00'	555372.5007	590999.4877
12030	299+84.36	0.00'	555429.7407	590628.7944
12060	100+00.00	0.00'	552279.9248	590596.1765
12061	105+00.00	0.00'	552779.8812	590602.7791
12062	110+00.00	0.00'	553279.8376	590609.3818
12063	115+00.00	0.00'	553779.7940	590615.9844

CONSTRUCTION ALIGNMENT CONTROL				
POINT	STATION	OFFSET	NORTHING	EASTING
12064	120+00.00	0.00'	554279.7685	590620.7950
12065	125+00.00	0.00'	554779.7564	590624.2730
12066	130+00.00	0.00'	555279.7443	590627.7510
12067	135+00.00	0.00'	555779.7322	590631.2289
12068	140+00.00	0.00'	556279.7201	590634.7069
12069	145+00.00	0.00'	556779.7080	590638.1849
12070	150+00.00	0.00'	557279.6959	590641.6629
12071	155+00.00	0.00'	557779.6838	590645.1409
12076	5000+00.00	0.00'	555988.5073	590505.7268
12092	5004+50.22	0.00'	555596.9683	590373.4440

HORIZONTAL / VERTICAL CONTROL DATA					
POINT	STATION	OFFSET	NORTHING	EASTING	ELEVATION
62	129+82.42	-742.72'	555267.3327	589884.9312	42.67'
63	145+71.92	-445.32'	556854.7204	590193.3789	34.15'
320	100+78.73	259.97'	552355.2167	590657.1617	45.65'
322	101+55.04	-68.66'	552435.8595	590529.5694	44.96'
354	113+00.68	66.81'	553579.6126	590680.1551	59.98'
355	122+34.43	69.48'	554513.7049	590691.9064	51.20'
356	132+48.96	-67.56'	555529.1717	590561.9288	33.36'
357	128+11.82	1202.62'	555083.2007	591829.0338	47.31'
359	4009+67.91	-14.62'	555206.2078	591566.1988	45.20'
360	4002+03.79	-36.83'	555453.7811	590838.0980	33.28'
361	136+39.60	-77.04'	555919.8710	590555.1580	29.48'
362	144+35.70	-63.23'	556715.8453	590574.5225	26.21'
363	151+54.64	-1.04'	557434.3376	590641.7036	20.43'
13470	139+14.44	-65.27'	556194.6167	590568.8390	26.91'
13471	145+84.49	-73.89'	556864.7126	590564.8899	25.72'

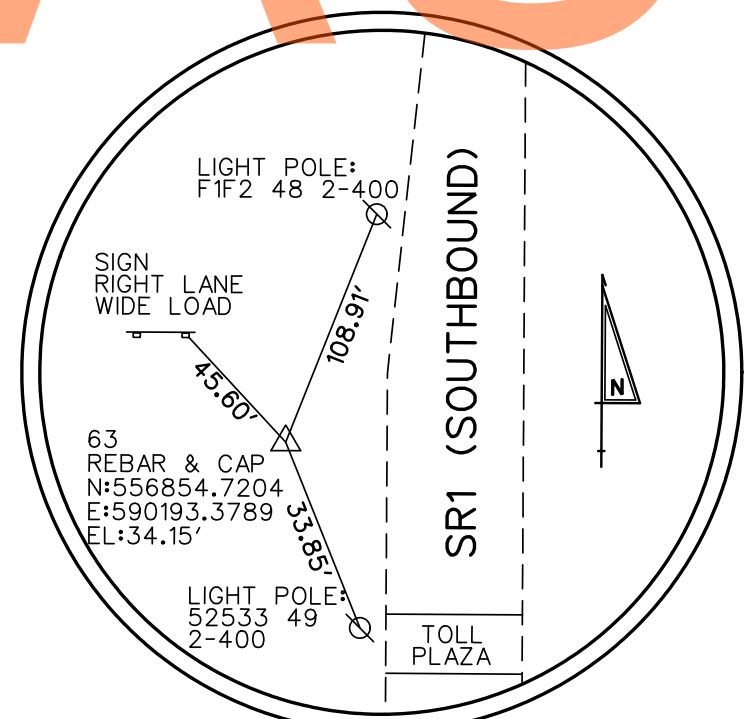
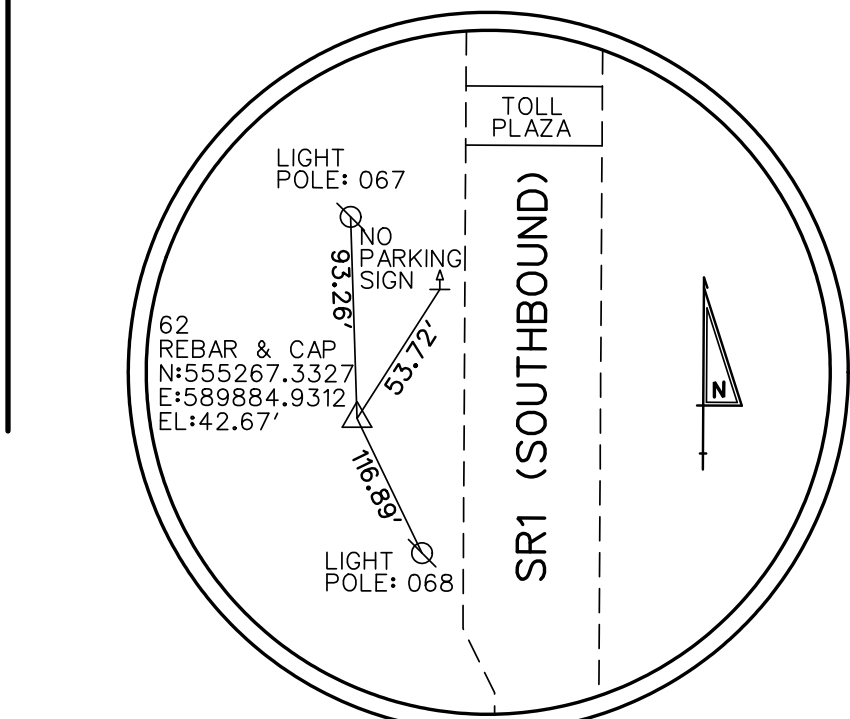


MATCH LINE STA. 97 + 50



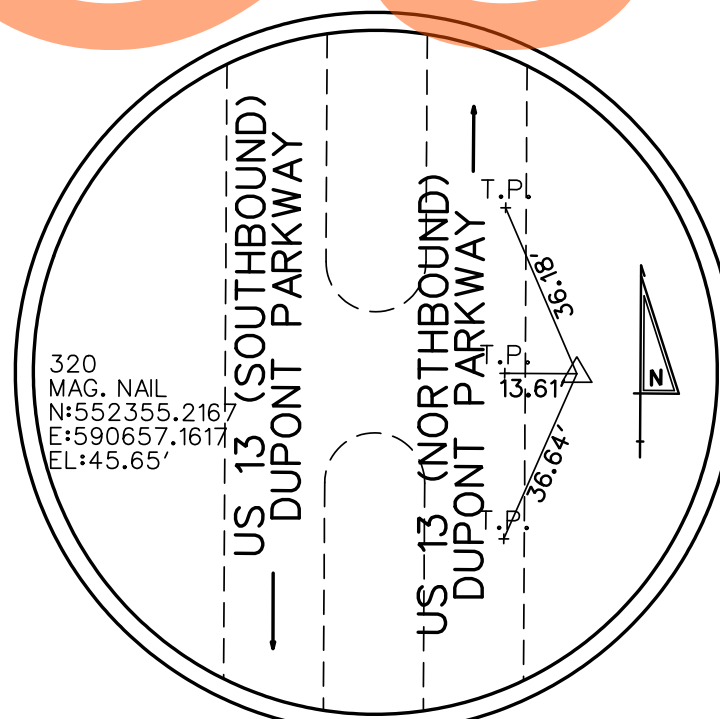
TRAVERSE POINT #354  
MAG. NAIL

TRAVERSE POINT #355  
REBAR & CAP

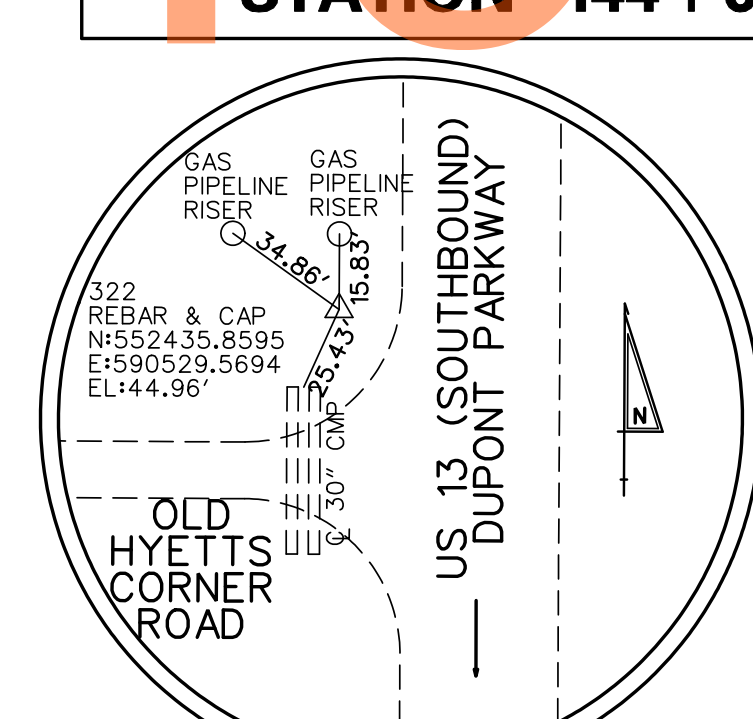


TRAVERSE POINT #62  
REBAR AND CAP

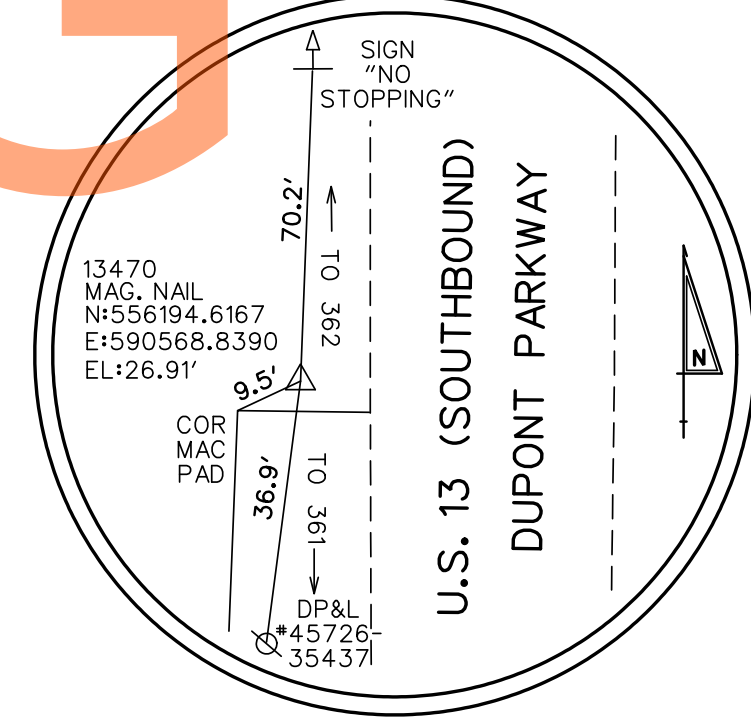
TRAVERSE POINT #63  
REBAR AND CAP



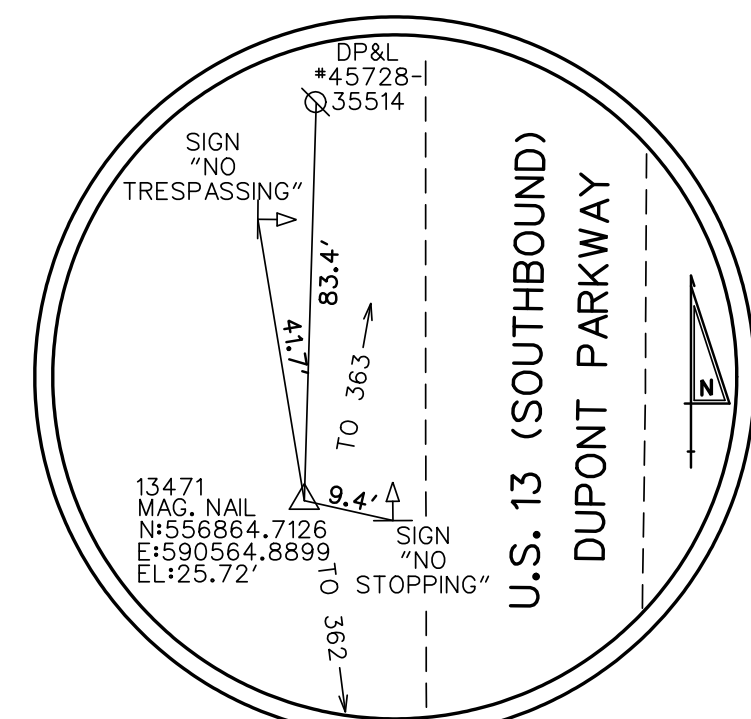
TRAVERSE POINT #320  
MAG. NAIL



TRAVERSE POINT #322  
REBAR & CAP



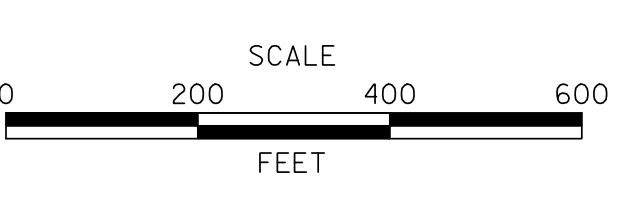
TRAVERSE POINT #13470  
MAG. NAIL



TRAVERSE POINT #13471  
MAG. NAIL

M:\171205\171205\Contract ID\CADD\HV02U301\_ID.dgn

ADDENDUMS / REVISIONS	



CONTRACT	T201011302	BRIDGE NO.	
COUNTY	NEW CASTLE	DESIGNED BY:	KAH
		CHECKED BY:	BRT

CIRCULAR CURVE NO. ① - RAMP R

Table with columns: STATION, NORTHING, EASTING. Rows include PC, PI, CC, PT, Radlus, Design Speed, Superelevation, Degree of Curvature, Length, Tangent, Chord, Middle Ordinate, External, Tangent Direction, Radial Direction, Chord Direction, Radial Direction, Tangent Direction.

CIRCULAR CURVE NO. ② - PORT PENN ROAD

Table with columns: STATION, NORTHING, EASTING. Rows include PC, PI, CC, PT, Radlus, Design Speed, Superelevation, Degree of Curvature, Length, Tangent, Chord, Middle Ordinate, External, Tangent Direction, Radial Direction, Chord Direction, Radial Direction, Tangent Direction.

CIRCULAR CURVE NO. ③ - TOLL PLAZA

Table with columns: STATION, NORTHING, EASTING. Rows include PC, PI, CC, PRC, Radlus, Design Speed, Superelevation, Degree of Curvature, Length, Tangent, Chord, Middle Ordinate, External, Tangent Direction, Radial Direction, Chord Direction, Radial Direction, Tangent Direction.

CIRCULAR CURVE NO. ④ - TOLL PLAZA

Table with columns: STATION, NORTHING, EASTING. Rows include PRC, PI, CC, PT, Radlus, Design Speed, Superelevation, Degree of Curvature, Length, Tangent, Chord, Middle Ordinate, External, Tangent Direction, Radial Direction, Chord Direction, Radial Direction, Tangent Direction.

CIRCULAR CURVE NO. ⑥ - FRONT PARKING LOT ACCESS ROAD

Table with columns: STATION, NORTHING, EASTING. Rows include PC, PI, CC, PT, Radlus, Design Speed, Superelevation, Degree of Curvature, Length, Tangent, Chord, Middle Ordinate, External, Tangent Direction, Radial Direction, Chord Direction, Radial Direction, Tangent Direction.

CIRCULAR CURVE NO. ⑦ - FRONT PARKING LOT ACCESS ROAD

Table with columns: STATION, NORTHING, EASTING. Rows include PC, PI, CC, PRC, Radlus, Design Speed, Superelevation, Degree of Curvature, Length, Tangent, Chord, Middle Ordinate, External, Tangent Direction, Radial Direction, Chord Direction, Radial Direction, Tangent Direction.

CIRCULAR CURVE NO. ⑧ - FRONT PARKING LOT ACCESS ROAD

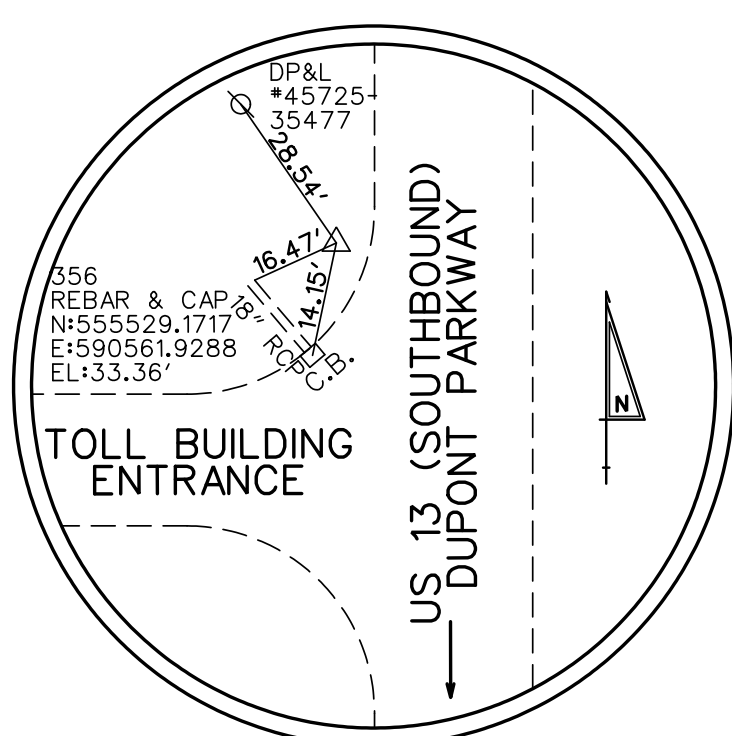
Table with columns: STATION, NORTHING, EASTING. Rows include PC, PI, CC, PT, Radlus, Design Speed, Superelevation, Degree of Curvature, Length, Tangent, Chord, Middle Ordinate, External, Tangent Direction, Radial Direction, Chord Direction, Radial Direction, Tangent Direction.

CIRCULAR CURVE NO. ⑨ - FRONT PARKING LOT ACCESS ROAD

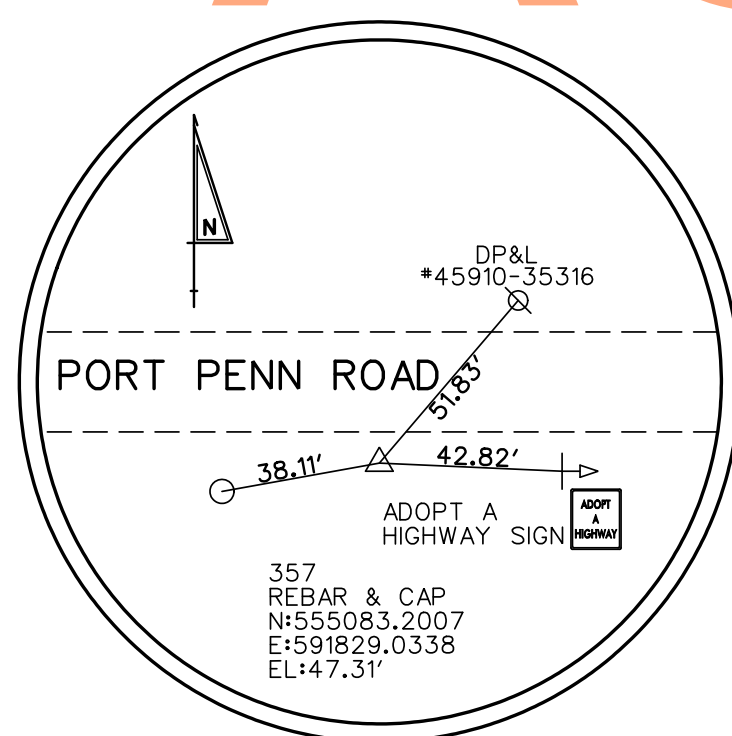
Table with columns: STATION, NORTHING, EASTING. Rows include PC, PI, CC, PT, Radlus, Design Speed, Superelevation, Degree of Curvature, Length, Tangent, Chord, Middle Ordinate, External, Tangent Direction, Radial Direction, Chord Direction, Radial Direction, Tangent Direction.

CIRCULAR CURVE NO. ⑩ - CHES-DEL DRIVEWAY

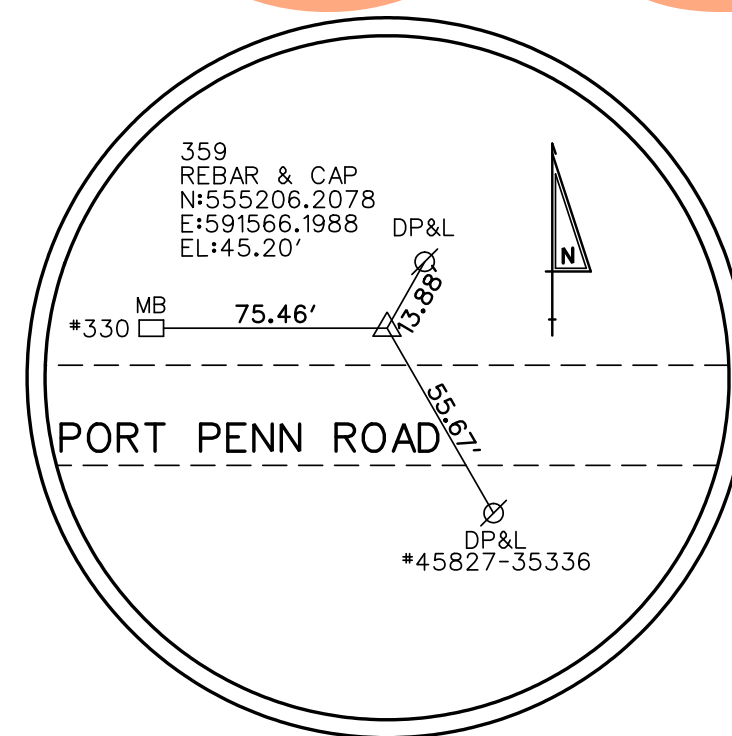
Table with columns: STATION, NORTHING, EASTING. Rows include PC, PI, CC, PT, Radlus, Design Speed, Superelevation, Degree of Curvature, Length, Tangent, Chord, Middle Ordinate, External, Tangent Direction, Radial Direction, Chord Direction, Radial Direction, Tangent Direction.



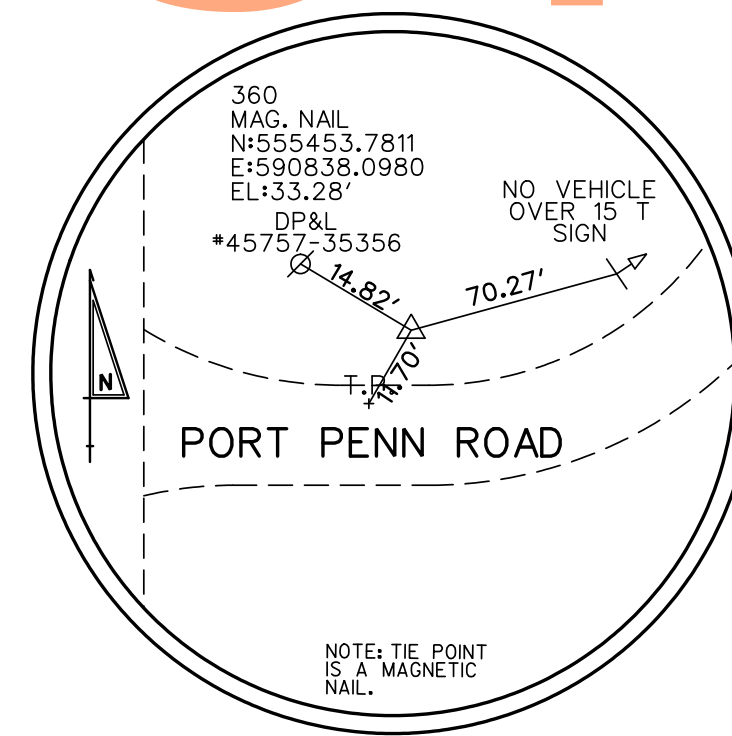
TRAVERSE POINT #356 REBAR & CAP



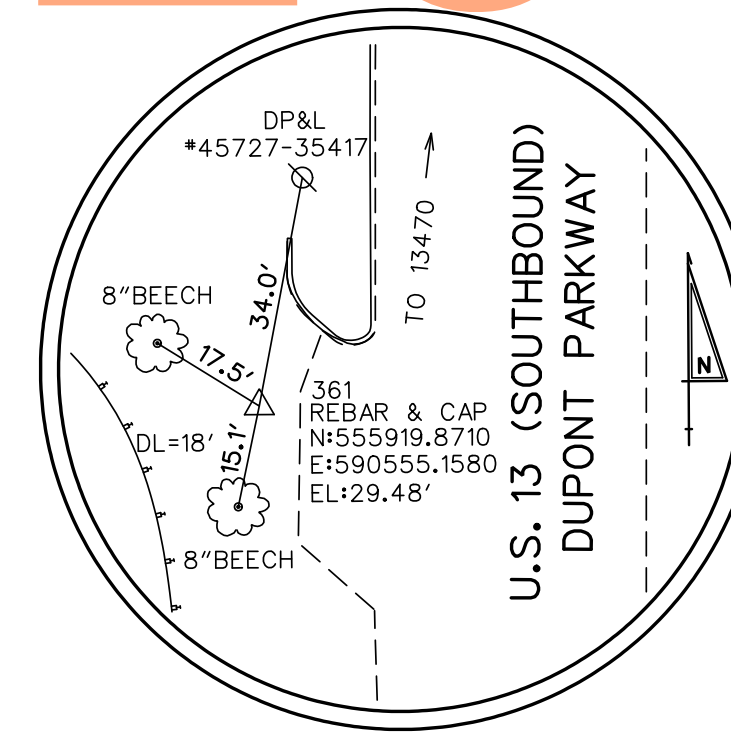
TRAVERSE POINT #357 REBAR & CAP



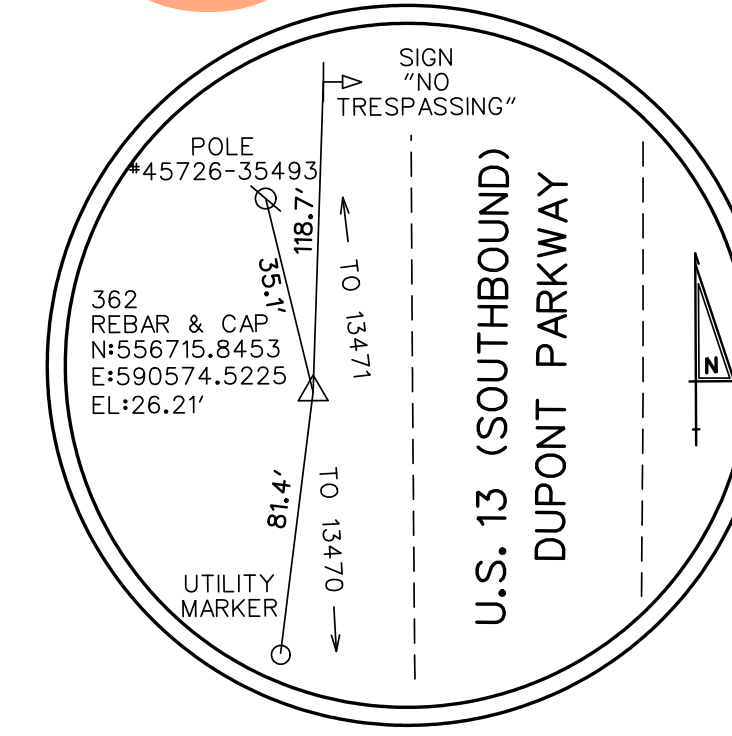
TRAVERSE POINT #359 REBAR AND CAP



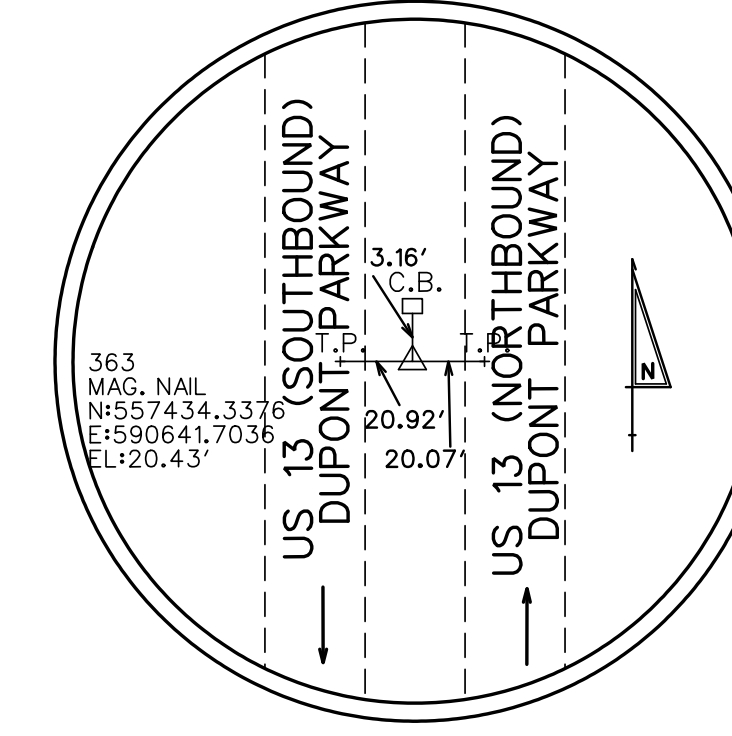
TRAVERSE POINT #360 MAG. NAIL



TRAVERSE POINT #361 REBAR AND CAP



TRAVERSE POINT #362 REBAR AND CAP



TRAVERSE POINT #363 MAG. NAIL

ADDENDUMS / REVISIONS

NOT TO SCALE

US 13 & PORT PENN RD INTERSECTION

Table with columns: CONTRACT, COUNTY, BRIDGE NO., DESIGNED BY, CHECKED BY.

HORIZONTAL AND VERTICAL CONTROL

Table with columns: SHEET NO., TOTAL SHTS., HV-03.