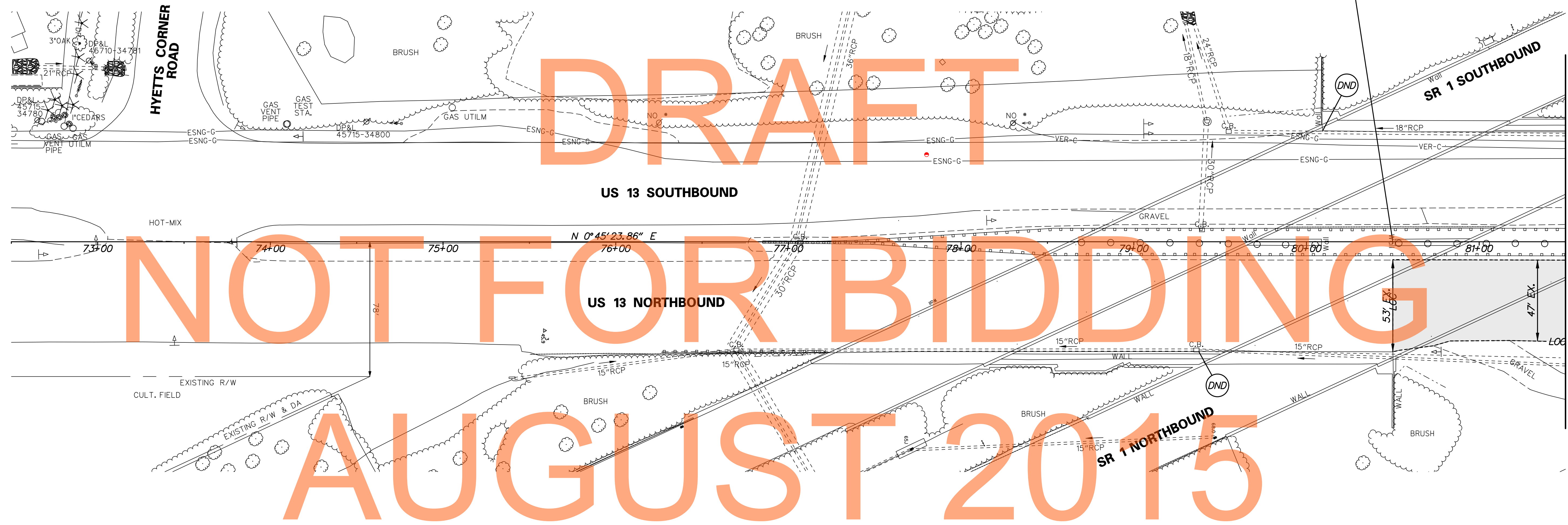
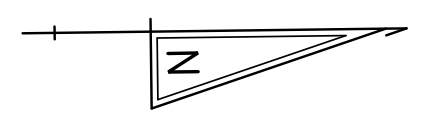


**BEGIN
CONTRACT T201011302
STATION 80+50**

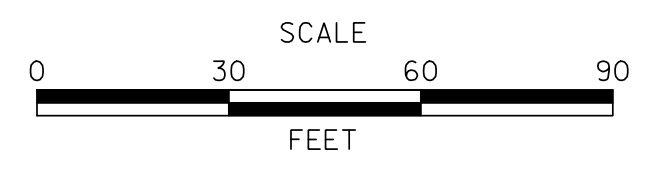


DRAFT
NOT FOR BIDDING
AUGUST 2015

M:\1653-000\CONTRACT ID\CADD\CPO010301_L_ID.dgn 9/17/2015 8:44:52 AM



ADDENDUMS / REVISIONS	



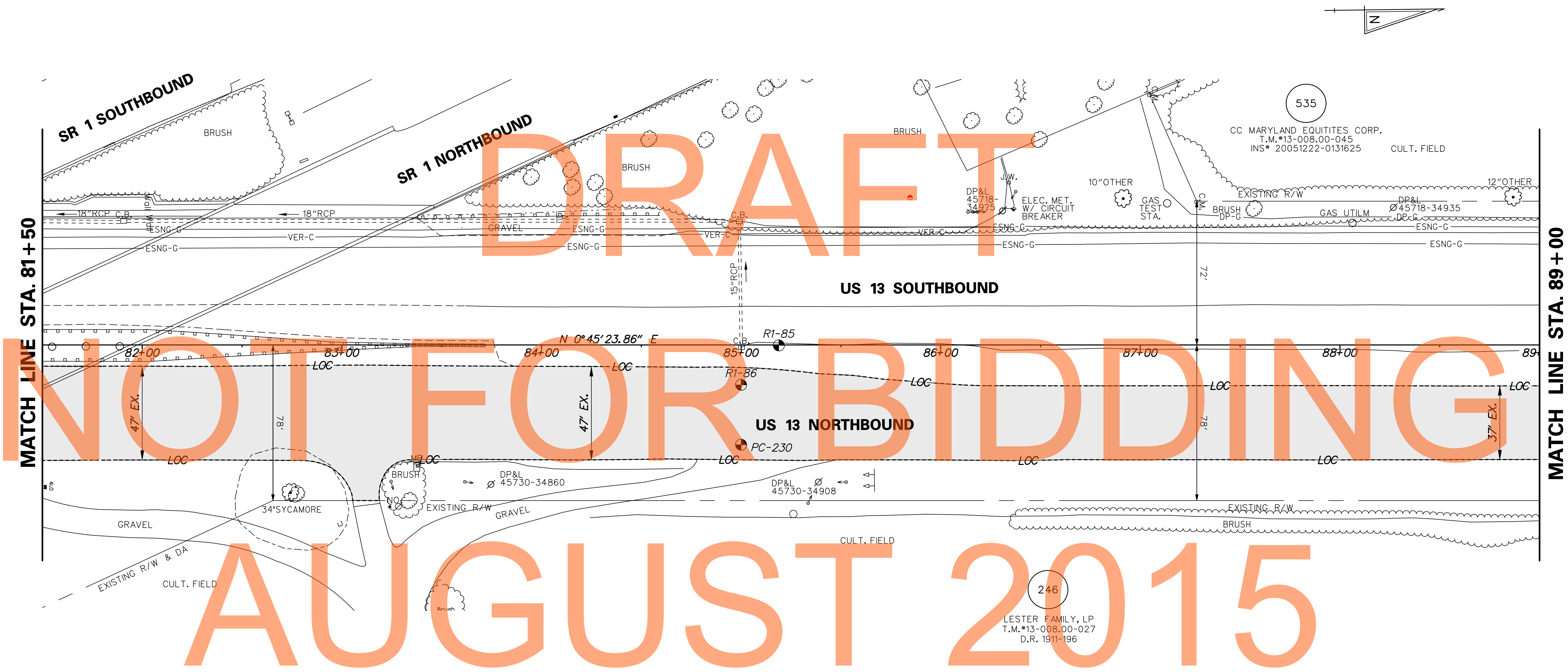
**US 13 & PORT PENN RD
INTERSECTION**

CONTRACT T201011302	BRIDGE NO.
COUNTY NEW CASTLE	DESIGNED BY: A.M.S.
	CHECKED BY: B.R.T.

CONSTRUCTION PLAN

CP-01
SHEET NO. 24
TOTAL SHTS. 179

ROADWAY CORE SCHEDULE			
NO.	STATION	OFFSET	DESCRIPTION
PC-230	85+00.00	50.00'	5.5" HMA, 0.75" ST



NOT FOR BIDDING

AUGUST 2015

M:\16531-000\CONTRACT ID\CADD\CP002U301_ID.dgn 8/17/2015 8:52:42 AM



ADDENDUMS / REVISIONS	



US 13 & PORT PENN RD INTERSECTION

CONTRACT	BRIDGE NO.
T201011302	
COUNTY	DESIGNED BY: A.M.S.
NEW CASTLE	CHECKED BY: B.R.T.

CONSTRUCTION PLAN

CP-02
SHEET NO.
25
TOTAL SHTS.
179

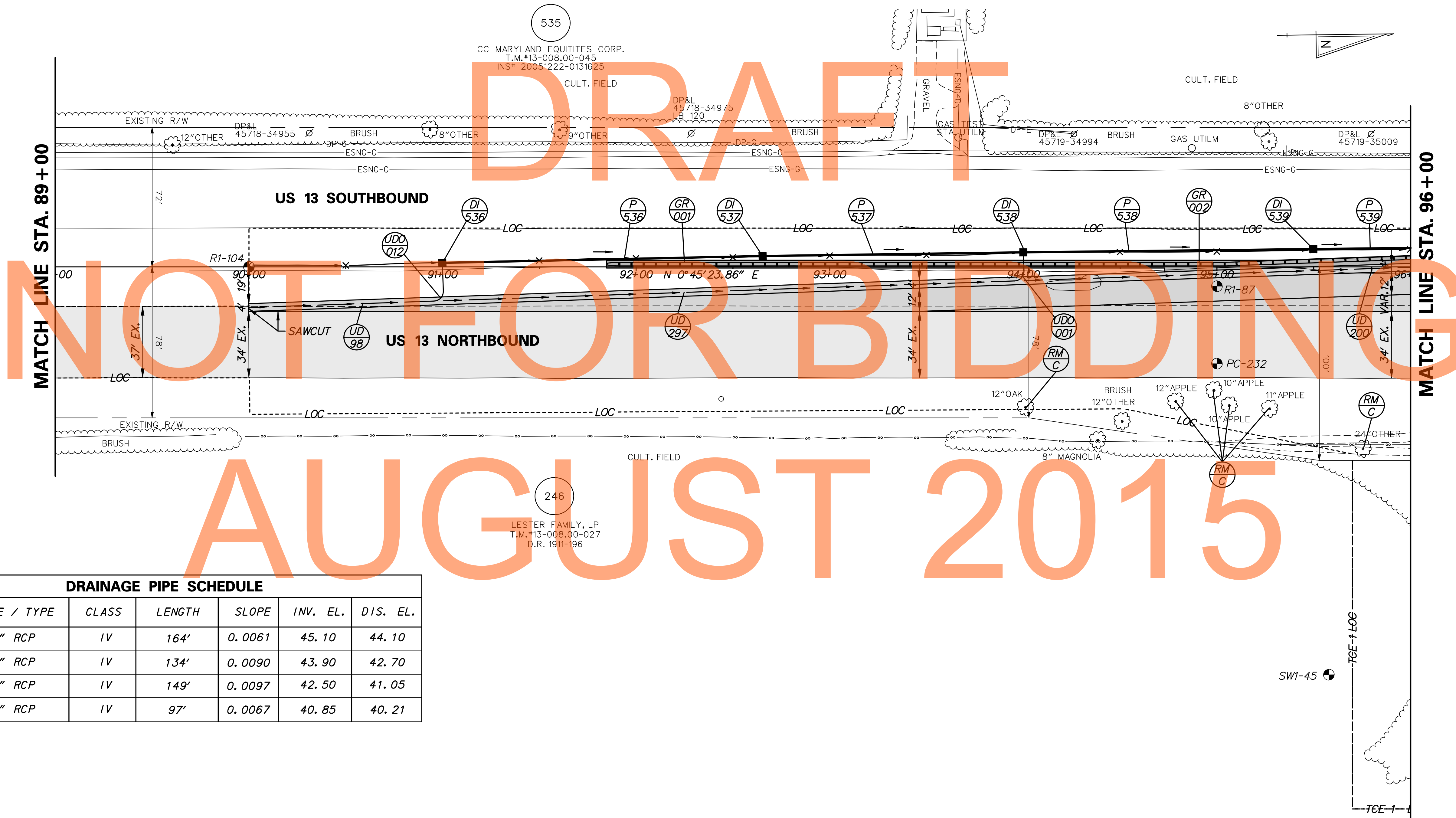
GUARDRAIL SCHEDULE				
NO.	ITEM DESCRIPTION / TYPE	BEGIN STA.	OFFSET	LENGTH
001	GUARDRAIL END TREATMENT ATTENUATOR, TYPE 3-31	91+83.79	-1.42	50.00
002	GALVANIZED STEEL BEAM GUARDRAIL, TYPE 3-31	92+35.36	-1.42	364.70

UNDERDRAIN OUTLETS		
NO.	LENGTH	DIS. EL.
001	15.48'	44.66
012	20.35'	47.86

NOTE: UNDERDRAIN OUTLET DISCHARGE ELEVATION GIVEN AT THE DOWNSTREAM SIDE OF THE HEADWALL.

DRAINAGE INLET SCHEDULE						
NO.	STATION	OFFSET	BOX SIZE	GRATE	T. G. EL.	INV. EL.
536	91+00.00	-2.21	34" x 18"	2	48.94	45.10
537	92+65.33	-5.32	34" x 18"	2	47.30	43.90
538	94+00.00	-7.46	34" x 18"	2	46.06	42.50
539	95+50.58	-8.66	34" x 18"	2	45.23	40.85

ROADWAY CORE SCHEDULE			
NO.	STATION	OFFSET	DESCRIPTION
PC-232	95+00.00	50.00'	5.25" HMA, 0.5" ST

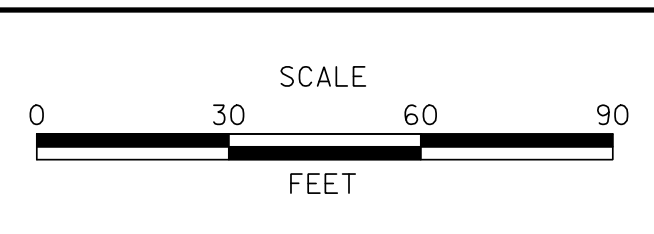


DRAINAGE PIPE SCHEDULE						
NO.	SIZE / TYPE	CLASS	LENGTH	SLOPE	INV. EL.	DIS. EL.
536	15" RCP	IV	164'	0.0061	45.10	44.10
537	15" RCP	IV	134'	0.0090	43.90	42.70
538	15" RCP	IV	149'	0.0097	42.50	41.05
539	18" RCP	IV	97'	0.0067	40.85	40.21

No. 17653-000-CONTRACT ID: CADDA\CP0030301_ID.dgn
 8/17/2015 8:58:24 AM



ADDENDUMS / REVISIONS	



US 13 & PORT PENN RD INTERSECTION

CONTRACT T201011302	BRIDGE NO.
COUNTY NEW CASTLE	DESIGNED BY: A.M.S.
	CHECKED BY: B.R.T.

CONSTRUCTION PLAN	
SHEET NO.	26
TOTAL SHTS.	179

CP-03

UTILITY TEST HOLE SCHEDULE						
NO.	UTILITY	STATION	OFFSET	GRND EL.	COVER	O. D. & MATERIAL
101	DP-G	101+81.20	-149.6'	44.47	3.75	8" YELLOW PLASTIC PIPE
102	DP-G	102+01.73	-92.8'	44.68	4.09	8" YELLOW PLASTIC PIPE
103	DP-G	103+92.34	-70.1'	46.28	4.52	8" ORANGE PLASTIC PIPE
104	ESNG-G	103+91.63	-58.5'	47.49	3.38	10" BLACK COATED STEEL PIPE
105	ESNG-G	103+91.48	-53.6'	47.67	3.89	16" PLASTIC COATED STEEL PIPE

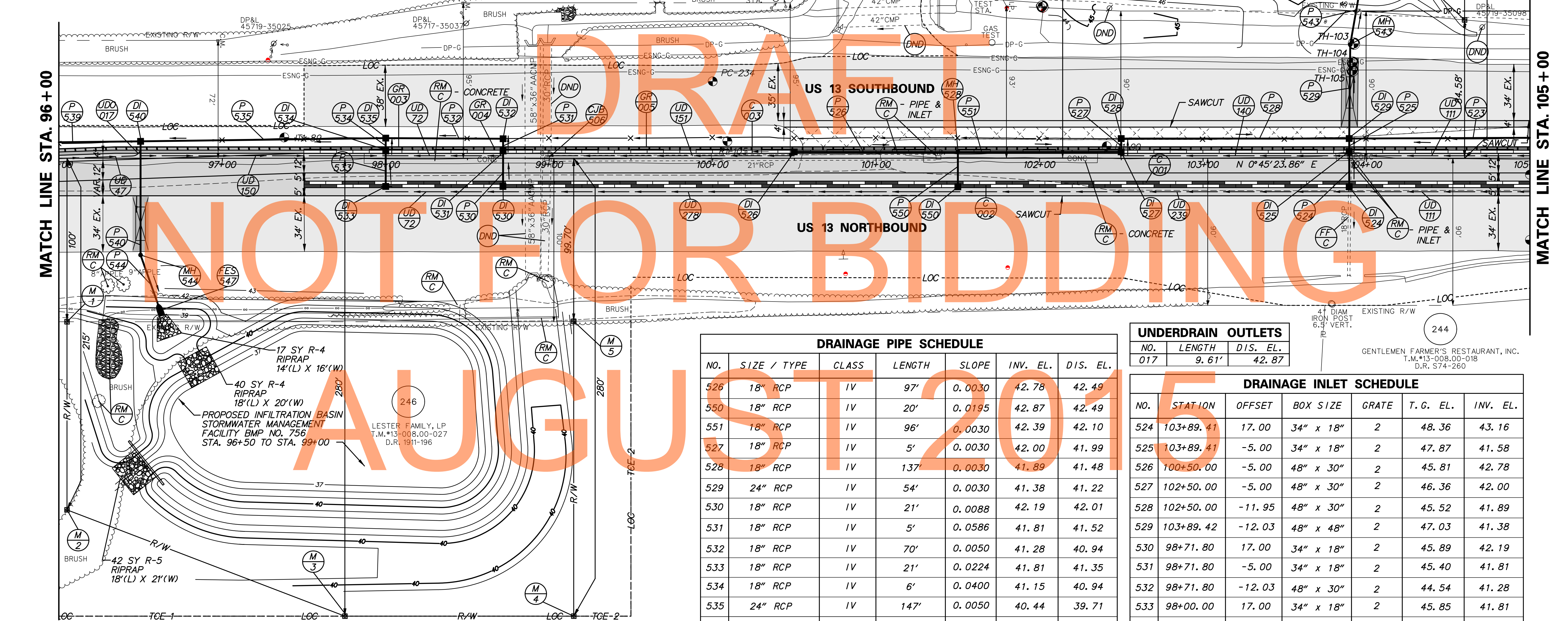
MANHOLE SCHEDULE					
NO.	STATION	OFFSET	SIZE	T. S. EL.	INV. EL.
528	101+50.00	-3.76	48" X 30"	46.16	42.39
543	103+90.04	-69.51	48" X 48"	46.50	41.12
544	96+50.00	59.18	48" X 48"	45.40	39.23

GUARDRAIL SCHEDULE				
NO.	ITEM DESCRIPTION / TYPE	BEGIN STA.	OFFSET	LENGTH
003	GALVANIZED STEEL BEAM GUARDRAIL, TYPE 3-31	96+00.00	-5.83	260.18
004	GUARDRAIL OVER CULVERTS, TYPE 3-31	98+54.04	-5.83	75.00
005	GALVANIZED STEEL BEAM GUARDRAIL, TYPE 3-31	99+27.61	-5.83	564.84

CONVERT TO JUNCTION BOX SCHEDULE				
NO.	STATION	OFFSET	T. S. EL.	INV. EL.
506	98+98.85	0.00	43.95	40.31

DRAINAGE PIPE SCHEDULE						
NO.	SIZE / TYPE	CLASS	LENGTH	SLOPE	INV. EL.	DIS. EL.
523	18" RCP	IV	267'	0.0184	46.40	41.48
524	18" RCP	IV	21'	0.0127	43.16	42.90
525	18" RCP	IV	5'	0.0200	41.58	41.48

CURB AND GUTTER SCHEDULE		
NO.	ITEM DESCRIPTION / TYPE	LENGTH
001	PCC CURB, TYPE 2	750.00'
002	PCC CURB, TYPE 2	750.00'
003	PCC CURB AND GUTTER, TYPE 1-4	750.11'



FLARED END SECTION SCHEDULE					
NO.	STATION	OFFSET	SIZE / TYPE	SLOPE	SAFETY GRATE
546	103+97.14	-109.77	24" RCP	0.0030	NO
547	96+60.47	88.80	24" RCP	0.0030	NO

ROADWAY CORE SCHEDULE			
NO.	STATION	OFFSET	DESCRIPTION
PC-234	100+00.00	-47.00'	8.5" HMA

DRAINAGE PIPE SCHEDULE						
NO.	SIZE / TYPE	CLASS	LENGTH	SLOPE	INV. EL.	DIS. EL.
526	18" RCP	IV	97'	0.0030	42.78	42.49
550	18" RCP	IV	20'	0.0195	42.87	42.49
551	18" RCP	IV	96'	0.0030	42.39	42.10
527	18" RCP	IV	5'	0.0030	42.00	41.99
528	18" RCP	IV	137'	0.0030	41.89	41.48
529	24" RCP	IV	54'	0.0030	41.38	41.22
530	18" RCP	IV	21'	0.0088	42.19	42.01
531	18" RCP	IV	5'	0.0586	41.81	41.52
532	18" RCP	IV	70'	0.0050	41.28	40.94
533	18" RCP	IV	21'	0.0224	41.81	41.35
534	18" RCP	IV	6'	0.0400	41.15	40.94
535	24" RCP	IV	147'	0.0050	40.44	39.71
540	24" RCP	IV	66'	0.0030	39.53	39.33
543	24" RCP	IV	32'	0.0030	41.12	41.02
544	24" RCP	IV	32'	0.0030	39.23	39.14

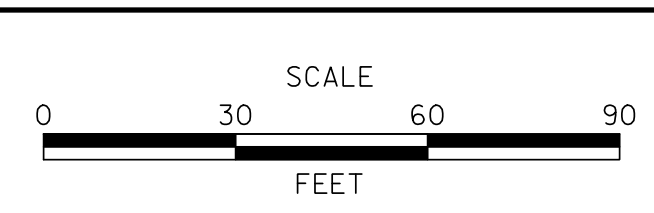
UNDERDRAIN OUTLETS		
NO.	LENGTH	DIS. EL.
017	9.61'	42.87

DRAINAGE INLET SCHEDULE						
NO.	STATION	OFFSET	BOX SIZE	GRATE	T. G. EL.	INV. EL.
524	103+89.41	17.00	34" x 18"	2	48.36	43.16
525	103+89.41	-5.00	34" x 18"	2	47.87	41.58
526	100+50.00	-5.00	48" x 30"	2	45.81	42.78
527	102+50.00	-5.00	48" x 30"	2	46.36	42.00
528	102+50.00	-11.95	48" x 30"	2	45.52	41.89
529	103+89.42	-12.03	48" x 48"	2	47.03	41.38
530	98+71.80	17.00	34" x 18"	2	45.89	42.19
531	98+71.80	-5.00	34" x 18"	2	45.40	41.81
532	98+71.80	-12.03	48" x 30"	2	44.54	41.28
533	98+00.00	17.00	34" x 18"	2	45.85	41.81
534	98+00.00	-5.00	34" x 18"	2	45.37	41.15
535	98+00.00	-12.28	48" x 30"	2	44.48	40.44
540	96+50.00	-10.31	48" x 48"	2	44.97	39.53
550	101+50.00	17.00	34" x 18"	2	46.54	42.87

M:\2015\CONTRACT ID\CADD\CP004030_1.dgn
 11/17/2015 8:06:25 AM



ADDENDUMS / REVISIONS	



US 13 & PORT PENN RD INTERSECTION

CONTRACT T201011302	BRIDGE NO.
COUNTY NEW CASTLE	DESIGNED BY: A.M.S. CHECKED BY: B.R.T.

CONSTRUCTION PLAN

SHEET NO.	27
TOTAL SHTS.	179

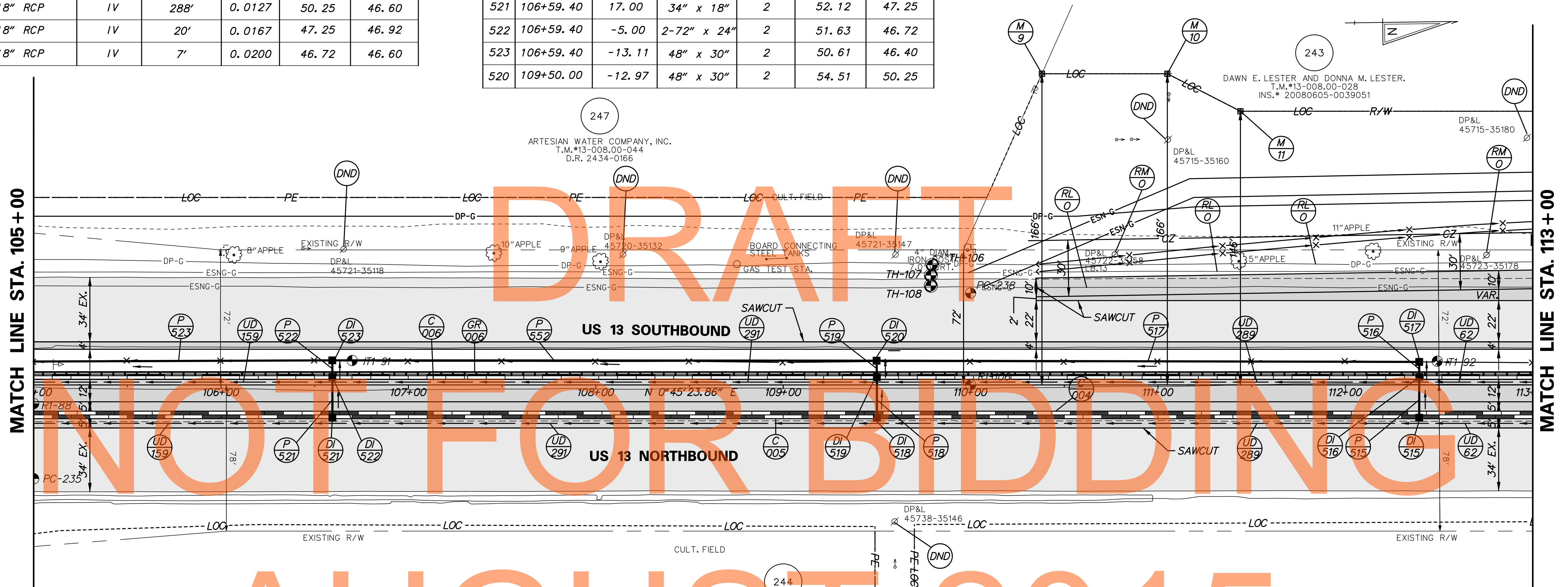
MATCH LINE STA. 105 + 00

MATCH LINE STA. 96 + 00

DRAINAGE PIPE SCHEDULE						
NO.	SIZE / TYPE	CLASS	LENGTH	SLOPE	INV. EL.	DIS. EL.
515	18" RCP	IV	20'	0.0200	54.41	54.01
516	18" RCP	IV	6'	0.0593	53.80	53.48
517	18" RCP	IV	287'	0.0097	53.25	50.45
518	18" RCP	IV	20'	0.0125	51.10	50.85
519	18" RCP	IV	6'	0.0335	50.65	50.45
552	18" RCP	IV	288'	0.0127	50.25	46.60
521	18" RCP	IV	20'	0.0167	47.25	46.92
522	18" RCP	IV	7'	0.0200	46.72	46.60

DRAINAGE INLET SCHEDULE						
NO.	STATION	OFFSET	BOX SIZE	GRATE	T. G. EL.	INV. EL.
515	112+39.40	17.00	34" x 18"	2	58.99	54.41
516	112+39.40	-5.00	2-72" x 24"	2	58.50	53.80
517	112+39.40	-12.31	48" x 30"	2	57.60	53.25
518	109+50.00	17.00	34" x 18"	2	56.00	51.10
519	109+50.00	-5.00	2-72" x 24"	2	55.52	50.65
521	106+59.40	17.00	34" x 18"	2	52.12	47.25
522	106+59.40	-5.00	2-72" x 24"	2	51.63	46.72
523	106+59.40	-13.11	48" x 30"	2	50.61	46.40
520	109+50.00	-12.97	48" x 30"	2	54.51	50.25

GUARDRAIL SCHEDULE				
NO.	ITEM DESCRIPTION / TYPE	BEG IN STA.	OFFSET	LENGTH
006	GALVANIZED STEEL BEAM GUARDRAIL, TYPE 3-31	105+00.00	-5.83	800.00



AUGUST 2015

CURB AND GUTTER SCHEDULE		
NO.	ITEM DESCRIPTION / TYPE	LENGTH
004	PCC CURB, TYPE 2	800.00'
005	PCC CURB, TYPE 2	800.00'
006	PCC CURB AND GUTTER, TYPE 4	800.00'

UTILITY TEST HOLE SCHEDULE						
NO.	UTILITY	STATION	OFFSET	GRND EL.	COVER	O. D. & MATERIAL
106	DP-G	109+79.61	-64.0'	56.10	4.99	8" ORANGE PLASTIC PIPE
107	ESNG-G	109+78.81	-58.4'	55.66	3.70	10" BLACK COATED STEEL PIPE
108	ESNG-G	109+78.78	-52.9'	55.66	3.50	10" BLACK PLASTIC COATED STEEL PIPE

ROADWAY CORE SCHEDULE			
NO.	STATION	OFFSET	DESCRIPTION
PC-235	105+00.00	50.00'	5.5 HMA
PC-238	110+00.00	-49.00'	10" HMA

M:\71653-000\CONTRACT 17172015-00\CP050501-01.dgn



ADDENDUMS / REVISIONS	



US 13 & PORT PENN RD INTERSECTION

CONTRACT T201011302	BRIDGE NO.
COUNTY NEW CASTLE	DESIGNED BY: A.M.S. CHECKED BY: B.R.T.

CONSTRUCTION PLAN

CP-05
SHEET NO. 28
TOTAL SHTS. 179

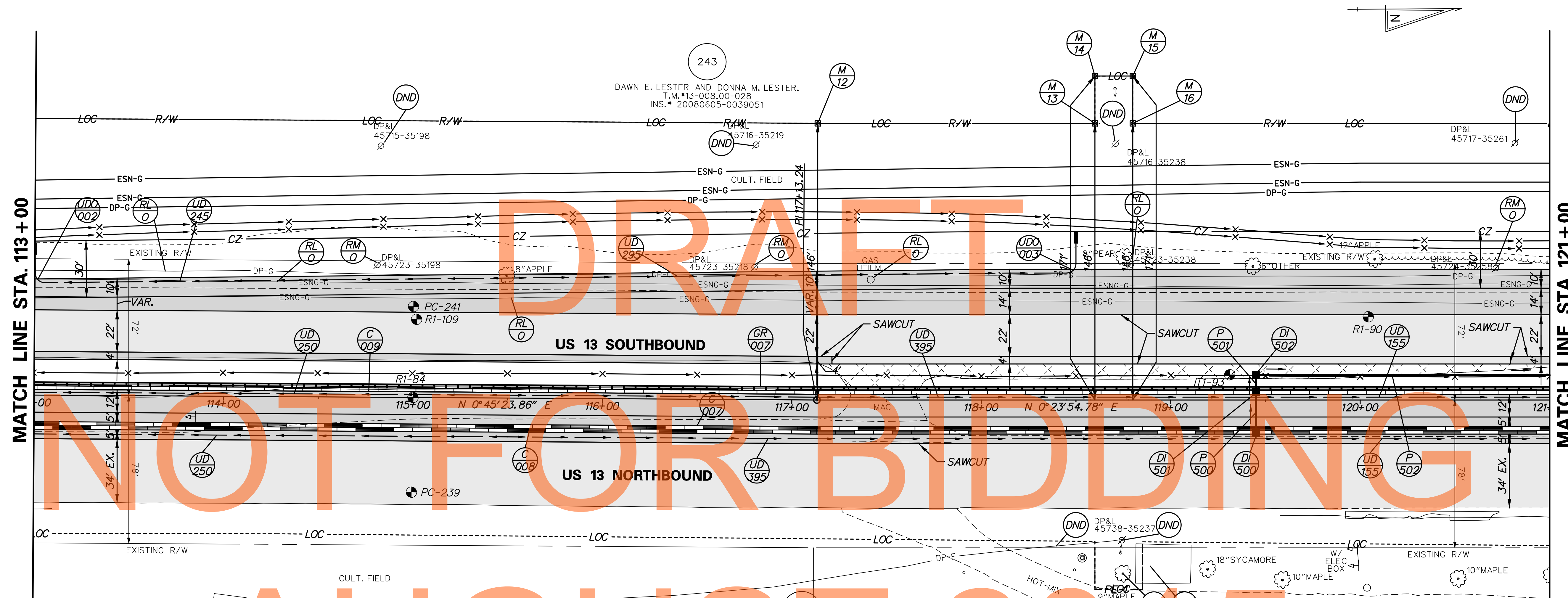
GUARDRAIL SCHEDULE				
NO.	ITEM DESCRIPTION / TYPE	BEGIN STA.	OFFSET	LENGTH
007	GALVANIZED STEEL BEAM GUARDRAIL, TYPE 3-31	113+00.00	-5.83	799.96

CURB AND GUTTER SCHEDULE		
NO.	ITEM DESCRIPTION / TYPE	LENGTH
007	PCC CURB, TYPE 2	800.04'
008	PCC CURB, TYPE 2	800.14'
009	PCC CURB AND GUTTER, TYPE 4	799.98'

ROADWAY CORE SCHEDULE			
NO.	STATION	OFFSET	DESCRIPTION
PC-239	114+99.51	50.00' RT.	6.5" HMA
PC-241	115+00.00	48.00' LT.	10" HMA

UNDERDRAIN OUTLETS		
NO.	LENGTH	DIS. EL.
002	18.71'	55.77
003	19.51'	54.12

NOTE: UNDERDRAIN OUTLET DISCHARGE ELEVATION GIVEN AT THE DOWNSTREAM SIDE OF THE HEADWALL.



NOT FOR BIDDING

AUGUST 2015

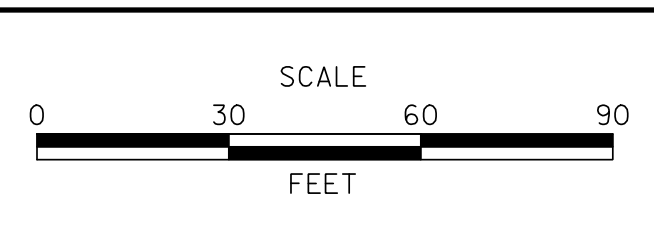
DRAINAGE INLET SCHEDULE						
NO.	STATION	OFFSET	BOX SIZE	GRATE	T. G. EL.	INV. EL.
500	119+45.00	17.00	34" x 18"	2	56.86	52.03
501	119+45.00	-5.00	2-72" x 24"	2	56.37	51.20
502	119+45.00	-12.71	48" x 30"	2	55.41	50.80

DRAINAGE PIPE SCHEDULE						
NO.	SIZE / TYPE	CLASS	LENGTH	SLOPE	INV. EL.	DIS. EL.
500	18" RCP	IV	20'	0.0325	52.03	51.38
501	18" RCP	IV	6'	0.0319	51.20	51.02
502	18" RCP	IV	288'	0.0149	50.80	46.50

M:\716531-000\CONTRACT 17172015\CP06\0301_ID.dgn 8/17/2015 8:23:00 AM



ADDENDUMS / REVISIONS	



US 13 & PORT PENN RD INTERSECTION

CONTRACT T201011302	BRIDGE NO.
COUNTY NEW CASTLE	DESIGNED BY: A.M.S.
	CHECKED BY: B.R.T.

CONSTRUCTION PLAN

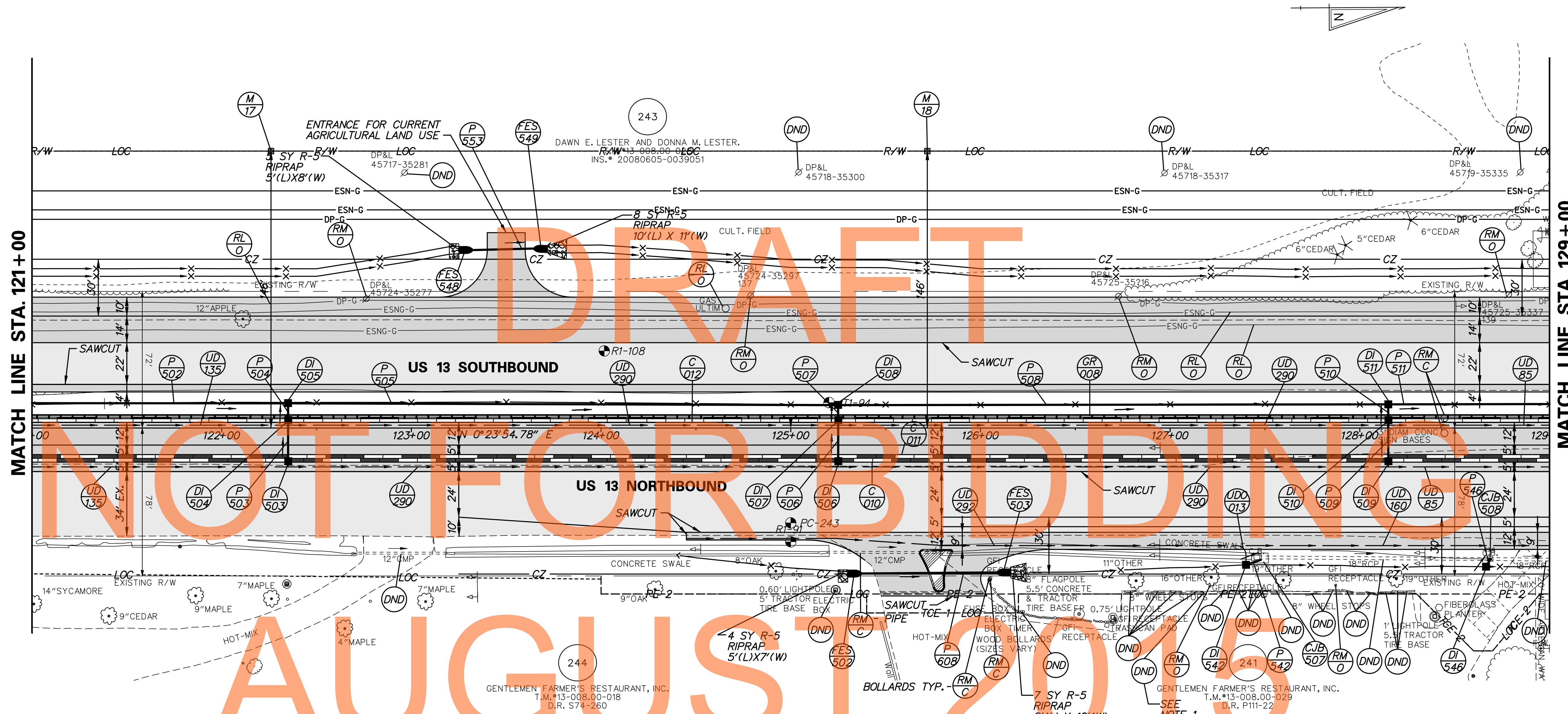
CP-06
SHEET NO. 29
TOTAL SHTS. 179

CURB AND GUTTER SCHEDULE		
NO.	ITEM DESCRIPTION / TYPE	LENGTH
010	PCC CURB, TYPE 2	800.00'
011	PCC CURB, TYPE 2	800.00'
012	PCC CURB AND GUTTER, TYPE 4	800.00'

GUARDRAIL SCHEDULE				
NO.	ITEM DESCRIPTION / TYPE	BEGIN STA.	OFFSET	LENGTH
008	GALVANIZED STEEL BEAM GUARDRAIL, TYPE 3-31	121+00.00	-5.83	800.00

FLARED END SECTION SCHEDULE			
NO.	SIZE/TYPE	SLOPE	SAFETY GRATE
502	14" X 23" HERCP	0.0175	NO
503	14" X 23" HERCP	0.0175	NO
548	15" RCP	0.0263	NO
549	15" RCP	0.0263	NO

ROADWAY CORE SCHEDULE			
NO.	STATION	OFFSET	DESCRIPTION
PC-243	125+00.00	50.00'	8" HMA



DRAINAGE PIPE SCHEDULE						
NO.	SIZE / TYPE	CLASS	LENGTH	SLOPE	INV. EL.	DIS. EL.
503	18" RCP	IV	20'	0.0300	47.52	46.91
504	18" RCP	IV	7'	0.0300	46.70	46.50
505	18" RCP	IV	288'	0.0177	46.30	41.20
506	18" RCP	IV	20'	0.0200	41.91	41.51
507	18" RCP	IV	5'	0.0200	41.30	41.20
508	18" RCP	IV	288'	0.0194	41.00	35.40
509	18" RCP	IV	20'	0.0300	36.38	35.77
510	18" RCP	IV	6'	0.0300	35.56	35.40
511	18" RCP	IV	288'	0.0153	35.20	30.80
542	18" RCP	IV	6'	0.0109	37.51	37.45
546	15" RCP	IV	2'	0.0730	35.00	34.87
553	15" RCP	IV	31'	0.0263	45.30	44.49
608	14" X 23" HERCP	V	86'	0.0175	43.69	42.19

DRAINAGE INLET SCHEDULE						
NO.	STATION	OFFSET	BOX SIZE	GRATE	T.G. EL.	INV. EL.
503	122+35.00	17.00	34" x 18"	2	51.73	47.52
504	122+35.00	-5.00	2-72" x 24"	2	51.24	46.70
505	122+35.00	-13.64	48" x 30"	2	50.21	46.30
506	125+25.00	17.00	34" x 18"	2	46.41	41.91
507	125+25.00	-5.00	2-72" x 24"	2	45.92	41.30
508	125+25.00	-11.94	48" x 30"	2	45.12	41.00
509	128+15.00	17.00	34" x 18"	2	41.07	36.38
510	128+15.00	-5.00	2-72" x 24"	2	40.58	35.56
511	128+15.00	-12.40	48" x 30"	2	39.68	35.20
542*	127+40.00	72.11	34" x 24"	2	40.76	37.51
546*	128+66.51	74.02	34" x 24"	2	38.65	35.00

CONVERT TO JUNCTION BOX SCHEDULE				
NO.	STATION	OFFSET	T.S. EL.	INV. EL.
507	127+47.83	68.26	41.06	37.45
508	128+68.72	69.10	39.05	34.63

UNDERDRAIN OUTLETS		
NO.	LENGTH	DIS. EL.
013	10.96'	39.13

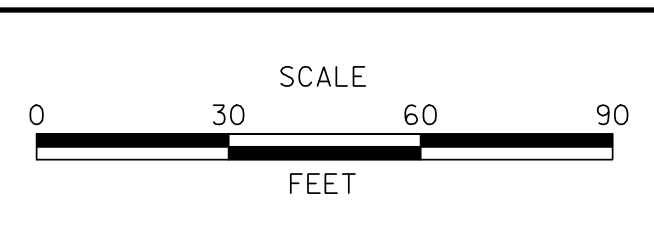
NOTE: UNDERDRAIN OUTLET DISCHARGE ELEVATION GIVEN AT THE DOWNSTREAM SIDE OF THE HEADWALL.

NOTES:
1. DO NOT DISTURB PARKING LOT PAVEMENT.

M:\172015\000\Contract\ID\CADD\CP07\U301_ID.dgn 9/17/2015 8:55:57 AM



ADDENDUMS / REVISIONS	



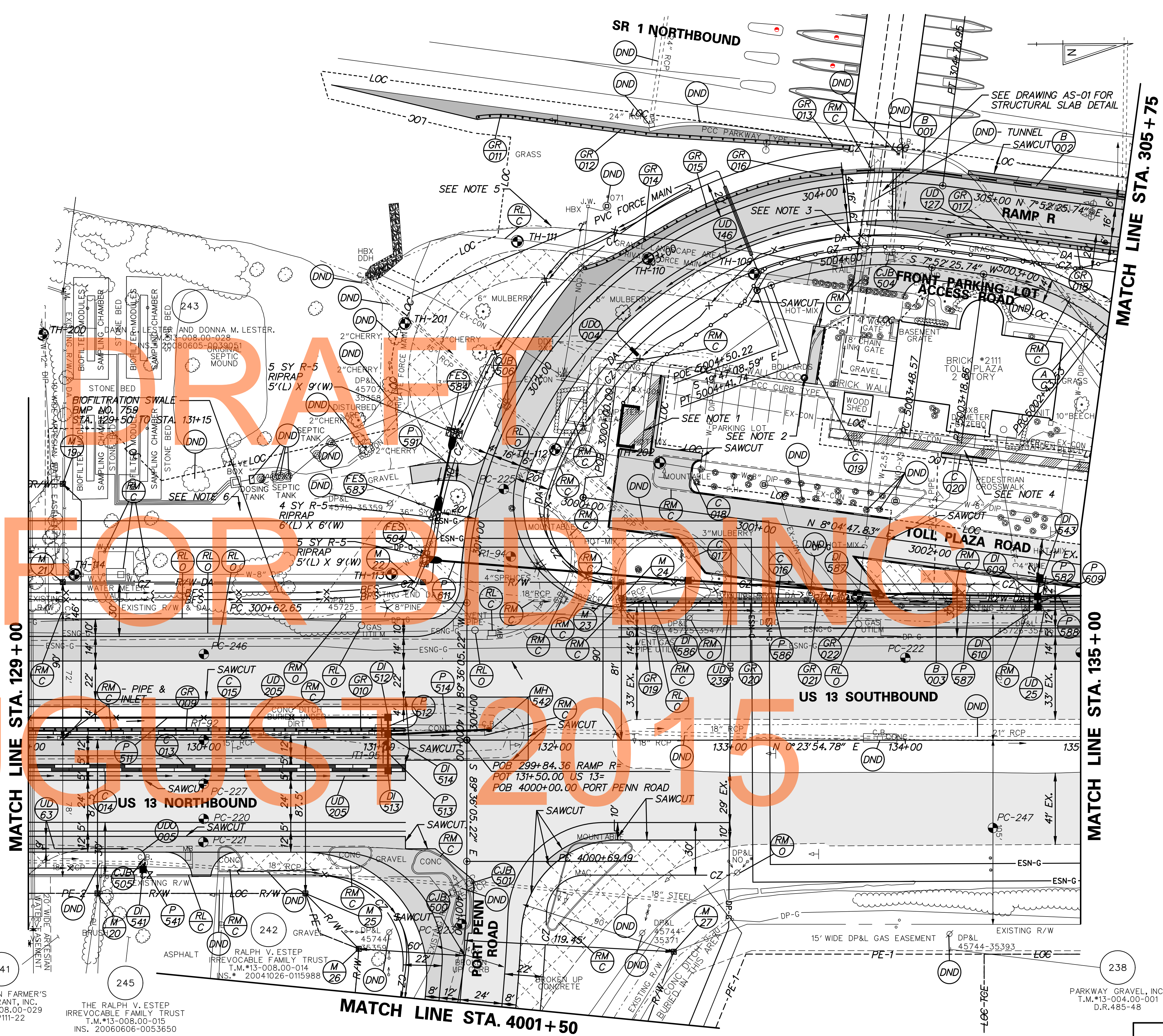
US 13 & PORT PENN RD INTERSECTION

CONTRACT	T201011302	BRIDGE NO.	
COUNTY	NEW CASTLE	DESIGNED BY:	A.M.S.
		CHECKED BY:	B.R.T.

CONSTRUCTION PLAN	
SHEET NO.	30
TOTAL SHTS.	179

CP-07

- NOTES:**
- SEE CONSTRUCTION DETAIL DT-06 FOR TRASH ENCLOSURE. FOR ENTRANCE DETAIL, SEE DELDOT STANDARD CONSTRUCTION DETAIL C-3, ENTRANCES. (MATCH SIDEWALK PAVEMENT SECTION)
 - SEE CONSTRUCTION DETAIL DT-06 FOR BOLLARD.
 - DELDOT STANDARD RIGHT-OF-WAY FENCE POST SPACING SHALL SPAN THE EXISTING PEDESTRIAN TUNNEL.
 - SEE CONSTRUCTION DETAIL DT-02 FOR CURB RAMP.
 - SEE CONSTRUCTION DETAIL DT-02 FOR 2" PVC SCH. 40 FORCE MAIN.
 - CONTRACTOR SHALL INSTALL NEW 8" WATER SERVICE, (SEE SHEETS UR-02, UR-03.)



NOT FOR CONSTRUCTION

M:\13-008\13-008-001.dgn



ADDENDUMS / REVISIONS	



US 13 & PORT PENN RD INTERSECTION

CONTRACT	BRIDGE NO.
T201011302	
COUNTY	DESIGNED BY: A.M.S.
NEW CASTLE	CHECKED BY: B.R.T.

CONSTRUCTION PLAN

CP-08
SHEET NO.
31
TOTAL SHTS.
179

GENTLEMEN FARMER'S RESTAURANT, INC. T.M.*13-008.00-029 D.R. P111-22

THE RALPH V. ESTEP IRREVOCABLE FAMILY TRUST T.M.*13-008.00-015 INS. 20060606-0053650

PARKWAY GRAVEL, INC. T.M.*13-004.00-001 D.R.485-48

DRAINAGE INLET SCHEDULE						
NO.	STATION	OFFSET	BOX SIZE	GRATE	T. G. EL.	INV. EL.
512	131+05.00	-12.90	48" x 30"	2	34.61	30.60
513	131+05.00	17.00	34" x 18"	2	35.90	31.16
514	131+05.00	-5.00	2-72" x 48"	2	35.41	30.28
541*	129+65.42	73.82	34" x 24"	2	36.67	32.94
543	134+76.37	-90.69	34" x 24"	2	29.90	25.30
586	132+75.37	-90.99	34" x 18"	2	30.31	26.36
587	133+81.36	-83.06	48" x 48"	1	30.67	25.62
609	134+75.45	-82.52	48" x 48"	2	29.55	24.88
610	134+75.48	-78.00	2-72" x 24"	1	30.61	25.70

* CONTRACTOR SHALL VERIFY LOCATIONS OF EXISTING INLETS AND ADJUST FLOW LINE AND PROPOSED INLETS AS NECESSARY.

DRAINAGE PIPE SCHEDULE						
NO.	SIZE / TYPE	CLASS	LENGTH	SLOPE(FT/FT)	INT. EL.	DIS. EL.
586	24" RCP	IV	104'	0.0051	26.36	25.84
587	24" RCP	IV	90'	0.0049	25.62	25.18
588	24" RCP	IV	217'	0.0062	24.88	23.53
512	18" RCP	IV	6'	0.0153	30.60	30.51
513	18" RCP	IV	18'	0.0200	31.16	30.80
514	18" RCP	IV	54'	0.0193	30.28	29.25
541	15" RCP	IV	1'	0.0400	32.94	32.91
591	15" RCP	IV	43'	0.0091	33.00	32.61
609	18" RCP	IV	3'	0.0098	25.70	25.68
611	19" x 30" HERCP	IV	135'	0.0348	31.26	26.57
582	18" RCP	IV	7'	0.0200	25.30	25.18

CONVERT TO JUNCTION BOX SCHEDULE				
NO.	STATION	OFFSET	T. S. EL.	INV. EL.
500	4000+87.06	8.23'	33.83	30.24
501	4000+81.98	-1.20'	33.60	30.01
504	5004+27.95	-3.96'	40.58	37.05
505	129+66.49	70.10'	36.52	32.63
506	301+77.78	-4.19'	33.40	31.27

MANHOLE SCHEDULE					
NO.	STATION	OFFSET	SIZE	T. S. EL.	INV. EL.
542	131+62.71	-5.99'	48" X 30"	34.75	28.77

FLARED END SECTION SCHEDULE			
NO.	SIZE / TYPE	SLOPE	SAFETY GRATE
504	19" x 30" HERCP	0.0348	YES
583	15" RCP	0.0091	NO
584	15" RCP	0.0091	NO

UTILITY TEST HOLE SCHEDULE						
NO.	UTILITY	STATION	OFFSET	GRND EL.	COVER	O. D. & MATERIAL
109	PRIVATE FM	303+47.09	37.4'	43.73	4.23	2" WHITE PLASTIC PIPE
110	PRIVATE FM	302+93.71	0.8'	43.08	4.75	2" WHITE PLASTIC PIPE
111	PRIVATE FM	302+48.13	-55.1'	40.21	4.32	2" WHITE PLASTIC PIPE
112	AW-W	301+66.40	31.2'	35.26	5.19	8" DUCTILE IRON PIPE
113	AW-W	300+76.47	-43.4'	34.66	4.06	8" DUCTILE IRON PIPE
114	AW-W	129+26.28	-94.2'	41.80	5.30	8" DUCTILE IRON PIPE
115	DP-G	133+72.51	-82.3'	31.36	3.53	1" ORANGE PLASTIC PIPE
200	AW-W	129+08.00	-231.3'	43.73	3.80	12" BLACK DUCTILE IRON PIPE
201	PRIVATE FM	301+88.49	-78.1'	37.64	3.91	2" WHITE PLASTIC PIPE
202	PRIVATE W	301+94.78	87.4'	34.76	5.62	8" BLACK DUCTILE IRON PIPE

GUARDRAIL SCHEDULE				
NO.	ITEM DESCRIPTION / TYPE	BEGIN STA.	OFFSET	LENGTH
009	GALVANIZED STEEL BEAM GUARDRAIL, TYPE 3-31	129+00.00	-5.83	164.53
010	GUARDRAIL END TREATMENT ATTENUATOR, TYPE 3-31	130+64.53	-5.83	50.00
011	GUARDRAIL END TREATMENT ATTENUATOR, TYPE 2-31	302+71.39	-123.27	50.00
012	GALVANIZED STEEL BEAM GUARDRAIL, TYPE 1-31	302+98.12	-89.91	150.00
013	END ANCHORAGE, TYPE 31	304+08.54	-23.65	12.50
014	GUARDRAIL END TREATMENT ATTENUATOR, TYPE 2-31	302+62.50	-16.76	50.00
015	GALVANIZED STEEL BEAM GUARDRAIL, TYPE 1-31	303+10.37	-8.00	87.50
016	GUARDRAIL TO BARRIER CONN., APPROACH TYPE 1-31	303+95.06	-6.79	19.75
017	GUARDRAIL END TREATMENT ATTENUATOR, TYPE 2-31	304+71.57	27.24	50.00
018	GALVANIZED STEEL BEAM GUARDRAIL, TYPE 1-31	305+28.40	24.00	46.55
019	END ANCHORAGE, TYPE 31	132+38.10	-78.00	12.50
020	GALVANIZED STEEL BEAM GUARDRAIL, TYPE 1-31	132+52.25	-78.00	68.75
021	GALVANIZED STEEL BEAM GUARDRAIL, TYPE 2-31	133+21.00	-78.00	50.00
022	GUARDRAIL TO BARRIER CONN., EXIT TYPE	133+71.00	-78.00	11.50

BARRIER SCHEDULE		
NO.	ITEM DESCRIPTION / TYPE	LENGTH
001	* BIFURCATED CONCRETE MEDIAN BARRIER	58.32
002	BIFURCATED CONCRETE MEDIAN BARRIER	104.07
003	BIFURCATED CONCRETE MEDIAN BARRIER	117.50

* EXTREME CAUTION SHALL BE USED TO AVOID DAMAGING THE COMPOSITE WATERPROOFING MEMBRANE OF THE EXISTING PEDESTRIAN TUNNEL. NON-MECHANIZED EXCAVATION WILL BE REQUIRED WITHIN 1' OF THE TOP OF TUNNEL. BARRIER FOOTING SHALL NOT BE PLACED DIRECTLY ON TOP OF TUNNEL. IF THE TUNNEL IS EXPOSED DURING EXCAVATION, A BOND BREAKER SHALL BE PLACED BETWEEN TOP OF TUNNEL AND BOTTOM OF BARRIER FOOTING.

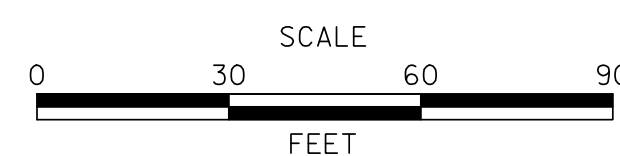
CURB SCHEDULE		
NO.	ITEM DESCRIPTION / TYPE	LENGTH
013	PCC CURB, TYPE 2	215.00
014	PCC CURB, TYPE 2	215.00
017	PCC CURB, TYPE 1-8	435.80
018	PCC CURB, TYPE 1-8	136.16
019	PCC CURB, TYPE 1-8	32.69
020	PCC CURB, TYPE 1-8	25.91

CURB AND GUTTER SCHEDULE		
NO.	ITEM DESCRIPTION / TYPE	LENGTH
015	PCC CURB AND GUTTER, TYPE 1-4	215.00'
016	PCC CURB AND GUTTER, TYPE 1-4	144.40'

ROADWAY CORE SCHEDULE			
NO.	STATION	OFFSET	DESCRIPTION
PC-220	130+00.00	45.00'	10.25" HMA, 8.25" PCC
PC-221	130+00.00	58.22'	11.5" HMA
PC-222	134+00.00	-47.00'	4" HMA
PC-223	4001+04.89	2.13'	4" PCC, 6" CR
PC-225	301+30.00	11.58'	5.25" HMA, 6" CR
PC-227	130+00.00	25.00'	10" HMA, 8.25" PCC
PC-246	130+00.00	25.00'	10.5" HMA
PC-247	134+50.00	50.00'	7" HMA

NOT FOR BIDDING

ADDENDUMS / REVISIONS



US 13 & PORT PENN RD INTERSECTION

CONTRACT	BRIDGE NO.
T201011302	
COUNTY	DESIGNED BY: A.M.S.
NEW CASTLE	CHECKED BY: B.R.T.

CONSTRUCTION PLAN

CP-09

SHEET NO.

32

TOTAL SHTS.

179

DRAINAGE INLET SCHEDULE						
NO.	STATION	OFFSET	BOX SIZE	GRATE	T.G. EL.	INV. EL.
*576	307+17.77	-8.00	2-72" x 24"	2	40.16	35.39
*577	307+17.78	-6.00	34" x 18"	2	40.87	35.44
579	309+35.81	-8.00	2-72" x 48"	2	39.17	34.25
580	311+19.26	-10.06	2-72" x 48"	2	37.73	32.26
581	311+19.37	-6.00	48" x 30"	2	37.26	32.02
589	136+96.27	-78.00	2-72" x 24"	1	28.45	24.13
590	307+89.67	110.80	48" x 30"	2	29.63	26.19

DRAINAGE PIPE SCHEDULE						
NO.	SIZE / TYPE	CLASS	LENGTH	SLOPE(FT/FT)	INT. EL.	DIS. EL.
576	24" RCP	IV	2'	0.0298	35.44	35.38
579	18" RCP	IV	178'	0.0100	34.24	32.47
580	18" RCP	IV	4'	0.0100	32.26	32.22
589	24" RCP	IV	50'	0.0059	23.33	23.04
590	18" RCP	IV	58'	0.0379	26.19	24.00
596	18" RCP	IV	66'	0.0457	23.00	20.00
610	18" RCP	IV	141'	0.0138	32.02	30.08
612	18" RCP	IV	53'	0.0361	28.33	26.44
554	18" RCP	IV	6'	0.0166	24.13	24.03

GUARDRAIL SCHEDULE				
NO.	ITEM DESCRIPTION / TYPE	BEGIN STA.	OFFSET	LENGTH
023	GALVANIZED STEEL BEAM GUARDRAIL, TYPE 1-31	306+75.00	24.00	353.45
024	END ANCHORAGE, TYPE 31	309+28.40	24.00	12.50
025	GUARDRAIL TO BARRIER CONN., APPROACH TYPE 1-31	137+00.00	-78.00	19.75
026	GALVANIZED STEEL BEAM GUARDRAIL, TYPE 1-31	137+19.75	-78.00	131.25
027	CURVED GUARDRAIL SECTION	138+51.00	-78.00	56.25
028	ENTRANCE SPECIAL END ANCHORAGE	3007+47.73	17.00	6.25
029	GALVANIZED STEEL BEAM GUARDRAIL, TYPE 1-31	311+32.90	-6.00	29.25
030	GALVANIZED STEEL BEAM GUARDRAIL, TYPE 2-31	311+62.15	-6.00	50.00
031	GALVANIZED STEEL BEAM GUARDRAIL, TYPE 1-31	312+12.15	-6.00	12.78
032	GUARDRAIL TO BARRIER CONN., EXIT TYPE	311+21.40	-6.00	11.50

MANHOLE SCHEDULE				
NO.	STATION	OFFSET	SIZE	T.S. EL. / INV. EL.
529	3004+73.71	32.23	48" X 48"	27.54 / 23.33

UTILITY TEST HOLE SCHEDULE						
NO.	UTILITY	STATION	OFFSET	GRND EL.	COVER	O. D. & MATERIAL
119	EX-CON	306+01.44	-5.5'	40.85	4.19	3" METAL CONDUITS

ROADWAY CORE SCHEDULE				
NO.	STATION	OFFSET	DESCRIPTION	LENGTH
R1-93	135+00.00	-50.00'	8" HMA	
R1-95	306+00.00	0.00'	3" GRAVEL	
R1-96	311+00.00	0.00'	4" TOPSOIL	
R1-97	140+00.00	-50.00'	5" HMA, 5" CRUSHED STONE	

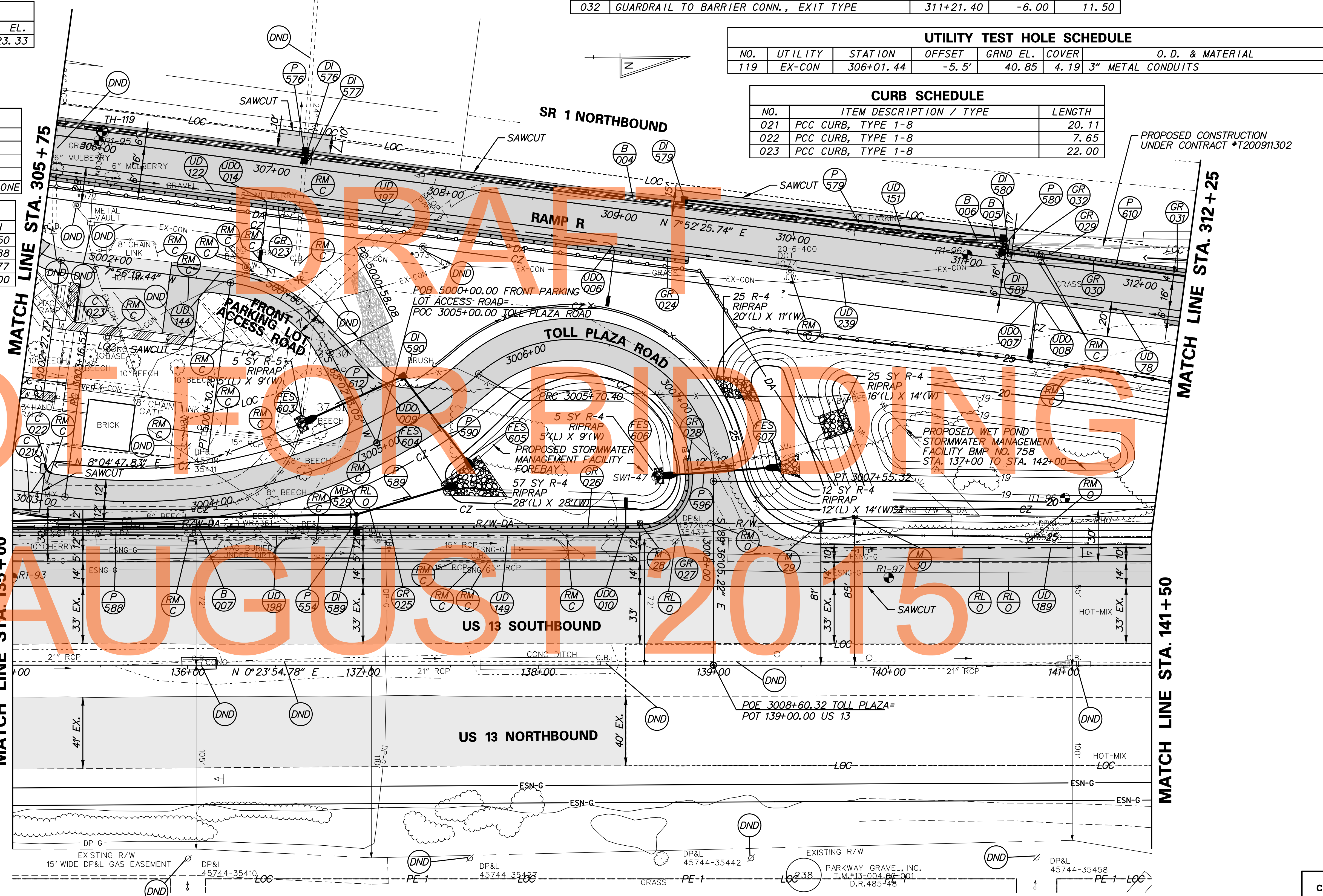
CURB SCHEDULE		
NO.	ITEM DESCRIPTION / TYPE	LENGTH
021	PCC CURB, TYPE 1-8	20.11
022	PCC CURB, TYPE 1-8	7.65
023	PCC CURB, TYPE 1-8	22.00

BARRIER SCHEDULE		
NO.	ITEM DESCRIPTION / TYPE	LENGTH
004	BIFURCATED CONCRETE MEDIAN BARRIER	522.50
005	BIFURCATED CONCRETE MEDIAN BARRIER	23.88
006	BIFURCATED CONCRETE MEDIAN BARRIER	23.77
007	BIFURCATED CONCRETE MEDIAN BARRIER	200.00

UNDERDRAIN OUTLETS		
NO.	LENGTH	DIS. EL.
006	37.14'	25.92
007	35.80'	25.50
008	35.80'	25.50
009	14.44'	28.16
010	21.20'	23.50
014	37.00'	36.40

NOTE: UNDERDRAIN OUTLET DISCHARGE ELEVATION GIVEN AT THE DOWNSTREAM SIDE OF THE HEADWALL.

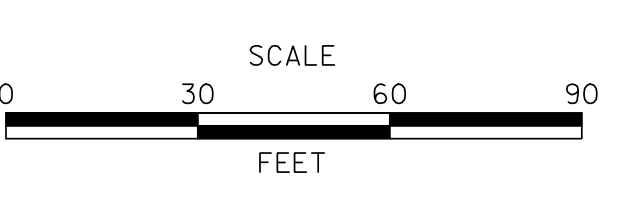
FLARED END SECTION SCHEDULE			
NO.	SIZE / TYPE	SLOPE	SAFETY GRATE
603	18" RCP	0.0361	YES
604	24" RCP	0.0059	NO
605	18" RCP	0.0379	NO
606	18" RCP	0.0457	NO
607	18" RCP	0.0457	NO



17/17/2015 9:53:00 AM C:\CADD\CP0101030_1.Dwg
 17/17/2015 9:53:00 AM



ADDENDUMS / REVISIONS	



US 13 & PORT PENN RD INTERSECTION

CONTRACT T201011302	BRIDGE NO.
COUNTY NEW CASTLE	DESIGNED BY: A.M.S.
	CHECKED BY: B.R.T.

CONSTRUCTION PLAN	
SHEET NO. 33	TOTAL SHTS. 179

CP-10

GUARDRAIL SCHEDULE				
NO.	ITEM DESCRIPTION / TYPE	BEGIN STA.	OFFSET	LENGTH
033	GALVANIZED STEEL BEAM GUARDRAIL, TYPE 1-31	312+25.00	-8.00	375.07
034	GUARDRAIL END TREATMENT ATTENUATOR, TYPE 2-31	312+67.88	27.24	50.00
035	GALVANIZED STEEL BEAM GUARDRAIL, TYPE 1-31	313+18.75	24.00	281.25
036	GUARDRAIL TO BARRIER CONN., EXIT TYPE	316+00.00	24.00	11.50

JUNCTION BOX SCHEDULE				
NO.	STATION	OFFSET	BOX SIZE	INV. EL.
500	141+86.45	-69.50'	48" x 30"	19.92

DRAINAGE INLET SCHEDULE						
NO.	STATION	OFFSET	BOX SIZE	GRATE	T.G. EL.	INV. EL.
478	316+00.00	24.00	34" x 18"	2	47.44	36.92
*SW-5	141+79.26	-86.61	66" x 48"	N/A	25.00	20.00

FLARED END SECTION SCHEDULE			
NO.	SIZE / TYPE	SLOPE	SAFETY GRATE
581	18" RCP	0.0704	NO
404	18" RCP	0.0100	NO

* REFER TO SW SHEETS FOR STORMWATER MANAGEMENT OUTLET STRUCTURE, SW-5 DETAILS.

DRAINAGE PIPE SCHEDULE						
NO.	SIZE / TYPE	CLASS	LENGTH	SLOPE (FT/FT)	INT. EL.	DIS. EL.
581	18" RCP	IV	59'	0.0704	26.75	22.61
584	18" RCP	IV	20'	0.1000	36.92	35.00
613	36" RCP	IV	15'	0.0050	20.00	19.93
585	18" RCP	IV	19'	0.0100	29.21	29.03
446	18" RCP	IV	60'	0.0468	44.91	42.10

MANHOLE SCHEDULE					
NO.	STATION	OFFSET	BOX SIZE	T.S. EL.	INV. EL.
546	312+64.36	-4.00'	48" x 48"	38.00	26.75
420	315+97.36	-45.22'	48" x 48"	38.64	29.21

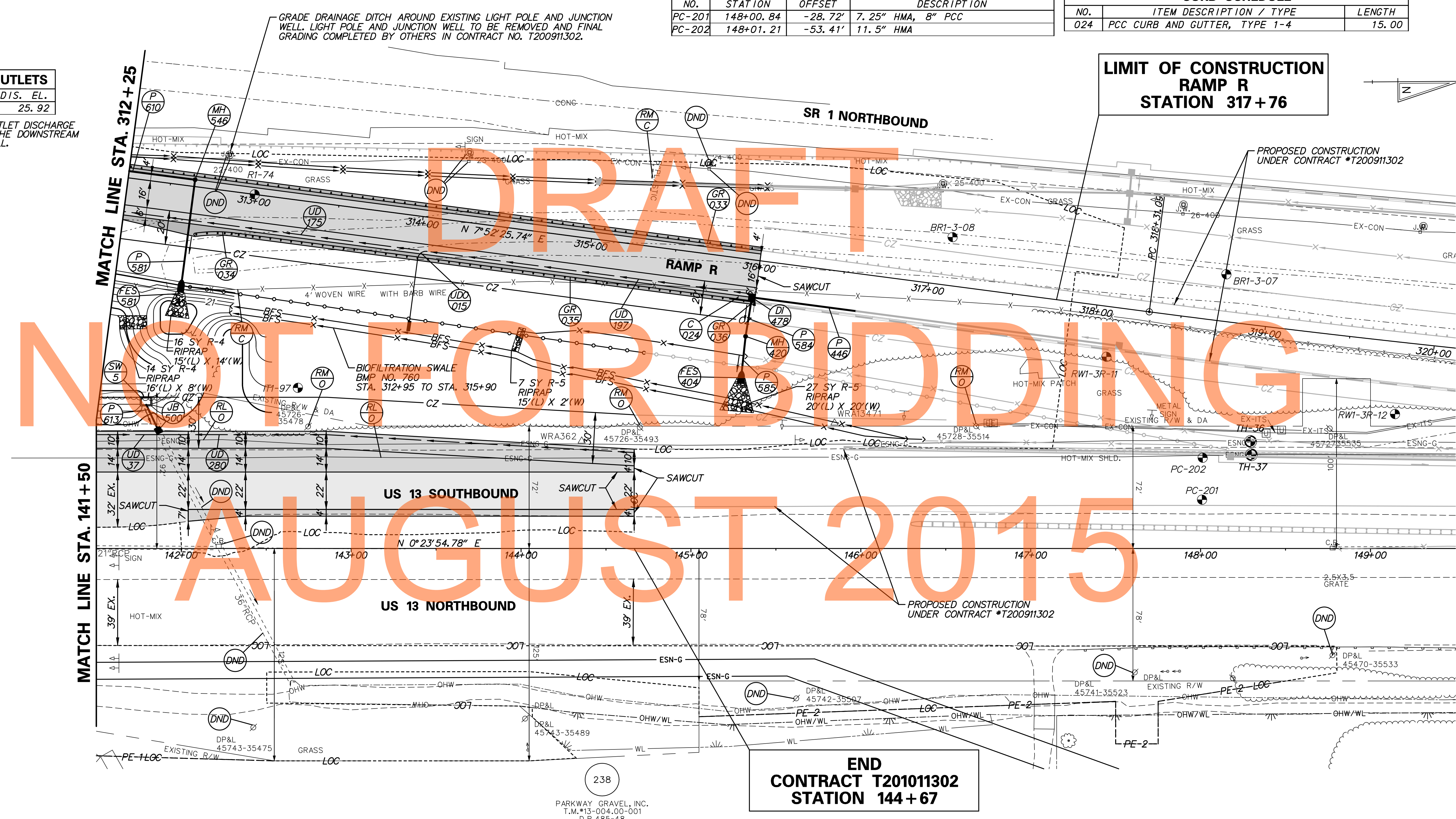
UTILITY TEST HOLE SCHEDULE						
NO.	UTILITY	STATION	OFFSET	GRND EL.	COVER	O.D. & MATERIAL
36	ESNG-G	148+29.43	-63.0'	23.71	3.14	10" COATED METAL PIPE
37	ESNG-G	148+29.90	-55.2'	23.93	2.78	16" WRAPPED METAL PIPE

ROADWAY CORE SCHEDULE			
NO.	STATION	OFFSET	DESCRIPTION
PC-201	148+00.84	-28.72'	7.25" HMA, 8" PCC
PC-202	148+01.21	-53.41'	11.5" HMA

CURB SCHEDULE		
NO.	ITEM DESCRIPTION / TYPE	LENGTH
024	PCC CURB AND GUTTER, TYPE 1-4	15.00

UNDERDRAIN OUTLETS		
NO.	LENGTH	DIS. EL.
015	43.82'	25.92

NOTE: UNDERDRAIN OUTLET DISCHARGE ELEVATION GIVEN AT THE DOWNSTREAM SIDE OF THE HEADWALL.



END CONTRACT T201011302 STATION 144+67

PARKWAY GRAVEL, INC.
T.M.#13-004.00-001
D.R.485-48

DRAINAGE PIPE SCHEDULE						
NO.	SIZE / TYPE	CLASS	LENGTH	SLOPE	INV. EL.	DIS. EL.
598	4' X2' BOX RCP	*	81'	0.0068	31.00	30.45
600	4' X2' BOX RCP	*	81'	0.0068	31.00	30.45
601	4' X2' BOX RCP	*	81'	0.0068	31.00	30.45
603	18" RCP	IV	80'	0.0150	35.00	33.80
604	18" RCP	IV	73'	0.0156	33.83	32.70
614	36" RCP	IV	71'	0.0126	36.23	35.34

ROADWAY CORE SCHEDULE				
NO.	STATION	OFFSET	DESCRIPTION	
PC-224	4001+79.61	-24.91'	9" HMA	

FLARED END SECTION SCHEDULE					
NO.	STATION	OFFSET	SIZE / TYPE	SLOPE	SAFETY GRATE
589	4003+10.38	-60.26	18" RCP	0.0156	NO
590	4003+24.15	34.87	15" RCP	0.0338	NO
593	4003+96.67	-56.05	18" RCP	0.0156	NO
594	4004+03.74	20.19	15" RCP	0.0150	NO
595	4004+09.32	130.55	27" RCP	0.0126	NO
596	4003+40.83	120.61	27" RCP	0.0126	NO

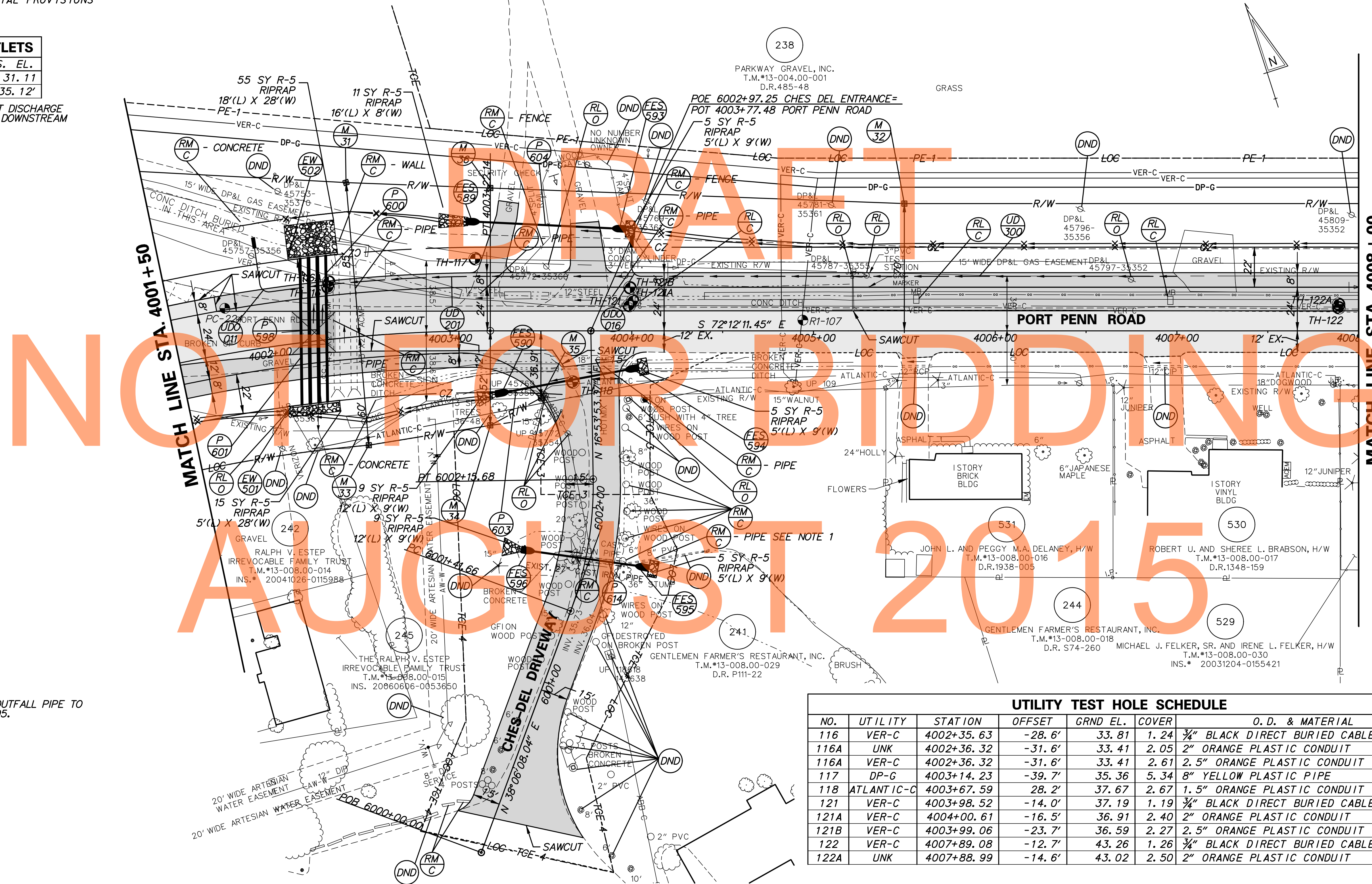
ENDWALL SCHEDULE		
NO.	SIZE / TYPE	INVERT
501	4' X2' BOX RCP	31.00
502	4' X2' BOX RCP	30.45

* SEE CONTRACT SPECIAL PROVISIONS

UNDERDRAIN OUTLETS

NO.	LENGTH	DIS. EL.
011	25.91'	31.11
016	17.00'	35.12'

NOTE: UNDERDRAIN OUTLET DISCHARGE ELEVATION GIVEN AT THE DOWNSTREAM SIDE OF THE HEADWALL.

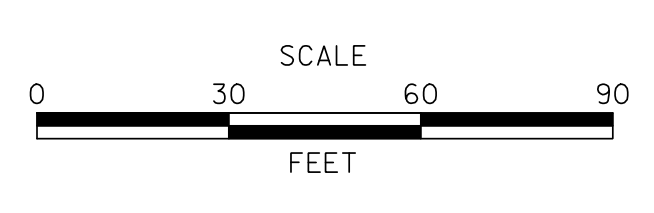


- NOTES:**
- TRIM 8" PVC TO OUTFALL PIPE TO RIPRAP AT FES-595.

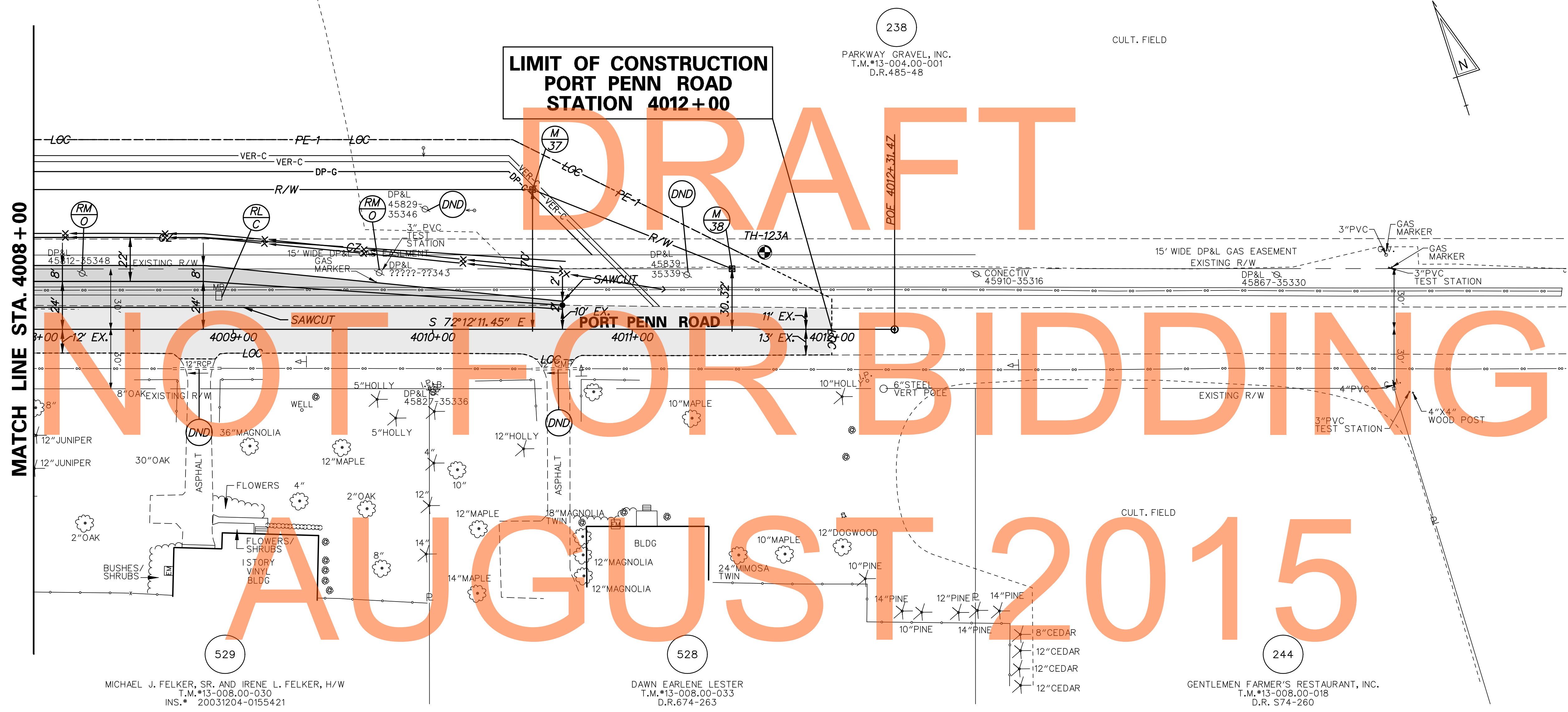
UTILITY TEST HOLE SCHEDULE							
NO.	UTILITY	STATION	OFFSET	GRND EL.	COVER	O. D. & MATERIAL	
116	VER-C	4002+35.63	-28.6'	33.81	1.24	3/4" BLACK DIRECT BURIED CABLE	
116A	UNK	4002+36.32	-31.6'	33.41	2.05	2" ORANGE PLASTIC CONDUIT	
116A	VER-C	4002+36.32	-31.6'	33.41	2.61	2.5" ORANGE PLASTIC CONDUIT	
117	DP-G	4003+14.23	-39.7'	35.36	5.34	8" YELLOW PLASTIC PIPE	
118	ATLANTIC-C	4003+67.59	28.2'	37.67	2.67	1.5" ORANGE PLASTIC CONDUIT	
121	VER-C	4003+98.52	-14.0'	37.19	1.19	3/4" BLACK DIRECT BURIED CABLE	
121A	VER-C	4004+00.61	-16.5'	36.91	2.40	2" ORANGE PLASTIC CONDUIT	
121B	VER-C	4003+99.06	-23.7'	36.59	2.27	2.5" ORANGE PLASTIC CONDUIT	
122	VER-C	4007+89.08	-12.7'	43.26	1.26	3/4" BLACK DIRECT BURIED CABLE	
122A	UNK	4007+88.99	-14.6'	43.02	2.50	2" ORANGE PLASTIC CONDUIT	

N:\1653-000\Contract\10\CADD\CP012U30_L_ID.dgn
 17/17/2015 9:50:24 AM

ADDENDUMS / REVISIONS



CONTRACT	T201011302	BRIDGE NO.	
COUNTY	NEW CASTLE	DESIGNED BY:	A.M.S.
		CHECKED BY:	B.R.T.



MATCH LINE STA. 4008 + 00

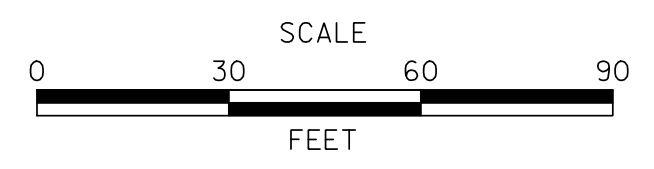
**LIMIT OF CONSTRUCTION
PORT PENN ROAD
STATION 4012 + 00**

UTILITY TEST HOLE SCHEDULE						
NO.	UTILITY	STATION	OFFSET	GRND EL.	COVER	O. D. & MATERIAL
123A	DP-G	4011+66.36	-38.6'	50.05	6.31	8" YELLOW PLASTIC PIPE

N:\16531-000\Contract ID\CADD\CPO130301_ID.dgn
 9/17/2015 9:48:45 AM



ADDENDUMS / REVISIONS	



**US 13 & PORT PENN RD
INTERSECTION**

CONTRACT T201011302	BRIDGE NO.
COUNTY NEW CASTLE	DESIGNED BY: A.M.S. CHECKED BY: B.R.T.

CONSTRUCTION PLAN

CP-13
SHEET NO. 36
TOTAL SHTS. 179